



DIAMOND TESTING
P.O. Box 157
HOISINGTON, KANSAS 67544
(620) 653-7550 • (800) 542-7313
STC 30036.D 522

C **KGS LIBRARY**

Company R. J. M. Oil Company, Inc. Lease & Well No. Billy Ray No. 3
Elevation 1824 KB Formation Lansing/Kansas City "B" - "D" Effective Pay -- Ft. Ticket No. J2319
Date 12-19-08 Sec. 7 Twp. 18S Range 11W County Barton State Kansas
Test Approved By Scott Alberg Diamond Representative John C. Riedl

Formation Test No. 1 Interval Tested from 3,079 ft. to 3,144 ft. Total Depth 3,144 ft.

Packer Depth 3,074 ft. Size 6 3/4 in. Packer Depth -- ft. Size -- in.

Packer Depth 3,079 ft. Size 6 3/4 in. Packer Depth -- ft. Size -- in.

Depth of Selective Zone Set ft.

Top Recorder Depth (Inside) 3,082 ft. Recorder Number 30036 Cap. 5,000 psi

Bottom Recorder Depth (Outside) 3,141 ft. Recorder Number 11017 Cap. 4,000 psi

Below Straddle Recorder Depth ft. Recorder Number Cap. psi

Drilling Contractor Royal Drilling, Inc. - Rig 1 Drill Collar Length -- ft. I.D. -- in.

Mud Type Chemical Viscosity 48 Weight Pipe Length -- ft. I.D. -- in.

Weight 9.0 Water Loss 8.8 cc. Drill Pipe Length 3,059 ft. I.D. 3 1/2 in.

Chlorides 3,000 P.P.M. Test Tool Length 20 ft. Tool Size 3 1/2 - IF in.

Jars: Make Sterling Serial Number Not Run Anchor Length 65 ft. Size 4 1/2 - FH in.

Did Well Flow? No Reversed Out No Surface Choke Size 1 in. Bottom Choke Size 5/8 in.

Main Hole Size 7 7/8 in. Tool Joint Size 4 1/2 - XH in.

Blow: 1st Open: Strong blow. Off bottom of bucket in 13 mins. No blow back during shut-in.

2nd Open: Strong blow. Off bottom of bucket in 1 mins. No blow back during shut-in.

Recovered 900 ft. of gas in pipe

Recovered 40 ft. of slightly oil cut gassy mud = .569200 bbls. (Grind out: 5%-oil; 25%-gas; 70%-mud)

Recovered 40 ft. of TOTAL FLUID = .569200 bbls.

Recovered ft. of

Recovered ft. of

Remarks

Time Set Packer(s) 12:25 A.M. ~~P.M.~~ Time Started Off Bottom 3:10 A.M. ~~P.M.~~ Maximum Temperature 98°

Initial Hydrostatic Pressure (A) 1465 P.S.I.

Initial Flow Period Minutes 30 (B) 14 P.S.I. to (C) 19 P.S.I.

Initial Closed In Period Minutes 30 (D) 278 P.S.I.

Final Flow Period Minutes 45 (E) 25 P.S.I. to (F) 26 P.S.I.

Final Closed In Period Minutes 60 (G) 849 P.S.I.

Final Hydrostatic Pressure (H) 1435 P.S.I.

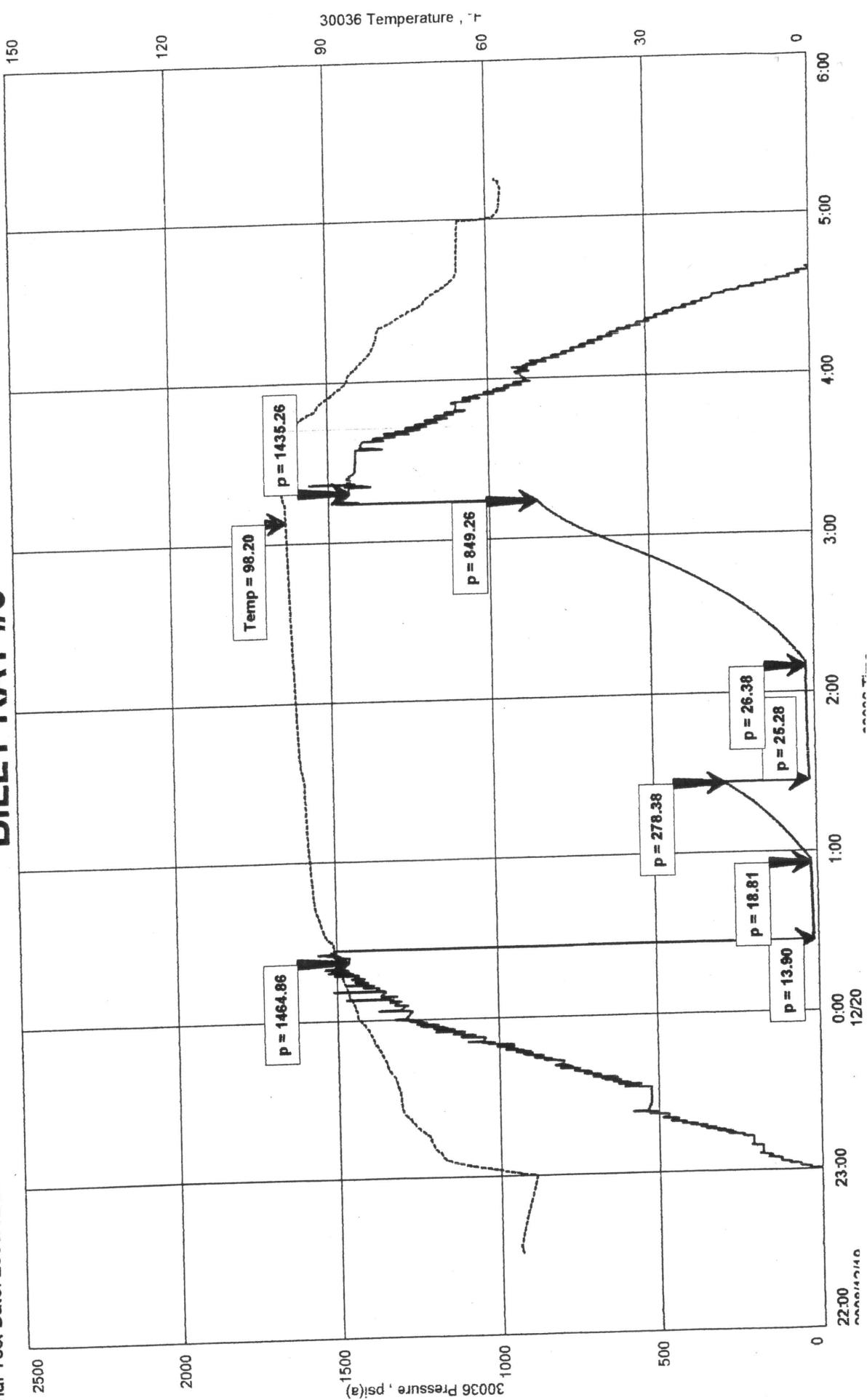
API = 15-009-25299

7-185-11W

BILLI RAY #3
Formation: LKC
Job Number: D522

RJM OIL CO
DST #3 3079 TO 3144
Start Test Date: 2008/12/19
Final Test Date: 2008/12/20

BILLY RAY #3





DIAMOND TESTING

P.O. Box 157
HOISINGTON, KANSAS 67544
(620) 653-7550 • (800) 542-7313
STC 30036.D523

Company R. J. M. Oil Company, Inc. Lease & Well No. Billy Ray No. 3
Elevation 1824 KB Formation Arbuckle Effective Pay -- Ft. Ticket No. J2320
Date 12-21-08 Sec. 7 Twp. 18S Range 11W County Barton State Kansas
Test Approved By Scott Alberg Diamond Representative John C. Riedl

Formation Test No. 2 Interval Tested from 3,303 ft. to 3,363 ft. Total Depth 3,363 ft.
Packer Depth 3,298 ft. Size 6 3/4 in. Packer Depth -- ft. Size -- in.
Packer Depth 3,303 ft. Size 6 3/4 in. Packer Depth -- ft. Size -- in.
Depth of Selective Zone Set ft.

Top Recorder Depth (Inside) 3,306 ft. Recorder Number 30036 Cap. 5,000 psi
Bottom Recorder Depth (Outside) 3,360 ft. Recorder Number 11017 Cap. 4,000 psi
Below Straddle Recorder Depth ft. Recorder Number Cap. psi

Drilling Contractor Royal Drilling, Inc. - Rig 1 Drill Collar Length -- ft. I.D. -- in.
Mud Type Chemical Viscosity 47 Weight Pipe Length -- ft. I.D. -- in.
Weight 9.3 Water Loss 10.4 cc. Drill Pipe Length 3,283 ft. I.D. 3 1/2 in.
Chlorides 7,000 P.P.M. Test Tool Length 20 ft. Tool Size 3 1/2 - JF in.
Jars: Make Sterling Serial Number Not Run Anchor Length 60 ft. Size 4 1/2 - FH in.
Did Well Flow? No Reversed Out No Surface Choke Size 1 in. Bottom Choke Size 5/8 in.
Main Hole Size 7 7/8 in. Tool Joint Size 4 1/2 - XH in.

Blow: 1st Open: Good blow, slowly building to 6 3/4 ins. at end. No blow back during shut-in.
2nd Open: Weak, 2 in., blow. No blow back during shut-in.

Recovered 40 ft. of gas in pipe
Recovered 40 ft. of clean gassy oil = .569200 bbls. (Grind out: 15%-gas; 85%-oil)
Recovered 35 ft. of mud cut gassy oil = .498050 bbls. (Grind out: 30%-mud; 15%-gas; 55%-oil)
Recovered 75 ft. of TOTAL FLUID = 1.067250 bbls.
Recovered ft. of

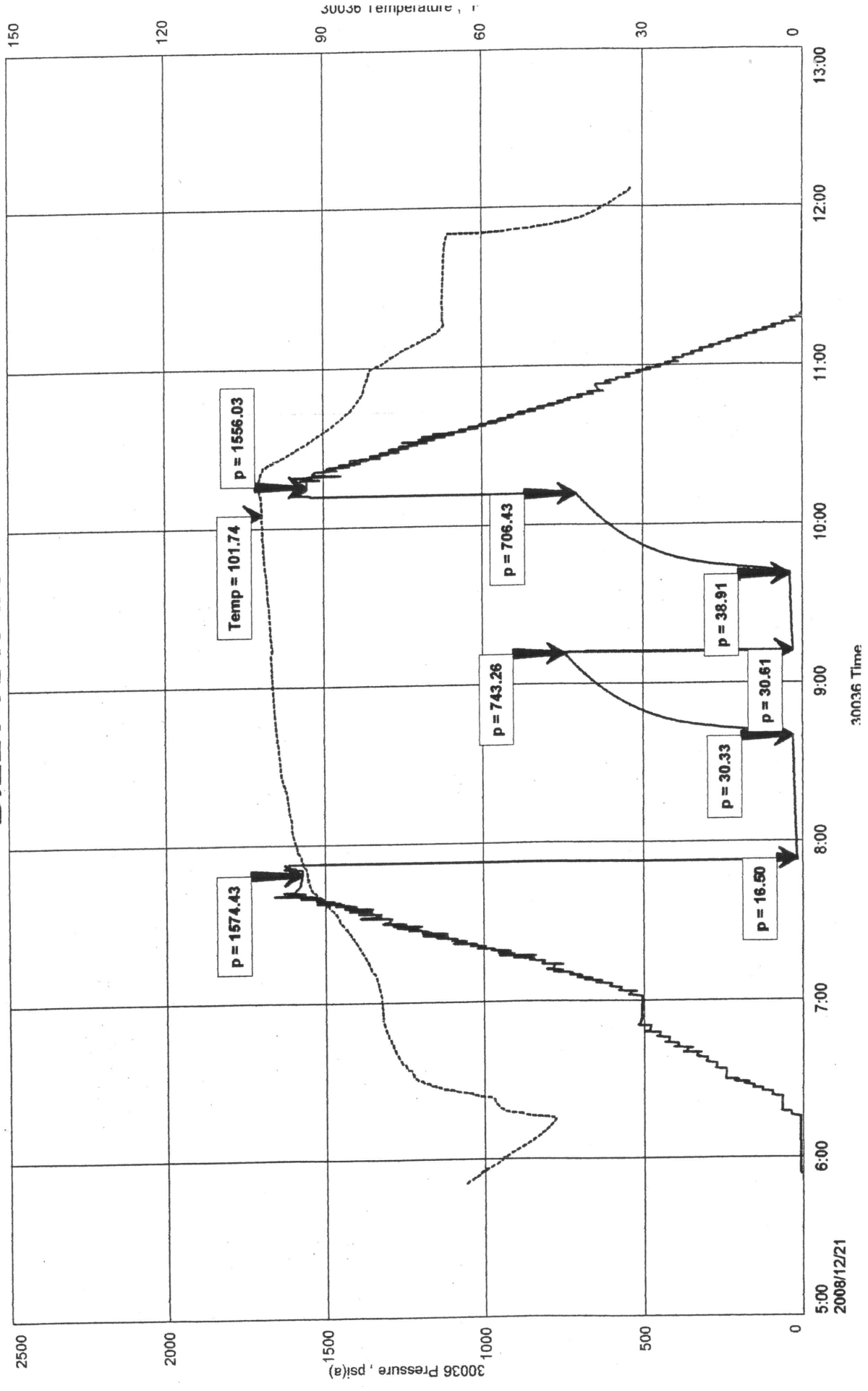
Remarks

Time Set Packer(s) 8:00 ~~P.M.~~ ^{A.M.} Time Started Off Bottom 10:15 ~~P.M.~~ ^{A.M.} Maximum Temperature 102°
Initial Hydrostatic Pressure (A) 1574 P.S.I.
Initial Flow Period Minutes 45 (B) 17 P.S.I. to (C) 30 P.S.I.
Initial Closed In Period Minutes 30 (D) 743 P.S.I.
Final Flow Period Minutes 30 (E) 31 P.S.I. to (F) 39 P.S.I.
Final Closed In Period Minutes 30 (G) 706 P.S.I.
Final Hydrostatic Pressure (H) 1556 P.S.I.

RJM OIL CO
DST #2 3303 TO 3363
Start Test Date: 2008/12/21
Final Test Date: 2008/12/21

BILLY RAY #3
Formation: ARBUCKLE
Job Number: D523

BILLY RAY #3



GENERAL INFORMATION

Client Information:

Company: RJM OIL CO
Contact: BILL MILLER
Phone: Fax: e-mail:

Site Information:

Contact: CHRIS HOFFMAN
Phone: Fax: e-mail:

Well Information:

Name: BILLY RAY #3
Operator: RJM OIL CO
Location-Downhole: DST #3 3303 TO 3366
Location-Surface: S7/18S/ 11W BARTON COUNTY

Test Information:

| | | | |
|-----------------|-----------------|---------------|---------------|
| Company: | DIAMOND TESTING | | |
| Representative: | JOHN RIEDL | | |
| Supervisor: | CHRIS HOFFMAN | | |
| Test Type: | CONVENTIONAL | Job Number: | D524 |
| Test Unit: | 2 | | |
| Start Date: | 2008/12/21 | Start Time: | 18:45:00 |
| End Date: | 2008/12/22 | End Time: | 01:45:00 |
| Report Date: | 2008/12/22 | Prepared By: | JOHN RIEDL |
| <u>Remarks:</u> | | Qualified By: | CHRIS HOFFMAN |

RECOVERY: 150' GAS IN PIPE
 100' CLEAN GASSY OIL
 120' HEAVY GAS+OIL CUT MUD

BILLY RAY #3
Formation: ARBUCKLE
Job Number: D524

RJM OIL CO
DST #3 3303 TO 3366
Start Test Date: 2008/12/21
Final Test Date: 2008/12/22

BILLY RAY #3

