

Operator Name **Texas Energies, Inc.** Lease Name **Sprawka** Well # **1-12**

Sec. **12** Twp. **18S** Rge. **12** East West County **Barton**

WELL LOG

INSTRUCTIONS: Show important tops and base of formations penetrated. Detail all cores. Report all drill stem tests giving interval tested, time tool open and closed, flowing and shut-in pressures, whether shut-in pressure reached static level, hydrostatic pressures, bottom hole temperature, fluid recovery, and flow rates if gas to surface during test. Attach extra sheet if more space is needed. Attach copy of log.

Drill Stem Tests Taken	<input checked="" type="checkbox"/> Yes	<input type="checkbox"/> No	Formation Description <input checked="" type="checkbox"/> Log <input type="checkbox"/> Sample
Samples Sent to Geological Survey	<input checked="" type="checkbox"/> Yes	<input type="checkbox"/> No	
Cores Taken	<input type="checkbox"/> Yes	<input checked="" type="checkbox"/> No	
DST #1	3013-3040 (Toronto) Time 30-30-30-30. IHP 1603; IFP 73-21; ISIP 597; FFP 63-21; FSIP 283; FHP 1518. Rec. 20' drilling mud.	Heebner Toronto Douglas Br. Lime	Top Bottom 3006 (-1142) 3026 (-1162) 3036 (-1172) 3110 (-1246)
DST #2	3117-3170 (Lansing) Time 30-30-45-60. IHP 1677; IFP 73-84; ISIP 1109; FFP 147- 157; ISIP 1266; FHP 1644. Gas to surface in 20 min. 2nd opening - too small to measure. Rec. 100' oil cut mud, 430' slightly muddy oil.	Lansing B/KC Arbuckle L.T.D.	Top Bottom 3124 (-1260) 3362 (-1498) 3395 (-1531) 3470 (-1606)
DST #3	3166-3202 (Lansing) Time 30-45-45-60. IHP 1677; IFP 105-189; ISIP 1235; FFP 295-336; FSIP 1256; FHP 1624. Gas to surface in 20 minutes 1st opening - too small to measure. Gas to surface 2nd opening - too small to measure. Rec. 72' gas and mud cut oil, 372' slightly mud cut gassy oil, 651' gassy clean oil, 93' oil and mud cut water.		
DST #4	3404-3410 (Arbuckle) Time 30-30-30-30. IHP 1888; IFP 84-52; ISIP 681; FFP 94-63; FSIP 472; FHP 1835. Rec. 30' 70% oil, 30% mud; 60' 5% gas, 35% oil, 60% mud.		

CASING RECORD <input checked="" type="checkbox"/> New <input type="checkbox"/> Used							
Report all strings set-conductor, surface, intermediate, production, etc.							
Purpose of String	Size Hole Drilled	Size Casing Set (in O.D.)	Weight Lbs/Ft.	Setting Depth	Type of Cement	#Sacks Used	Type and Percent Additives
Surface	12 1/4	8 5/8	23	349	60-40 po2	200	2% Ge1 3% CC
Production	7 7/8	4 1/2	10.5	3463	Lite Common	25 100	-- --
PERFORATION RECORD				Acid, Fracture, Shot, Cement Squeeze Record			
Shots Per Foot	Specify Footage of Each Interval Perforated			(Amount and Kind of Material Used)		Depth	
2	3194.5-3198.5			500 gal. 15% NE 2000 gal. 20% retarded NE		3194.5-3198.5 3194.5-3198.5	
TUBING RECORD		Size 2 3/8	Set At 3440	Packer at --	Liner Run	<input type="checkbox"/> Yes <input type="checkbox"/> No	
Date of First Production	Producing Method						
3-3-85	<input type="checkbox"/> Flowing <input checked="" type="checkbox"/> Pumping <input type="checkbox"/> Gas Lift <input type="checkbox"/> Other (explain).....						
Estimated Production Per 24 Hours	Oil	Gas	Water	Gas-Oil Ratio	Gravity		
	47 Bbls	-0- MCF	63 Bbls	CFPB			

METHOD OF COMPLETION

Production Interval

Disposition of gas: Vented Open Hole Perforation
 Sold Other (Specify) 3194.5-3198.5
 Used on Lease Dually Completed
 Commingled

12-18-12W

CONFIDENTIAL

EXHIBIT 'E'

Completion Report

RELEASED

Date: JUN 1 1986

FROM CONFIDENTIAL

AUG 12 1985

**State Geological Survey
WICHITA BRANCH**

12-18-12W

03-14-85 41.67 bbls. oil, 58.45 bbls. water.

03-15-85 41.67 bbls. oil, 80 bbls. water.

03-16-85 41.67 bbls. oil, 80 bbls. water.

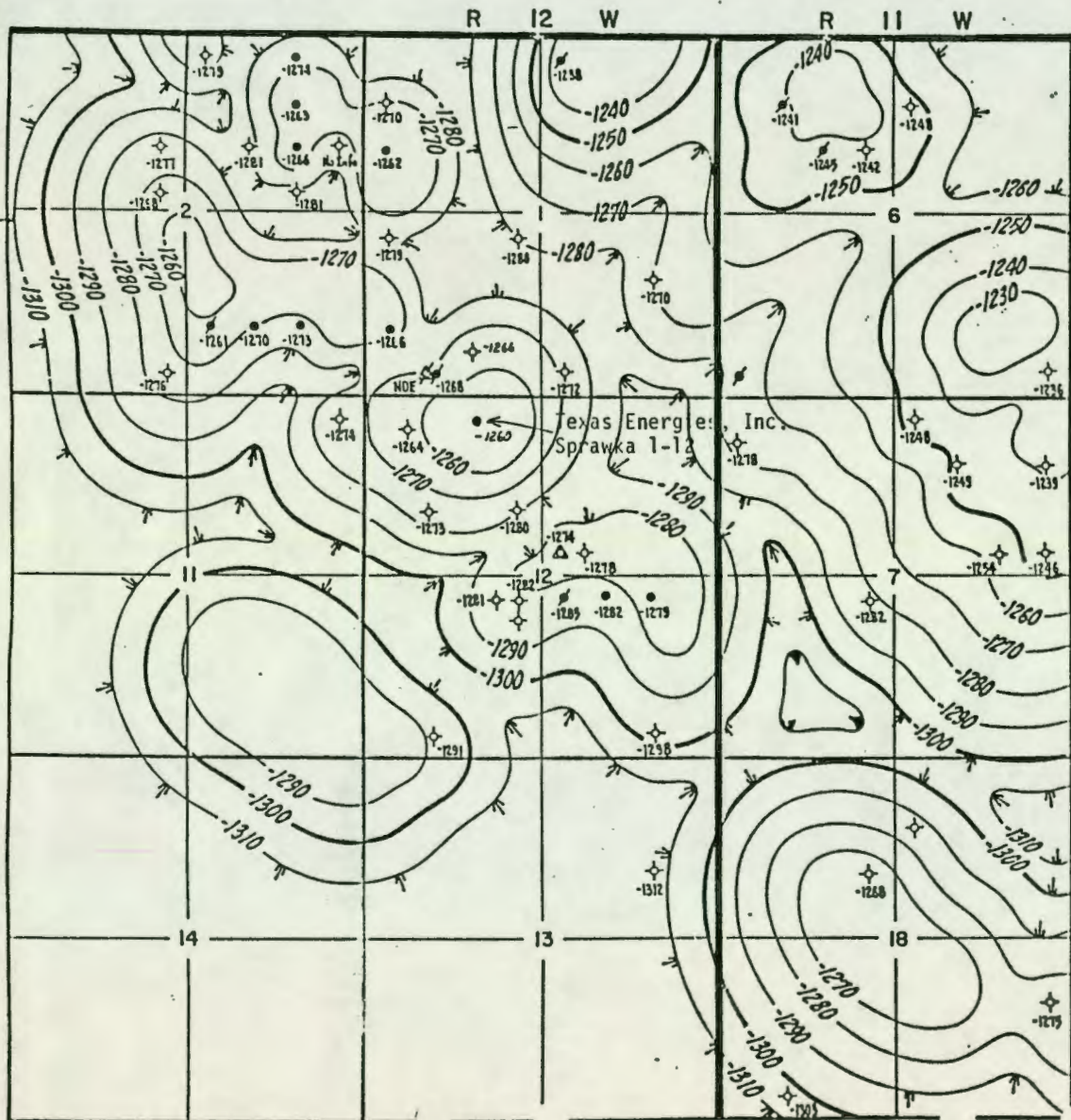
END OF REPORT

CONFIDENTIAL

AUG 12 1985

State Geological Survey

12-18-12W



SCALE 2.5" = 1 MILE

CONFIDENTIAL

EXHIBIT 'F'

Structure Map - Top of the Lansing

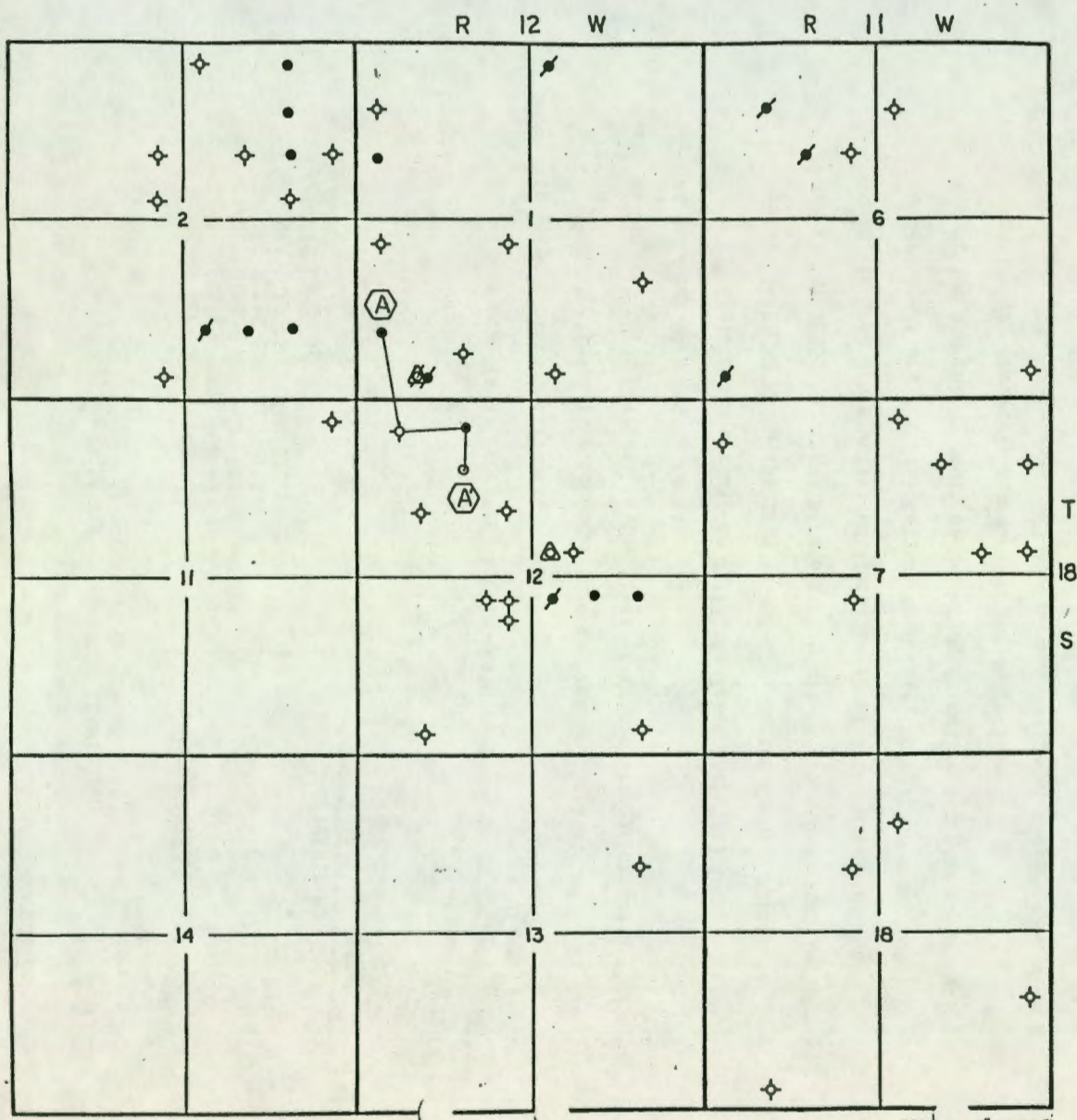
Portion of T18S, R11W and T18S, R12W
Barton County, Kansas

Contour Interval: 10'

Date: May 1985

APR 12 1985
 STATE GEOLOGICAL SURVEY
 WICHITA BRANCH

12-18-12W



CONFIDENTIAL

1961 2 1985

State Geological Survey
WICHITA

EXHIBIT 'G'
Cross-section

SCALE 1/8" = 1 MILE

JUN 10 1985

NEW POOL APPLICATION
NO. NP 48534

CONSERVATION DIVISION
Wichita, Kansas

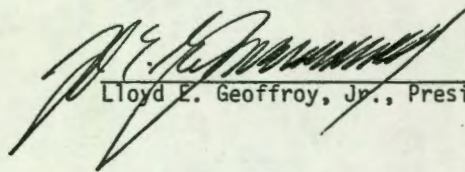
It is the opinion of the operator that this well will not cause or impair correlative rights if it is granted a new pool determination.

Wherefore, applicant prays that this matter be heard and notice thereof given as required by law, and that following such hearing a new pool determination be granted.

CONFIDENTIAL

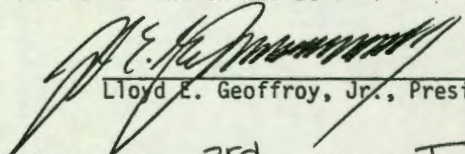
Respectfully submitted,

TEXAS ENERGIES, INC.
P.O. Box 947
Pratt, KS 67124


Lloyd E. Geoffroy, Jr., President

STATE OF KANSAS }
COUNTY OF PRATT } ss

Lloyd E. Geoffroy, Jr., of lawful age, first being duly sworn, states that he is President of Texas Energies, Inc.; that he has read the above and foregoing application and the same are true, that he is authorized to execute this affidavit for and on its behalf.


Lloyd E. Geoffroy, Jr., President

Subscribed and sworn to before me this 3rd day of June, 1985

MARCIA BAUGHMAN
NOTARY PUBLIC
STATE OF KANSAS
MY APPT. EXPIRES 4-30-86

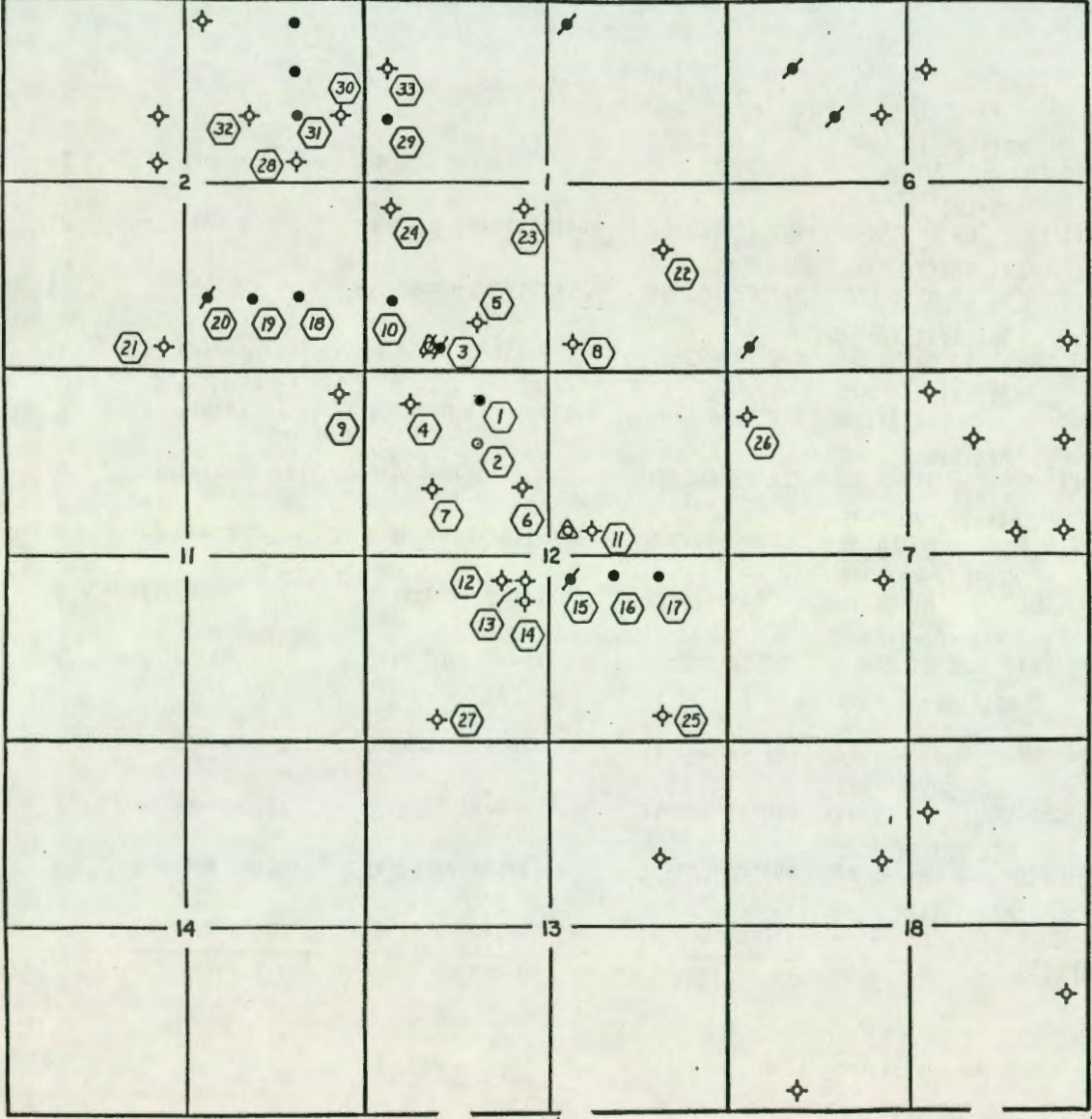
Marcia Baughman
Notary Public

My Commission Expires: April 30, 1986

AUG - 2 1985
State Geological Survey
WICHITA BRANCH

12-18-12W

R 12 W R 11 W



SCALE .5" = 1 MILE

CONFIDENTIAL

RECEIVED
STATE CORPORATION COMMISSION

JUN 10 1985

CONSERVATION DIVISION
Wichita, Kansas

State Geological Survey
WICHITA BRANCH
AUG 1 1985

EXHIBIT 'A'

Plat Map
Portion of T18S, R11W and T18S, R12W
Stafford County, Kansas

May 1985

12-18-81-2W

CONFIDENTIAL

RECEIVED
STATE CORPORATION COMMISSION

Well Identification Sheet
Page 2

JUN 1 0 1985

CONSERVATION DIVISION
Wichita, Kansas

IDENT. #	WELL NAME & NO.	OPERATOR	API #	LOCATION	SPUD DATE	COMP. DATE	T.D.	PRODUCING FORMATION	TOP AND BOTTOM DEPTH OF PRODUCING FORMATION
14	#1 Hammeke	G. Vance	Not Issued	C E/2 NE SW Sec. 12-18S-12W	09-13-41	09-27-41	3458	D&A	---
15	#1 Tritsch	Woodman-Iannitti	Not Listed	NW NW SE Sec. 12-18S-12W	06-14-66	08-18-66	3415	Arbuckle	3399 - 3415
16	#1 Tritsch	Brougher Oil	15-009-21,732	100' W of NE NW SE Sec. 12-18S-12W	10-16-79	06-05-80	3416	Lansing	3288-3293
17	#1-12 Peterman	Graham-Michaelis	15-009-21,814	NW NE SE Sec. 12-18S-12W	04-18-80	10-30-80	3435	Lansing	3254 - 3289
18	#3 Kinsel	Pyramid Oil	15-009-20,500	NW SE SE Sec. 2-18S-12W	Not Listed	11-12-70	3438	Lansing	3222 - 3225
19	#2 Kinsel	Pyramid Oil	15-009-20,431	NE SW SE Sec. 2-18S-12W	10-22-69	01-02-70	3385	Arbuckle	3375 - 3385
20	#4 Kinsel	Pyramid Oil	15-009-20,527	NW SW SE Sec. 2-18S-12W	08-24-70	11-12-70	3353	Arbuckle	3344.5 - 3353
21	#1 Kinsel	Shell Oil Company	Not Issued	SE SE SW Sec. 2-18S-12W	05-30-41	07-16-41	3364	D&A	---
22	#1 Tritsch	Alma Inc.	15-009-22,956	SW NE SE Sec. 1-18S-12W	11-27-82	12-23-82	3443	D&A	---
23	#1 Drews	Crown Oil Company	Not Issued	NE NE SW Sec. 1-18S-12W	Not Listed	06-30-50	3505	D&A	---
24	#1 Werner	Nadel & Gussman	Not Issued	NW NW SW Sec. 1-18S-12W	08-14-59	08-28-59	3445	D&A	---
25	#1 Stueder	Dunne-Gardner	Not Issued	SW SE SE Sec. 12-18S-12W	03-21-62	04-06-62	3452	D&A	---
26	#1 Jenke	C. L. Carlock	Not Issued	C W/2 NW NW Sec. 7-18S-11W	05-16-40	05-31-40	3460	D&A	---

State Geological Survey
WICHITA BRANCH
AUG 12 1985

12-18-12W

EXHIBIT 'B'

Drilling Report
ACO-1

CONFIDENTIAL

AUG 12 1985
State Geological Survey
WICHITA BRANCH

RECEIVED
STATE CORPORATION COMMISSION
JUN 10 1985
CONSERVATION DIVISION
WICHITA, KANSAS

12-18-12W

02-02-85 DST #4 Test interval 3404-3410' (Arbuckle)
Time 30-30-30-30. IHP 1888; IFP 84-52; ISIP
681; FFP 94-63; FSIP 472; FHP 1835. Rec. 30'
70% oil, 30% mud; 60' 5% gas, 35% oil, 60% mud.
BHT 112° F.

R.T.D. 3475', L.T.D. 3470'.

Ran 84 jts. 4 1/2" 10.5# new casing with 25 sxs
Lite and 100 sxs Common set at 3463', T.D. 3470'.
Ruff coat footage 178.38' (6 jts.) at interval
3072.45-3250.82'. Job complete at 11:00 a.m.

Rigging down. Completion reports will be sent
out when completion unit is moved on location.

LOG TOPS

Heebner	3006	(-1142)
Toronto	3026	(-1162)
Douglas	3036	(-1172)
Br. Lime	3110	(-1246)
Lansing	3124	(-1260)
B/KC	3362	(-1498)
Arbuckle	3395	(-1531)
L.T.D.	3470	(-1606)

CONFIDENTIAL

AUG 1 2 1985

State Geological Survey
WICHITA BRANCH

RECEIVED
STATE CORPORATION COMMISSION

JUN 10 1985

CONSERVATION DIVISION
Wichita, Kansas

CHENEY TESTING COMPANY, INC.

P. O. Box 367 HILL CITY, KANSAS 67642

12-18-12W

DRILL-STEM TEST DATA

Company <u>Texas Energies Inc.</u>	Test No. <u>3</u> CONFIDENTIAL
Well Name & Number <u>Sprawka #1-12</u>	Zone Tested <u>Lansing</u>
Company Address <u>Box 947 Pratt Ks.</u>	Date <u>1/31/85</u>
Company Rep. <u>Richard Harper</u> <u>NW NE W4</u>	Tester <u>Walt Brown</u>
Contractor <u>Wheatstate Oil Field Service</u>	Elevation <u>1864 KB</u>
Location: Sec.12 Twp. 18s Rge. 12w Co. Barton State Ks.	Est. Feet of Pay

Recorder No. <u>13768</u> Type <u>AK-1</u> Range <u>4175</u> PSI	Recorder No. <u>13637</u> Type <u>AK-1</u> Range <u>6075</u> PSI
Recorder Depth <u>3192</u> Clock # <u>25560</u>	Recorder Depth <u>3197</u> Clock # <u>25720</u>
(A) Initial Hydrostatic Mud <u>1677</u> PSI	Tool Open Before I.S.I. <u>30</u> Mins.
(B) First Initial Flow Pressure <u>105</u> PSI	Initial Shut-in <u>45</u> Mins.
(C) First Final Flow Pressure <u>189</u> PSI	Flow Period <u>45</u> Mins.
(D) Initial Shut-in Pressure <u>1235</u> PSI	Final Shut-in <u>60</u> Mins.
(E) Second Initial Flow Pressure <u>294</u> PSI	Top Choke Size <u>1"</u> Hole Size <u>7 7/8"</u>
(F) Second Final Flow Pressure <u>336</u> PSI	Bottom Choke Size <u>3/4"</u> Rubber Size <u>6 3/4"</u>
(G) Final Shut-in Pressure <u>1256</u> PSI	Tool Open @ <u>5:10 AM</u>
(H) Final Hydrostatic Mud <u>1624</u> PSI	Blow Remarks <u>1st open: Strong blow, off</u>
Temperature <u>112</u>	<u>bottom of bucket, gas to surface in</u>
Mud Weight <u>9.7</u> Viscosity <u>37</u>	<u>25 minutes.</u>
Fluid Loss <u>9.5</u>	<u>2nd open: Gas to small measure.</u>
Interval Tested <u>3166-3202</u>	<u>STATE CORPORATION COMMISSION</u>
Anchor Length <u>36</u>	<u>JUN 10 1985</u>
Top Packer Depth <u>3161</u>	<u>CONSERVATION DIVISION</u>
Bottom Packer Depth <u>3166</u>	<u>Wichita, Kansas</u>
Total Depth <u>3206</u>	
Drill Pipe Size <u>4 1/2 xH</u>	<u>Drill Collars I.D. 2.25 Ft. run 181.</u>
Wt. Pipe I. D. _____ Ft. Run _____	
Recovery-Total Feet <u>1188</u>	
Recovered <u>72</u> Feet Of <u>35% gas, 35% oil, 5% water & 25% mud.</u>	
Recovered <u>62</u> Feet Of <u>25% gas, 63% oil, 8% water & 4% mud.</u>	
Recovered <u>310</u> Feet Of <u>20% gas, 70% oil, 9% water & 1% mud.</u>	
Recovered <u>651</u> Feet Of <u>2% gas & 98% oil</u>	
Recovered <u>93</u> Feet Of <u>Oil & mud cut water.</u>	
Recovered _____ Feet Of _____	
Extra Equipment <u>Safety JOint, Down Hole INsurance.</u>	Price of Job <u>\$725.00</u>

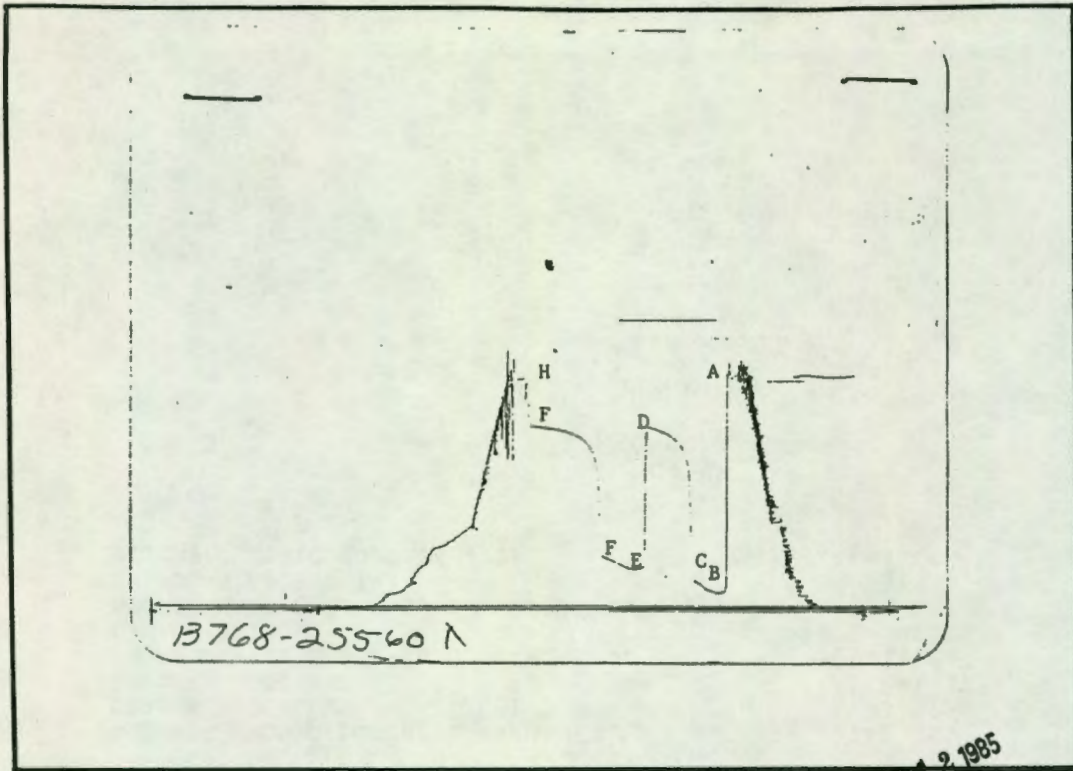
MILLER PRINTERS, INC.
Great Bend, Kansas

AUG 12 1985

State Geological Survey
WICHITA BRANCH

1

12-18-12W



This is an actual photograph of recorder chart.

AD 1-2 1985

CONFIDENTIAL

PRESSURE

POINT

Field Reading

Office Reading

State Geological Survey
WICHITA BRANCH

(A)	Initial Hydrostatic Mud	1677	1672	PSI
(B)	First Initial Flow Pressure	105	93.1	PSI
(C)	First Final Flow Pressure	189	175.8	PSI
(D)	Initial Closed-in Pressure	1235	1236.6	PSI
(E)	Second Initial Flow Pressure	294	280.4	PSI
(F)	Second Final Flow Pressure	336	345.3	PSI
(G)	Final Closed-in Pressure	1256	1245.0	PSI
(H)	Final Hydrostatic Mud	1624	1619	PSI

RECEIVED
STATE CORPORATION COMMISSION

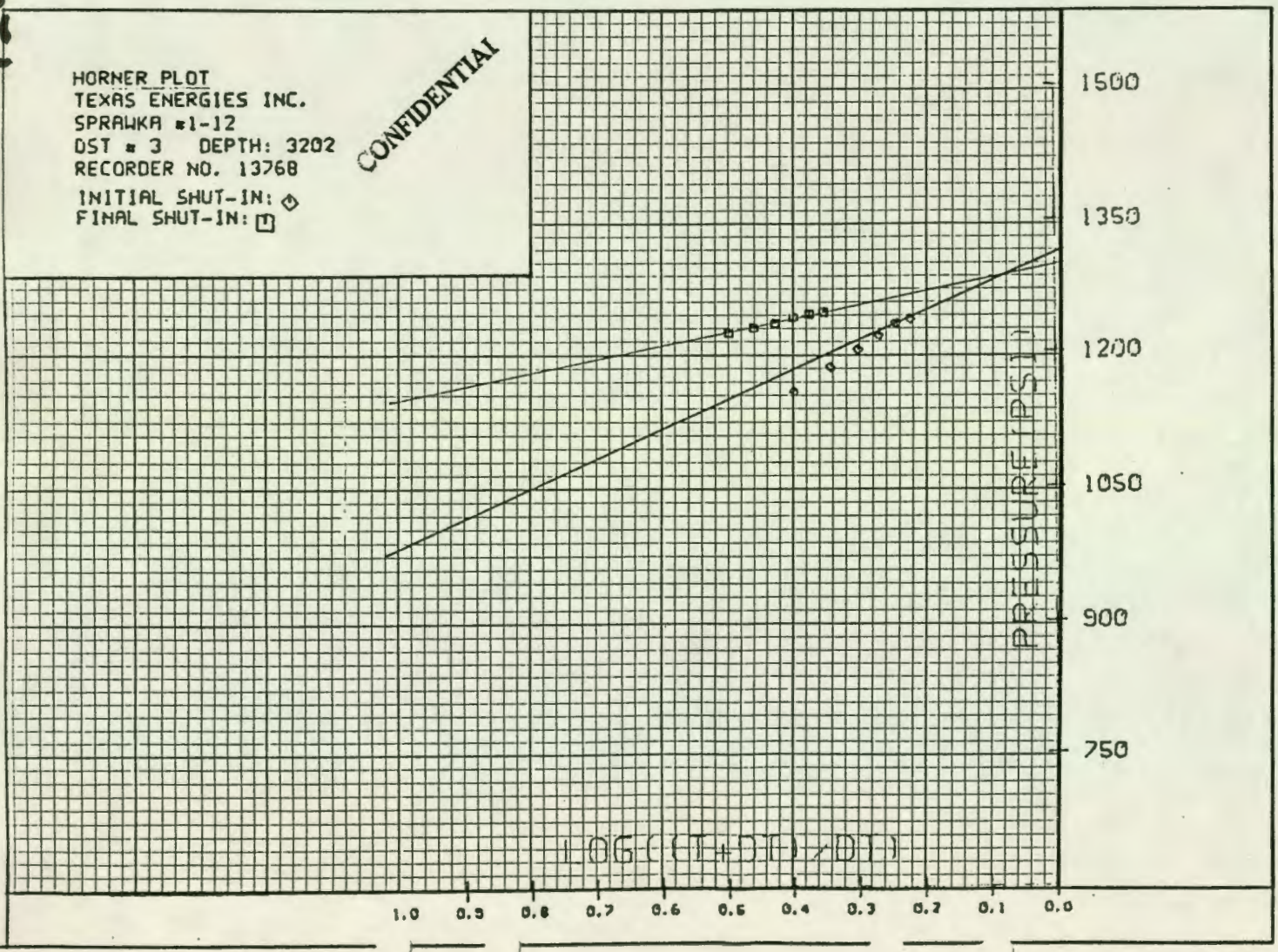
JUN 10 1985

CONSERVATION DIVISION
Wichita, Kansas

me-18-121

HORNER PLOT
TEXAS ENERGIES INC.
SPRAWKA #1-12
DST # 3 DEPTH: 3202
RECORDER NO. 13768
INITIAL SHUT-IN: \diamond
FINAL SHUT-IN: \square

CONFIDENTIAL



AUG 12 1985
State Geological Survey
WICHITA BRANCH

RECEIVED
STATE CORPORATION COMMISSION

JUN 10 1985

CONSERVATION DIVISION
Wichita, Kansas