

WICHITA BRANCH

**KANSAS DRILLERS LOG**

API No. 15 — 009 — 21,653  
 County Number

S. 2 T. 18 R. 13 W  
 Loc. SW NE NW  
 County Barton

Operator  
 ICER ADDIS

Address  
 Drawer 8038, Wichita, Kansas 67208

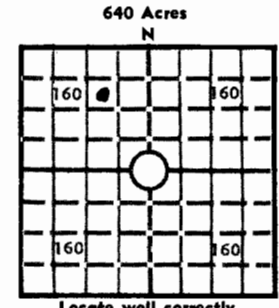
Well No. 4 Lease Name TINDALL

Footage Location  
 feet from (N) (S) line feet from (E) (W) line

Principal Contractor Geologist  
 DUKE DRILLING CO., INC. Richard M. Foley

Spud Date Total Depth P.B.T.D.  
 July 30, 1979 3,335'

Date Completed Oil Purchaser  
 August 5, 1979 Koch Oil Company



Elev.: Gr. 1,804'  
 DF KB 1,809'

**CASING RECORD**

Report of all strings set — surface, intermediate, production, etc.

Purpose of string	Size hole drilled	Size casing set (in O.D.)	Weight lbs/ft.	Setting depth	Type cement	Sacks	Type and percent additives
Surface	12-1/4"	8-5/8"	28#	420'	50-50 Pozmix	275	2% Gel, 3% CaCh
Production		5-1/2"	15.5#	3,320'	60-40 Pozmix	150	

**LINER RECORD**

**PERFORATION RECORD**

Top, ft.	Bottom, ft.	Sacks cement	Shots per ft.	Size & type Steel DP Carrier	Depth interval
			4		2916-2920 (Topeka)

TUBING RECORD		
Size	Setting depth	Packer set at
2-3/8" OD	2,990'	2,990'

**ACID, FRACTURE, SHOT, CEMENT SQUEEZE RECORD**

Amount and kind of material used	Depth interval treated
500 gal. 15% (Halliburton)	2916-2920

**INITIAL PRODUCTION**

Date of first production September 7, 1979		Producing method (flowing, pumping, gas lift, etc.) Pumping	
RATE OF PRODUCTION PER 24 HOURS	Oil 25 bbls.	Gas MCF	Water -0- bbls.
Disposition of gas (vented, used on lease or sold)		Producing interval (s) Topeka	

INSTRUCTIONS: As provided in KCC Rule 82-2-125, within 90 days after completion of a well, one completed copy of this Drillers Log shall be transmitted to the State Geological Survey of Kansas, 4150 Monroe Street, Wichita, Kansas 67209. Copies of this form are available from the Conservation Division, State Corporation Commission, 3830 So. Meridian (P.O. Box 17027), Wichita, Kansas 66217. Phone AC 316-522-2206. If confidential custody is desired, please note Rule 82-2-125. Drillers Logs will be on open file in the Oil and Gas Division, State Geological Survey of Kansas, Lawrence, Kansas 66044.

Operator ICER ADDIS		DESIGNATE TYPE OF COMP.: OIL, GAS, DRY HOLE, SWDW, ETC.:
Well No. 4	Lease Name TINDALL	OIL WELL
S2 T 18 R 13 W		


**WELL LOG**

Show all important zones of porosity and contents thereof; cored intervals, and all drill-stem tests, including depth interval tested, cushion used, time tool open, flowing and shut-in pressures, and recoveries.

SHOW GEOLOGICAL MARKERS, LOGS RUN, OR OTHER DESCRIPTIVE INFORMATION.

FORMATION DESCRIPTION, CONTENTS, ETC.	TOP	BOTTOM	NAME	DEPTH	
Anhydrite	695		Gamma Ray/ Neutron (Petro-Log)	3,331-2,700	
Topeka	2,685			3,331-Surface	
Heebner	2,970				
Toronto	2,988				
Douglas	2,998				
Brown Lime	3,060				
Lansing	3,072				
Base Kansas City	3,305				
Conglomerate	3,311				
Arbuckle	3,318				
Rotary Total Depth	3,321				
DST #1: Open 60" (30-30-30-30) Recovered Gas to surface 25", 1,560' oil 120' thin oily watery mud. ISIP 1,039#, FSIP 1,019, IFP 104-417#, FFP 479-635#.	2,913	2,930			
DST #2: Open 40" (20-20-20-20) Recovered 5' mud. ISIP 52#, FSIP 42#, IFP 31#, FFP 31#.	3,111	3,135			
DST #3: Open 40" (20-20-20-20) Recovered 5' mud. ISIP 31#, FSIP 31#, IFP 21#, FFP 21#	3,140	3,156			
DST #4: Open 50" (30-30-20-30) Recovered 3' mud. ISIP 52#, FSIP 42#, IFP 31#, FFP 31# Deepened to 3,335...no recovery in Arbuckle Completed in Topeka	3,303	3,321			

USE ADDITIONAL SHEETS, IF NECESSARY, TO COMPLETE WELL RECORD.

Date Received	
	Icer Addis Signature
	Owner-Operator Title
	September 18, 1979 Date

GHELO