



POST OFFICE BOX 169

GREAT BEND, KANSAS 67530

### DRILL-STEM TEST DATA

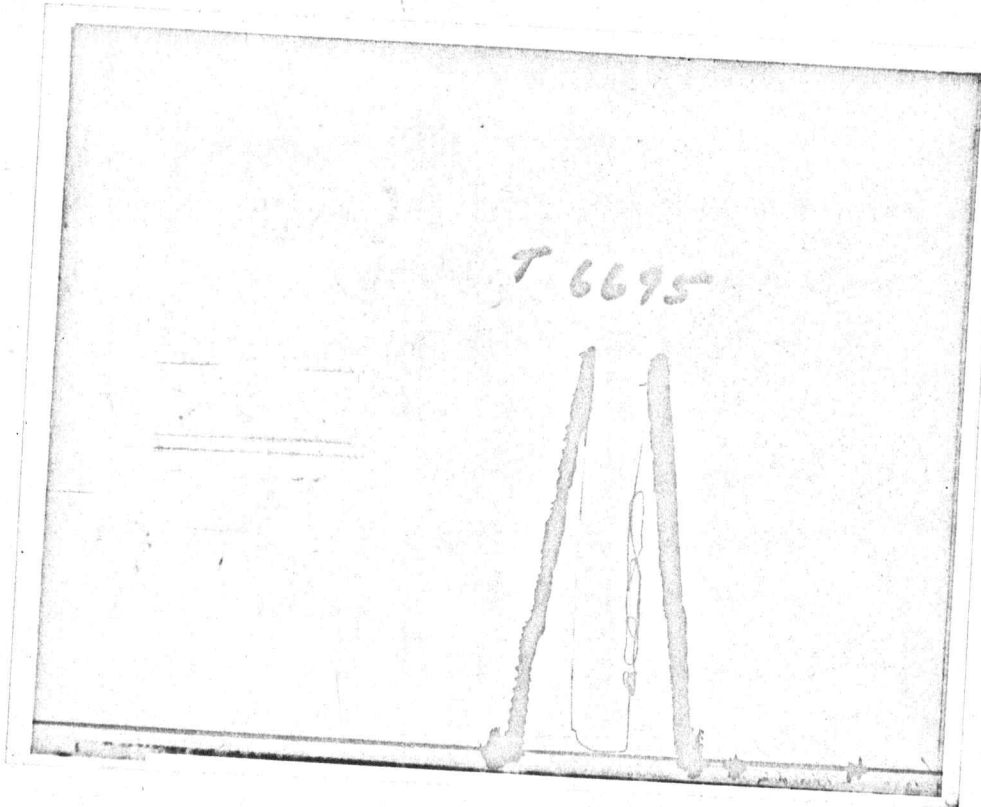
Well Name	Schneider	Test No.	1
Well Number	1	Zone Tested	K.C.
Company	Larry Stephenson	Date	2/13/72
Comp. Rep.	J.C. Musgrove	Tester	Bowman
Contractor	Red Tiger Drlg.	Ticket No.	6695
Location	18-18-14	Elevation	1932 DF

Recorder No.	3600	Clock Range	12 Hr.	Recorder No.	3550	Clock Range	12 Hr.
Depth	3100	Depth	3104				
Initial Hydro Mud Press.	1757	Initial Hydro Mud Press.	1649				
Initial Shut-in Press.	_____	Initial Shut-in Press.	_____				
Initial Flow Press.	_____	Initial Flow Press.	_____				
Final Flow Press.	18-18	Final Flow Press.	37-37				
Final Shut-in Press.	108	Final Shut-in Press.	126				
Final Hydro Mud Press.	1751	Final Hydro Mud Press.	1649				
Temperature	99	Tool Open Before I. S. I.	_____	Mins.			
Mud Weight	10.1	Viscosity	39	Initial Shut-in	_____	Mins.	
Fluid Loss	_____	Flow Period	20	Mins.			
Interval Tested	3092-3107	Final Shut-in	20	Mins.			
Top Packer Depth	3092	Surface Choke Size	5/8				
Bottom Packer Depth	_____	Bottom Choke Size	5/8				
Total Depth	3107	Main Hole Size	7 7/8				
Drill Pipe Size	4 1/2 F.H. Wt.	Rubber Size	6 3/4				
Drill Collar I. D.	_____	Ft. Run	_____				
Recovery—Total Feet	_____						
Recovered	10	Feet Of	Drlg Mud				
Recovered	_____	Feet Of	_____				
Recovered	_____	Feet Of	_____				
Recovered	_____	Feet Of	_____				

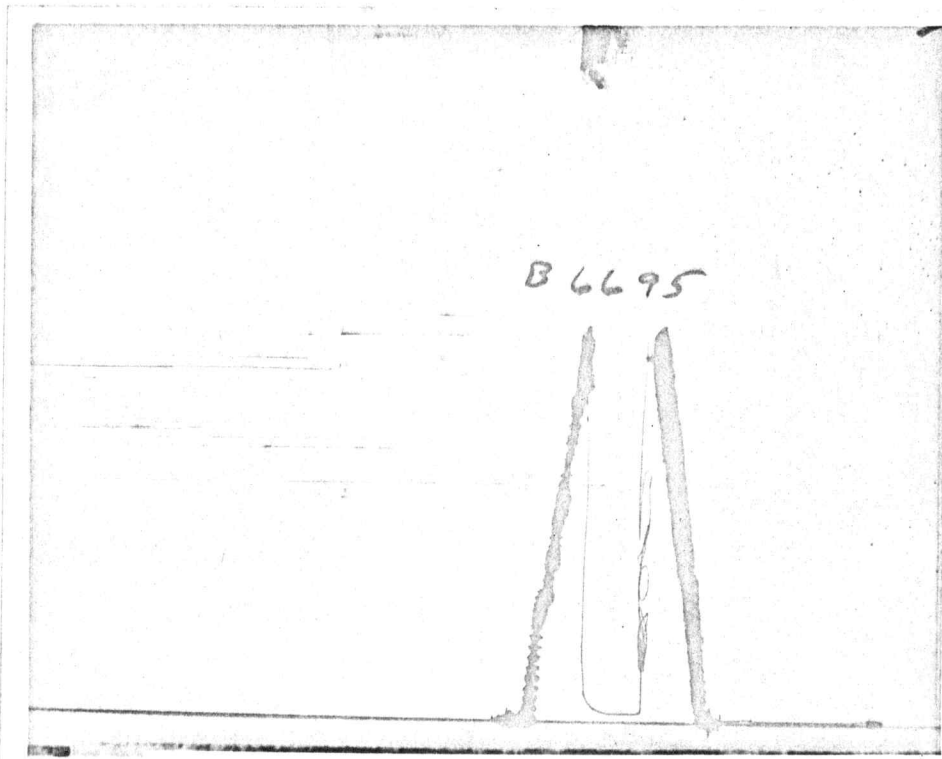
Remarks

Very Weak Blow Dead In 7 Min.

Test # 1 6695



Top



Bottom



POST OFFICE BOX 169

GREAT BEND, KANSAS 67530

### DRILL-STEM TEST DATA

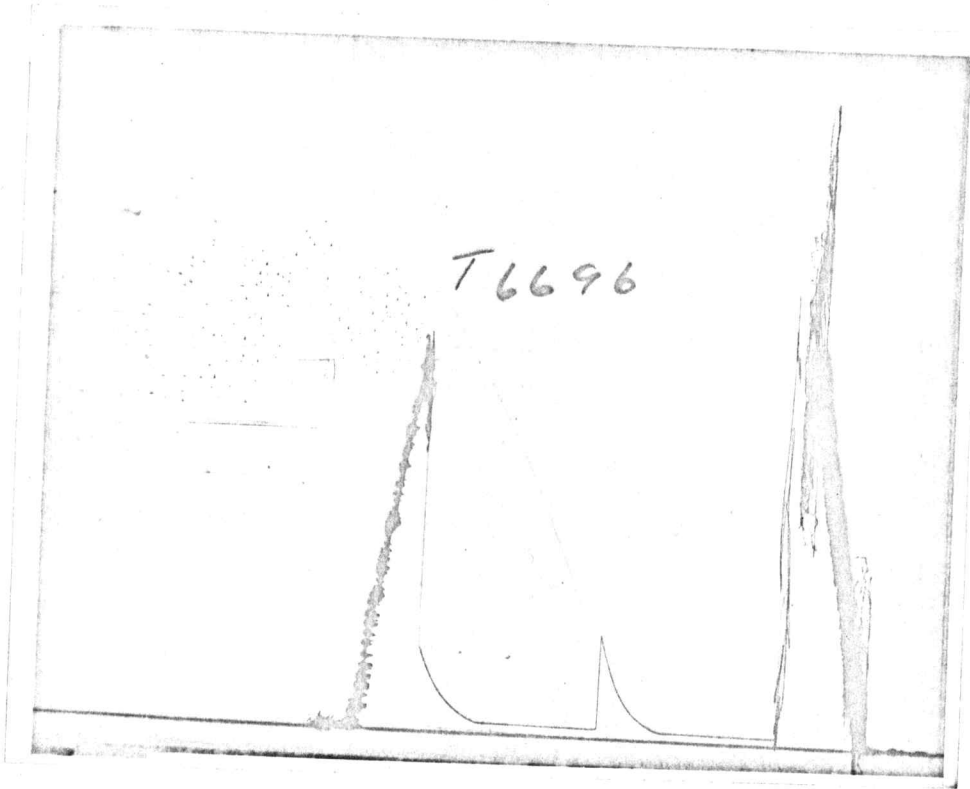
Well Name	Schneider	Test No.	2
Well Number	1	Zone Tested	K.C.
Company	Larry Stephenson	Date	2/14/72
Comp. Rep.	J.C. Musgrove	Tester	Bowman
Contractor	Red Tiger Drlg	Ticket No.	6696
Location	18-18-14	Elevation	1932 DF

Recorder No. 3600 Clock Range 12 Hr. Recorder No. 3550 Clock Range 12 Hr.  
 Depth 3240 Depth 3243  
 Initial Hydro Mud Press. 1838 Initial Hydro Mud Press. 1758  
 Initial Shut-in Press. 494 Initial Shut-in Press. 451  
 Initial Flow Press. 34-34 Initial Flow Press. 10-10  
 Final Flow Press. 38-38 Final Flow Press. 17-17  
 Final Shut-in Press. 400 Final Shut-in Press. 348  
 Final Hydro Mud Press. 1830 Final Hydro Mud Press. 1756  
 Temperature 105 Tool Open Before I. S. I. 90 Mins.  
 Mud Weight 10.1 Viscosity 39 Initial Shut-in 45 Mins.  
 Fluid Loss \_\_\_\_\_ Flow Period 90 Mins.  
 Interval Tested 3233-3246 Final Shut-in 45 Mins.  
 Top Packer Depth 3233 Surface Choke Size 5/8  
 Bottom Packer Depth \_\_\_\_\_ Bottom Choke Size 5/8  
 Total Depth 3246 Main Hole Size 7 7/8  
 Drill Pipe Size 4 1/2 F.H. Wt. \_\_\_\_\_ Rubber Size 6 3/4  
 Drill Collar I. D. \_\_\_\_\_ Ft. Run \_\_\_\_\_  
 Recovery—Total Feet \_\_\_\_\_  
 Recovered 60 Feet Of Gas In Pipe  
 Recovered 30 Feet Of Sli. Oil & Gas Cut Mud  
 Recovered \_\_\_\_\_ Feet Of \_\_\_\_\_  
 Recovered \_\_\_\_\_ Feet Of \_\_\_\_\_

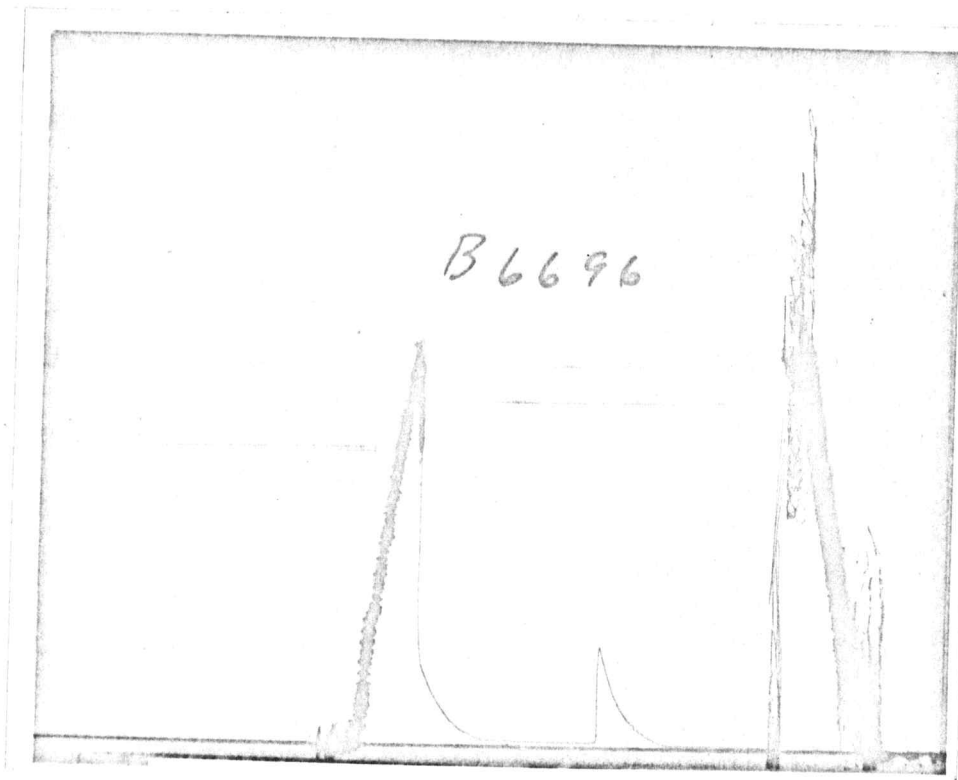
Remarks

Weak Blow Thru-Out Test

Test # 2 6696



Top



Bottom



POST OFFICE BOX 169

GREAT BEND, KANSAS 67530

### DRILL-STEM TEST DATA

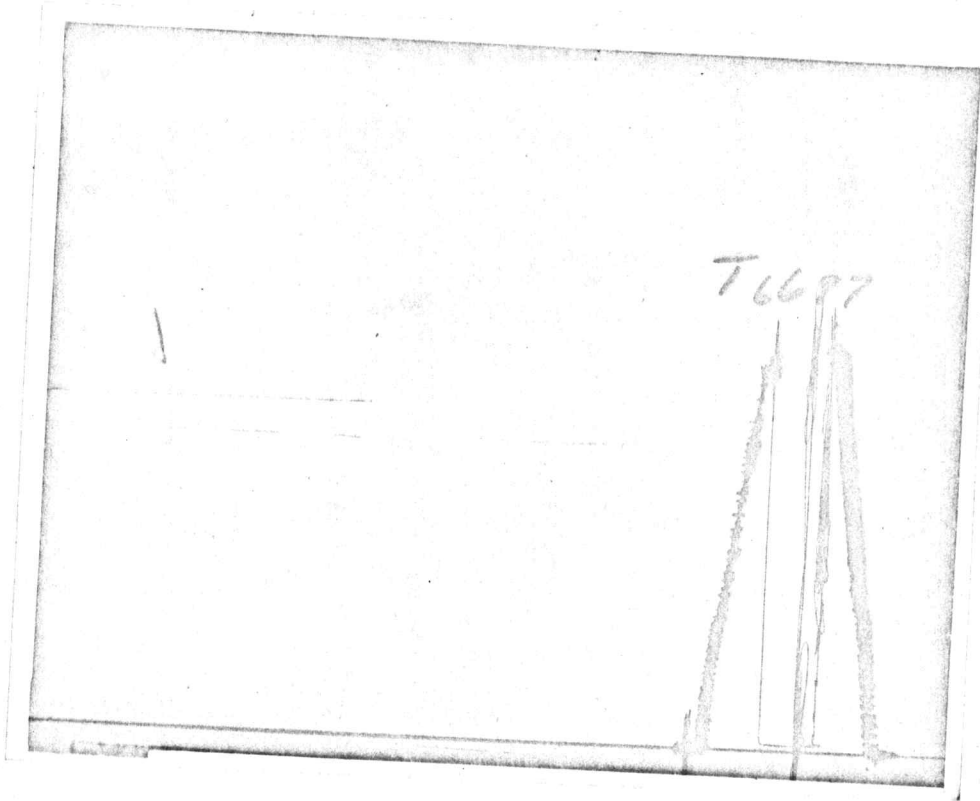
Well Name	Schneider	Test No.	3
Well Number	1	Zone Tested	K.C.
Company	Larry Stephenson	Date	2/15/72
Comp. Rep.	J.C. Musgrove	Tester	Bowman
Contractor	Red Tiger Drlg.	Ticket No.	6697
Location	18-18-14	Elevation	1932 DF

Recorder No. 3600 Clock Range 12 Hr. Recorder No. 3550 Clock Range 12 Hr.  
 Depth 3388 Depth 3390  
 Initial Hydro Mud Press. 1852 Initial Hydro Mud Press. 1844  
 Initial Shut-in Press. \_\_\_\_\_ Initial Shut-in Press. \_\_\_\_\_  
 Initial Flow Press. \_\_\_\_\_ Initial Flow Press. \_\_\_\_\_  
 Final Flow Press. 24-24 Final Flow Press. 14-14  
 Final Shut-in Press. 26 Final Shut-in Press. 17  
 Final Hydro Mud Press. 1800 Final Hydro Mud Press. 1840  
 Temperature 106 Tool Open Before I. S. I. \_\_\_\_\_ Mins.  
 Mud Weight 10.1 Viscosity 39 Initial Shut-in \_\_\_\_\_ Mins.  
 Fluid Loss \_\_\_\_\_ Flow Period 20 Mins.  
 Interval Tested 3383-3393 Final Shut-in \_\_\_\_\_ Mins.  
 Top Packer Depth 3378 Surface Choke Size 5/8  
 Bottom Packer Depth 3383 Bottom Choke Size 5/8  
 Total Depth 3393 Main Hole Size 7 7/8  
 Drill Pipe Size 4 1/2 F.H. Wt. \_\_\_\_\_ Rubber Size 6 3/4  
 Drill Collar I. D. \_\_\_\_\_ Ft. Run \_\_\_\_\_  
 Recovery—Total Feet \_\_\_\_\_  
 Recovered 5 Feet Of Mud  
 Recovered \_\_\_\_\_ Feet Of \_\_\_\_\_  
 Recovered \_\_\_\_\_ Feet Of \_\_\_\_\_  
 Recovered \_\_\_\_\_ Feet Of \_\_\_\_\_

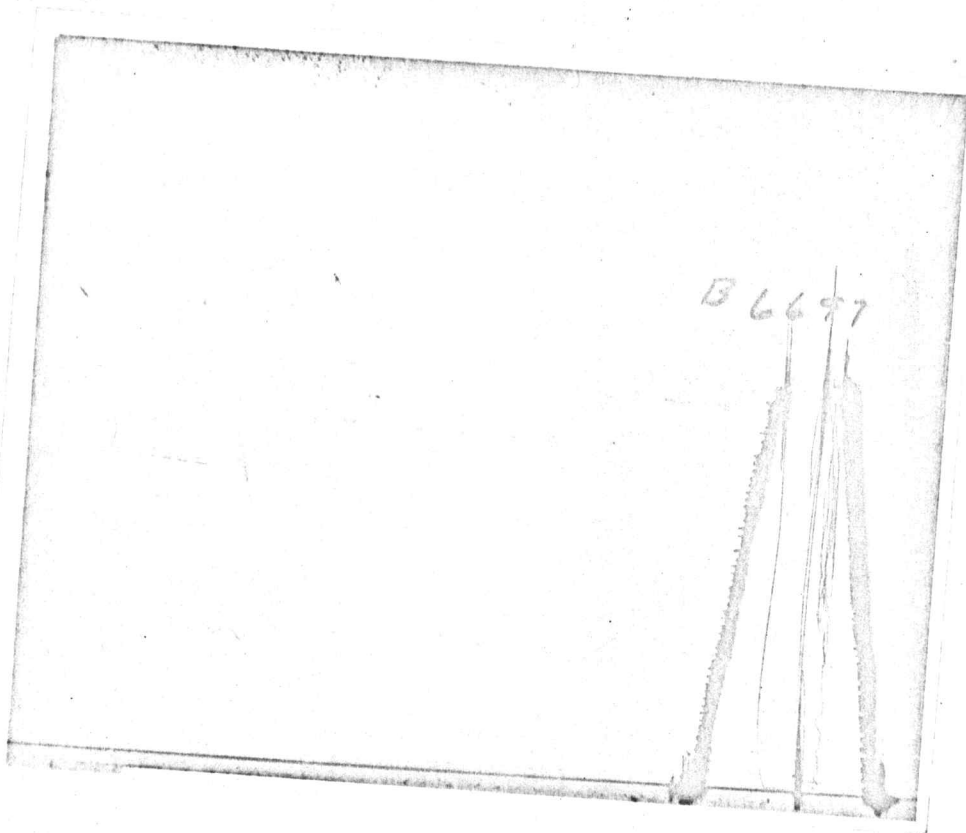
Remarks

Very Weak Blow Dead In 5 Min.

Test # 3 6697



Top



Bottom



POST OFFICE BOX 169

GREAT BEND, KANSAS 67530

### DRILL-STEM TEST DATA

Well Name	Schneider	Test No.	4
Well Number	1	Zone Tested	K.C.
Company	Larry Stephenson	Date	2/15/72
Comp. Rep.	J.C. Musgrove	Tester	Bowman
Contractor	Red Tiger Drlg.	Ticket No.	6698
Location	18-18-14	Elevation	1932 DF

Recorder No.	3600	Clock Range	12 Hr.	Recorder No.	3550	Clock Range	12 Hr.
Depth	3427	Depth	3429				
Initial Hydro Mud Press.	1916	Initial Hydro Mud Press.	1815				
Initial Shut-in Press.	_____	Initial Shut-in Press.	_____				
Initial Flow Press.	_____	Initial Flow Press.	_____				
Final Flow Press.	49-49	Final Flow Press.	30-30				
Final Shut-in Press.	58	Final Shut-in Press.	37				
Final Hydro Mud Press.	1916	Final Hydro Mud Press.	1810				
Temperature	110	Tool Open Before I. S. I.	_____ Mins.				
Mud Weight	10.1	Viscosity	39	Initial Shut-in	_____ Mins.		
Fluid Loss	_____	Flow Period	20				
Interval Tested	3392-3431	Final Shut-in	20				
Top Packer Depth	3387	Surface Choke Size	5/8				
Bottom Packer Depth	3392	Bottom Choke Size	5/8				
Total Depth	3431	Main Hole Size	7 7/8				
Drill Pipe Size	4 1/2 F.H. Wt.	Rubber Size	6 3/4				
Drill Collar I. D.	_____	Ft. Run	_____				

Recovery—Total Feet \_\_\_\_\_

Recovered 3 Feet Of \_\_\_\_\_ Mud \_\_\_\_\_

Recovered \_\_\_\_\_ Feet Of \_\_\_\_\_

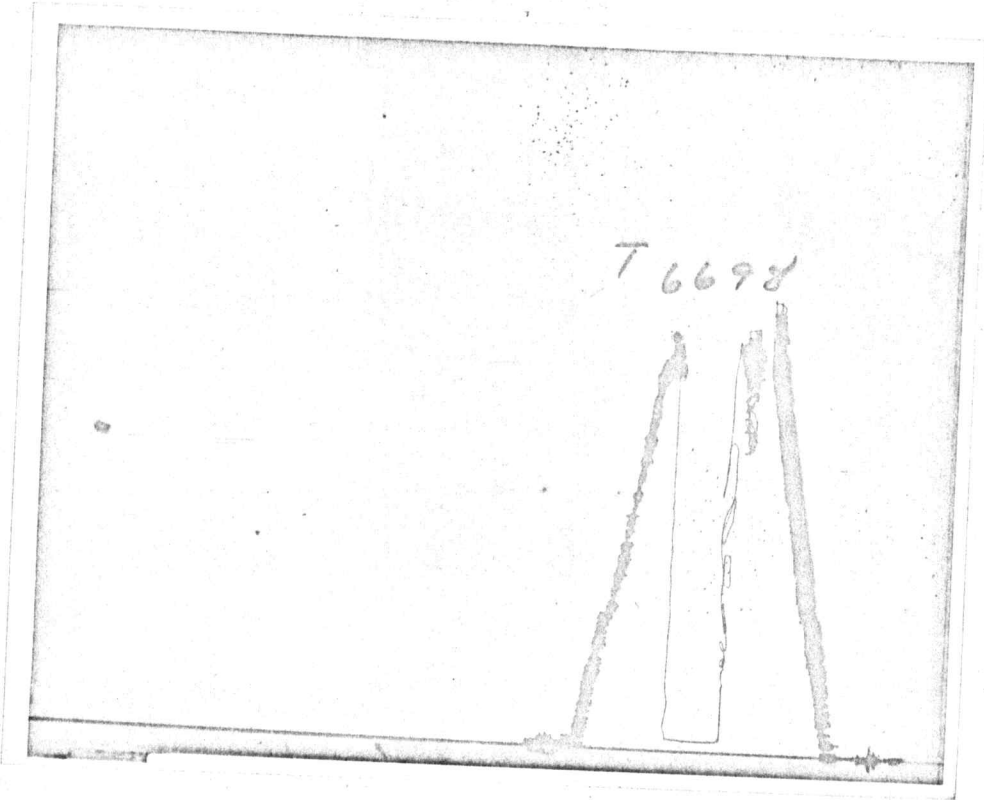
Recovered \_\_\_\_\_ Feet Of \_\_\_\_\_

Recovered \_\_\_\_\_ Feet Of \_\_\_\_\_

Remarks

Very Weak Dead In 5 Min.

Test # 4 6698



Top



Bottom