



15-009-24815

10-18s-15w
ORIGINAL

DIAMOND TESTING
P.O. Box 157
HOISINGTON, KANSAS 67544
(620) 653-7550 • (800) 542-7313
STC 21083.D29

Page 1 of 2 Pages

Company L. D. Drilling, Inc. Lease & Well No. Frieb No. 1
Elevation 1960 KB Formation Chase/Winfield Effective Pay -- Ft. Ticket No. J1619
Date 2-23-05 Sec. 10 Twp. 18S Range 15W County Barton State Kansas
Test Approved By Kim B. Shoemaker Diamond Representative John C. Riedl

Formation Test No. 1 Interval Tested from 1,794 ft. to 1,909 ft. Total Depth 1,909 ft.
Packer Depth 1,789 ft. Size 6 3/4 in. Packer Depth -- ft. Size -- in.
Packer Depth 1,794 ft. Size 6 3/4 in. Packer Depth -- ft. Size -- in.
Depth of Selective Zone Set ft.

Top Recorder Depth (Inside) 1,797 ft. Recorder Number 21083 Cap. 5,000 psi
Bottom Recorder Depth (Outside) 1,806 ft. Recorder Number 11073 Cap. 4,000 psi
Below Straddle Recorder Depth ft. Recorder Number Cap. psi

Drilling Contractor VAL Energy, Inc. - Rig 3 Drill Collar Length 180 ft. I.D. 2 1/4 in.
Mud Type Spotted Mud on Bottom Viscosity N/A Weight Pipe Length -- ft. I.D. -- in.
Weight N/A Water Loss N/A cc. Drill Pipe Length 1,594 ft. I.D. 3 1/2 in.
Chlorides N/A P.P.M. Test Tool Length 20 ft. Tool Size 3 1/2 - IF in.
Jars: Make Bowen Serial Number Not Run Anchor Length 115 ft. Size 4 1/2 - FH in.
Did Well Flow? No Reversed Out No Surface Choke Size 1 in. Bottom Choke Size 5/8 in.
Main Hole Size 7 7/8 in. Tool Joint Size 4 1/2 - XH in.

Blow: 1st Open: Strong blow. Decreasing to 10 ins. by end. Off bottom of bucket in 8 mins. No blow back during shut-in.
2nd Open: Fair, 4 in., blow. No blow back during shut-in.

Recovered 200 ft. of drilling mud = 1.169600 bbls. (Grind out: 15%-water; 85%-mud) Chlorides: 55,000 Ppm
Recovered ft. of
Recovered ft. of
Recovered ft. of
Recovered ft. of

Remarks

Time Set Packer(s) 8:30 ^{AM} P.M. Time Started Off Bottom 11:30 ^{AM} P.M. Maximum Temperature 81 °
Initial Hydrostatic Pressure (A) 933 P.S.I.
Initial Flow Period Minutes 30 (B) 43 P.S.I. to (C) 90 P.S.I.
Initial Closed In Period Minutes 45 (D) 443 P.S.I.
Final Flow Period Minutes 45 (E) 98 P.S.I. to (F) 129 P.S.I.
Final Closed In Period Minutes 60 (G) 422 P.S.I.
Final Hydrostatic Pressure (H) 909 P.S.I.

GENERAL INFORMATION

Client Information:

Company: L D DRILLING INC

Contact: L D DAVIS

Phone: Fax: e-mail:

Site Information:

Contact: KIM SHOEMAKER

Phone: Fax: e-mail:

Well Information:

Name: FRIEB #1

Operator: L D DRILLING INC

Location-Downhole: DST #1 1794-1009

Location-Surface: S10/18S/15W BARTON COUNTY

Test Information:

Company: DIAMOND TESTING

Representative: JOHN RIEDL

Supervisor: KIM SHOEMAKER

Test Type: CONVENTIONAL Job Number: D29

Test Unit: 2

Start Date: 2005/02/23 Start Time: 19:00:00

End Date: 2005/02/24 End Time: 01:17:20

Report Date: 2005/02/24 Prepared By: JOHN RIEDL

Qualified By: KIM SHOEMAKER

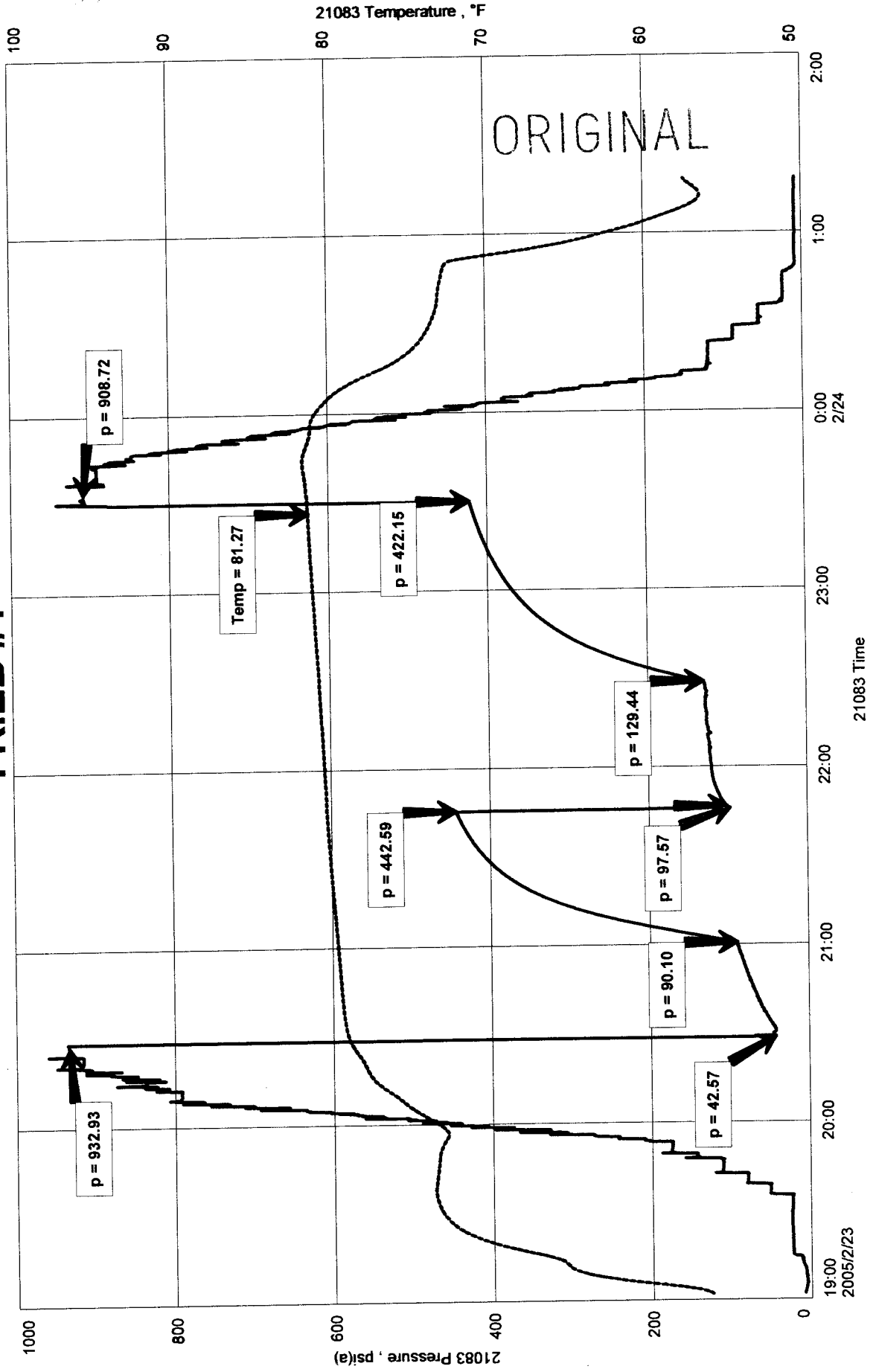
Remarks:

RECOVERY: 200' DRILLING MUD

FRIEB #1
Formation: CHASE
Job Number: D29

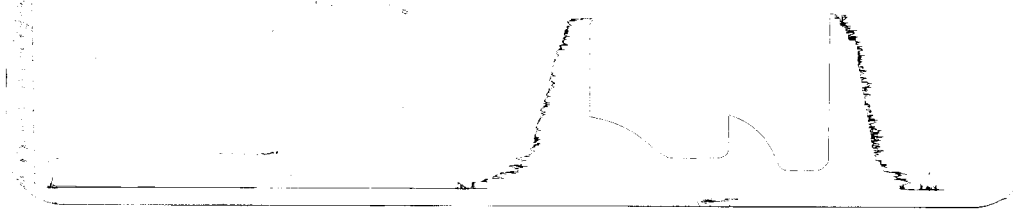
LD DRILLING INC
DST #1 1794-1009
Start Test Date: 2005/02/23
Final Test Date: 2005/02/24

FRIEB #1



611 R
FR 108 #1
OST #1

RBC #1077 OUTSIDE
LOC 1706



This is an actual photograph of recorder chart.

POINT	PRESSURE		PSI
	Field Reading	Elec. Office Reading	
(A) Initial Hydrostatic Mud	933	933	PSI
(B) First Initial Flow Pressure.....	43	43	PSI
(C) First Final Flow Pressure	90	90	PSI
(D) Initial Closed-in Pressure	443	443	PSI
(E) Second Initial Flow Pressure.....	98	98	PSI
(F) Second Final Flow Pressure.....	129	129	PSI
(G) Final Closed-in Pressure	422	422	PSI
(H) Final Hydrostatic Mud	909	909	PSI



DIAMOND TESTING
P.O. Box 157
HOISINGTON, KANSAS 67544
(620) 653-7550 • (800) 542-7313
STC 21083.D30

ORIGINAL

Company L. D. Drilling, Inc. Lease & Well No. Frieb No. 1
Elevation 1960 KB Formation Cottonwood/Neva Effective Pay --Ft. Ticket No. J1620
Date 2-24-05 Sec. 10 Twp. 18S Range 15W County Barton State Kansas
Test Approved By Kim B. Shoemaker Diamond Representative John C. Riedl

Formation Test No. 2 Interval Tested from 2,212 ft. to 2,350 ft. Total Depth 2,350 ft.
Packer Depth 2,207 ft. Size 6 3/4 in. Packer Depth -- ft. Size -- in.
Packer Depth 2,212 ft. Size 6 3/4 in. Packer Depth -- ft. Size -- in.
Depth of Selective Zone Set ft.

Top Recorder Depth (Inside) 2,215 ft. Recorder Number 21083 Cap. 5,000 psi
Bottom Recorder Depth (Outside) 2,347 ft. Recorder Number 11073 Cap. 4,000 psi
Below Straddle Recorder Depth ft. Recorder Number Cap. psi

Drilling Contractor VAL Energy, Inc. - Rig 3 Drill Collar Length 120 ft. I.D. 2 1/4 in.
Mud Type Spotted Mud on Bottom Viscosity N/A Weight Pipe Length -- ft. I.D. -- in.
Weight N/A Water Loss N/A cc. Drill Pipe Length 2,072 ft. I.D. 3 1/2 in.
Chlorides N/A P.P.M. Test Tool Length 20 ft. Tool Size 3 1/2 - IF in.
Jars: Make Bowen Serial Number Not Run Anchor Length 138 ft. Size 4 1/2 - FH in.
Did Well Flow? No Reversed Out No Surface Choke Size 1 in. Bottom Choke Size 5/8 in.
Main Hole Size 7 7/8 in. Tool Joint Size 4 1/2 - XH in.

Blow: 1st Open: Strong blow. Off bottom of bucket in 6 mins. No blow back during shut-in.
2nd Open: Strong blow slowly building to 9 ins. No blow back during shut-in.

Recovered 240 ft. of slightly gas cut mud = 2.294400 bbls. (Grind out: 2%-water; 5%-gas; 93%-mud) Chlorides: 17,000 Ppm
Recovered ft. of
Recovered ft. of
Recovered ft. of
Recovered ft. of

Remarks Tool Sample Grind Out: 1%-water; 3%-gas; 94%-mud with oil specks

Time Set Packer(s) 10:40 ~~AM~~ ^{P.M.} Time Started Off Bottom 1:40 ~~P.M.~~ ^{A.M.} Maximum Temperature 88°
Initial Hydrostatic Pressure (A) 1174 P.S.I.
Initial Flow Period Minutes 30 (B) 39 P.S.I. to (C) 97 P.S.I.
Initial Closed In Period Minutes 45 (D) 675 P.S.I.
Final Flow Period Minutes 45 (E) 103 P.S.I. to (F) 140 P.S.I.
Final Closed In Period Minutes 60 (G) 660 P.S.I.
Final Hydrostatic Pressure (H) 1139 P.S.I.

GENERAL INFORMATION

Client Information:

Company: L D DRILLING INC

Contact: L D DAVIS

Phone: Fax: e-mail:

Site Information:

Contact: KIM SHOEMAKER

Phone: Fax: e-mail:

Well Information:

Name: FRIEB #1

Operator: L D DRILLING INC

Location-Downhole: DST #2 2212-2350

Location-Surface: S10/18S/15W BARTON COUNTY

Test Information:

Company: DIAMOND TESTING

Representative: JOHN RIEDL

Supervisor: KIM SHOEMAKER

Test Type: CONVENTIONAL Job Number: D30

Test Unit: 2

Start Date: 2005/02/24 Start Time: 21:25:00

End Date: 2005/02/25 End Time: 03:54:40

Report Date: 2005/02/25 Prepared By: JOHN RIEDL

Qualified By: KIM SHOEMAKER

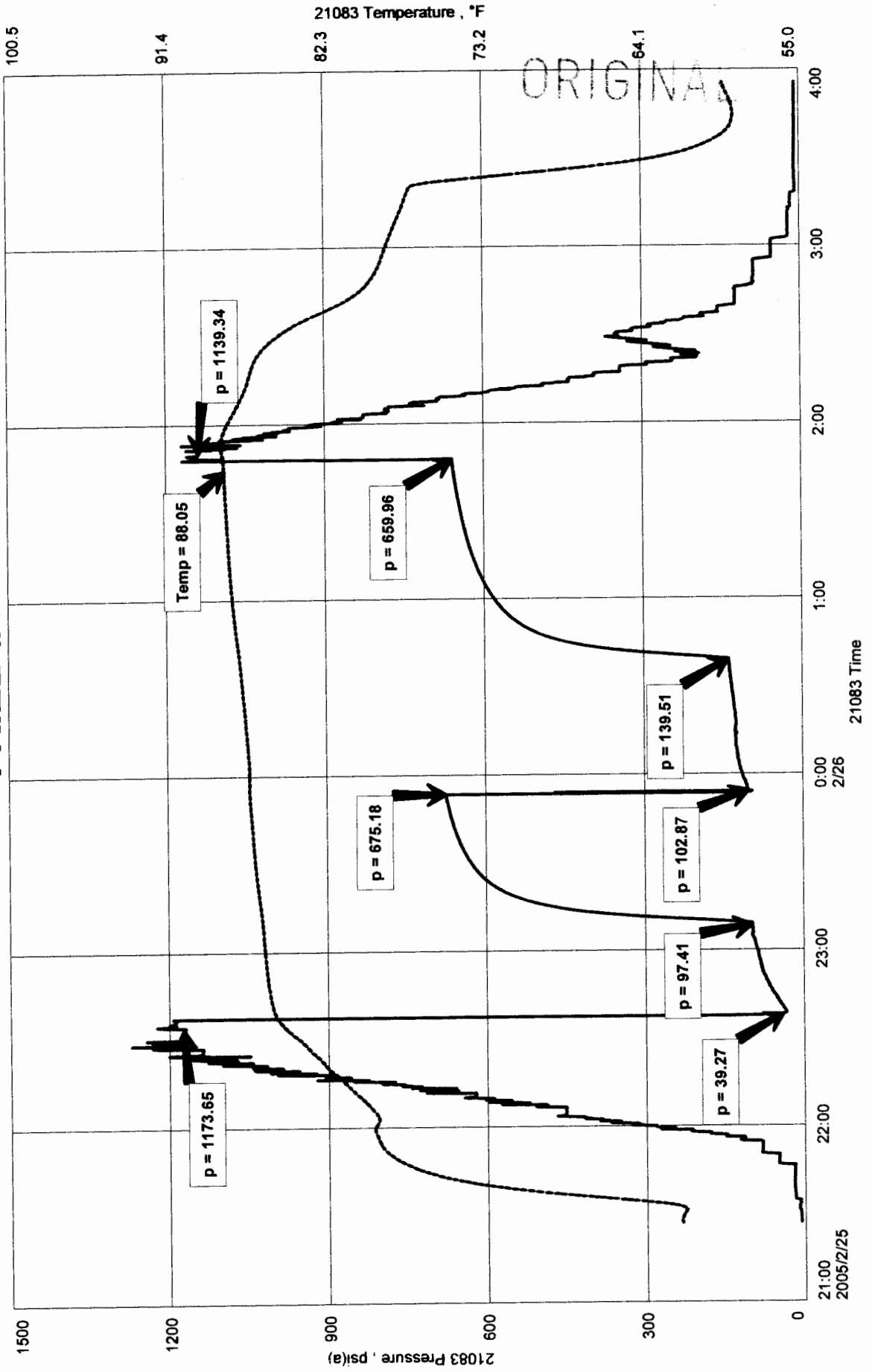
Remarks:

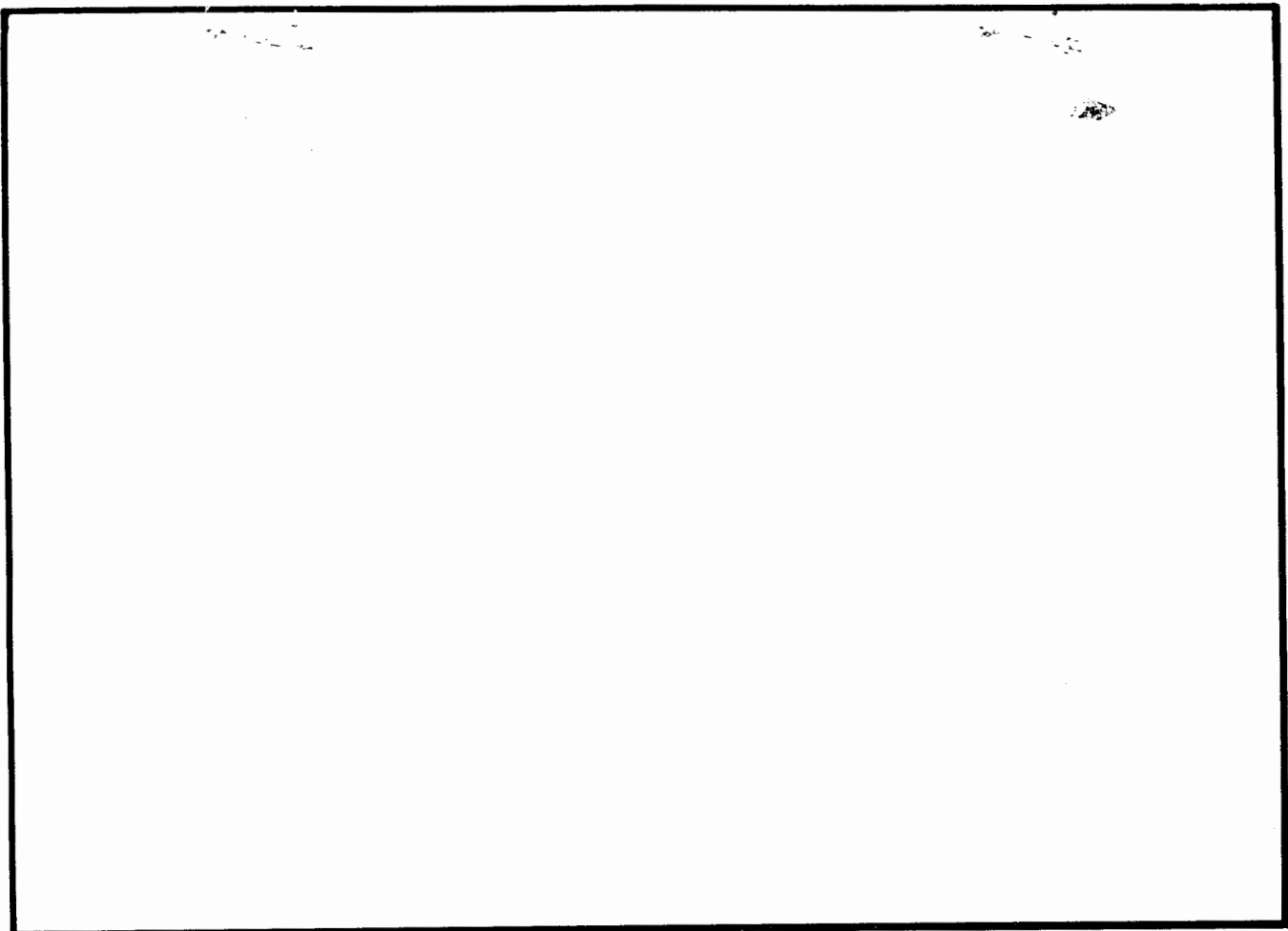
RECOVERY: 240' SLGCM [5%GAS 2%WATER 93%MUD] OIL SPECKS IN TOOL SAMPLE

FRIEB #1
Formation: COTTONWOOD/NEVA
Job Number: D30

L D DRILLING INC
DST #2 2212-2350
Start Test Date: 2005/02/24
Final Test Date: 2005/02/25

FRIEB #1





This is an actual photograph of recorder chart.

POINT	PRESSURE		PSI
	Field Reading	Elec. Office Reading	
(A) Initial Hydrostatic Mud	1174	1174	PSI
(B) First Initial Flow Pressure.....	39	39	PSI
(C) First Final Flow Pressure	97	97	PSI
(D) Initial Closed-in Pressure	675	675	PSI
(E) Second Initial Flow Pressure	103	103	PSI
(F) Second Final Flow Pressure.....	140	140	PSI
(G) Final Closed-in Pressure.....	660	660	PSI
(H) Final Hydrostatic Mud	1139	1139	PSI



DIAMOND TESTING

ORIGINAL

P.O. Box 157
 HOISINGTON, KANSAS 67544
 (620) 653-7550 • (800) 542-7313
 STC 21083.D31

Company L. D. Drilling, Inc. Lease & Well No. Frieb No. 1

Elevation 1960 KB Formation Topeka (Plattsmouth) Effective Pay --Ft. Ticket No. J1621

Date 2-26-05 Sec. 10 Twp. 18S Range 15W County Barton State Kansas

Test Approved By Kim B. Shoemaker Diamond Representative John C. Riedl

Formation Test No. 3 Interval Tested from 3,127 ft. to 3,146 ft. Total Depth 3,146 ft.

Packer Depth 3,122 ft. Size 6 3/4 in. Packer Depth -- ft. Size -- in.

Packer Depth 3,127 ft. Size 6 3/4 in. Packer Depth -- ft. Size -- in.

Depth of Selective Zone Set ft.

Top Recorder Depth (Inside) 3,130 ft. Recorder Number 21083 Cap. 5,000 psi

Bottom Recorder Depth (Outside) 3,143 ft. Recorder Number 11073 Cap. 4,000 psi

Below Straddle Recorder Depth ft. Recorder Number Cap. psi

Drilling Contractor VAL Energy, Inc. - Rig 3 Drill Collar Length -- ft. I.D. -- in.

Mud Type Chemical Viscosity 50 Weight Pipe Length -- ft. I.D. -- in.

Weight 8.9 Water Loss 8.0 cc. Drill Pipe Length 3,107 ft. I.D. 3 1/2 in.

Chlorides 2,000 P.P.M. Test Tool Length 20 ft. Tool Size 3 1/2 - IF in.

Jars: Make Bowen Serial Number Not Run Anchor Length 19 ft. Size 4 1/2 - FH in.

Did Well Flow? No Reversed Out No Surface Choke Size 1 in. Bottom Choke Size 5/8 in.

Main Hole Size 7 7/8 in. Tool Joint Size 4 1/2 - XH in.

Blow: 1st Open: Strong blow. Off bottom of bucket in 1 min. 1 in. blow back during shut-in.
2nd Open: Strong blow. Off bottom of bucket in 5 mins. Gas to surface in 32 mins. Too small to measure.

Recovered 600 ft. of gassy oil = 8.520000 bbls. (Grind out: 35%-gas; 65%-oil) Gravity: 19 @ 60°

Recovered ft. of

Recovered ft. of

Recovered ft. of

Recovered ft. of

Remarks Gas sample taken. Gas burned.

Time Set Packer(s) 8:42 ^{XXM.} P.M. Time Started Off Bottom 11:42 ^{XXM.} P.M. Maximum Temperature 111°

Initial Hydrostatic Pressure (A) 1463 P.S.I.

Initial Flow Period Minutes 30 (B) 46 P.S.I. to (C) 114 P.S.I.

Initial Closed In Period Minutes 45 (D) 999 P.S.I.

Final Flow Period Minutes 45 (E) 144 P.S.I. to (F) 205 P.S.I.

Final Closed In Period Minutes 60 (G) 1004 P.S.I.

Final Hydrostatic Pressure (H) 1459 P.S.I.



DIAMOND TESTING
P.O. Box 157
HOISINGTON, KANSAS 67544
(620) 653-7550 • (800) 542-7313

FLUID SAMPLE DATA

Company L. D. Drilling, Inc.

Lease & Well No. Frieb No. 1

Date 2-26-05 Sec. 10 Twp. 18 S Range 15 W

Formation Test No. 3 Interval Tested From 3,127 ft. to 3,146 ft. Total Depth 3,146 ft.

Formation Topeka (Plattsmouth)

	<u>MUD PIT</u>	<u>RECOVERY</u>
Viscosity	<u>50</u> CP	<u>--</u> CP
Weight	<u>8.9</u>	<u>--</u>
Water Loss	<u>8.0</u> CC	<u>--</u> CC
PH Factor	<u>10.5</u>	<u>--</u>

	<u>RESISTIVITY</u>	<u>CHLORIDE CONTENT</u>
Recovery Water	<u>-- @ -- °F.</u>	<u>-- ppm</u>
Recovery Mud	<u>-- @ -- °F.</u>	<u>-- ppm</u>
Recovery Mud Filtrate	<u>-- @ -- °F.</u>	<u>-- ppm</u>
Mud Pit Sample	<u>-- @ -- °F.</u>	<u>-- ppm</u>
Mud Pit Sample Filtrate	<u>4.50 @ 50 °F.</u>	<u>1,900 ppm</u>

Sample Taken By JOHN C. RIEDL

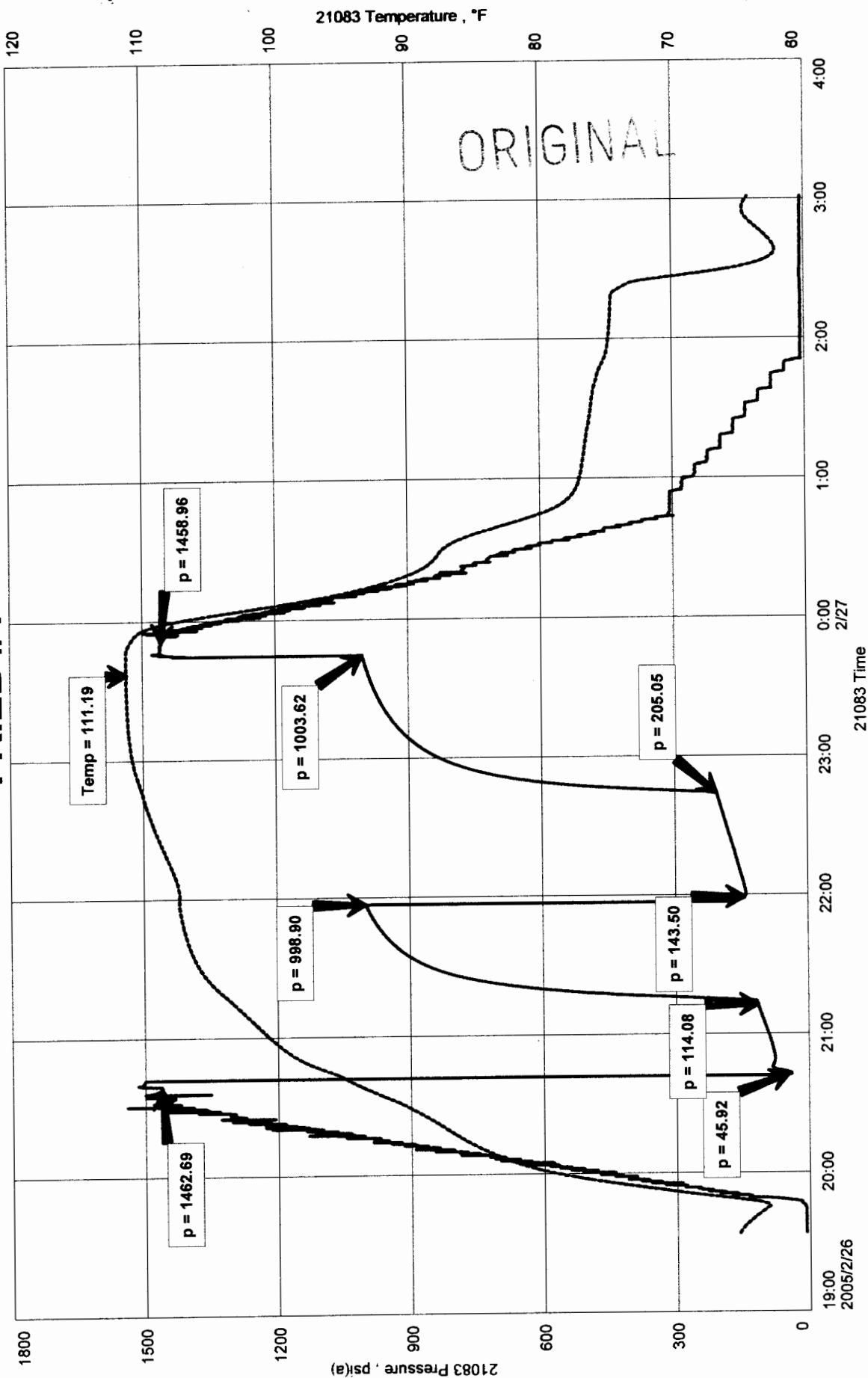
Witness By Kim B. Shoemaker

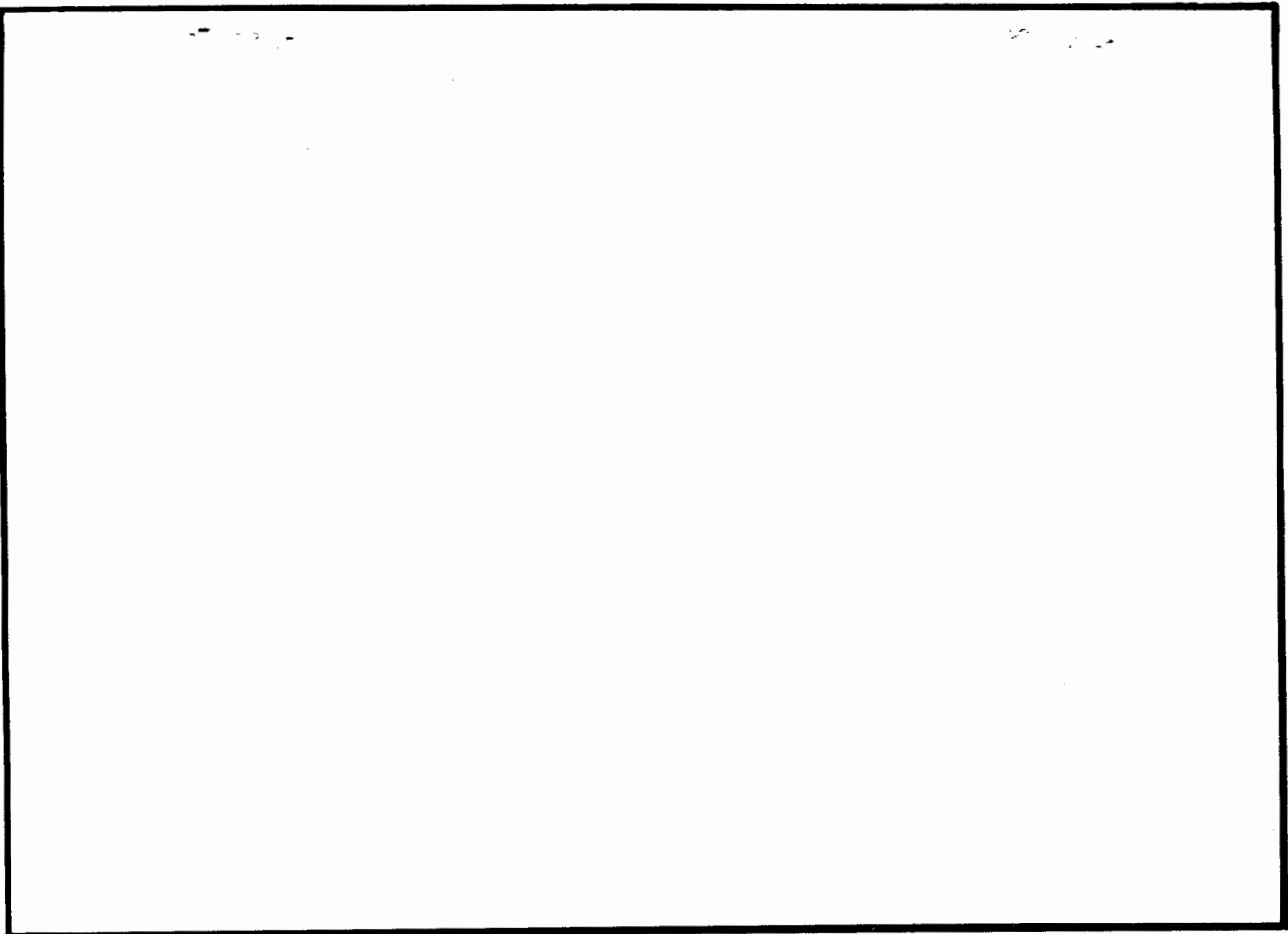
Remarks Pit filtrate triton dish chlorides were 2,000 Ppm.

FRIEB #1
 Formation: TOPEKA [PLATTSMOUTH]
 Job Number: D31

L D DRILLING INC
 DST #3 3127-3146
 Start Test Date: 2005/02/26
 Final Test Date: 2005/02/27

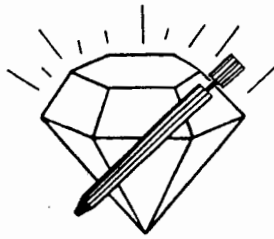
FRIEB #1





This is an actual photograph of recorder chart.

POINT	PRESSURE		PSI
	Field Reading	Elec. Office Reading	
(A) Initial Hydrostatic Mud	1463	1463	PSI
(B) First Initial Flow Pressure.....	46	46	PSI
(C) First Final Flow Pressure	114	114	PSI
(D) Initial Closed-in Pressure	999	999	PSI
(E) Second Initial Flow Pressure	144	144	PSI
(F) Second Final Flow Pressure.....	205	205	PSI
(G) Final Closed-in Pressure	1004	1004	PSI
(H) Final Hydrostatic Mud	1459	1459	PSI



DIAMOND TESTING

P.O. Box 157
HOISINGTON, KANSAS 67544
(620) 653-7550 • (800) 542-7313
STC 21083.D32

ORIGINAL

Company L. D. Drilling, Inc. Lease & Well No. Frieb No. 1
 Elevation 1960 KB Formation Lansing "A" & "B" Effective Pay --Ft. Ticket No. J1622
 Date 2-27-05 Sec. 10 Twp. 18S Range 15W County Barton State Kansas
 Test Approved By Kim B. Shoemaker Diamond Representative John C. Riedl

Formation Test No. 4 Interval Tested from 3,265 ft. to 3,294 ft. Total Depth 3,294 ft.
 Packer Depth 3,260 ft. Size 6 3/4 in. Packer Depth -- ft. Size -- in.
 Packer Depth 3,265 ft. Size 6 3/4 in. Packer Depth -- ft. Size -- in.
 Depth of Selective Zone Set ft.

Top Recorder Depth (Inside) 3,268 ft. Recorder Number 21083 Cap. 5,000 psi
 Bottom Recorder Depth (Outside) 3,291 ft. Recorder Number 11073 Cap. 4,000 psi
 Below Straddle Recorder Depth ft. Recorder Number Cap. psi

Drilling Contractor VAL Energy, Inc. - Rig 3 Drill Collar Length -- ft. I.D. -- in.
 Mud Type Chemical Viscosity 53 Weight Pipe Length -- ft. I.D. -- in.
 Weight 9.1 Water Loss 8.0 cc. Drill Pipe Length 3,245 ft. I.D. 3 1/2 in.
 Chlorides 3,000 P.P.M. Test Tool Length 20 ft. Tool Size 3 1/2 - IF in.
 Jars: Make Bowen Serial Number Not Run Anchor Length 29 ft. Size 4 1/2 - FH in.
 Did Well Flow? No Reversed Out No Surface Choke Size 1 in. Bottom Choke Size 5/8 in.
 Main Hole Size 7 7/8 in. Tool Joint Size 4 1/2 - XH in.

Blow: 1st Open: Strong blow. Off bottom of bucket in 30 secs. Gas to surface in 3 mins. Strong blow back during shut-in. (SEE GAS VOLUME REPORT)
 2nd Open: Strong blow. Gas to surface throughout. Strong blow back during shut-in. (SEE GAS VOLUME REPORT)

Recovered 100 ft. of water & gas cut oily mud = 1.420000 bbls. (Grind out: 15%-water; 25%-gas; 25%-oil; 35%-mud)
 Recovered 300 ft. of mud & gas cut oily water = 4.260000 bbls. (Grind out: 20%-mud; 20%-gas; 25%-oil; 35%-water)
 Recovered 240 ft. of gassy water = 3.408000 bbls. (Grind out: 10%-gas; 90%-water) Chlorides: 85,000 Ppm
 Recovered 640 ft. of TOTAL FLUID = 9.088000 bbls.

Recovered ft. of
 Remarks

Time Set Packer(s) 7:13 ^{XXM.} P.M. Time Started Off Bottom 10:13 ^{XXM.} P.M. Maximum Temperature 113°
 Initial Hydrostatic Pressure (A) 1543 P.S.I.
 Initial Flow Period Minutes 30 (B) 152 P.S.I. to (C) 239 P.S.I.
 Initial Closed In Period Minutes 45 (D) 706 P.S.I.
 Final Flow Period Minutes 45 (E) 242 P.S.I. to (F) 350 P.S.I.
 Final Closed In Period Minutes 60 (G) 698 P.S.I.
 Final Hydrostatic Pressure (H) 1511 P.S.I.



DIAMOND TESTING
P.O. Box 157
HOISINGTON, KANSAS 67544
(620) 653-7550 • (800) 542-7313

Page 2 of 4 Pages

FLUID SAMPLE DATA

Company L. D. Drilling, Inc.

Lease & Well No. Frieb No. 1

Date 2-27-05 Sec. 10 Twp. 18 S Range 15 W

Formation Test No. 4 Interval Tested From 3,265 ft. to 3,294 ft. Total Depth 3,294 ft.

Formation Lansing "A" & "B"

	MUD PIT	RECOVERY
Viscosity	<u>53</u> CP	<u>--</u> CP
Weight	<u>9.1</u>	<u>--</u>
Water Loss	<u>8.0</u> CC	<u>--</u> CC
PH Factor	<u>10.5</u>	<u>6.5</u>

	RESISTIVITY	CHLORIDE CONTENT
Recovery Water	<u>.10</u> @ <u>60</u> °F.	<u>90,000</u> ppm
Recovery Mud	<u>--</u> @ <u>--</u> °F.	<u>--</u> ppm
Recovery Mud Filtrate	<u>--</u> @ <u>--</u> °F.	<u>--</u> ppm
Mud Pit Sample	<u>--</u> @ <u>--</u> °F.	<u>--</u> ppm
Mud Pit Sample Filtrate	<u>3.60</u> @ <u>40</u> °F.	<u>2,900</u> ppm

Sample Taken By JOHN C. RIEDL

Witness By Kim B. Shoemaker

Remarks Pit filtrate triton dish chlorides were 3,000 Ppm.
Recovery water dish chlorides were 85,000 Ppm.

GENERAL INFORMATION

Client Information:

Company: L D DRILLING INC

Contact: L D DAVIS

Phone: Fax: e-mail:

Site Information:

Contact: KIM SHOEMAKER

Phone: Fax: e-mail:

Well Information:

Name: FRIEB #1

Operator: L D DRILLING INC

Location-Downhole: DST #4 3265-3294

Location-Surface: S10/18S/15W

Test Information:

Company: DIAMOND TESTING

Representative: JOHN RIEDL

Supervisor: KIM SHOEMAKER

Test Type: CONVENTIONAL Job Number: D32

Test Unit: 2

Start Date: 2005/02/27 Start Time: 18:01:00

End Date: 2005/02/28 End Time: 01:05:00

Report Date: 2005/02/28 Prepared By: JOHN RIEDL

Qualified By: KIM SHOEMAKER

Remarks:

GAS TO SURFACE 3 MINUTES 1ST FLOW [SEE GAS VOLUME REPORT]

RECOVERY: 100' W+GCOM

300' M+GCOW

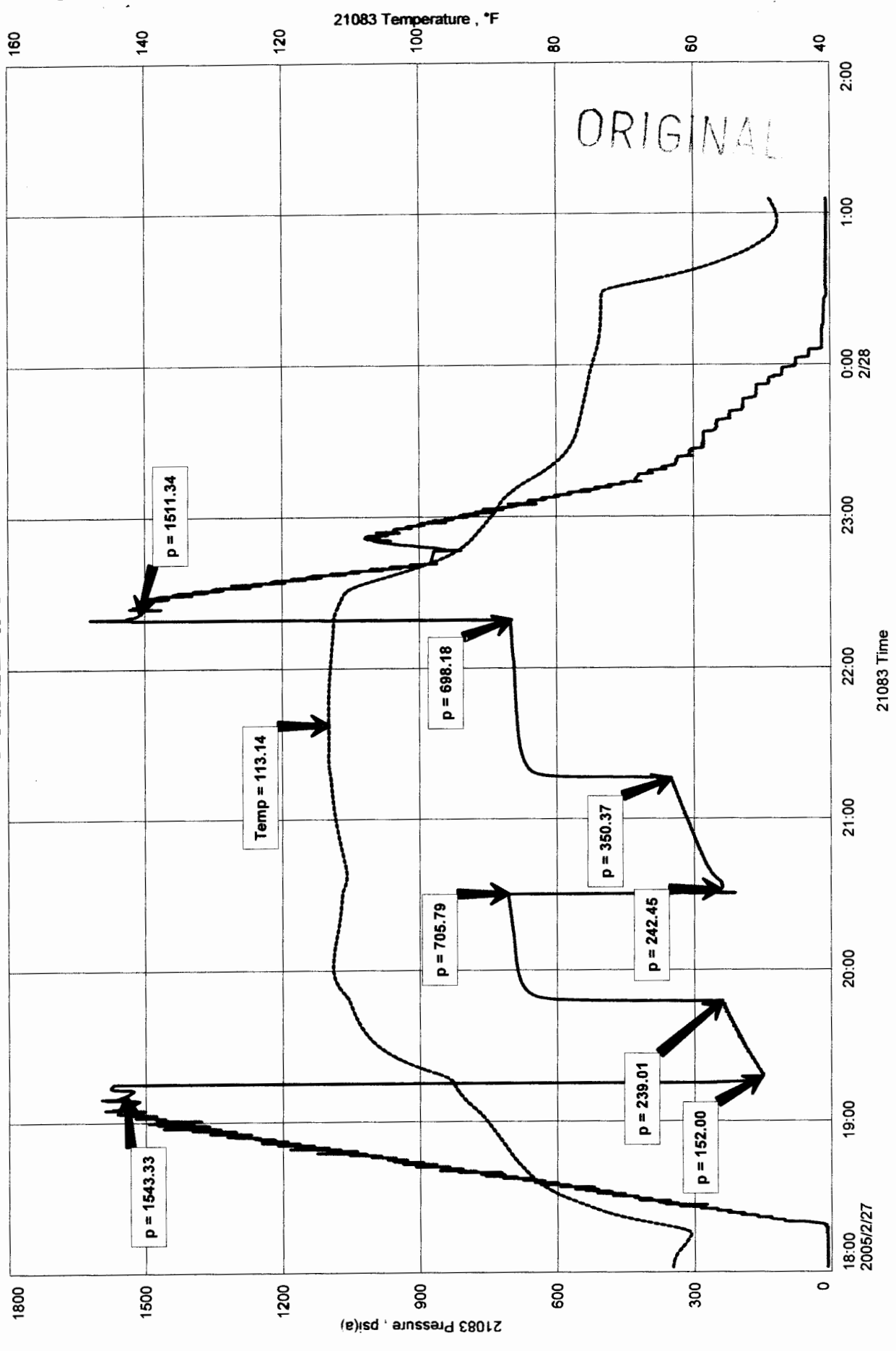
240' GW 85,000 Ppm CHLORIDES

TOTAL FLUID RECOVERY 640'

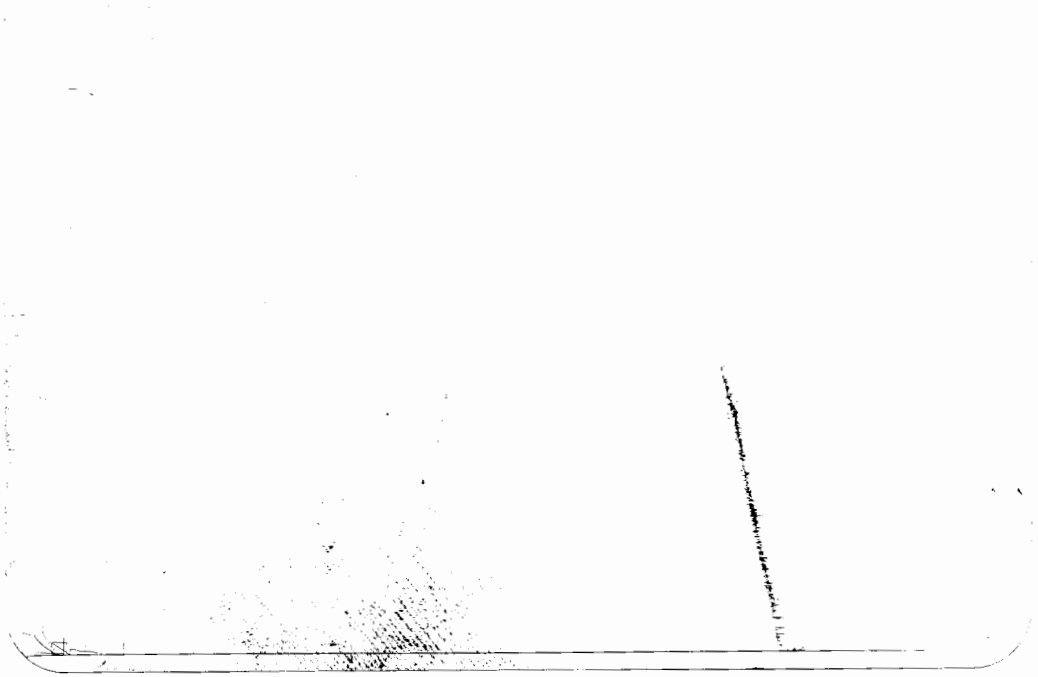
FRIEB #1
Formation: LANSING "A+B"

FRIEB #1

L D DRILLING INC
DST #4 3265-3294



d.p. DSO #4 RSC #1073 00 0000
 FK100 #1



This is an actual photograph of recorder chart.

POINT	PRESSURE Elec.		
	Field Reading	Office Reading	
(A) Initial Hydrostatic Mud	1543	1543	PSI
(B) First Initial Flow Pressure.....	152	152	PSI
(C) First Final Flow Pressure	239	239	PSI
(D) Initial Closed-in Pressure	706	706	PSI
(E) Second Initial Flow Pressure.....	242	242	PSI
(F) Second Final Flow Pressure.....	350	350	PSI
(G) Final Closed-in Pressure.....	698	698	PSI
(H) Final Hydrostatic Mud	1511	1511	PSI



DIAMOND TESTING

ORIGINAL

P.O. Box 157
 HOISINGTON, KANSAS 67544
 (620) 653-7550 • (800) 542-7313
 STC 21083.D33

Company L. D. Drilling, Inc. Lease & Well No. Frieb No. 1

Elevation 1960 KB Formation Lansing "D"- "F" Effective Pay --Ft. Ticket No. J1623

Date 2-28-05 Sec. 10 Twp. 18S Range 15W County Barton State Kansas

Test Approved By Kim B. Shoemaker Diamond Representative John C. Riedl

Formation Test No. 5 Interval Tested from 3,320 ft. to 3,350ft. Total Depth 3,350ft.

Packer Depth 3,315ft. Size 6 3/4 in. Packer Depth -- ft. Size -- in.

Packer Depth 3,320ft. Size 6 3/4 in. Packer Depth -- ft. Size -- in.

Depth of Selective Zone Set ft.

Top Recorder Depth (Inside) 3,323 ft. Recorder Number 21083 Cap. 5,000 psi

Bottom Recorder Depth (Outside) 3,347 ft. Recorder Number 11073 Cap. 4,000 psi

Below Straddle Recorder Depth ft. Recorder Number Cap. psi

Drilling Contractor VAL Energy, Inc. - Rig 3 Drill Collar Length -- ft. I.D. -- in.

Mud Type Chemical Viscosity 50 Weight Pipe Length -- ft. I.D. -- in.

Weight 9.0 Water Loss 10.0 cc. Drill Pipe Length 3,300 ft. I.D. 3 1/2 in.

Chlorides 5,000 P.P.M. Test Tool Length 20 ft. Tool Size 3 1/2 - IF in.

Jars: Make Bowen Serial Number Not Run Anchor Length 30 ft. Size 4 1/2 - FH in.

Did Well Flow? No Reversed Out No Surface Choke Size 1 in. Bottom Choke Size 5/8 in.

Main Hole Size 7 7/8 in. Tool Joint Size 4 1/2 - XH in.

Blow: 1st Open: Good blow slowly building to 7 ins. No blow back during shut-in.
2nd Open: Good blow slowly building to 7 ins. No blow back during shut-in.

Recovered 200 ft. of gas in pipe

Recovered 50 ft. of oil & water cut mud = .710000 bbls. (Grind out: 25%-oil; 30%-water; 45%-mud) Chlorides: 30,000 Ppm

Recovered 50 ft. of TOTAL FLUID = .710000 bbls.

Recovered ft. of

Recovered ft. of

Remarks

Time Set Packer(s) 11:55 ~~P.M.~~ ^{A.M.} Time Started Off Bottom 2:55 ~~P.M.~~ ^{P.M.} Maximum Temperature 107°

Initial Hydrostatic Pressure (A) 1533 P.S.I.

Initial Flow Period Minutes 30 (B) 23 P.S.I. to (C) 38 P.S.I.

Initial Closed In Period Minutes 45 (D) 883 P.S.I.

Final Flow Period Minutes 45 (E) 41 P.S.I. to (F) 43 P.S.I.

Final Closed In Period Minutes 60 (G) 867 P.S.I.

Final Hydrostatic Pressure (H) 1521 P.S.I.



DIAMOND TESTING
P.O. Box 157
HOISINGTON, KANSAS 67544
(620) 653-7550 • (800) 542-7313

Page 2 of 3 Pages

FLUID SAMPLE DATA

Company L. D. Drilling, Inc.

Lease & Well No. Frieb No. 1

Date 2-28-05 Sec. 10 Twp. 18 S Range 15 W

Formation Test No. 5 Interval Tested From 3,320 ft. to 3,350 ft. Total Depth 3,350 ft.

Formation Lansing "D"- "F"

	<u>MUD PIT</u>	<u>RECOVERY</u>
Viscosity	<u>50</u> CP	<u>--</u> CP
Weight	<u>9.0</u>	<u>--</u>
Water Loss	<u>10.0</u> CC	<u>--</u> CC
PH Factor	<u>9.5</u>	<u>7.5</u>

	<u>RESISTIVITY</u>	<u>CHLORIDE CONTENT</u>
Recovery Water	<u>.34 @ 50 °F.</u>	<u>28,000 ppm</u>
Recovery Mud	<u>-- @ -- °F.</u>	<u>-- ppm</u>
Recovery Mud Filtrate	<u>-- @ -- °F.</u>	<u>-- ppm</u>
Mud Pit Sample	<u>-- @ -- °F.</u>	<u>-- ppm</u>
Mud Pit Sample Filtrate	<u>2.40 @ 40 °F.</u>	<u>4,900 ppm</u>

Sample Taken By JOHN C. RIEDL

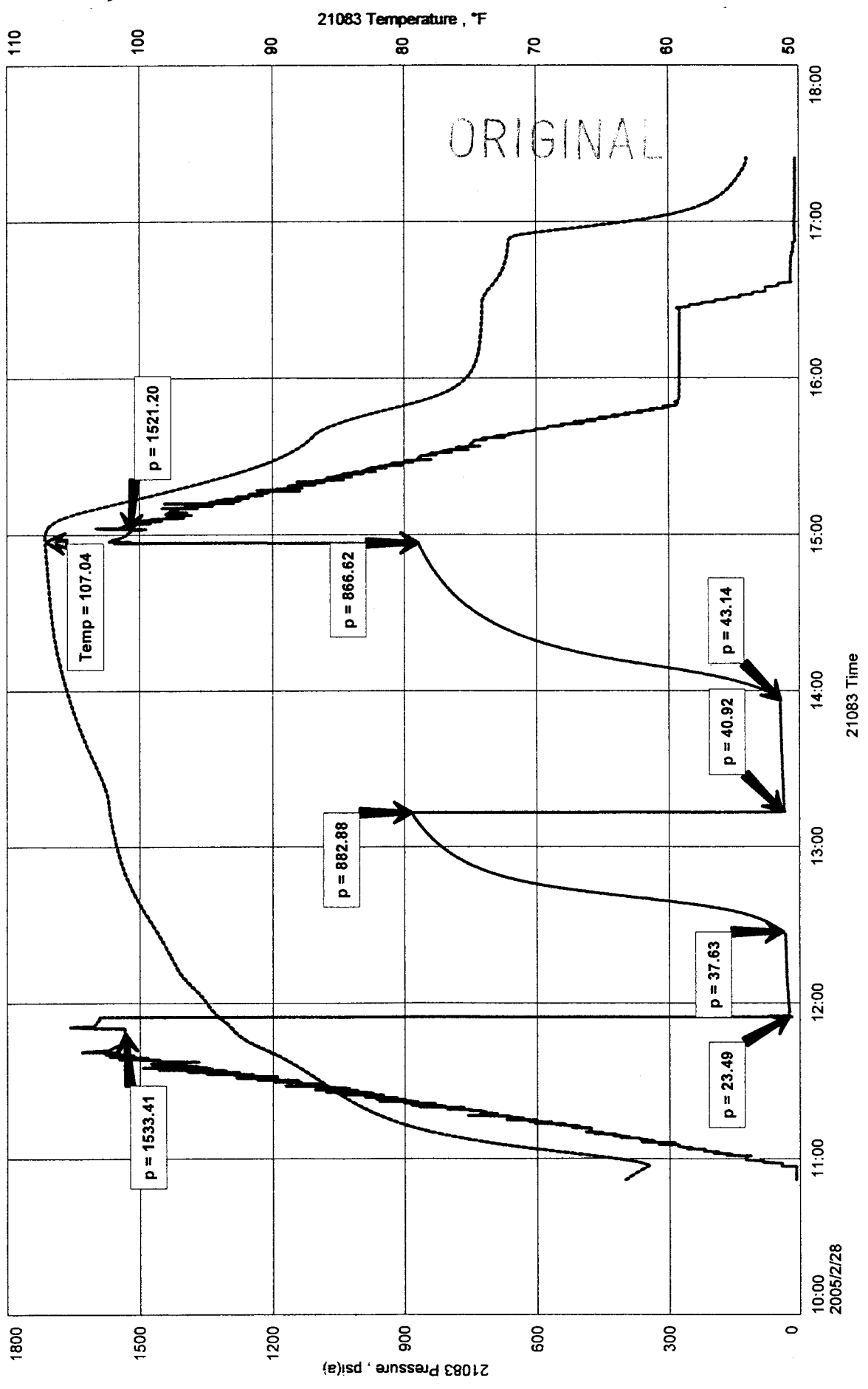
Witness By Kim B. Shoemaker

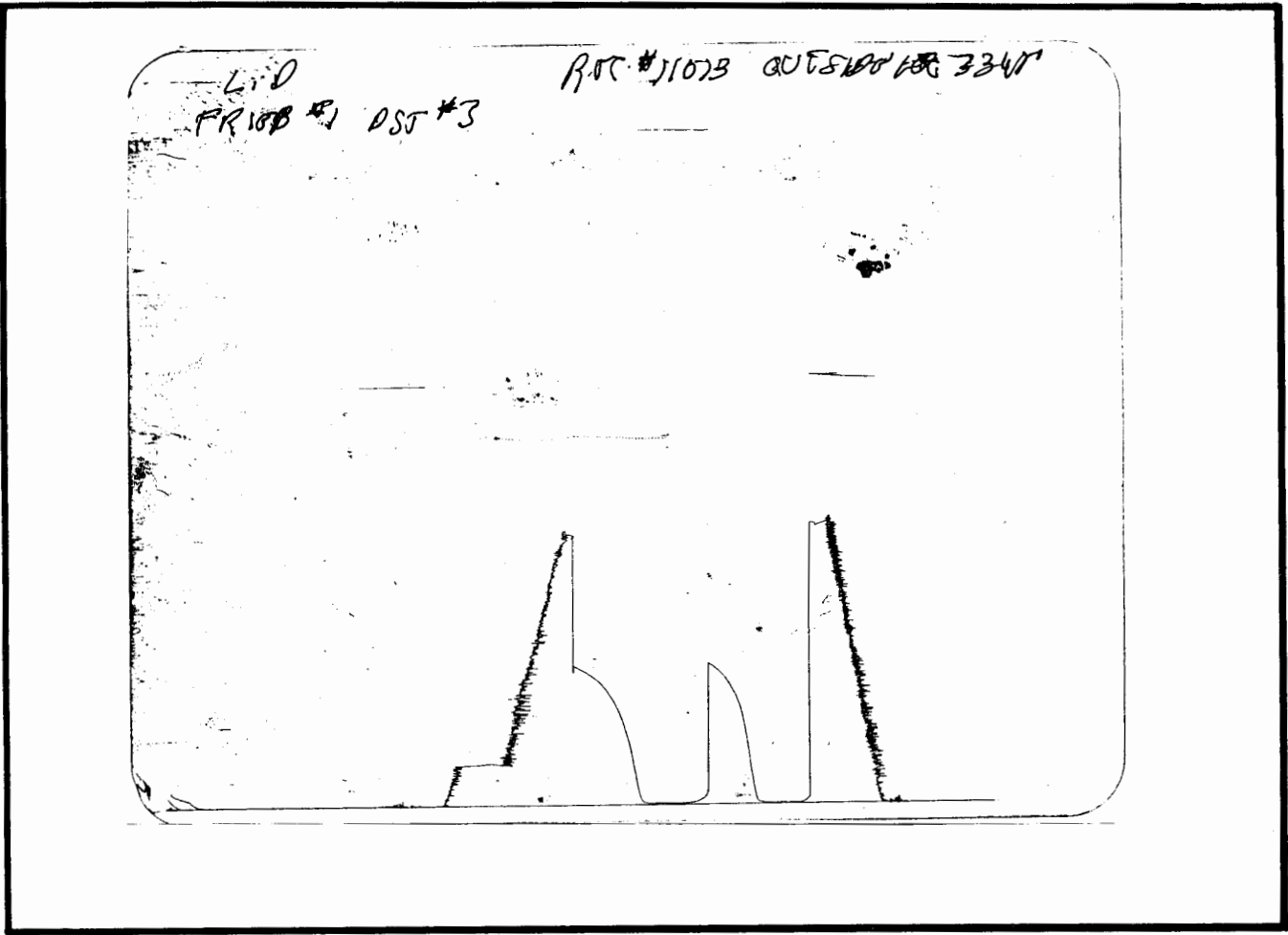
Remarks Pit filtrate triton dish chlorides were 5,000 Ppm.
Recovery water dish chlorides were 30,000 Ppm.

FRIEB #1
Formation: LANSING "D/F"
Job Number: D33

L D DRILLING INC
DST #5 3320-3350
Start Test Date: 2005/02/28
Final Test Date: 2005/02/28

FRIEB #1





This is an actual photograph of recorder chart.

POINT	PRESSURE		
	Field Reading	Elec. Office Reading	
(A) Initial Hydrostatic Mud	1533	1533	PSI
(B) First Initial Flow Pressure.....	23	23	PSI
(C) First Final Flow Pressure	38	38	PSI
(D) Initial Closed-in Pressure	883	883	PSI
(E) Second Initial Flow Pressure	41	41	PSI
(F) Second Final Flow Pressure.....	43	43	PSI
(G) Final Closed-in Pressure.....	867	867	PSI
(H) Final Hydrostatic Mud	1521	1521	PSI



ORIGINAL

DIAMOND TESTING

P.O. Box 157
HOISINGTON, KANSAS 67544
(620) 653-7550 • (800) 542-7313
STC 21083.D34

Company L. D. Drilling, Inc. Lease & Well No. Frieb No. 1
Elevation 1960 KB Formation Lansing "G" Effective Pay -- Ft. Ticket No. J1624
Date 3-1-05 Sec. 10 Twp. 18S Range 15W County Barton State Kansas
Test Approved By Kim B. Shoemaker Diamond Representative John C. Riedl

Formation Test No. 6 Interval Tested from 3,348 ft. to 3,370 ft. Total Depth 3,370 ft.
Packer Depth 3,343 ft. Size 6 3/4 in. Packer Depth -- ft. Size -- in.
Packer Depth 3,348 ft. Size 6 3/4 in. Packer Depth -- ft. Size -- in.
Depth of Selective Zone Set ft.

Top Recorder Depth (Inside) 3,351 ft. Recorder Number 21083 Cap. 5,000 psi
Bottom Recorder Depth (Outside) 3,367 ft. Recorder Number 11073 Cap. 4,000 psi
Below Straddle Recorder Depth ft. Recorder Number Cap. psi

Drilling Contractor VAL Energy, Inc. - Rig 3 Drill Collar Length -- ft. I.D. -- in.
Mud Type Chemical Viscosity 43 Weight Pipe Length -- ft. I.D. -- in.
Weight 9.1 Water Loss 9.0 cc. Drill Pipe Length 3,328 ft. I.D. 3 1/2 in.
Chlorides 6,000 P.P.M. Test Tool Length 20 ft. Tool Size 3 1/2 - IF in.
Jars: Make Bowen Serial Number Not Run Anchor Length 22 ft. Size 4 1/2 - FH in.
Did Well Flow? No Reversed Out No Surface Choke Size 1 in. Bottom Choke Size 5/8 in.
Main Hole Size 7 7/8 in. Tool Joint Size 4 1/2 - XH in.

Blow: 1st Open: Weak, 3/4 in., blow decreasing to a surface blow by end.
2nd Open: Weak blow. Dead in 10 mins.

Recovered 70 ft. of slightly mud cut water = .994000 bbls. (Grind out: 10%-mud; 90%-water) Chlorides: 50,000 Ppm
Recovered ft. of
Recovered ft. of
Recovered ft. of
Recovered ft. of

Remarks

Time Set Packer(s) 3:03 A.M. Time Started Off Bottom 5:03 A.M. Maximum Temperature 108°
Initial Hydrostatic Pressure (A) 1554 P.S.I.
Initial Flow Period Minutes 30 (B) 24 P.S.I. to (C) 46 P.S.I.
Initial Closed In Period Minutes 30 (D) 912 P.S.I.
Final Flow Period Minutes 30 (E) 48 P.S.I. to (F) 79 P.S.I.
Final Closed In Period Minutes 30 (G) 891 P.S.I.
Final Hydrostatic Pressure (H) 1516 P.S.I.



DIAMOND TESTING
 P.O. Box 157
HOISINGTON, KANSAS 67544
 (620) 653-7550 • (800) 542-7313

FLUID SAMPLE DATA

Company L. D. Drilling, Inc.

Lease & Well No. Frieb No. 1

Date 3-1-05 Sec. 10 Twp. 18 S Range 15 W

Formation Test No. 6 Interval Tested From 3,348 ft. to 3,370 ft. Total Depth 3,370 ft.

Formation Lansing "G"

	<u>MUD PIT</u>	<u>RECOVERY</u>
Viscosity	<u>43</u> CP	<u>--</u> CP
Weight	<u>9.1</u>	<u>--</u>
Water Loss	<u>9.0</u> CC	<u>--</u> CC
PH Factor	<u>9.5</u>	<u>--</u>

	<u>RESISTIVITY</u>	<u>CHLORIDE CONTENT</u>
Recovery Water	<u>.21 @ 50 °F.</u>	<u>46,000</u> ppm
Recovery Mud	<u>-- @ -- °F.</u>	<u>--</u> ppm
Recovery Mud Filtrate	<u>-- @ -- °F.</u>	<u>--</u> ppm
Mud Pit Sample	<u>-- @ -- °F.</u>	<u>--</u> ppm
Mud Pit Sample Filtrate	<u>1.90 @ 35 °F.</u>	<u>5,700</u> ppm

Sample Taken By JOHN C. RIEDL

Witness By Kim B. Shoemaker

Remarks Pit filtrate triton dish chlorides were 6,000 Ppm.
Recovery water dish chlorides were 50,000 Ppm.

GENERAL INFORMATION

Client Information:

Company: L D DRILLING INC

Contact: L D DAVIS

Phone: Fax: e-mail:

Site Information:

Contact: KIM SHOEMAKER

Phone: Fax: e-mail:

Well Information:

Name: FRIEB #1

Operator: L D DRILLING INC

Location-Downhole: DST #6 3340-3370

Location-Surface: S10/18S/15W BARTON COUNTY

Test Information:

Company: DIAMOND TESTING

Representative: JOHN RIEDL

Supervisor: KIM SHOEMAKER

Test Type: CONVENTIONAL Job Number: D34

Test Unit: 2

Start Date: 2005/03/01 Start Time: 01:07:00

End Date: 2005/03/01 End Time: 07:00:00

Report Date: 2005/03/01 Prepared By: JOHN RIEDL

Qualified By: KIM SHOEMAKER

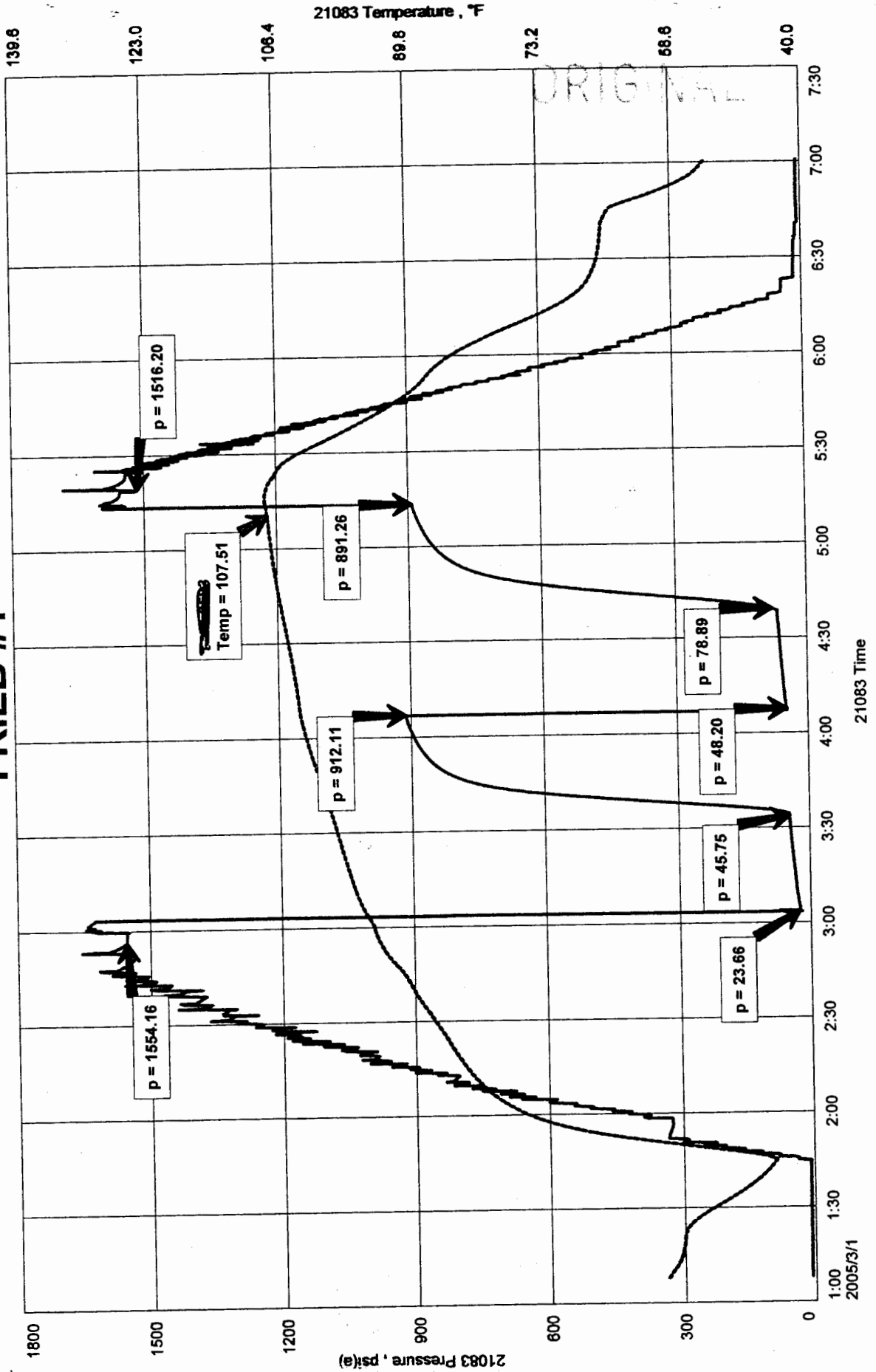
Remarks:

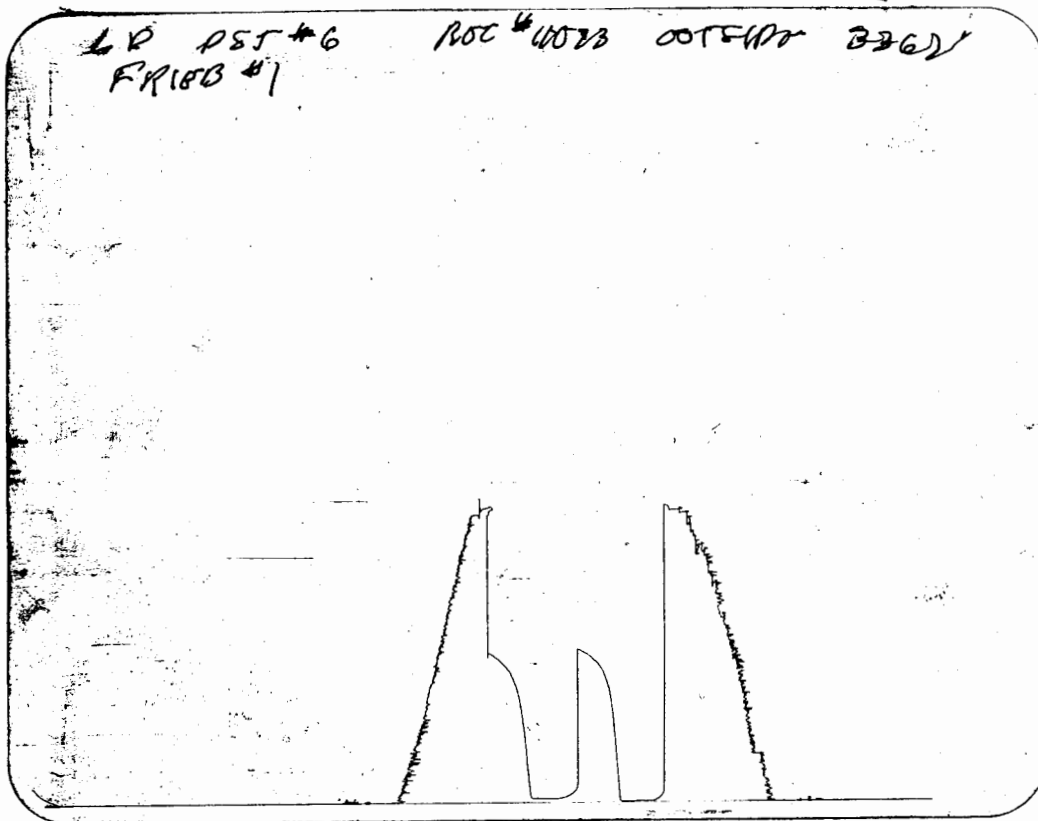
RECOVERY: 70' SLMCW [10%MUD 90%WATER 50,000Ppm CHLORIDES]

FRIEB #1
 Formation: LANSING "G"
 Job Number: D34

LD DRILLING INC
 DST #6 3340-3370
 Start Test Date: 2005/03/01
 Final Test Date: 2005/03/01

FRIEB #1





This is an actual photograph of recorder chart.

POINT	PRESSURE		Elec. Office Reading	PSI
	Field Reading			
(A) Initial Hydrostatic Mud	1554		1554	PSI
(B) First Initial Flow Pressure.....	24		24	PSI
(C) First Final Flow Pressure	46		46	PSI
(D) Initial Closed-in Pressure	912		912	PSI
(E) Second Initial Flow Pressure	48		48	PSI
(F) Second Final Flow Pressure.....	79		79	PSI
(G) Final Closed-in Pressure.....	891		891	PSI
(H) Final Hydrostatic Mud	1516		1516	PSI



DIAMOND TESTING

ORIGINAL

P.O. Box 157
HOISINGTON, KANSAS 67544
(620) 653-7550 • (800) 542-7313
STC 21083.D35

Page 1 of 3 Pages

Company L. D. Drilling, Inc. Lease & Well No. Frieb No. 1

Elevation 1960 KB Formation Lansing/Kansas City "H" & "I" Effective Pay -- Ft. Ticket No. J1625

Date 3-1-05 Sec. 10 Twp. 18S Range 15W County Barton State Kansas

Test Approved By Kim B. Shoemaker Diamond Representative John C. Riedl

Formation Test No. 7 Interval Tested from 3,397 ft. to 3,427 ft. Total Depth 3,427 ft.

Packer Depth 3,392 ft. Size 6 3/4 in. Packer Depth -- ft. Size -- in.

Packer Depth 3,397 ft. Size 6 3/4 in. Packer Depth -- ft. Size -- in.

Depth of Selective Zone Set ft.

Top Recorder Depth (Inside) 3,400 ft. Recorder Number 21083 Cap. 5,000 psi

Bottom Recorder Depth (Outside) 3,424 ft. Recorder Number 11073 Cap. 4,000 psi

Below Straddle Recorder Depth ft. Recorder Number Cap. psi

Drilling Contractor VAL Energy, Inc. - Rig 3 Drill Collar Length -- ft. I.D. -- in.

Mud Type Chemical Viscosity 42 Weight Pipe Length -- ft. I.D. -- in.

Weight 9.0 Water Loss 16.0 cc. Drill Pipe Length 3,377 ft. I.D. 3 1/2 in.

Chlorides 6,000 P.P.M. Test Tool Length 20 ft. Tool Size 3 1/2 - IF in.

Jars: Make Bowen Serial Number Not Run Anchor Length 30 ft. Size 4 1/2 - FH in.

Did Well Flow? No Reversed Out No Surface Choke Size 1 in. Bottom Choke Size 5/8 in.

Main Hole Size 7 7/8 in. Tool Joint Size 4 1/2 - XH in.

1st Open: Strong blow. Off bottom of bucket in 30 secs. Gas to surface during shut-in. Strong blow back during shut-in.

2nd Open: Strong blow. Gas to surface throughout. Guaged 2,000 CF/D throughout. Strong blow back during shut-in.

Recovered 750 ft. of gassy oil = 10.650000 bbls. (Grind out: 15%-gas; 85%-oil) Gravity: 39 @ 60°

Recovered ft. of

Recovered ft. of

Recovered ft. of

Recovered ft. of

Remarks Gas burned & sample taken.

Time Set Packer(s) 5:00 ~~AM~~ P.M. Time Started Off Bottom 8:00 ~~AM~~ P.M. Maximum Temperature 117°

Initial Hydrostatic Pressure (A) 1603 P.S.I.

Initial Flow Period Minutes 30 (B) 56 P.S.I. to (C) 176 P.S.I.

Initial Closed In Period Minutes 45 (D) 670 P.S.I.

Final Flow Period Minutes 45 (E) 186 P.S.I. to (F) 306 P.S.I.

Final Closed In Period Minutes 60 (G) 644 P.S.I.

Final Hydrostatic Pressure (H) 1595 P.S.I.



DIAMOND TESTING
P.O. Box 157
HOISINGTON, KANSAS 67544
(620) 653-7550 • (800) 542-7313

Page 2 of 3 Pages

FLUID SAMPLE DATA

Company L. D. Drilling, Inc.

Lease & Well No. Frieb No. 1

Date 3-1-05 Sec. 10 Twp. 18 S Range 15 W

Formation Test No. 7 Interval Tested From 3,397 ft. to 3,427 ft. Total Depth 3,427 ft.

Formation Lansing/Kansas City "H" & "I"

	<u>MUD PIT</u>	<u>RECOVERY</u>
Viscosity	<u>42</u> CP	<u>--</u> CP
Weight	<u>9.0</u>	<u>--</u>
Water Loss	<u>16.0</u> CC	<u>--</u> CC
PH Factor	<u>9.5</u>	<u>--</u>

	<u>RESISTIVITY</u>	<u>CHLORIDE CONTENT</u>
Recovery Water	<u>--</u> @ <u>--</u> °F.	<u>--</u> ppm
Recovery Mud	<u>--</u> @ <u>--</u> °F.	<u>--</u> ppm
Recovery Mud Filtrate	<u>--</u> @ <u>--</u> °F.	<u>--</u> ppm
Mud Pit Sample	<u>--</u> @ <u>--</u> °F.	<u>--</u> ppm
Mud Pit Sample Filtrate	<u>1.50</u> @ <u>45</u> °F.	<u>6,000</u> ppm

Sample Taken By JOHN C. RIEDL

Witness By Kim B. Shoemaker

Remarks Pit filtrate triton dish chlorides were 6,000 Ppm.

GENERAL INFORMATION

Client Information:

Company: L D DRILLING INC

Contact: L D DAVIS

Phone: Fax: e-mail:

Site Information:

Contact: KIM SHOEMAKER

Phone: Fax: e-mail:

Well Information:

Name: FRIEB #1

Operator: L D DRILLING INC

Location-Downhole: DST #7 3397-3437

Location-Surface: S10/18S/15W BARTON COUNTY

Test Information:

Company: DIAMOND TESTING

Representative: JOHN RIEDL

Supervisor: KIM SHOEMAKER

Test Type: CONVENTIONAL Job Number: D35

Test Unit: 2

Start Date: 2005/03/01 Start Time: 15:45:00

End Date: 2005/03/01 End Time: ~~12~~ 45:00

Report Date: 2005/03/01 Prepared By: JOHN RIEDL

Qualified By: KIM SHOEMAKER

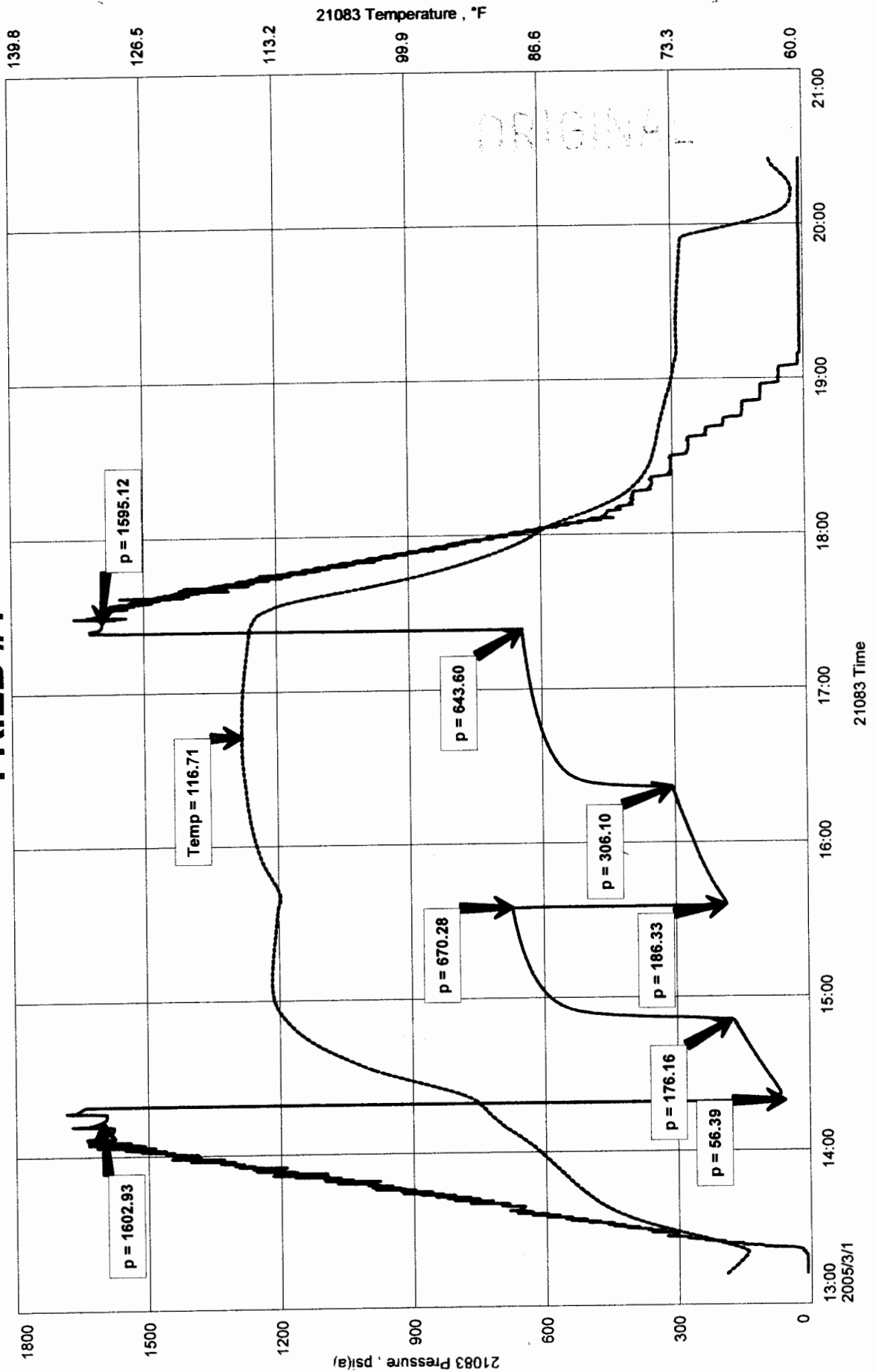
Remarks:

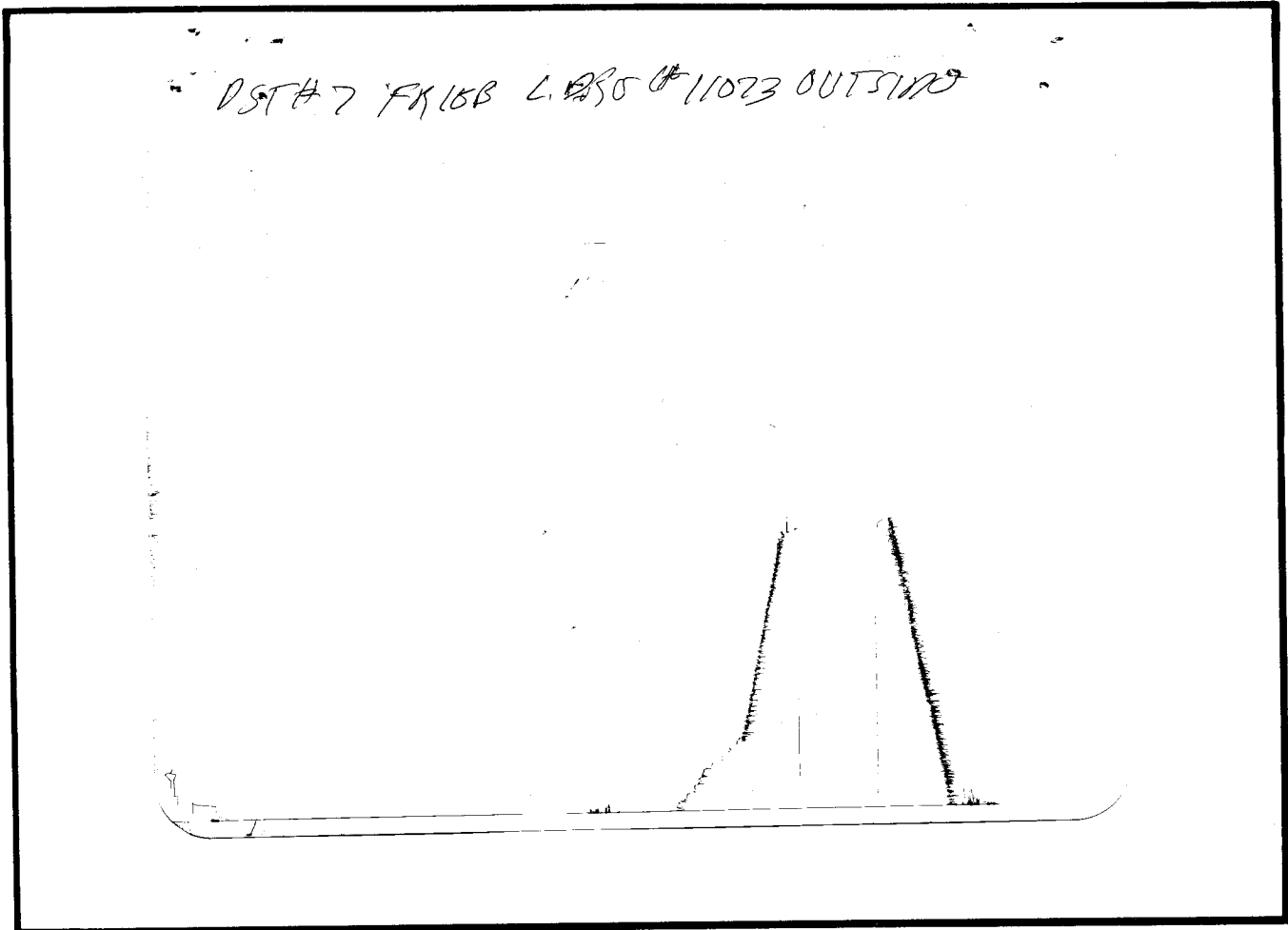
RECOVERY: 750' GASSY OIL WITH A 39 GRAVITY
GTS 1ST SHUT-IN GUAGED 2,000 2ND FLOW

FRIEB #1
Formation: LKC "H+I"
Job Number: D35

LD DRILLING INC
DST #7 3397-3437
Start Test Date: 2005/03/01
Final Test Date: 2005/03/01

FRIEB #1





This is an actual photograph of recorder chart.

POINT	PRESSURE		PSI
	Field Reading	Elec. Office Reading	
(A) Initial Hydrostatic Mud	1603	1603	PSI
(B) First Initial Flow Pressure.....	56	56	PSI
(C) First Final Flow Pressure	176	176	PSI
(D) Initial Closed-in Pressure	670	670	PSI
(E) Second Initial Flow Pressure.....	186	186	PSI
(F) Second Final Flow Pressure.....	306	306	PSI
(G) Final Closed-in Pressure.....	644	644	PSI
(H) Final Hydrostatic Mud.....	1595	1595	PSI



ORIGINAL

DIAMOND TESTING

P.O. Box 157
HOISINGTON, KANSAS 67544
(620) 653-7550 • (800) 542-7313
STC 21083.D36

Company L. D. Drilling, Inc. Lease & Well No. Frieb No. 1
 Elevation 1960 KB Formation Lansing/Kansas City "J"- "L" Effective Pay -- Ft. Ticket No. J1626
 Date 3-2-05 Sec. 10 Twp. 18S Range 15W County Barton State Kansas
 Test Approved By Kim B. Shoemaker Diamond Representative John C. Riedl

Formation Test No. 8 Interval Tested from 3,429 ft. to 3,470 ft. Total Depth 3,470 ft.
 Packer Depth 3,424 ft. Size 6 3/4 in. Packer Depth -- ft. Size -- in.
 Packer Depth 3,429 ft. Size 6 3/4 in. Packer Depth -- ft. Size -- in.
 Depth of Selective Zone Set ft.

Top Recorder Depth (Inside) 3,432 ft. Recorder Number 21083 Cap. 5,000 psi
 Bottom Recorder Depth (Outside) 3,467 ft. Recorder Number 11073 Cap. 4,000 psi
 Below Straddle Recorder Depth ft. Recorder Number Cap. psi

Drilling Contractor VAL Energy, Inc. - Rig 3 Drill Collar Length -- ft. I.D. in.
 Mud Type Chemical Viscosity 40 Weight Pipe Length -- ft. I.D. in.
 Weight 9.0 Water Loss 12.0 cc. Drill Pipe Length 3,409 ft. I.D. 3 1/2 in.
 Chlorides 6,000 P.P.M. Test Tool Length 20 ft. Tool Size 3 1/2 - IF in.
 Jars: Make Bowen Serial Number Not Run Anchor Length 41 ft. Size 4 1/2 - FH in.
 Did Well Flow? No Reversed Out No Surface Choke Size 1 in. Bottom Choke Size 5/8 in.
 Main Hole Size 7 7/8 in. Tool Joint Size 4 1/2 - XH in.

Blow: 1st Open: Strong blow. Off bottom of bucket in 2 mins. Fair blow back during shut-in.
2nd Open: Strong blow. Off bottom of bucket in 5 mins. Fair blow back during shut-in.

Recovered 500 ft. of gas in pipe
 Recovered 50 ft. of clean gassy oil = .710000 bbls. (Grind out: 10%-gas; 90%-oil) Gravity: 37 @ 60°
 Recovered 60 ft. of slightly oily & mud cut gassy water = .852000 bbls. (Grind out: 5%-oil; 10%-mud; 15%-gas; 70%-water)
 Recovered 1,000 ft. of gassy water = 14.200000 bbls. (Grind out: 15%-gas; 85%-water) Chlorides: 52,000 Ppm
 Recovered 1,110 ft. of TOTAL FLUID = 15.762000 bbls.

Remarks

Time Set Packer(s) 9:55 ~~P.M.~~ ^{A.M.} Time Started Off Bottom 12:55 ~~P.M.~~ ^{XXM.} Maximum Temperature 115°
 Initial Hydrostatic Pressure (A) 1603 P.S.I.
 Initial Flow Period Minutes 30 (B) 71 P.S.I. to (C) 326 P.S.I.
 Initial Closed In Period Minutes 45 (D) 713 P.S.I.
 Final Flow Period Minutes 45 (E) 335 P.S.I. to (F) 510 P.S.I.
 Final Closed In Period Minutes 60 (G) 661 P.S.I.
 Final Hydrostatic Pressure (H) 1586 P.S.I.



DIAMOND TESTING
 P.O. Box 157
HOISINGTON, KANSAS 67544
 (620) 653-7550 • (800) 542-7313

FLUID SAMPLE DATA

Company L. D. Drilling, Inc.

Lease & Well No. Frieb No. 1

Date 3-2-05 Sec. 10 Twp. 18 S Range 15 W

Formation Test No. 8 Interval Tested From 3,429 ft. to 3,470 ft. Total Depth 3,470 ft.

Formation Lansing/Kansas City "J"- "L"

	<u>MUD PIT</u>	<u>RECOVERY</u>
Viscosity	<u>40</u> CP	<u>--</u> CP
Weight	<u>9.0</u>	<u>--</u>
Water Loss	<u>12.0</u> CC	<u>--</u> CC
PH Factor	<u>9.5</u>	<u>8.0</u>

	<u>RESISTIVITY</u>	<u>CHLORIDE CONTENT</u>
Recovery Water	<u>.20</u> @ <u>50</u> °F.	<u>50,000</u> ppm
Recovery Mud	<u>--</u> @ <u>--</u> °F.	<u>--</u> ppm
Recovery Mud Filtrate	<u>--</u> @ <u>--</u> °F.	<u>--</u> ppm
Mud Pit Sample	<u>--</u> @ <u>--</u> °F.	<u>--</u> ppm
Mud Pit Sample Filtrate	<u>1.50</u> @ <u>45</u> °F.	<u>6,100</u> ppm

Sample Taken By JOHN C. RIEDL

Witness By Kim B. Shoemaker

Remarks Pit filtrate triton dish chlorides were 6,000 Ppm.
Recovery water dish chlorides were 52,000 Ppm.

GENERAL INFORMATION

Client Information:

Company: L D DRILLING INC

Contact: L D DAVIS

Phone: Fax: e-mail:

Site Information:

Contact: KIM SHOEMAKER

Phone: Fax: e-mail:

Well Information:

Name: FRIEB #

Operator: L D DRILLING INC

Location-Downhole: DST #8 3429-3470

Location-Surface: S10/18S/15W BARTON COUNTY

Test Information:

Company: DIAMOND TESTING36

Representative: JOHN RIEDL

Supervisor: KIM SHOEMAKER

Test Type: CONVENTIONAL Job Number: D36

Test Unit: 2

Start Date: 2005/03/02 Start Time: 08:50:00

End Date: 2005/03/02 End Time: 03:45:00

Report Date: 2005/03/02 Prepared By: JOHN RIEDL

Qualified By: KIM MSHOEMAKER

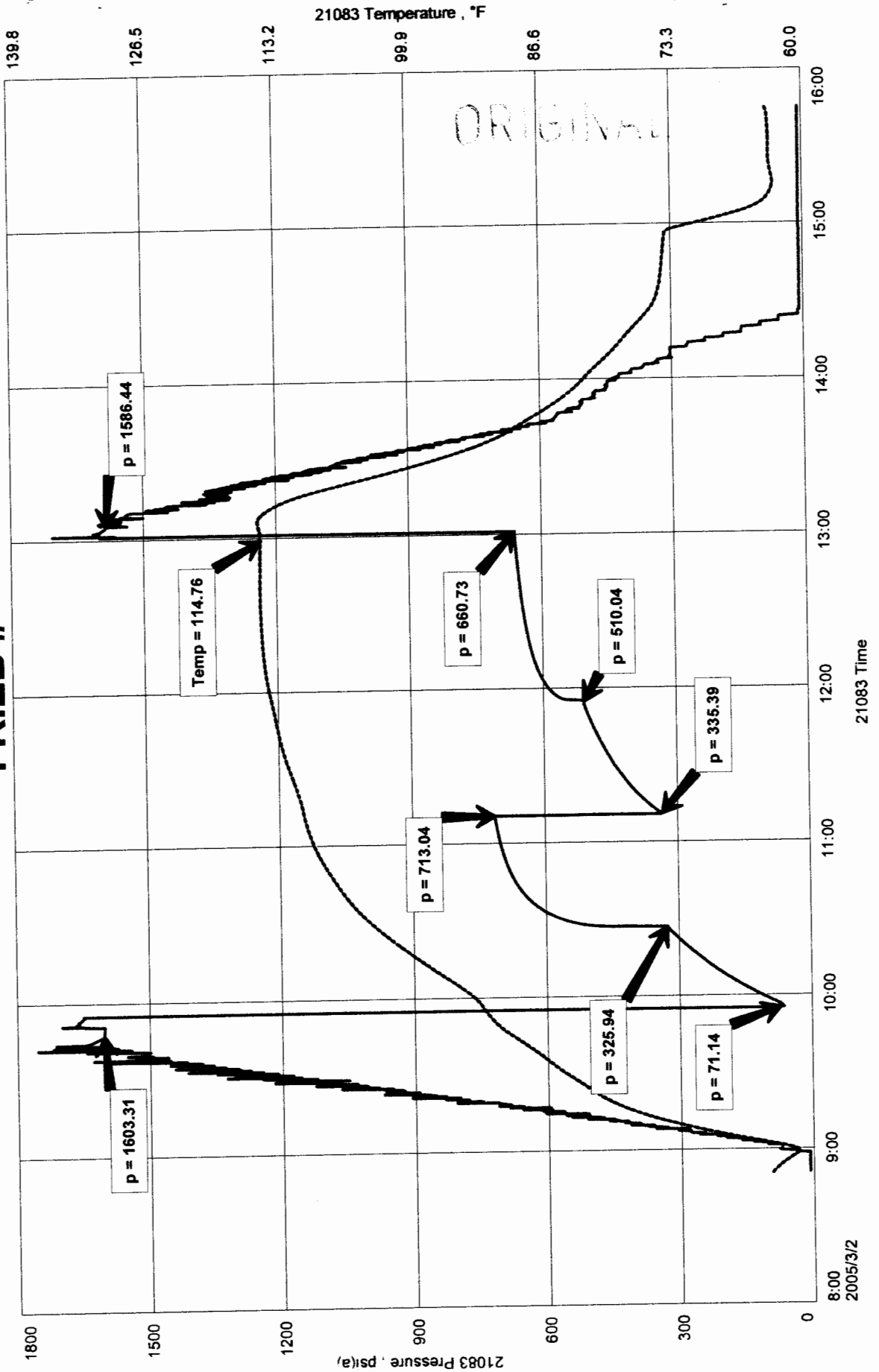
Remarks:

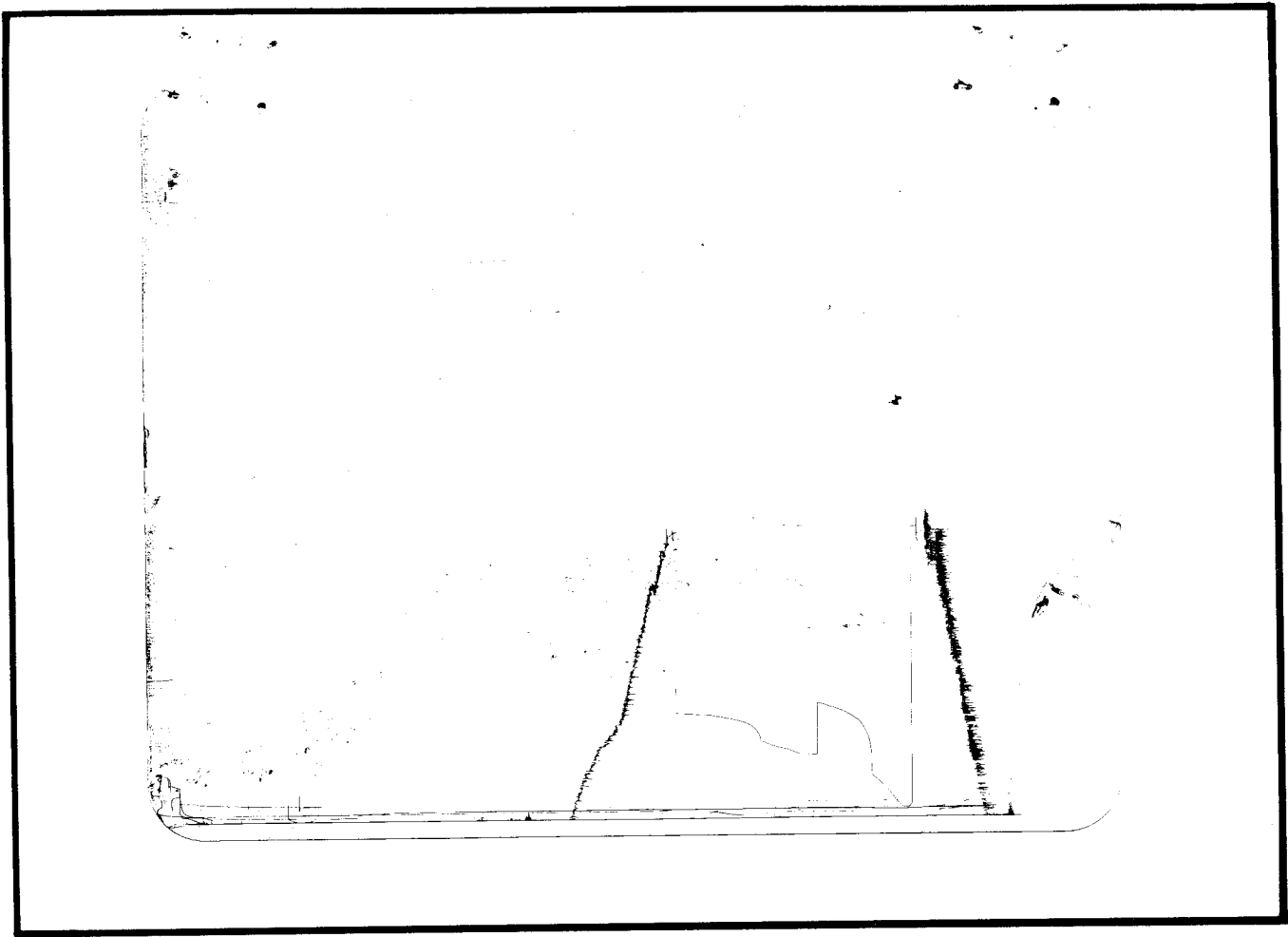
RECOVERY 500' GIP
50' CGO 37 GRAVITY
60'SLO+MCGW [5%OIL 10%MUD 15%GAS 70%WATER]
1000' GW CHLORIDES 52,000Ppm

FRIEB #!
Formation: LKC :J/L
Job Number: D36

L D DRILLING INC
DST #8 3429-3470
Start Test Date: 2005/03/02
Final Test Date: 2005/03/02

FRIEB





This is an actual photograph of recorder chart.

POINT	PRESSURE		PSI
	Field Reading	Elec. Office Reading	
(A) Initial Hydrostatic Mud	1603	1603	PSI
(B) First Initial Flow Pressure.....	71	71	PSI
(C) First Final Flow Pressure	326	326	PSI
(D) Initial Closed-in Pressure	713	713	PSI
(E) Second Initial Flow Pressure	335	335	PSI
(F) Second Final Flow Pressure.....	510	510	PSI
(G) Final Closed-in Pressure.....	661	661	PSI
(H) Final Hydrostatic Mud	1586	1586	PSI



DIAMOND TESTING

P.O. Box 157
HOISINGTON, KANSAS 67544
(620) 653-7550 • (800) 542-7313
STC 21083.D37

ORIGINAL

Company L. D. Drilling, Inc. Lease & Well No. Frieb No. 1
Elevation 1960 KB Formation Lansing/Kansas City "J" Effective Pay -- Ft. Ticket No. J1627
Date 3-2-05 Sec. 10 Twp. 18S Range 15W County Barton State Kansas
Test Approved By Kim B. Shoemaker Diamond Representative John C. Riedl

Formation Test No. 9 Interval Tested from 3,425 ft. to 3,437 ft. Total Depth 3,470 ft.
Packer Depth 3,420 ft. Size 6 3/4 in. Packer Depth 3,437 ft. Size 6 3/4 in.
Packer Depth 3,425 ft. Size 6 3/4 in. Packer Depth -- ft. Size -- in.
Depth of Selective Zone Set 3,437 ft.

Top Recorder Depth (Inside) 3,412 ft. Recorder Number 21083 Cap. 5,000 psi
Bottom Recorder Depth (Outside) 3,434 ft. Recorder Number 11017 Cap. 3,900 psi
Below Straddle Recorder Depth 3,467 ft. Recorder Number 11073 Cap. 4,000 psi

Drilling Contractor VAL Energy, Inc. - Rig 3 Drill Collar Length -- ft. I.D. -- in.
Mud Type Chemical Viscosity 40 Weight Pipe Length -- ft. I.D. -- in.
Weight 9.0 Water Loss 12.0 cc. Drill Pipe Length 3,434 ft. I.D. 3 1/2 in.
Chlorides 7,000 P.P.M. Test Tool Length 24 ft. Tool Size 3 1/2 - IF in.
Jars: Make Bowen Serial Number Not Run Anchor Length 12 ft. Size 4 1/2 - FH in.
Did Well Flow? No Reversed Out No Surface Choke Size 1 in. Bottom Choke Size 5/8 in.
Main Hole Size 7 7/8 in. Tool Joint Size 4 1/2 - XH in.

Blow: 1st Open: Strong blow. Off bottom of bucket in 6 mins. 3 in. blow back during shut-in.
2nd Open: Strong blow. Off bottom of bucket in 10 mins. 1/2 in. blow back during shut-in.

Recovered 200 ft. of gas in pipe
Recovered 20 ft. of clean gassy oil = .284000 bbls. (Grind out: 10%-gas; 90%-oil) Gravity: 37 @ 60°
Recovered 80 ft. of very slightly oil cut gassy water = 1.136000 bbls. (Grind out: 2%-oil; 10%-gas; 88%-water)
Recovered 600 ft. of water = 8.520000 bbls. (Chlorides: 50,000 Ppm)
Recovered 700 ft. of TOTAL FLUID = 9.940000 bbls.

Remarks Outside recorder clock stopped so can't confirm bottom packer held.

Time Set Packer(s) 7:30 ^{XXX} P.M. Time Started Off Bottom 10:30 ^{XXX} P.M. Maximum Temperature 119°
Initial Hydrostatic Pressure (A) 1603 P.S.I.
Initial Flow Period Minutes 30 (B) 32 P.S.I. to (C) 192 P.S.I.
Initial Closed In Period Minutes 45 (D) 627 P.S.I.
Final Flow Period Minutes 45 (E) 196 P.S.I. to (F) 357 P.S.I.
Final Closed In Period Minutes 60 (G) 577 P.S.I.
Final Hydrostatic Pressure (H) 1593 P.S.I.



DIAMOND TESTING
P.O. Box 157
HOISINGTON, KANSAS 67544
(620) 653-7550 • (800) 542-7313

Page 2 of 3 Pages

FLUID SAMPLE DATA

Company L. D. Drilling, Inc.

Lease & Well No. Frieb No. 1

Date 3-2-05 Sec. 10 Twp. 18 S Range 15 W

Formation Test No. 9 Interval Tested From 3,425 ft. to 3,437 ft. Total Depth 3,470 ft.

Formation Lansing/Kansas City "J"

	<u>MUD PIT</u>	<u>RECOVERY</u>
Viscosity	<u>40</u> CP	<u>--</u> CP
Weight	<u>9.0</u>	<u>--</u>
Water Loss	<u>12.0</u> CC	<u>--</u> CC
PH Factor	<u>10.0</u>	<u>8.0</u>

	<u>RESISTIVITY</u>	<u>CHLORIDE CONTENT</u>
Recovery Water	<u>.22 @ 45 °F.</u>	<u>48,000</u> ppm
Recovery Mud	<u>-- @ -- °F.</u>	<u>--</u> ppm
Recovery Mud Filtrate	<u>-- @ -- °F.</u>	<u>--</u> ppm
Mud Pit Sample	<u>-- @ -- °F.</u>	<u>--</u> ppm
Mud Pit Sample Filtrate	<u>1.40 @ 55 °F.</u>	<u>6,200</u> ppm

Sample Taken By JOHN C. RIEDL

Witness By Kim B. Shoemaker

Remarks Pit filtrate triton dish chlorides were 7,000 Ppm.
Recovery water dish chlorides were 50,000 Ppm.

GENERAL INFORMATION

Client Information:

Company: L D DRILLING INC

Contact: L D DAVIS

Phone: Fax: e-mail:

Site Information:

Contact: KIM SHOEMAKER

Phone: Fax: e-mail:

Well Information:

Name: FRIEB #1

Operator: L D DRILLING INC

Location-Downhole: DST #9 3425-3437

Location-Surface:

Test Information:

Company: DIAMOND TESTING

Representative: JOHN RIEDL

Supervisor: KIM SHOEMAKER

Test Type: ~~CONVENTIONAL~~ STRADDLE Job Number: D37

Test Unit: 2

Start Date: 2005/03/02 Start Time: 17:50:00

End Date: 2005/03/03 End Time: 01:46:00

Report Date: 2005/03/03 Prepared By: JOHN RIEDL

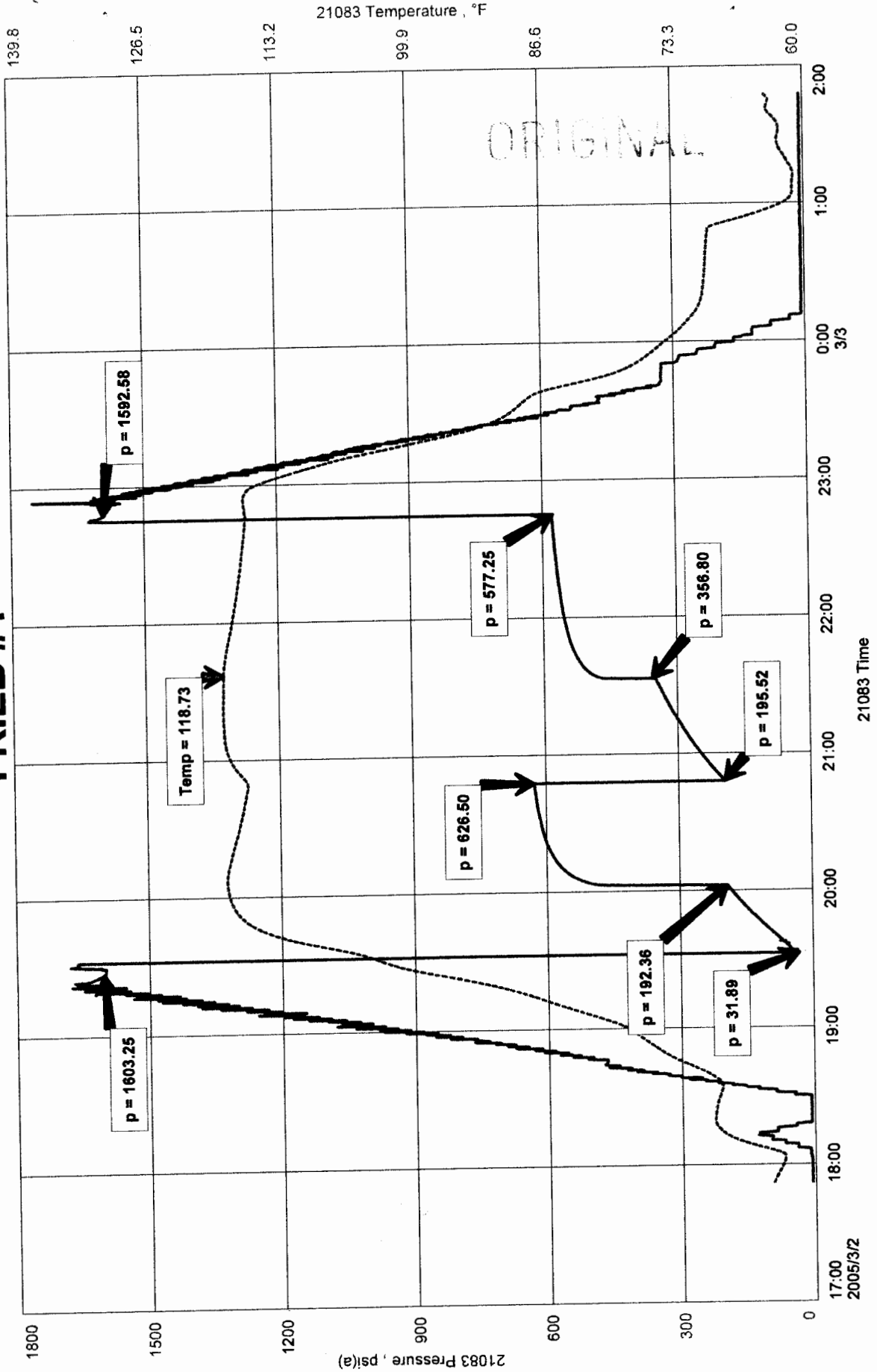
Qualified By: KIM SHOEMAKER

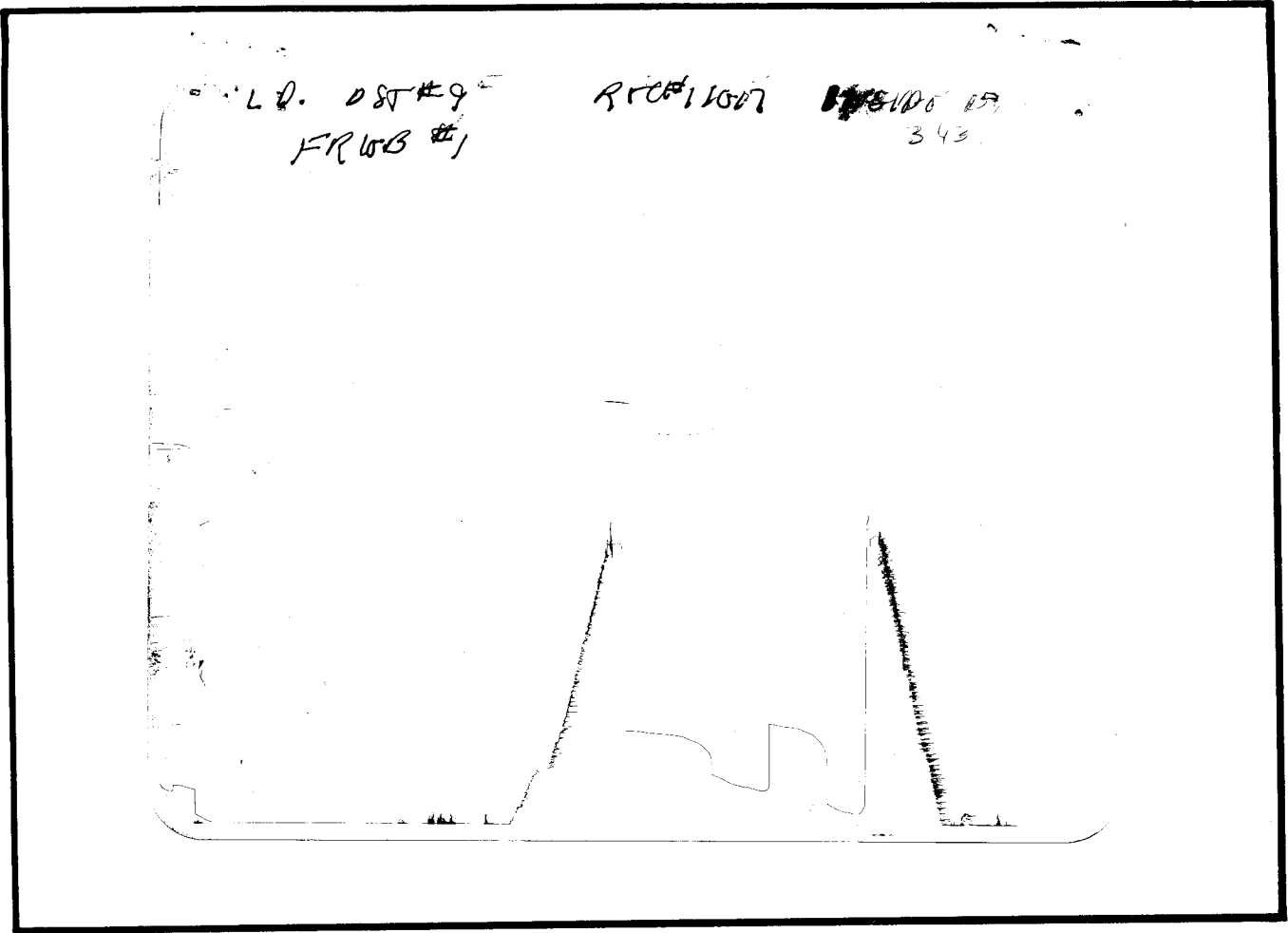
Remarks:

RECOVERY: 200' GIP
20' CGO 10%GAS 90%OIL
80VSLOGW [2%OIL 10%GAS 88%WATER]
600' WATER CHLORIDES 50,000 Ppm

L D DRILLING INC
DST #9 3425-3437
Start Test Date: 2005/03/02
Final Test Date: 2005/03/03

FRIEB #1





This is an actual photograph of recorder chart.

POINT	PRESSURE		E1ec. Office Reading	PSI
	Field Reading			
(A) Initial Hydrostatic Mud	1603		1603	PSI
(B) First Initial Flow Pressure.....	32		32	PSI
(C) First Final Flow Pressure	192		192	PSI
(D) Initial Closed-in Pressure	627		627	PSI
(E) Second Initial Flow Pressure	196		196	PSI
(F) Second Final Flow Pressure.....	357		357	PSI
(G) Final Closed-in Pressure.....	577		577	PSI
(H) Final Hydrostatic Mud	1593		1593	PSI

COMPANY
LEASE AND WELL NO.



DIAMOND TESTING

P.O. Box 157
HOISINGTON, KANSAS 67544
(620) 653-7550 • (800) 542-7313
STC 21083.D38

ORIGINAL

Company L. D. Drilling, Inc. Lease & Well No. Frieb No. 1
 Elevation 1960 KB Formation Arbuckle Effective Pay -- Ft. Ticket No. J1628
 Date 3-3-05 Sec. 10 Twp. 18S Range 15W County Barton State Kansas
 Test Approved By Kim B. Shoemaker Diamond Representative John C. Riedl

Formation Test No. 10 Interval Tested from 3,518 ft. to 3,528 ft. Total Depth 3,528 ft.
 Packer Depth 3,513 ft. Size 6 3/4 in. Packer Depth -- ft. Size -- in.
 Packer Depth 3,518 ft. Size 6 3/4 in. Packer Depth -- ft. Size -- in.

Depth of Selective Zone Set ft.
 Top Recorder Depth (Inside) 3,505 ft. Recorder Number 21083 Cap. 5,000 psi
 Bottom Recorder Depth (Outside) 3,525 ft. Recorder Number 11073 Cap. 4,000 psi
 Below Straddle Recorder Depth ft. Recorder Number Cap. psi

Drilling Contractor VAL Energy, Inc. - Rig 3 Drill Collar Length -- ft. I.D. -- in.
 Mud Type Chemical Viscosity 60 Weight Pipe Length -- ft. I.D. -- in.
 Weight 9.0 Water Loss 12.0 cc. Drill Pipe Length 3,494 ft. I.D. 3 1/2 in.
 Chlorides 7,000 P.P.M. Test Tool Length 24 ft. Tool Size 3 1/2 - IF in.
 Jars: Make Bowen Serial Number Not Run Anchor Length 10 ft. Size 4 1/2 - FH in.
 Did Well Flow? No Reversed Out No Surface Choke Size 1 in. Bottom Choke Size 5/8 in.
 Main Hole Size 7 7/8 in. Tool Joint Size 4 1/2 - XH in.

Blow: 1st Open: Weak blow. Dead in 1 min. Flushed tool & received a weak surge.
2nd Open: N/A

Recovered 3 ft. of drilling mud = .042600 bbls.
 Recovered ft. of
 Recovered ft. of
 Recovered ft. of
 Recovered ft. of

Remarks

Time Set Packer(s) 1:15 ^{XXX} P.M. Time Started Off Bottom 2:15 ^{XXV} P.M. Maximum Temperature 99 °
 Initial Hydrostatic Pressure (A) 1711 P.S.I.
 Initial Flow Period Minutes 30 (B) 16 P.S.I. to (C) 17 P.S.I.
 Initial Closed In Period Minutes 30 (D) 22 P.S.I.
 Final Flow Period Minutes -- (E) -- P.S.I. to (F) -- P.S.I.
 Final Closed In Period Minutes -- (G) -- P.S.I.
 Final Hydrostatic Pressure (H) 1620 P.S.I.



DIAMOND TESTING
P.O. Box 157
HOISINGTON, KANSAS 67544
(620) 653-7550 • (800) 542-7313

Page 2 of 3 Pages

FLUID SAMPLE DATA

Company L. D. Drilling, Inc.
Lease & Well No. Frieb No. 1
Date 3-3-05 Sec. 10 Twp. 18 S Range 15 W
Formation Test No. 10 Interval Tested From 3,518 ft. to 3,528 ft. Total Depth 3,528 ft.
Formation Arbuckle

	<u>MUD PIT</u>	<u>RECOVERY</u>
Viscosity	<u>60</u> CP	<u>50</u> CP
Weight	<u>9.0</u>	<u>9.0</u>
Water Loss	<u>12.0</u> CC	<u>12.0</u> CC
PH Factor	<u>9.5</u>	<u>9.5</u>

	<u>RESISTIVITY</u>	<u>CHLORIDE CONTENT</u>
Recovery Water	<u>--</u> @ <u>--</u> °F.	<u>--</u> ppm
Recovery Mud	<u>--</u> @ <u>--</u> °F.	<u>--</u> ppm
Recovery Mud Filtrate	<u>.90</u> @ <u>70</u> °F.	<u>7,000</u> ppm
Mud Pit Sample	<u>--</u> @ <u>--</u> °F.	<u>--</u> ppm
Mud Pit Sample Filtrate	<u>1.00</u> @ <u>65</u> °F.	<u>7,200</u> ppm

Sample Taken By JOHN C. RIEDL
Witness By Kim B. Shoemaker

Remarks Pit filtrate triton dish chlorides were 7,000 Ppm.
Recovery filtrate triton dish chlorides were 7,000 Ppm.

GENERAL INFORMATION

Client Information:

Company: L D DRILLING INC

Contact: L D DAVIS

Phone: Fax: e-mail:

Site Information:

Contact: KIM SHOEMAKER

Phone: Fax: e-mail:

Well Information:

Name: FRIEB #1

Operator: L DDRILLING INC

Location-Downhole: DST #10 3518-3528

Location-Surface: S10/18S/15W BARTON COUNTY

Test Information:

Company: DIAMOND TESTING

Representative: JOHN RIEDL

Supervisor: KIM SHOEMAKER

Test Type: CONVENTIONAL Job Number: D38

Test Unit: 2

Start Date: 2005/03/03 Start Time: 11:50:00

End Date: 2005/03/03 End Time: 15:40:00

Report Date: 2005/03/03 Prepared By: JOHNN RIEDL

Qualified By: KIM SHOEMAKER

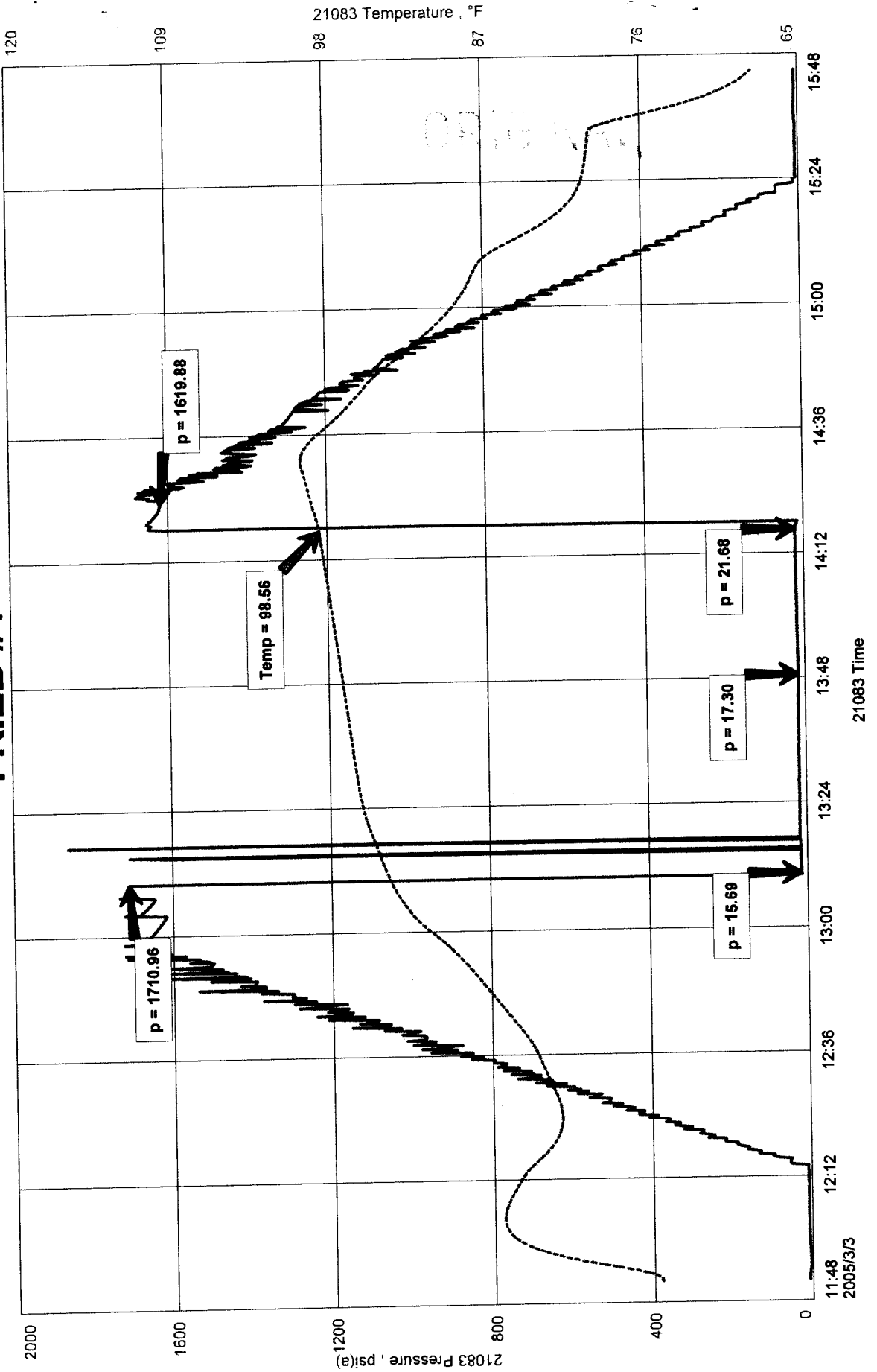
Remarks:

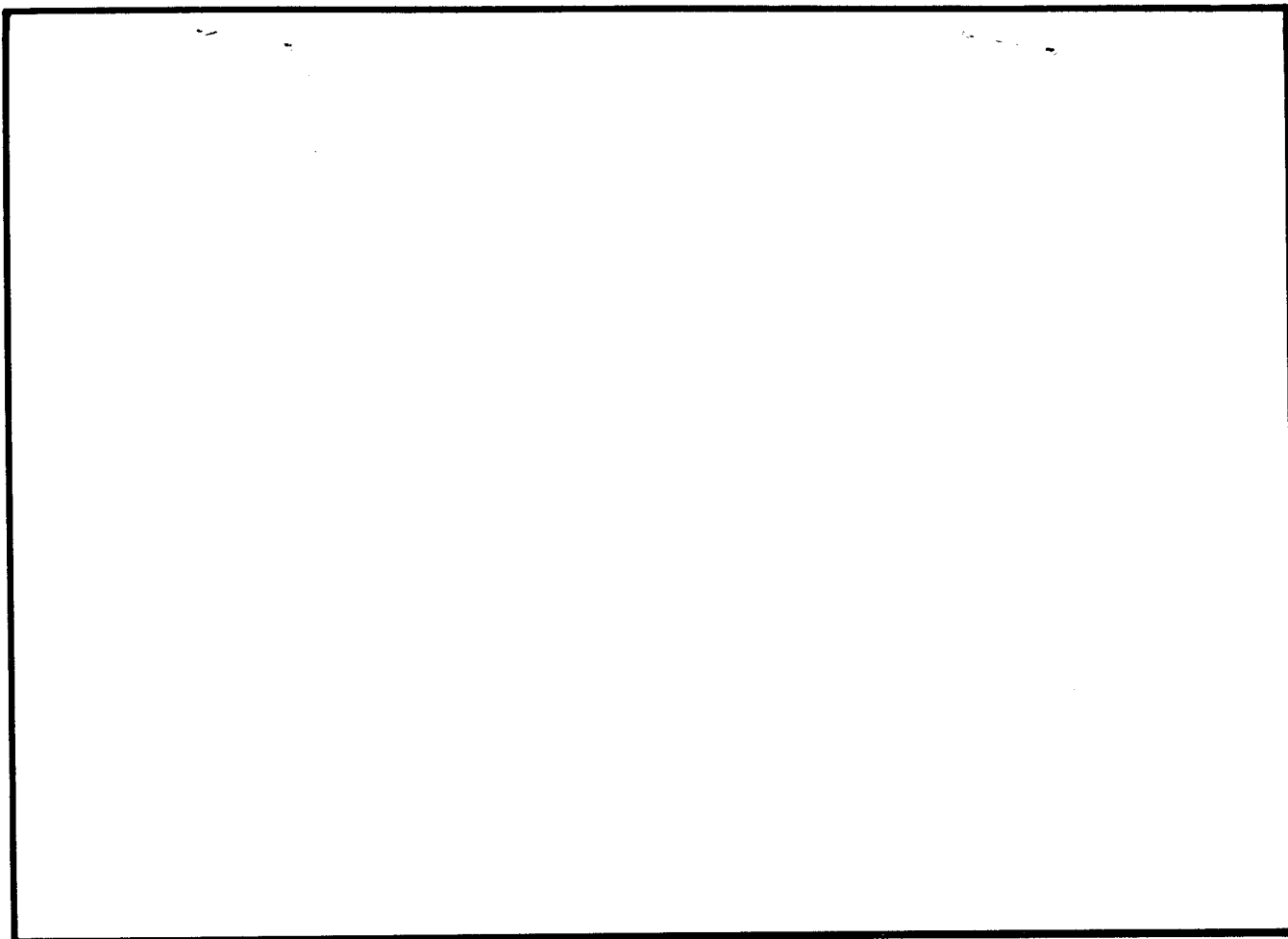
RECOVERY 3' DRILLING MUD

FRIEB #1
Job Number: D38
ARRB OK'ed

LD DRILLING INC
S10/18S/15W BARTON COUNTY
Start Test Date: 2005/03/03
Final Test Date: 2005/03/03

FRIEB #1





This is an actual photograph of recorder chart.

POINT	PRESSURE Elec.		PSI
	Field Reading	Office Reading	
(A) Initial Hydrostatic Mud	1711	1711	PSI
(B) First Initial Flow Pressure	16	16	PSI
(C) First Final Flow Pressure	17	17	PSI
(D) Initial Closed-in Pressure	22	22	PSI
(E) Second Initial Flow Pressure	--	--	PSI
(F) Second Final Flow Pressure	--	--	PSI
(G) Final Closed-in Pressure	--	--	PSI
(H) Final Hydrostatic Mud	1620	1620	PSI



DIAMOND TESTING

ORIGINAL

P.O. Box 157
 HOISINGTON, KANSAS 67544
 (620) 653-7550 • (800) 542-7313
 STC 21083.D39

Page 1 of 3 Pages

Company L. D. Drilling, Inc. Lease & Well No. Frieb No. 1
 Elevation 1960 KB Formation Arbuckle Effective Pay --Ft. Ticket No. J1629
 Date 3-3-05 Sec. 10 Twp. 18S Range 15W County Barton State Kansas
 Test Approved By Kim B. Shoemaker Diamond Representative John C. Riedl

Formation Test No. 11 Interval Tested from 3,524 ft. to 3,541 ft. Total Depth 3,541 ft.
 Packer Depth 3,519 ft. Size 6 3/4 in. Packer Depth -- ft. Size -- in.
 Packer Depth 3,524 ft. Size 6 3/4 in. Packer Depth -- ft. Size -- in.
 Depth of Selective Zone Set ft.

Top Recorder Depth (Inside) 3,527 ft. Recorder Number 21083 Cap. 5,000 psi
 Bottom Recorder Depth (Outside) 3,538 ft. Recorder Number 11073 Cap. 4,000 psi
 Below Straddle Recorder Depth ft. Recorder Number Cap. psi

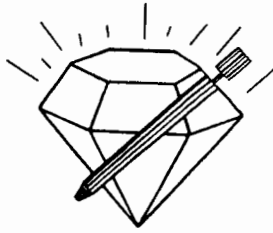
Drilling Contractor VAL Energy, Inc. - Rig 3 Drill Collar Length -- ft. I.D. -- in.
 Mud Type Chemical Viscosity 55 Weight Pipe Length -- ft. I.D. -- in.
 Weight 9.0 Water Loss 13.0 cc. Drill Pipe Length 3,500 ft. I.D. 3 1/2 in.
 Chlorides 8,000 P.P.M. Test Tool Length 24 ft. Tool Size 3 1/2 - IF in.
 Jars: Make Bowen Serial Number Not Run Anchor Length 17 ft. Size 4 1/2 - FH in.
 Did Well Flow? No Reversed Out No Surface Choke Size 1 in. Bottom Choke Size 5/8 in.
 Main Hole Size 7 7/8 in. Tool Joint Size 4 1/2 - XH in.

Blow: 1st Open: Strong blow. Off bottom of bucket in 5 mins. Weak blow back during shut-in.
 2nd Open: Good, 6 in., blow. Weak blow back during shut-in.

Recovered 60 ft. of gas in pipe
 Recovered 120 ft. of clean gassy oil = 1.704000 bbls. (Grind out: 5%-gas; 95%-oil) Gravity: 38 @ 60°
 Recovered 90 ft. of water & mud cut gassy oil = 1.278000 bbls. (Grind out: 10%-water; 10%-mud; 10%-gas; 70%-oil)
 Recovered 90 ft. of gassy water = 1.278000 bbls. (Grind out: 10%-gas; 90%-water) Chlorides: 36,000 Ppm
 Recovered 300 ft. of TOTAL FLUID = 4.260000 bbls.

Remarks

Time Set Packer(s) 11:20 ~~P.M.~~ ^{A.M.} Time Started Off Bottom 2:20 ~~P.M.~~ ^{A.M.} Maximum Temperature 116°
 Initial Hydrostatic Pressure (A) 1691 P.S.I.
 Initial Flow Period Minutes 30 (B) 49 P.S.I. to (C) 102 P.S.I.
 Initial Closed In Period Minutes 45 (D) 619 P.S.I.
 Final Flow Period Minutes 45 (E) 113 P.S.I. to (F) 152 P.S.I.
 Final Closed In Period Minutes 60 (G) 541 P.S.I.
 Final Hydrostatic Pressure (H) 1630 P.S.I.



DIAMOND TESTING
P.O. Box 157
HOISINGTON, KANSAS 67544
(620) 653-7550 • (800) 542-7313

Page 2 of 3 Pages

FLUID SAMPLE DATA

Company L. D. Drilling, Inc.
Lease & Well No. Frieb No. 1
Date 3-3-05 Sec. 10 Twp. 18 S Range 15 W
Formation Test No. 11 Interval Tested From 3,524 ft. to 3,541 ft. Total Depth 3,541 ft.
Formation Arbuckle

	<u>MUD PIT</u>	<u>RECOVERY</u>
Viscosity	<u>55</u> CP	<u>--</u> CP
Weight	<u>9.0</u>	<u>--</u>
Water Loss	<u>13.0</u> CC	<u>--</u> CC
PH Factor	<u>10.0</u>	<u>7.0</u>

	<u>RESISTIVITY</u>	<u>CHLORIDE CONTENT</u>
Recovery Water	<u>.24</u> @ <u>60</u> °F.	<u>34,000</u> ppm
Recovery Mud	<u>--</u> @ <u>--</u> °F.	<u>--</u> ppm
Recovery Mud Filtrate	<u>--</u> @ <u>--</u> °F.	<u>--</u> ppm
Mud Pit Sample	<u>--</u> @ <u>--</u> °F.	<u>--</u> ppm
Mud Pit Sample Filtrate	<u>1.90</u> @ <u>40</u> °F.	<u>8,000</u> ppm

Sample Taken By JOHN C. RIEDL

Witness By Kim B. Shoemaker

Remarks Pit filtrate triton dish chlorides were 8,000 Ppm.
Recovery water dish chlorides were 36,000 Ppm.

GENERAL INFORMATION

Client Information:

Company: L D DRILLING INC

Contact: L D DAVIS

Phone: Fax: e-mail:

Site Information:

Contact: KIM SHOEMAKER

Phone: Fax: e-mail:

Well Information:

Name: FRIEB #1

Operator: L D DRILLING INC

Location-Downhole: DST #11 3524-3541

Location-Surface: S10/18S/15W BARTON COUNTY

Test Information:

Company: DIAMOND TESTING

Representative: JOHN RIEDL

Supervisor: KIM SHOEMAKER

Test Type: CONVENTIONAL Job Number: D39

Test Unit: 2

Start Date: 2005/03/03 Start Time: 22:00:00

End Date: 2005/03/04 End Time: 05:32:00

Report Date: 2005/03/04 Prepared By: JOHN RIEDL

Remarks: Qualified By: KIM SHOEMAKER

RECOVEY: 60' GIP

120' CGO [5%GAS 95%OIL 38 GRAVITY]

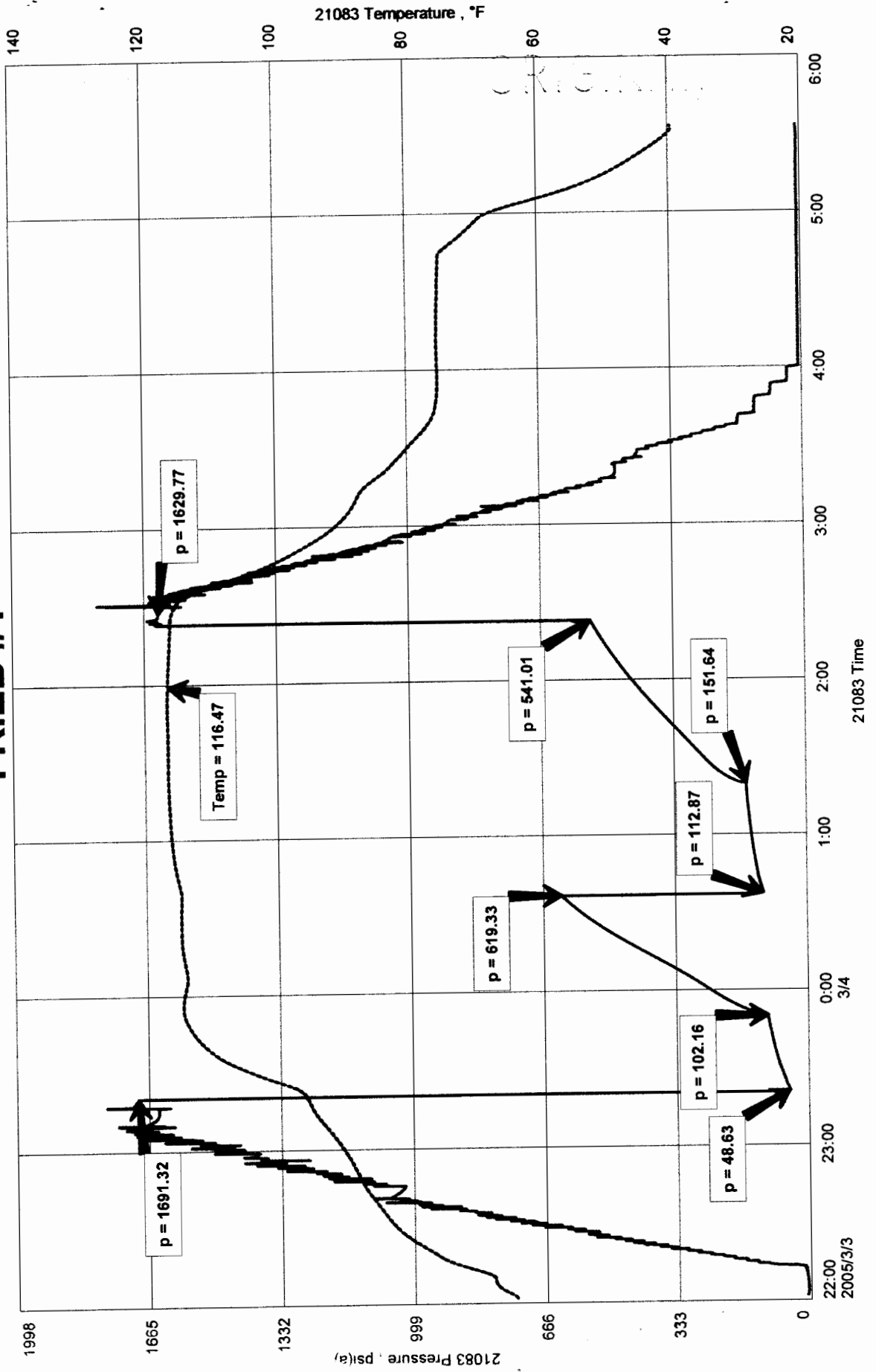
90' W+MCGO [10%WATER 10%MUD 10%GAS 70%OIL]

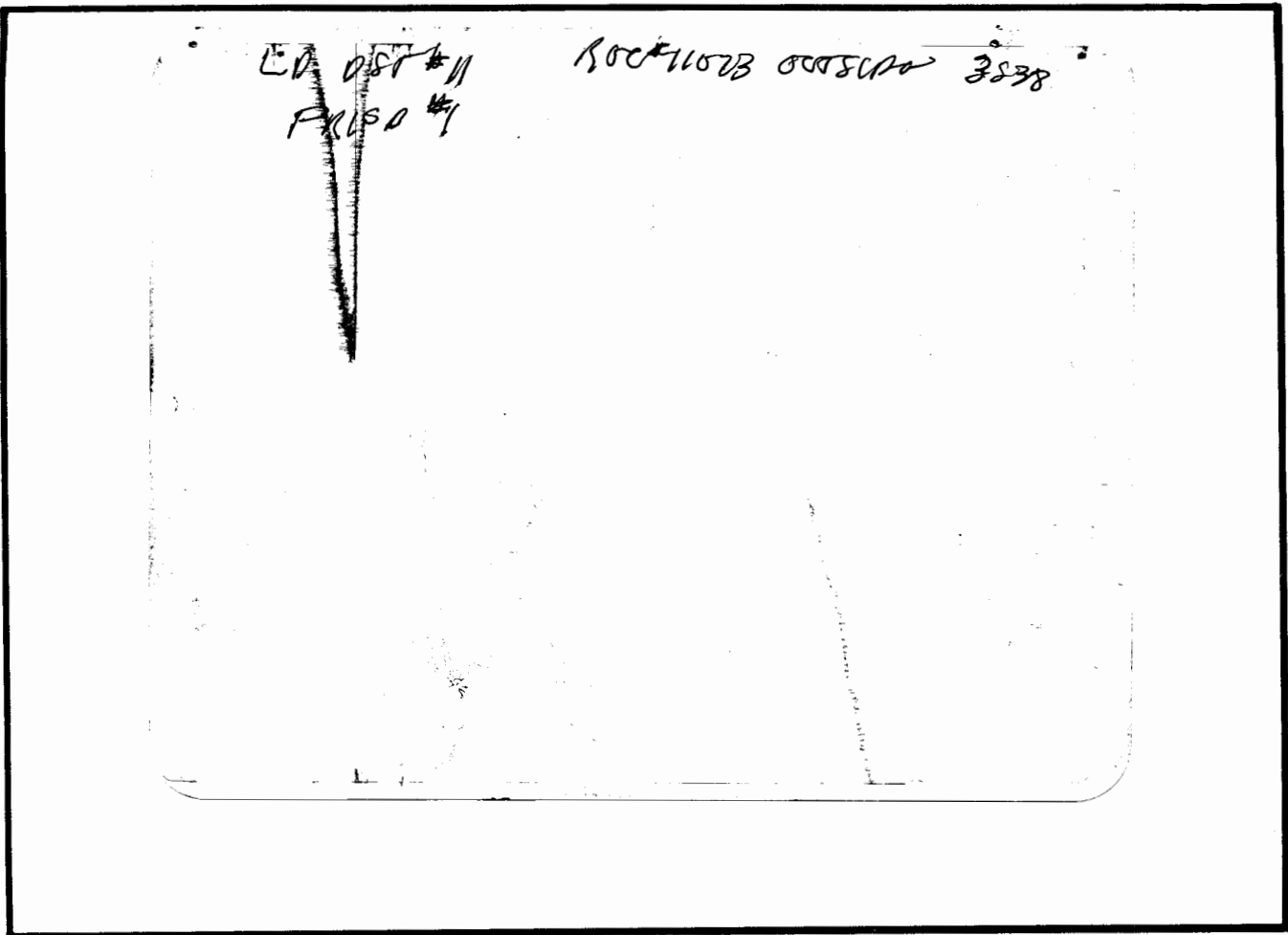
90' GW [10%GAS 90%WATER CHLORIDES 36<000Ppm]

FRIEB #1
 Formation: ARBUCKLE
 Job Number: D39

LD DRILLING INC
 DST #11 3524-3541
 Start Test Date: 2005/03/03
 Final Test Date: 2005/03/04

FRIEB #1





This is an actual photograph of recorder chart.

POINT	PRESSURE Elec.		
	Field Reading	Office Reading	
(A) Initial Hydrostatic Mud	1691	1691	PSI
(B) First Initial Flow Pressure.....	49	49	PSI
(C) First Final Flow Pressure	102	102	PSI
(D) Initial Closed-in Pressure	619	619	PSI
(E) Second Initial Flow Pressure.....	113	113	PSI
(F) Second Final Flow Pressure.....	152	152	PSI
(G) Final Closed-in Pressure.....	541	541	PSI
(H) Final Hydrostatic Mud	1630	1630	PSI