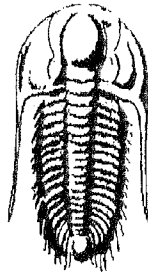


31-18s-17w



**TRILOBITE
TESTING, INC.**

DRILL STEM TEST REPORT

Prepared For: **Marmik Oil Co.**

200 N Jefferson Suite 500
El Dorado Ar. 71730

ATTN: Curtis G. Morril

31--18s--17w

Poho # 1-A

Start Date: 2005.04.22 @ 23:08:48

End Date: 2005.04.23 @ 04:41:18

Job Ticket #: 21133 DST #: 1

15-165-21776

*W2 W2 SE NW
2000 FWL 1450 FWL*

Trilobite Testing, Inc

PO Box 362 Hays, KS 67601

ph: 785-625-4778 fax: 785-625-5620

Marmik Oil Co.

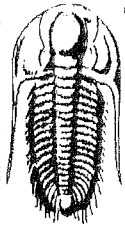
Poho # 1-A

31--18s--17w

DST # 1

Arbuckle

2005.04.22



**TRILOBITE
TESTING, INC**

DRILL STEM TEST REPORT

TOOL DIAGRAM

Marmik Oil Co.
200 N Jefferson Suite 500
El Dorado Ar. 71730
ATTN: Curtis G. Morrill

Poho # 1-A
31-18s-17w
Job Ticket: 21133 DST#: 1
Test Start: 2005.04.22 @ 23:08:48

Tool Information

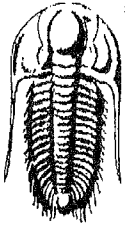
| | | | | |
|---------------------------|--------------------|-----------------------|-------------------|------------------------------------|
| Drill Pipe: | Length: 3705.00 ft | Diameter: 3.80 inches | Volume: 51.97 bbl | Tool Weight: 2200.00 lb |
| Heavy Wt. Pipe: | Length: 0.00 ft | Diameter: 2.70 inches | Volume: 0.00 bbl | Weight set on Packer: 25000.00 lb |
| Drill Collar: | Length: 30.00 ft | Diameter: 2.25 inches | Volume: 0.15 bbl | Weight to Pull Loose: 45000.00 lb |
| | | <u>Total Volume:</u> | 52.12 bbl | Tool Chased 0.00 ft |
| Drill Pipe Above KB: | 27.00 ft | | | String Weight: Initial 40000.00 lb |
| Depth to Top Packer: | 3728.00 ft | | | Final 40000.00 lb |
| Depth to Bottom Packer: | ft | | | |
| Interval between Packers: | 68.00 ft | | | |
| Tool Length: | 88.00 ft | | | |
| Number of Packers: | 2 | Diameter: 6.75 inches | | |

Tool Comments:

| Tool Description | Length (ft) | Serial No. | Position | Depth (ft) | Accum. Lengths |
|------------------|-------------|------------|----------|------------|------------------------------------|
| Change Over Sub | 1.00 | | | 3709.00 | |
| Shut In Tool | 5.00 | | | 3714.00 | |
| Hydraulic tool | 5.00 | | | 3719.00 | |
| Packer | 4.00 | | | 3723.00 | 20.00 Bottom Of Top Packer |
| Packer | 5.00 | | | 3728.00 | |
| Stubb | 1.00 | | | 3729.00 | |
| Perforations | 6.00 | | | 3735.00 | |
| Recorder | 0.00 | 8018 | Inside | 3735.00 | |
| Change Over Sub | 1.00 | | | 3736.00 | |
| Blank Spacing | 31.00 | | | 3767.00 | |
| Change Over Sub | 1.00 | | | 3768.00 | |
| Recorder | 0.00 | 11084 | Outside | 3768.00 | |
| Perforations | 25.00 | | | 3793.00 | |
| Bullnose | 3.00 | | | 3796.00 | 68.00 Bottom Packers & Anchor |

Total Tool Length: 88.00

**RECEIVED
MAY 26 2005
KCC WICHITA**



TRILOBITE
TESTING, INC

DRILL STEM TEST REPORT

FLUID SUMMARY

Marmik Oil Co.

Poho # 1-A

200 N Jefferson Suite 500
El Dorado Ar. 71730

31-18s-17w

Job Ticket: 21133

DST#: 1

ATTN: Curtis G.Morril

Test Start: 2005.04.22 @ 23:08:48

Mud and Cushion Information

| | | | |
|----------------------------------|----------------------------|-----------------|---------|
| Mud Type: Gel Chem | Cushion Type: | Oil API: | deg API |
| Mud Weight: 9.00 lb/gal | Cushion Length: ft | Water Salinity: | ppm |
| Viscosity: 53.00 sec/qt | Cushion Volume: bbl | | |
| Water Loss: 8.79 in ³ | Gas Cushion Type: | | |
| Resistivity: ohm.m | Gas Cushion Pressure: psig | | |
| Salinity: ppm | | | |
| Filter Cake: inches | | | |

Recovery Information

Recovery Table

| Length ft | Description | Volume bbl |
|--------------|----------------------------|---------------|
| 5.00 | Drilling mud few oil spots | 0.025 |

Total Length: 5.00 ft Total Volume: 0.025 bbl

Num Fluid Samples: 0

Num Gas Bombs: 0

Serial #:

Laboratory Name:

Laboratory Location:

Recovery Comments:

ORIGINAL

DST Test Number: 1

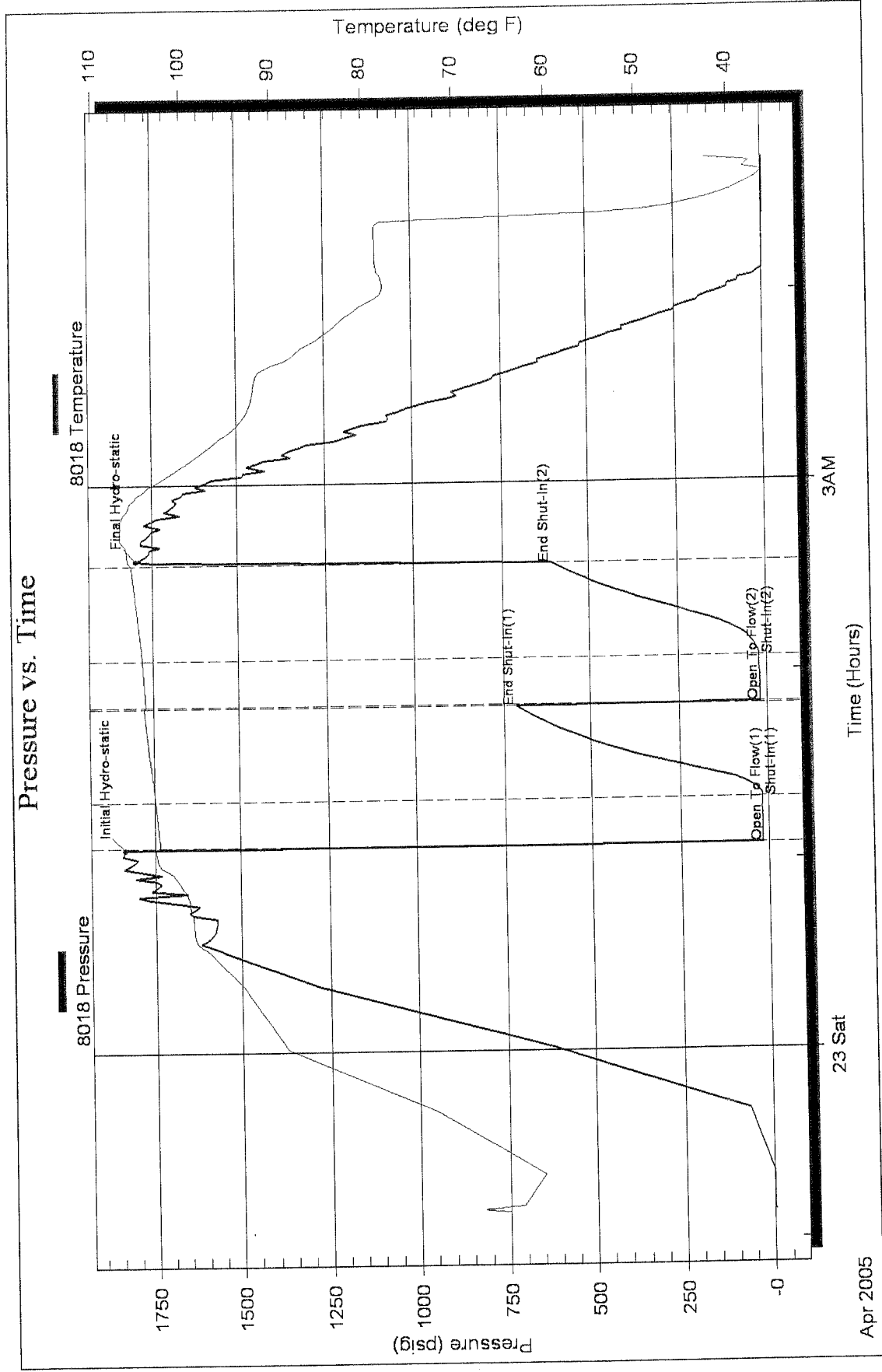
31-18s-17w

Marmik Oil Co.

Inside

Serial #: 8018

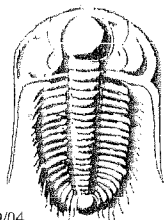
Pressure vs. Time



RECEIVED
MAY 28 2005
KCC WICHITA

Ref. No: 21133

Trilobite Testing, Inc



TRILOBITE TESTING INC.

P.O. Box 362 • Hays, Kansas 67601

ORIGINAL

No 21133

9/04

Test Ticket

| | | |
|---|---|--|
| Well Name & No. <u>POHC # 1-A</u> | Test No. <u>#1</u> | Date <u>4-22-05</u> |
| Company <u>MARMIK OIL Co.</u> | Zone Tested <u>ARBUCKLE</u> | |
| Address <u>200 N. JEFFERSON, SUITE 500 EL DORADO, AR 71730</u> | Elevation <u>2025</u> KB <u>2020</u> GL | |
| Co. Rep / Geo. <u>RANDY KILIAN</u> | Cont. <u>BERENTZ</u> | Est. Ft. of Pay _____ Por. _____ % |
| Location: Sec. <u>31</u> Twp. <u>18s</u> Rge. <u>17w</u> Co. <u>RUSH</u> State <u>KS.</u> | | |
| No. of Copies _____ | Disbtribution Sheet (Y, N) _____ | Turnkey (Y, N) _____ Evaluation (Y, N) _____ |

| | | |
|--|--|--|
| Interval Tested <u>3728 To 3796</u> | Initial Str Wt./Lbs. <u>40,000</u> | Unseated Str Wt/Lbs. <u>40,000</u> |
| Anchor Length <u>68'</u> | Wt. Set Lbs. <u>25,000</u> | Wt. Pulled Loose/Lbs. <u>45,000</u> |
| Top Packer Depth <u>3723</u> | Tool Weight <u>2,200</u> | |
| Bottom Packer Depth <u>3728</u> | Hole Size 7 7/8" <input checked="" type="checkbox"/> | Rubber Size 6 3/4" <input checked="" type="checkbox"/> |
| Total Depth <u>3796</u> | Wt. Pipe Run <u>0</u> | Drill Collar Run <u>31'</u> |
| Mud Wt. <u>9.0</u> LCM <u>1 1/2 #</u> Vis. <u>53</u> WL <u>8.8</u> | Drill Pipe Size <u>4 1/2 XH</u> | Ft. Run <u>3705</u> |
| Blow Description <u>FF-WEAK DEAD IN 10-MIN</u> | <u>FSI-DEAD</u> | |
| <u>FF-DEAD</u> | <u>FSI-DEAD</u> | |

| | | | |
|--------------------------------|------------------------------|------------------------|---|
| Recovery - Total Feet <u>5</u> | GIP <u>0</u> | Ft. in DC <u>5</u> | Ft. in DP <u>0</u> |
| Rec. <u>5</u> | Feet of <u>DRILLING MUD</u> | %gas _____ | %oil _____ |
| Rec. _____ | Feet of <u>FEW OIL SPOTS</u> | %gas _____ | %oil _____ |
| Rec. _____ | Feet of _____ | %gas _____ | %oil _____ |
| Rec. _____ | Feet of _____ | %gas _____ | %oil _____ |
| Rec. _____ | Feet of _____ | %gas _____ | %oil _____ |
| BHT <u>105</u> | °F Gravity <u>-</u> | °API D @ <u>-</u> | °F Corrected Gravity <u>-</u> °API _____ |
| RW <u>-</u> | @ <u>-</u> °F | Chlorides <u>-</u> ppm | Recovery <u>-</u> Chlorides <u>-</u> ppm System _____ |

| | | | | |
|----------------------------------|----------------------|-----------------|---------------------------|---------------------|
| (A) Initial Hydrostatic Mud | AK-1 <u>1837</u> PSI | Alpine | Recorder No. <u>8018</u> | Test <u>B. HOLE</u> |
| (B) First Initial Flow Pressure | <u>16</u> PSI | | (depth) <u>3735</u> | Jars _____ |
| (C) First Final Flow Pressure | <u>18</u> PSI | | Recorder No. <u>11084</u> | Safety Jt. _____ |
| (D) Initial Shut-In Pressure | <u>715</u> PSI | | (depth) <u>3768</u> | Circ Sub _____ |
| (E) Second Initial Flow Pressure | <u>19</u> PSI | | Recorder No. _____ | Sampler _____ |
| (F) Second Final Flow Pressure | <u>21</u> PSI | | (depth) _____ | Straddle _____ |
| (G) Final Shut-In Pressure | <u>608</u> PSI | Initial Opening | <u>15</u> | Ext. Packer _____ |
| (Q) Final Hydrostatic Mud | <u>1797</u> PSI | Initial Shut-In | <u>30</u> | Shale Packer _____ |

TRILOBITE TESTING INC. SHALL NOT BE LIABLE FOR DAMAGED OF ANY KIND OF THE PROPERTY OR PERSONNEL OF THE ONE FOR WHOM A TEST IS MADE, OR FOR ANY LOSS SUFFERED OR SUSTAINED, DIRECTLY OR INDIRECTLY, THROUGH THE USE OF ITS EQUIPMENT, OR ITS STATEMENTS OR OPINION CONCERNING THE RESULTS OF ANY TEST. TOOLS LOST OR DAMAGED IN THE HOLE SHALL BE PAID FOR AT COST BY THE PARTY FOR WHOM THE TEST IS MADE.

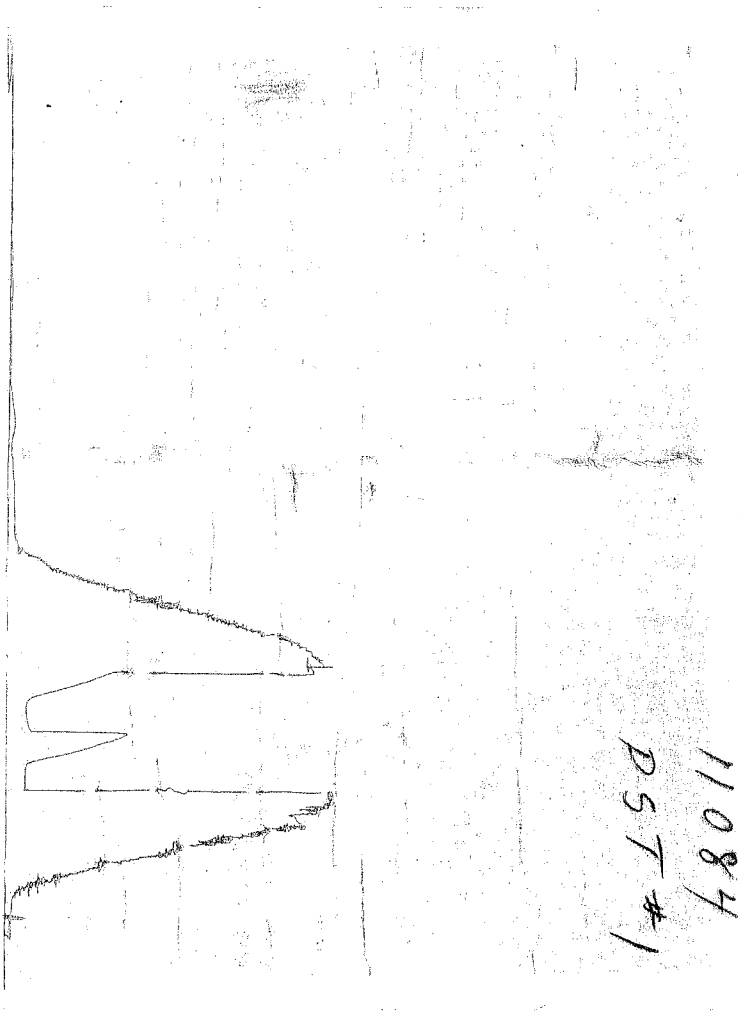
Approved By _____
 Our Representative John Schmidt

| | | |
|---------------|--------------|---------------------------|
| Final Flow | <u>15</u> | Ruined Packer _____ |
| Final Shut-In | <u>30</u> | Mileage <u>RT. - 67</u> |
| T-On Location | <u>21:00</u> | Sub Total: _____ |
| T-Started | <u>23:08</u> | Std. By <u>RECEIVED</u> |
| T-Open | <u>01:04</u> | Other _____ |
| T-Pulled | <u>02:35</u> | Total: <u>MAY 26 2005</u> |
| T-Out | <u>04:41</u> | |

KCC WICHITA

ORIGINAL

CHART PAGE
This is a photocopy of the actual AK-1 recorder chart.



RECEIVED
MAY 26 2005
KCC WICHITA