

RUSH CENTER POOL  
Rush Center NE Prospect

The Rush Center Pool consists of several northwest-southeast trending segments, separated by a mature karst topography drainage pattern.

Imperial's Rush Center NE Prospect proposes to extend the trend that runs from the northeast quarter of section 16 through the southwest quarter of section 15 and down to the westhalf of the northeast quarter of section 22.

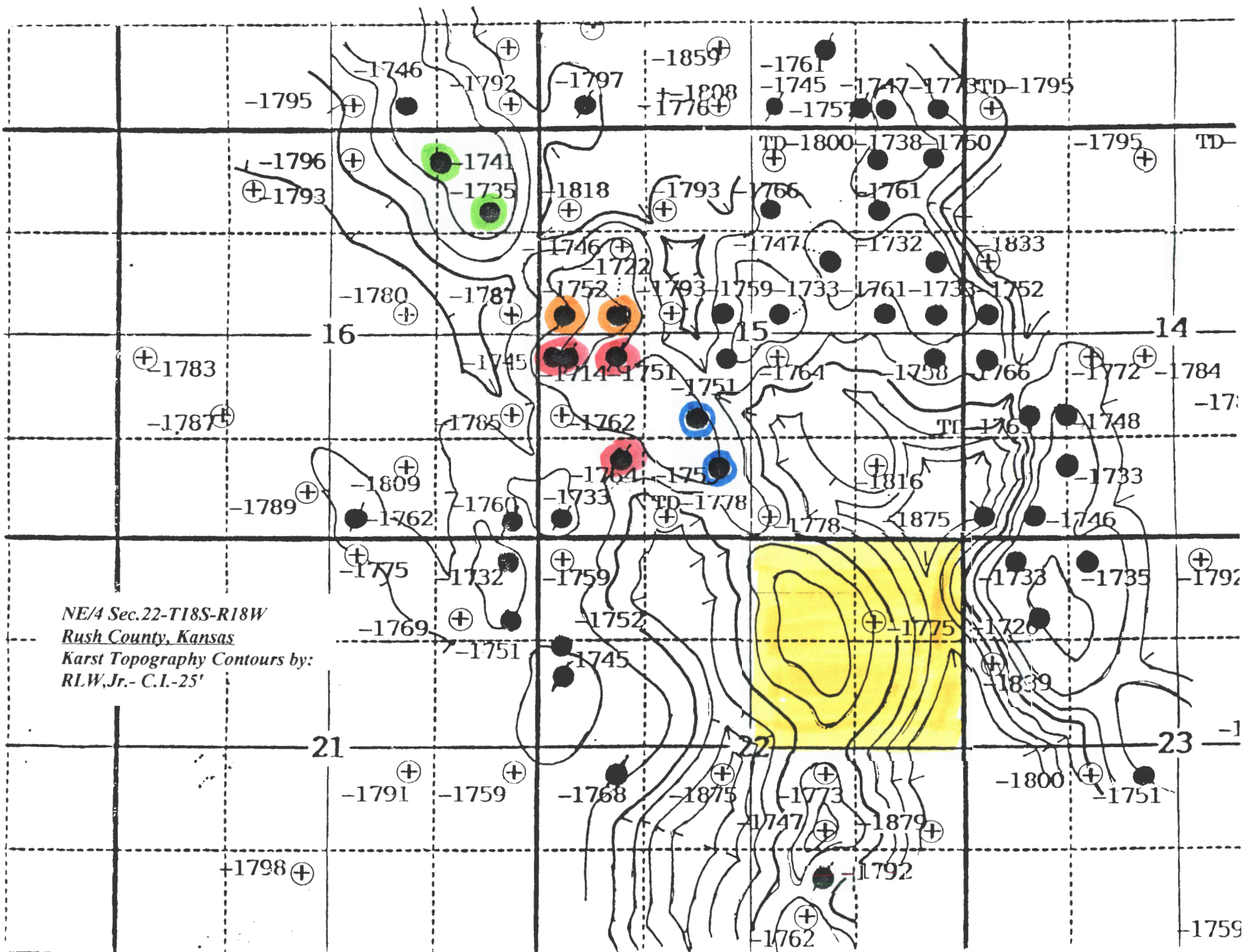
This trend has been very prolific in its oil production. The two wells in the northeast quarter of section 16 have produced 135,989 bbls (GREEN). The two wells in the southwest forty of the northwest quarter of section 15 have produced 367,689 bbls (ORANGE). The three wells in the northwest forty of the southwest quarter of section 15 and the well in the northeast of the southwest forty of section 15 have produced 276,568 bbls (RED). The two wells, one in the southeast forty and the other in the southhalf of the northeast forty of section 15 have produced 143,187 bbls (BLUE). These ten wells have produced a total of 923,433 bbls or an average of 92,343 bbls per well.

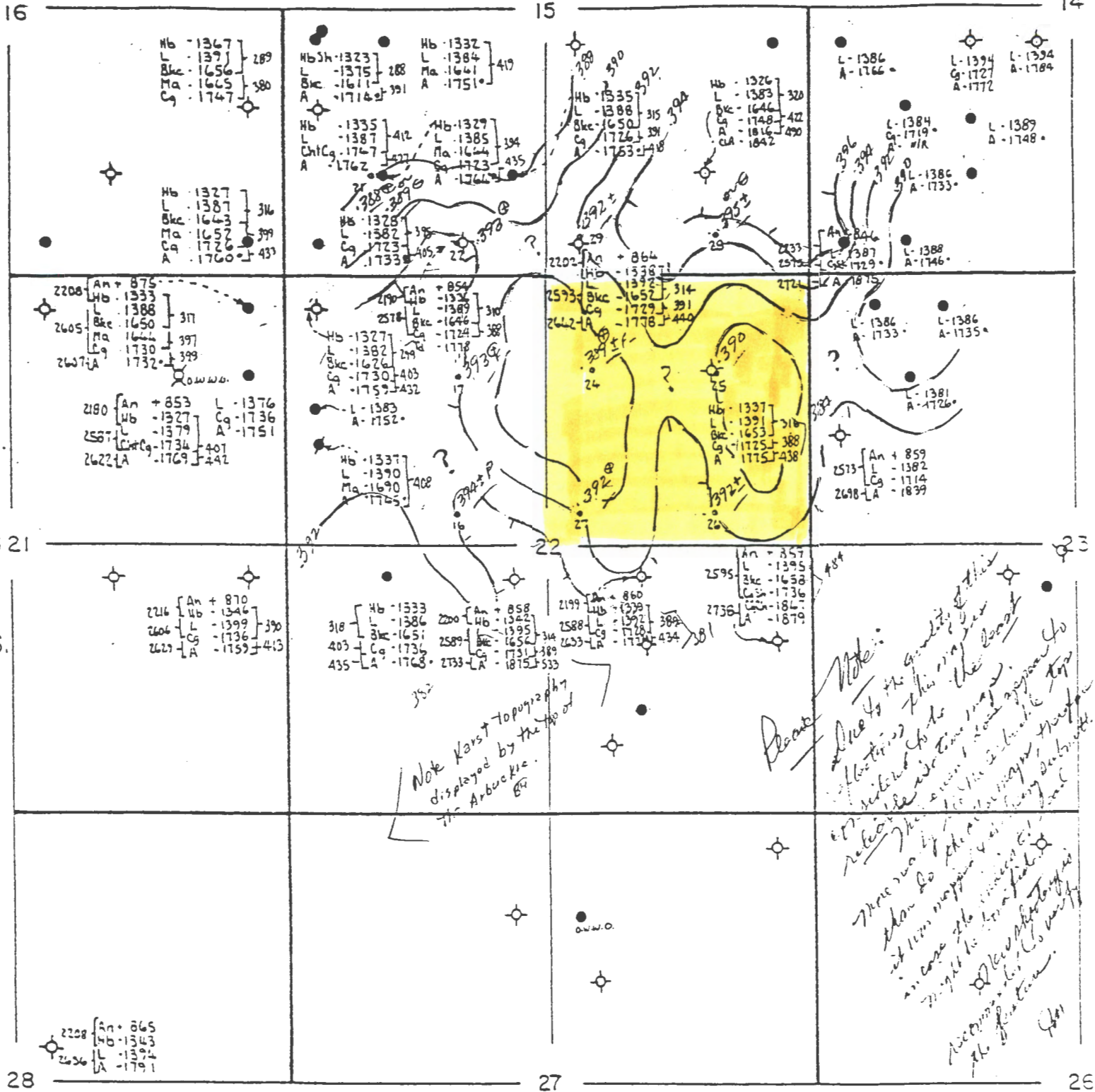
Imperial's Rush Center NE Prospect is on trend with these wells and is presumed to be on a separate structure, indicated by subsurface mapping and seismic data (yellow).

Occasionally some oil produced is found in the Conglomerate sand, in the drainage lows flanking the dolomite pinnacles of the Arbuckle formation.

Upon success of this venture Imperial has other geologic and geophysical leads along this karst dominated Arbuckle fairway.

TOTAL OIL PRODUCTION FROM WELLS ON THE SUBSURFACE MAP: 2,365,422  
WHICH INCLUDES THE FOLLOWING;  
S/2 SEC. 9, S/2 SEC. 10, ALL of SECTIONS 14,15,16,  
21 and NW/4 SEC. 22 and NW/4 SEC. 23.





### E. RUSH CENTER POOL

RUSH COUNTY, KANSAS

## KANSAS SEISMIC EXCHANGE INC.

WICHITA, KANSAS 67202

FOR

## IMPERIAL OIL PROPERTIES, INC.

DATUM - SEA LEVEL

SCALE - 4" = 1 MILE

DATE - 7-17-02

Bob Williams & Jon T. Williams  
263-5596  
265-6977 (Auto)

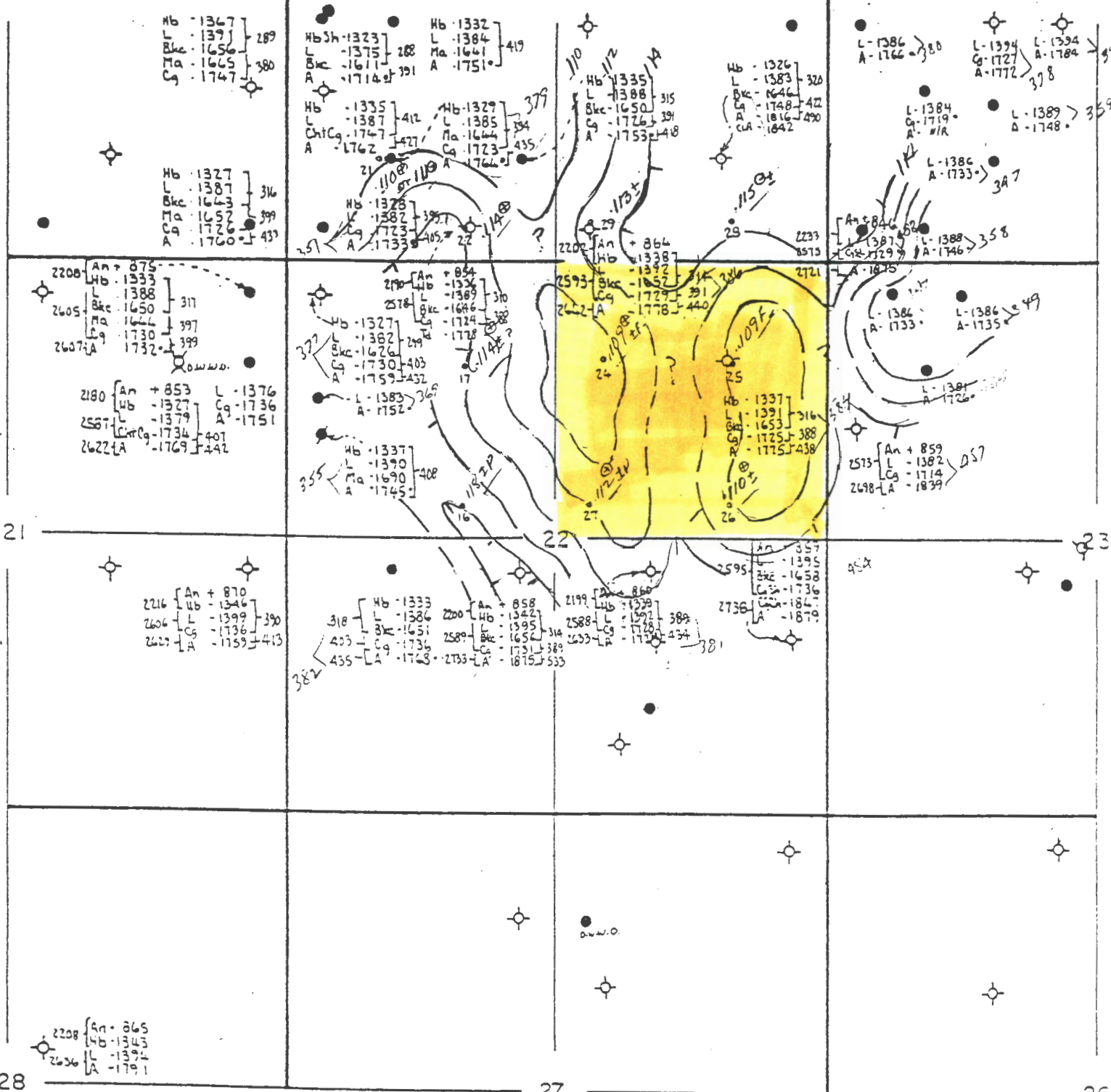
CONTOUR INTERVAL .002 sec

PREPARED BY *Keith Shaw*

ST-66-11A S10/2  
b-301-200-dual

[15' cycle]

Anhydrite to Near Arbuckle (Isotime)



### E. RUSH CENTER POOL

RUSH COUNTY, KANSAS

## KANSAS SEISMIC EXCHANGE INC.

WICHITA, KANSAS 67202

FOR

IMPERIAL OIL PROPERTIES, INC.

Near Tarkio to Near Arbuckle? (Estimated)

DATUM - SEA LEVEL

CONTOUR INTERVAL .0025cc

SCALE - 4" = 1 MILE

PREPARED BY

DATE - 7-16-07

*Bill A. Jones*

Bob U. Williams + Jon T. Williams

263-5596

265-6977

(T. to A.) 57-66 F. 1/2"