



# DIAMOND TESTING

P.O. Box 157  
HOISINGTON, KANSAS 67544  
(620) 653-7550 • (800) 542-7313  
STC 21098.D342

Company Mull Drilling Co., Inc. Lease & Well No. Showalter-Bannister No. 1-33  
Elevation 2169KB Formation Cherokee Effective Pay      Ft. Ticket No. 2224  
Date 11-23-06 Sec. 33 Twp. 18S Range 20W County Rush State Kansas  
Test Approved By Kevin Kessler Diamond Representative Roger D. Friedly

Formation Test No. 1 Interval Tested from 4,070 ft. to 4,164 ft. Total Depth 4,164 ft.  
Packer Depth 4,065 ft. Size 63/4 in. Packer Depth      ft. Size      in.  
Packer Depth 4,070 ft. Size 63/4 in. Packer Depth      ft. Size      in.  
Depth of Selective Zone Set      ft.

Top Recorder Depth (Inside) 4,051 ft. Recorder Number 21098 Cap. 5,000 psi  
Bottom Recorder Depth (Outside) 4,161 ft. Recorder Number 13387 Cap. 4,000 psi  
Below Straddle Recorder Depth      ft. Recorder Number      Cap.      psi

Drilling Contractor Southwind Drilling, Inc. - Rig 1 Drill Collar Length      ft. I.D.      in.  
Mud Type Chemical Viscosity 48 Weight Pipe Length      ft. I.D.      in.  
Weight 9.2 Water Loss 9.6 cc. Drill Pipe Length 4,038 ft. I.D. 3 1/2 in.  
Chlorides 2,000 P.P.M. Test Tool Length 32 ft. Tool Size 3 1/2 - IF in.  
Jars: Make Bowen Serial Number No. 1 Anchor Length 32' perf. w/ 62' drill pipe Size 4 1/2 - FH in.  
Did Well Flow? No Reversed Out No Surface Choke Size 1 in. Bottom Choke Size 5/8 in.  
Main Hole Size 7 7/8 in. Tool Joint Size 4 1/2 - XH in.

Blow: 1st Open: Strong blow. Off bottom of bucket in 1 min.  
2nd Open: N/A

Recovered 226 ft. of watery mud = 3.209200 bbls. (Grind out: 12%-water; 88%-mud)  
Recovered 186 ft. of muddy water = 2.641200 bbls. (Grind out: 21%-mud; 79%-water)  
Recovered 310 ft. of salt water = 4.402000 bbls.  
Recovered 722 ft. of TOTAL FLUID = 10.252400 bbls.  
Recovered      ft. of       
Remarks Tool Sample Grind Out: 100%-salt water with good oil specks

Time Set Packer(s) 1:55 ~~P.M.~~ A.M. Time Started Off Bottom 2:10 ~~P.M.~~ A.M. Maximum Temperature 113°  
Initial Hydrostatic Pressure      (A) 1944 P.S.I.  
Initial Flow Period      Minutes 15 (B) 124 P.S.I. to (C) 339 P.S.I.  
Initial Closed In Period      Minutes      (D)      P.S.I.  
Final Flow Period      Minutes      (E)      P.S.I. to (F)      P.S.I.  
Final Closed In Period      Minutes      (G)      P.S.I.  
Final Hydrostatic Pressure      (H) 1940 P.S.I.



**DIAMOND TESTING**  
P. O. Box 157  
HOISINGTON, KANSAS 67544  
(800) 542-7313

**FLUID SAMPLE DATA**

Company Mull Drilling Co., Inc.  
Lease & Well No. Showalter-Bannister No. 1-33  
Date 11-23-06 Sec. 33 Twp. 18 S Range 20 W  
Formation Test No. 1 Interval Tested From 4,070 ft. to 4,164 ft. Total Depth 4,164 ft.  
Formation Cherokee

	<u>MUD PIT</u>	<u>RECOVERY</u>	<u>RECOVERY</u>
Viscosity	<u>48</u> CP	<u>--</u> CP	
Weight	<u>9.2</u>	<u>--</u>	
Water Loss	<u>9.6</u> CC	<u>--</u> CC	
PH Factor	<u>10.5</u>	<u>--</u>	<u>Water</u> <u>7.0</u>

	<u>RESISTIVITY</u>	<u>CHLORIDE CONTENT</u>
Recovery Water	<u>.20 @ 60 °F.</u>	<u>42,000 ppm</u>
Recovery Mud	<u>-- @ -- °F.</u>	<u>-- ppm</u>
Recovery Mud Filtrate	<u>-- @ -- °F.</u>	<u>-- ppm</u>
Mud Pit Sample	<u>1.70 @ 50 °F.</u>	<u>4,400 ppm</u>
Mud Pit Sample Filtrate	<u>2.01 @ 56 °F.</u>	<u>3,600 ppm</u>

Sample Taken By ROGER D. FRIEDLY

Witness By KEVIN KESSLER

Remarks Pit filtrate triton dish chlorides were 2,000 Ppm  
Recovery water dish chlorides were 40,000 Ppm

## GENERAL INFORMATION

### Client Information:

Company: MULL DRILLING CO., INC.  
Contact: ERNIE MORRISON  
Phone: Fax: e-mail:

### Site Information:

Contact: KEVIN KESSLER  
Phone: Fax: e-mail:

### Well Information:

Name: SHOWALTER-BANNISTER #1-33  
Operator: MULL DRILLING CO., INC.  
Location-Downhole: DST #1 CHEROKEE SAND 4,070' - 4,164'  
Location-Surface: SEC 33-18S-20W RUSH COUNTY

### Test Information:

Company: DIAMOND TESTING  
Representative: ROGER D. FRIEDLY  
Supervisor: KEVIN KESSLER  
Test Type: CONVENTIONAL Job Number:  
Test Unit: NO. 1  
Start Date: 2006/11/22 Start Time: 22:55:00  
End Date: 2006/11/23 End Time: 05:19:00  
Report Date: Prepared By:

### Remarks:

Qualified By:

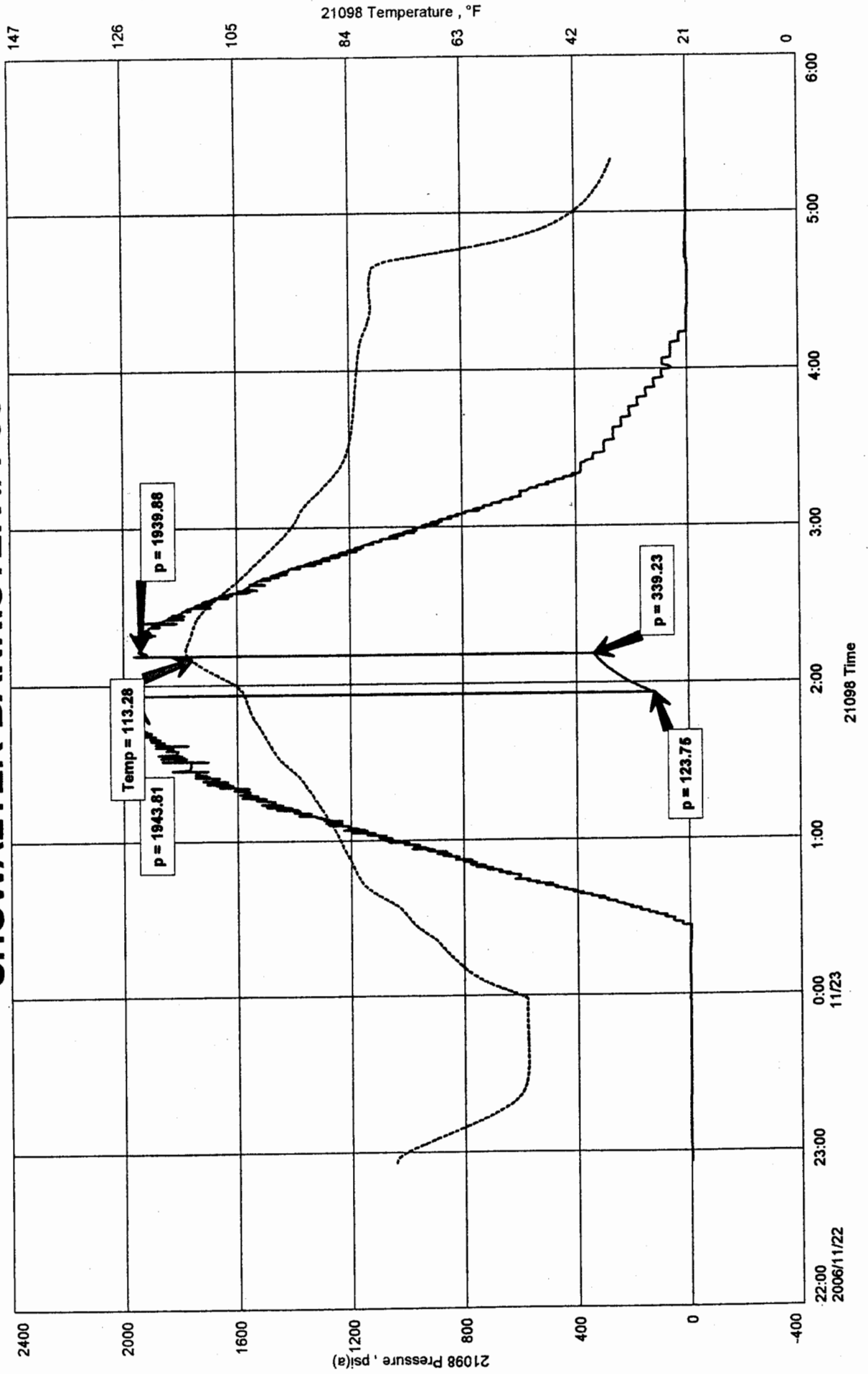
RECOVERED: 226' WM 12% WTR, 88% MUD  
186' MW 21% MUD, 79% WTR  
310' SW  
722' TOTAL FLUID

TOOL SAMPLE: 100% SW WITH GOOD OIL SPECKS

SHOWALTER-BANNISTER #1-33  
Formation: DST #1 CHEROKEE SAND 4,070' - 4,164'  
Pool: WILDCAT

MULL DRILLING CO., INC.  
DST #1 CHEROKEE SAND 4,070' - 4,164'  
Start Test Date: 2006/11/22  
Final Test Date: 2006/11/23

# SHOWALTER-BANNISTER #1-33

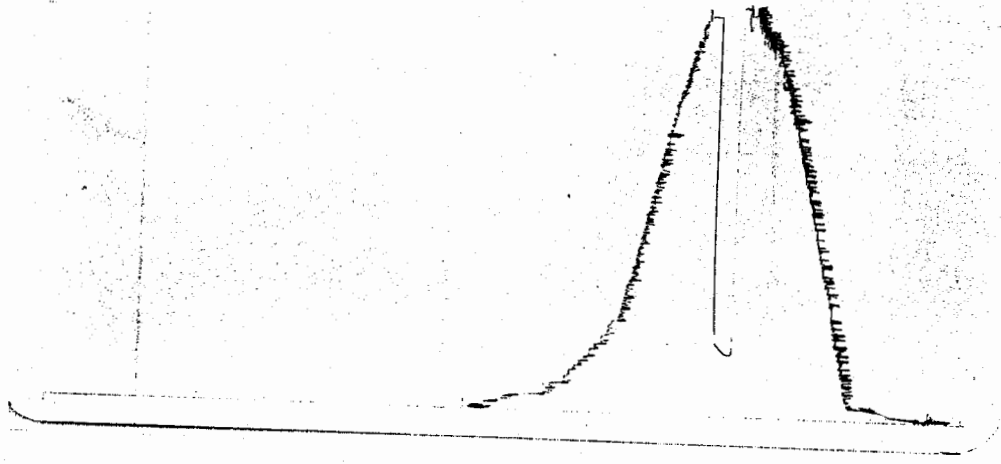


DST # 1 outside 13387

Chero. Snd

4070-4164

Loc 4161



This is an actual photograph of recorder chart.

POINT	PRESSURE		
	Field Reading	Elec. Office Reading	
(A) Initial Hydrostatic Mud .....	1944	1944	PSI
(B) First Initial Flow Pressure.....	124	124	PSI
(C) First Final Flow Pressure .....	339	339	PSI
(D) Initial Closed-in Pressure .....	--	--	PSI
(E) Second Initial Flow Pressure .....	--	--	PSI
(F) Second Final Flow Pressure.....	--	--	PSI
(G) Final Closed-in Pressure.....	--	--	PSI
(H) Final Hydrostatic Mud .....	1940	1940	PSI