



**TRILOBITE TESTING, INC.**

# DRILL STEM TEST REPORT

American Warrior INC  
 3118 Cummings rd  
 Garden City KS, 67846  
 ATTN: Jason Alm

**30-18s-21w Ness KS**  
**Pablo #5-30**  
 Job Ticket: 51563      **DST#: 1**  
 Test Start: 2012.12.10 @ 23:26:00

## GENERAL INFORMATION:

Formation: **Miss**  
 Deviated: No Whipstock: ft (KB)  
 Time Tool Opened: 01:12:15  
 Time Test Ended: 06:53:00  
 Interval: **4206.00 ft (KB) To 4216.00 ft (KB) (TVD)**  
 Total Depth: 4216.00 ft (KB) (TVD)  
 Hole Diameter: 7.88 inches Hole Condition: Fair  
 Test Type: Conventional Bottom Hole (Initial)  
 Tester: Cody Bloedorn  
 Unit No: 42  
 Reference Elevations: 2128.00 ft (KB)  
 2122.00 ft (CF)  
 KB to GR/CF: 6.00 ft

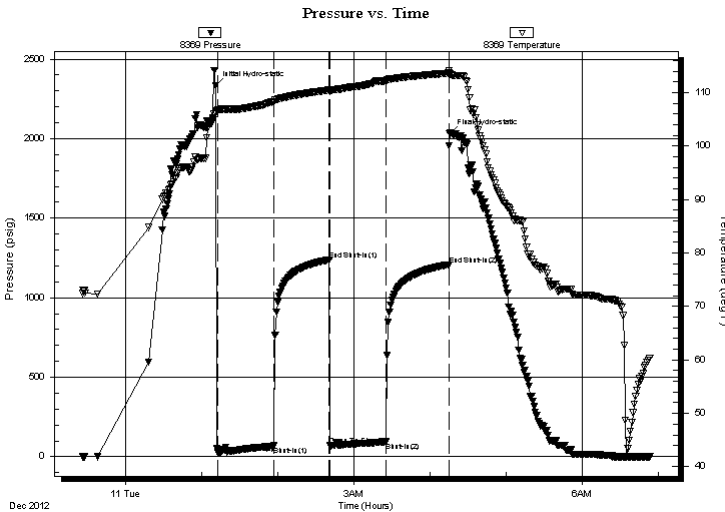
## Serial #: 8369

Inside

Press @ Run Depth: 93.55 psig @ 4207.00 ft (KB)      Capacity: 8000.00 psig  
 Start Date: 2012.12.10      End Date: 2012.12.11      Last Calib.: 2012.12.11  
 Start Time: 23:26:05      End Time: 06:52:59      Time On Btm: 2012.12.11 @ 01:10:45  
 Time Off Btm: 2012.12.11 @ 04:15:15

TEST COMMENT: 45 - IF- 8 1/2" blow  
 45 - IS- Surface blow  
 45 - FF- 5" blow  
 45 - FS- Surface blow

## PRESSURE SUMMARY



Time (Min.)	Pressure (psig)	Temp (deg F)	Annotation
0	2331.33	106.30	Initial Hydro-static
2	24.39	106.66	Open To Flow (1)
46	66.08	108.30	Shut-In(1)
90	1238.00	110.48	End Shut-In(1)
90	70.73	110.20	Open To Flow (2)
135	93.55	112.21	Shut-In(2)
184	1207.91	113.63	End Shut-In(2)
185	2029.57	113.53	Final Hydro-static

## Recovery

Length (ft)	Description	Volume (bbl)
62.00	GHOCM, 10%G, 30%O, 60%M	0.30
62.00	GHOCM, 20%M, 40%G, 40%O	0.30
62.00	GMO, 5%G, 5%M, 90%O	0.87
31.00	GHOCM, 5%M, 40%O, 55%G	0.43
0.00	186' of G.I.P.	0.00

## Gas Rates

Choke (inches)	Pressure (psig)	Gas Rate (Mcf/d)



**TRILOBITE  
TESTING, INC.**

# DRILL STEM TEST REPORT

**FLUID SUMMARY**

American Warrior INC

**30-18s-21w Ness KS**

3118 Cummings rd  
Garden City KS, 67846

**Pablo #5-30**

Job Ticket: 51563

**DST#: 1**

ATTN: Jason Alm

Test Start: 2012.12.10 @ 23:26:00

## Mud and Cushion Information

Mud Type: Gel Chem

Cushion Type:

Oil API:

deg API

Mud Weight: 9.00 lb/gal

Cushion Length:

ft

Water Salinity:

ppm

Viscosity: 48.00 sec/qt

Cushion Volume:

bbf

Water Loss: 8.79 in<sup>3</sup>

Gas Cushion Type:

Resistivity: ohm.m

Gas Cushion Pressure:

psig

Salinity: 8600.00 ppm

Filter Cake: inches

## Recovery Information

Recovery Table

Length ft	Description	Volume bbf
62.00	GHOCM, 10%G, 30%O, 60%M	0.305
62.00	GHOCM, 20%M, 40%G, 40%O	0.305
62.00	GMO, 5%G, 5%M, 90%O	0.870
31.00	GHOCM, 5%M, 40%O, 55%G	0.435
0.00	186' of G.I.P.	0.000

Total Length: 217.00 ft

Total Volume: 1.915 bbf

Num Fluid Samples: 0

Num Gas Bombs: 0

Serial #:

Laboratory Name:

Laboratory Location:

Recovery Comments:

