



**TRILOBITE  
TESTING, INC**

# DRILL STEM TEST REPORT

American Warrior Inc  
P O Box 399  
Garden City Ks 67846  
ATTN: Scott Corsair

**Ryersee #4-33**  
**33-18s-21w Ness**  
Job Ticket: 40144      **DST#: 1**  
Test Start: 2010.09.19 @ 14:59:03

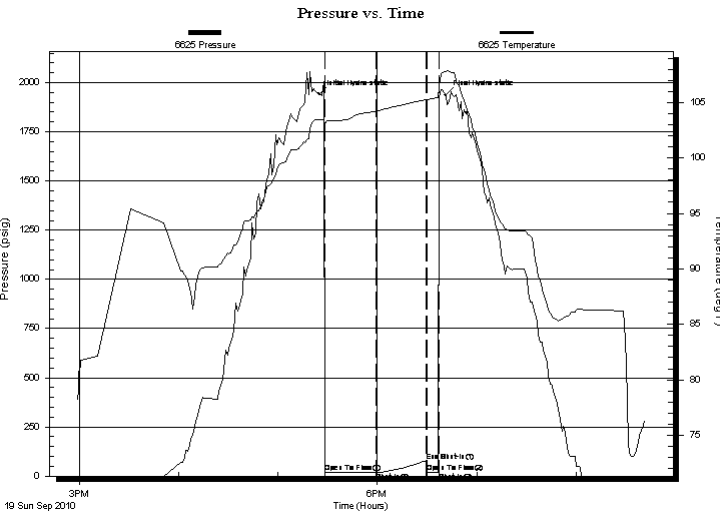
## GENERAL INFORMATION:

Formation: **Cher Sd "A"**  
 Deviated: No Whipstock: ft (KB)      Test Type: Conventional Bottom Hole  
 Time Tool Opened: 17:28:28      Tester: Ray Schwager  
 Time Test Ended: 20:41:57      Unit No: 42  
 Interval: **4101.00 ft (KB) To 4120.00 ft (KB) (TVD)**      Reference Elevations: 2114.00 ft (KB)  
 Total Depth: 4120.00 ft (KB) (TVD)      2108.00 ft (CF)  
 Hole Diameter: 7.85 inches Hole Condition: Fair      KB to GR/CF: 6.00 ft

## Serial #: 6625 Inside

Press @ Run Depth: 18.36 psig @ 4102.00 ft (KB)      Capacity: 8000.00 psig  
 Start Date: 2010.09.19      End Date: 2010.09.19      Last Calib.: 2010.09.19  
 Start Time: 14:59:03      End Time: 20:41:57      Time On Btm: 2010.09.19 @ 17:24:58  
 Time Off Btm: 2010.09.19 @ 18:41:28

TEST COMMENT: IFP- surface bl  
FFP-no bl



## PRESSURE SUMMARY

Time (Min.)	Pressure (psig)	Temp (deg F)	Annotation
0	1940.69	103.48	Initial Hydro-static
4	19.33	103.14	Open To Flow (1)
35	18.36	104.23	Shut-In(1)
65	74.26	105.26	End Shut-In(1)
65	18.63	105.27	Open To Flow (2)
72	19.16	105.46	Shut-In(2)
77	1938.35	107.81	Final Hydro-static

## Recovery

Length (ft)	Description	Volume (bbl)
2.00	Mud w/show of oil	0.01

## Gas Rates

Choke (inches)	Pressure (psig)	Gas Rate (Mcf/d)



**TRILOBITE**  
TESTING, INC

# DRILL STEM TEST REPORT

**FLUID SUMMARY**

American Warrior Inc  
P O Box 399  
Garden City Ks 67846  
ATTN: Scott Corsair

**Ryersee #4-33**  
**33-18s-21w Ness**  
Job Ticket: 40144      **DST#: 1**  
Test Start: 2010.09.19 @ 14:59:03

## Mud and Cushion Information

Mud Type: Gel Chem	Cushion Type:	Oil API:	deg API
Mud Weight: 9.00 lb/gal	Cushion Length: ft	Water Salinity:	ppm
Viscosity: 43.00 sec/qt	Cushion Volume: bbl		
Water Loss: 8.75 in <sup>3</sup>	Gas Cushion Type:		
Resistivity: ohm.m	Gas Cushion Pressure: psig		
Salinity: 4700.00 ppm			
Filter Cake: 1.00 inches			

## Recovery Information

Recovery Table

Length ft	Description	Volume bbl
2.00	Mud w/show of oil	0.010

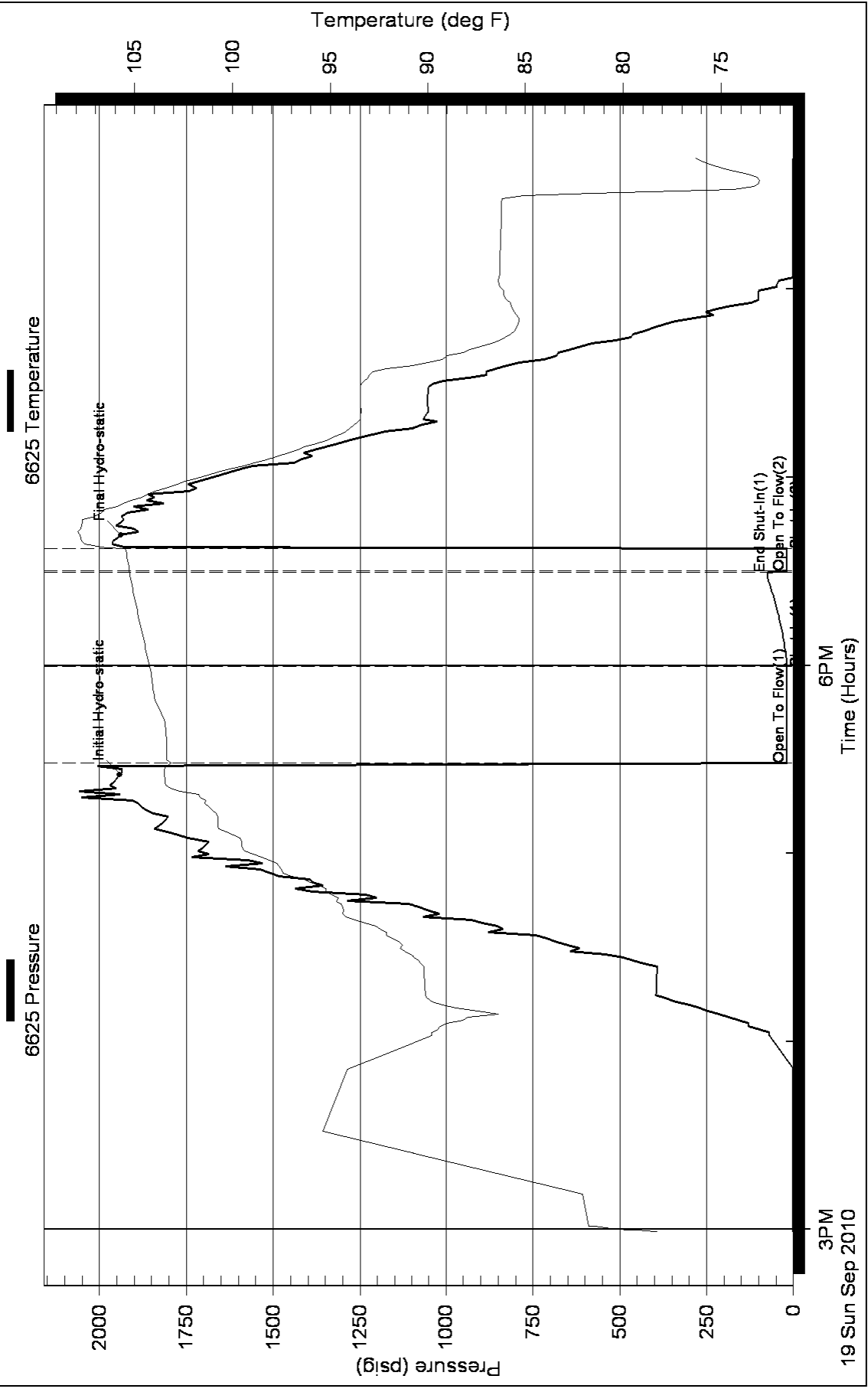
Total Length: 2.00 ft      Total Volume: 0.010 bbl

Num Fluid Samples: 0      Num Gas Bombs: 0      Serial #:

Laboratory Name:      Laboratory Location:

Recovery Comments:

### Pressure vs. Time





**TRILOBITE TESTING, INC**

# DRILL STEM TEST REPORT

American Warrior Inc  
 P O Box 399  
 Garden City Ks 67846  
 ATTN: Scott Corsair

**Ryersee #4-33**  
**33-18s-21w Ness**  
 Job Ticket: 40145 **DST#: 2**  
 Test Start: 2010.09.20 @ 04:10:56

## GENERAL INFORMATION:

Formation: **Cher Sd "B"**  
 Deviated: No Whipstock: ft (KB)  
 Test Type: Conventional Bottom Hole  
 Time Tool Opened: 06:09:21  
 Tester: Ray Schwager  
 Time Test Ended: 09:59:20  
 Unit No: 42  
 Interval: **4100.00 ft (KB) To 4165.00 ft (KB) (TVD)**  
 Reference Elevations: 2114.00 ft (KB)  
 Total Depth: 4165.00 ft (KB) (TVD) 2108.00 ft (CF)  
 Hole Diameter: 7.85 inches Hole Condition: Fair  
 KB to GR/CF: 6.00 ft

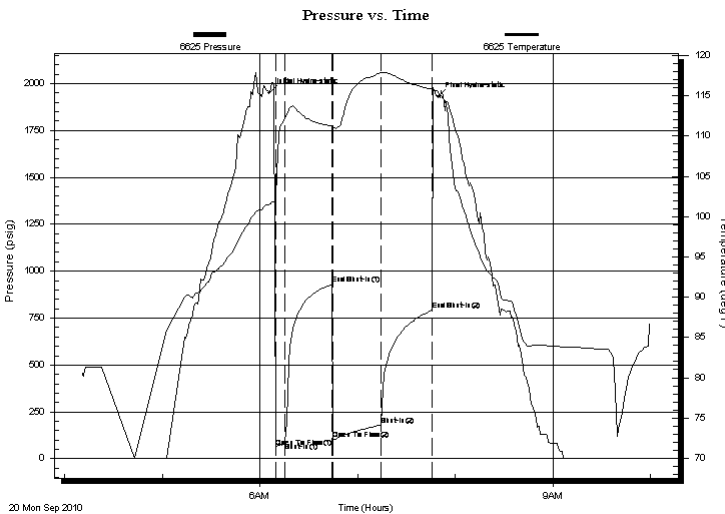
## Serial #: 6625

Inside

Press @ Run Depth: 180.74 psig @ 4104.00 ft (KB) Capacity: 8000.00 psig  
 Start Date: 2010.09.20 End Date: 2010.09.20 Last Calib.: 2002.08.30  
 Start Time: 04:10:56 End Time: 09:59:20 Time On Btm: 2010.09.20 @ 06:05:51  
 Time Off Btm: 2010.09.20 @ 07:49:21

TEST COMMENT: IFP-w k to strg in 5 min  
 ISIP-surface bl bk  
 FFP-w k to strg in 12 min  
 FSIP-no bl bk

## PRESSURE SUMMARY



Time (Min.)	Pressure (psig)	Temp (deg F)	Annotation
0	1951.62	101.53	Initial Hydro-static
4	60.28	102.22	Open To Flow (1)
10	86.73	112.20	Shut-In(1)
39	929.21	111.21	End Shut-In(1)
39	103.74	111.02	Open To Flow (2)
69	180.74	117.81	Shut-In(2)
100	790.34	115.77	End Shut-In(2)
104	1928.47	115.49	Final Hydro-static

## Recovery

Length (ft)	Description	Volume (bbl)
0.00	80'GIP	0.00
10.00	CO	0.05
92.00	OCM10%O10%W80%M	0.45
124.00	SOCMW 2%O30%M68%W	1.58
124.00	Water	1.74

## Gas Rates

Choke (inches)	Pressure (psig)	Gas Rate (Mcf/d)



**TRILOBITE  
TESTING, INC**

# DRILL STEM TEST REPORT

## FLUID SUMMARY

American Warrior Inc  
P O Box 399  
Garden City Ks 67846  
ATTN: Scott Corsair

**Ryersee #4-33**  
**33-18s-21w Ness**  
Job Ticket: 40145      **DST#: 2**  
Test Start: 2010.09.20 @ 04:10:56

### Mud and Cushion Information

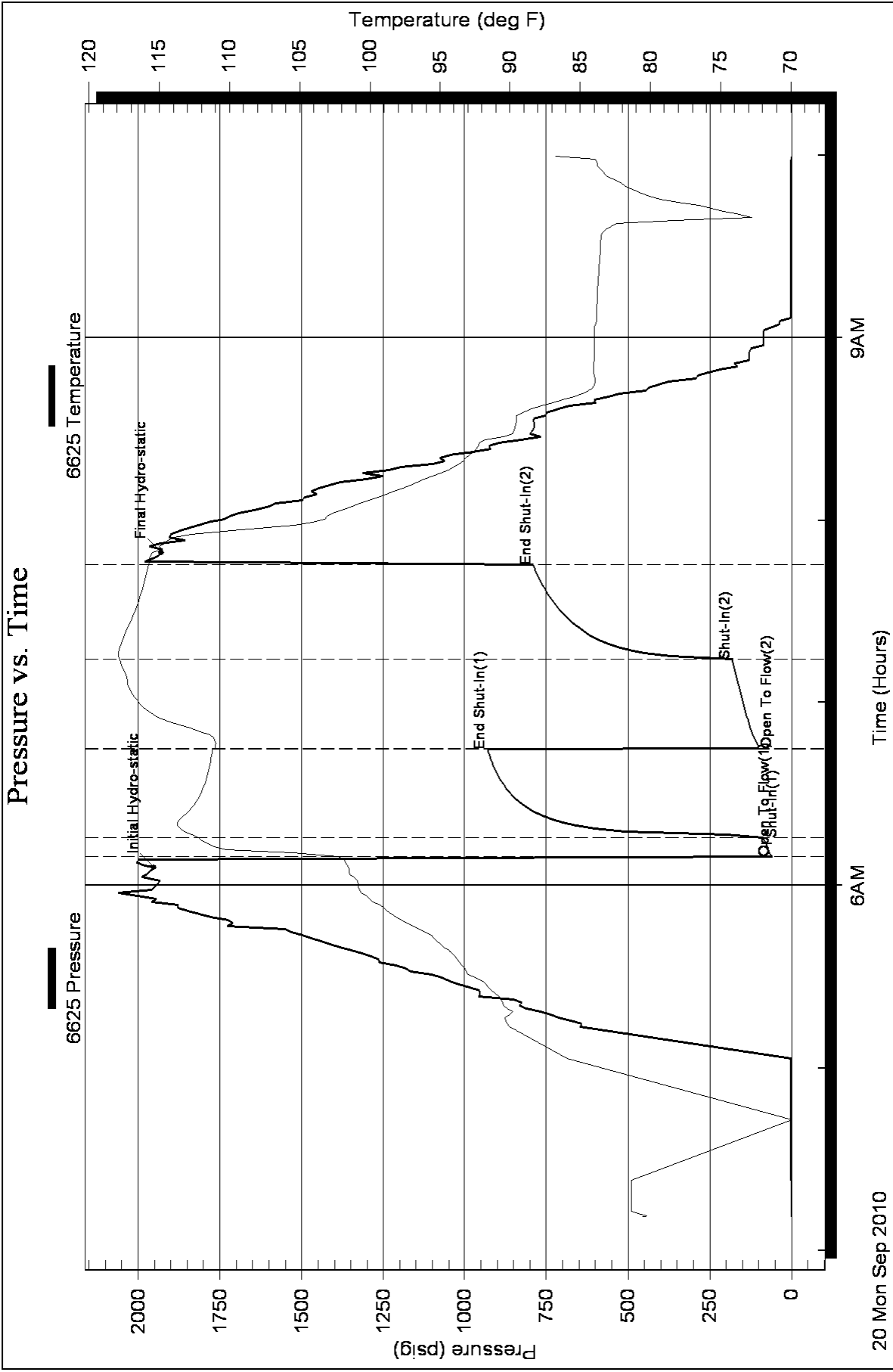
Mud Type: Gel Chem	Cushion Type:	Oil API: 39 deg API
Mud Weight: 9.00 lb/gal	Cushion Length: ft	Water Salinity: 20000 ppm
Viscosity: 43.00 sec/qt	Cushion Volume: bbl	
Water Loss: 8.69 in <sup>3</sup>	Gas Cushion Type:	
Resistivity: ohm.m	Gas Cushion Pressure: psig	
Salinity: 4700.00 ppm		
Filter Cake: 1.00 inches		

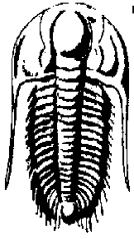
### Recovery Information

Recovery Table

Length ft	Description	Volume bbl
0.00	80'GIP	0.000
10.00	CO	0.049
92.00	OCM10%O10%W80%M	0.452
124.00	SOCMW 2%O30%M68%W	1.575
124.00	Water	1.739

Total Length: 350.00 ft      Total Volume: 3.815 bbl  
 Num Fluid Samples: 0      Num Gas Bombs: 0      Serial #:  
 Laboratory Name:      Laboratory Location:  
 Recovery Comments: RW .3 @ 79F





**TRILOBITE TESTING, INC**

# DRILL STEM TEST REPORT

American Warrior Inc  
 P O Box 399  
 Garden City Ks 67846  
 ATTN: Scott Corsair

**Ryersee #4-33**  
**33-18s-21w Ness**  
 Job Ticket: 40146 **DST#: 3**  
 Test Start: 2002.09.20 @ 18:39:56

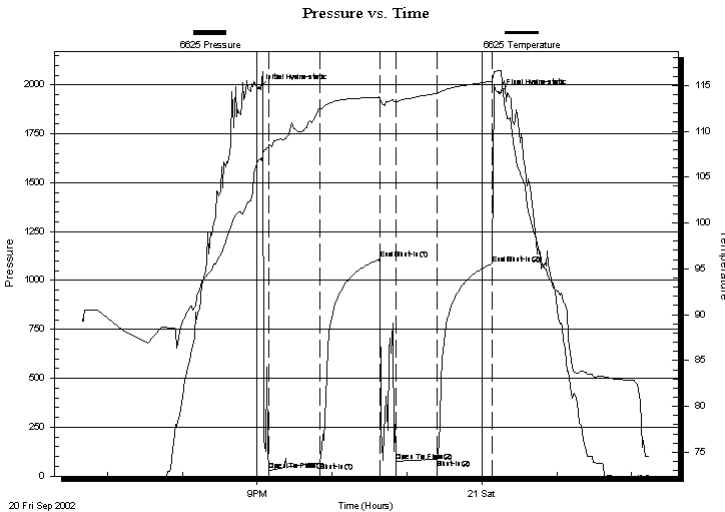
## GENERAL INFORMATION:

Formation: **Miss**  
 Deviated: No Whipstock: ft (KB)  
 Time Tool Opened: 21:08:56  
 Time Test Ended: 02:14:56  
 Interval: **4190.00 ft (KB) To 4197.00 ft (KB) (TVD)**  
 Total Depth: 4197.00 ft (KB) (TVD)  
 Hole Diameter: 7.85 inches Hole Condition: Fair  
 Test Type: Conventional Bottom Hole  
 Tester: Ray Schwager  
 Unit No: 42  
 Reference Elevations: 2114.00 ft (KB)  
 2108.00 ft (CF)  
 KB to GR/CF: 6.00 ft

**Serial #: 6625 Inside**  
 Press @ Run Depth: 85.86 psig @ 4191.00 ft (KB) Capacity: 8000.00 psig  
 Start Date: 2002.09.20 End Date: 2002.09.21 Last Calib.: 2002.08.31  
 Start Time: 18:40:01 End Time: 02:14:55 Time On Btm: 2002.09.20 @ 21:01:26  
 Time Off Btm: 2002.09.21 @ 00:13:56

TEST COMMENT: IFP-w k bl thru-out 1/2" to 2" bl  
 ISIP-no bl bk  
 FFP-w k bl thr-out 1/4" to 2" bl  
 FSIP-no bl bk

## PRESSURE SUMMARY



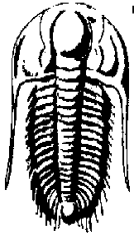
Time (Min.)	Pressure (psig)	Temp (deg F)	Annotation
0	1981.91	106.88	Initial Hydro-static
8	28.35	108.17	Open To Flow (1)
49	68.07	112.47	Shut-In(1)
97	1108.56	113.72	End Shut-In(1)
110	75.09	113.22	Open To Flow (2)
143	85.86	114.16	Shut-In(2)
187	1087.31	115.47	End Shut-In(2)
193	1956.06	116.59	Final Hydro-static

## Recovery

Length (ft)	Description	Volume (bbl)
5.00	OCMW 20%O10%M70%W	0.02
120.00	MGO 5%G10%M85%O	0.64
30.00	OCM 15%O85%M	0.42
40.00	CO	0.56

## Gas Rates

	Choke (inches)	Pressure (psig)	Gas Rate (Mcf/d)



**TRILOBITE  
TESTING, INC**

# DRILL STEM TEST REPORT

**FLUID SUMMARY**

American Warrior Inc  
P O Box 399  
Garden City Ks 67846  
ATTN: Scott Corsair

**Ryersee #4-33**  
**33-18s-21w Ness**  
Job Ticket: 40146      **DST#: 3**  
Test Start: 2002.09.20 @ 18:39:56

## Mud and Cushion Information

Mud Type: Gel Chem	Cushion Type:	Oil API: 40 deg API
Mud Weight: 9.00 lb/gal	Cushion Length: ft	Water Salinity: ppm
Viscosity: 51.00 sec/qt	Cushion Volume: bbl	
Water Loss: 9.57 in <sup>3</sup>	Gas Cushion Type:	
Resistivity: ohm.m	Gas Cushion Pressure: psig	
Salinity: 5400.00 ppm		
Filter Cake: 1.00 inches		

## Recovery Information

Recovery Table

Length ft	Description	Volume bbl
5.00	OCMW 20%O10%M70%W	0.025
120.00	MGO 5%G10%M85%O	0.636
30.00	OCM 15%O85%M	0.421
40.00	CO	0.561

Total Length: 195.00 ft      Total Volume: 1.643 bbl  
 Num Fluid Samples: 0      Num Gas Bombs: 0      Serial #:  
 Laboratory Name:      Laboratory Location:  
 Recovery Comments: RW .35@75F

