

**TRILOBITE
TESTING, INC**

DRILL STEM TEST REPORT

American Warrior, Inc.

Seltman #6

P.O.Box 399
Garden City, Ks 67846

24/18S/21W-Ness

Job Ticket: 42891

DST#: 1

ATTN: Jason Alm

Test Start: 2011.05.26 @ 15:28:05

GENERAL INFORMATION:

Formation: **Cherokee "A" Sand**

Deviated: No Whipstock: ft (KB)

Time Tool Opened: 17:21:05

Time Test Ended: 22:09:05

Test Type: Conventional Bottom Hole

Tester: Dustin Rash

Unit No: 38

Interval: **4050.00 ft (KB) To 4070.00 ft (KB) (TVD)**

Total Depth: 4070.00 ft (KB) (TVD)

Hole Diameter: 7.88 inches Hole Condition: Poor

Reference Elevations: 2103.00 ft (KB)

2095.00 ft (CF)

KB to GRV/CF: 8.00 ft

Serial #: **8354** Inside

Press@RunDepth: 48.53 psig @ 4052.00 ft (KB)

Start Date: 2011.05.26

End Date: 2011.05.26

Start Time: 15:38:05

End Time: 22:09:05

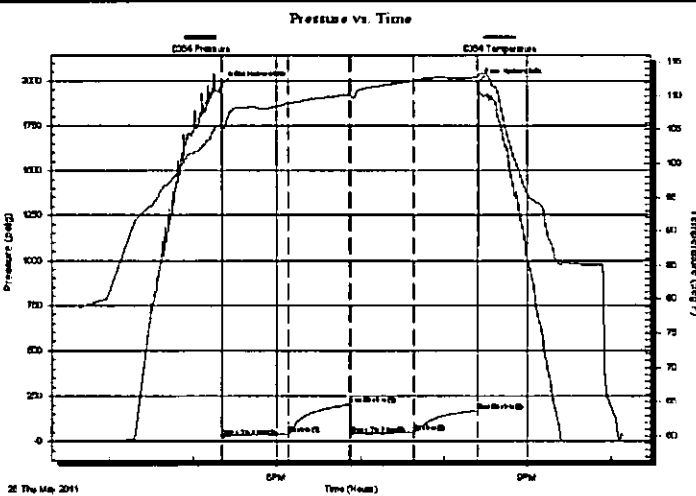
Capacity: 8000.00 psig

Last Calib.: 2011.05.26

Time On Btm: 2011.05.26 @ 17:20:55

Time Off Btm: 2011.05.26 @ 20:24:35

TEST COMMENT: IF-Very weak building blow . Built to 2&1/4 inches.
IS-No Return.
FF-Very weak building blow . Built to 1&1/4 inches.
FS-No Return.



PRESSURE SUMMARY

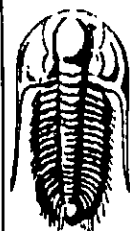
Time (Min.)	Pressure (psig)	Temp (deg F)	Annotation
0	1975.44	105.80	Initial Hydro-static
1	22.88	105.06	Open To Flow (1)
48	40.19	108.99	Shut-In(1)
92	203.33	110.18	End Shut-In(1)
93	41.48	110.03	Open To Flow (2)
138	48.53	112.24	Shut-In(2)
184	167.81	112.73	End Shut-In(2)
184	1990.95	113.25	Final Hydro-static

Recovery

Length (ft)	Description	Volume (bbl)
62.00	75%Mud/15%Water/10%Oil	0.59
8.00	70%Oil/30%Gas	0.11

Gas Rates

	Choke (Inches)	Pressure (psig)	Gas Rate (Mcf/d)



**TRILOBITE
TESTING, INC**

DRILL STEM TEST REPORT

FLUID SUMMARY

American Warrior, Inc.

Seltman #6

P.O.Box 399
Garden City, Ks 67846

24/18S/21W-Ness

Job Ticket: 42891

DST#: 1

ATTN: Jason Alm

Test Start: 2011.05.26 @ 15:28:05

Mud and Cushion Information

Mud Type: Gel Chem

Cushion Type:

Oil API:

40 deg API

Mud Weight: 9.00 lb/gal

Cushion Length:

ft

Water Salinity:

22000 ppm

Viscosity: 52.00 sec/qt

Cushion Volume:

bbbl

Water Loss: 8.78 in³

Gas Cushion Type:

Resistivity: 0.35 ohm.m

Gas Cushion Pressure:

psig

Salinity: 6100.00 ppm

Filter Cake: inches

Recovery Information

Recovery Table

Length ft	Description	Volume bbbl
62.00	75%Mud/15%Water/10%Oil	0.587
8.00	70%Oil/30%Gas	0.112

Total Length: 70.00 ft

Total Volume: 0.699 bbl

Num Fluid Samples: 0

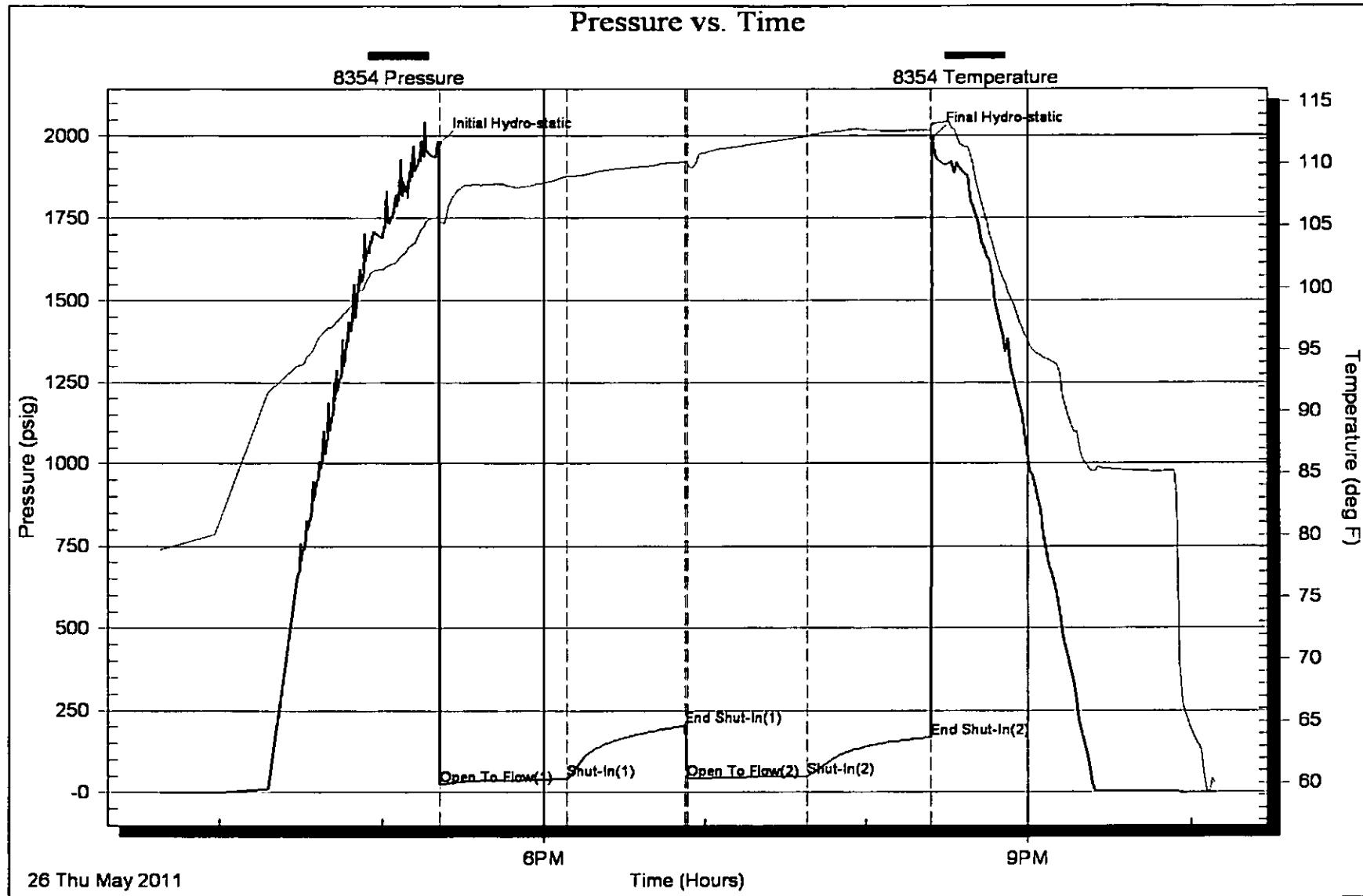
Num Gas Bombs: 0

Serial #:

Laboratory Name:

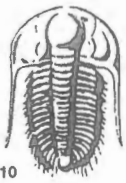
Laboratory Location:

Recovery Comments:



26 Thu May 2011

Time (Hours)



TRILOBITE TESTING INC.

P.O. Box 1733 • Hays, Kansas 67601

Test Ticket

NO. 042891 15810

Well Name & No. Selman #6 Test No. 1 Date 5-26-11
 Company American Warrior, Inc. Elevation 2103 KB 2095 GL
 Address P.O. Box 399 Garden City, KS 67846
 Co. Rep / Geo. Jason Alm Rig Discovery 3
 Location: Sec. 24 Twp. 18S Rge. 21W Co. Ness State KS

Interval Tested 4050-4070 Zone Tested Cherokee "A" Sand
 Anchor Length 20' Drill Pipe Run 4029 Mud Wt. 9.1
 Top Packer Depth 4045 Drill Collars Run 31 Vis 52
 Bottom Packer Depth 4050 Wt. Pipe Run 0 WL 8.8
 Total Depth 4070 Chlorides 6100 ppm System LCM Ta

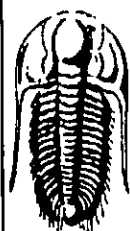
Blow Description IF - Very Weak building blow, Built to 2 1/4 inches.
ISF - No Return.
FF - Very Weak building blow, Built to 1 1/4 inches.
FST - No Return.

Rec	Feet of	%gas	%oil	%water	%mud
<u>8</u>	<u>Gassy Oil</u>	<u>30</u>	<u>70</u>		
<u>62</u>	<u>M/W/O</u>		<u>10</u>	<u>15</u>	<u>75</u>
Rec	Feet of	%gas	%oil	%water	%mud
Rec	Feet of	%gas	%oil	%water	%mud

Rec Total 70 BHT 113 Gravity 40 API RW 351 @ 62° F Chlorides 22000 ppm
 (A) Initial Hydrostatic 1975 Test 1225' T-On Location 1430
 (B) First Initial Flow 23 Jars 250' T-Started 1535
 (C) First Final Flow 40 Safety Joint 75' T-Open 1721
 (D) Initial Shut-In 203 Circ Sub _____ T-Pulled 2023
 (E) Second Initial Flow 41 Hourly Standby _____ T-Out 2200
 (F) Second Final Flow 49 Mileage 46X2 92RT 128.0 Comments Bar-1528
 (G) Final Shut-In 168 Sampler _____
 (H) Final Hydrostatic 1991 Straddle _____ Ruined Shale Packer _____
 Shale Packer _____ Ruined Packer _____
 Extra Packer _____ Extra Copies _____
 Extra Recorder _____

Initial Open 45
 Initial Shut-In 45
 Final Flow 45
 Final Shut-In 45
 Sub Total 0
 Total 167820
 Sub Total 167820 MP/DST Disc't _____
 Approved By _____ Our Representative D. Lash

Trilobite Testing Inc. shall not be liable for damaged of any kind of the property or personnel of the one for whom a test is made, or for any loss suffered or sustained, directly or indirectly, through the use of its equipment, or its statements or opinion concerning the results of any test, tools lost or damaged in the hole shall be paid for at cost by the party for whom the test is made.



**TRILOBITE
TESTING, INC**

DRILL STEM TEST REPORT

American Warrior, Inc.

Seltman #6

P.O.Box 399
Garden City, Ks 67846

24/18S/21W-Ness

Job Ticket: 42892

DST#: 2

ATTN: Jason Alm

Test Start: 2011.05.27 @ 03:29:41

GENERAL INFORMATION:

Formation: **Cherokee**

Deviated: **No** Whipstock: **ft (KB)**

Time Tool Opened: 05:23:41

Time Test Ended: 10:10:41

Test Type: **Conventional Bottom Hole**

Tester: **Dustin Rash**

Unit No: **38**

Interval: **4049.00 ft (KB) To 4082.00 ft (KB) (TVD)**

Reference Elevations: **2103.00 ft (KB)**

Total Depth: **4082.00 ft (KB) (TVD)**

2095.00 ft (CF)

Hole Diameter: **7.88 inches** Hole Condition: **Poor**

KB to GR/CF: **8.00 ft**

Serial #: 8354 **Inside**

Press@RunDepth: **50.46 psig @ 4051.00 ft (KB)**

Capacity: **8000.00 psig**

Start Date: **2011.05.27**

End Date:

2011.05.27

Last Calib.: **2011.05.27**

Start Time: **03:39:41**

End Time:

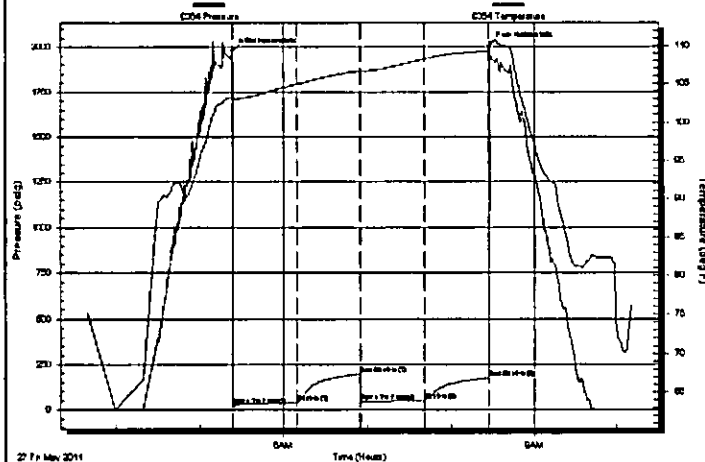
10:10:41

Time On Btrm: **2011.05.27 @ 05:23:31**

Time Off Btrm: **2011.05.27 @ 08:27:41**

TEST COMMENT: IF-Weak building blow . Built to 3&1/4 inches.
ISI-No Return.
FF-Very weak building blow . Built to 1&1/4 inches.
FSI-No Return.

Pressure vs. Time



PRESSURE SUMMARY

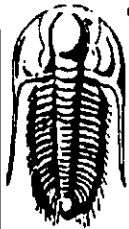
Time (Min.)	Pressure (psig)	Temp (deg F)	Annotation
0	1977.90	103.26	Initial Hydro-static
1	21.85	102.58	Open To Flow (1)
47	39.45	104.96	Shut-In(1)
92	197.83	106.67	End Shut-In(1)
93	43.16	106.66	Open To Flow (2)
138	50.46	108.22	Shut-In(2)
184	175.00	109.32	End Shut-In(2)
185	2004.80	110.35	Final Hydro-static

Recovery

Length (ft)	Description	Volume (bbl)
70.00	70%Mud/20%Water/10%Oil	0.70
8.00	75%Oil/25%Gas	0.11

Gas Rates

	Choke (Inches)	Pressure (psig)	Gas Rate (Mcf/d)



**TRIOBITE
TESTING, INC**

DRILL STEM TEST REPORT

FLUID SUMMARY

American Warrior, Inc.

Seltman #6

P.O.Box 399
Garden City, Ks 67846

24/18S/21W-Ness

Job Ticket: 42892

DST#: 2

ATTN: Jason Alm

Test Start: 2011.05.27 @ 03:29:41

Mud and Cushion Information

Mud Type: Gel Chem

Cushion Type:

Oil API:

40 deg API

Mud Weight: 9.00 lb/gal

Cushion Length:

ft

Water Salinity:

17000 ppm

Viscosity: 52.00 sec/qt

Cushion Volume:

bbl

Water Loss: 8.78 in³

Gas Cushion Type:

Resistivity: 0.39 ohm.m

Gas Cushion Pressure:

psig

Salinity: 6100.00 ppm

Filter Cake: inches

Recovery Information

Recovery Table

Length ft	Description	Volume bbl
70.00	70%Mud/20%Water/10%Oil	0.700
8.00	75%Oil/25%Gas	0.112

Total Length: 78.00 ft

Total Volume: 0.812 bbl

Num Fluid Samples: 0

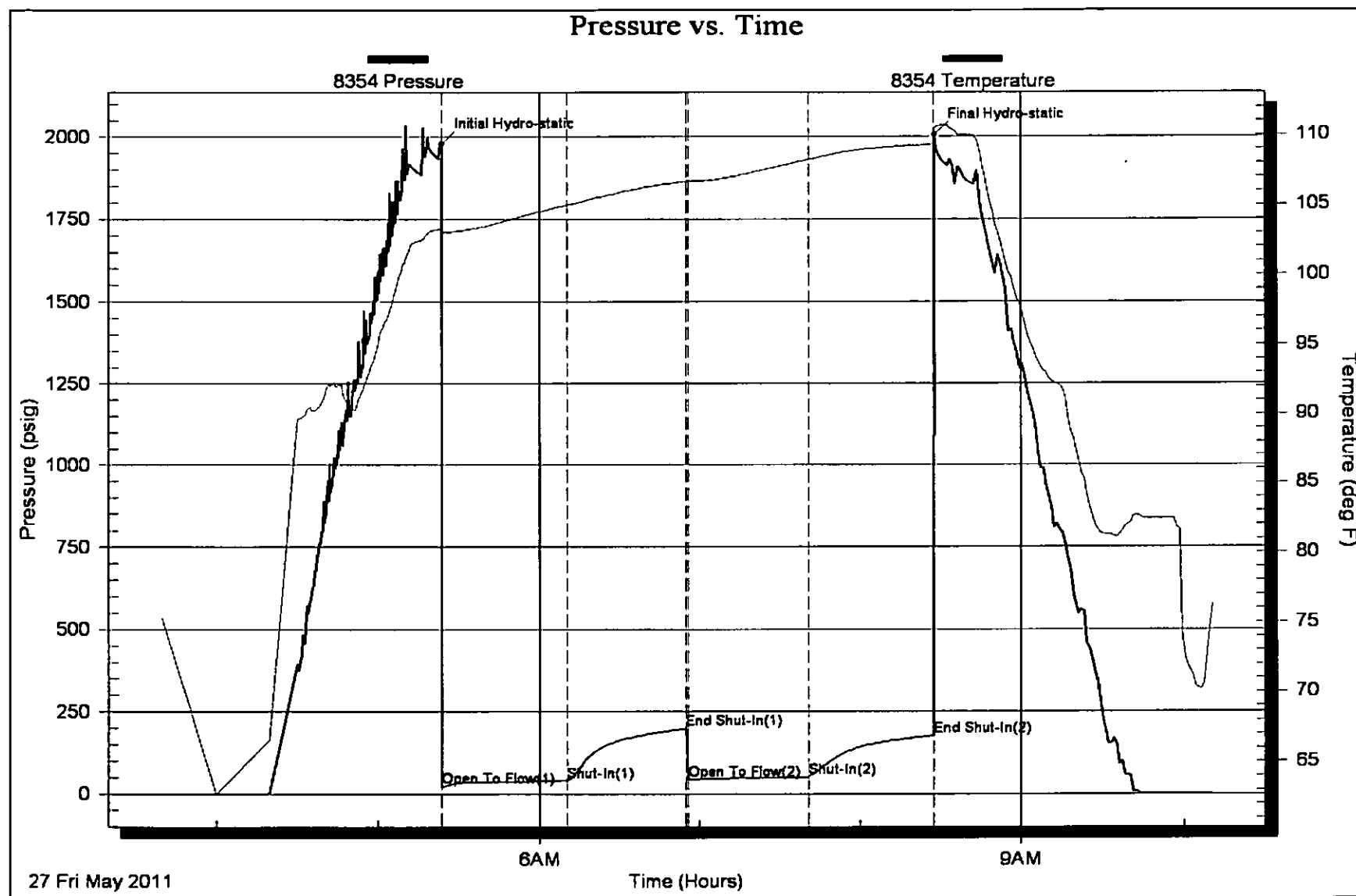
Num Gas Bombs: 0

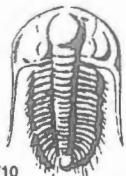
Serial #:

Laboratory Name:

Laboratory Location:

Recovery Comments:





TRILOBITE TESTING INC.

P.O. Box 1733 • Hays, Kansas 67601

Test Ticket

NO. 042892

MAY 31 2011

4/10

Well Name & No. Seltman #6 Test No. 2 Date 5-27-11
 Company American Warrior, Inc. Elevation 2103 KB 2095 GL
 Address P.O. Box 399 Garden City, KS 67846
 Co. Rep / Geo. Jason Alm Rig Discovery 3
 Location: Sec. 24 Twp. 18S Rge. 21W Co. Ness State KS

Interval Tested 4049-4082 Zone Tested Cherokee
 Anchor Length 33' Drill Pipe Run 4022 Mud Wt. 9.1
 Top Packer Depth 4044 Drill Collars Run 31 Vis 52
 Bottom Packer Depth 4049 Wt. Pipe Run 0 WL 8.8
 Total Depth 4082 Chlorides 6100 ppm System LCM Tu

Blow Description IF - Weak building blow. Built to 3/4 inches.
~~IF - No Return.~~
FF - Very weak building blow. Built to 1/4 inches.
~~FF - No Return.~~

Rec	Feet of	%gas	%oil	%water	%mud
<u>8</u>	<u>Gassy Oil</u>	<u>75</u>	<u>75</u>		
<u>70</u>	<u>M/W/O</u>		<u>10</u>	<u>20</u>	<u>70</u>
Rec	Feet of	%gas	%oil	%water	%mud
Rec	Feet of	%gas	%oil	%water	%mud

Rec Total 78 BHT 109 Gravity 40 API RW 386 @ 75 ° F Chlorides 17000 ppm

- (A) Initial Hydrostatic 1978
- (B) First Initial Flow 22
- (C) First Final Flow 39
- (D) Initial Shut-In 198
- (E) Second Initial Flow 43
- (F) Second Final Flow 50
- (G) Final Shut-In 175
- (H) Final Hydrostatic 2005

- Test 1225'
- Jars 250'
- Safety Joint 75'
- Circ Sub
- Hourly Standby
- Mileage 46x2 95-12850
- Sampler
- Straddle
- Shale Packer
- Extra Packer
- Extra Recorder
- Day Standby
- Accessibility

- T-On Location 0300
- T-Started 0340
- T-Open 0555
- T-Pulled 0855
- T-Out 1015
- Comments BHT-0330

Initial Open 45
 Initial Shut-In 45
 Final Flow 45
 Final Shut-In 45

- Ruined Shale Packer
- Ruined Packer
- Extra Copies
- Sub Total 0
- Total 1642 1678 20
- MP/DST Disc't
- Sub Total 1642 1678 20

Approved By _____

Our Representative D. Rosh

Trilobite Testing Inc. shall not be liable for damaged of any kind of the property or personnel of the one for whom a test is made, or for any loss suffered or sustained, directly or indirectly, through the use of its equipment, or its statements or opinion concerning the results of any test, tools lost or damaged in the hole shall be paid for at cost by the party for whom the test is made.