

**CONFIDENTIAL**

**DRILL-STEM TEST DATA**

Well Name	Melody	Test No.	1
Well Number	1	Zone Tested	Fort Scott
Company	Palomino Petroleum Inc.	Date	3/17/04
Comp. Rep.	R. Schreiber	Tester	Don Fabricius
Contractor	Pickrell Drly	Ticket No.	4126
Location	2-18-24	Elevation	

**KCC**  
JUN 24 2004  
**CONFIDENTIAL**

Recorder No. 3088	Clock Range 12	Recorder No. 4377	Clock Range 12
Depth 4307		Depth 4311	
Initial Hydro Mud Press. 2095		Initial Hydro Mud Press. 2095	
Initial Shut-in Press. 848		Initial Shut-in Press. 856	
Initial Flow Press. 70-40		Initial Flow Press. 70-70	
Final Flow Press. 82-82		Final Flow Press. 82-82	
Final Shut-in Press. 730		Final Shut-in Press. 739	
Final Hydro Mud Press. 2095		Final Hydro Mud Press. 2093	
Temperature		Tool Open Before I. S. I. 30	Mins.
Mud Weight 9.3	Viscosity 47.0	Initial Shut-in 30	Mins.
Fluid Loss 8.8		Flow Period 30	Mins.
Interval Tested 4258-4315		Final Shut-in 30	Mins.
Top Packer Depth 4253		Surface Choke Size 1	
Bottom Packer Depth 4258		Bottom Choke Size 3/4	
Total Depth 4315		Main Hole Size 7 7/8	
Drill Pipe Size 4 1/2 XH	Wt. 1660	Rubber Size 6 3/4	
Drill Collar I. D. 2 1/4	Ft. Run 90		
Recovery—Total Feet			
Recovered 165	Feet Of	Mud with a trace of oil on top	
Recovered	Feet Of	90 ft of collars 2 1/4 ID	
Recovered	Feet Of		
Recovered	Feet Of		

Remarks

Very weak blow thru-test

**RECEIVED**

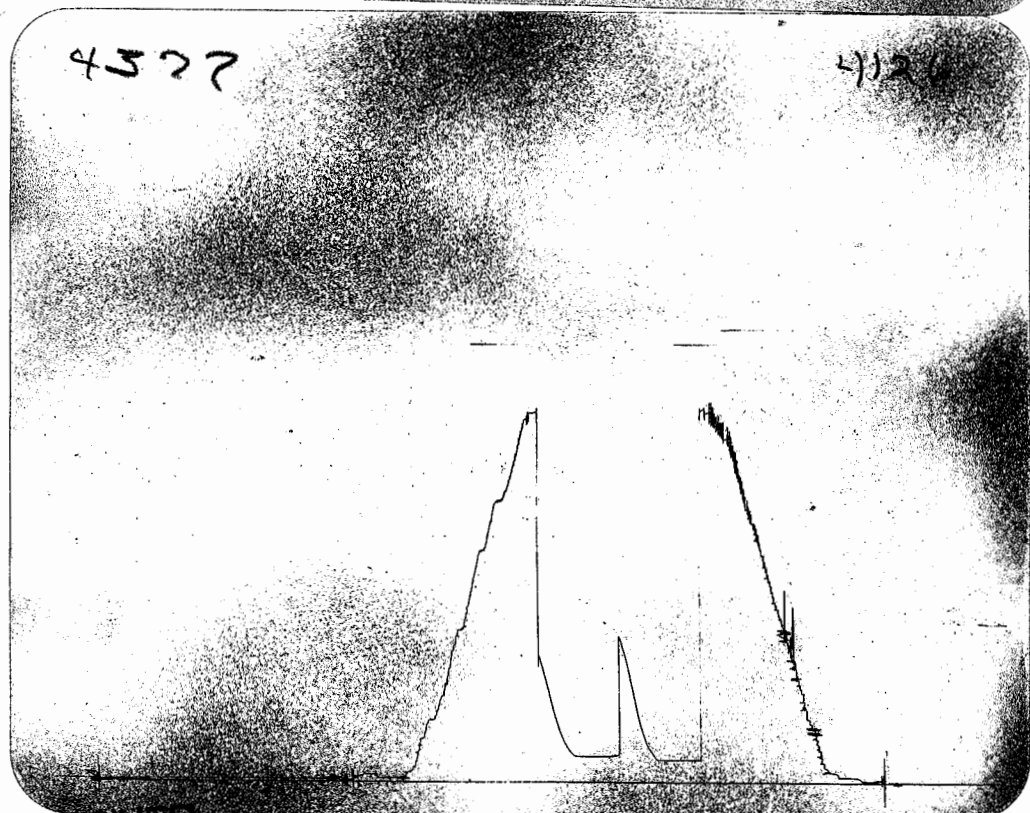
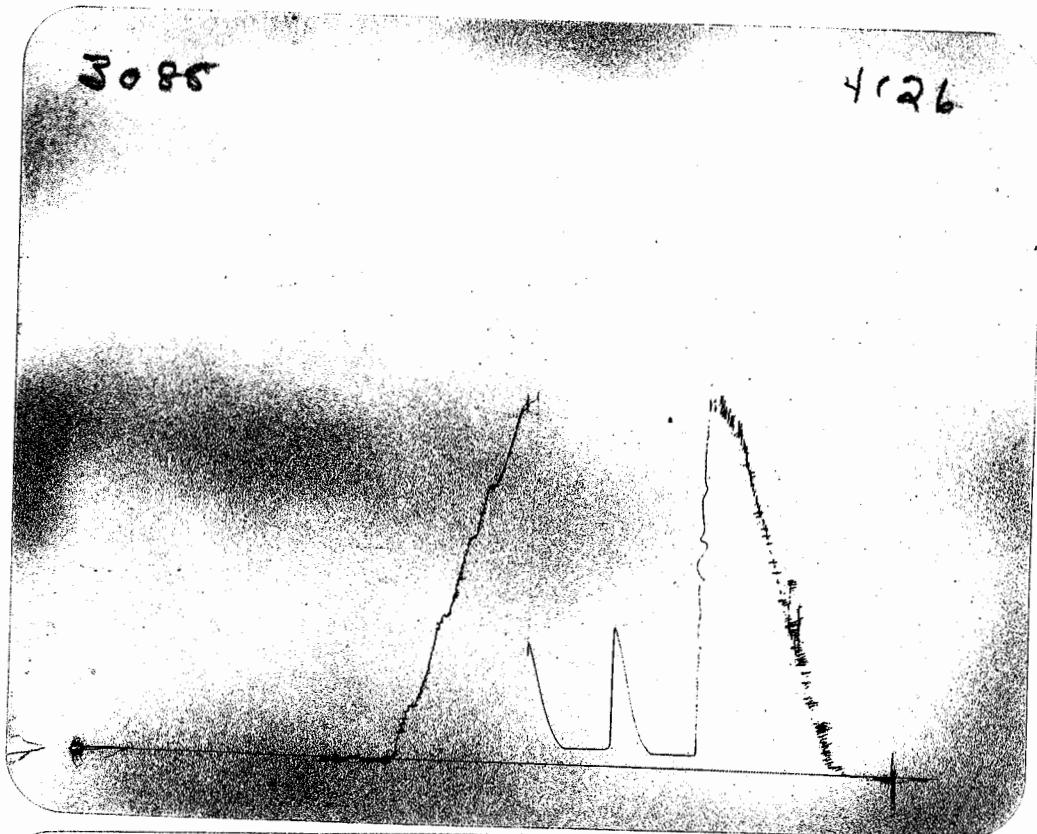
**JUN 28 2004**

**KCC-WICHITA**

**THIS ORDER MUST BE SIGNED BEFORE WORK IS COMMENCED. CONDITIONS:** It is expressly understood and agreed that the above described work shall be done under the exclusive control, direction and supervision of the owner or contractor. As a part of the consideration for this agreement, it is expressly understood and agreed that Arrow Testing Company shall not be responsible for damages or losses of any kind whatsoever occasioned by or incident to the use of the above described Tools, whether run or operated by customer, or by anyone employed directly or indirectly by Arrow Testing Company, nor whether resulting from the acts or omissions of Arrow Testing Company, or any of its agents, servants or employees in any way connected with or related to the use of such Tools.

It is expressly understood and agreed that Arrow Testing Company, shall not be bound by any agreement, not herein contained, and no agent or representative connected with or employed by Arrow Testing Company has authority to alter or extend the terms of this agreement. I have read and understand the terms of this agreement and represent that I am authorized to sign the same as agent of customer.

CONFIDENTIAL



RECEIVED  
JUN 28 2004  
KCC WICHITA

**CONFIDENTIAL**

**DRILL-STEM TEST DATA**

Well Name	Melody	Test No.	2
Well Number	1	Zone Tested	Sand
Company	Palomino Petroleum Inc.	Date	3/18/04
Comp. Rep.	R Schreiber	Tester	Don Fabricius
Contractor	Pickrell Drly	Ticket No.	4127
Location	2-18-24	Elevation	

KCC

JUN 28 2004

CONFIDENTIAL

Recorder No. 3088 Clock Range 12 Recorder No. 4377 Clock Range 12  
Depth 4375 Depth 4379  
Initial Hydro Mud Press. 2095 Initial Hydro Mud Press. 2095  
Initial Shut-in Press. 754 Initial Shut-in Press. 751  
Initial Flow Press. 141-306 Initial Flow Press. 140-305  
Final Flow Press. - Final Flow Press. -  
Final Shut-in Press. - Final Shut-in Press. -  
Final Hydro Mud Press. 2095 Final Hydro Mud Press. 2095  
Temperature \_\_\_\_\_ Tool Open Before I. S. I. 30 Mins.  
Mud Weight 9.3 Viscosity 46.0 Initial Shut-in 30 Mins.  
Fluid Loss 8.8 Flow Period - Mins.  
Interval Tested 4323-79 Final Shut-in - Mins.  
Top Packer Depth 4318 Surface Choke Size 1"  
Bottom Packer Depth 4323 Bottom Choke Size 3/4  
Total Depth 4379 Main Hole Size 7 7/8  
Drill Pipe Size 4 1/2 XH Wt. 1660 Rubber Size 6 3/4  
Drill Collar I. D. 2 1/4 Ft. Run 90

Recovery—Total Feet \_\_\_\_\_

Recovered 420 Feet Of Muddy Oil

Recovered 360 Feet Of Clean gassy oil

Recovered \_\_\_\_\_ Feet Of \_\_\_\_\_

Recovered \_\_\_\_\_ Feet Of \_\_\_\_\_

Remarks

Strong blow thru-test

Pull & reset

**RECEIVED**

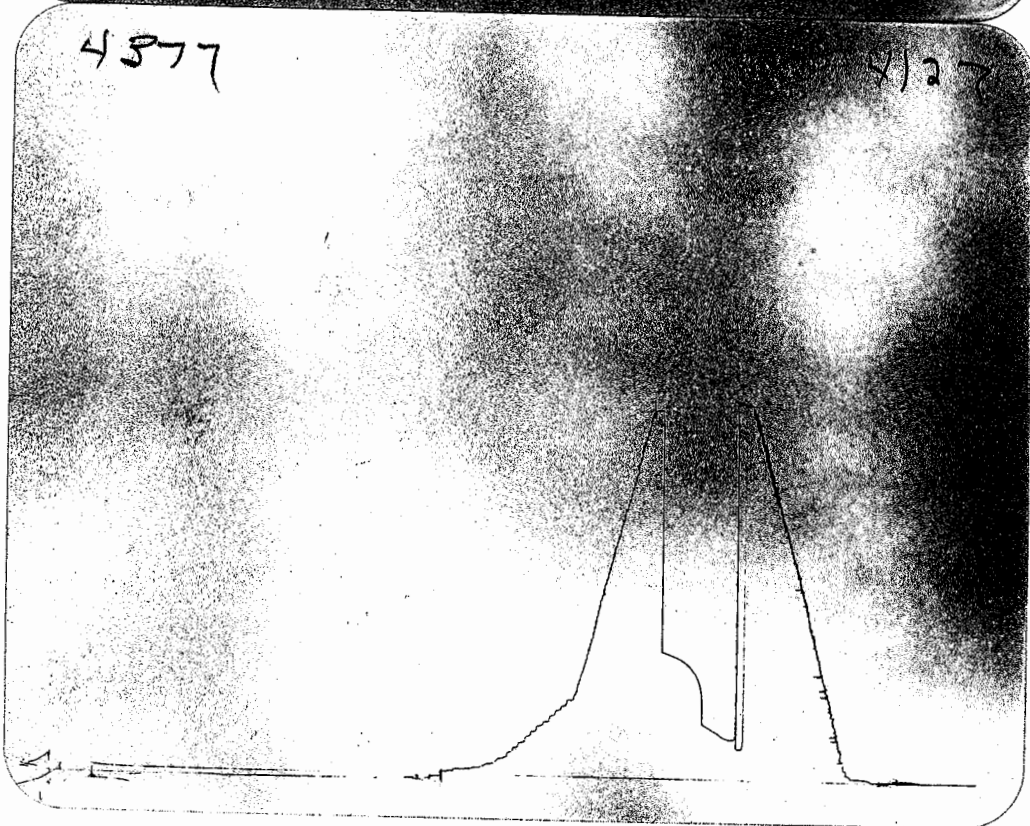
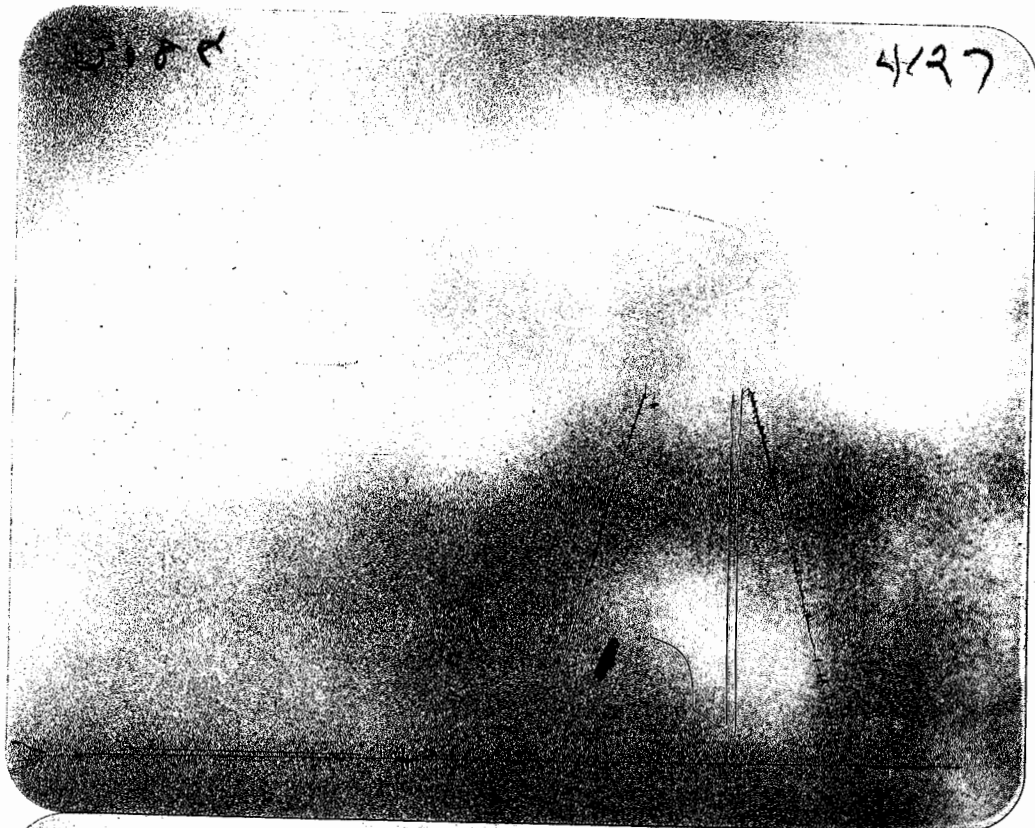
**JUN 28 2004**

**KCC WICHITA**

**THIS ORDER MUST BE SIGNED BEFORE WORK IS COMMENCED. CONDITIONS:** It is expressly understood and agreed that the above described work shall be done under the exclusive control, direction and supervision of the owner or contractor. As a part of the consideration for this agreement, it is expressly understood and agreed that Arrow Testing Company shall not be responsible for damages or losses of any kind whatsoever occasioned by or incident to the use of the above described Tools, whether run or operated by customer, or by anyone employed directly or indirectly by Arrow Testing Company, nor whether resulting from the acts or omissions of Arrow Testing Company, or any of its agents, servants or employees in any way connected with or related to the use of such Tools.

It is expressly understood and agreed that Arrow Testing Company, shall not be bound by any agreement, not herein contained, and no agent or representative connected with or employed by Arrow Testing Company has authority to alter or extend the terms of this agreement. I have read and understand the terms of this agreement and represent that I am authorized to sign the same as agent of customer.

CONFIDENTIAL



RECEIVED  
JUN 28 2004  
KCC WICHITA