



15-135-24530

20-185-24w

DIAMOND TESTING

P.O. Box 157

HOISINGTON, KANSAS 67544

(620) 653-7550 • (800) 542-7313

STC 21108.D 304

Company L. D. Drilling, Inc. Lease & Well No. Stenzel Partnership No. 1-20

Elevation 2288KB Formation Fort Scott Effective Pay -- Ft. Ticket No. J1910

Date 8-07-06 Sec. 20 Twp. 18S Range 24W County Ness State Kansas

Test Approved By Kim B. Shoemaker Diamond Representative John C. Riedl

Formation Test No. 1 Interval Tested from 4,190 ft. to 4,238 ft. Total Depth 4,238 ft.

Packer Depth 4,185 ft. Size 6 3/4 in. Packer Depth -- ft. Size -- in.

Packer Depth 4,190 ft. Size 6 3/4 in. Packer Depth -- ft. Size -- in.

Depth of Selective Zone Set -- ft.

Top Recorder Depth (Inside) 4,193 ft. Recorder Number 21108 Cap. 5,000 psi

Bottom Recorder Depth (Outside) 4,235 ft. Recorder Number 11017 Cap. 4,000 psi

Below Straddle Recorder Depth -- ft. Recorder Number -- Cap. -- psi

Drilling Contractor L. D. Drilling, Inc. - Rig 1 Drill Collar Length -- ft. I.D. -- in.

Mud Type Chemical Viscosity 49 Weight Pipe Length -- ft. I.D. -- in.

Weight 9.2 Water Loss 13.0 cc. Drill Pipe Length 4,168 ft. I.D. 3 1/2 in.

Chlorides 1,600 P.P.M. Test Tool Length 22 ft. Tool Size 3 1/2 - JF in.

Jars: Make Bowen Serial Number Not Run Anchor Length 48 ft. Size 4 1/2 - FH in.

Did Well Flow? No Reversed Out No Surface Choke Size 1 in. Bottom Choke Size 5/8 in.

Main Hole Size 7 7/8 in. Tool Joint Size 4 1/2 - XH in.

Blow: 1st Open: Weak, 2 in., blow.

2nd Open: Weak, 2 in., blow.

Recovered 45 ft. of oil specked mud = .461700 bbls. (Grind out: 100%-drilling mud)

Recovered -- ft. of --

Recovered -- ft. of --

Recovered -- ft. of --

Recovered -- ft. of --

Remarks --

RECEIVED

SEP 29 2006

KCC WICHITA

Time Set Packer(s) 2:35 ~~P.M.~~ A.M. Time Started Off Bottom 4:35 ~~P.M.~~ A.M. Maximum Temperature 115°

Initial Hydrostatic Pressure ..... (A) 2029 P.S.I.

Initial Flow Period ..... Minutes 30 (B) 38 P.S.I. to (C) 50 P.S.I.

Initial Closed In Period ..... Minutes 30 (D) 1187 P.S.I.

Final Flow Period ..... Minutes 30 (E) 49 P.S.I. to (F) 55 P.S.I.

Final Closed In Period ..... Minutes 30 (G) 1160 P.S.I.

Final Hydrostatic Pressure ..... (H) 2007 P.S.I.

## GENERAL INFORMATION

### Client Information:

Company: L D DRILLING INC

Contact: L D DAVIS

Phone: Fax: e-mail:

### Site Information:

Contact: KIM SHOEMAKER

Phone: Fax: e-mail:

### Well Information:

Name: STENZEL PARTNERSHIP #1-20

Operator: L D DRILLING INC

Location-Downhole: DST # 4190 TO 4238

Location-Surface: S20/18S/24W NESS COUNTY

### Test Information:

Company: DIAMOND TESTING

Representative: JOHN RIEDL

Supervisor: KIM SHOEMAKER

Test Type: CONVENTIONAL Job Number: D304

Test Unit: 2

Start Date: 2006/08/07 Start Time: 00:40:00

End Date: 2006/08/07 End Time: 07:00:00

Report Date: 2006/08/07 Prepared By: JOHN RIEDL

Qualified By: KIM SHOMAKER

### Remarks:

RECOVERY: 45' OIL SPECKED MUD (100% DRILLING MUD)

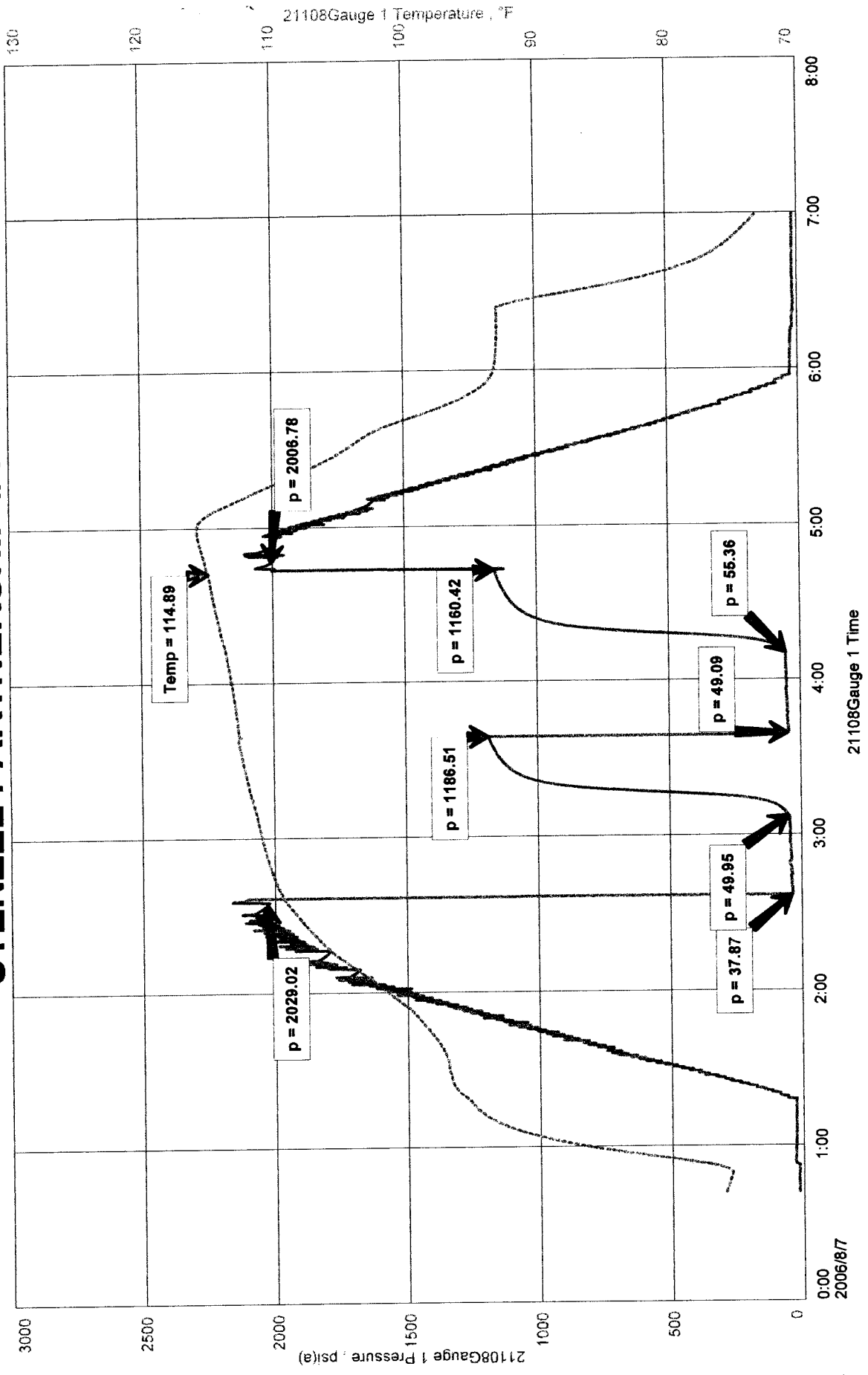
RECEIVED

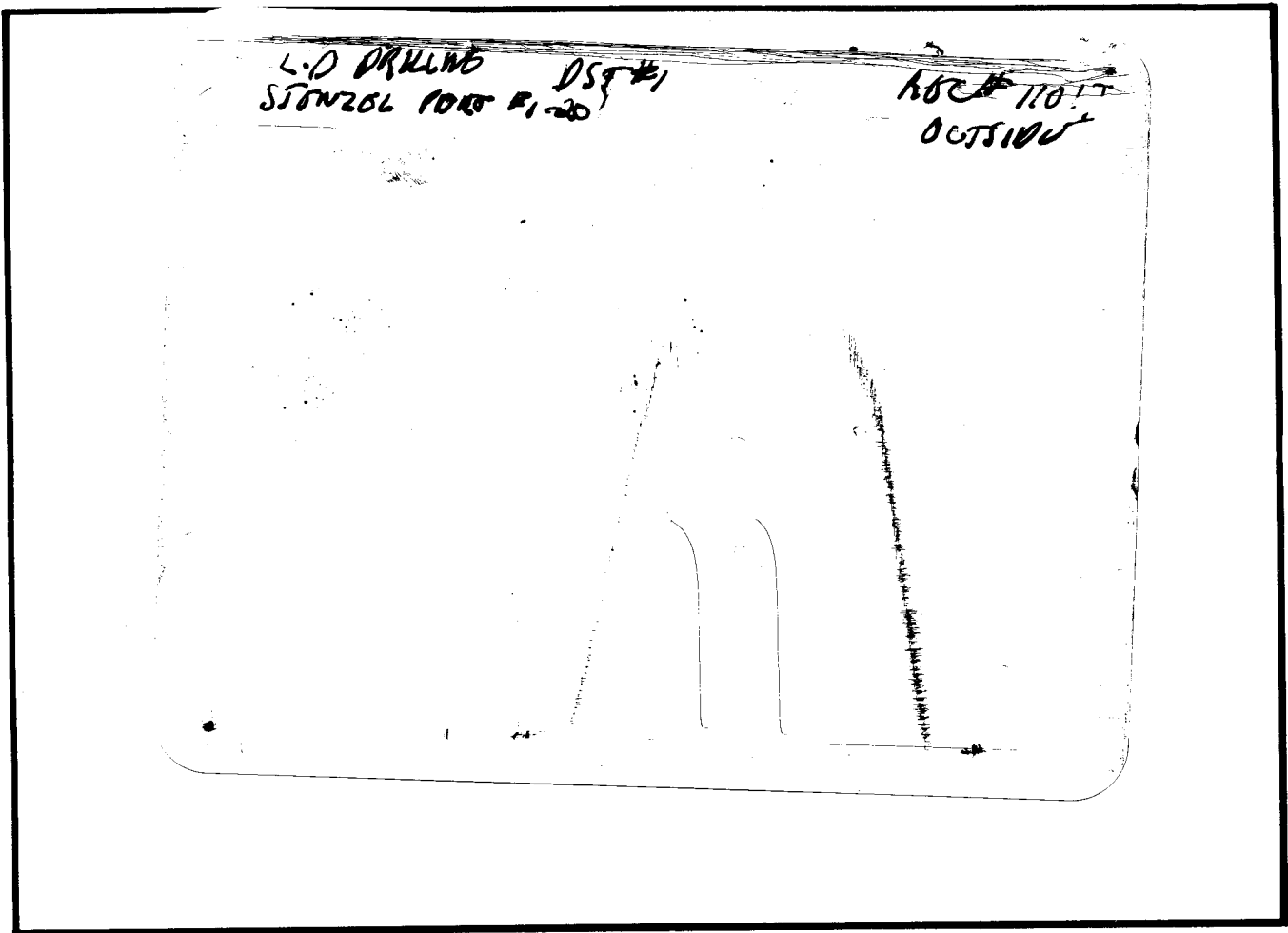
SEP 29 2006

KCC WICHITA

# STENZEL PARTNERSHIP #1-20

L D DRILLING INC  
 DST # 4190 TO 4238  
 Start Test Date: 2006/08/07  
 Final Test Date: 2006/08/07





This is an actual photograph of recorder chart.

POINT	PRESSURE		Elec. Office Reading	PSI
	Field Reading	Office Reading		
(A) Initial Hydrostatic Mud .....	2029	2029		PSI
(B) First Initial Flow Pressure.....	38	38		PSI
(C) First Final Flow Pressure .....	50	50		PSI
(D) Initial Closed-in Pressure .....	1187	1187		PSI
(E) Second Initial Flow Pressure .....	49	49		PSI
(F) Second Final Flow Pressure.....	55	55		PSI
(G) Final Closed-in Pressure.....	1160	1160		PSI
(H) Final Hydrostatic Mud .....	2007	2007		PSI



# DIAMOND TESTING

P.O. Box 157  
HOISINGTON, KANSAS 67544  
(620) 653-7550 • (800) 542-7313  
STC 21108.D 305

Company L. D. Drilling, Inc. Lease & Well No. Stenzel Partnership No. 1-20  
Elevation 2288KB Formation Cherokee/Mississippi Effective Pay      Ft. Ticket No. J1911  
Date 8-07-06 Sec. 20 Twp. 18S Range 24W County Ness State Kansas  
Test Approved By Kim B. Shoemaker Diamond Representative John C. Riedl

Formation Test No. 2 Interval Tested from 4,244 ft. to 4,305 ft. Total Depth 4,305 ft.  
Packer Depth 4,239 ft. Size 6 3/4 in. Packer Depth      ft. Size      in.  
Packer Depth 4,244 ft. Size 6 3/4 in. Packer Depth      ft. Size      in.  
Depth of Selective Zone Set      ft.

Top Recorder Depth (Inside) 4,247 ft. Recorder Number 21108 Cap. 5,000 psi  
Bottom Recorder Depth (Outside) 4,302 ft. Recorder Number 11017 Cap. 4,000 psi  
Below Straddle Recorder Depth      ft. Recorder Number      Cap.      psi

Drilling Contractor L. D. Drilling, Inc. - Rig 1 Drill Collar Length      ft. I.D.      in.  
Mud Type Chemical Viscosity 50 Weight Pipe Length      ft. I.D.      in.  
Weight 9.2 Water Loss 10.0 cc. Drill Pipe Length 4,222 ft. I.D. 3 1/2 in.  
Chlorides 3,000 P.P.M. Test Tool Length 22 ft. Tool Size 3 1/2 - IF in.  
Jars: Make Bowen Serial Number Not Run Anchor Length 61 ft. Size 4 1/2 - FH in.  
Did Well Flow? No Reversed Out No Surface Choke Size 1 in. Bottom Choke Size 5/8 in.  
Main Hole Size 7 7/8 in. Tool Joint Size 4 1/2 - XH in.

Blow: 1st Open: Strong blow. Off bottom of bucket in 28 mins. No blow back during shut-in.  
2nd Open: Strong blow. Off bottom of bucket in 32 mins. No blow back during shut-in.

Recovered 110 ft. of gas in pipe  
Recovered 130 ft. of clean gassy oil = 1.333800 bbls. (Grind out: 10%-gas; 90%-oil) Gravity: 37 @ 60°  
Recovered 190 ft. of gassy muddy oil = 1.949400 bbls. (Grind out: 15%-gas; 20%-mud; 65%-oil)  
Recovered 320 ft. of TOTAL FLUID = 3.283200 bbls.

Recovered      ft. of       
Remarks     

**RECEIVED**  
**SEP 7**  
**KCC WIC**

Time Set Packer(s) 6:30 <sup>AM</sup>P.M. Time Started Off Bottom 9:30 <sup>AM</sup>P.M. Maximum Temperature 118°  
Initial Hydrostatic Pressure      (A) 2070 P.S.I.  
Initial Flow Period 30 Minutes (B) 41 P.S.I. to (C) 90 P.S.I.  
Initial Closed In Period 45 Minutes (D) 1297 P.S.I.  
Final Flow Period 45 Minutes (E) 94 P.S.I. to (F) 156 P.S.I.  
Final Closed In Period 60 Minutes (G) 1276 P.S.I.  
Final Hydrostatic Pressure      (H) 2053 P.S.I.

## GENERAL INFORMATION

### Client Information:

Company: L D DRILLING INC

Contact: L D DAVIS

Phone: Fax: e-mail:

### Site Information:

Contact: KIM SHOEMAKER

Phone: Fax: e-mail:

### Well Information:

Name: STENZEL PARTNERSHIP #1-20

Operator:

Location-Downhole: DST #2 4244 TO 4305

Location-Surface: S20/18S/24W NESS COUNTY

### Test Information:

Company: DIAMOND TESTING

Representative: JOHN RIEDL

Supervisor: KIM SHOEMAKER

Test Type: CONVENTIONAL Job Number: D305

Test Unit: 2

Start Date: 2006/08/07 Start Time: 17:00:00

End Date: 2006/08/07 End Time: 23:30:00

Report Date: 2006/08/07 Prepared By: JOHN RIEDL

Qualified By: KIM SHOEMAKER

### Remarks:

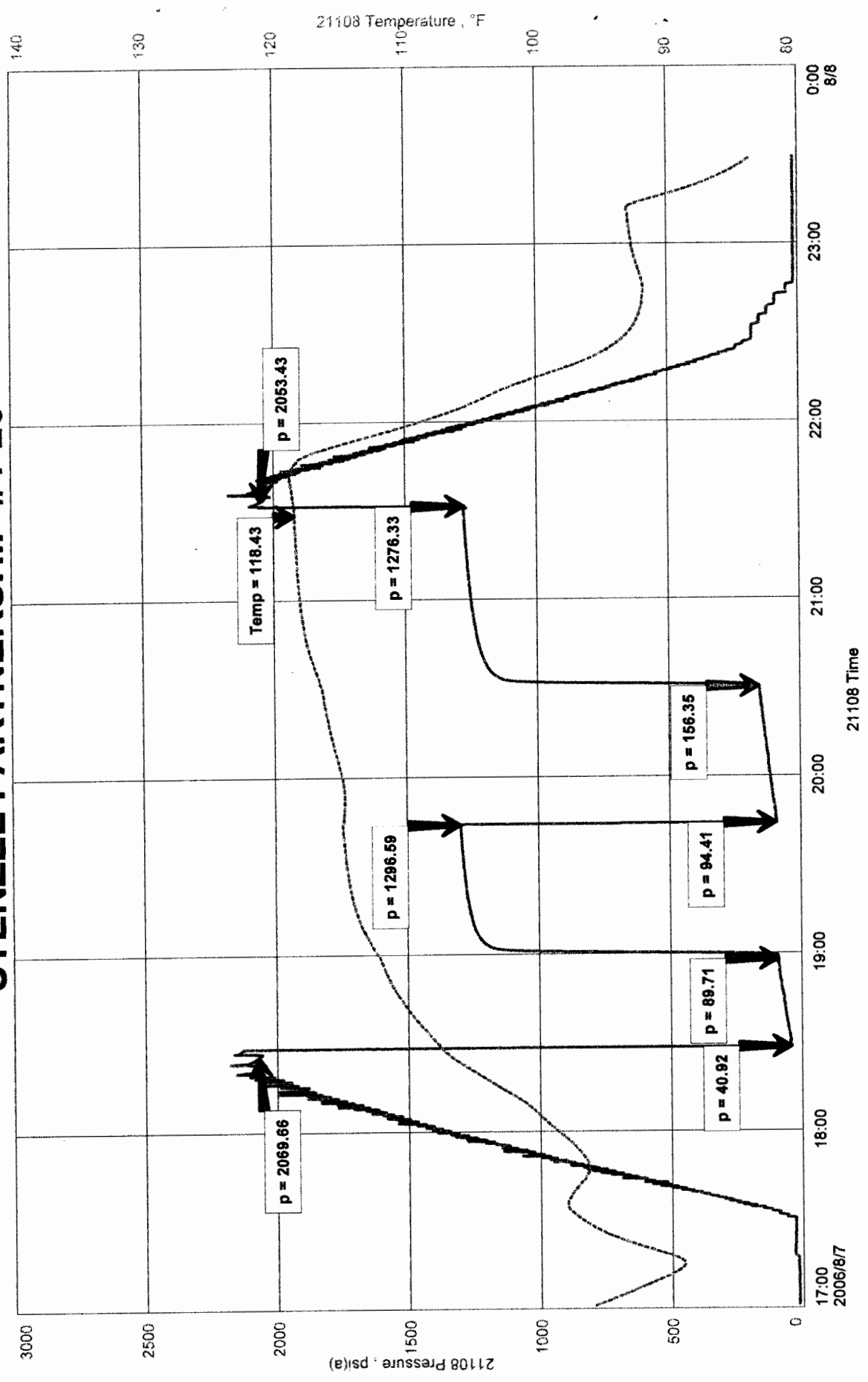
RECOVERY: 110' GAS IN PIPE  
130' CGO (10%GAS 90%OIL) 37 GRAVITY  
190' GMO (15%GAS 20%MUD 65%OIL)  
TOTAL FLUID REC. 320' IN DRILL PIPE

RECEIVED  
SEP 29 2006  
KCC WICHITA

STENZEL PARTNERSHIP #1-20  
 Formation: CHEROKEE, MISS  
 Job Number: D305

LD DRILLING INC  
 DST #2 4244 TO 4305  
 Start Test Date: 2006/08/07  
 Final Test Date: 2006/08/07

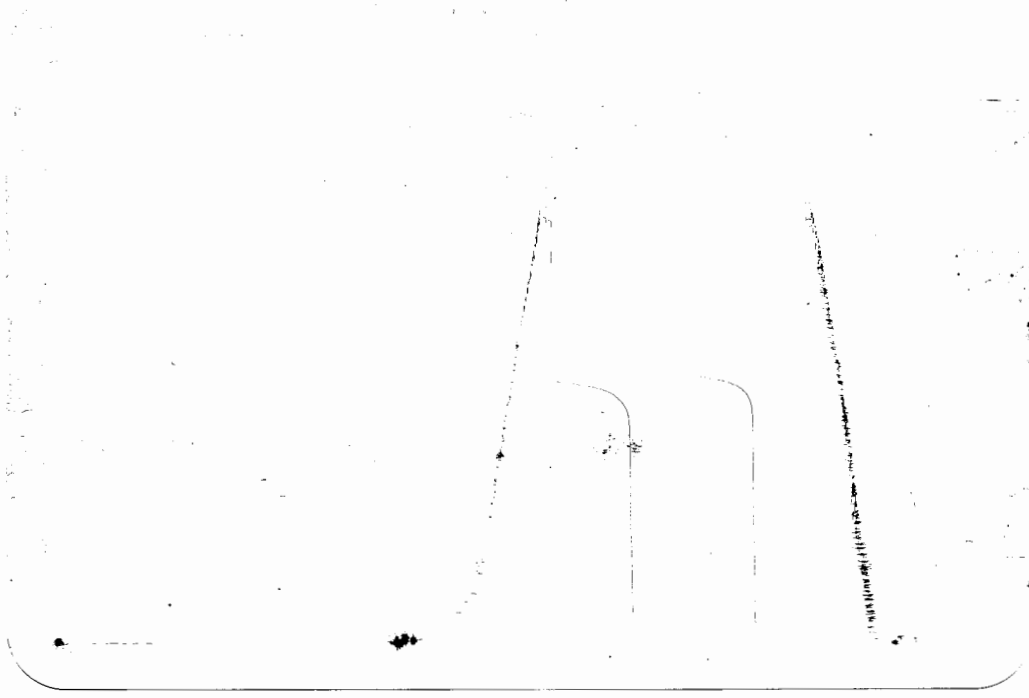
# STENZEL PARTNERSHIP #1-20



2.0  
 STB #2 PART #120

OSI #2

1200 #1017  
 OUTSIDE



This is an actual photograph of recorder chart.

POINT	PRESSURE		Elec. Office Reading	PSI
	Field Reading			
(A) Initial Hydrostatic Mud	2070		2070	PSI
(B) First Initial Flow Pressure	41		41	PSI
(C) First Final Flow Pressure	90		90	PSI
(D) Initial Closed-in Pressure	1297		1297	PSI
(E) Second Initial Flow Pressure	94		94	PSI
(F) Second Final Flow Pressure	156		156	PSI
(G) Final Closed-in Pressure	1276		1276	PSI
(H) Final Hydrostatic Mud	2053		2053	PSI



# DIAMOND TESTING

P.O. Box 157  
HOISINGTON, KANSAS 67544  
(620) 653-7550 • (800) 542-7313  
STC 21108.D306

Company L. D. Drilling, Inc. Lease & Well No. Stenzel Partnership No. 1-20

Elevation 2288KB Formation Mississippi Effective Pay -- Ft. Ticket No. J1912

Date 8-08-06 Sec. 20 Twp. 18S Range 24W County Ness State Kansas

Test Approved By Kim B. Shoemaker Diamond Representative John C. Riedl

Formation Test No. 3 Interval Tested from 4,304 ft. to 4,315 ft. Total Depth 4,315 ft.

Packer Depth 4,299 ft. Size 6 3/4 in. Packer Depth -- ft. Size -- in.

Packer Depth 4,304 ft. Size 6 3/4 in. Packer Depth -- ft. Size -- in.

Depth of Selective Zone Set -- ft.

Top Recorder Depth (Inside) 4,307 ft. Recorder Number 21108 Cap. 5,000 psi

Bottom Recorder Depth (Outside) 4,312 ft. Recorder Number 11017 Cap. 4,000 psi

Below Straddle Recorder Depth -- ft. Recorder Number -- Cap. -- psi

Drilling Contractor L. D. Drilling, Inc. - Rig 1 Drill Collar Length -- ft. I.D. -- in.

Mud Type Chemical Viscosity 42 Weight Pipe Length -- ft. I.D. -- in.

Weight 9.3 Water Loss 10.0 cc. Drill Pipe Length 4,282 ft. I.D. 3 1/2 in.

Chlorides 3,000 P.P.M. Test Tool Length 22 ft. Tool Size 3 1/2 - IF in.

Jars: Make Bowen Serial Number Not Run Anchor Length 11 ft. Size 4 1/2 - FH in.

Did Well Flow? No Reversed Out No Surface Choke Size 1 in. Bottom Choke Size 5/8 in.

Main Hole Size 7 7/8 in. Tool Joint Size 4 1/2 - XH in.

Blow: 1st Open: Strong blow. Off bottom of bucket in 12 mins. No blow back during shut-in.  
2nd Open: Strong blow. Off bottom of bucket in 14 mins. Weak blow back during shut-in.

Recovered 45 ft. of gas in pipe

Recovered 560 ft. of clean gassy oil = 5.745600 bbls. (Grind out: 15%-gas; 85%-oil) Gravity: 36 @ 60°

Recovered 90 ft. of very slightly water cut gassy muddy oil = .923400 bbls. (Grind out: 3%-water; 20%-gas; 15%-mud; 62%-oil) Chlorides: 4,000 Ppm

Recovered 650 ft. of TOTAL FLUID = 6.669000 bbls.

Recovered -- ft. of --

RECEIVED

SEP 29 2006

KCC WICHITA

Time Set Packer(s) 7:32 A.M. P.M. Time Started Off Bottom 10:32 A.M. P.M. Maximum Temperature 128°

Initial Hydrostatic Pressure ..... (A) 2119 P.S.I.

Initial Flow Period ..... Minutes 30 (B) 40 P.S.I. to (C) 125 P.S.I.

Initial Closed In Period ..... Minutes 45 (D) 1341 P.S.I.

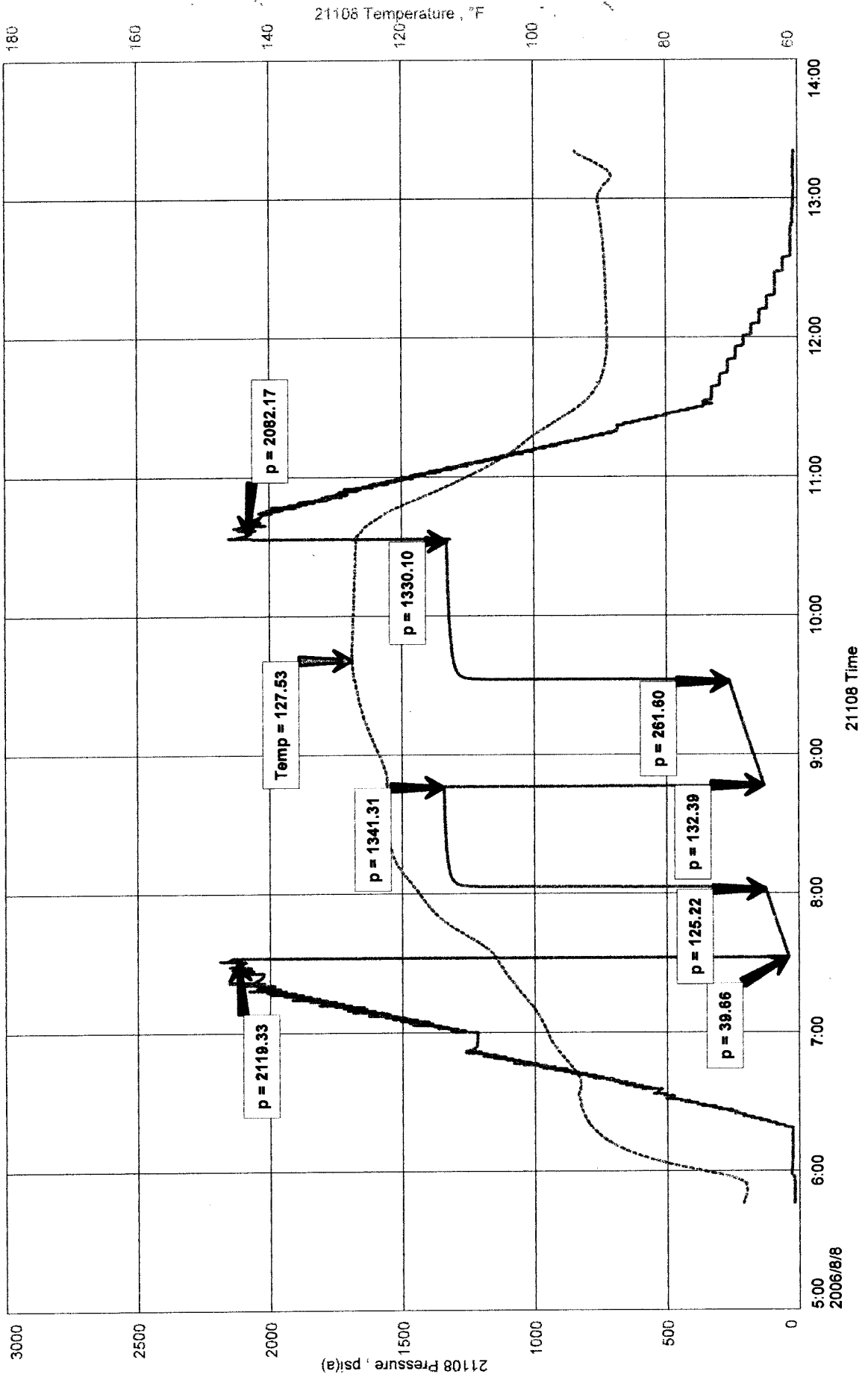
Initial Flow Period ..... Minutes 45 (E) 132 P.S.I. to (F) 262 P.S.I.

Initial Closed In Period ..... Minutes 60 (G) 1330 P.S.I.

Initial Hydrostatic Pressure ..... (H) 2082 P.S.I.

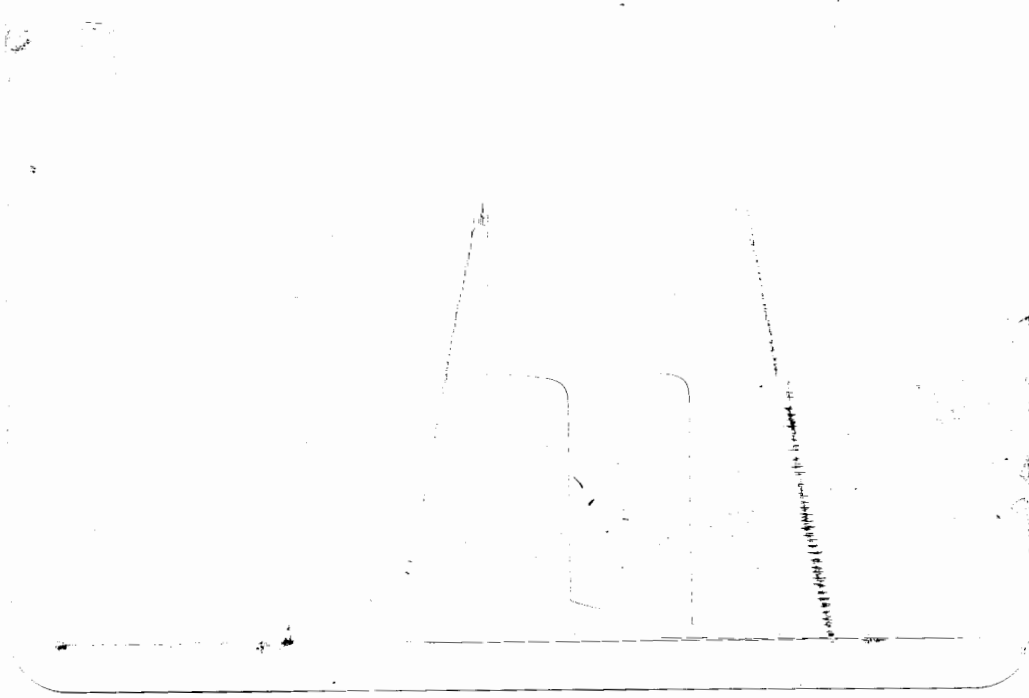


# STENZEL PARTNERSHIP #1-20



L.D.  
STONZKA PART

PST#3 - ROCCATION  
OUTSIDE



This is an actual photograph of recorder chart.

POINT	PRESSURE		Elec. Office Reading	PSI
	Field Reading	Office Reading		
(A) Initial Hydrostatic Mud .....	2119	2119		PSI
(B) First Initial Flow Pressure.....	40	40		PSI
(C) First Final Flow Pressure .....	125	125		PSI
(D) Initial Closed-in Pressure .....	1341	1341		PSI
(E) Second Initial Flow Pressure .....	132	132		PSI
(F) Second Final Flow Pressure.....	262	262		PSI
(G) Final Closed-in Pressure.....	1330	1330		PSI
(H) Final Hydrostatic Mud .....	2082	2082		PSI