

DRILL-STEM TEST DATA

Well Name: WHIPPLE #A-6 "C" #3 K6S DRL
Company : BUFFALO OPERATING LLC
Location - Sec: 8 **Twp:** 18S **Rge:** 26W
County: NESS **State:** KS
Date: 02-Oct-95

TRILOBITE TESTING L.L.C.

OPERATOR : Buffalo Operating LLC
 WELL NAME: Whipple "C" #3
 LOCATION : 8-18S-26W, Ness County KS
 INTERVAL : 4362.00 To 4417.00 ft

DATE 10/01/95
 KB 2520.00 ft
 GR 0.00 ft
 TD 4417.00 ft

TICKET NO: 8078
 FORMATION: Fort Scott
 TEST TYPE: CONVENTIONAL
 DST #1

RECORDER DATA

Mins		Field	1	2	3	4	TIME DATA-----
PF 30	Rec.	13339	13339	13309			PF Fr. 1900 to 1930 hr
SI 30	Range(Psi)	4025.0	4025.0	4700.0	0.0	0.0	IS Fr. 1930 to 2000 hr
SF 30	Clock(hrs)	23832	23832	23934			SF Fr. 2000 to 2030 hr
FS 30	Depth(ft)	4375.0	4375.0	4412.0	0.0	0.0	FS Fr. 2030 to 2100 hr

	Field	1	2	3	4	
A. Init Hydro	2153.0	2161.0	0.0	0.0	0.0	T STARTED hr
B. First Flow	20.0	42.0	0.0	0.0	0.0	T ON BOTM hr
B1. Final Flow	20.0	42.0	0.0	0.0	0.0	T OPEN 1900 hr
C. In Shut-in	719.0	725.0	0.0	0.0	0.0	T PULLED 2100 hr
D. Init Flow	20.0	42.0	0.0	0.0	0.0	T OUT hr
E. Final Flow	20.0	42.0	0.0	0.0	0.0	
F. Fl Shut-in	363.0	381.0	0.0	0.0	0.0	TOOL DATA-----
G. Final Hydro	2103.0	2109.0	0.0	0.0	0.0	Tool Wt. 0.00 lbs
Inside/Outside	I	I	O			Wt Set On Packer 0.00 lbs
						Wt Pulled Loose 0.00 lbs
						Initial Str Wt 0.00 lbs
						Unseated Str Wt 0.00 lbs
						Bot Choke 0.75 in
						Hole Size 7.88 in
						D Col. ID 2.25 in
						D. Pipe ID 3.80 in
						D.C. Length 0.00 ft
						D.P. Length 0.00 ft

RECOVERY

Tot Fluid 5.00 ft of 0.00 ft in DC and 5.00 ft in DP
 5.00 ft of Drilling mud w/ few specks of oil in tool
 0.00 ft of
 0.00 ft of
 0.00 ft of
 0.00 ft of
 0.00 ft of
 0.00 ft of
 0.00 ft of

SALINITY 0.00 P.P.M. A.P.I. Gravity 0.00

BLOW DESCRIPTION

Initial Blow -
 Good surge at open, no blow

Final Blow -
 No return blow

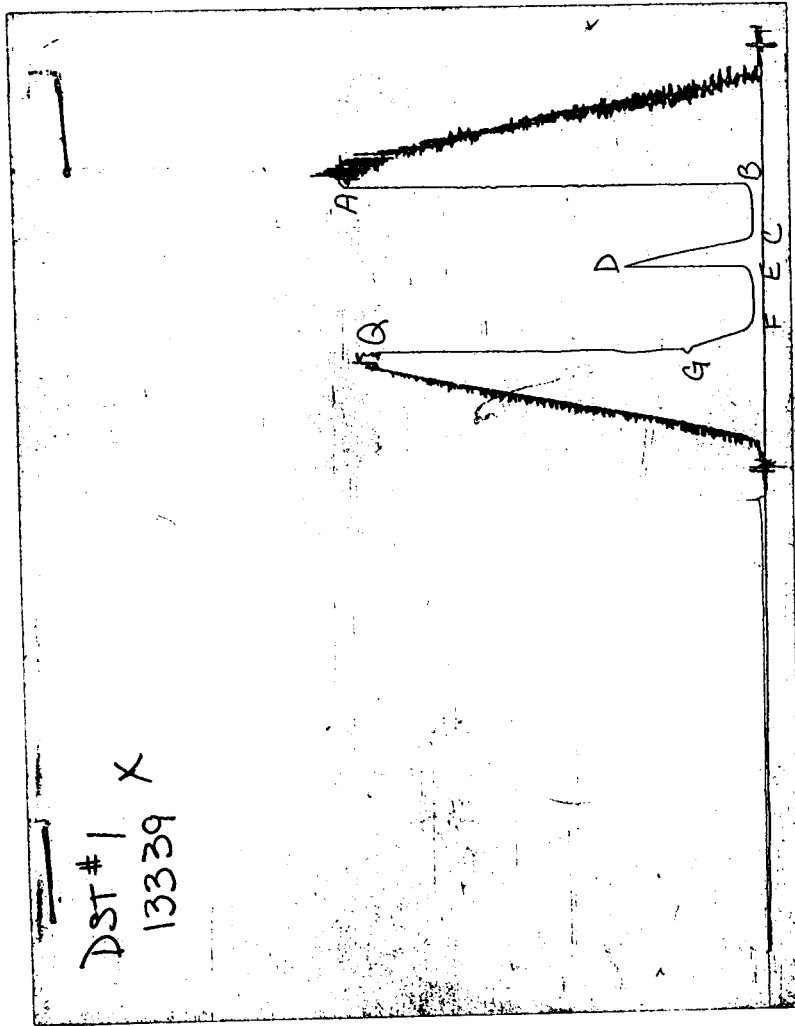
SAMPLES:
 SENT TO:

MUD DATA-----

Mud Type	Chemical
Weight	9.30 lb/c
Vis.	60.00 S/L
W.L.	8.80 in3
F.C.	0.00 in
Mud Drop	
Amt. of fill	0.00 ft
Btm. H. Temp.	117.00 F
Hole Condition	
% Porosity	0.00
Packer Size	6.75 in
No. of Packers	2
Cushion Amt.	0.00
Cushion Type	
Reversed Out	
Tool Chased	
Tester	Rod Steinbrink
Co. Rep.	Arnold/Cornett
Contr.	Duke
Rig #	4
Unit #	
Pump T.	

Test Successful: Y

CHART PAGE



This is an actual photograph of recorder chart

TRILOBITE TESTING L.L.C.

OPERATOR : Buffalo Operating Co
 WELL NAME: Whipple "C" #3
 LOCATION : 8-18S-26W, Ness County KS
 INTERVAL : 4446.00 To 4491.00 ft

DATE 10/02/95
 KB 2520.00 ft
 GR 0.00 ft
 TD 4491.00 ft

TICKET NO: 8079
 FORMATION: Mississippian
 TEST TYPE: CONVENTIONAL

DST #2

RECORDER DATA

Mins	Field	1	2	3	4	TIME DATA-----
PF 30 Rec.	13339	13339	13309			PF Fr. 1110 to 1140 hr
SI 30 Range(Psi)	4025.0	4025.0	4700.0	0.0	0.0	IS Fr. 1140 to 1210 hr
SF 30 Clock(hrs)	23832	23832	23934			SF Fr. 1210 to 1240 hr
FS 30 Depth(ft)	4455.0	4455.0	4486.0	0.0	0.0	FS Fr. 1240 to 1310 hr

	Field	1	2	3	4	
A. Init Hydro	2193.0	2199.0	0.0	0.0	0.0	T STARTED hr
B. First Flow	20.0	27.0	0.0	0.0	0.0	T ON BOTM hr
B1. Final Flow	20.0	27.0	0.0	0.0	0.0	T OPEN 1110 hr
C. In Shut-in	280.0	272.0	0.0	0.0	0.0	T PULLED 1310 hr
D. Init Flow	20.0	29.0	0.0	0.0	0.0	T OUT hr
E. Final Flow	20.0	29.0	0.0	0.0	0.0	
F. Fl Shut-in	124.0	139.0	0.0	0.0	0.0	TOOL DATA-----
G. Final Hydro	2173.0	2165.0	0.0	0.0	0.0	Tool Wt. 0.00 lbs
Inside/Outside	I	I	O			Wt Set On Packer 0.00 lbs
						Wt Pulled Loose 0.00 lbs
						Initial Str Wt 0.00 lbs
						Unseated Str Wt 0.00 lbs
						Bot Choke 0.75 in
						Hole Size 7.88 in
						D Col. ID 2.25 in
						D. Pipe ID 3.80 in
						D.C. Length 0.00 ft
						D.P. Length 0.00 ft

RECOVERY

Tot Fluid 5.00 ft of 0.00 ft in DC and 5.00 ft in DP
 5.00 ft of Drilling mud w/ oil stains in tool
 0.00 ft of
 0.00 ft of
 0.00 ft of
 0.00 ft of
 0.00 ft of
 0.00 ft of
 0.00 ft of

SALINITY 0.00 P.P.M. A.P.I. Gravity 0.00

BLOW DESCRIPTION

Initial Blow -
 Weak .25" blow died at 15 min

Final Blow -
 No return blow

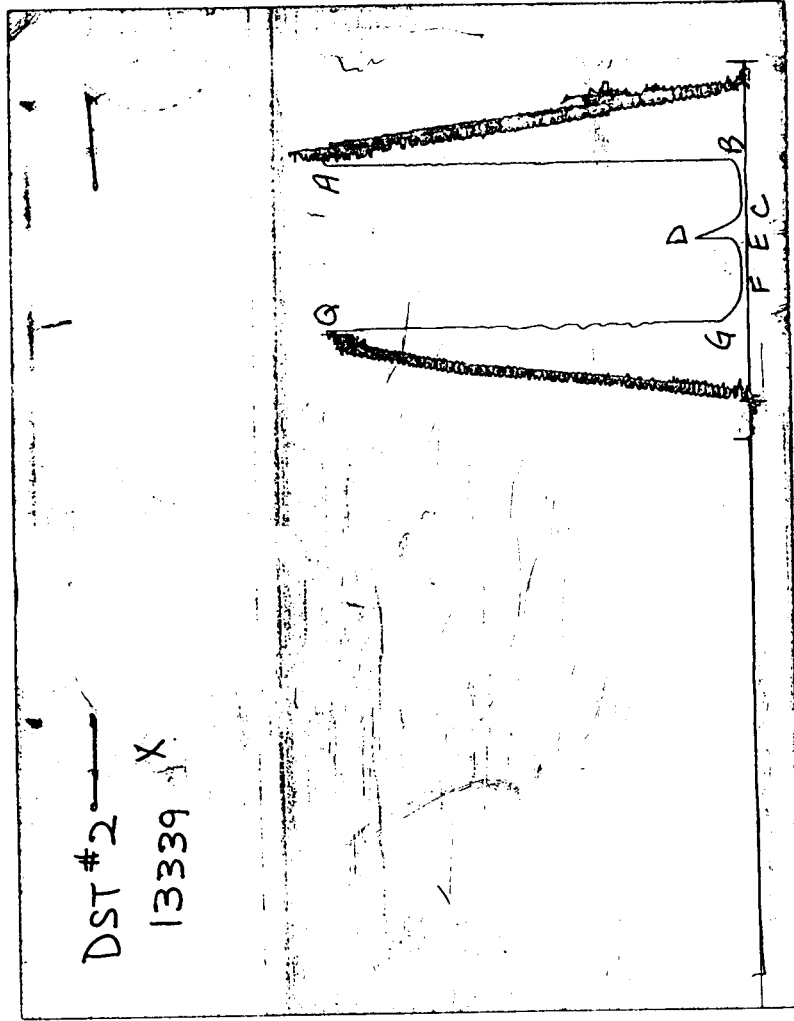
SAMPLES:
 SENT TO:

MUD DATA-----

Mud Type	Chemical
Weight	9.30 lb/c
Vis.	58.00 S/L
W.L.	8.80 in3
F.C.	0.00 in
Mud Drop	
Amt. of fill	0.00 ft
Btm. H. Temp.	117.00 F
Hole Condition	
% Porosity	0.00
Packer Size	6.75 in
No. of Packers	2
Cushion Amt.	0.00
Cushion Type	
Reversed Out	
Tool Chased	
Tester	Rod Steinbrink
Co. Rep.	Arnold/Cornett
Contr.	Duke
Rig #	4
Unit #	
Pump T.	

Test Successful: Y

CHART PAGE



This is an actual photograph of recorder chart