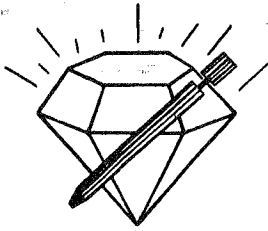


15-101-22150

12-18s-28w



DIAMOND TESTING

P.O. Box 157

HOISINGTON, KANSAS 67544

(620) 653-7550 • (800) 542-7313

STC 30035.D009

Company Mull Drilling Company, Inc. Lease & Well No. Lila No. 1-12

Elevation 2714 KB Formation Lansing/Kansas City "J" Effective Pay --Ft. Ticket No. P009

Date 2-7-09 Sec. 12 Twp. 18S Range 28W County Lane State Kansas

Test Approved By Phil Askey Diamond Representative Paul Schilowsky

Formation Test No. 1 Interval Tested from 4,218 ft. to 4,235 ft. Total Depth 4,235 ft.

Packer Depth 4,213 ft. Size 63/4 in. Packer Depth -- ft. Size -- in.

Packer Depth 4,218 ft. Size 63/4 in. Packer Depth -- ft. Size -- in.

Depth of Selective Zone Set ft.

Top Recorder Depth (Inside) 4,208 ft. Recorder Number 30035 Cap. 5,000 psi

Bottom Recorder Depth (Outside) 4,232 ft. Recorder Number 13387 Cap. 3,900 psi

Below Straddle Recorder Depth ft. Recorder Number Cap. psi

Drilling Contractor WW Drilling, LLC - Rig 10 Drill Collar Length 123 ft. I.D. 2 1/4 in.

Mud Type Chemical Viscosity 47 Weight Pipe Length -- ft. I.D. -- in.

Weight 9.1 Water Loss 10.8 cc. Drill Pipe Length 3,977 ft. I.D. 3 1/2 in.

Chlorides 1,200 P.P.M. Test Tool Length 25 ft. Tool Size 3 1/2 - IF in.

Jars: Make Sterling Serial Number Not Run Anchor Length 17' perf. w/93' drill pipe Size 4 1/2 - FH in.

Did Well Flow? No Reversed Out No Surface Choke Size 1 in. Bottom Choke Size 5/8 in.

Main Hole Size 7 7/8 in. Tool Joint Size 4 1/2 - XH in.

Blow: 1st Open: Weak blow building to 3 1/2 ins. No blow back during shut-in.

2nd Open: Good blow building to 7 1/2 ins. No blow back during shut-in.

Recovered 236 ft. of muddy water = 2.213150 bbls.

Recovered ft. of

Recovered ft. of

Recovered ft. of

Recovered ft. of

Remarks Tool Sample Grind Out: 2%-oil; 8%-mud; 90%-water

Time Set Packer(s) 6:24 A.M. P.M. Time Started Off Bottom 10:04 A.M. P.M. Maximum Temperature 125°

Initial Hydrostatic Pressure (A) 2073 P.S.I.

Initial Flow Period Minutes 10 (B) 33 P.S.I. to (C) 65 P.S.I.

Initial Closed In Period Minutes 30 (D) 910 P.S.I.

Final Flow Period Minutes 60 (E) 72 P.S.I. to (F) 134 P.S.I.

Final Closed In Period Minutes 120 (G) 902 P.S.I.

Final Hydrostatic Pressure (H) 2074 P.S.I.

GENERAL INFORMATION

Client Information:

Company: MULL DRLG. CO.

Contact: ERNIE MORRISON

Phone: Fax: e-mail:

Site Information:

Contact: PHIL ASKEY

Phone: Fax: e-mail:

Well Information:

Name: LILA 1-12

Operator: MULL DRLG. CO.

Location-Downhole: DST#1 LKC J 4218 - 4235

Location-Surface: SEC 12 18S 28W

Test Information:

Company: DIAMOND TESTING

Representative: PAUL

Supervisor: PHIL ASKEY

Test Type: Drill Stem Test Job Number: POO 9

Test Unit: NO. 1

Start Date: 2009/02/07 Start Time: 03:51:00

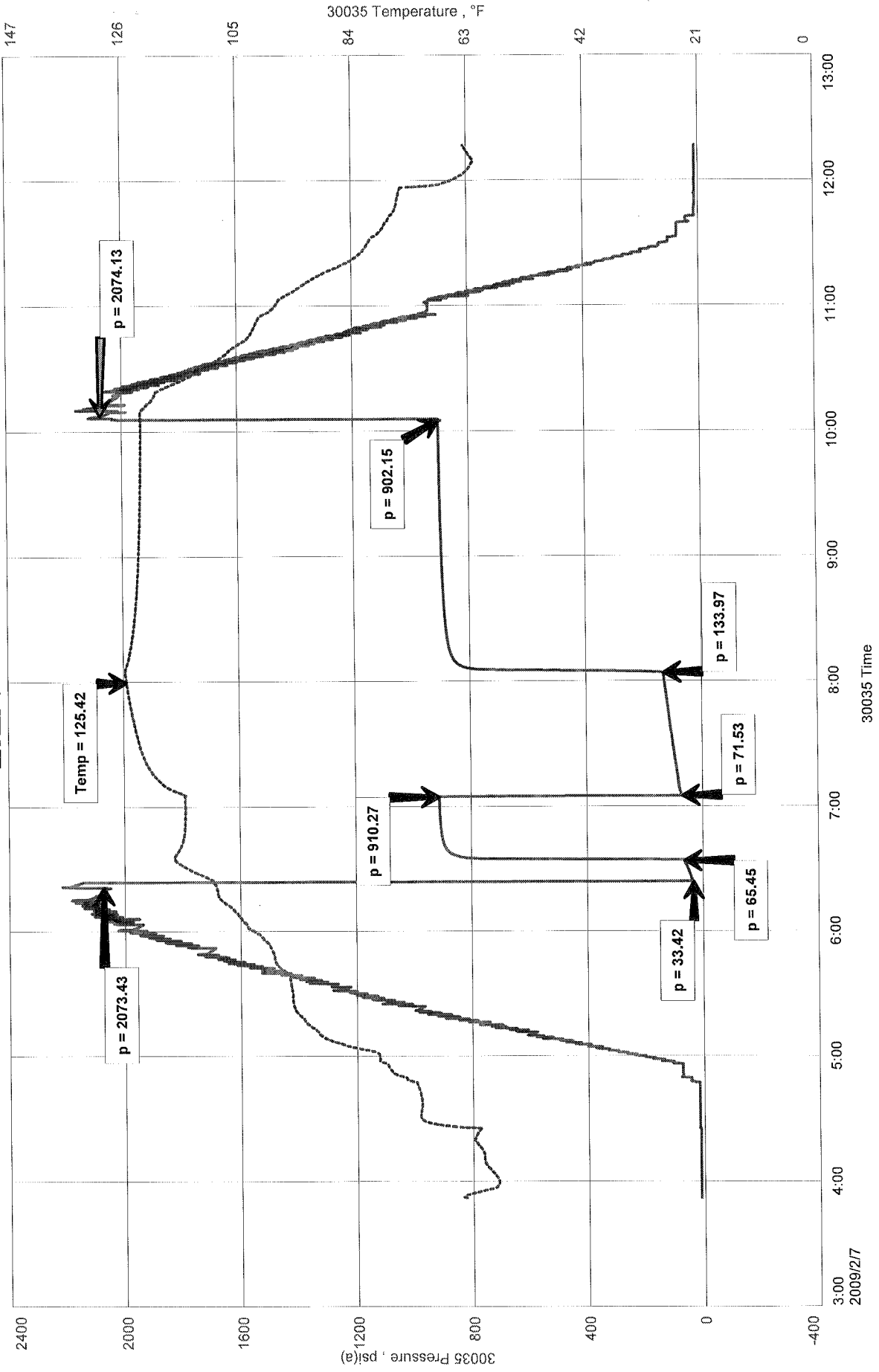
End Date: 2009/02/07 End Time: 12:17:00

Report Date: 2009/02/07 Prepared By: PAUL

Remarks: Qualified By: PHIL

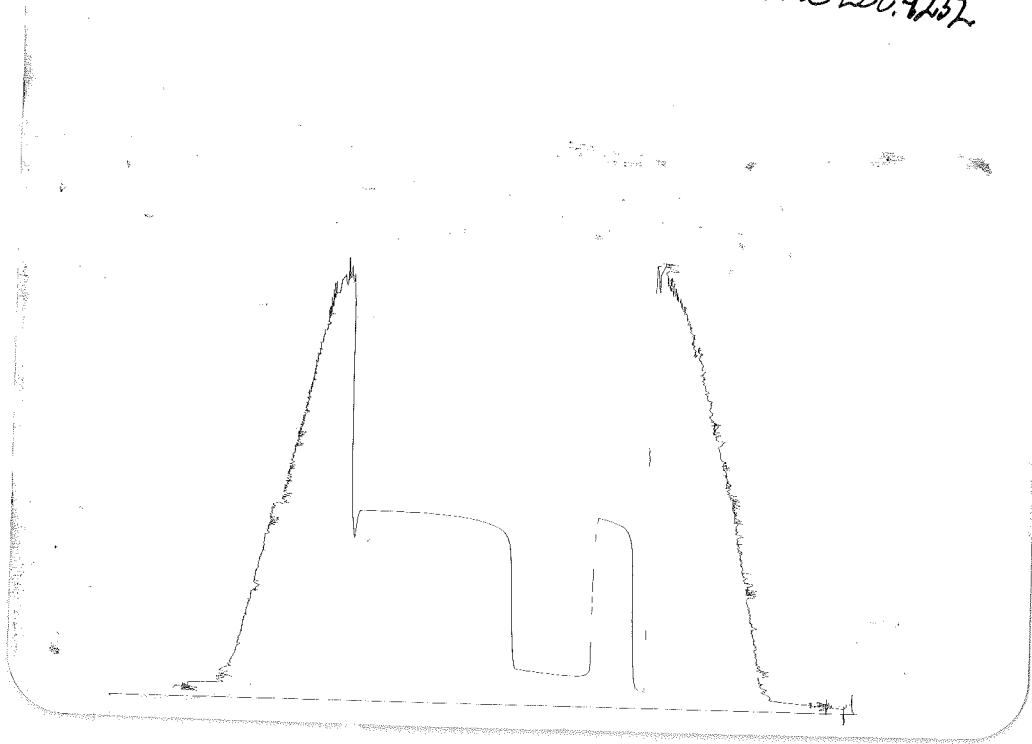
RECOVERED: 236 FT. MW
TOOL SMPL: 2%OIL 8% MUD 90% WATER
236 FT. FLUID TOTAL

LILA 1-12



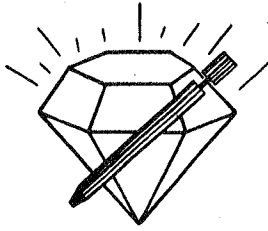
DST #1 LKJ 428-4235

#13387
Outside Loc. 4235



This is an actual photograph of recorder chart.

POINT	PRESSURE		
	Field Reading	Elec. Office Reading	
(A) Initial Hydrostatic Mud	2073	2073	PSI
(B) First Initial Flow Pressure.....	33	33	PSI
(C) First Final Flow Pressure	65	65	PSI
(D) Initial Closed-in Pressure	910	910	PSI
(E) Second Initial Flow Pressure	72	72	PSI
(F) Second Final Flow Pressure.....	134	134	PSI
(G) Final Closed-in Pressure.....	902	902	PSI
(H) Final Hydrostatic Mud	2074	2074	PSI



DIAMOND TESTING

P.O. Box 157
HOISINGTON, KANSAS 67544
(620) 653-7550 • (800) 542-7313
STC 30035.D010

Company Mull Drilling Company, Inc. Lease & Well No. Lila No. 1-12

Elevation 2714 KB Formation Lansing/Kansas City 'K' Effective Pay --Ft. Ticket No. P010

Date 2-7-09 Sec. 12 Twp. 18S Range 28W County Lane State Kansas

Test Approved By Phil Askey Diamond Representative Paul Schilowsky

Formation Test No. 2 Interval Tested from 4,240 ft. to 4,265 ft. Total Depth 4,265 ft.

Packer Depth 4,235ft. Size 6 3/4 in. Packer Depth -- ft. Size -- in.

Packer Depth 4,240ft. Size 6 3/4 in. Packer Depth -- ft. Size -- in.

Depth of Selective Zone Set ft.

Top Recorder Depth (Inside) 4,230 ft. Recorder Number 30035 Cap. 5,000 psi

Bottom Recorder Depth (Outside) 4,262 ft. Recorder Number 13387 Cap. 3,900 psi

Below Straddle Recorder Depth ft. Recorder Number Cap. psi

Drilling Contractor WW Drilling, LLC - Rig 10 Drill Collar Length 123 ft. I.D. 2 1/4 in.

Mud Type Chemical Viscosity 46 Weight Pipe Length -- ft. I.D. -- in.

Weight 9.3 Water Loss 10.4 cc. Drill Pipe Length 4,092 ft. I.D. 3 1/2 in.

Chlorides 1,600 P.P.M. Test Tool Length 25 ft. Tool Size 3 1/2 - IF in.

Jars: Make Sterling Serial Number Not Run Anchor Length 25 ft. Size 4 1/2 - FH in.

Did Well Flow? No Reversed Out No Surface Choke Size 1 in. Bottom Choke Size 5/8 in.

Main Hole Size 7 7/8 in. Tool Joint Size 4 1/2 - XH in.

Blow: 1st Open: Weak blow building to 2 ins. No blow back during shut-in.

2nd Open: Weak blow building to 4 ins. No blow back during shut-in.

Recovered 1 ft. of clean oil = .014230 bbls.

Recovered 155 ft. of oil cut muddy water = 1.060520 bbls.

Recovered 156 ft. of TOTAL FLUID = 1.074750 bbls.

Recovered ft. of

Recovered ft. of

Remarks Tool Sample Grind Out: 5%-oil; 20%-mud; 75%-water

Time Set Packer(s) 9:12 ~~AM.~~ P.M. Time Started Off Bottom 12:52 ~~PM.~~ A.M. Maximum Temperature 117°

Initial Hydrostatic Pressure (A) 2100 P.S.I.

Initial Flow Period Minutes 10 (B) 29 P.S.I. to (C) 46 P.S.I.

Initial Closed In Period Minutes 30 (D) 827 P.S.I.

Final Flow Period Minutes 60 (E) 52 P.S.I. to (F) 96 P.S.I.

Final Closed In Period Minutes 120 (G) 825 P.S.I.

Final Hydrostatic Pressure (H) 2098 P.S.I.

GENERAL INFORMATION

Client Information:

Company: MULL DRLG. CO.

Contact: ERNIE MORRISON

Phone: Fax: e-mail:

Site Information:

Contact: PHIL ASKEY

Phone: Fax: e-mail:

Well Information:

Name: LILA 1-12

Operator: MULL DRLG. CO.

Location-Downhole: DST# 2 LKC K 4240-4265

Location-Surface: SEC 12 / 18S / 28 W

Test Information:

Company: DIAMOND TESTING

Representative: PAUL

Supervisor: PHIL ASKEY

Test Type: Drill Stem Test

Job Number: PO10

Test Unit: NO. 1

Start Date: 2009/02/07

Start Time: 19:24:00

End Date: 2009/02/08

End Time: 03:13:00

Report Date: 2009/02/08

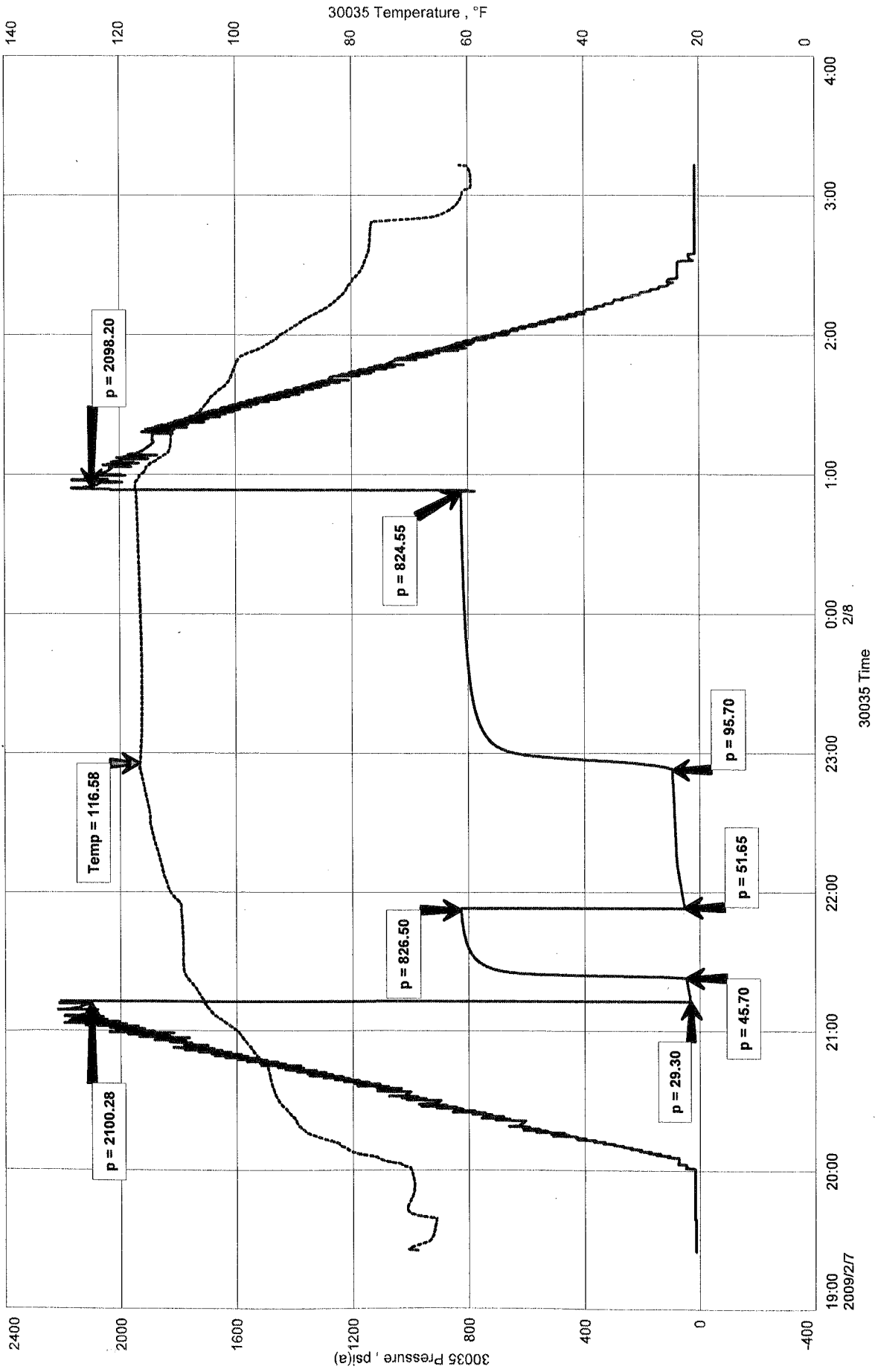
Prepared By: PAUL

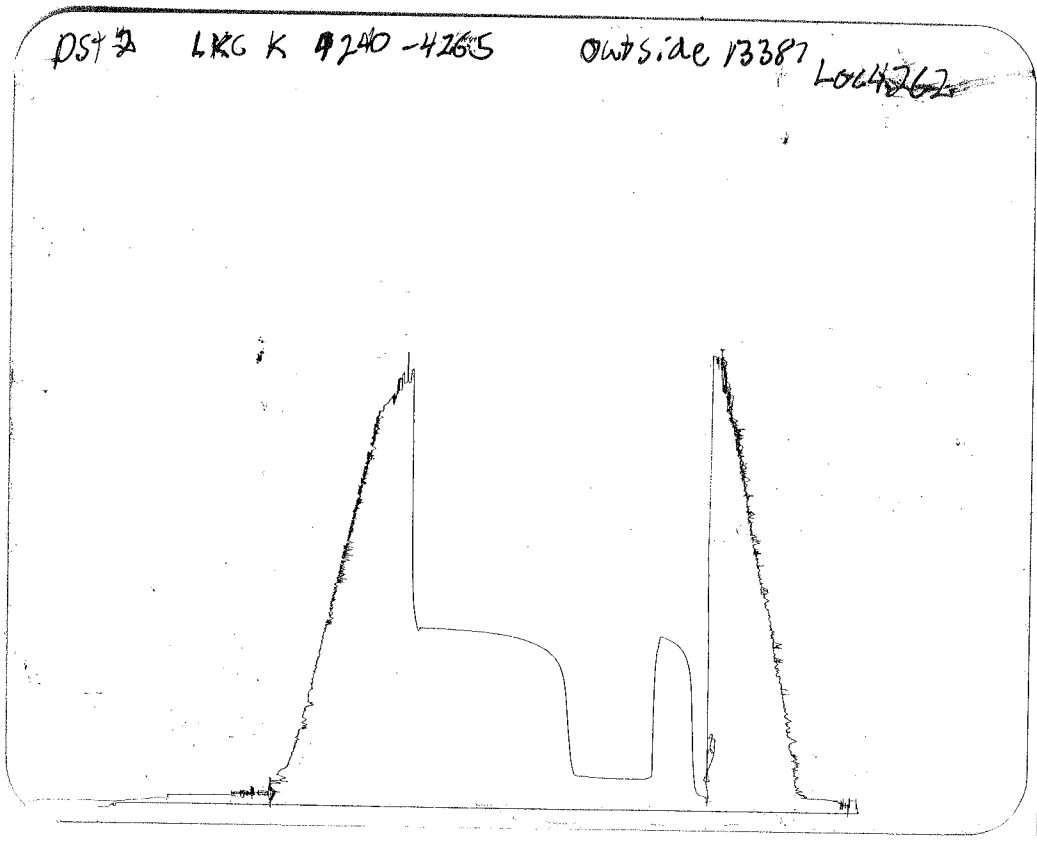
Remarks:

Qualified By: PHIL

RECOVERED: 1 FT. CO
155 FT. OCMW
TOOL SMPL: 5% OIL 20% MUD 75% WATER

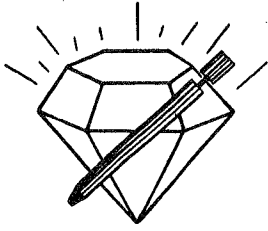
LILA 1-12





This is an actual photograph of recorder chart.

POINT	PRESSURE		PSI
	Field Reading	Elec. Office Reading	
(A) Initial Hydrostatic Mud	2100	2100	PSI
(B) First Initial Flow Pressure.....	29	29	PSI
(C) First Final Flow Pressure	46	46	PSI
(D) Initial Closed-in Pressure	827	827	PSI
(E) Second Initial Flow Pressure.....	52	52	PSI
(F) Second Final Flow Pressure.....	96	96	PSI
(G) Final Closed-in Pressure.....	825	825	PSI
(H) Final Hydrostatic Mud.....	2098	2098	PSI



DIAMOND TESTING
P.O. Box 157
HOISINGTON, KANSAS 67544
(620) 653-7550 • (800) 542-7313
STC 30035.D011

Company Mull Drilling Company, Inc. Lease & Well No. Lila No. 1-12
Elevation 2714 KB Formation Lansing/Kansas City "L" Effective Pay -- Ft. Ticket No. P011
Date 2-8-09 Sec. 12 Twp. 18S Range 28W County Lane State Kansas
Test Approved By Phil Askey Diamond Representative Paul Schilowsky

Formation Test No. 3 Interval Tested from 4,274 ft. to 4,305 ft. Total Depth 4,305 ft.
Packer Depth 4,269 ft. Size 6 3/4 in. Packer Depth -- ft. Size -- in.
Packer Depth 4,274 ft. Size 6 3/4 in. Packer Depth -- ft. Size -- in.
Depth of Selective Zone Set ft.

Top Recorder Depth (Inside) 4,264 ft. Recorder Number 30035 Cap. 5,000 psi
Bottom Recorder Depth (Outside) 4,302 ft. Recorder Number 13387 Cap. 3,900 psi
Below Straddle Recorder Depth ft. Recorder Number Cap. psi

Drilling Contractor WW Drilling, LLC - Rig 10 Drill Collar Length 123 ft. I.D. 2 1/4 in.
Mud Type Chemical Viscosity 50 Weight Pipe Length -- ft. I.D. -- in.
Weight 9.4 Water Loss 11.6 cc. Drill Pipe Length 4,126 ft. I.D. 3 1/2 in.
Chlorides 2,300 P.P.M. Test Tool Length 25 ft. Tool Size 3 1/2 - IF in.
Jars: Make Sterling Serial Number Not Run Anchor Length 31 ft. Size 4 1/2 - FH in.
Did Well Flow? No Reversed Out No Surface Choke Size 1 in. Bottom Choke Size 5/8 in.
Main Hole Size 7 7/8 in. Tool Joint Size 4 1/2 - XH in.

Blow: 1st Open: Weak, surface blow building to 1 in. Weak, surface blow back during shut-in.
2nd Open: Weak, surface blow building to 1 in. No blow back during shut-in.

Recovered 45 ft. of mud = .221400 bbls. (Grind out: 100%-mud)
Recovered ft. of
Recovered ft. of
Recovered ft. of
Recovered ft. of

Remarks Tool Sample Grind Out: 100%-mud

Time Set Packer(s) 7:06 ^{XXM.} P.M. Time Started Off Bottom 9:16 ^{XXM.} P.M. Maximum Temperature 113°
Initial Hydrostatic Pressure (A) 2142 P.S.I.
Initial Flow Period Minutes 10 (B) 29 P.S.I. to (C) 35 P.S.I.
Initial Closed In Period Minutes 30 (D) 822 P.S.I.
Final Flow Period Minutes 30 (E) 38 P.S.I. to (F) 48 P.S.I.
Final Closed In Period Minutes 60 (G) 810 P.S.I.
Final Hydrostatic Pressure (H) 2128 P.S.I.

GENERAL INFORMATION

Client Information:

Company: MULL DRLG. CO.
Contact: ERNIE MORRISON
Phone: Fax: e-mail:

Site Information:

Contact: PHIL ASKEY
Phone: Fax: e-mail:

Well Information:

Name: LILA 1-12
Operator: MULL DRLG. CO.
Location-Downhole: DST #3 LKC L 4274- 4305
Location-Surface: SEC 12 / 18 W / 28 S

Test Information:

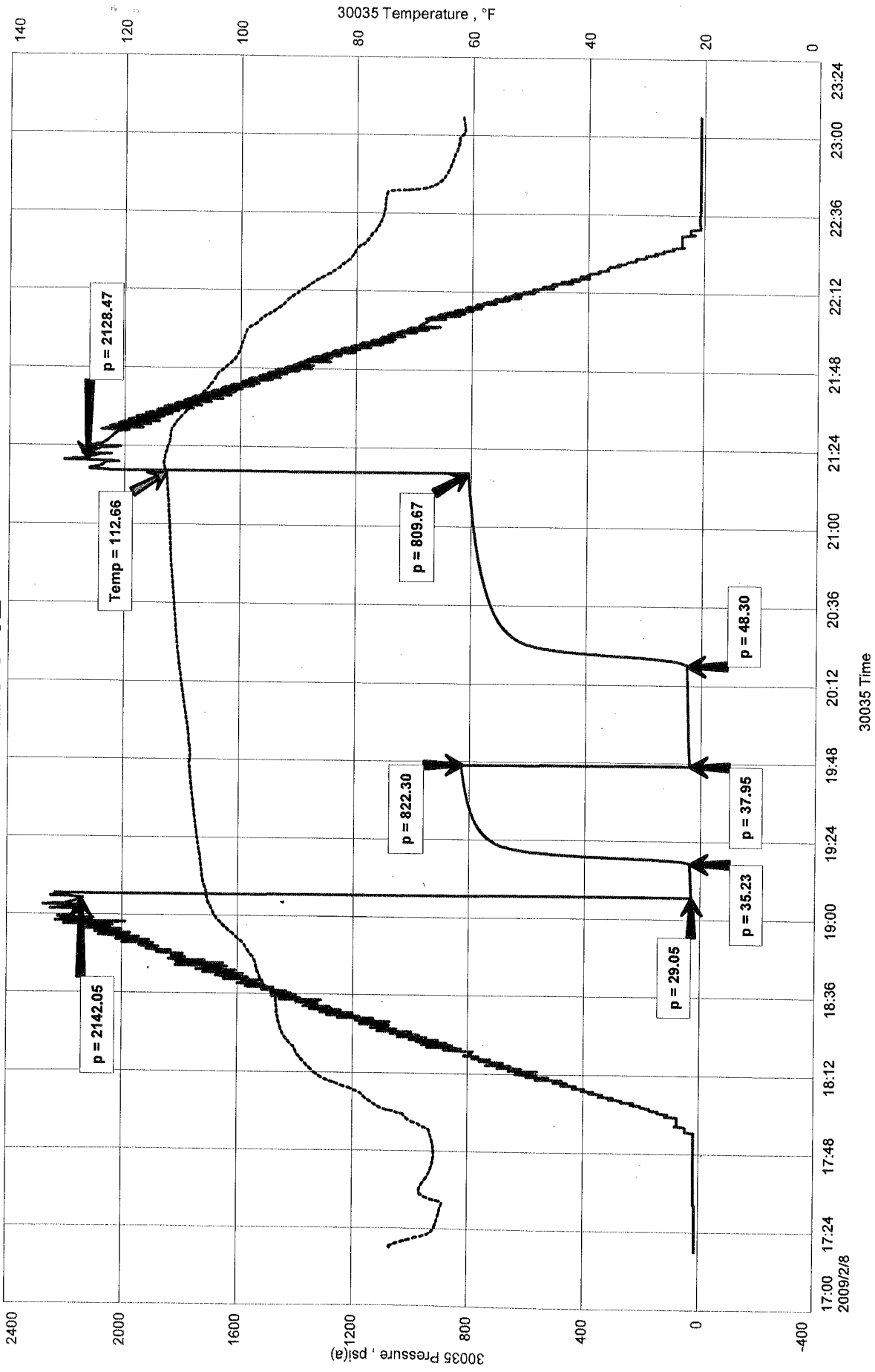
Company: DIAMOND TESTING
Representative: PAUL
Supervisor: PHIL ASKEY
Test Type: Drill Stem Test Job Number: P011
Test Unit: NO. 1
Start Date: 2009/02/08 Start Time: 17:17:00
End Date: 2009/02/08 End Time: 23:07:00
Report Date: 2009/02/08 Prepared By: PAUL
Remarks: Qualified By: PHIL

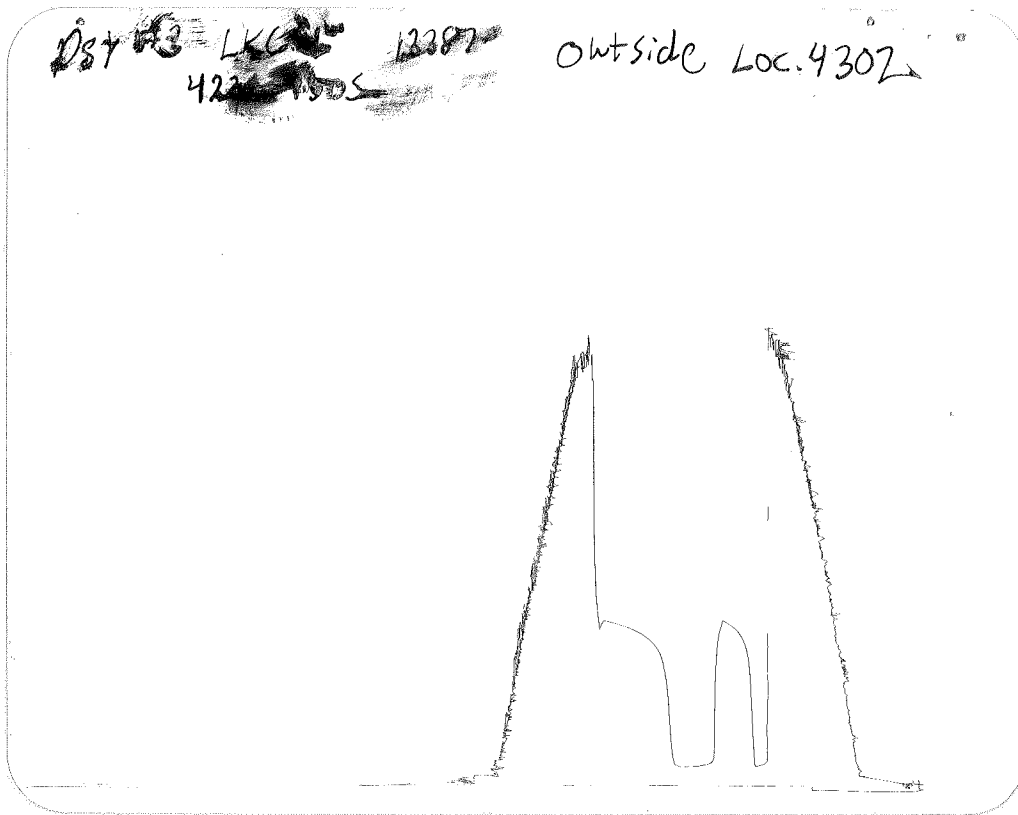
RECOVERED: 45 FT. MUD
TOOL SMPL: 100% MUD
45 FT. FLUID TOTAL

MULL DRILG. CO.
DST #3 LKC L 4274 - 4305
Start Test Date: 2009/02/08
Final Test Date: 2009/02/08

LILA 1-12
Formation: DST#3 LKC L 4274 - 4305
Job Number: P011

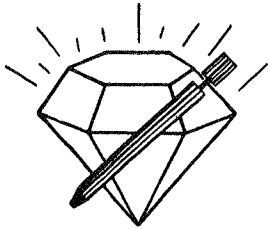
LILA 1-12





This is an actual photograph of recorder chart.

POINT	PRESSURE		PSI
	Field Reading	Elec. Office Reading	
(A) Initial Hydrostatic Mud	2142	2142	PSI
(B) First Initial Flow Pressure.....	29	29	PSI
(C) First Final Flow Pressure	35	35	PSI
(D) Initial Closed-in Pressure	822	822	PSI
(E) Second Initial Flow Pressure.....	38	38	PSI
(F) Second Final Flow Pressure.....	48	48	PSI
(G) Final Closed-in Pressure.....	810	810	PSI
(H) Final Hydrostatic Mud.....	2128	2128	PSI



DIAMOND TESTING
P.O. Box 157
HOISINGTON, KANSAS 67544
(620) 653-7550 • (800) 542-7313
STC 30035.D012

Company Mull Drilling Company, Inc. Lease & Well No. Lila No. 1-12
Elevation 2714 KB Formation Marmaton/Pawnee/Fort Scott Effective Pay --Ft. Ticket No. P012
Date 2-8-09 Sec. 12 Twp. 18S Range 28W County Lane State Kansas

Test Approved By Phil Askey Diamond Representative Paul Schilowsky

Formation Test No. 4 Interval Tested from 4,410 ft. to 4,510 ft. Total Depth 4,510 ft.
Packer Depth 4,405 ft. Size 6 3/4 in. Packer Depth -- ft. Size -- in.
Packer Depth 4,410 ft. Size 6 3/4 in. Packer Depth -- ft. Size -- in.
Depth of Selective Zone Set ft.

Top Recorder Depth (Inside) 4,400 ft. Recorder Number 30035 Cap. 5,000 psi
Bottom Recorder Depth (Outside) 4,507 ft. Recorder Number 13387 Cap. 3,900 psi
Below Straddle Recorder Depth ft. Recorder Number Cap. psi

Drilling Contractor WV Drilling, LLC - Rig 10 Drill Collar Length 123 ft. I.D. 2 1/4 in.
Mud Type Chemical Viscosity 54 Weight Pipe Length -- ft. I.D. -- in.
Weight 9.3 Water Loss 11.2 cc. Drill Pipe Length 4,262 ft. I.D. 3 1/2 in.
Chlorides 2,400 P.P.M. Test Tool Length 25 ft. Tool Size 3 1/2 - IF in.
Jars: Make Sterling Serial Number Not Run Anchor Length 36' perf. w/64' drill pipe Size 4 1/2 - FH in.
Did Well Flow? No Reversed Out No Surface Choke Size 1 in. Bottom Choke Size 5/8 in.
Main Hole Size 7 7/8 in. Tool Joint Size 4 1/2 - XH in.

Blow: 1st Open: Weak, surface blow building to 1/2 in. No blow back during shut-in.
2nd Open: Weak, surface blow. Died in 20 mins. No blow back during shut-in.

Recovered 5 ft. of mud = .024600 bbls. (Grind out: 100%-mud)
Recovered ft. of
Recovered ft. of
Recovered ft. of
Recovered ft. of

Remarks Tool Sample Grind Out: 100%-mud

Time Set Packer(s) 11:28 ~~P.M.~~ ^{A.M.} Time Started Off Bottom 1:38 ~~P.M.~~ ^{A.M.} Maximum Temperature 117°
Initial Hydrostatic Pressure (A) 2208 P.S.I.
Initial Flow Period Minutes 10 (B) 26 P.S.I. to (C) 40 P.S.I.
Initial Closed In Period Minutes 30 (D) 538 P.S.I.
Final Flow Period Minutes 30 (E) 32 P.S.I. to (F) 35 P.S.I.
Final Closed In Period Minutes 60 (G) 268 P.S.I.
Final Hydrostatic Pressure (H) 2206 P.S.I.

GENERAL INFORMATION

Client Information:

Company: MULL DRLG. CO.

Contact: ERNIE MORRISON

Phone: Fax: e-mail:

Site Information:

Contact: PHIL ASKEY

Phone: Fax: e-mail:

Well Information:

Name: LILA 1-12

Operator: MULL DRLG. CO.

Location-Downhole: DST #4 MARM. PAW. FT. SCOTT 4410-4510

Location-Surface: SEC 12 / 18 S / 28 W

Test Information:

Company: DIAMOND TESTING

Representative: PAUL

Supervisor: PHIL ASKEY

Test Type: Drill Stem Test Job Number: P012

Test Unit: NO. 1

Start Date: 2009/02/08 Start Time: 21:26:00

End Date: 2009/02/09 End Time: 04:28:00

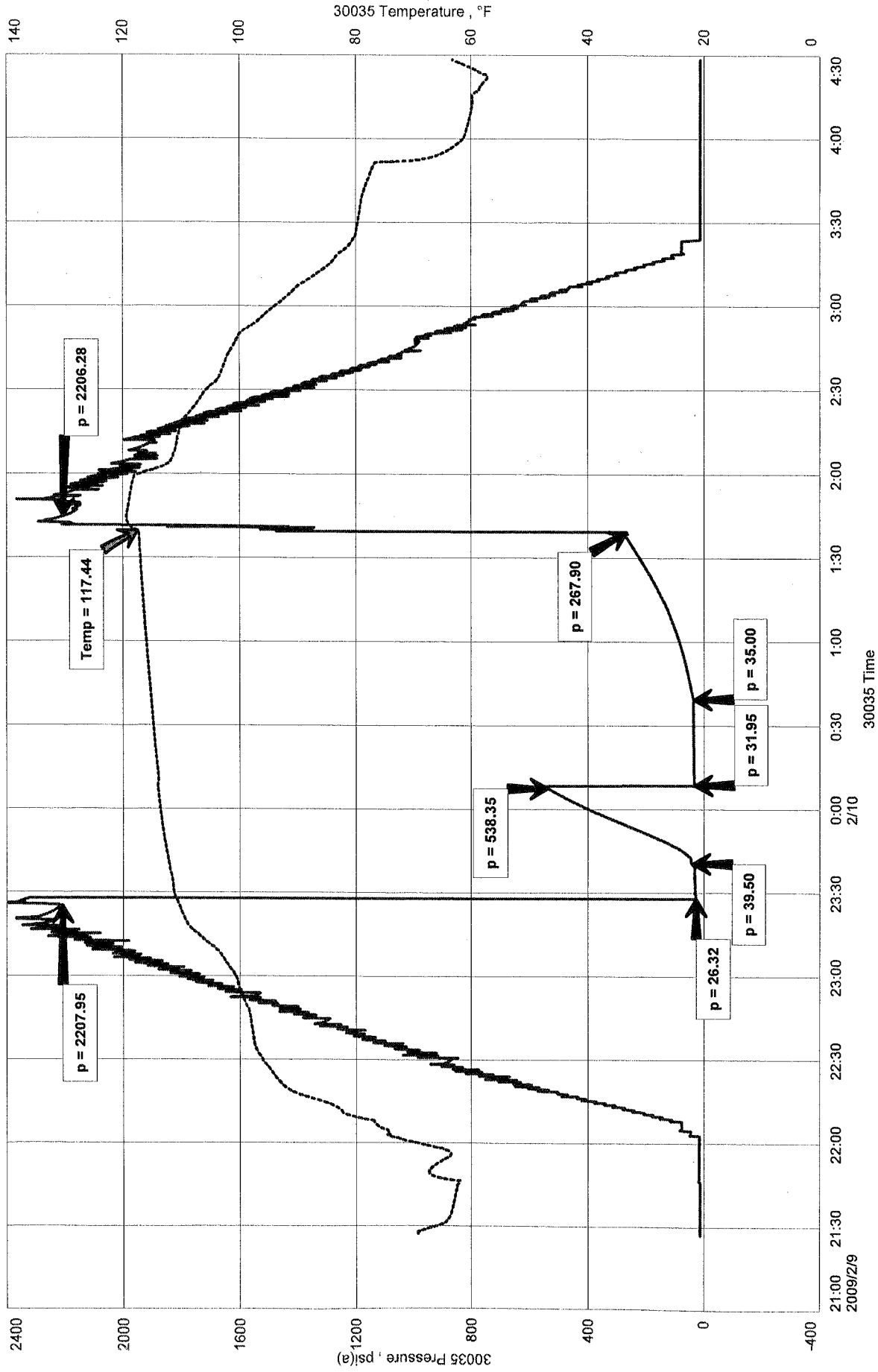
Report Date: 2009/02/09 Prepared By: PAUL

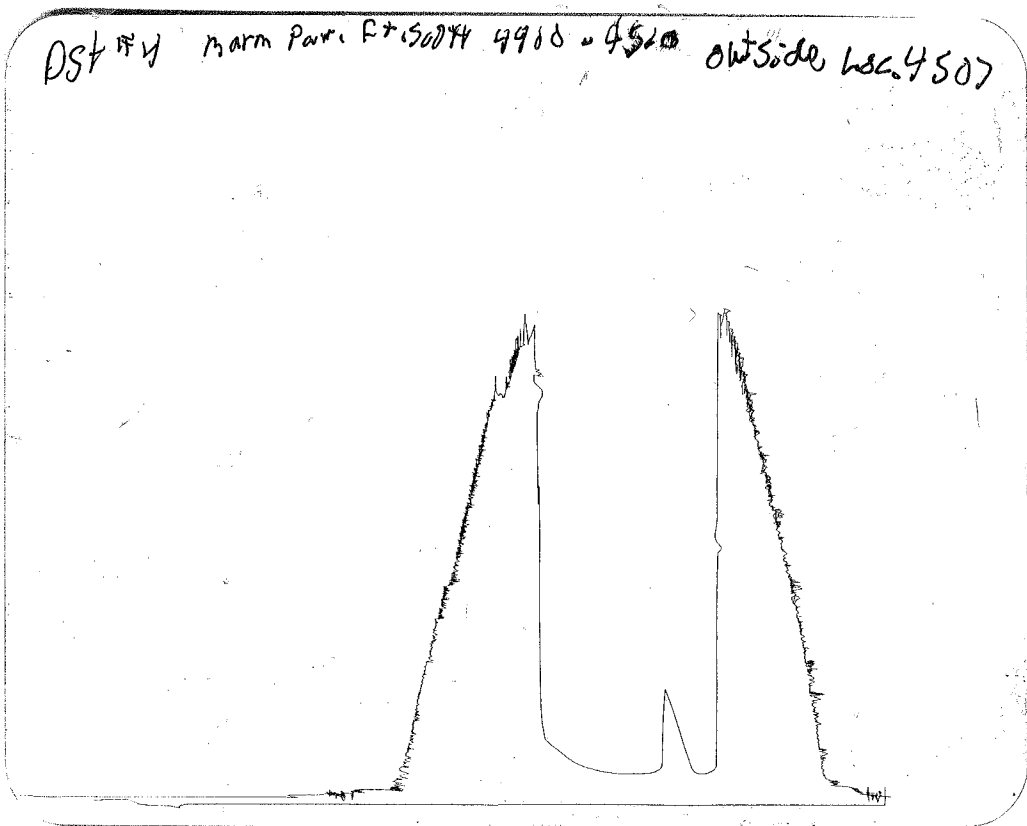
Qualified By: PHIL

Remarks:

RECOVERED: 5 FT. MUD
TOOL SMPL: 100% MUD
5 FT. FLUID TOTAL

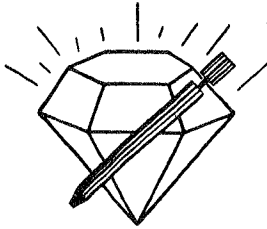
LILA 1-12





This is an actual photograph of recorder chart.

POINT	PRESSURE		
	Field Reading	Elec. Office Reading	
(A) Initial Hydrostatic Mud	2208	2208	PSI
(B) First Initial Flow Pressure	26	26	PSI
(C) First Final Flow Pressure	40	40	PSI
(D) Initial Closed-in Pressure	538	538	PSI
(E) Second Initial Flow Pressure	32	32	PSI
(F) Second Final Flow Pressure	35	35	PSI
(G) Final Closed-in Pressure	268	268	PSI
(H) Final Hydrostatic Mud	2206	2206	PSI



DIAMOND TESTING

P.O. Box 157

HOISINGTON, KANSAS 67544

(620) 653-7550 • (800) 542-7313

STC 30035.D013

Company Mull Drilling Company, Inc. Lease & Well No. Lila No. 1-12

Elevation 2714 KB Formation Cherokee Effective Pay -- Ft. Ticket No. P013

Date 2-11-09 Sec. 12 Twp. 18S Range 28W County Lane State Kansas

Test Approved By Phil Askey Diamond Representative Paul Schilowsky

Formation Test No. 5 Interval Tested from 4,505 ft. to 4,570 ft. Total Depth 4,570 ft.

Packer Depth 4,500 ft. Size 6 3/4 in. Packer Depth -- ft. Size -- in.

Packer Depth 4,505 ft. Size 6 3/4 in. Packer Depth -- ft. Size -- in.

Depth of Selective Zone Set ft.

Top Recorder Depth (Inside) 4,495 ft. Recorder Number 30035 Cap. 5,000 psi

Bottom Recorder Depth (Outside) 4,567 ft. Recorder Number 13387 Cap. 3,900 psi

Below Straddle Recorder Depth ft. Recorder Number Cap. psi

Drilling Contractor WV Drilling, LLC - Rig 10 Drill Collar Length 123 ft. I.D. 2 1/4 in.

Mud Type Chemical Viscosity 55 Weight Pipe Length -- ft. I.D. -- in.

Weight 9.5 Water Loss 10.8 cc. Drill Pipe Length 4,357 ft. I.D. 3 1/2 in.

Chlorides 2,400 P.P.M. Test Tool Length 25 ft. Tool Size 3 1/2 - IF in.

Jars: Make Sterling Serial Number Not Run Anchor Length 33' perf. w/32' drill pipe Size 4 1/2 - FH in.

Did Well Flow? No Reversed Out No Surface Choke Size 1 in. Bottom Choke Size 5/8 in.

Main Hole Size 7 7/8 in. Tool Joint Size 4 1/2 - XH in.

Blow: 1st Open: Weak, surface blow building to 3/4 in. No blow back during shut-in.

2nd Open: Weak, surface blow building to 1/2 in. No blow back during shut-in.

Recovered 10 ft. of mud = .049200 bbls. (Grind out: 100%-mud)

Recovered ft. of

Recovered ft. of

Recovered ft. of

Recovered ft. of

Remarks Tool Sample Grind Out: 100%-mud

Time Set Packer(s) 3:43 ~~P.M.~~ ^{A.M.} Time Started Off Bottom 5:53 ~~P.M.~~ ^{A.M.} Maximum Temperature 115°

Initial Hydrostatic Pressure (A) 2321 P.S.I.

Initial Flow Period Minutes 10 (B) 28 P.S.I. to (C) 35 P.S.I.

Initial Closed In Period Minutes 30 (D) 869 P.S.I.

Final Flow Period Minutes 30 (E) 29 P.S.I. to (F) 36 P.S.I.

Final Closed In Period Minutes 60 (G) 785 P.S.I.

Final Hydrostatic Pressure (H) 2323 P.S.I.

GENERAL INFORMATION

Client Information:

Company: MULL DRLG. CO.

Contact: ERNIE MORRISON

Phone: Fax: e-mail:

Site Information:

Contact: PHIL ASKEY

Phone: Fax: e-mail:

Well Information:

Name: LILA 1-12

Operator: MULL DRLG. CO.

Location-Downhole: DST #5 4505-4570 CHEROKEE

Location-Surface: SEC 12 / 18 W / 28 S

Test Information:

Company: DIAMOND TESTING

Representative: PAUL

Supervisor: PHIL ASKEY

Test Type: Drill Stem Test

Job Number: P013

Test Unit: NO. 1

Start Date: 2009/02/11

Start Time: 01:12:00

End Date: 2009/02/11

End Time: 08:15:00

Report Date: 2009/02/11

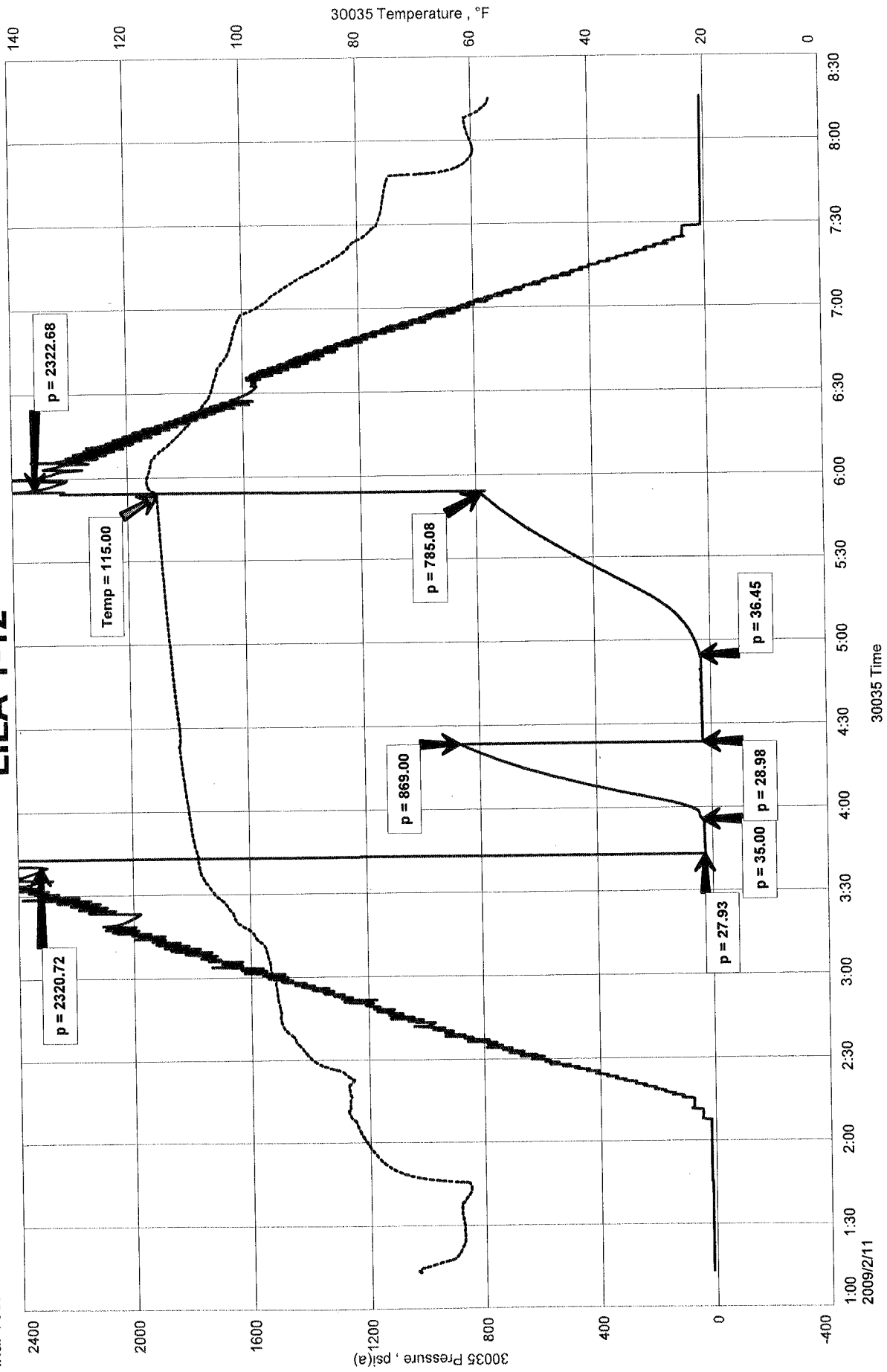
Prepared By: PAUL

Remarks:

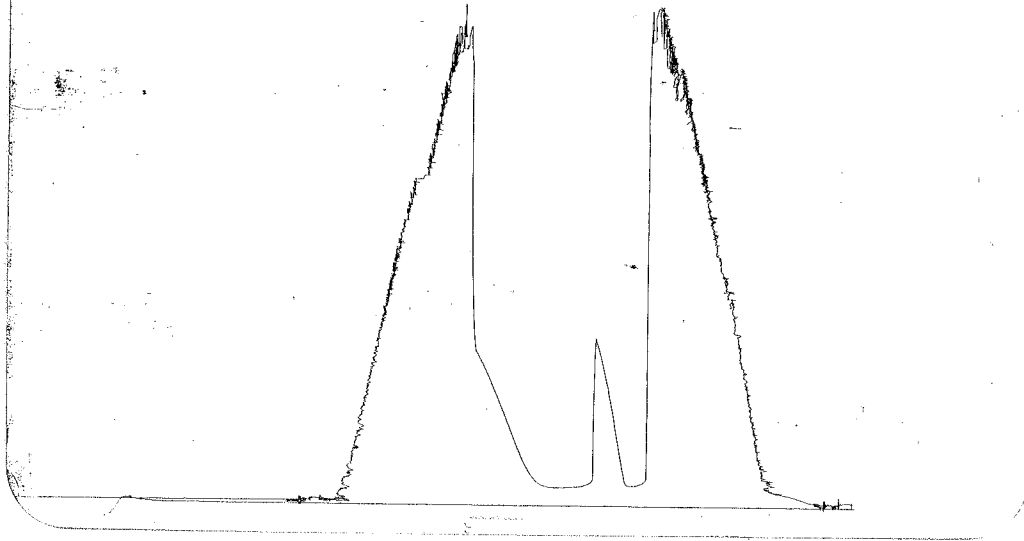
Qualified By: PHIL

RECOVERED: 10 FT. MUD
TOOL SMPL 100%MUD
10 FT. OF FLUID TOTAL

LILA 1-12

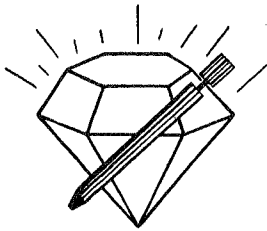


R3711 S 4505-4570 outside loc. 4567



This is an actual photograph of recorder chart.

POINT	PRESSURE Elec.		
	Field Reading	Office Reading	
(A) Initial Hydrostatic Mud	2321	2321	PSI
(B) First Initial Flow Pressure	28	28	PSI
(C) First Final Flow Pressure	35	35	PSI
(D) Initial Closed-in Pressure	869	869	PSI
(E) Second Initial Flow Pressure	29	29	PSI
(F) Second Final Flow Pressure	36	36	PSI
(G) Final Closed-in Pressure	785	785	PSI
(H) Final Hydrostatic Mud	2323	2323	PSI



DIAMOND TESTING

P.O. Box 157
HOISINGTON, KANSAS 67544
(620) 653-7550 • (800) 542-7313
STC 30035.D014

Company Mull Drilling Company, Inc. Lease & Well No. Lila No. 1-12

Elevation 2714 KB Formation Cherokee Effective Pay Ft. Ticket No. P014

Date 2-11-09 Sec. 12 Twp. 18S Range 28W County Lane State Kansas

Test Approved By Phil Askey Diamond Representative Paul Schilowsky

Formation Test No. 6 Interval Tested from 4,505 ft. to 4,580 ft. Total Depth 4,580 ft.

Packer Depth 4,500 ft. Size 6 3/4 in. Packer Depth ft. Size in.

Packer Depth 4,505 ft. Size 6 3/4 in. Packer Depth ft. Size in.

Depth of Selective Zone Set ft.

Top Recorder Depth (Inside) 4,495 ft. Recorder Number 30035 Cap. 5,000 psi

Bottom Recorder Depth (Outside) 4,577 ft. Recorder Number 13387 Cap. 3,900 psi

Below Straddle Recorder Depth ft. Recorder Number Cap. psi

Drilling Contractor WW Drilling, LLC - Rig 10 Drill Collar Length 123 ft. I.D. 2 1/4 in.

Mud Type Chemical Viscosity 57 Weight Pipe Length ft. I.D. in.

Weight 9.5 Water Loss 11.2 cc. Drill Pipe Length 4,357 ft. I.D. 3 1/2 in.

Chlorides 2,300 P.P.M. Test Tool Length 25 ft. Tool Size 3 1/2 - IF in.

Jars: Make Sterling Serial Number Not Run Anchor Length 43' perf. w/32' drill pipe Size 4 1/2 - FH in.

Did Well Flow? No Reversed Out No Surface Choke Size 1 in. Bottom Choke Size 5/8 in.

Main Hole Size 7 7/8 in. Tool Joint Size 4 1/2 - XH in.

Blow: 1st Open: Weak, surface blow. Did not build. No blow back during shut-in.

2nd Open: Weak, surface blow. Did not build. No blow back during shut-in.

Recovered 10 ft. of mud = .049200 bbls. (Grind out: 100%-mud)

Recovered ft. of

Recovered ft. of

Recovered ft. of

Recovered ft. of

Remarks Tool Sample Grind Out: 100%-mud

Time Set Packer(s) 4:58 ^{AM}P.M. Time Started Off Bottom 7:08 ^{AM}P.M. Maximum Temperature 114 °

Initial Hydrostatic Pressure (A) 2288 P.S.I.

Initial Flow Period Minutes 10 (B) 27 P.S.I. to (C) 33 P.S.I.

Initial Closed In Period Minutes 30 (D) 1223 P.S.I.

Final Flow Period Minutes 30 (E) 35 P.S.I. to (F) 45 P.S.I.

Final Closed In Period Minutes 60 (G) 1023 P.S.I.

Final Hydrostatic Pressure (H) 2287 P.S.I.

GENERAL INFORMATION

Client Information:

Company: MULL DRLG. CO.
Contact: ERNIE MORRISON
Phone: Fax: e-mail:

Site Information:

Contact: PHIL ASKEY
Phone: Fax: e-mail:

Well Information:

Name: LILA 1-12
Operator: MULL DRLG. CO.
Location-Downhole: DST #6 4505 - 4580 CHEROKEE
Location-Surface: SEC 12 / 18 S / 28 W

Test Information:

Company: DIAMOND TESTING
Representative: PAUL
Supervisor: PHIL ASKEY
Test Type: Drill Stem Test Job Number: P014
Test Unit: NO, 1
Start Date: 2009/02/11 Start Time: 15:01:00
End Date: 2009/02/11 End Time: 21:12:00
Report Date: 2009/02/11 Prepared By: PAUL
Qualified By: PHIL

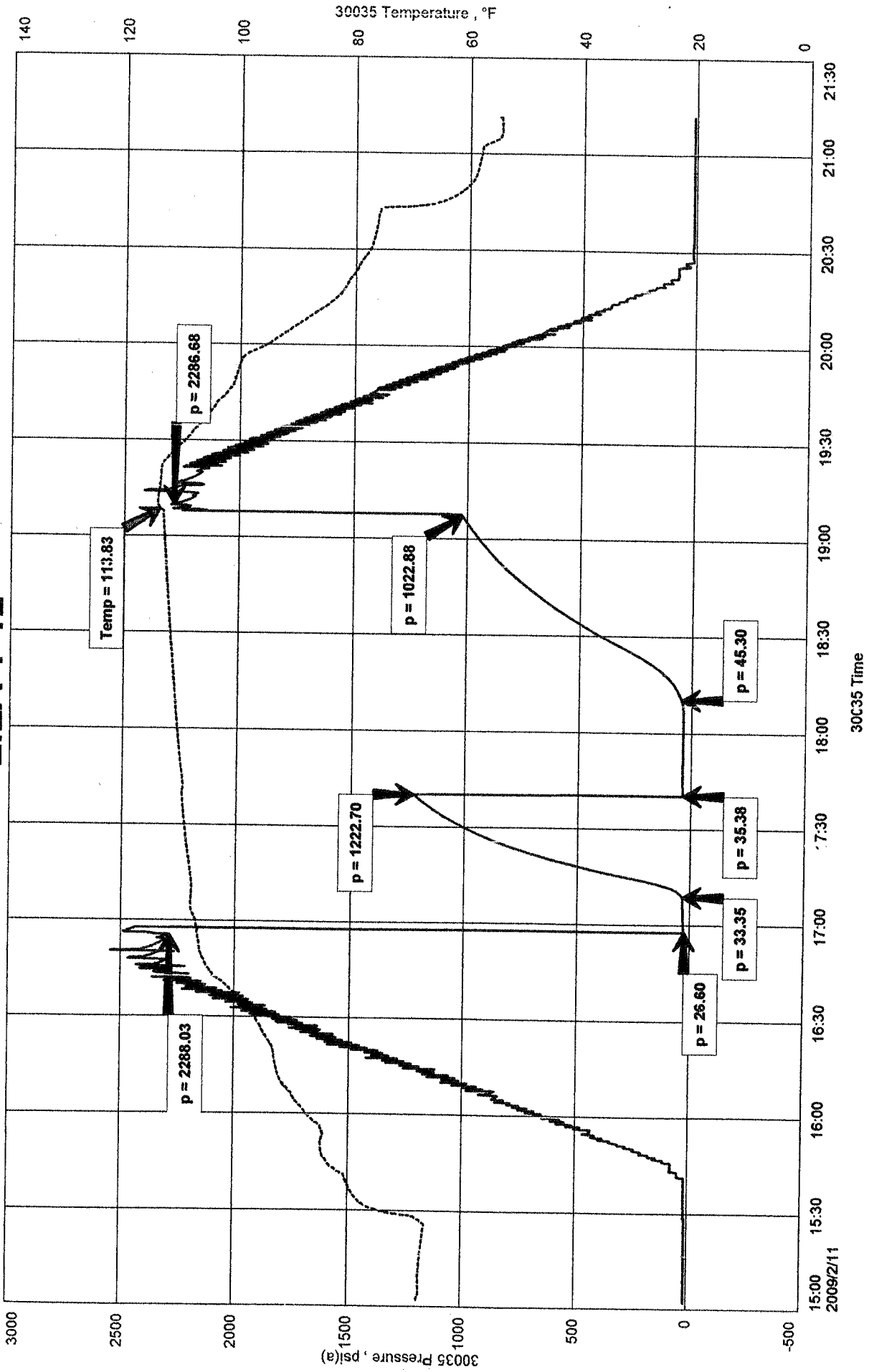
Remarks:

RECOVERED: 10 FT, MUD
TOOLSMPL: 100% MUD
10 FT. OF FLUID TOTAL

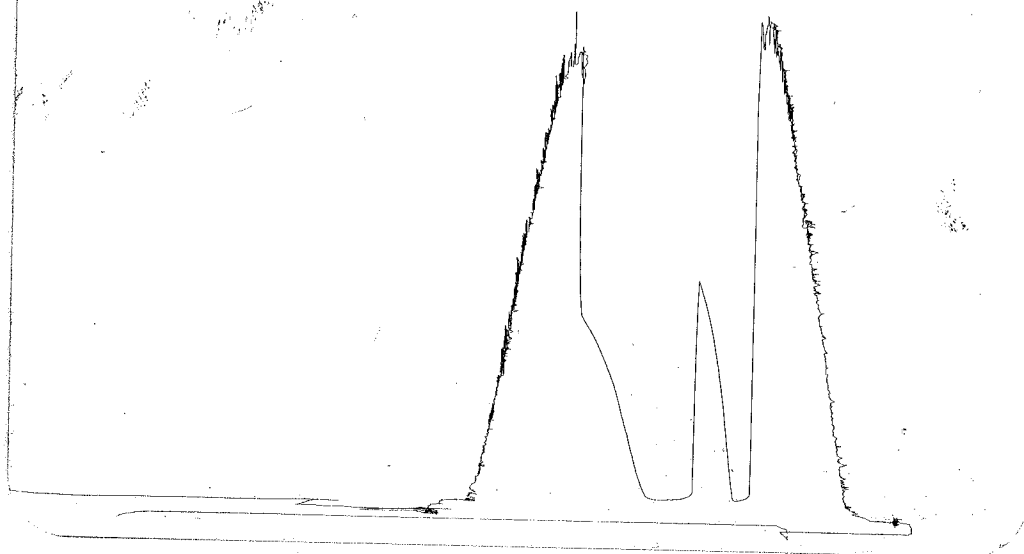
MULL DRILG. CO.
DST #6 4505 - 4580 CHEROKEE
Start Test Date: 2009/02/11
Final Test Date: 2009/02/11

LILA 1-12
Formation: DST # 6 4505 - 4580 CHEROKEE
Job Number: P014

LILA 1-12



DS# 6 9505-4580 @ Inside 73387 Log. 4577



This is an actual photograph of recorder chart.

POINT	PRESSURE		Elec. Office Reading	PSI
	Field Reading			
(A) Initial Hydrostatic Mud	2288	2288		PSI
(B) First Initial Flow Pressure.....	27	27		PSI
(C) First Final Flow Pressure	33	33		PSI
(D) Initial Closed-in Pressure	1223	1223		PSI
(E) Second Initial Flow Pressure.....	35	35		PSI
(F) Second Final Flow Pressure.....	45	45		PSI
(G) Final Closed-in Pressure.....	1023	1023		PSI
(H) Final Hydrostatic Mud.....	2287	2287		PSI