

15-101-22128

2-18s-28w



DIAMOND TESTING
P.O. Box 157
HOISINGTON, KANSAS 67544
(620) 653-7550 • (800) 542-7313

Company Mull Drilling Co., Inc. Lease & Well No. Reifschneider "A" #1-2

Elevation 2735 KB Formation Lansing/Kansas City "L" Effective Pay -- Ft. Ticket No. 2504

Date 10-09-08 Sec. 2 Twp. 18S Range 28W County Lane State Kansas

Test Approved By Kevin L. Kessler Diamond Representative Roger D. Friedly

Formation Test No. 1 Interval Tested from 4,280 ft. to 4,330 ft. Total Depth 4,330 ft.

Packer Depth 4,275 ft. Size 6 3/4 in. Packer Depth -- ft. Size -- in.

Packer Depth 4,280 ft. Size 6 3/4 in. Packer Depth -- ft. Size -- in.

Depth of Selective Zone Set ft.

Top Recorder Depth (Inside) 4,268 ft. Recorder Number 1150 Cap. 5,000 psi

Bottom Recorder Depth (Outside) 4,327 ft. Recorder Number 3815 Cap. 5,700 psi

Below Straddle Recorder Depth ft. Recorder Number Cap. psi

Drilling Contractor Duke Drilling Co., Inc. - Rig 4 Drill Collar Length -- ft. I.D. -- in.

Mud Type Chemical Viscosity 53 Weight Pipe Length -- ft. I.D. -- in.

Weight 9.3 Water Loss 11.2 cc. Drill Pipe Length 4,254 ft. I.D. 3 1/2 in.

Chlorides 2,200 P.P.M. Test Tool Length 26 ft. Tool Size 3 1/2 - IF in.

Jars: Make Sterling Serial Number Not Run Anchor Length 20' perf. w/30' drill pipe Size 4 1/2 - FH in.

Did Well Flow? No Reversed Out No Surface Choke Size 1 in. Bottom Choke Size 5/8 in.

Main Hole Size 7 7/8 in. Tool Joint Size 4 1/2 - XH in.

Blow: 1st Open: Weak, 1/2 in., blow increasing to 5 1/2 ins. No blow back during shut-in.

2nd Open: Weak, surface blow increasing. Off bottom of bucket in 30 1/2 mins. No blow back during shut-in.

Recovered 1 ft. of clean oil = .014230 bbls. (Gravity: 34 @ 60°)

Recovered 49 ft. of muddy water with a scum of oil = .697270 bbls. (Grind out: 35%-mud; 65%-water)

Recovered 248 ft. of muddy water with oil specks = 3.529040 bbls. (Grind out: 5%-mud; 95%-water) Chlorides: 38,500 Ppm

Recovered 298 ft. of TOTAL FLUID = 4.240540 bbls.

Recovered ft. of

Remarks Tool Sample Grind Out: 8%-mud; 92%-water with oil specks

Time Set Packer(s) 12:08 ~~P.M.~~ ^{A.M.} Time Started Off Bottom 3:48 ~~P.M.~~ ^{A.M.} Maximum Temperature 127°

Initial Hydrostatic Pressure (A) 2073 P.S.I.

Initial Flow Period Minutes 10 (B) 9 P.S.I. to (C) 38 P.S.I.

Initial Closed In Period Minutes 30 (D) 946 P.S.I.

Final Flow Period Minutes 60 (E) 43 P.S.I. to (F) 152 P.S.I.

Final Closed In Period Minutes 120 (G) 887 P.S.I.

Final Hydrostatic Pressure (H) 2076 P.S.I.

Diamond Testing

General Information Report

Page 2 of 2 Pages

General Information

Company Name	MULL DRILLING COMPANY, INC.	Job Number	
Contact	ERNIE MORRISON	Representative	ROGER D. FRIEDLY
Well Name	REIFSCHNEIDER 'A' #1-2	Well Operator	MULL DRILLING COMPANY, INC.
Unique Well ID	DST #1 LKC 'L' 4,280' - 4,330'	Report Date	2008/10/09
Surface Location		Prepared By	ROGER D. FRIEDLY
Well License Number			
Field	WILDCAT		
Well Type			

Test Information

Test Type	Drill Stem Test
Formation	LKC 'L'
Well Fluid Type	
Start Test Date	2008/10/08
Final Test Date	2008/10/09
Flow Duration	
Gauge Name	1150
Gauge Serial Number	
Temperature at Run Depth	°C

Start Test Time	21:19:00
Final Test Time	06:29:00

Test Results

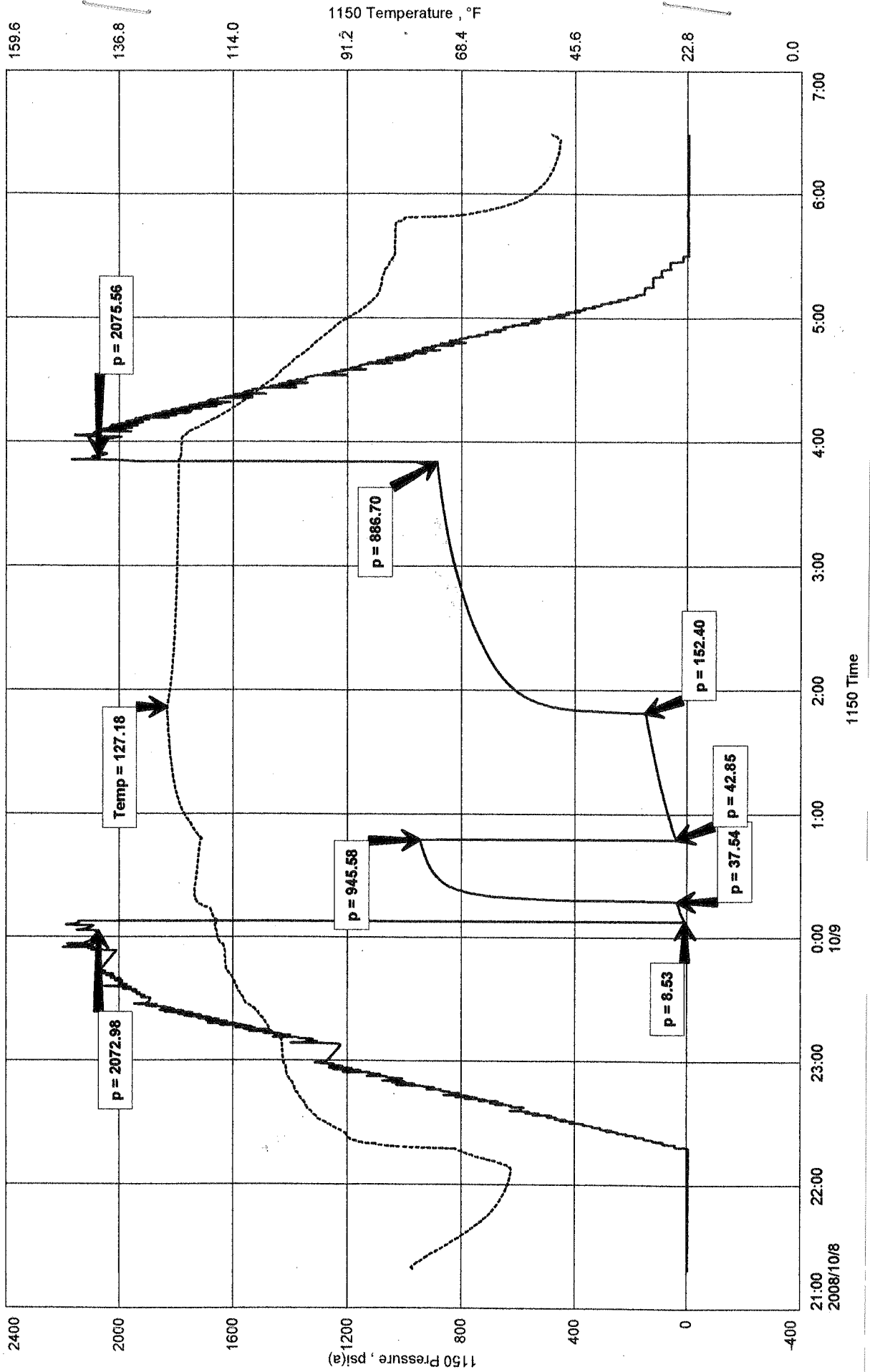
RECOVERED: 1' CO 34 GRAVITY @ 60 deg.
49' MW 35% MUD, 65% WTR - SCUM OF OIL
248' MW 5% MUD, 95% WTR - OIL SPECKED (CHLORIDES 38,500 Ppm)
298' TOTAL FLUID

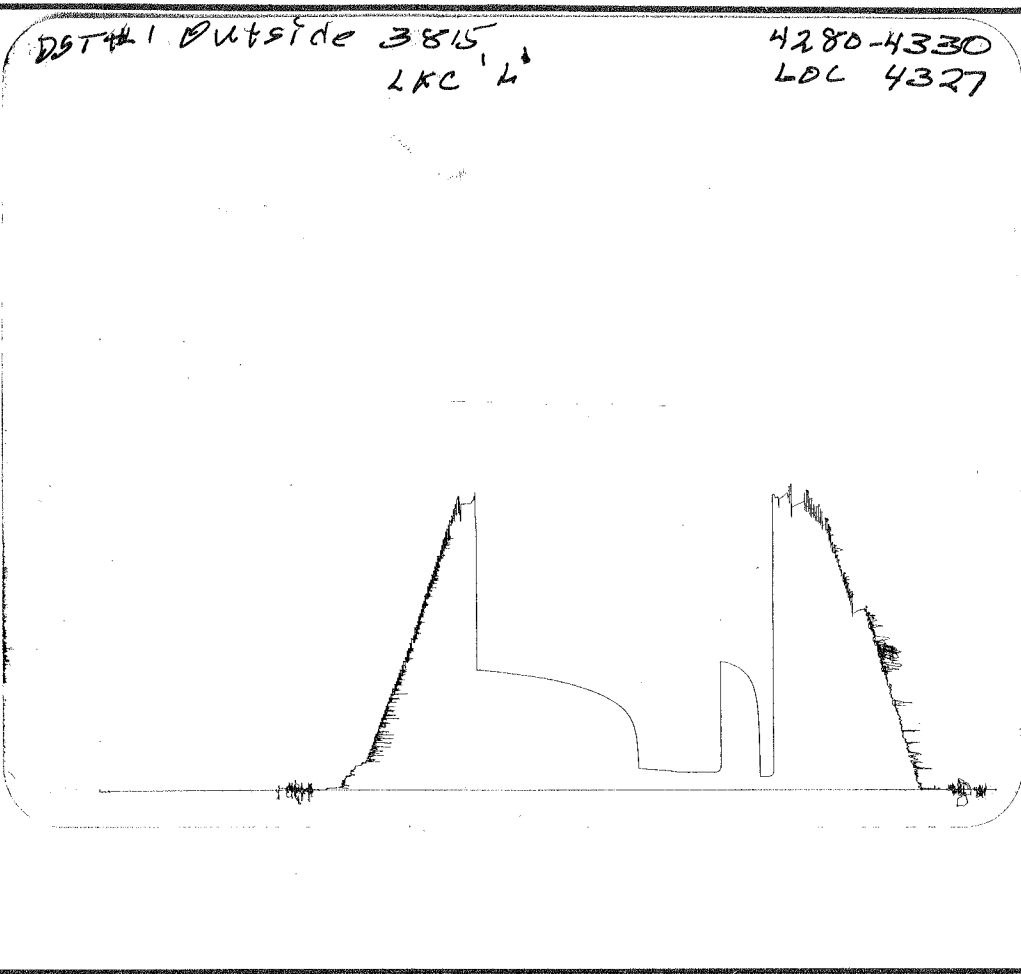
TOOL SAMPLE: 8% MUD, 92% WTR - OIL SPECKED

MULL DRILLING COMPANY, INC.
 DST #1 LKC 'L' 4,280' - 4,330'
 Start Test Date: 2008/10/08
 Final Test Date: 2008/10/09

REIFSCHNEIDER 'A' #1-2
 Formation: LKC 'L'

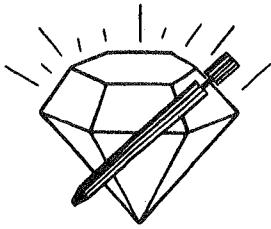
REIFSCHNEIDER 'A' #1-2





This is an actual photograph of recorder chart.

POINT	PRESSURE		Elec. Office Reading	PSI
	Field Reading			
(A) Initial Hydrostatic Mud	2073	2073		PSI
(B) First Initial Flow Pressure.....	9	9		PSI
(C) First Final Flow Pressure	38	38		PSI
(D) Initial Closed-in Pressure	946	946		PSI
(E) Second Initial Flow Pressure	43	43		PSI
(F) Second Final Flow Pressure.....	152	152		PSI
(G) Final Closed-in Pressure.....	887	887		PSI
(H) Final Hydrostatic Mud	2076	2076		PSI



DIAMOND TESTING
P.O. Box 157
HOISINGTON, KANSAS 67544
(620) 653-7550 • (800) 542-7313

Company Mull Drilling Co., Inc. Lease & Well No. Reifschneider "A" #1-2
Elevation 2735 KB Formation Marmaton Effective Pay -- Ft. Ticket No. 2505
Date 10-09-08 Sec. 2 Twp. 18S Range 28W County Lane State Kansas

Test Approved By Kevin L. Kessler Diamond Representative Roger D. Friedly

Formation Test No. 2 Interval Tested from 4,325 ft. to 4,410 ft. Total Depth 4,410 ft.
Packer Depth 4,320 ft. Size 6 3/4 in. Packer Depth -- ft. Size -- in.
Packer Depth 4,325 ft. Size 6 3/4 in. Packer Depth -- ft. Size -- in.

Depth of Selective Zone Set ft.

Top Recorder Depth (Inside) 4,313 ft. Recorder Number 1150 Cap. 5,000 psi
Bottom Recorder Depth (Outside) 4,407 ft. Recorder Number 3815 Cap. 5,700 psi
Below Straddle Recorder Depth ft. Recorder Number Cap. psi

Drilling Contractor Duke Drilling Co., Inc. - Rig 4 Drill Collar Length -- ft. I.D. -- in.
Mud Type Chemical Viscosity 65 Weight Pipe Length -- ft. I.D. -- in.
Weight 9.3 Water Loss 11.2 cc. Drill Pipe Length 4,299 ft. I.D. 3 1/2 in.
Chlorides 2,900 P.P.M. Test Tool Length 26 ft. Tool Size 3 1/2 - IF in.
Jars: Make Sterling Serial Number Not Run Anchor Length 23' perf. w/62' drill pipe Size 4 1/2 - FH in.
Did Well Flow? No Reversed Out No Surface Choke Size 1 in. Bottom Choke Size 5/8 in.
Main Hole Size 7 7/8 in. Tool Joint Size 4 1/2 - XH in.

Blow: 1st Open: Weak, 1/8 in., blow increasing to 4 ins. Weak surface blow back during shut-in.
2nd Open: Weak surface blow increasing. Off bottom of bucket in 28 1/2 mins. Weak surface blow back during shut-in.

Recovered 120 ft. of gas in pipe
Recovered 30 ft. of clean oil = .426900 bbls. (Gravity: 31 @ 60°)
Recovered 30 ft. of oil cut watery mud = .426900 bbls. (Grind out: 6%-oil; 42%-water; 52%-mud)
Recovered 120 ft. of muddy water with oil specks = 1.707600 bbls. (Grind out: 12%-mud; 88%-water) Chlorides: 34,000 Ppm
Recovered 180 ft. of TOTAL FLUID = 2.561400 bbls.
Remarks Tool Sample Grind Out: 12%-oil; 25%-mud; 63%-water

Time Set Packer(s) 7:15 ~~AM~~ P.M. Time Started Off Bottom 10:55 ~~AM~~ P.M. Maximum Temperature 128°
Initial Hydrostatic Pressure (A) 2108 P.S.I.
Initial Flow Period Minutes 10 (B) 7 P.S.I. to (C) 27 P.S.I.
Initial Closed In Period Minutes 30 (D) 1008 P.S.I.
Final Flow Period Minutes 60 (E) 25 P.S.I. to (F) 87 P.S.I.
Final Closed In Period Minutes 120 (G) 991 P.S.I.
Final Hydrostatic Pressure (H) 2108 P.S.I.

Diamond Testing

General Information Report

Page 2 of 2 Pages

General Information

Company Name MULL DRILLING COMPANY, INC.
Contact MARK A. SHREVE
Well Name REIFSCHNEIDER 'A' #1-2
Unique Well ID DST#2 MARMATON 4,325' - 4,410'
Surface Location SEC 2-18S-28W LANE COUNTY
Well License Number
Field WILDCAT
Well Type Vertical

Job Number
Representative ROGER D. FRIEDLY
Well Operator MULL DRILLING CONMPANY, INC.
Report Date 2008/10/10
Prepared By ROGER D. FRIEDLY

Test Information

Test Type Drill Stem Test
Formation DST #2 MARMATON 4,325' - 4,410'
Well Fluid Type

Start Test Time 17:00:00
Final Test Time 01:55:00

Start Test Date 2008/10/09
Final Test Date 2008/10/10
Flow Duration

Gauge Name 1150
Gauge Serial Number
Temperature at Run Depth °C

Test Results

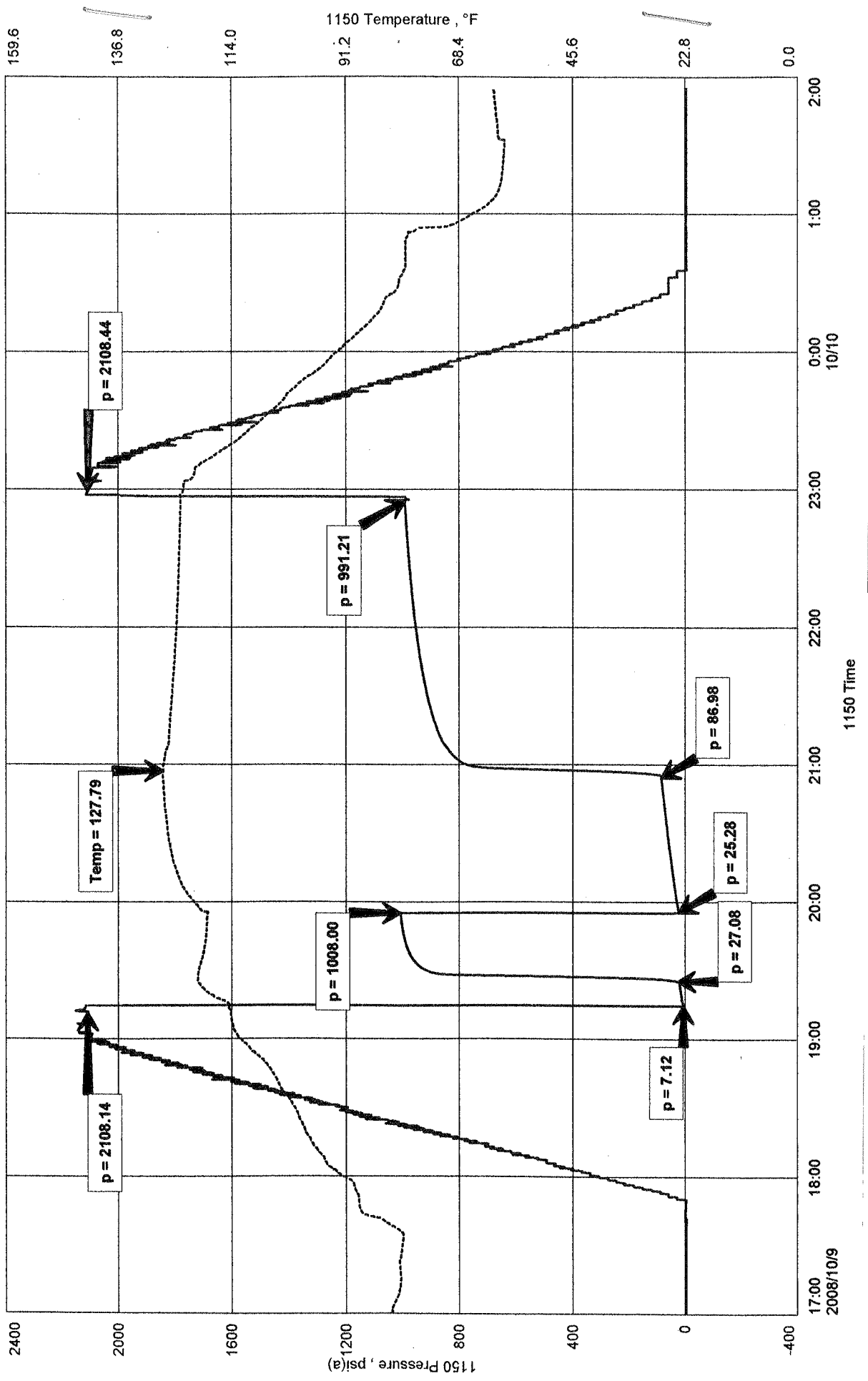
RECOVERED: 120' GAS IN PIPE
30' CO 31 GRAVITY @ 60 deg
30' OCWM 6% OIL, 42% WTR, 52% MUD
120' MW 12% MUD, 88% WTR - OIL SPECKS - CHLORIDES 34,000 Ppm
180' TOTAL FLUID

TOOL SAMPLE: 12% OIL, 25% MUD, 63% WTR

MULL DRILLING COMPANY, INC.
 DST#2 MARMATON 4,325' - 4,410'
 Start Test Date: 2008/10/09
 Final Test Date: 2008/10/10

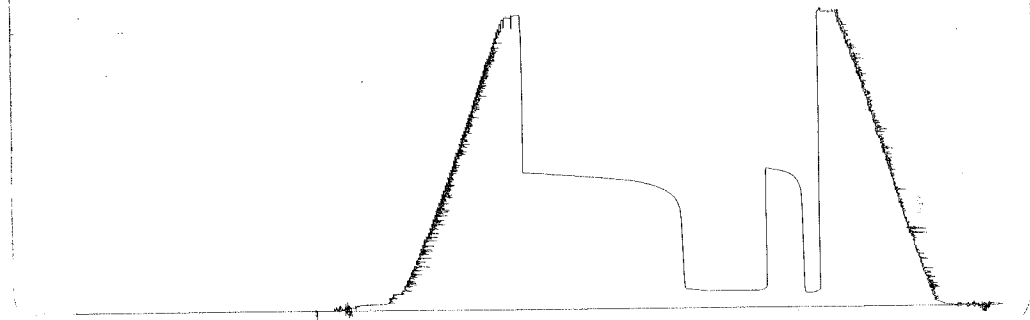
REIFSCHNEIDER 'A' #1-2
 Formation: DST #2 MARMATON 4,325' - 4,410'

REIFSCHNEIDER 'A' #1-2



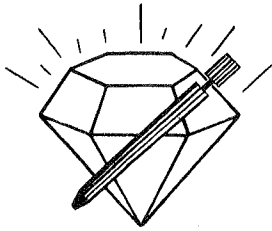
DST # 2 Outside 3815
ITM

4325 - 4410
LBC 4407



This is an actual photograph of recorder chart.

POINT	PRESSURE		Elec. Office Reading	PSI
	Field Reading			
(A) Initial Hydrostatic Mud	2108	2108		PSI
(B) First Initial Flow Pressure	7	7		PSI
(C) First Final Flow Pressure	27	27		PSI
(D) Initial Closed-in Pressure	1008	1008		PSI
(E) Second Initial Flow Pressure	25	25		PSI
(F) Second Final Flow Pressure	87	87		PSI
(G) Final Closed-in Pressure	991	991		PSI
(H) Final Hydrostatic Mud	2108	2108		PSI



DIAMOND TESTING

P.O. Box 157

HOISINGTON, KANSAS 67544

(620) 653-7550 • (800) 542-7313

Page 1 of 2 Pages

Company Mull Drilling Co., Inc. Lease & Well No. Reifschneider "A" #1-2

Elevation 2735 KB Formation Fort Scott/Cherokee Effective Pay -- Ft. Ticket No. 2506

Date 10-10-08 Sec. 2 Twp. 18S Range 28W County Lane State Kansas

Test Approved By Kevin L. Kessler Diamond Representative Roger D. Friedly

Formation Test No. 3 Interval Tested from 4,490 ft. to 4,590 ft. Total Depth 4,590 ft.

Packer Depth 4,485 ft. Size 6 3/4 in. Packer Depth -- ft. Size -- in.

Packer Depth 4,490 ft. Size 6 3/4 in. Packer Depth -- ft. Size -- in.

Depth of Selective Zone Set ft.

Top Recorder Depth (Inside) 4,478 ft. Recorder Number 1150 Cap. 5,000 psi

Bottom Recorder Depth (Outside) 4,587 ft. Recorder Number 3815 Cap. 5,700 psi

Below Straddle Recorder Depth ft. Recorder Number Cap. psi

Drilling Contractor Duke Drilling Co., Inc. - Rig 4 Drill Collar Length -- ft. I.D. -- in.

Mud Type Chemical Viscosity 45 Weight Pipe Length -- ft. I.D. -- in.

Weight 9.1 Water Loss 10.0 cc. Drill Pipe Length 4,464 ft. I.D. 3 1/2 in.

Chlorides 3,200 P.P.M. Test Tool Length 26 ft. Tool Size 3 1/2 - IF in.

Jars: Make Sterling Serial Number Not Run Anchor Length 38' perf. w/62' drill pipe Size 4 1/2 - FH in.

Did Well Flow? No Reversed Out No Surface Choke Size 1 in. Bottom Choke Size 5/8 in.

Main Hole Size 7 7/8 in. Tool Joint Size 4 1/2 - XH in.

Blow: 1st Open: Weak, 1/8 in., blow increasing to 1/2 in. No blow back during shut-in.

2nd Open: Weak, surface blow increasing to 5 ins. No blow back during shut-in.

Recovered 60 ft. of gas in pipe

Recovered 20 ft. of oil cut mud = .284600 bbls. (Grind out: 8%-oil; 92%-mud)

Recovered 20 ft. of TOTAL FLUID = .284600 bbls.

Recovered ft. of

Recovered ft. of

Remarks Tool Sample Grind Out: 2%-gas; 16%-oil; 82%-mud

Had to trip out to find oil in drill pipe & drain tool.

Time Set Packer(s) 11:56 ~~XXX~~ P.M. Time Started Off Bottom 3:36 ~~XXX~~ A.M. Maximum Temperature 122°

Initial Hydrostatic Pressure (A) 2205 P.S.I.

Initial Flow Period Minutes 10 (B) 6 P.S.I. to (C) 9 P.S.I.

Initial Closed In Period Minutes 30 (D) 904 P.S.I.

Final Flow Period Minutes 60 (E) 9 P.S.I. to (F) 14 P.S.I.

Final Closed In Period Minutes 120 (G) 1071 P.S.I.

Final Hydrostatic Pressure (H) 2205 P.S.I.

Diamond Testing

General Information Report

Page 2 of 2 Pages

General Information

Company Name MULL DRILLING COMPANY, INC.
Contact MARK A. SHREVE
Well Name REIFSCHNEIDER 'A' #1-2
Unique Well ID DST #3 FT SCOTT / CHEROKEE 4,490' - 4,590'
Surface Location SEC 2-18S-28W LANE COUNTY
Well License Number
Field WILDCAT
Well Type

Job Number
Representative ROGER D. FRIEDLY
Well Operator MULL DRILLING COMPANY, INC.
Report Date 2008/10/11
Prepared By ROGER D. FRIEDLY

Test Information

Test Type
Formation DST #3 FT SCOTT / CHEROKEE 4,490' - 4,590'
Well Fluid Type

Start Test Time 20:05:00
Final Test Time 06:10:00

Start Test Date 2008/10/10
Final Test Date 2008/10/11
Flow Duration

Gauge Name KUSTER #1150
Gauge Serial Number
Temperature at Run Depth °C

Test Results

RECOVERED: 60' GAS IN PIPE
20' OCM 8% OIL, 92% MUD

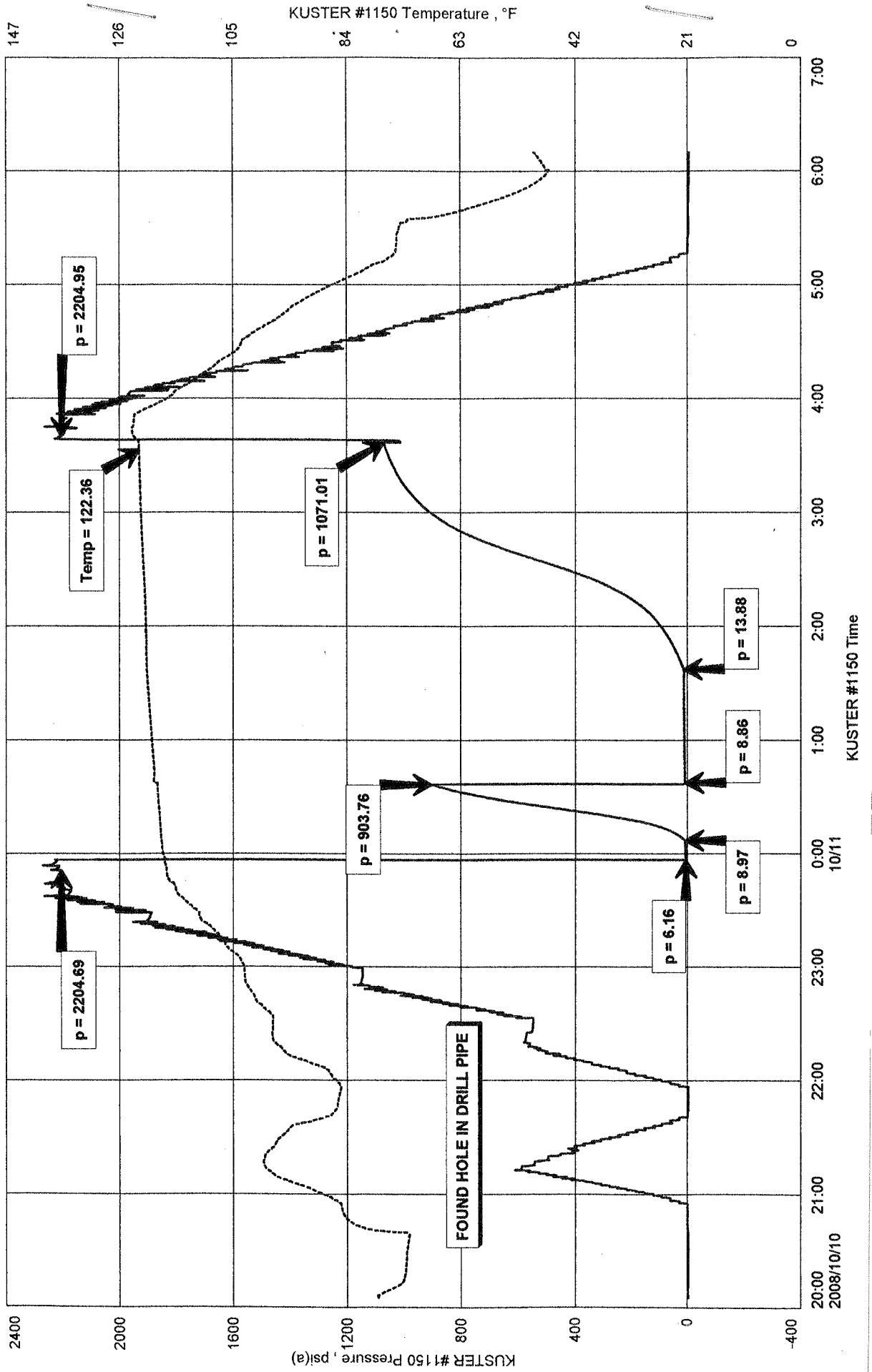
TOOL SAMPLE: 2% GAS, 16% OIL, 82% MUD

MULL DRILLING COMPANY, INC.
DST #3 FT SCOTT / CHEROKEE 4,490' - 4,590'

REIFSCHNEIDER 'A' #1-2
Formation: DST #3 FT SCOTT / CHEROKEE 4,490' - 4,590'

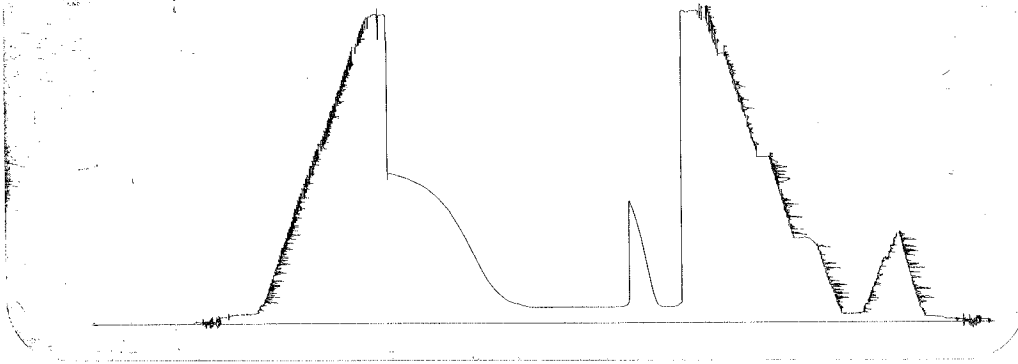
Start Test Date: 2008/10/10
Final Test Date: 2008/10/11

REIFSCHNEIDER 'A' #1-2



DST #3 BWS 3818
 FT Scott/Chavo

4490-4590
 LDC 4587



This is an actual photograph of recorder chart.

POINT	PRESSURE		PSI
	Field Reading	Elec. Office Reading	
(A) Initial Hydrostatic Mud	2205	2205	PSI
(B) First Initial Flow Pressure	6	6	PSI
(C) First Final Flow Pressure	9	9	PSI
(D) Initial Closed-in Pressure	904	904	PSI
(E) Second Initial Flow Pressure	9	9	PSI
(F) Second Final Flow Pressure	14	14	PSI
(G) Final Closed-in Pressure	1071	1071	PSI
(H) Final Hydrostatic Mud	2205	2205	PSI