

15-101-22026

6-18s-28w

### DIAMOND TESTING

P.O. Box 157  
HOISINGTON, KANSAS 67544  
(620) 653-7550 • (800) 542-7313  
STC 21108.D475

Company O'Brien Energy Company Lease & Well No. Redburn No. 6-1  
 Elevation 2747KB Formation Johnson Effective Pay -- Ft. Ticket No. J2079  
 Date 6-19-07 Sec. 6 Twp. 18S Range 28W County Lane State Kansas  
 Test Approved By Kim B. Shoemaker Diamond Representative John C. Riedl

Formation Test No. 1 Interval Tested from 4,443 ft. to 4,539 ft. Total Depth 4,539 ft.

Packer Depth 4,438 ft. Size 6 3/4 in. Packer Depth -- ft. Size -- in.

Packer Depth 4,443 ft. Size 6 3/4 in. Packer Depth -- ft. Size -- in.

Depth of Selective Zone Set          ft.

Top Recorder Depth (Inside) 4,446 ft. Recorder Number 21108 Cap. 5,000 psi

Bottom Recorder Depth (Outside) 4,536 ft. Recorder Number 11073 Cap. 4,000 psi

Below Straddle Recorder Depth          ft. Recorder Number          Cap.          psi

Drilling Contractor WW Drilling - Rig 2 Drill Collar Length 120 ft. I.D. 2 1/4 in.

Mud Type Chemical Viscosity 45 Weight Pipe Length -- ft. I.D. -- in.

Weight 9.0 Water Loss 9.6 cc. Drill Pipe Length 4,297 ft. I.D. 3 1/2 in.

Chlorides 2,700 P.P.M. Test Tool Length 26 ft. Tool Size 3 1/2 - IF in.

Jars: Make Bowen Serial Number No. 2 Anchor Length 96 ft. Size 4 1/2 - FH in.

Did Well Flow? No Reversed Out No Surface Choke Size 1 in. Bottom Choke Size 5/8 in.

Main Hole Size 7 7/8 in. Tool Joint Size 4 1/2 - XH in.

Blow: 1st Open: Weak, 1/2 in., blow. Dead in 17 mins.

2nd Open: Weak, surface blow. Dead in 3 mins.

Recovered 5 ft. of drilling mud = .024600 bbls.

Recovered          ft. of

Recovered          ft. of

Recovered          ft. of

Recovered          ft. of

Remarks Due to severe thunderstorm, times were extended on final flow & shut-in.

Time Set Packer(s) 4:13 ~~AM~~ P.M. Time Started Off Bottom 6:58 ~~AM~~ P.M. Maximum Temperature 121°

Initial Hydrostatic Pressure          (A) 2228 P.S.I.

Initial Flow Period 30 Minutes (B) 38 P.S.I. to (C) 42 P.S.I.

Initial Closed In Period 30 Minutes (D) 108 P.S.I.

Final Flow Period 45 Minutes (E) 40 P.S.I. to (F) 44 P.S.I.

Final Closed In Period 60 Minutes (G) 99 P.S.I.

Final Hydrostatic Pressure          (H) 2198 P.S.I.

## GENERAL INFORMATION

### Client Information:

Company: O'BRIEN ENERGY CO.

Contact: ALAN BRITAIN

Phone: Fax: e-mail:

### Site Information:

Contact: KIM SHOEMAKER

Phone: Fax: e-mail:

### Well Information:

Name: REDBURN 6-1

Operator: O'BRIEN ENERGY CO.

Location-Downhole: DST #1 4443 TO 4539

Location-Surface: S6/18S/28W LANE COUNTY

### Test Information:

Company: DIAMOND TESTING

Representative: JOHN RIEDL

Supervisor: KIM SHOEMAKER

Test Type: CONVENTIONAL Job Number: D475

Test Unit: 2

Start Date: 2007/06/19 Start Time: 14:18:00

End Date: 2007/06/19 End Time: 21:10:00

Report Date: 2007/06/19 Prepared By: JOHN RIEDL

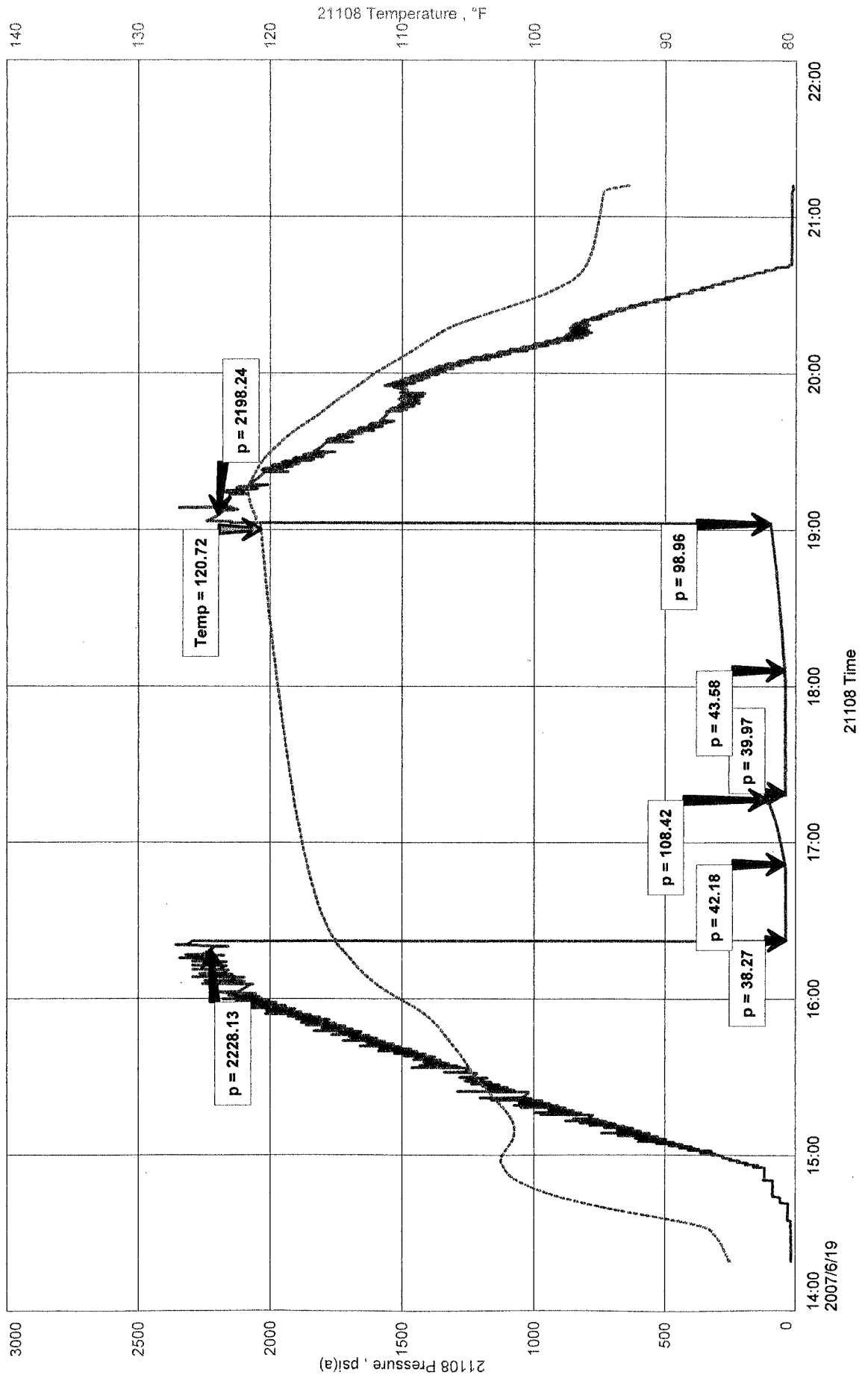
Remarks: Qualified By: KIM SHOEMAKER

RECOVERY: 5' DRILLING MUD

O'BRIEN ENERGY CO.  
DST #1 4443 TO 4539  
Start Test Date: 2007/06/19  
Final Test Date: 2007/06/19

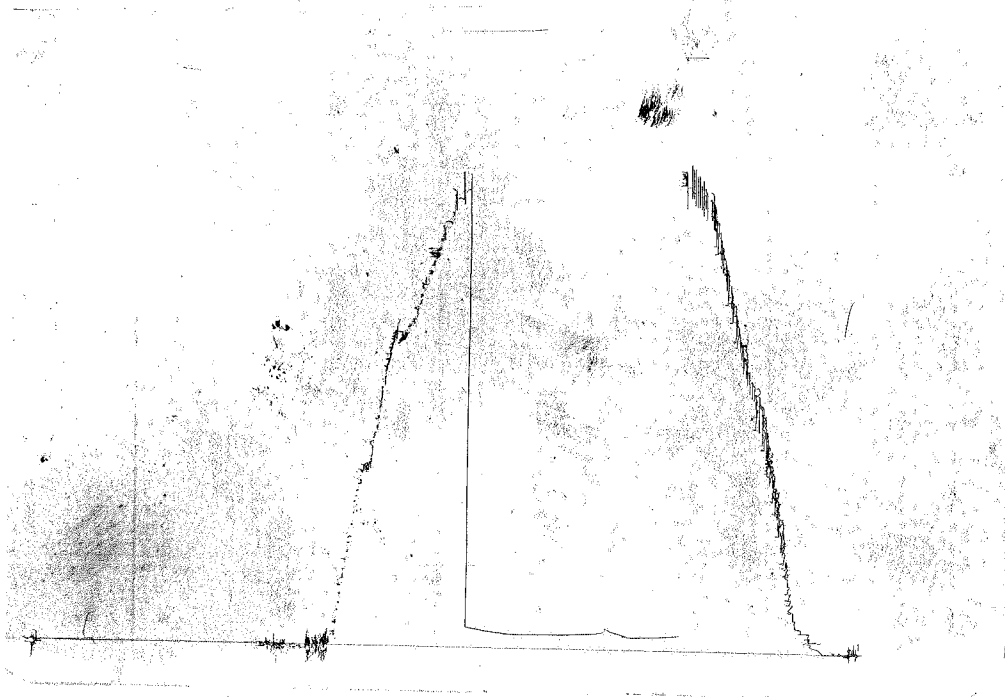
REDBURN 6-1  
REDBURN 6-1  
Formation: JOHNSON  
Job Number: D475

# REDBURN 6-1



O BROWN FRONT DST #1  
RODBORN #6-1

ROC #1023  
008100



This is an actual photograph of recorder chart.

POINT	PRESSURE		PSI
	Field Reading	Elec. Office Reading	
(A) Initial Hydrostatic Mud .....	2228	2228	PSI
(B) First Initial Flow Pressure .....	38	38	PSI
(C) First Final Flow Pressure .....	42	42	PSI
(D) Initial Closed-in Pressure .....	108	108	PSI
(E) Second Initial Flow Pressure .....	40	40	PSI
(F) Second Final Flow Pressure .....	44	44	PSI
(G) Final Closed-in Pressure .....	99	99	PSI
(H) Final Hydrostatic Mud .....	2198	2198	PSI