



WESTERN TESTING CO., INC.
FORMATION TESTING

OK

TICKET No 9987

P. O. BOX 1599 WICHITA, KANSAS 67201
PHONE (316) 262-5861

Elevation 7 Formation Lansing LAM Eff. Pay Ft.

COMPANY NAME R. O. O. R & B Petroleum Inc
ADDRESS Box 1285, Great Bend, KS 67530
LEASE AND WELL NO. Esther Fannestil #5 COUNTY Rice STATE KS Sec. 32 Twp. 18 Rge. 6W
Mail Invoice To Same #5 ESTHER FANNESTIL No. Copies Requested 5
Mail Charts To Co. Name Address No. Copies Requested 5

Formation Test No. 1 Interval Tested From 3040 ft. to 3100 ft. Total Depth 3100 ft.
Packer Depth 3035 ft. Size 6 7/8 in. Packer Depth X ft. Size X in.
Packer Depth 3040 ft. Size 6 7/8 in. Packer Depth X ft. Size X in.
Depth of Selective Zone Set
Top Recorder Depth (Inside) 3035 ft. Recorder Number 10980 Cap. 4200
Bottom Recorder Depth (Outside) 3059 ft. Recorder Number 13547 Cap. 4200
Below Straddle Recorder Depth ft. Recorder Number Cap.
Drilling Contractor Allen Dole Rig #2 Drill Collar Length 150 I. D. 2.25 in.
Mud Type Starch Viscosity 848 Weight Pipe Length I. D. in.
Weight 9.8 Water Loss 10.4 cc. Drill Pipe Length 2869 I. D. 3.8 in.
Chlorides 74,000 P.P.M. Test Tool Length 21 ft. Tool Size 4 3/4 in.
Jars: Make Serial Number Anchor Length 60 ft. Size 5/2 in.
Did Well Flow? Reversed Out Surface Choke Size 3/4 in. Bottom Choke Size 3/4 in.
Main Hole Size 7 7/8 in. Tool Joint Size 4 1/2 x 4 in.

Blow: JSP - Very W. salt; decreasing 1/8 blow, died in 15 min -
FFP 100 B. low

Recovered 15 ft. of V50CM - 3% oil - 97% mud
Recovered ft. of
Recovered ft. of
Recovered ft. of
Chlorides P.P.M. Sample Jars used 2 Remarks:

Time On Location 5:50 A.M. Time Pick Up Tool 7:40 P.M. Time Off Location 1:25 P.M.
Time Set Packer(s) 8:50 P.M. Time Started Off Bottom 11:20 P.M. Maximum Temperature 104+
Initial Hydrostatic Pressure (A) 1721 P.S.I.
Initial Flow Period Minutes 30 (B) 64 P.S.I. to (C) 64 P.S.I.
Initial Closed In Period Minutes 45 (D) 214 P.S.I.
Final Flow Period Minutes 30 (E) 64 P.S.I. to (F) 64 P.S.I.
Final Closed In Period Minutes 45 (G) 18 1/2 P.S.I.
Final Hydrostatic Pressure (H) 1689 P.S.I.

COMPANY TERMS

Western Testing Co., Inc. shall not be liable for damages of any kind to the property or personnel of the party for whom a test is made or for any loss suffered or sustained directly or indirectly through the use of its equipment, of its statements or opinion concerning the results of any test. Tools lost or damaged in the hole shall be paid at cost by the party for whom the test is made.

All charges subject to 12% interest after 60 days from date of invoice. Any expense incurred for collection will be added to the original amount.

Test Approved By Lisa Simpson
Signature of Customer or his authorized representative

Western Representative Gene Eberhart

FIELD INVOICE

Open Hole Test \$ 550
Misrun \$
Straddle Test \$
Jars \$
Selective Zone \$
Safety Joint \$
Standby \$
Evaluation \$
Extra Packer \$
Circ. Sub. \$
Mileage \$
Fluid Sampler \$
Extra Charts \$
Insurance \$
Telecopier \$
TOTAL \$

0500

WESTERN TESTING CO., INC.

Pressure Data

Date 7-27

Test Ticket No. 9987

Recorder No. 10980

Capacity \_\_\_\_\_ Location \_\_\_\_\_ Ft

Clock No. \_\_\_\_\_ Elevation \_\_\_\_\_ Well Temperature \_\_\_\_\_ °F

Point	Pressure	Open Tool	Time Given	Time Computed
A Initial Hydrostatic Mud	<u>1715</u> P.S.I.			
B First Initial Flow Pressure	<u>54</u> P.S.I.	First Flow Pressure	<u>30</u> Mins.	<u>30</u> Mins.
C First Final Flow Pressure	<u>54</u> P.S.I.	Initial Closed-in Pressure	<u>45</u> Mins.	<u>45</u> Mins.
D Initial Closed-in Pressure	<u>215</u> P.S.I.	Second Flow Pressure	<u>30</u> Mins.	<u>30</u> Mins.
E Second Initial Flow Pressure	<u>63</u> P.S.I.	Final Closed-in Pressure	<u>45</u> Mins.	<u>48</u> Mins.
F Second Final Flow Pressure	<u>75</u> P.S.I.			
G Final Closed-in Pressure	<u>172</u> P.S.I.			
H Final Hydrostatic Mud	<u>1640</u> P.S.I.			

PRESSURE BREAKDOWN

First Flow Pressure  
Breakdown: 7 Inc.  
of 5 mins. and a  
final inc. of 0 Min.

Initial Shut-In  
Breakdown: 16 Inc.  
of 3 mins. and a  
final inc. of 0 Min.

Second Flow Pressure  
Breakdown: 7 Inc.  
of 5 mins. and a  
final inc. of 0 Min.

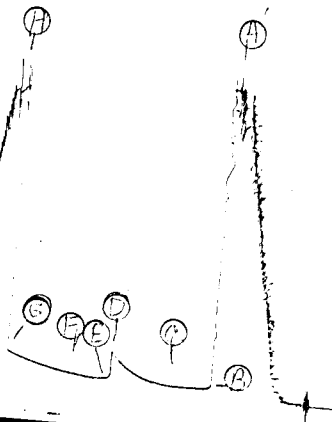
Final Shut-In  
Breakdown: 17 Inc.  
of 3 mins. and a  
final inc. of 0 Min.

Point Mins.	Press.	Point Minutes	Press.	Point Minutes	Press.	Point Minutes	Press.
P 1 0	<u>54</u>	0	<u>54</u>	0	<u>63</u>	0	<u>75</u>
P 2 5		3	<u>54</u>	5	<u>63</u>	3	<u>78</u>
P 3 10		6	<u>56</u>	10	<u>63</u>	6	<u>88</u> <del>82</del>
P 4 15		9	<u>60</u>	15	<u>64</u>	9	<u>86</u>
P 5 20		12	<u>64</u>	20	<u>67</u>	12	<u>90</u>
P 6 25		15	<u>68</u>	25	<u>71</u>	15	<u>96</u>
P 7 30	<u>54</u>	18	<u>72</u>	30	<u>75</u>	18	<u>102</u>
P 8 35		21	<u>79</u>	35		21	<u>108</u>
P 9 40		24	<u>86</u>	40		24	<u>114</u>
P 10 45		27	<u>98</u>	45		27	<u>120</u>
P 11 50		30	<u>113</u>	50		30	<u>126</u>
P 12 55		33	<u>126</u>	55		33	<u>132</u>
P 13 60		36	<u>142</u>	60		36	<u>138</u>
P 14 65		39	<u>161</u>	65		39	<u>146</u>
P 15 70		42	<u>188</u>	70		42	<u>155</u>
P 16 75		45	<u>215</u>	75		45	<u>163</u>
P 17 80		48		80		48	<u>172</u>
P 18 85		51		85		51	
P 19 90		54		90		54	
P 20 95		57		95		57	
100		60		100		60	

10980

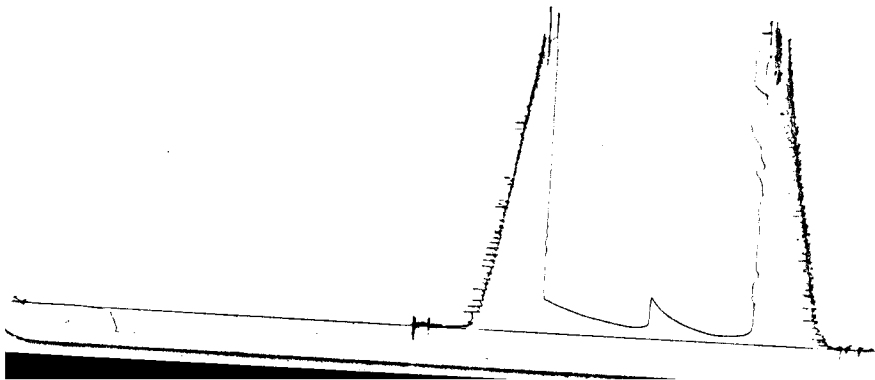
TKT # 9987

I



13.547.

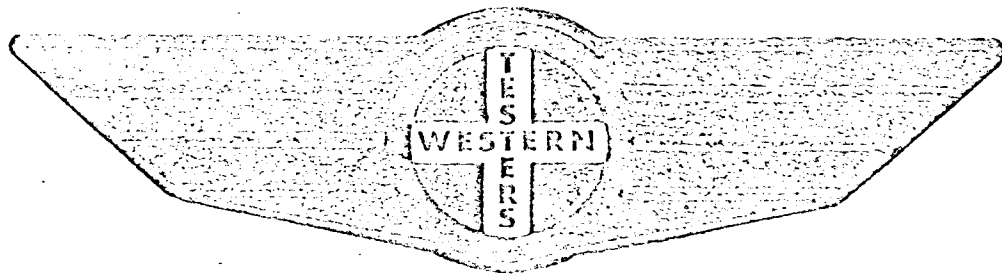
JKT # 9987  
0



FORMATION

TEST

REPORT



Home Office:

Wichita, Kansas 67201

P.O. Box 1599

Phone (316) 262-5861

WESTERN TESTING CO. INC.  
SUBSURFACE PRESSURE SURVEY

DATE: 7-27-85 TICKET #9987  
 CUSTOMER: R & B PETROLEUM INC. LEASE: ESTHER FANNESTIL  
 WELL: 5 TEST: 1 GEOLOGIST: L. LINGREEN  
 ELEVATION (KB): 0 FORMATION: LANSING L & M  
 SECTION: 32 TOWNSHIP: 18S  
 RANGE: 6W COUNTY: RICE STATE: KANSAS  
 GAUGE SN #10980 RANGE: 4200 CLOCK: 12

INTERVAL TEST FROM: 3040 FT TO: 3100 FT TOTAL DEPTH: 3100 FT  
 DEPTH OF SELECTIVE ZONE: FT  
 PACKER DEPTH: 3035 FT SIZE: 6 5/8 IN PACKER DEPTH: 3040 FT SIZE: 6 5/8 IN  
 PACKER DEPTH: FT SIZE: IN PACKER DEPTH: FT SIZE: IN

DRILLING CONTRACTOR: ALLEN DRLG. RIG #2  
 MUD TYPE: STARCH VISCOSITY: 48  
 WEIGHT: 9.8 WATER LOSS (CC): 10.4  
 CHLORIDES (P.P.M.): 74000  
 JARS - MAKE: SERIAL NUMBER:  
 DID WELL FLOW? REVERSED OUT?  
 DRILL COLLAR LENGTH: 150 FT I.D.: 2.25 IN  
 WEIGHT PIPE LENGTH: FT I.D.: IN  
 DRILL PIPE LENGTH: 2869 FT I.D.: 3.8 IN  
 TEST TOOL LENGTH: 21 FT TOOL SIZE: 4 3/4 IN  
 ANCHOR LENGTH: 60 FT SIZE: 5 1/2 IN  
 SURFACE CHOKE SIZE: 3/4 IN BOTTOM CHOKE SIZE: 3/4 IN  
 MAIN HOLE SIZE: 7 7/8 IN TOOL JOINT SIZE: 4 1/2 XH IN

BLOW: INITIAL FLOW PERIOD VERY WEAK DEACREASING  
 1/8 INCH BLOW; DIED IN 15 MINUTES.  
 FINAL FLOW PERIOD NO BLOW.

RECOVERED: 15 FT OF: VERY SLIGHTLY OIL CUT MUD  
 RECOVERED: FT OF: (3% OIL; 97% MUD).  
 RECOVERED: FT OF:  
 RECOVERED: FT OF:  
 RECOVERED: FT OF:  
 RECOVERED: FT OF:  
 RECOVERED: FT OF:  
 RECOVERED: FT OF:  
 RECOVERED: FT OF:  
 RECOVERED: FT OF:

REMARKS:

TIME SET PACKER(S): 8:50 AM TIME STARTED OFF BOTTOM: 11:20 AM  
 WELL TEMPERATURE: 104 °F  
 INITIAL HYDROSTATIC PRESSURE: (A) 1715 PSI  
 INITIAL FLOW PERIOD MIN: 30 (B) 54 PSI TO (C) 54 PSI  
 INITIAL CLOSED IN PERIOD MIN: 45 (D) 215 PSI  
 FINAL FLOW PERIOD MIN: 30 (E) 63 PSI TO (F) 75 PSI  
 FINAL CLOSED IN PERIOD MIN: 48 (G) 172 PSI  
 FINAL HYDROSTATIC PRESSURE (H) 1640 PSI

