



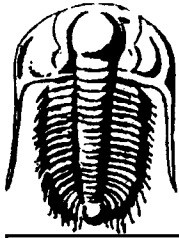
DRILL STEM TEST REPORT

Prepared for

Coronado Oil & Gas
PO Box 1285
Great Bend, KS 67530

Janssen "A" #7
2-18S-7W
Rice Co. Kansas

Trilobite Testing, Inc
PO Box 362 - Hays, Kansas - 67601
ph: 785-625-4778 fax: 785-625-5620
e-mail: trilobite@eaglecom.net



TRILOBITE TESTING, INC.

DRILL STEM TEST REPORT
 Coronado Oil & Gas
 PO Box 1285, Great Bend, KS 67530

Well name#:	Janssen "A" #7	Date:	10/4/2002
Location#:	2-18S-7W Rice Co. Kansas	Ticket #:	16361
		DST#	#1

General Informaion:

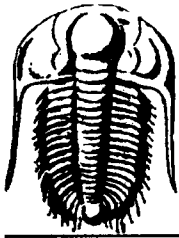
Formation:	Lans. KC	Test Type:	Conventional	BHT:	97
Interval:	3085-3105	Tester:	Gary Pevoteaux	OIL API:	
Total Depth:	3105	Elevation:	1703 ft(KB)	H2O Salinity:	
Hole Diameter:	7 7/8"		1694 ft(CF)		
Start Data:	10/4/2002	Tool Weight:	2100	Mud Type:	
Start Time:	20:00:00	Weight Set on Packers:	20000	Mud Weight:	9.2
Time tool opened:	23:15:00	Weight to Pull Loose:	46000	Viscosity:	47
Time Off Btm:	2:42:00	Initial String Weight:	42000	Water Loss:	8.8
End Date:	10/5/02	Final String Weight:	42000	Resistivity:	
End Time:	4:05:00	Drill Pipe Length:	3068	Salinity:	
		Drill Collar Length:			

Test Comment:	IF: Weak blow 1-1 1/4" ISI: No Blow FF: Very weak blow (surface). Dead in 15 minutes. FSI: No Blow
----------------------	---

Recovery	
Length(ft):	20 SOCM 1-2%O 98%M GIP Trace

Gas Volume Report

Recorder #:	13222	O Min:	Ins. Of water PSIG	Orifice size	MCF/D
Pressure Summary:	Time:(min)				
Initial Hydro-static:	1526				
Open to Flow (1):	30 30				
Shut-in (1):	20 45				
End Shut-in (1):	856				
Open to Flow (2):	19 70				
Shut-in (2):	19 60				
End Shut-in (2):	455				
Final Hydro-static:	1508				



TRILOBITE TESTING, INC.

DRILL STEM TEST REPORT
 Coronado Oil & Gas
 PO Box 1285, Great Bend, KS 67530

Well name#:	Janssen "A" #7	Date:	10/5/2002
Location#:	2-18S-7W Rice Co. Kansas	Ticket #:	16362
		DST#	#2

General Informaion:

Formation:	Conglomerat	Test Type:	Conventional	BHT:	105
Interval:	3201-3240	Tester:	Gary Pevoteaux	OIL API:	
Total Depth:	3240	Elevation:	1703 ft(KB)	H2O Salinity:	
Hole Diameter:	7 7/8"		1694 ft(CF)		
Start Date:	10/5/2002	Tool Weight:	2100	Mud Type:	
Start Time:	19:05:00	Weight Set on Packers:	20000	Mud Weight:	9.1
Time tool opened:	20:35:00	Weight to Pull Loose:	50000	Viscosity:	53
Time Off Btm:	23:22:00	Initial String Weight:	44000	Water Loss:	10.2
End Date:	10/6/02	Final String Weight:	45000	Resistivity:	
End Time:	1:45:00	Drill Pipe Length:	3194	Salinity:	
		Drill Collar Length:			

Test Comment:

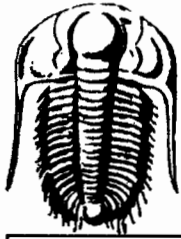
IF: Strong blow. BOB in 50 seconds.
 ISI: Weak blow 1/2 - 1."
 FF: Strong blow. BOB in 2.5 minutes.
 FSI: Weak blow 1-4."

Recovery

Length(ft):	40 OCM	8%G 22%O 70%M
	125 GMCO	28%G 42%O 30%M
	125 GOCM	12%G 18%O 70%W
	125 SOCM	3% O 97%W

Gas Volume Report

Recorder #:	Pressure Summary:	13222 Time:(min)	O Min:	Ins. Of water PSIG	Orifice size	MCF/D
	Initial Hydro-static:	1476				
	Open to Flow (1):	71 30				
	Shut-in (1):	85 45				
	End Shut-in (1):	676				
	Open to Flow (2):	115 45				
	Shut-in (2):	182 45				
	End Shut-in (2):	646				
	Final Hydro-static:	1466				



TRILOBITE TESTING, INC.

DRILL STEM TEST REPORT
 Coronado Oil & Gas
 PO Box 1285, Great Bend, KS 67530

Well name#:	Janssen "A" #7	Date:	10/6/2002
Location#:	2-18S-7W Rice Co. Kansas	Ticket #:	16363
		DST#	#3

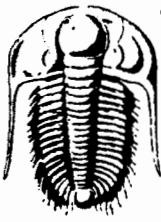
General Informaion:

Formation:	Misner	Test Type:	Conventional	BHT:	105
Interval:	3286-3298	Tester:	Gary Pevoteaux	OIL API:	
Total Depth:	3298	Elevation:	1703 ft(KB)	H2O Salinity:	
Hole Diameter:	7 7/8"		1694 ft(CF)		
Start Data:	10/6/2002	Tool Weight:	2100	Mud Type:	
Start Time:	12:00:00	Weight Set on Packers:	20000	Mud Weight:	9.1
Time tool opened:	15:55:00	Weight to Pull Loose:	55000	Viscosity:	55
Time Off Btm:	19:13:00	Initial String Weight:	44000	Water Loss:	14.6
End Date:	10/6/02	Final String Weight:	44000	Resistivity:	
End Time:	22:05:00	Drill Pipe Length:	3288	Salinity:	
		Drill Collar Length:			

Test Comment:	IF: Weak to fair blow. 1/2 -6" ISI: No blow FF: Weak to fair blow. 1-8" FSI: No blow
Recovery Length(ft):	4-6ft Clean oil at top of recovery 210 MW 85%W 15%M

Gas Volume Report

Recorder #:	13222	Min:	Ins. Of water PSIG	Orifice size	MCF/D
Pressure Summary:	Time:(min)				
Initial Hydro-static:	1556				
Open to Flow (1):	11 30				
Shut-in (1):	14 45				
End Shut-in (1):	1009				
Open to Flow (2):	31 60				
Shut-in (2):	48 60				
End Shut-in (2):	996				
Final Hydro-static:	1506				



TRILOBITE TESTING INC.

P.O. Box 362 • Hays, Kansas 67601

INVOICE #5181 \$2370.00

No 16361

Test Ticket

Well Name & No. Janssen "A" #7 Test No. 1 Date 10-4-2002
 Company Coronado Oil & Gas Zone Tested Lans KC
 Address P.O. Box 1283, Great Bend, Ks. 67530 Elevation 1703 KB 4694 GL
 Co. Rep / Geo. Jim Musgrove Cont. Dulse Daley #8 Est. Ft. of Pay Por. %
 Location: Sec. 2 Twp. 18S Rge. 7W Co. Rice State Ks.
 No. of Copies 5 Distribution Sheet (Y, N) N Turnkey (Y, N) Evaluation (Y, N)

Interval Tested 3085 - 3105' Initial Str Wt./Lbs. 42,000 Unseated Str Wt./Lbs. 42,000
 Anchor Length 20' Wt. Set Lbs. 20,000 Wt. Pulled Loose/Lbs. 46,000
 Top Packer Depth 3080' Tool Weight 2100 #
 Bottom Packer Depth 3085' Hole Size — 7 7/8" Rubber Size — 6 3/4"
 Total Depth Wt. Pipe Run None Drill Collar Run None
 Mud Wt. 9.2 LCM 0 Vis. 42 WL 8.8 cc. Drill Pipe Size 4 1/2" x .4 Ft. Run 3068'
 Blow Description IF: Weak blow. 1 - 1 1/4" -
ISI: No blow.
FF: Very weak blow. (surface) Dead in 15 mins. FSI: No blow.

Recovery — Total Feet 20 GIP Trace Ft. in DC Ft. in DP
 Rec. 20 Feet Of SOCM %gas 1-2 %oil %water 98 %mud
 Rec. Feet Of %gas %oil %water %mud
 Rec. Feet Of %gas %oil %water %mud
 Rec. Feet Of %gas %oil %water %mud
 Rec. Feet Of %gas %oil %water %mud
 BHT 97 °F Gravity N/A °API D@ °F Corrected Gravity N/A °API
 RW N.C. @ °F Chlorides 3,000 ppm Recovery Chlorides 3,000 ppm System

	AK-1	Alpine		
(A) Initial Hydrostatic Mud	1526		PSI Recorder No. <u>10290</u>	T-On Location <u>1900</u>
(B) First Initial Flow Pressure	30		PSI (depth) <u>3077'</u>	T-Started <u>2000</u>
(C) First Final Flow Pressure	20		PSI Recorder No. <u>13222</u>	T-Open <u>2315</u>
(D) Initial Shut-In Pressure	856		PSI (depth) <u>3082'</u>	T-Pulled <u>0242</u>
(E) Second Initial Flow Pressure	19		PSI Recorder No. <u> </u>	T-Out <u>0405</u>
(F) Second Final Flow Pressure	19		PSI (depth) <u> </u>	T-Off Location <u>0500</u>
(G) Final Shut-in Pressure	455		PSI Initial Opening <u>30</u>	Test <input checked="" type="checkbox"/> <u>700.00</u> 700
(Q) Final Hydrostatic Mud	1508		PSI Initial Shut-in <u>45</u>	Jars <u> </u>
			Final Flow <u>70</u>	Safety Joint <u> </u>
			Final Shut-in <u>60</u>	Straddle <u> </u>
			<u>4</u>	Circ. Sub <u> </u>
				Sampler <u> </u>
				Extra Packer <u> </u>
				Elec. Rec. <u> </u>
				Mileage <input checked="" type="checkbox"/> <u>90.00</u> 90
				Other <u>Stand</u> <u>30.00</u> 790
				TOTAL PRICE \$ <u>820.00</u> 820

TRILOBITE TESTING INC. SHALL NOT BE LIABLE FOR DAMAGE OF ANY KIND OF THE PROPERTY OR PERSONNEL OF THE ONE FOR WHOM A TEST IS MADE. OR FOR ANY LOSS SUFFERED OR SUSTAINED, DIRECTLY OR INDIRECTLY, THROUGH THE USE OF ITS EQUIPMENT, OR ITS STATEMENTS OR OPINION CONCERNING THE RESULTS OF ANY TEST. TOOLS LOST OR DAMAGED IN THE HOLE SHALL BE PAID FOR AT COST BY THE PARTY FOR WHOM THE TEST IS MADE.

Approved By
 Our Representative Cary P. Watson

Mileage 90.00 90
 Other Stand 30.00 790
 TOTAL PRICE \$ 820.00 820

Well Name Janssen "A" #7

DST Number #1

Recorder Number 13222

A: 1.518 1524.10

B: 0.038 38.46

C: 0.040 40.49

D: 0.845 851.015

E: 0.052 52.63

F: 0.054 54.66

G: 1.397 1403.015

Q: 1.503 1509.045

CHART PAGE

This is a photocopy of the actual AK-1 recorder chart

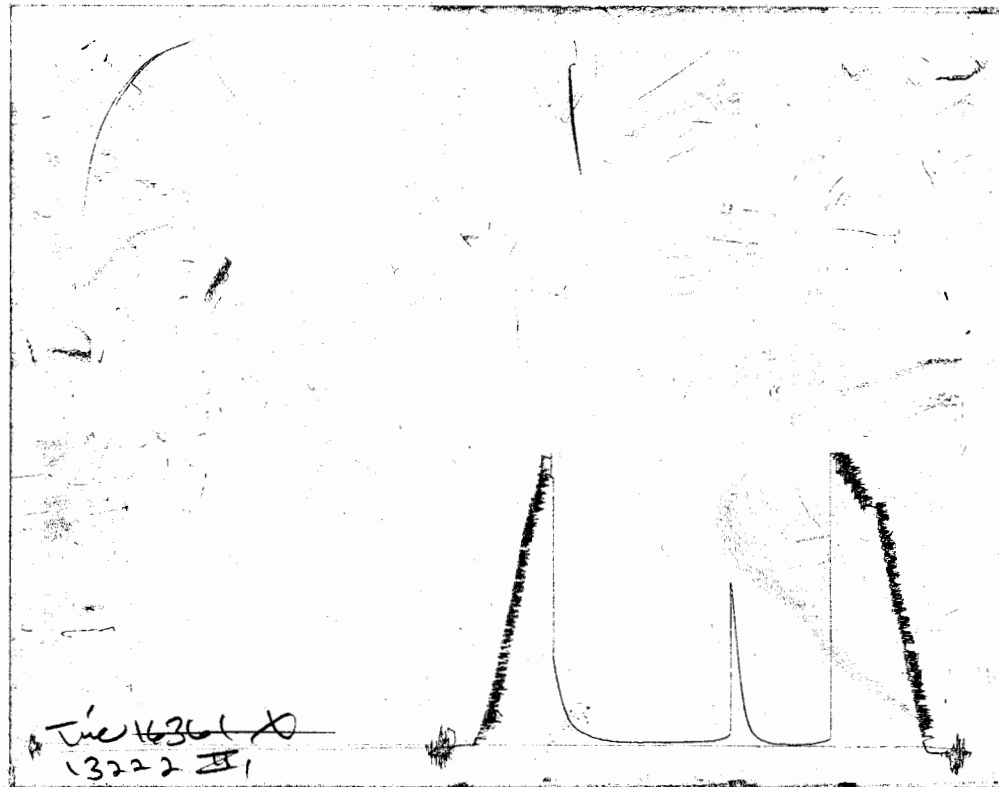
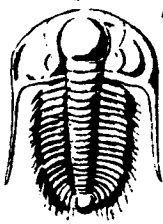


CHART PAGE

This is a photocopy of the actual AK-1 recorder chart





TRILOBITE TESTING INC.

P.O. Box 362 • Hays, Kansas 67601

No 16362

Test Ticket

Well Name & No. Janssen A^{5th} 7 Test No. 2 Date 10-5-2002
 Company Coronado Oil & Gas Zone Tested Conglomerate
 Address P.O. Box 1285, Great Bend Ks. 67530 Elevation 1703 KB 1494 GL
 Co. Rep / Geo. Jim Musgrove Cont. Duke Drlg. #8 Est. Ft. of Pay Por. %
 Location: Sec. 2 Twp. 18^S Rge. 7^W Co. Rice State Ks.
 No. of Copies 5 Distribution Sheet (Y, N) N Turnkey (Y, N) Evaluation (Y, N)

Interval Tested 3201 - 3240' Initial Str Wt./Lbs. 44,000 Unseated Str Wt./Lbs. 45,500
 Anchor Length 39' Wt. Set Lbs. 20,000 Wt. Pulled Loose/Lbs. 50,000
 Top Packer Depth 3196' Tool Weight 2100 II
 Bottom Packer Depth 3201' Hole Size — 7 7/8" ✓ Rubber Size — 6 3/4" ✓
 Total Depth 3240' Wt. Pipe Run None Drill Collar Run None
 Mud Wt. 9.1 LCM 0 Vis. 53 WL 10.2 cc. Drill Pipe Size 4 1/2" x H. Ft. Run 3194
 Blow Description IF: strong blow. B.O.B. in 50 secs. ISI: weak
blow. 1/2 - 1".
FF: strong blow. B.O.B. in 2.5 mins. FSI: weak blow. 1 - 4".

Recovery — Total Feet 415' GIP 490' Ft. in DC 0 Ft. in DP 415
 Rec. 40 Feet Of OCM 8 %gas 22 %oil %water 70 %mud
 Rec. 125 Feet Of GMCO 28 %gas 42 %oil %water 30 %mud
 Rec. 125 Feet Of GOCW 12 %gas 18 %oil 70 %water %mud
 Rec. 125 Feet Of SOEW %gas 3 %oil 97 %water %mud
 Rec. Feet Of %gas %oil %water %mud
 BHT 105 °F Gravity N/A °API @ °F Corrected Gravity N/A °API
 RW .18 @ 61 °F Chlorides 44,000 ppm Recovery Chlorides 4,000 ppm System

	AK-1	Alpine		
(A) Initial Hydrostatic Mud	<u>1476</u>		PSI Recorder No. <u>10290</u>	T-On Location <u>1815</u>
(B) First Initial Flow Pressure	<u>71</u>		PSI (depth) <u>3232'</u>	T-Started <u>1905</u>
(C) First Final Flow Pressure	<u>85</u>		PSI Recorder No. <u>13222</u>	T-Open <u>2035</u>
(D) Initial Shut-In Pressure	<u>676</u>		PSI (depth) <u>3237'</u>	T-Pulled <u>2322</u>
(E) Second Initial Flow Pressure	<u>115</u>		PSI Recorder No. <u> </u>	T-Out <u>0145</u>
(F) Second Final Flow Pressure	<u>182</u>		PSI (depth) <u> </u>	T-Off Location <u>N/A</u>
(G) Final Shut-in Pressure	<u>146</u>		PSI Initial Opening <u>30</u>	Test <u>✓</u> <u>700</u> ⁰⁰⁷⁰⁰
(Q) Final Hydrostatic Mud	<u>1466</u>		PSI Initial Shut-in <u>45</u>	Jars <u> </u>
			Final Flow <u>45</u>	Safety Joint <u> </u>
			Final Shut-in <u>45</u>	Straddle <u> </u>
			<u>4</u>	Circ. Sub <u> </u>
				Sampler <u> </u>
				Extra Packer <u> </u>
				Elec. Rec. <u> </u>

TRILOBITE TESTING INC. SHALL NOT BE LIABLE FOR DAMAGE OF ANY KIND OF THE PROPERTY OR PERSONNEL OF THE ONE FOR WHOM A TEST IS MADE. OR FOR ANY LOSS SUFFERED OR SUSTAINED, DIRECTLY OR INDIRECTLY, THROUGH THE USE OF ITS EQUIPMENT, OR ITS STATEMENTS OR OPINION CONCERNING THE RESULTS OF ANY TEST. TOOLS LOST OR DAMAGED IN THE HOLE SHALL BE PAID FOR AT COST BY THE PARTY FOR WHOM THE TEST IS MADE.

Approved By
 Our Representative Gary Rustcamp

Mileage ✓ 90.00 ⁹⁰
 Other ¹⁷⁹⁰
 TOTAL PRICE \$ ✓ 790 ¹⁷⁹⁰

Well Name _____
DST Number #2
Recorder Number 13222

A: 1.552 1558.23
B: 0.110 111.34
C: 0.073 73.885
D: 0.676 682.00
E: 0.154 155.87
F: 0.157 158.905
G: 0.628 634.00
Q: 1.528 1534.14

CHART PAGE

This is a photocopy of the actual AK-1 recorder chart

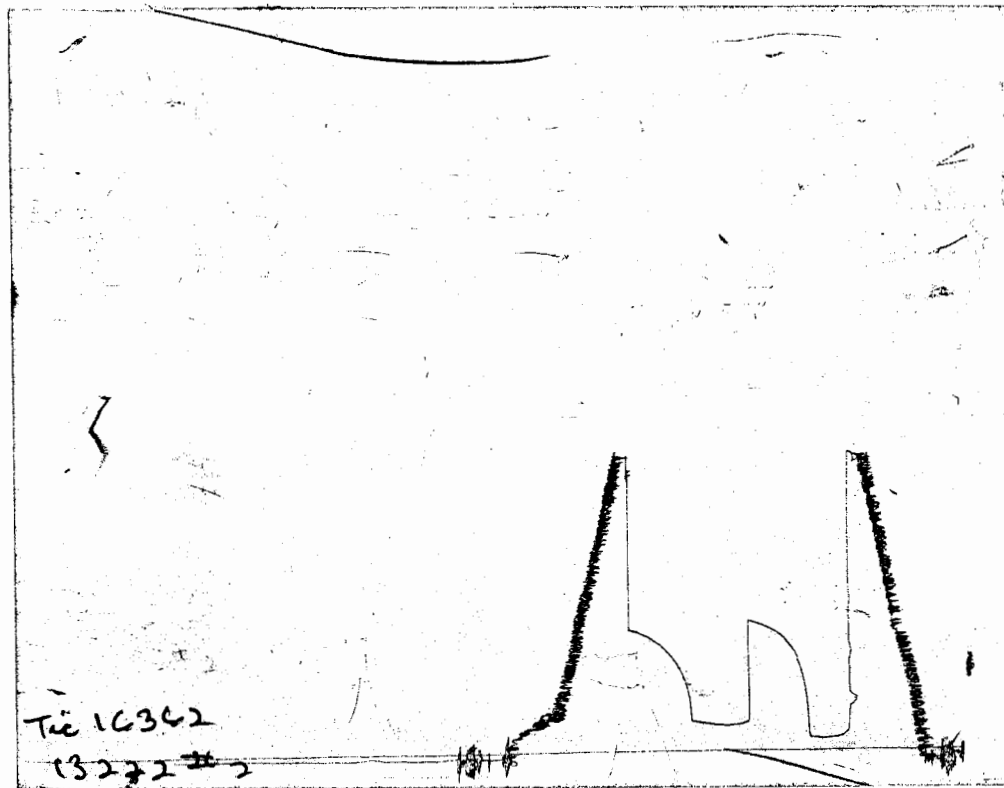
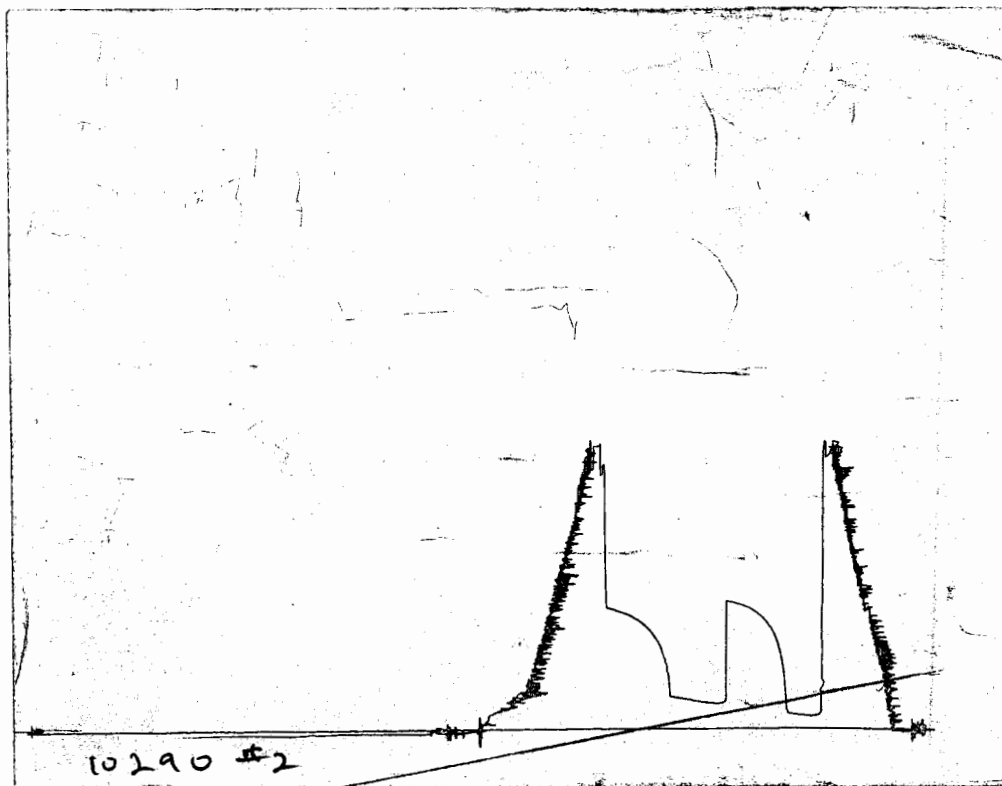
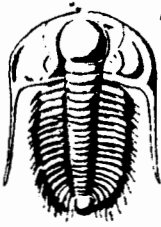


CHART PAGE

This is a photocopy of the actual AK-1 recorder chart





TRILOBITE TESTING INC.

P.O. Box 362 • Hays, Kansas 67601

No 16363

Test Ticket

Well Name & No. Janssen A #7 Test No. 3 Date 10-6-2007
 Company Coronado Oil & Gas Zone Tested Minner
 Address Great Bend Ks. 67530 Elevation 1703 KB 1644 GL
 Co. Rep / Geo. Jim Musgrove Cont. Duke Dalg #2 Est. Ft. of Pay Por. %
 Location: Sec. 2 Twp. 18^S Rge. 7^W Co. Rice State Ks.
 No. of Copies 5 Distribution Sheet (Y, N) N Turnkey (Y, N) Evaluation (Y, N)

Interval Tested 3286 - 3298' Initial Str Wt./Lbs. 44,000 Unseated Str Wt./Lbs. 44,000
 Anchor Length 12' Wt. Set Lbs. 20,000 Wt. Pulled Loose/Lbs. 55,000
 Top Packer Depth 3281' Tool Weight 2100#
 Bottom Packer Depth 3286' Hole Size — 7 7/8" Rubber Size — 6 3/4"
 Total Depth 3298' Wt. Pipe Run None Drill Collar Run None
 Mud Wt. 9.1 LCM 0 Vis. 55 WL 14.6 Drill Pipe Size 4 1/2" x 4 Ft. Run 3288'
 Blow Description IF: weak to fair below, 1/2 - 6". ISI: No below,

FF: Weak to fair below, 1 - 8". FSI: No below.

Recovery — Total Feet 210 GIP Trace Ft. in DC 0 Ft. in DP 210
 Rec. 4-6" ~~Feet~~ Of Clean oil @ top of %gas %oil %water %mud
 Rec. Feet Of recovery %gas %oil 85 %water 15 %mud
 Rec. 210 Feet Of MW %gas %oil %water %mud
 Rec. Feet Of %gas %oil %water %mud
 Rec. Feet Of %gas %oil %water %mud
 BHT 105 °F Gravity N/A °API @ °F Corrected Gravity N/A °API
 RW 46 @ 64 °F Chlorides 11,500 ppm Recovery Chlorides 9,000 ppm System

	AK-1	Alpine		
(A) Initial Hydrostatic Mud	<u>1556</u>		PSI Recorder No. <u>10290</u>	T-On Location <u>N/A</u>
(B) First Initial Flow Pressure	<u>11</u>		PSI (depth) <u>3290'</u>	T-Started <u>1200</u>
(C) First Final Flow Pressure	<u>14</u>		PSI Recorder No. <u>13222</u>	T-Open <u>1555</u>
(D) Initial Shut-In Pressure	<u>1009</u>		PSI (depth) <u>3295'</u>	T-Pulled <u>1913</u>
(E) Second Initial Flow Pressure	<u>31</u>		PSI Recorder No. <u> </u>	T-Out <u>2110</u>
(F) Second Final Flow Pressure	<u>48</u>		PSI (depth) <u> </u>	T-Off Location <u>2205</u>
(G) Final Shut-in Pressure	<u>996</u>		PSI Initial Opening <u>30</u>	Test <input checked="" type="checkbox"/> <u>700⁰⁰ 700</u>
(Q) Final Hydrostatic Mud	<u>1506</u>		PSI Initial Shut-in <u>45</u>	Jars <u> </u>
			Final Flow <u>60</u>	Safety Joint <u> </u>
			Final Shut-in <u>60</u>	Straddle <u> </u>
			<u> </u>	Circ. Sub <u> </u>
			<u> </u>	Sampler <u> </u>
				Extra Packer <u> </u>
				Elec. Rec. <u> </u>

TRILOBITE TESTING INC. SHALL NOT BE LIABLE FOR DAMAGE OF ANY KIND OF THE PROPERTY OR PERSONNEL OF THE ONE FOR WHOM A TEST IS MADE. OR FOR ANY LOSS SUFFERED OR SUSTAINED, DIRECTLY OR INDIRECTLY, THROUGH THE USE OF ITS EQUIPMENT, OR ITS STATEMENTS OR OPINION CONCERNING THE RESULTS OF ANY TEST. TOOLS LOST OR DAMAGED IN THE HOLE SHALL BE PAID FOR AT COST BY THE PARTY FOR WHOM THE TEST IS MADE.

Approved By
 Our Representative Cary Purotamp

Mileage 700
 Other STAND 6000 60
 TOTAL PRICE \$ 7600 260

Well Name _____
DST Number #3
Recorder Number 13222

A: 1.570 1576.30
B: 0.032 32.39
C: 0.004 4.05
D: 0.998 1004.00
E: 0.070 70.85
F: 0.060 60.73
G: 0.988 994.00
Q: 1.486 1492.00

CHART PAGE

This is a photocopy of the actual AK-1 recorder chart

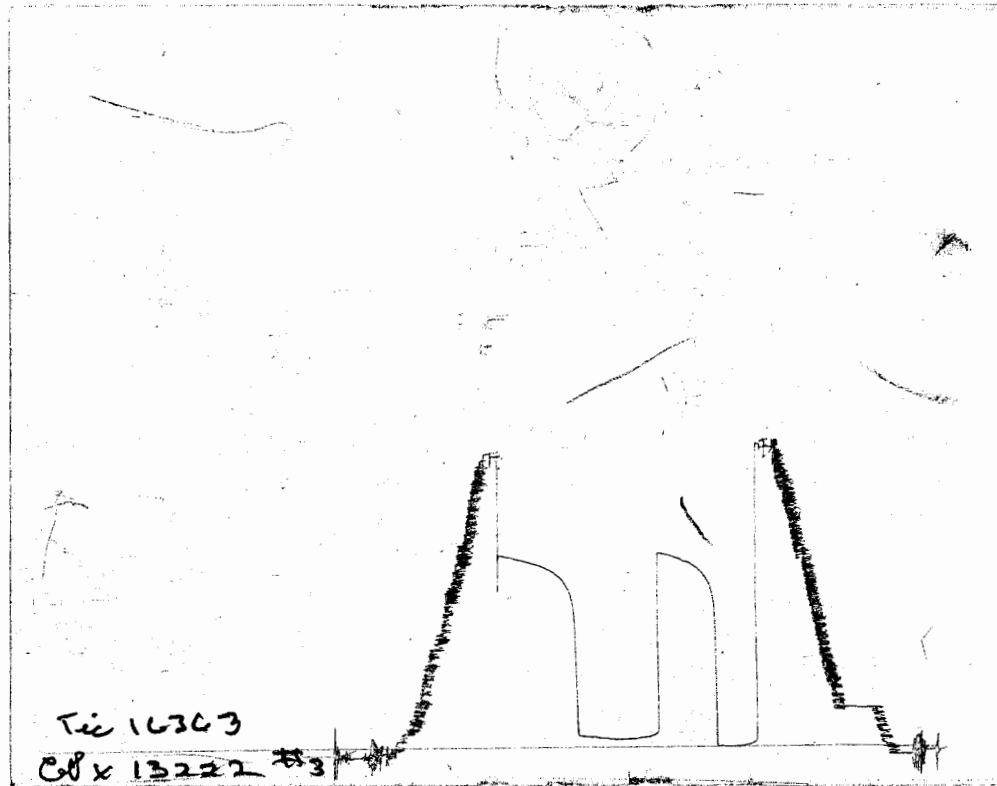


CHART PAGE

This is a photocopy of the actual AK-1 recorder chart

