



**WESTERN TESTING CO., INC.**  
P.O. BOX 1599 — WICHITA, KANSAS 67201

DATE 6-11-80

Petroleum Energy, Inc.  
Suite 710, 120 Building  
Wichita, Kansas 67202

NOTE: PER REQUEST ONE COPY TO J. MUSGROVE, GT. BEND, KS.

WELL REPORT NO. 6242

UNIT NO.

DISTRICT

FOR CUSTOMER'S USE ONLY

REGISTER NO.

VOUCHER NO.

TERMS APPROVED

PRICE APPROVED

CALCULATIONS CHECKED

ADJUSTMENTS

ACCOUNTING DISTRIBUTION

AUDITED

FINAL APPROVAL

YOUR ORDER NO.	OWNER	FARM	CONTRACTOR	SECTION	TWP.	RANGE
	Stabbert		Rice County, Kansas	19	18S	9W

WELL NO.  
#1

One drill stem test 3164' to 3218' (Test #1)

\$550.00

Mileage: 35 miles at .75 a mile

26.26

\$576.25

**POSTED**

DISCOUNT 5.76	1% DISCOUNT ALLOWED ON THIS INVOICE IF PAID BY THE 20 <sup>TH</sup> OF THE FOLLOWING MONTH.	PLEASE INCLUDE OUR INVOICE NUMBER WITH YOUR REMITTANCE.	INVOICE NUMBER 6242
------------------	--	--	------------------------

SEND ALL REMITTANCES TO POST OFFICE BOX 1599, WICHITA, KANSAS 67201



WESTERN TESTING CO., INC.

FORMATION TESTING

TICKET NO 6242

P. O. BOX 1599 PHONE (316) 838-0601 WICHITA, KANSAS 67201

Elevation 1723 K.B. Formation Eff. Pay Ft.

District GREAT BEND Date 6/11/80 Customer Order No.

COMPANY NAME PETROLEUM ENERGY Inc.

ADDRESS SUITE 710 120 BUILDING WICHITA KS 67202

LEASE AND WELL NO. STABBERT #1 COUNTY RICE STATE KS Sec. 19 Twp 18 Rge 9W

Mail Invoice To SAME AS ABOVE No. Copies Requested 8

Co. Name Address Mail Charts To One copy to Jim Musgrave SAME AS ABOVE No. Copies Requested 8

Formation Test No. 1 Interval Tested from 3164 ft. to 3218 ft. Total Depth 3218 ft. Packer Depth 3159 ft. Size 6 3/4 in. Packer Depth 3164 ft. Size 6 3/4 in. Packer Depth ft. Size in. Packer Depth ft. Size in. Depth of Selective Zone Set

Top Recorder Depth (Inside) 3207 ft. Recorder Number 10266 Cap. 4650 Bottom Recorder Depth (Outside) 3210 ft. Recorder Number 4000 Cap. 4000 Below Straddle Recorder Depth ft. Recorder Number Cap.

Drilling Contractor WHITE & ELLIS Reg #2 Mud Type STARCH SALT GEL Viscosity 48 Weight 10.1 Water Loss 16.0 cc. Chlorides 83,000 P.P.M. Test Tool Length 22 ft. Tool Size 4 1/2 in. Jars: Make Serial Number Anchor Length 54 ft. Size 5 1/2 in. Did Well Flow? NO Reversed Out NO Surface Choke Size 3/4 in. Bottom Choke Size 3/4 in. Main Hole Size 7 1/8 in. Tool Joint Size 4 1/2 in.

Blow: 1ST - WEAK BLOW SLOWLY DYEING (DIED IN 20 MIN) 2ND - NO BLOW - FLUSHED TOOL NO HELP

Recovered 10' ft. of MUD VSOSM Recovered ft. of Recovered ft. of Recovered ft. of Recovered ft. of Remarks:

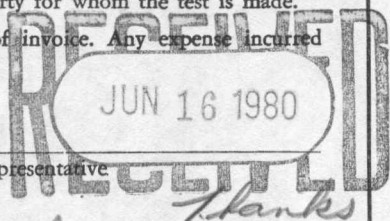
ARRIVAL 12:45 A.M. 6/10/80 APPRX. DEPARTURE 6/11/80 Time Set Packer(s) 3:40 A.M. P.M. Time Started Off Bottom 5:40 A.M. P.M. Maximum Temperature 114° Initial Hydrostatic Pressure (A) 1786 P.S.I. Initial Flow Period (B) 30 Minutes 58 P.S.I. to (C) 58 P.S.I. Initial Closed In Period (D) 30 Minutes 82 P.S.I. Final Flow Period (E) 30 Minutes 58 P.S.I. to (F) 58 P.S.I. Final Closed In Period (G) 30 Minutes 82 P.S.I. Final Hydrostatic Pressure (H) 1669 P.S.I.

COMPANY TERMS

Western Testing Co., Inc. shall not be liable for damages of any kind to the property or personnel of the one for whom a test is made or for any loss suffered or sustained directly or indirectly through the use of its equipment, of its statements or opinion concerning the results of any test. Tools lost or damaged in the hole shall be paid at cost by the party for whom the test is made.

All charges subject to 12% interest after 60 days from date of invoice. Any expense incurred for collection will be added to the original amount.

Test Approved By [Signature] Signature of Customer or his authorized representative Western Representative Danell Claphan



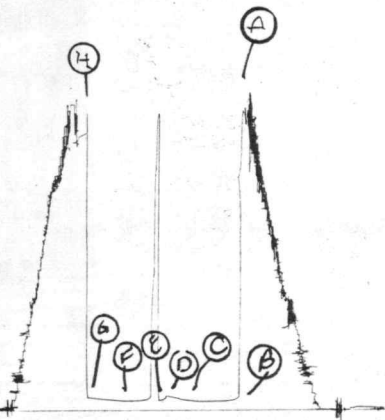
FIELD INVOICE

Open Hole Test \$ 550.00 Misrun \$ Straddle Test \$ Jars \$ Selective Zone \$ Safety Joint \$ Standby \$ Evaluation \$ Extra Packer \$ Circ. Sub. \$ Mileage 35 \$ 26.25 Fluid Sampler \$ Extra Charts \$ TOTAL \$ 576.25

10266

Jet # 6242

I.



# WESTERN TESTING CO., INC.

## Pressure Data

Date 6-11-80 Test Ticket No. 6242  
 Recorder No. 10266 Capacity 4650 Location 3207 Ft.  
 Clock No. \_\_\_\_\_ Elevation 1723 Well Temperature 114 °F

Point	Pressure		Time Given	Time Computed
A Initial Hydrostatic Mud	<u>1781</u> P.S.I.	Open Tool	<u>3:40 A</u> M	
B First Initial Flow Pressure	<u>63</u> P.S.I.	First Flow Pressure	<u>30</u> Mins.	<u>30</u> Mins.
C First Final Flow Pressure	<u>53</u> P.S.I.	Initial Closed-in Pressure	<u>30</u> Mins.	<u>21</u> Mins.
D Initial Closed-in Pressure	<u>89</u> P.S.I.	Second Flow Pressure	<u>30</u> Mins.	<u>30</u> Mins.
E Second Initial Flow Pressure	<u>61</u> P.S.I.	Final Closed-in Pressure	<u>30</u> Mins.	<u>27</u> Mins.
F Second Final Flow Pressure	<u>56</u> P.S.I.			
G Final Closed-in Pressure	<u>78</u> P.S.I.			
H Final Hydrostatic Mud	<u>1648</u> P.S.I.			

### PRESSURE BREAKDOWN

First Flow Pressure		Initial Shut-In		Second Flow Pressure		Final Shut-In	
Breakdown: <u>6</u> Inc.		Breakdown: <u>7</u> Inc.		Breakdown: <u>6</u> Inc.		Breakdown: <u>9</u> Inc.	
of <u>5</u> mins. and a		of <u>3</u> mins. and a		of <u>5</u> mins. and a		of <u>3</u> mins. and a	
final inc. of <u>0</u> Min.		final inc. of <u>0</u> Min.		final inc. of <u>0</u> Min.		final inc. of <u>0</u> Min.	
Point Mins.	Press.	Point Minutes	Press.	Point Minutes	Press.	Point Minutes	Press.
P 1	<u>0</u> <u>63</u>	<u>0</u> <u>53</u>	<u>0</u> <u>61</u>	<u>0</u> <u>56</u>			
P 2	<u>5</u> <u>61</u>	<u>3</u> <u>58</u>	<u>5</u> <u>61</u>	<u>3</u> <u>58</u>			
P 3	<u>10</u> <u>53</u>	<u>6</u> <u>62</u>	<u>10</u> <u>Plashed Tool</u>	<u>6</u> <u>62</u>			
P 4	<u>15</u> <u>↕</u>	<u>9</u> <u>63</u>	<u>15</u> <u>63</u>	<u>9</u> <u>64</u>			
P 5	<u>20</u> <u>↕</u>	<u>12</u> <u>72</u>	<u>20</u> <u>56</u>	<u>12</u> <u>66</u>			
P 6	<u>25</u> <u>↕</u>	<u>15</u> <u>78</u>	<u>25</u> <u>56</u>	<u>15</u> <u>69</u>			
P 7	<u>30</u> <u>53</u>	<u>18</u> <u>84</u>	<u>30</u> <u>56</u>	<u>18</u> <u>71</u>			
P 8	<u>35</u> _____	<u>21</u> <u>89</u>	<u>35</u> _____	<u>21</u> <u>73</u>			
P 9	<u>40</u> _____	<u>24</u> _____	<u>40</u> _____	<u>24</u> <u>76</u>			
P 10	<u>45</u> _____	<u>27</u> _____	<u>45</u> _____	<u>27</u> <u>78</u>			
P 11	<u>50</u> _____	<u>30</u> _____	<u>50</u> _____	<u>30</u> _____			
P 12	<u>55</u> _____	<u>33</u> _____	<u>55</u> _____	<u>33</u> _____			
P 13	<u>60</u> _____	<u>36</u> _____	<u>60</u> _____	<u>36</u> _____			
P 14	_____	<u>39</u> _____	<u>65</u> _____	<u>39</u> _____			
P 15	_____	<u>42</u> _____	<u>70</u> _____	<u>42</u> _____			
P 16	_____	<u>45</u> _____	<u>75</u> _____	<u>45</u> _____			
P 17	_____	<u>48</u> _____	<u>80</u> _____	<u>48</u> _____			
P 18	_____	<u>51</u> _____	<u>85</u> _____	<u>51</u> _____			
P 19	_____	<u>54</u> _____	<u>90</u> _____	<u>54</u> _____			
P 20	_____	<u>57</u> _____	_____	<u>57</u> _____			
		<u>60</u> _____		<u>60</u> _____			

Company Petroleum Energy, Inc. Lease & Well No. Stabbert #1  
 Elevation 1723 Kelly Bushington Effective Pay ----- Ft. Ticket No. 6242  
 Date 6/11/80 Sec. 19 Twp 18S Range 9E County Rice State Kansas  
 Test Approved by Jim Musgrove Western Representative Darrell Claphan

Formation Test No. 1 Interval Tested from 3164 ft. to 3218 ft. Total Depth 3218 ft.  
 Packer Depth 3159 ft. Size 6 3/4 in. Packer Depth 3164 ft. Size 6 3/4 in.  
 Packer Depth - ft. Size - in. Packer Depth - ft. Size - in.  
 Depth of Selective Zone Set -

Top Recorder Depth (Inside) 3207 ft. Recorder Number 10266 Cap. 4650  
 Bottom Recorder Depth (Outside) 3210 ft. Recorder Number 4000 Cap. 4000  
 Below Straddle Recorder Depth - ft. Recorder Number - Cap. -

Drilling Contractor White & Ellis Drilling Rig #2 Drill Collar Length 325 I. D. 2.2 in.  
 Mud Type starch-salt-gel viscosity 40 Weight Pipe Length - I. D. - in.  
 Weight 10.1 Water Loss 16.0 cc. Drill Pipe Length 2817 I. D. 3.8 in.  
 Chlorides 83,000 P.P.M. Test Tool Length 22 ft. Tool Size 4 1/2 in.  
 Jars: Make -- Serial Number - Anchor Length 54 ft. Size 5 1/2 in.  
 Did Well Flow? No Reversed Out No Surface Choke Size 3/4 in. Bottom Choke Size 3/4 in.  
 Main Hole Size 7 7/8 in. Tool Joint Size 4 1/2 in.

Blow: First = weak blow slowly dying (died in twenty minutes.)  
Second - no blow; flushed tool, no hlep

Recovered 10 ft. of very slightly oil cut mud  
 Recovered     ft. of      
 Recovered     ft. of      
 Recovered     ft. of      
 Recovered     ft. of    

Remarks:    

Time Set Packer(s) 3:40 A.M. Time Started Off Bottom 5:40 P.M. Maximum Temperature 114°  
 Initial Hydrostatic Pressure ..... (A) 1781 P.S.I.  
 Initial Flow Period ..... Minutes 30 (B) 63 P.S.I. to (C) 53 P.S.I.  
 Initial Closed In Period ..... Minutes 21 (D) 89 P.S.I.  
 Final Flow Period ..... Minutes 30 (E) 61 P.S.I. to (F) 56 P.S.I.  
 Final Closed In Period ..... Minutes 27 (G) 78 P.S.I.  
 Final Hydrostatic Pressure ..... (H) 1648 P.S.I.

**WESTERN TESTING CO., INC.**  
**Pressure Data**

Date 6-11-80

Test Ticket No. 6242

Recorder No. 10266

Capacity 4650

Location 3207 Ft.

Clock No. -----

Elevation 1723 Kelly Bushing

Well Temperature 114 °F

Point	Pressure		Time Given	Time Computed
A Initial Hydrostatic Mud	<u>1781</u> P.S.I.	Open Tool	<u>3:40</u> A M	
B First Initial Flow Pressure	<u>63</u> P.S.I.	First Flow Pressure	<u>30</u> Mins.	<u>30</u> Mins.
C First Final Flow Pressure	<u>53</u> P.S.I.	Initial Closed-in Pressure	<u>30</u> Mins.	<u>21</u> Mins.
D Initial Closed-in Pressure	<u>89</u> P.S.I.	Second Flow Pressure	<u>30</u> Mins.	<u>30</u> Mins.
E Second Initial Flow Pressure	<u>61</u> P.S.I.	Final Closed-in Pressure	<u>30</u> Mins.	<u>27</u> Mins.
F Second Final Flow Pressure	<u>56</u> P.S.I.			
G Final Closed-in Pressure	<u>78</u> P.S.I.			
H Final Hydrostatic Mud	<u>1648</u> P.S.I.			

**PRESSURE BREAKDOWN**

**First Flow Pressure**  
Breakdown: 6 Inc.  
of 5 mins. and a  
final inc. of 0 Min.

**Initial Shut-In**  
Breakdown: 7 Inc.  
of 3 mins. and a  
final inc. of 0 Min.

**Second Flow Pressure**  
Breakdown: 6 Inc.  
of 5 mins. and a  
final inc. of 0 Min.

**Final Shut-In**  
Breakdown: 9 Inc.  
of 3 mins. and a  
final inc. of 0 Min.

Point Mins.	First Flow Pressure		Initial Shut-In		Second Flow Pressure		Final Shut-In	
	Point Minutes	Press.	Point Minutes	Press.	Point Minutes	Press.	Point Minutes	Press.
P 1	<u>0</u>	<u>63</u>	<u>0</u>	<u>53</u>	<u>0</u>	<u>61</u>	<u>0</u>	<u>56</u>
P 2	<u>5</u>	<u>61</u>	<u>3</u>	<u>58</u>	<u>5</u>	<u>61</u>	<u>3</u>	<u>58</u>
P 3	<u>10</u>	<u>53</u>	<u>6</u>	<u>62</u>	<u>10</u>	<u>63</u>	<u>6</u>	<u>62</u>
P 4	<u>15</u>	<u>53</u>	<u>9</u>	<u>63</u>	<u>15</u>	<u>63</u>	<u>9</u>	<u>64</u>
P 5	<u>20</u>	<u>53</u>	<u>12</u>	<u>72</u>	<u>20</u>	<u>56</u>	<u>12</u>	<u>66</u>
P 6	<u>25</u>	<u>53</u>	<u>15</u>	<u>78</u>	<u>25</u>	<u>56</u>	<u>15</u>	<u>69</u>
P 7	<u>30</u>	<u>53</u>	<u>18</u>	<u>84</u>	<u>30</u>	<u>56</u>	<u>18</u>	<u>71</u>
P 8			<u>21</u>	<u>89</u>			<u>21</u>	<u>73</u>
P 9							<u>24</u>	<u>76</u>
P10							<u>27</u>	<u>78</u>
P11								
P12								
P13								
P14								
P15								
P16								
P17								
P18								
P19								
P20								

Flushed Tool



# WESTERN TESTING CO., INC.

P.O. BOX 1599 — WICHITA, KANSAS 67201

WELL REPORT NO. 6243

UNIT NO.

DISTRICT

DATE 6/11/80

Petroleum Energy, Inc.  
One Twenty Building, Suite 710  
Wichita, Kansas 67202

NOTE: PER REQUEST ONE COPY TO J. MUSGROVE, CT. HEND. KS

FOR CUSTOMER'S USE ONLY	
REGISTER NO.	VOUCHER NO.
TERMS APPROVED	PRICE APPROVED
CALCULATIONS CHECKED	
ADJUSTMENTS	
ACCOUNTING DISTRIBUTION	
AUDITED	FINAL APPROVAL

YOUR ORDER NO.	OWNER	CONTRACTOR			
			SECTION	TWP.	RANGE
WELL NO.	FARM		19	18S	9W
#1	Stabbert	Rice County, Ks.			

One drill stem test from 3104' to 3226'

(Test 2)

\$ 550.00

Mileage: NO CHARGE

**POSTED**

DISCOUNT 5.50	1% DISCOUNT ALLOWED ON THIS INVOICE IF PAID BY THE 20TH OF THE FOLLOWING MONTH.	PLEASE INCLUDE OUR INVOICE NUMBER WITH YOUR REMITTANCE.	INVOICE NUMBER 6243
------------------	---	---	------------------------

SEND ALL REMITTANCES TO POST OFFICE BOX 1599, WICHITA, KANSAS 67201



WESTERN TESTING CO., INC.
FORMATION TESTING

TICKET No 6243

P. O. BOX 1599 WICHITA, KANSAS 67201
PHONE (316) 838-0601

Elevation 1723 K.B Formation ARBUCKLE Eff. Pay Ft.

District GREAT BEND Date 6/11/80 Customer Order No.

COMPANY NAME Petroleum Energy Inc. ADDRESS Suite 710 One twenty building Wichita K. 67202

LEASE AND WELL NO. Statute #1 COUNTY PRICE STATE Sec. 19 Twp 18 Rge 9W

Mail Invoice To same as above No. Copies Requested 5

Mail Charts To Co. Name One copy to Jim Musgrave 7 to Pet Energy Address No. Copies Requested 8

Formation Test No. 2 Interval Tested from 3164 ft. to 3226 ft. Total Depth 3226 ft.
Packer Depth 3159 ft. Size 6 3/4 in. Packer Depth 3164 ft. Size 6 3/4 in.
Packer Depth ft. Size in. Packer Depth ft. Size in.

Depth of Selective Zone Set
Top Recorder Depth (Inside) 3212 ft. Recorder Number 10266 Cap. 4650
Bottom Recorder Depth (Outside) 3215 ft. Recorder Number 6233 Cap. 4000
Below Straddle Recorder Depth ft. Recorder Number Cap.

Drilling Contractor WHITE & ELLIS Rig #2 Drill Collar Length 325 I. D. 2.2 in.
Mud Type Viscosity 47 Weight Pipe Length I. D. in.
Weight 10.1 Water Loss 11.2 cc. Drill Pipe Length 2817 I. D. 3.8 in.
Chlorides 84,000 P.P.M. Test Tool Length 22' ft. Tool Size 4 1/2 in.
Jars: Make Serial Number Anchor Length 62' ft. Size 5 1/2 in.
Did Well Flow? NO Reversed Out NO Surface Choke Size 3/4 in. Bottom Choke Size 3/4 in.
Main Hole Size 7 7/8 in. Tool Joint Size 4 1/2 in.

Blow: 1ST - WEAK BLOW THROUGHOUT BUILT TO 1/2" THEN DIED TO ABOUT 1/4" INTERMITTENT
2ND - NO BLOW FLUSHED TOOL - WEAK BLOW DIED IN 10 MIN

Recovered 45 ft. of #2 MUD (RANDOM OIL)
Recovered ft. of
Recovered ft. of
Recovered ft. of
Recovered ft. of

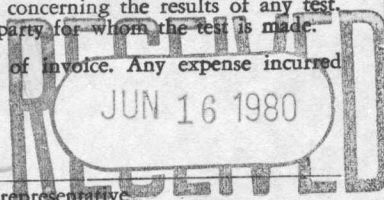
Remarks: ARRIVAL 12:45 P.M 6/11/80 APPROX. DEPARTURE 7:45 P.M 6/11/80

Time Set Packer(s) 2:20 AM P.M Time Started Off Bottom 5:05 AM P.M Maximum Temperature 114°
Initial Hydrostatic Pressure (A) 1774 P.S.I.
Initial Flow Period Minutes 45 (B) 70 P.S.I. to (C) 70 P.S.I.
Initial Closed In Period Minutes 45 (D) 469 P.S.I.
Final Flow Period Minutes 30 (E) 82 P.S.I. to (F) 93 P.S.I.
Final Closed In Period Minutes 45 (G) 476 P.S.I.
Final Hydrostatic Pressure (H) 1693 P.S.I.

COMPANY TERMS

Western Testing Co., Inc. shall not be liable for damages of any kind to the property or personnel of the one for whom a test is made or for any loss suffered or sustained directly or indirectly through the use of its equipment, of its statements or opinion concerning the results of any test. Tools lost or damaged in the hole shall be paid at cost by the party for whom the test is made. All charges subject to 12% interest after 60 days from date of invoice. Any expense incurred for collection will be added to the original amount.

Test Approved By Jim Musgrave Signature of Customer or his authorized representative
Western Representative Danell Clapham Thanks



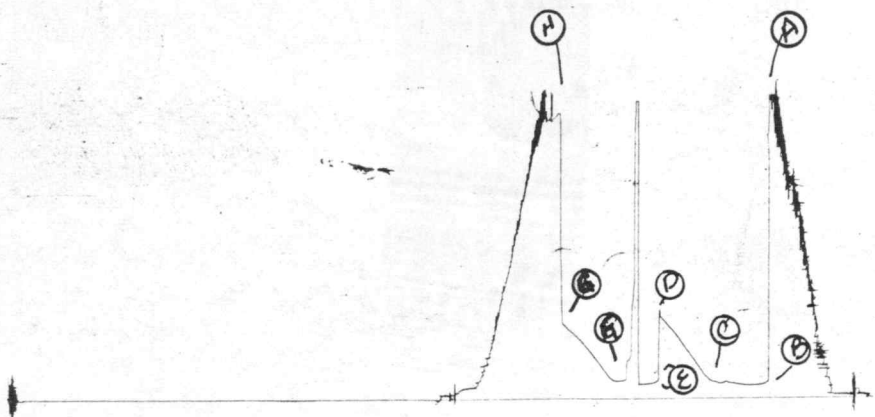
FIELD INVOICE

Open Hole Test \$550.00
Misrun \$
Straddle Test \$
Jars \$
Selective Zone \$
Safety Joint \$
Standby \$
Evaluation \$
Extra Packer \$
Circ. Sub. \$
Mileage N/C \$
Fluid Sampler \$
Extra Charts \$
TOTAL \$550.00

10000

Site # 6243

I



**WESTERN TESTING CO., INC.**  
**Pressure Data**

Date 6-11-80 Test Ticket No. 6243  
 Recorder No. 10266 Capacity 4650 Location 3212 Ft.  
 Clock No. \_\_\_\_\_ Elevation 1723 K.B. Well Temperature 114 °F

Point	Pressure		Time Given	Time Computed
A Initial Hydrostatic Mud	<u>1790</u> P.S.I.	Open Tool	<u>2:20 P</u> M	
B First Initial Flow Pressure	<u>91</u> P.S.I.	First Flow Pressure	<u>45</u> Mins.	<u>40</u> Mins.
C First Final Flow Pressure	<u>103</u> P.S.I.	Initial Closed-in Pressure	<u>45</u> Mins.	<u>39</u> Mins.
D Initial Closed-in Pressure	<u>492</u> P.S.I.	Second Flow Pressure	<u>30</u> Mins.	<u>30</u> Mins.
E Second Initial Flow Pressure	<u>93</u> P.S.I.	Final Closed-in Pressure	<u>45</u> Mins.	<u>42</u> Mins.
F Second Final Flow Pressure	<u>103</u> P.S.I.			
G Final Closed-in Pressure	<u>455</u> P.S.I.			
H Final Hydrostatic Mud	<u>1683</u> P.S.I.			

**PRESSURE BREAKDOWN**

**First Flow Pressure**  
 Breakdown: 8 Inc.  
 of 5 mins. and a  
 final inc. of 0 Min.

**Initial Shut-In**  
 Breakdown: 13 Inc.  
 of 3 mins. and a  
 final inc. of 0 Min.

**Second Flow Pressure**  
 Breakdown: 6 Inc.  
 of 5 mins. and a  
 final inc. of 0 Min.

**Final Shut-In**  
 Breakdown: 14 Inc.  
 of 3 mins. and a  
 final inc. of 0 Min.

Point Mins.	Press.	Point Minutes	Press.	Point Minutes	Press.	Point Minutes	Press.
P 1	<u>91</u>	0	<u>103</u>	0	<u>93</u>	0	<u>103</u>
P 2	<u>86</u>	3	<u>122</u>	5	<u>89</u>	3	<u>112</u>
P 3	<u>82</u>	6	<u>143</u>	10	<u>85</u>	6	<u>137</u>
P 4	<u>82</u>	9	<u>181</u>	15	<u>83</u>	9	<u>167</u>
P 5	<u>85</u>	12	<u>216</u>	20	<u>Plugged Tool</u>	12	<u>204</u>
P 6	<u>93</u>	15	<u>251</u>	25	<u>105</u>	15	<u>237</u>
P 7	<u>103</u>	18	<u>284</u>	30	<u>103</u>	18	<u>267</u>
P 8	<u>92</u>	21	<u>316</u>	35		21	<u>299</u>
P 9	<u>103</u>	24	<u>348</u>	40		24	<u>323</u>
P10		27	<u>387</u>	45		27	<u>354</u>
P11		30	<u>417</u>	50		30	<u>377</u>
P12		33	<u>439</u>	55		33	<u>401</u>
P13		36	<u>469</u>	60		36	<u>422</u>
P14		39	<u>492</u>	65		39	<u>443</u>
P15		42		70		42	<u>455</u>
P16		45		75		45	
P17		48		80		48	
P18		51		85		51	
P19		54		90		54	
P20		57				57	
		60				60	

Company Petroleum Energy, Inc. Lease & Well No. Stabbert #1  
 Elevation 1723 Kelly Bushing Formation Arbuckle Effective Pay -- Ft. Ticket No. 6243  
 Date 6/11/80 Sec. 19 Twp. 18S Range 9W County Rice State Kansas  
 Test Approved by Jim Musgrove Western Representative Darrell Claphan

Formation Test No. 2 Interval Tested from 3164 ft. to 3226 ft. Total Depth 3226 ft.  
 Packer Depth 3159 ft. Size 6 3/4 in. Packer Depth 3164 ft. Size 6 3/4 in.  
 Packer Depth - ft. Size - in. Packer Depth - ft. Size - in.  
 Depth of Selective Zone Set -

Top Recorder Depth (Inside) 3212 ft. Recorder Number 10266 Cap. 4650  
 Bottom Recorder Depth (Outside) 3215 ft. Recorder Number 6233 Cap. 4000  
 Below Straddle Recorder Depth - ft. Recorder Number - Cap. -

Drilling Contractor White & Ellis Drilling Rig #2 Drill Collar Length 325 I. D. 2.2 in.  
 Mud Type - Viscosity 47 Weight Pipe Length - I. D. - in.  
 Weight 10.1 Water Loss 11.2 cc. Drill Pipe Length 2817 I. D. 3.8 in.  
 Chlorides 84,000 P.P.M. Test Tool Length 72 ft. Tool Size 4 1/2 in.  
 Jars: Make - Serial Number - Anchor Length 62 ft. Size 5 1/2 in.  
 Did Well Flow? No Reversed Out No Surface Choke Size 3/4 in. Bottom Choke Size 3/4 in.  
 Main Hole Size 7 7/8 in. Tool Joint Size 4 1/2 in.

Blow: First - weak blow throughout ; built to one half inch then died to about one fourth inch  
intermittently; Second - no blow; flushed tool; weak blow; died in ten minutes.

Recovered 45 ft. of mud (rainbow of oil)  
 Recovered        ft. of         
 Recovered        ft. of         
 Recovered        ft. of         
 Recovered        ft. of       

Remarks:       

Time Set Packer(s) 2:00 A.M. Time Started Off Bottom 5:05 P.M. Maximum Temperature 114 ±  
 Initial Hydrostatic Pressure ..... (A) 1790 P.S.I.  
 Initial Flow Period ..... Minutes 40 (B) 91 P.S.I. to (C) 103 P.S.I.  
 Initial Closed In Period ..... Minutes 39 (D) 492 P.S.I.  
 Final Flow Period ..... Minutes 30 (E) 93 P.S.I. to (F) 103 P.S.I.  
 Final Closed In Period ..... Minutes 42 (G) 455 P.S.I.  
 Final Hydrostatic Pressure ..... (H) 1683 P.S.I.

**WESTERN TESTING CO., INC.**  
**Pressure Data**

Date 6-11-80 Test Ticket No. 6243  
 Recorder No. 10266 Capacity 4650 Location 3212 Ft.  
 Clock No. ----- Elevation 1723 Kelly Bushing Well Temperature 114 °F

Point	Pressure		Time Given	Time Computed
A Initial Hydrostatic Mud	<u>1790</u> P.S.I.	Open Tool	<u>2:20</u> P M	
B First Initial Flow Pressure	<u>91</u> P.S.I.	First Flow Pressure	<u>45</u> Mins.	<u>40</u> Mins.
C First Final Flow Pressure	<u>103</u> P.S.I.	Initial Closed-in Pressure	<u>45</u> Mins.	<u>39</u> Mins.
D Initial Closed-in Pressure	<u>492</u> P.S.I.	Second Flow Pressure	<u>30</u> Mins.	<u>30</u> Mins.
E Second Initial Flow Pressure	<u>93</u> P.S.I.	Final Closed-in Pressure	<u>45</u> Mins.	<u>42</u> Mins.
F Second Final Flow Pressure	<u>103</u> P.S.I.			
G Final Closed-in Pressure	<u>455</u> P.S.I.			
H Final Hydrostatic Mud	<u>1683</u> P.S.I.			

**PRESSURE BREAKDOWN**

**First Flow Pressure**  
 Breakdown: 8 Inc.  
 of 5 mins. and a  
 final inc. of 0 Min.

**Initial Shut-In**  
 Breakdown: 13 Inc.  
 of 3 mins. and a  
 final inc. of 0 Min.

**Second Flow Pressure**  
 Breakdown: 6 Inc.  
 of 5 mins. and a  
 final inc. of 0 Min.

**Final Shut-In**  
 Breakdown: 14 Inc.  
 of 3 mins. and a  
 final inc. of 0 Min.

Point Mins.	Press.	Point Minutes	Press.	Point Minutes	Press.	Point Minutes	Press.
P 1 <u>0</u>	<u>103</u>	<u>0</u>	<u>103</u>	<u>0</u>	<u>93</u>	<u>0</u>	<u>103</u>
P 2 <u>5</u>	<u>86</u>	<u>3</u>	<u>122</u>	<u>5</u>	<u>89</u>	<u>3</u>	<u>112</u>
P 3 <u>10</u>	<u>82</u>	<u>6</u>	<u>143</u>	<u>10</u>	<u>85</u>	<u>6</u>	<u>137</u>
P 4 <u>15</u>	<u>82</u>	<u>9</u>	<u>181</u>	<u>15</u>	<u>83</u>	<u>9</u>	<u>167</u>
P 5 <u>20</u>	<u>85</u>	<u>12</u>	<u>216</u>	<u>20</u>	<u>105</u>	<u>12</u>	<u>204</u>
P 6 <u>25</u>	<u>93</u>	<u>15</u>	<u>251</u>	<u>25</u>	<u>105</u>	<u>15</u>	<u>237</u>
P 7 <u>30</u>	<u>103</u>	<u>18</u>	<u>284</u>	<u>30</u>	<u>103</u>	<u>18</u>	<u>267</u>
P 8 <u>35</u>	<u>92</u>	<u>21</u>	<u>316</u>			<u>21</u>	<u>299</u>
P 9 <u>40</u>	<u>103</u>	<u>24</u>	<u>348</u>			<u>24</u>	<u>323</u>
P10		<u>27</u>	<u>387</u>			<u>27</u>	<u>354</u>
P11		<u>30</u>	<u>417</u>			<u>30</u>	<u>377</u>
P12		<u>33</u>	<u>439</u>			<u>33</u>	<u>401</u>
P13		<u>36</u>	<u>469</u>			<u>36</u>	<u>422</u>
P14		<u>39</u>	<u>492</u>			<u>39</u>	<u>443</u>
P15						<u>42</u>	<u>455</u>
P16							
P17							
P18							
P19							
P20							



# WESTERN TESTING CO., INC.

P.O. BOX 1599 — WICHITA, KANSAS 67201

DATE 6/12/80

Petroleum Energy, Inc.  
One Twenty Building, Suite 710  
Wichita, Kansas 67202

NOTE: ONE COPY TO J. C. MUSGROVE, ST. BEND, KS.

PER REQUEST

YOUR ORDER NO.		OWNER	CONTRACTOR		AUDITED		FINAL APPROVAL	
WELL NO.	FARM		SECTION	TWP.	RANGE			
#1		Stabbert	19	18S	9W			

One drill stem test from 3164' to 3233' (Test 3)

\$ 550.00

Mileage: No Charge

**POSTED**

DISCOUNT 5.50	1% DISCOUNT ALLOWED ON THIS INVOICE IF PAID BY THE 20 <sup>TH</sup> OF THE FOLLOWING MONTH.	PLEASE INCLUDE OUR INVOICE NUMBER WITH YOUR REMITTANCE.	INVOICE NUMBER 6244
------------------	---	---	------------------------

SEND ALL REMITTANCES TO POST OFFICE BOX 1599, WICHITA, KANSAS 67201

WELL REPORT NO. 6244

UNIT NO.

DISTRICT

FOR CUSTOMER'S USE ONLY

REGISTER NO.

VOUCHER NO.

TERMS APPROVED

PRICE APPROVED

CALCULATIONS CHECKED

ADJUSTMENTS

ACCOUNTING DISTRIBUTION



WESTERN TESTING CO., INC.

FORMATION TESTING

TICKET No 6244

P. O. BOX 1599 PHONE (316) 838-0601 WICHITA, KANSAS 67201

Elevation 1723 K.B Formation ARBUCKLE Eff. Pay Ft.

District GREAT BEND Date 6/12/80 Customer Order No.
COMPANY NAME PETROLEUM ENERGY, Inc.
ADDRESS SUITE 710 120 BUILDING WICHITA, KS. 67202
LEASE AND WELL NO. STABBERT #1 COUNTY RICE STATE KS Sec. 19 Twp 18S Rge 9W
Mail Invoice To SAME AS ABOVE No. Copies Requested 5
Co. Name Address
Mail Charts To SAME AS ABOVE No. Copies Requested 5

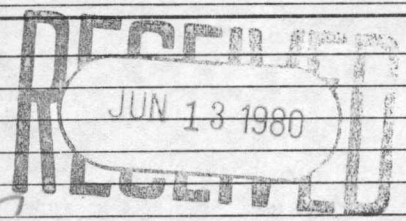
Formation Test No. 3 Interval Tested from 3164 ft. to 3233 ft. Total Depth 3233 ft.
Packer Depth 3159 ft. Size 6 3/4 in. Packer Depth 3164 ft. Size 6 3/4 in.
Packer Depth ft. Size in. Packer Depth ft. Size in.
Depth of Selective Zone Set

Top Recorder Depth (Inside) 3217 ft. Recorder Number 10266 Cap. 4650
Bottom Recorder Depth (Outside) 3220 ft. Recorder Number 6233 Cap. 4000
Below Straddle Recorder Depth ft. Recorder Number Cap.

Drilling Contractor WHITE & LEWIS Rig #2 Drill Collar Length 325 I. D. 2.2 in.
Mud Type STARCH SALT-GEL Viscosity 47 Weight Pipe Length I. D. in.
Weight 10.1 Water Loss 16.0 cc. Drill Pipe Length 2817 I. D. 3.8 in.
Chlorides 83,000 P.P.M. Test Tool Length 22' ft. Tool Size 4 1/2 in.
Jars: Make Serial Number Anchor Length 69' ft. Size 5 1/2 in.
Did Well Flow? NO Reversed Out NO Surface Choke Size 3/4 in. Bottom Choke Size 3/4 in.
Main Hole Size 7 7/8 in. Tool Joint Size 4 1/2 in.

Blow: 1ST - WEAK BLOW BUILDING TO 2" IN BUCKET
2ND - WEAK BLOW THROUGHOUT - SURGING

Recovered 60 ft. of MUD (RAINBOW/OIL)
Recovered 60 ft. of THIN WATERY MUD (Sulfur odor)
Recovered ft. of
Recovered ft. of
Recovered ft. of



Remarks: SLED TOOL APPRX. 6' TO BOTTOM
HAD TROUBLE WITH MUD PUMP ON INITIAL SHUT IN
STAYED ON LOCATION AFTER DST #2 APPRX. DEPARTURE

Time Set Packer(s) 2:20 A.M. Time Started Off Bottom 5:45 A.M. Maximum Temperature 116°
Initial Hydrostatic Pressure (A) 1797 P.S.I.
Initial Flow Period Minutes 45 (B) 117 P.S.I. to (C) 117 P.S.I.
Initial Closed In Period Minutes 60 (D) 1006 P.S.I.
Final Flow Period Minutes 45 (E) 129 P.S.I. to (F) 129 P.S.I.
Final Closed In Period Minutes 45 (G) 936 P.S.I.
Final Hydrostatic Pressure (H) 1716 P.S.I.

COMPANY TERMS

Western Testing Co., Inc. shall not be liable for damages of any kind to the property or personnel of the one for whom a test is made or for any loss suffered or sustained directly or indirectly through the use of its equipment, of its statements or opinion concerning the results of any test. Tools lost or damaged in the hole shall be paid at cost by the party for whom the test is made.

All charges subject to 12% interest after 60 days from date of invoice. Any expense incurred for collection will be added to the original amount.

Test Approved By [Signature] Signature of Customer or his authorized representative
Western Representative [Signature] Daniel Clapham

Thanks,

Note: Hold for first 2 copies if the document reach them

FIELD INVOICE

Open Hole Test \$ 550.00
Misrun \$
Straddle Test \$
Jars \$
Selective Zone \$
Safety Joint \$
Standby \$
Evaluation \$
Extra Packer \$
Circ. Sub. \$
Mileage N/C \$
Fluid Sampler \$
Extra Charts \$
TOTAL \$ 550.00

483-2627  
Russell

793-5861  
Great Bend

**ALLIED  
CEMENTING CO., INC.**

825-4618  
Kiowa

434-2812  
Plainville

*Send*

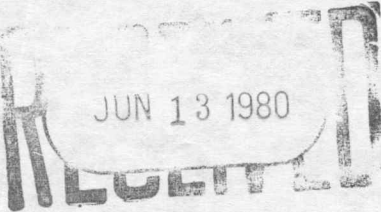
*Hold for  
Test # 1*

*Test # 2*

*Jim Musgrave  
1 copy of charts  
on all 3 tests  
to Roxanna Corp.  
Great Bend, Ks.  
67830*

*Thanks  
Dan*

JUN 13 1980



# WESTERN TESTING CO., INC.

## Pressure Data

Date 6-12-80 Recorder No. 10266 Capacity 4650 Test Ticket No. 6244  
 Clock No. \_\_\_\_\_ Elevation 1723 XB Location 3217 Ft. \_\_\_\_\_  
 Well Temperature 116 °F

Point	Pressure	P.S.I.	Open Tool	Time Given	Time Computed
A Initial Hydrostatic Mud	<u>1794</u>	P.S.I.	Open Tool	<u>2:20</u>	<u>A M</u>
B First Initial Flow Pressure	<u>126</u>	P.S.I.	First Flow Pressure	<u>45</u>	Mins. <u>45</u> Mins.
C First Final Flow Pressure	<u>113</u>	P.S.I.	Initial Closed-in Pressure	<u>60</u>	Mins. <u>63</u> Mins.
D Initial Closed-in Pressure	<u>1019</u>	P.S.I.	Second Flow Pressure	<u>45</u>	Mins. <u>45</u> Mins.
E Second Initial Flow Pressure	<u>133</u>	P.S.I.	Final Closed-in Pressure	<u>45</u>	Mins. <u>45</u> Mins.
F Second Final Flow Pressure	<u>133</u>	P.S.I.			
G Final Closed-in Pressure	<u>931</u>	P.S.I.			
H Final Hydrostatic Mud	<u>1723</u>	P.S.I.			

### PRESSURE BREAKDOWN

**First Flow Pressure**  
 Breakdown: 9 Inc.  
 of 5 mins. and a  
 final inc. of 0 Min.

**Initial Shut-In**  
 Breakdown: 21 Inc.  
 of 3 mins. and a  
 final inc. of 0 Min.

**Second Flow Pressure**  
 Breakdown: 9 Inc.  
 of 5 mins. and a  
 final inc. of 0 Min.

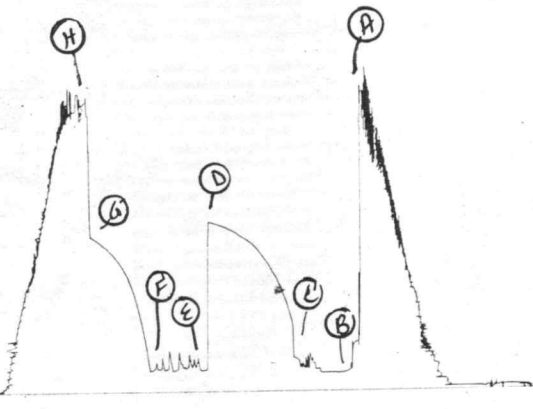
**Final Shut-In**  
 Breakdown: 15 Inc.  
 of 3 mins. and a  
 final inc. of 0 Min.

Point Mins.	Press.	Point Minutes	Press.	Point Minutes	Press.	Point Minutes	Press.
P 1 <u>0</u>	<u>126</u>	<u>0</u>	<u>113</u>	<u>0</u>	<u>133</u>	<u>0</u>	<u>133</u>
P 2 <u>5</u>	<u>116</u>	<u>3</u>	<u>461</u>	<u>5</u>	<u>137</u>	<u>3</u>	<u>296</u>
P 3 <u>10</u>	<u>113</u>	<u>6</u>	<u>543</u>	<u>10</u>	Plugging Action 	<u>6</u>	<u>420</u>
P 4 <u>15</u>		<u>9</u>	<u>610</u>	<u>15</u>		<u>9</u>	<u>520</u>
P 5 <u>20</u>	<u>113</u>	<u>12</u>	<u>659</u>	<u>20</u>		<u>12</u>	<u>607</u>
P 6 <u>25</u>		<u>15</u>	<u>701</u>	<u>25</u>		<u>15</u>	<u>675</u>
P 7 <u>30</u>		<u>18</u>	<u>745</u>	<u>30</u>		<u>18</u>	<u>726</u>
P 8 <u>35</u>		<u>21</u>	<u>783</u>	<u>35</u>		<u>21</u>	<u>762</u>
P 9 <u>40</u>		<u>24</u>	<u>818</u>	<u>40</u>		<u>24</u>	<u>794</u>
P10 <u>45</u>	<u>113</u>	<u>27</u>	<u>847</u>	<u>45</u>		<u>27</u>	<u>829</u>
P11 <u>50</u>		<u>30</u>	<u>879</u>	<u>50</u>		<u>30</u>	<u>851</u>
P12 <u>55</u>		<u>33</u>	<u>900</u>	<u>55</u>		<u>33</u>	<u>873</u>
P13 <u>60</u>		<u>36</u>	<u>916</u>	<u>60</u>	<u>36</u>	<u>897</u>	
P14 _____		<u>39</u>	<u>935</u>	<u>65</u>	<u>39</u>	<u>913</u>	
P15 _____		<u>42</u>	<u>949</u>	<u>70</u>	<u>42</u>	<u>928</u>	
P16 _____		<u>45</u>	<u>965</u>	<u>75</u>	<u>45</u>	<u>931</u>	
P17 _____		<u>48</u>	<u>978</u>	<u>80</u>	<u>48</u>		
P18 _____		<u>51</u>	<u>990</u>	<u>85</u>	<u>51</u>		
P19 _____		<u>54</u>	<u>999</u>	<u>90</u>	<u>54</u>		
P20 _____		<u>57</u>	<u>1007</u>		<u>57</u>		
WTC - 4		<u>60</u>	<u>1018</u>		<u>60</u>		
		<u>63</u>	<u>1019</u>				

10266

TKT # 6244

I



Company Petroleum Energy, Inc. Lease & Well No. Stabbert #1  
 Elevation 1723 Kelly Bushing Arbuckle Formation Effective Pay ---- Ft. Ticket No. 6244  
 Date 6/12/80 Sec. 19 Twp. 18S Range 9W County Rice State Kansas  
 Test Approved by Jim Musgrove Western Representative Darrell Claphan

Formation Test No. 3 Interval Tested from 3164 ft. to 3233 ft. Total Depth 3233 ft.  
 Packer Depth 3159 ft. Size 6 3/4 in. Packer Depth 3164 ft. Size 6 3/4 in.  
 Packer Depth - ft. Size - in. Packer Depth - ft. Size - in.  
 Depth of Selective Zone Set -

Top Recorder Depth (Inside) 3217 ft. Recorder Number 10266 Cap. 4650  
 Bottom Recorder Depth (Outside) 3220 ft. Recorder Number 6233 Cap. 4000  
 Below Straddle Recorder Depth - ft. Recorder Number - Cap. -

Drilling Contractor White & Ellis Drilling Rig # D Drill Collar Length 325 I. D. 2.2 in.  
 Mud Type starch-salt-gel Viscosity 47 Weight Pipe Length - I. D. - in.  
 Weight 10.1 Water Loss 16.0 cc. Drill Pipe Length 2817 I. D. 3.8 in.  
 Chlorides 83,000 P.P.M. Test Tool Length 22 ft. Tool Size 4 1/2 in.  
 Jars: Make - Serial Number - Anchor Length 69 ft. Size 5 1/2 in.  
 Did Well Flow? No Reversed Out No Surface Choke Size 3/4 in. Bottom Choke Size 3/4 in.  
 Main Hole Size 7 7/8 in. Tool Joint Size 4 1/2 in.

Blow: First - weak blow building to two inches in bucket.  
Second - weak blow throughout - surging.

Recovered 60 ft. of mud (rainbow of oil)  
 Recovered 60 ft. of thin watery mud (sulphur odor)  
 Recovered          ft. of           
 Recovered          ft. of           
 Recovered          ft. of         

Remarks: Slid tool approximately six feet to bottom. Had trouble with mud pump on initial shut-in.

Time Set Packer(s)	<u>2:20</u>	<u>A.M.</u> <u>P.M.</u>	Time Started Off Bottom	<u>5:45</u>	<u>A.M.</u> <u>P.M.</u>	Maximum Temperature	<u>116°</u>
Initial Hydrostatic Pressure			(A)	<u>1794</u>	P.S.I.		
Initial Flow Period			Minutes <u>45</u>	(B)	<u>126</u>	P.S.I. to (C)	<u>113</u> P.S.I.
Initial Closed In Period			Minutes <u>63</u>	(D)	<u>1019</u>	P.S.I.	
Final Flow Period			Minutes <u>45</u>	(E)	<u>133</u>	P.S.I. to (F)	<u>133</u> P.S.I.
Final Closed In Period			Minutes <u>45</u>	(G)	<u>931</u>	P.S.I.	
Final Hydrostatic Pressure			(H)	<u>1723</u>	P.S.I.		

