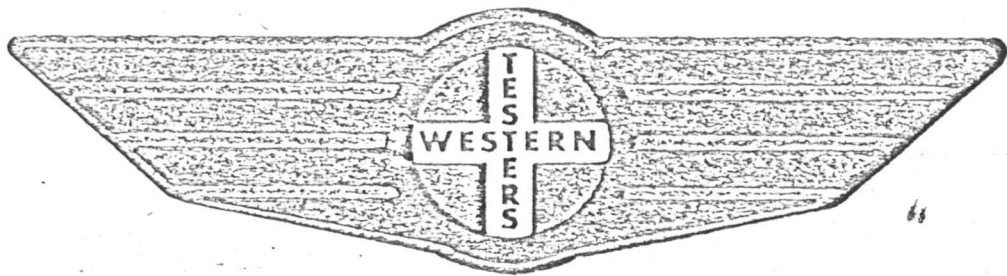


# FORMATION

# TEST

# REPORT



Home Office:

Wichita, Kansas 67201

P.O. Box 1599

Phone (316) 262-5861

Company RAINS & WILLIAMSON OIL CO INCL. & Well No. # 1 KNIGHT  
Sec. 11 Twp. 18s Rge. 9w Test No. 1 Date 10/7/85

WESTERN TESTING CO. INC.  
SUBSURFACE PRESSURE SURVEY

DATE: 10/7/85  
 CUSTOMER: RAINS & WILLIAMSON OIL CO INC  
 WELL: 1 TEST: 1  
 ELEVATION (KB): 1747 FORMATION: CONGLOMERATE  
 SECTION: 11 TOWNSHIP: 18S  
 RANGE: 9W COUNTY: RICE STATE: KANSAS  
 GAUGE SN #13762 RANGE: 3925 CLOCK: 12

INTERVAL TEST FROM: 3221 FT TO: 3247 FT TOTAL DEPTH: 3247 FT  
 DEPTH OF SELECTIVE ZONE: FT  
 PACKER DEPTH: 3216 FT SIZE: 6 5/8 IN PACKER DEPTH: 3221 FT SIZE: 6 5/8 IN  
 PACKER DEPTH: FT SIZE: IN PACKER DEPTH: FT SIZE: IN

DRILLING CONTRACTOR: RAINS & WILLIAMSON  
 MUD TYPE: STARCH VISCOSITY: 45  
 WEIGHT: 9.9 WATER LOSS (CC): 13.6  
 CHLORIDES (P.P.M.): 56000  
 JARS - MAKE: SERIAL NUMBER:  
 DID WELL FLOW? REVERSED OUT?  
 DRILL COLLAR LENGTH: 60 FT I.D.: 2.25 IN  
 WEIGHT PIPE LENGTH: FT I.D.: IN  
 DRILL PIPE LENGTH: 3140 FT I.D.: 3.8 IN  
 TEST TOOL LENGTH: 21 FT TOOL SIZE: 5 1/2 OD IN  
 ANCHOR LENGTH: 26 FT SIZE: 5 1/2 OD IN  
 SURFACE CHOKE SIZE: 3/4 IN BOTTOM CHOKE SIZE: 3/4 IN  
 MAIN HOLE SIZE: 7 7/8 IN TOOL JOINT SIZE: 4 1/2 XH IN

BLOW: INITIAL FLOW PERIOD WEAK BLOW.  
 DIED IN 13 MINUTES. FINAL FLOW  
 PERIOD NO BLOW. FLUSHED TOOL;  
 GOT SURGE; REMAINED DEAD.

RECOVERED: 5 FT OF: MUD WITH A FEW OIL SPECKS.  
 RECOVERED: FT OF:  
 RECOVERED: FT OF:  
 RECOVERED: FT OF:  
 RECOVERED: FT OF:  
 RECOVERED: FT OF:  
 RECOVERED: FT OF:  
 RECOVERED: FT OF:  
 RECOVERED: FT OF:

REMARKS:

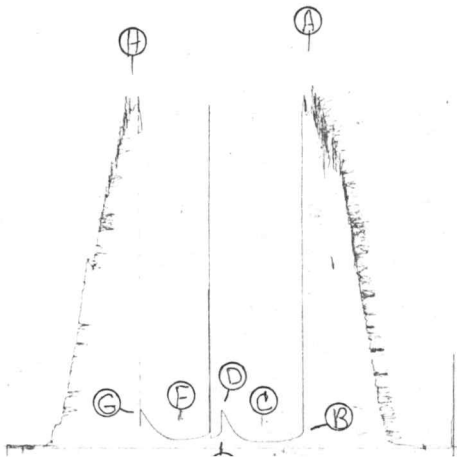
TIME SET PACKER(S): 9:10 AM TIME STARTED OFF BOTTOM: 11:10 AM  
 WELL TEMPERATURE: 108 °F  
 INITIAL HYDROSTATIC PRESSURE: (A) 1752 PSI  
 INITIAL FLOW PERIOD MIN: 30 (B) 74 PSI TO (C) 31 PSI  
 INITIAL CLOSED IN PERIOD MIN: 30 (D) 183 PSI  
 FINAL FLOW PERIOD MIN: 30 (E) 78 PSI TO (F) 40 PSI  
 FINAL CLOSED IN PERIOD MIN: 30 (G) 184 PSI  
 FINAL HYDROSTATIC PRESSURE (H) 1719 PSI



Wet. # 10447

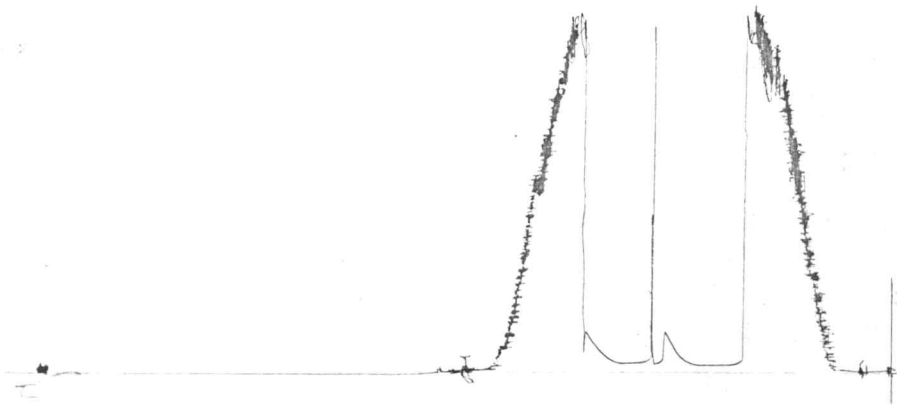
I

DET#1  
13762



18/59  
DOME

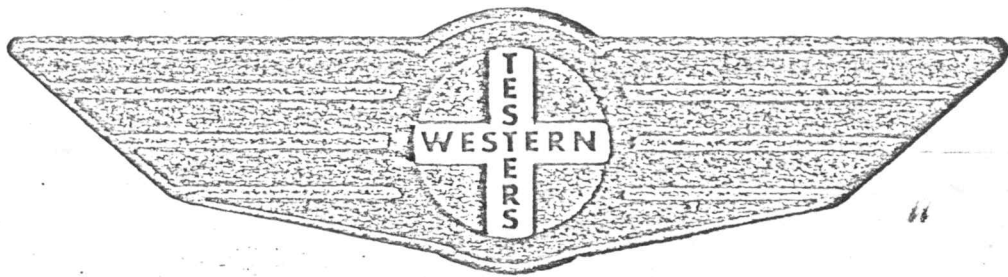
YRF. #10447  
O



# FORMATION

# TEST

# REPORT



Home Office:

Wichita, Kansas 67201

P.O. Box 1599

Phone (316) 262-5861

WESTERN TESTING CO. INC.  
SUBSURFACE PRESSURE SURVEY

DATE: 10/7/85  
 CUSTOMER: RAINS & WILLIAMSON OIL CO INC  
 WELL: 1 TEST: 2  
 ELEVATION (KB): 1747 FORMATION: CONGLOMERATE  
 SECTION: 11 TOWNSHIP: 18S  
 RANGE: 9W COUNTY: RICE STATE: KANSAS  
 GAUGE SN #13762 RANGE: 3925 CLOCK: 12

INTERVAL TEST FROM: 3220 FT TO: 3253 FT TOTAL DEPTH: 3253 FT  
 DEPTH OF SELECTIVE ZONE: FT  
 PACKER DEPTH: 3215 FT SIZE: 6 5/8 IN PACKER DEPTH: 3220 FT SIZE: 6 5/8 IN  
 PACKER DEPTH: FT SIZE: IN PACKER DEPTH: FT SIZE: IN

DRILLING CONTRACTOR: RAINS & WILLIAMSON  
 MUD TYPE: STARCH VISCOSITY: 45  
 WEIGHT: 9.9 WATER LOSS (CC): 13.6  
 CHLORIDES (P.P.M.): 56000  
 JARS - MAKE: SERIAL NUMBER:  
 DID WELL FLOW? REVERSED OUT?  
 DRILL COLLAR LENGTH: 60 FT I.D.: 2.25 IN  
 WEIGHT PIPE LENGTH: FT I.D.: IN  
 DRILL PIPE LENGTH: 3139 FT I.D.: 3.8 IN  
 TEST TOOL LENGTH: 21 FT TOOL SIZE: 5 1/2 OD IN  
 ANCHOR LENGTH: 33 FT SIZE: 5 1/2 OD IN  
 SURFACE CHOKE SIZE: 3/4 IN BOTTOM CHOKE SIZE: 3/4 IN  
 MAIN HOLE SIZE: 7 7/8 IN TOOL JOINT SIZE: 4 1/2 XH IN

BLOW: STRONG BLOW OFF BOTTOM OF BUCKET  
 THROUGHOUT TEST.

RECOVERED: 240	FT	OF: GAS ABOVE FLUID.
RECOVERED: 5	FT	OF: FREE CLEAN OIL.
RECOVERED: 30	FT	OF: SLIGHTLY OIL & GAS CUT MUD.
RECOVERED:	FT	OF: (25% GAS; 12% OIL; 63% MUD).
RECOVERED: 660	FT	OF: SLIGHTLY OIL CUT GASSY WATER.
RECOVERED:	FT	OF: (80% GAS; 10% OIL; 10% WATER).
RECOVERED: 120	FT	OF: VERY HEAVY GAS CUT SLIGHTLY OIL CUT WATER.
RECOVERED:	FT	OF: (80% GAS; 5% OIL; 15% WATER).
RECOVERED: 660	FT	OF: SALT WATER (100%).

REMARKS: CHLORIDES 30000 PPM.

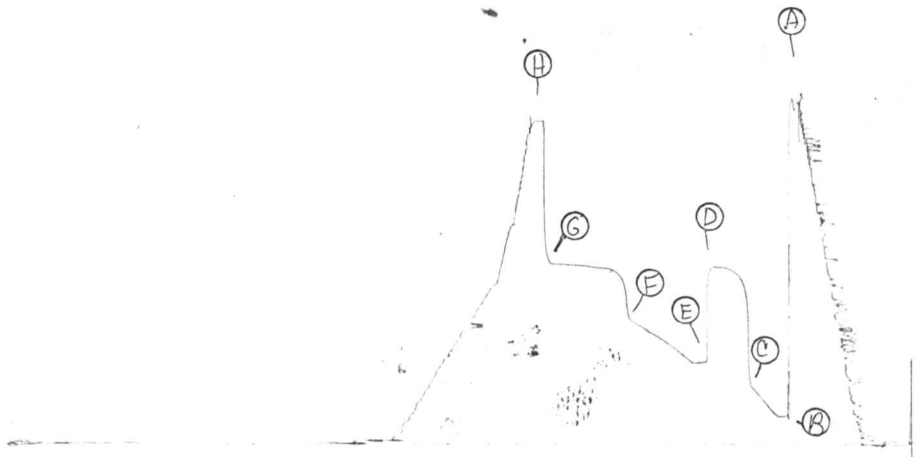
TIME SET PACKER(S): 9:05 PM TIME STARTED OFF BOTTOM: 12:05 AM  
 WELL TEMPERATURE: 110 °F  
 INITIAL HYDROSTATIC PRESSURE: (A) 1725 PSI  
 INITIAL FLOW PERIOD MIN: 30 (B) 141 PSI TO (C) 289 PSI  
 INITIAL CLOSED IN PERIOD MIN: 30 (D) 890 PSI  
 FINAL FLOW PERIOD MIN: 55 (E) 406 PSI TO (F) 614 PSI  
 FINAL CLOSED IN PERIOD MIN: 57 (G) 904 PSI  
 FINAL HYDROSTATIC PRESSURE (H) 1621 PSI



13762

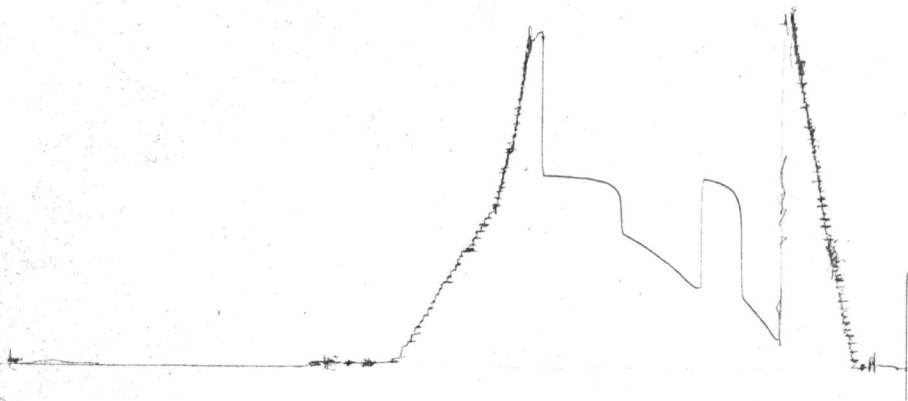
DST # 2

YR. # 10448  
I



13754  
DST 2

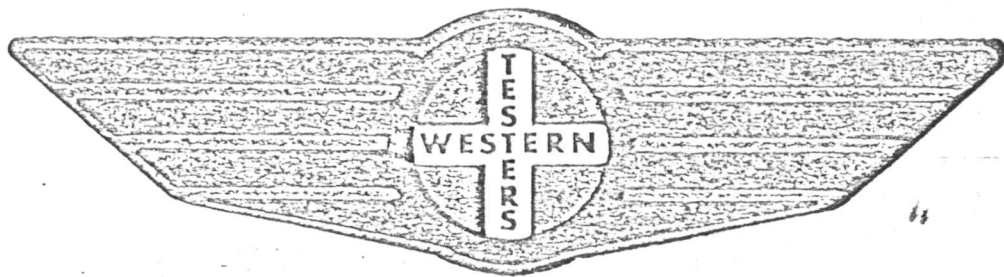
4.12 #10448  
0



# FORMATION

# TEST

# REPORT



Home Office:

Wichita, Kansas 67201

P.O. Box 1599

Phone (316) 262-5861

Company RAINS & WILLIAMSON OIL CO INC Lease & Well No. #1 KNIGHT  
Sec. 11 Twp. 18s Rge. 9w Test No. 3 Date 10/8/85

WESTERN TESTING CO. INC.  
SUBSURFACE PRESSURE SURVEY

DATE: 10/8/85 TICKET #10449  
CUSTOMER: RAINS & WILLIAMSON OIL CO INC LEASE: KNIGHT  
WELL: 1 TEST: 3 GEOLOGIST: ENGELBRECHT  
ELEVATION (KB): 1747 FORMATION: CONGLOMERATE  
SECTION: 11 TOWNSHIP: 18S  
RANGE: 9W COUNTY: RICE STATE: KANSAS  
GAUGE SN #13762 RANGE: 3925 CLOCK: 12

INTERVAL TEST FROM: 3253 FT TO: 3258 FT TOTAL DEPTH: 3258 FT  
DEPTH OF SELECTIVE ZONE: FT  
PACKER DEPTH: 3253 FT SIZE: 6 5/8 IN PACKER DEPTH: FT SIZE: IN  
PACKER DEPTH: FT SIZE: IN PACKER DEPTH: FT SIZE: IN

DRILLING CONTRACTOR: RAINS & WILLIAMSON  
MUD TYPE: STARCH VISCOSITY: 43  
WEIGHT: 9.9 WATER LOSS (CC): 13.0  
CHLORIDES (P.P.M.): 58000  
JARS - MAKE: SERIAL NUMBER:  
DID WELL FLOW? REVERSED OUT?  
DRILL COLLAR LENGTH: 60 FT I.D.: 2.25 IN  
WEIGHT PIPE LENGTH: FT I.D.: IN  
DRILL PIPE LENGTH: 3174 FT I.D.: 3.8 IN  
TEST TOOL LENGTH: 19 FT TOOL SIZE: 5 1/2 OD IN  
ANCHOR LENGTH: 5 FT SIZE: 5 1/2 OD IN  
SURFACE CHOKE SIZE: 3/4 IN BOTTOM CHOKE SIZE: 3/4 IN  
MAIN HOLE SIZE: 7 7/8 IN TOOL JOINT SIZE: 4 1/2 XH IN

BLOW: INITIAL FLOW PERIOD STRONG BLOW  
OFF BOTTOM OF BUCKET. FINAL FLOW  
PERIOD STRONG BLOW. OFF BOTTOM  
OF BUCKET IN 5 MINUTES.

RECOVERED: 1620 FT OF: SALT WATER WITH SCUM OF OIL.  
RECOVERED: FT OF: CHLORIDES 20000 PPM.  
RECOVERED: FT OF:  
RECOVERED: FT OF:  
RECOVERED: FT OF:  
RECOVERED: FT OF:  
RECOVERED: FT OF:  
RECOVERED: FT OF:  
RECOVERED: FT OF:

REMARKS: RAN SINGLE PACKER.

TIME SET PACKER(S): 12:40 PM TIME STARTED OFF BOTTOM: 3:10 PM  
WELL TEMPERATURE: 0 °F  
INITIAL HYDROSTATIC PRESSURE: (A) 1743 PSI  
INITIAL FLOW PERIOD MIN: 30 (B) 176 PSI TO (C) 364 PSI  
INITIAL CLOSED IN PERIOD MIN: 30 (D) 926 PSI  
FINAL FLOW PERIOD MIN: 55 (E) 500 PSI TO (F) 707 PSI  
FINAL CLOSED IN PERIOD MIN: 30 (G) 922 PSI  
FINAL HYDROSTATIC PRESSURE (H) 1722 PSI

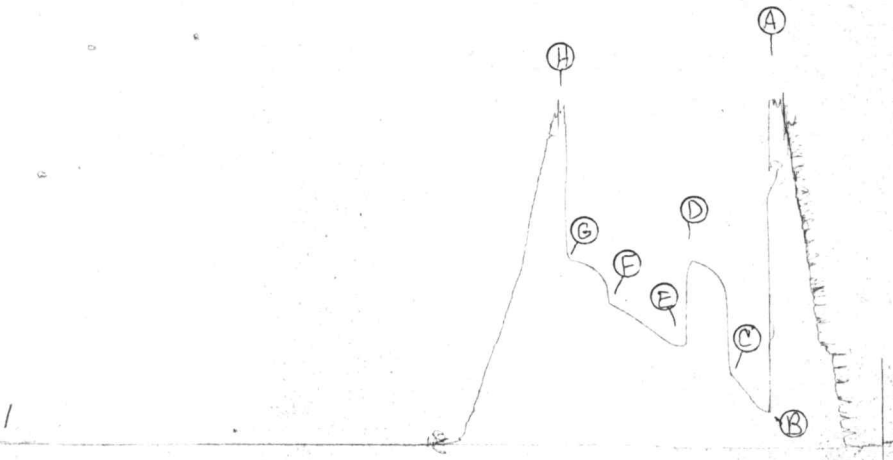


13762

DST#3

Yr #10449

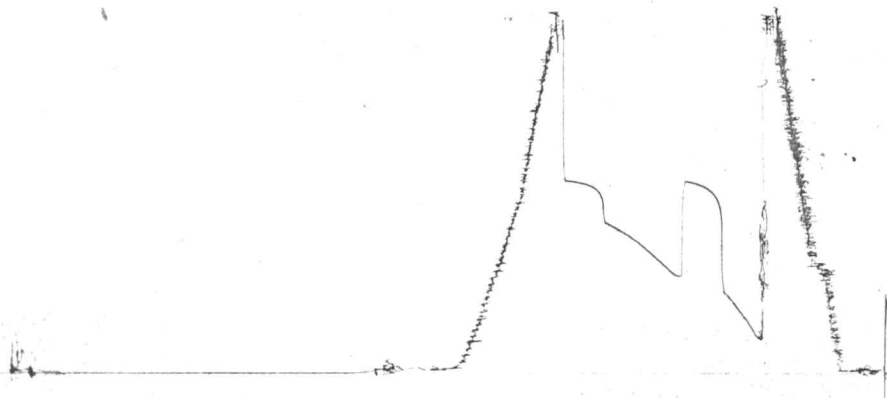
I



13759

DST#3

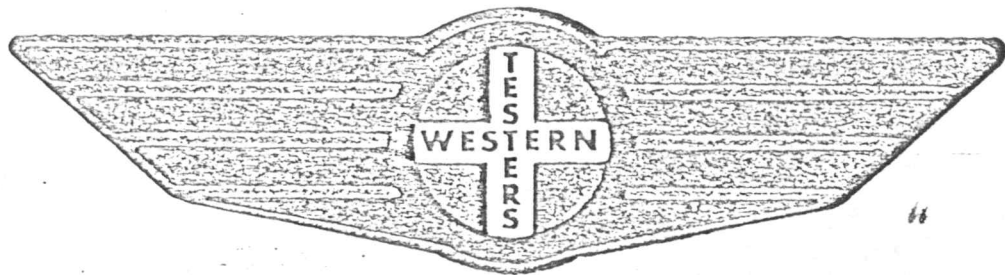
420. #10449  
0



# FORMATION

# TEST

# REPORT



Home Office:

Wichita, Kansas 67201

P.O. Box 1599

Phone (316) 262-5861

WESTERN TESTING CO. INC.  
SUBSURFACE PRESSURE SURVEY

DATE: 10/9/85  
CUSTOMER: RAINS & WILLIAMSON OIL CO INC  
WELL: 1 TEST: 4  
ELEVATION (KB): 1747 FORMATION: ARBUCKLE  
SECTION: 11 TOWNSHIP: 18S  
RANGE: 9W COUNTY: RICE STATE: KANSAS  
GAUGE SN #13762 RANGE: 3925 CLOCK: 12

TICKET #10450  
LEASE: KNIGHT  
GEOLOGIST: ENGELBRECHT

INTERVAL TEST FROM: 3287 FT TO: 3292 FT TOTAL DEPTH: 3292 FT  
DEPTH OF SELECTIVE ZONE: FT  
PACKER DEPTH: 3282 FT SIZE: 6 5/8 IN PACKER DEPTH: 3287 FT SIZE: 6 5/8 IN  
PACKER DEPTH: FT SIZE: IN PACKER DEPTH: FT SIZE: IN

DRILLING CONTRACTOR: RAINS & WILLIAMSON  
MUD TYPE: STARCH VISCOSITY: 41  
WEIGHT: 9.8 WATER LOSS (CC): 13.6  
CHLORIDES (P.P.M.): 56000

JARS - MAKE: SERIAL NUMBER:  
DID WELL FLOW? REVERSED OUT?  
DRILL COLLAR LENGTH: 60 FT I.D.: 2.25 IN  
WEIGHT PIPE LENGTH: FT I.D.: IN  
DRILL PIPE LENGTH: 3202 FT I.D.: 3.8 IN  
TEST TOOL LENGTH: 25 FT TOOL SIZE: 5 1/2 OD IN  
ANCHOR LENGTH: 5 FT SIZE: 5 1/2 OD IN  
SURFACE CHOKE SIZE: 3/4 IN BOTTOM CHOKE SIZE: 3/4 IN  
MAIN HOLE SIZE: 7 7/8 IN TOOL JOINT SIZE: 4 1/2 XH IN

BLOW: INITIAL FLOW PERIOD WEAK BLOW SLOWLY BUILDING  
TO A STRONG BLOW. OFF BOTTOM OF BUCKET IN 20  
MINS. FINAL FLOW PERIOD FAIR BLOW BUILDING TO A  
GOOD BLOW. HOSE 8" INTO BUCKET.

RECOVERED: 402 FT OF: SALT WATER. CHLORIDES 15000 PPM.  
RECOVERED: FT OF:  
RECOVERED: FT OF:  
RECOVERED: FT OF:  
RECOVERED: FT OF:  
RECOVERED: FT OF:  
RECOVERED: FT OF:  
RECOVERED: FT OF:  
RECOVERED: FT OF:  
RECOVERED: FT OF:

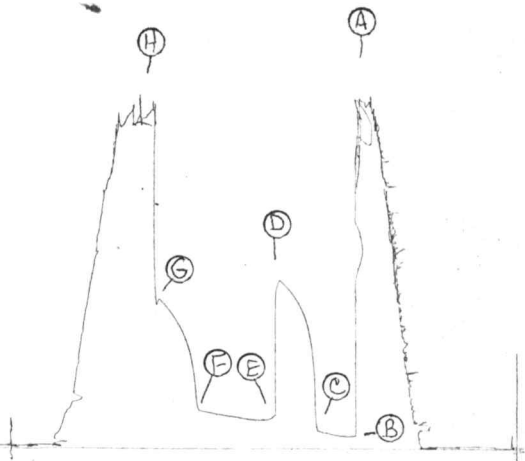
REMARKS:

TIME SET PACKER(S): 6:25 AM TIME STARTED OFF BOTTOM: 8:55 AM  
WELL TEMPERATURE: 0 °F  
INITIAL HYDROSTATIC PRESSURE: (A) 1726 PSI  
INITIAL FLOW PERIOD MIN: 30 (B) 61 PSI TO (C) 87 PSI  
INITIAL CLOSED IN PERIOD MIN: 27 (D) 832 PSI  
FINAL FLOW PERIOD MIN: 55 (E) 139 PSI TO (F) 184 PSI  
FINAL CLOSED IN PERIOD MIN: 30 (G) 736 PSI  
FINAL HYDROSTATIC PRESSURE (H) 1687 PSI



Ybr. #10450  
I

DST#4  
13762



Y.R.F. #10450  
0

DST#4  
13759

