

15-009-24740

12-19s-11w

DIAMOND TESTING

ORIGINAL

RECEIVED

P.O. Box 157  
HOISINGTON, KANSAS 67544  
(620) 653-7550 • (800) 542-7313

SEP 17 2002

KCC WICHITA

Company E & V Oil Co., Inc. Lease & Well No. Hoffman No. 1

Elevation 1981 KB Formation Lansing/Kansas City Effective Pay      Ft. Ticket No. J1272

Date 7-29-02 Sec. 12 Twp. 19S Range 11W County Barton State Kansas

Test Approved By Jim Musgrove Diamond Representative John C. Riedl

Formation Test No. 1 Interval Tested from 3,016 ft. to 3,114 ft. Total Depth 3,114 ft.

Packer Depth 3,011 ft. Size 6 3/4 in. Packer Depth      ft. Size      in.

Packer Depth 3,016 ft. Size 6 3/4 in. Packer Depth      ft. Size      in.

Depth of Selective Zone Set      ft.

Top Recorder Depth (Inside) 3,106 ft. Recorder Number 13498 Cap. 3,925 psi

Bottom Recorder Depth (Outside) 3,111 ft. Recorder Number 13556 Cap. 5,475 psi

Below Straddle Recorder Depth      ft. Recorder Number      Cap.      psi

Drilling Contractor Discovery Drilling - Rig 2 Drill Collar Length      ft. I.D.      in.

Mud Type Chemical Viscosity 40 Weight Pipe Length      ft. I.D.      in.

Weight 9.3 Water Loss 8.0 cc. Drill Pipe Length 2,996 ft. I.D. 3 1/2 in.

Chlorides 6,000 P.P.M. Test Tool Length 20 ft. Tool Size 3 1/2 - IF in.

Jars: Make Bowen Serial Number Not Run Anchor Length 98 ft. Size 4 1/2 - FH in.

Did Well Flow? No Reversed Out No Surface Choke Size 1 in. Bottom Choke Size 5/8 in.

Main Hole Size 7/8 in. Tool Joint Size 4 1/2 - XH in.

Blow: 1st Open: Strong blow. Off bottom of bucket in 18 mins. No blow back during shut-in.

2nd Open: Strong blow. Off bottom of bucket in 13 mins. No blow back during shut-in.

Recovered 370 ft. of gas in pipe

Recovered 40 ft. of slightly gas cut mud = .296000 bbls. (Grind out: 5%-gas; 95%-mud)

Recovered 40 ft. of TOTAL FLUID = .296000 bbls.

Recovered      ft. of

Recovered      ft. of

Remarks

Time Set Packer(s) 7:50 ~~XXXX~~ P.M. Time Started Off Bottom 10:20 ~~XXXX~~ P.M. Maximum Temperature 102 °

Initial Hydrostatic Pressure (A) 1502 P.S.I.

Initial Flow Period Minutes 30 (B) 68 P.S.I. to (C) 68 P.S.I.

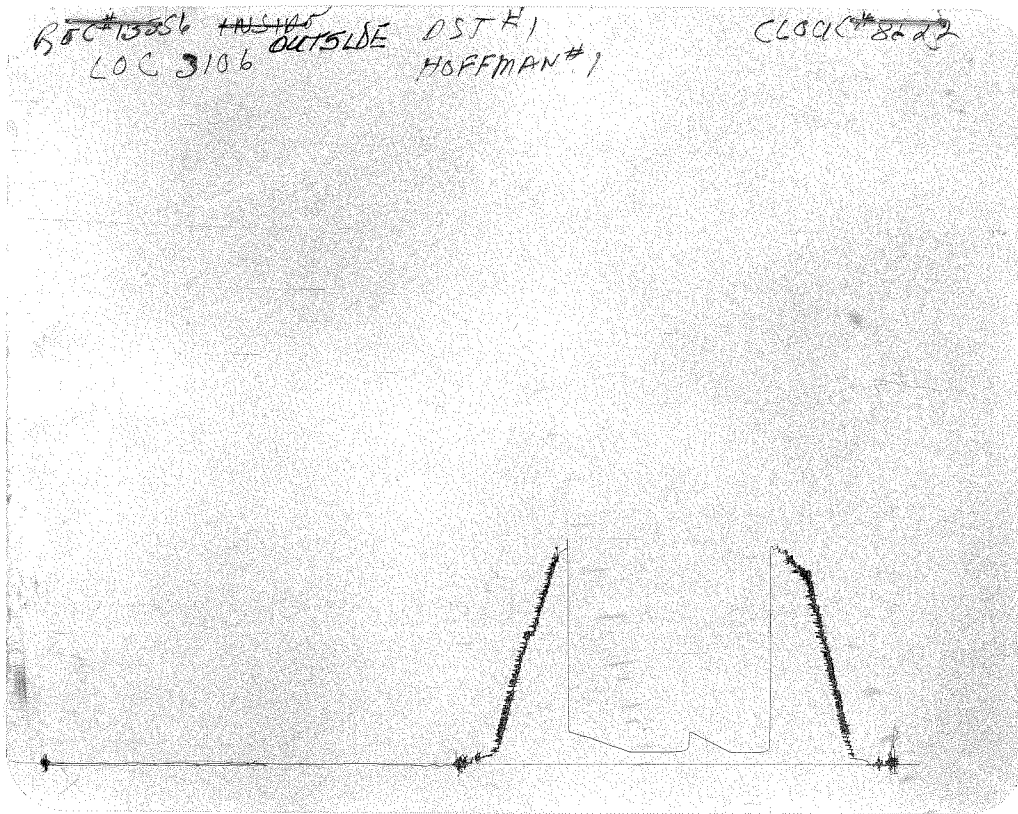
Initial Closed In Period Minutes 30 (D) 205 P.S.I.

Final Flow Period Minutes 45 (E) 81 P.S.I. to (F) 83 P.S.I.

Final Closed In Period Minutes 45 (G) 203 P.S.I.

Final Hydrostatic Pressure (H) 1486 P.S.I.

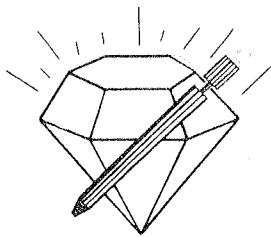
ORIGINAL



This is an actual photograph of recorder chart.

RECEIVED  
SEP 17 2002  
KCC WICHITA

POINT	PRESSURE		
	Field Reading	Office Reading	
(A) Initial Hydrostatic Mud .....	1502	1506	PSI
(B) First Initial Flow Pressure.....	68	78	PSI
(C) First Final Flow Pressure .....	68	78	PSI
(D) Initial Closed-in Pressure .....	205	209	PSI
(E) Second Initial Flow Pressure .....	81	81	PSI
(F) Second Final Flow Pressure.....	83	83	PSI
(G) Final Closed-in Pressure.....	203	204	PSI
(H) Final Hydrostatic Mud .....	1486	1487	PSI



**DIAMOND TESTING**  
 P.O. Box 157  
 HOISINGTON, KANSAS 67544  
 (620) 653-7550 • (800) 542-7313

**ORIGINAL**  
**RECEIVED**  
**SEP 17 2002**  
**KCC WICHITA**

Company E & V Oil Co., Inc. Lease & Well No. Hoffman No. 1  
 Elevation 1981 KB Formation Conglomerate Sand Effective Pay      Ft. Ticket No. J1273  
 Date 7-30-02 Sec. 12 Twp. 19S Range 11W County Barton State Kansas  
 Test Approved By Jim Musgrove Diamond Representative John C. Riedl  
 Formation Test No. 2 Interval Tested from 3,288ft. to 3,346 ft. Total Depth 3,346 ft.  
 Packer Depth 3,283ft. Size 6 3/4 in. Packer Depth      ft. Size      in.  
 Packer Depth 3,288ft. Size 6 3/4 in. Packer Depth      ft. Size      in.  
 Depth of Selective Zone Set      ft.  
 Top Recorder Depth (Inside) 3,338 ft. Recorder Number 13498 Cap. 3,925 psi  
 Bottom Recorder Depth (Outside) 3,343 ft. Recorder Number 13556 Cap. 5,475 psi  
 Below Straddle Recorder Depth      ft. Recorder Number      Cap.      psi  
 Drilling Contractor Discovery Drilling - Rig 2 Drill Collar Length      ft. I.D.      in.  
 Mud Type Chemical Viscosity 45 Weight Pipe Length      ft. I.D.      in.  
 Weight 9.3 Water Loss 8.0 cc. Drill Pipe Length 3,268 ft. I.D. 3 1/2 in.  
 Chlorides 7,000 P.P.M. Test Tool Length 20 ft. Tool Size 3 1/2 - IF in.  
 Jars: Make Bowen Serial Number Not Run Anchor Length 58 ft. Size 4 1/2 - FH in.  
 Did Well Flow? No Reversed Out No Surface Choke Size 1 in. Bottom Choke Size 5/8 in.  
 Main Hole Size 7 7/8 in. Tool Joint Size 4 1/2 - XH in.

Blow: 1st Open: Weak blow. Dead in 8 mins.  
 2nd Open: No blow. Flushed tool & received a weak surge.

Recovered 15 ft. of drilling mud = .111000 bbls.  
 Recovered      ft. of       
 Recovered      ft. of       
 Recovered      ft. of       
 Recovered      ft. of     

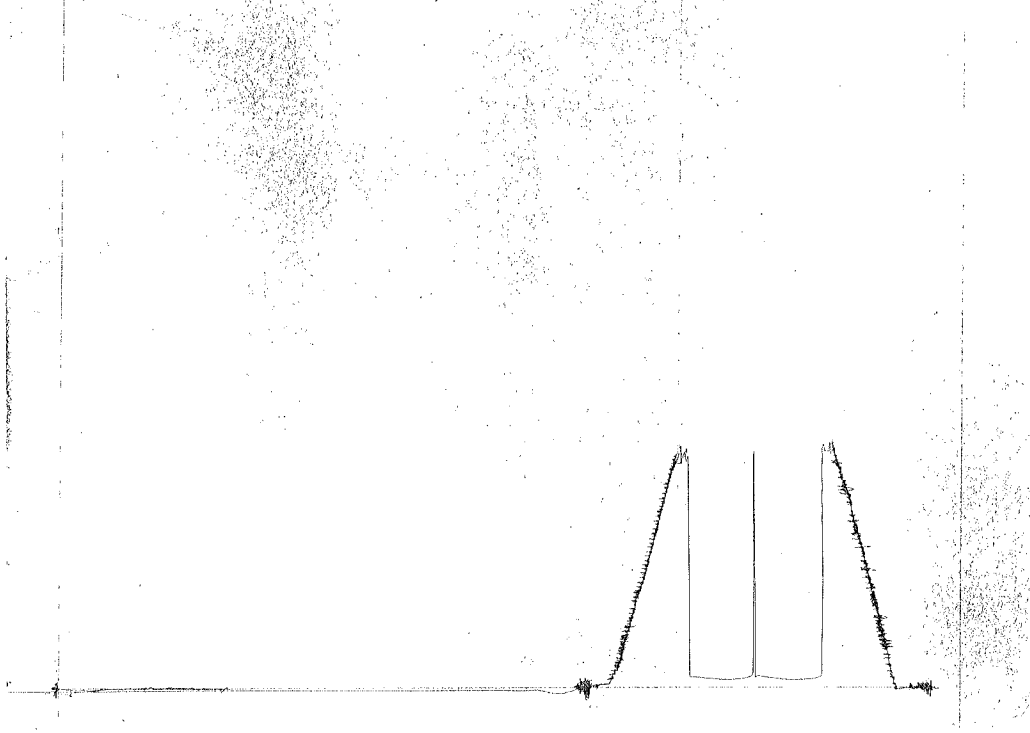
Remarks     

Time Set Packer(s) 10:00 ~~XXX~~ P.M. Time Started Off Bottom 11:40 ~~XXX~~ P.M. Maximum Temperature 104°  
 Initial Hydrostatic Pressure ..... (A) 1639 P.S.I.  
 Initial Flow Period ..... Minutes 20 (B) 55 P.S.I. to (C) 57 P.S.I.  
 Initial Closed In Period ..... Minutes 30 (D) 68 P.S.I.  
 Final Flow Period ..... Minutes 20 (E) 59 P.S.I. to (F) 60 P.S.I.  
 Final Closed In Period ..... Minutes 30 (G) 63 P.S.I.  
 Final Hydrostatic Pressure ..... (H) 1610 P.S.I.

REF 13586 90510  
LOC 3341

DST # 2  
LOFFMAN (E)

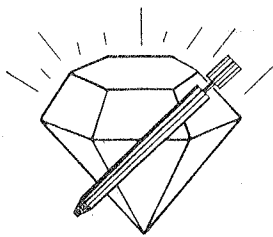
CLOCK 08687



This is an actual photograph of recorder chart.

POINT	PRESSURE		
	Field Reading	Office Reading	
(A) Initial Hydrostatic Mud .....	1639	1634	PSI
(B) First Initial Flow Pressure .....	55	53	PSI
(C) First Final Flow Pressure .....	57	56	PSI
(D) Initial Closed-in Pressure .....	68	70	PSI
(E) Second Initial Flow Pressure .....	59	59	PSI
(F) Second Final Flow Pressure .....	60	62	PSI
(G) Final Closed-in Pressure .....	63	65	PSI
(H) Final Hydrostatic Mud .....	1610	1603	PSI

RECEIVED  
SEP 17 2002  
KCC WICHITA



**DIAMOND TESTING**  
 P.O. Box 157  
 HOISINGTON, KANSAS 67544  
 (620) 653-7550 • (800) 542-7313

**ORIGINAL RECEIVED**

SEP 17 2002

KCC WICHITA

Company E & V Oil Co., Inc. Lease & Well No. Hoffman No. 1  
 Elevation 1981 KB Formation Arbuckle Effective Pay      Ft. Ticket No. J1274  
 Date 7-31-02 Sec. 12 Twp. 19S Range 11W County Barton State Kansas  
 Test Approved By Jim Musgrove Diamond Representative John C. Riedl

Formation Test No. 3 Interval Tested from 3,289 ft. to 3,360 ft. Total Depth 3,360 ft.  
 Packer Depth 3,284 ft. Size 6 3/4 in. Packer Depth      ft. Size      in.  
 Packer Depth 3,289 ft. Size 6 3/4 in. Packer Depth      ft. Size      in.  
 Depth of Selective Zone Set      ft.

Top Recorder Depth (Inside) 3,352 ft. Recorder Number 13498 Cap. 3,925 psi  
 Bottom Recorder Depth (Outside) 3,357 ft. Recorder Number 13556 Cap. 5,475 psi  
 Below Straddle Recorder Depth      ft. Recorder Number      Cap.      psi

Drilling Contractor Discovery Drilling - Rig 2 Drill Collar Length      ft. I.D.      in.  
 Mud Type Chemical Viscosity 42 Weight Pipe Length      ft. I.D.      in.  
 Weight 9.4 Water Loss 8.0 cc. Drill Pipe Length 3,269 ft. I.D. 3 1/2 in.  
 Chlorides 7,000 P.P.M. Test Tool Length 20 ft. Tool Size 3 1/2 - IF in.  
 Jars: Make Bowen Serial Number Not Run Anchor Length 71 ft. Size 4 1/2 - FH in.  
 Did Well Flow? No Reversed Out No Surface Choke Size 1 in. Bottom Choke Size 5/8 in.  
 Main Hole Size 7 7/8 in. Tool Joint Size 4 1/2 - XH in.

Blow: 1st Open: Weak, 3/4 in., blow decreasing to 1/2 in. by end.  
2nd Open: Surface blow. Dead in 3 mins. Flushed tool & received a weak surge.

Recovered 20 ft. of very slightly oil cut mud = .148000 bbls. (Grind out: less than 1%-oil; 99%-mud)  
 Recovered      ft. of       
 Recovered      ft. of       
 Recovered      ft. of       
 Recovered      ft. of     

Remarks     

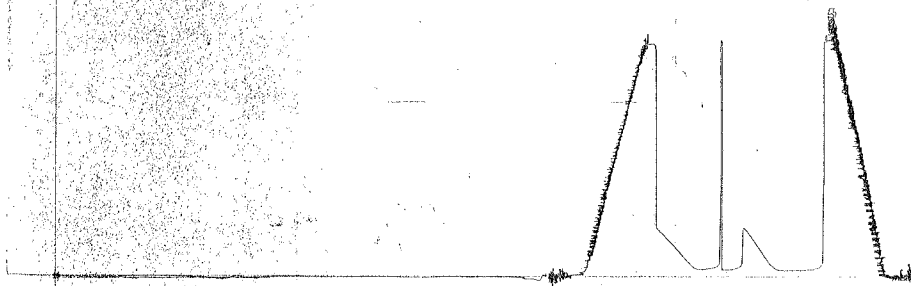
Time Set Packer(s) 9:45 <sup>A.M.</sup>/<sub>P.M.</sub> Time Started Off Bottom 11:45 <sup>A.M.</sup>/<sub>P.M.</sub> Maximum Temperature 104°  
 Initial Hydrostatic Pressure      (A) 1639 P.S.I.  
 Initial Flow Period      Minutes 30 (B) 33 P.S.I. to (C) 35 P.S.I.  
 Initial Closed In Period      Minutes 30 (D) 342 P.S.I.  
 Final Flow Period      Minutes 30 (E) 40 P.S.I. to (F) 49 P.S.I.  
 Final Closed In Period      Minutes 30 (G) 348 P.S.I.  
 Final Hydrostatic Pressure      (H) 1613 P.S.I.

ORIGINAL

Well #13256 OUTSIDE  
RCC 3357

WST #3  
HUFFMAN #1

Close #26902



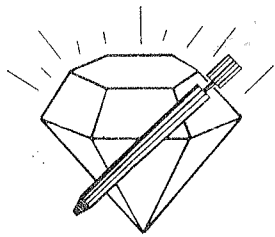
This is an actual photograph of recorder chart.

RECEIVED

SEP 17 2002

KCC WICHITA

POINT	PRESSURE		
	Field Reading	Office Reading	
(A) Initial Hydrostatic Mud .....	1639	1642	PSI
(B) First Initial Flow Pressure .....	33	38	PSI
(C) First Final Flow Pressure .....	35	40	PSI
(D) Initial Closed-in Pressure .....	342	341	PSI
(E) Second Initial Flow Pressure .....	40	42	PSI
(F) Second Final Flow Pressure .....	49	48	PSI
(G) Final Closed-in Pressure .....	348	347	PSI
(H) Final Hydrostatic Mud .....	1613	1620	PSI



**DIAMOND TESTING**  
P.O. Box 157  
HOISINGTON, KANSAS 67544  
(620) 653-7550 • (800) 542-7313

ORIGINAL  
RECEIVED  
SEP 17 2002  
KCC WICHITA

Company E & V Oil Co., Inc. Lease & Well No. Hoffman No. 1

Elevation 1981 KB Formation Arbuckle Effective Pay      Ft. Ticket No. J1275

Date 7-31-02 Sec. 12 Twp. 19S Range 11W County Barton State Kansas

Test Approved By Jim Musgrove Diamond Representative John C. Riedl

Formation Test No. 4 Interval Tested from 3,289 ft. to 3,372 ft. Total Depth 3,372 ft.

Packer Depth 3,284 ft. Size 6 3/4 in. Packer Depth      ft. Size      in.

Packer Depth 3,289 ft. Size 6 3/4 in. Packer Depth      ft. Size      in.

Depth of Selective Zone Set      ft.

Top Recorder Depth (Inside) 3,364 ft. Recorder Number 13498 Cap. 3,925 psi

Bottom Recorder Depth (Outside) 3,369 ft. Recorder Number 13556 Cap. 5,475 psi

Below Straddle Recorder Depth      ft. Recorder Number      Cap.      psi

Drilling Contractor Discovery Drilling - Rig 2 Drill Collar Length      ft. I.D.      in.

Mud Type Chemical Viscosity 43 Weight Pipe Length      ft. I.D.      in.

Weight 9.4 Water Loss 7.0 cc. Drill Pipe Length 3,269 ft. I.D. 3 1/2 in.

Chlorides 7,000 P.P.M. Test Tool Length 20 ft. Tool Size 3 1/2 - IF in.

Jars: Make Bowen Serial Number Not Run Anchor Length 83 ft. Size 4 1/2 - FH in.

Did Well Flow? No Reversed Out No Surface Choke Size 1 in. Bottom Choke Size 5/8 in.

Main Hole Size 7 7/8 in. Tool Joint Size 4 1/2 - XH in.

Blow: 1st Open: Weak, steady, 3/4 in., blow.  
2nd Open: Weak, 1/2 in., blow decreasing to a surface blow by end.

Recovered 10 ft. of free oil = .074000 bbls. (Gravity: 34 @ 60°)

Recovered 30 ft. of oil cut mud = .222000 bbls. (Grind out: 5%-oil; 95%-mud)

Recovered 40 ft. of TOTAL FLUID = .296000 bbls.

Recovered      ft. of     

Recovered      ft. of     

Remarks     

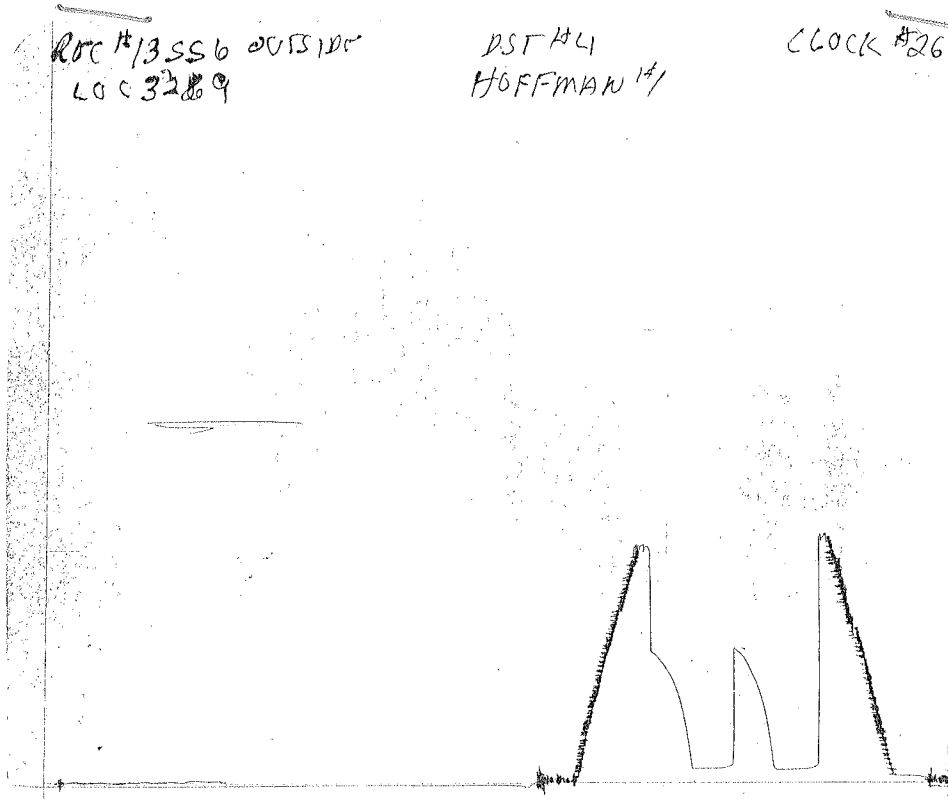
Time Set Packer(s)	<u>8:30</u> <del>XXXX</del> P.M.	Time Started Off Bottom	<u>10:30</u> <del>XXM.</del> P.M.	Maximum Temperature	<u>105°</u>
Initial Hydrostatic Pressure	(A)	<u>1707</u>	P.S.I.		
Initial Flow Period	Minutes <u>30</u>	(B)	<u>81</u>	P.S.I. to (C)	<u>87</u> P.S.I.
Initial Closed In Period	Minutes <u>30</u>	(D)	<u>929</u>	P.S.I.	
Final Flow Period	Minutes <u>30</u>	(E)	<u>87</u>	P.S.I. to (F)	<u>93</u> P.S.I.
Final Closed In Period	Minutes <u>30</u>	(G)	<u>915</u>	P.S.I.	
Final Hydrostatic Pressure	(H)	<u>1670</u>	P.S.I.		

ORIGINAL

ROC #13556 outside  
LOC 3289

DST #4  
HOFFMAN #1

CLOCK #26702



This is an actual photograph of recorder chart.

POINT	PRESSURE		
	Field Reading	Office Reading	
(A) Initial Hydrostatic Mud .....	1707	1666	PSI
(B) First Initial Flow Pressure.....	81	82	PSI
(C) First Final Flow Pressure .....	87	87	PSI
(D) Initial Closed-in Pressure .....	929	934	PSI
(E) Second Initial Flow Pressure .....	87	87	PSI
(F) Second Final Flow Pressure.....	93	95	PSI
(G) Final Closed-in Pressure.....	915	915	PSI
(H) Final Hydrostatic Mud.....	1670	1640	PSI

RECEIVED  
 SEP 17 2000  
 KCC WICHITA