

15-009-25248

17-19s-12w

KGS

DIAMOND TESTING

P.O. Box 157

HOISINGTON, KANSAS 67544

(620) 653-7550 • (800) 542-7313

Company L. D. Drilling, Inc. Lease & Well No. Ron Unit No. 1-17
 Elevation 1881 KB Formation Topeka Effective Pay -- Ft. Ticket No. 2529
 Date 12-5-08 Sec. 17 Twp. 19S Range 12W County Barton State Kansas

Test Approved By Kim B. Shoemaker Diamond Representative Roger D. Friedly

Formation Test No. 1 Interval Tested from 2,989 ft. to 3,085 ft. Total Depth 3,085 ft.

Packer Depth 2,984 ft. Size 6 3/4 in. Packer Depth -- ft. Size -- in.

Packer Depth 2,989 ft. Size 6 3/4 in. Packer Depth -- ft. Size -- in.

Depth of Selective Zone Set ft.

Top Recorder Depth (Inside) 2,977 ft. Recorder Number 1150 Cap. 5,000 psi

Bottom Recorder Depth (Outside) 3,082 ft. Recorder Number 3815 Cap. 5,700 psi

Below Straddle Recorder Depth ft. Recorder Number Cap. psi

Drilling Contractor Petromark Drilling, LLC - Rig 2 Drill Collar Length 123 ft. I.D. 2 1/4 in.

Mud Type Chemical Viscosity 44 Weight Pipe Length -- ft. I.D. -- in.

Weight 9.3 Water Loss 11.2 cc. Drill Pipe Length 2,840 ft. I.D. 3 1/2 in.

Chlorides 10,000 P.P.M. Test Tool Length 26 ft. Tool Size 3 1/2 - IF in.

Jars: Make Sterling Serial Number Not Run Anchor Length 33' perf. w/63' drill pipe Size 4 1/2 - FH in.

Did Well Flow? No Reversed Out No Surface Choke Size 1 in. Bottom Choke Size 5/8 in.

Main Hole Size 7 7/8 in. Tool Joint Size 4 1/2 - XH in.

Blow: 1st Open: Weak, 1/2 in., blow increasing. Off bottom of bucket in 22 mins. Weak, 1/2 in., blow back during shut-in.

2nd Open: Weak, 1/2 in., blow increasing. Off bottom of bucket in 10 mins. Weak, 1/2 in., blow back building to 7 ins. in 60 mins. during shut-in.

Recovered 550 ft. of gas in pipe

Recovered 144 ft. of water & mud cut gassy oil = 1.471900 bbls. (Grind out: 12%-water; 22%-mud; 23%-gas; 43%-oil)

Recovered 61 ft. of slightly oil cut muddy water = .300120 bbls. (Grind out: 2%-oil; 3%-mud; 95%-water)

Recovered 205 ft. of TOTAL FLUID = 1.772020 bbls. Chlorides: 43,000 Ppm

Recovered ft. of

Remarks Tool Sample Grind Out: 2%-gas; 2%-oil; 96%-water

Time Set Packer(s) 10:33 ^{A.M.} ~~P.M.~~ Time Started Off Bottom 1:33 ^{XXM.} ~~P.M.~~ Maximum Temperature 95°

Initial Hydrostatic Pressure (A) 1424 P.S.I.

Initial Flow Period Minutes 30 (B) 11 P.S.I. to (C) 49 P.S.I.

Initial Closed In Period Minutes 45 (D) 1015 P.S.I.

Final Flow Period Minutes 45 (E) 62 P.S.I. to (F) 84 P.S.I.

Final Closed In Period Minutes 60 (G) 999 P.S.I.

Final Hydrostatic Pressure (H) 1411 P.S.I.

General Information Report

General Information

Company Name	L.D. DRILLING, INC.	Contact	L.D. DAVIS	Job Number	
Well Name			RON #1-17	Representative	ROGER D. FRIEDLY
Unique Well ID	DST #1 TOPEKA 2,989'-3,085'			Well Operator	L.D. DRILLING, INC.
Surface Location	SEC 17-19S-12W BARTON COUNTY			Report Date	2008/12/05
Well License Number				Prepared By	ROGER D. FRIEDLY
Field			WILDCAT		
Well Type			Vertical		

Test Information

Test Type	Drill Stem Test	Start Test Time	08:28:00
Formation	DST #1 TOPEKA	Final Test Time	15:13:00
Well Fluid Type	01 Oil		
Start Test Date	2008/12/05		
Final Test Date	2008/12/05		
Flow Duration			
Gauge Name	KUSTER #1150		
Gauge Serial Number			
Temperature at Run Depth			°C

Test Results

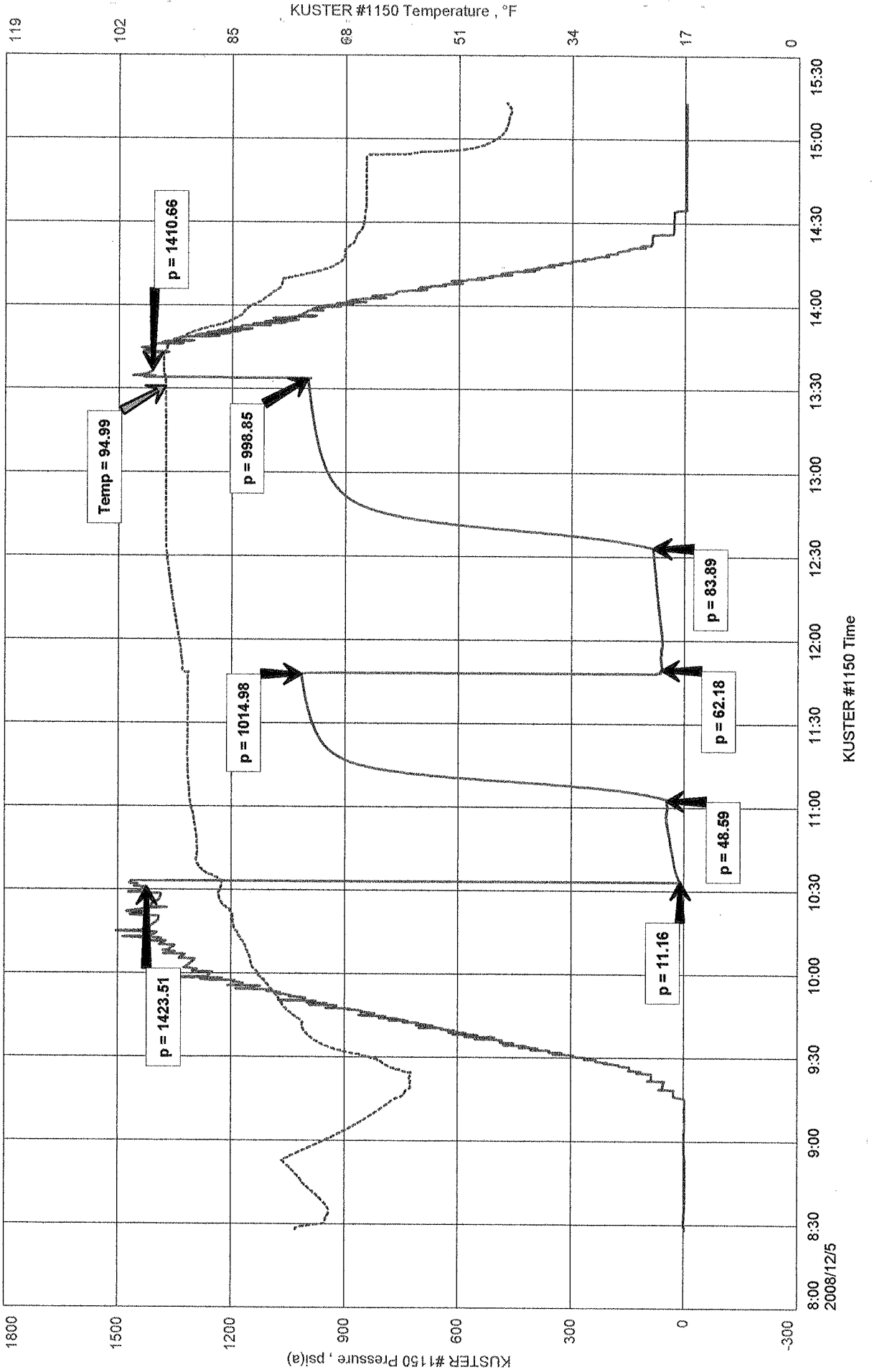
RECOVERED; 550' GAS IN PIPE
 144' W&MCGO 12% WTR, 22% MUD, 23% GAS, 43% OIL
 61' SLTOCMW 2% OIL, 3% MUD, 95% WTR CHLORIDES 43,000 Ppm
 205' TOTAL FLUID

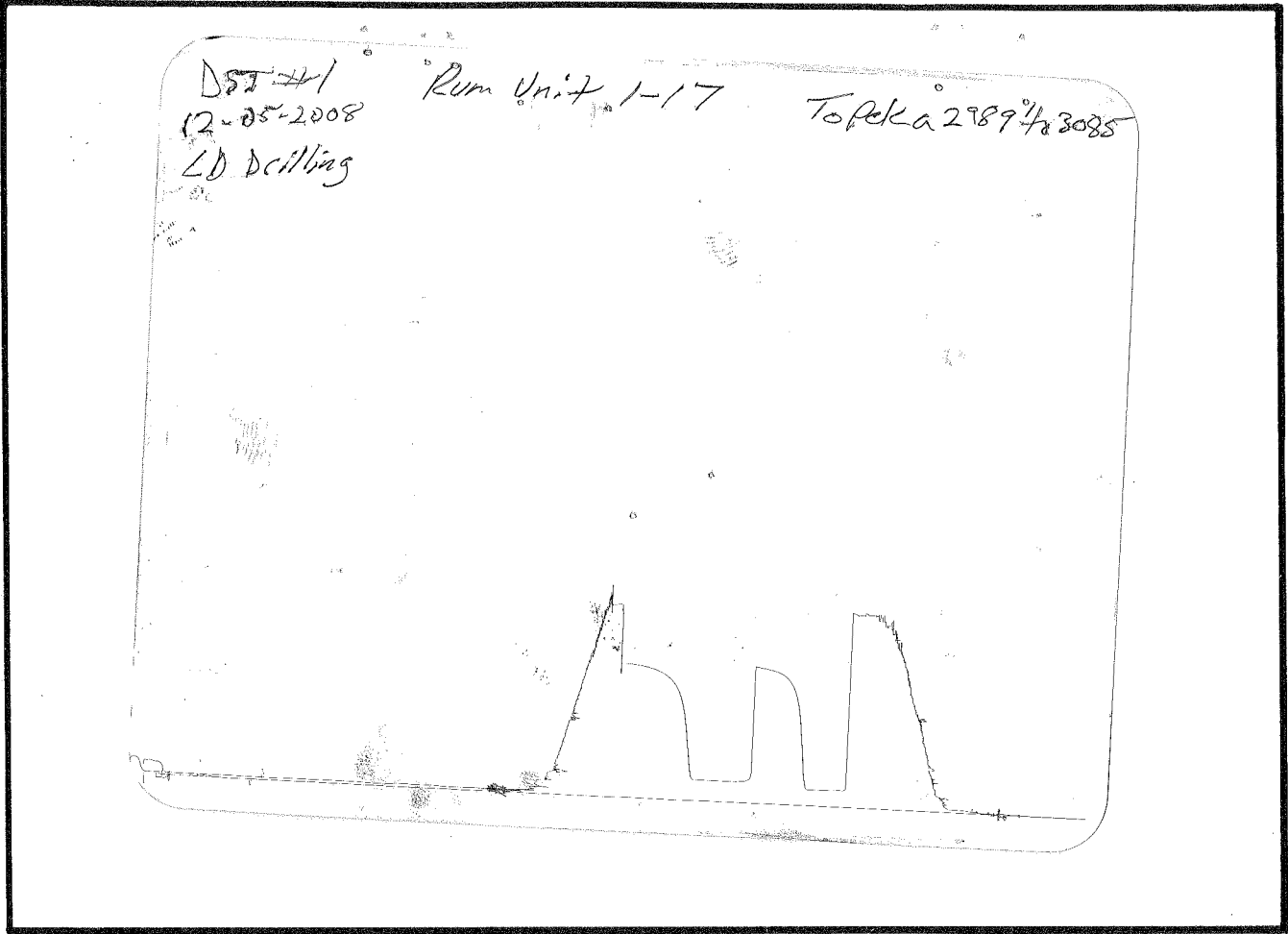
TOOL SAMPLE: 2% GAS, 2% OIL, 96% WTR

RON #1-17
Pool: WILDCAT

L.D. DRILLING, INC.
DST #1 TOPEKA 2,989' - 3,085'
Start Test Date: 2008/12/05
Final Test Date: 2008/12/05

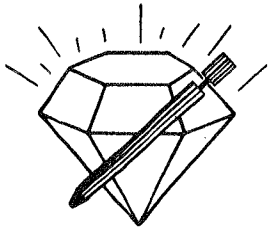
RON #1-17





This is an actual photograph of recorder chart.

POINT	PRESSURE		PSI
	Field Reading	Elec. Office Reading	
(A) Initial Hydrostatic Mud	1424	1424	PSI
(B) First Initial Flow Pressure	11	11	PSI
(C) First Final Flow Pressure	49	49	PSI
(D) Initial Closed-in Pressure	1015	1015	PSI
(E) Second Initial Flow Pressure	62	62	PSI
(F) Second Final Flow Pressure	84	84	PSI
(G) Final Closed-in Pressure	999	999	PSI
(H) Final Hydrostatic Mud	1411	1411	PSI



DIAMOND TESTING
P.O. Box 157
HOISINGTON, KANSAS 67544
(620) 653-7550 • (800) 542-7313

Company L. D. Drilling, Inc. Lease & Well No. Ron Unit No. 1-17
Elevation 1881 KB Formation Lansing/Kansas City "B"- "F" Effective Pay -- Ft. Ticket No. 2530
Date 12-6-08 Sec. 17 Twp. 19S Range 12W County Barton State Kansas
Test Approved By Kim B. Shoemaker Diamond Representative Roger D. Friedly

Formation Test No. 2 Interval Tested from 3,195 ft. to 3,250 ft. Total Depth 3,250 ft.
Packer Depth 3,190 ft. Size 6 3/4 in. Packer Depth -- ft. Size -- in.
Packer Depth 3,195 ft. Size 6 3/4 in. Packer Depth -- ft. Size -- in.
Depth of Selective Zone Set ft.

Top Recorder Depth (Inside) 3,183 ft. Recorder Number 1150 Cap. 5,000 psi
Bottom Recorder Depth (Outside) 3,247 ft. Recorder Number 3815 Cap. 5,700 psi
Below Straddle Recorder Depth ft. Recorder Number Cap. psi

Drilling Contractor Petromark Drilling, LLC - Rig 2 Drill Collar Length 123 ft. I.D. 2 1/4 in.
Mud Type Chemical Viscosity 44 Weight Pipe Length -- ft. I.D. -- in.
Weight 9.3 Water Loss 11.2 cc. Drill Pipe Length 3,046 ft. I.D. 3 1/2 in.
Chlorides 10,000 P.P.M. Test Tool Length 26 ft. Tool Size 3 1/2 - IF in.
Jars: Make Sterling Serial Number Not Run Anchor Length 22' perf. w/33' drill pipe Size 4 1/2 - FH in.
Did Well Flow? No Reversed Out No Surface Choke Size 1 in. Bottom Choke Size 5/8 in.
Main Hole Size 7/8 in. Tool Joint Size 4 1/2 - XH in.

Blow: 1st Open: Weak, 1/2 in., blow. Off bottom of bucket in 1 min. Weak, 1/2 in., blow back during shut-in.
2nd Open: Weak, 1/2 in., blow. Off bottom of bucket in 3 mins. Strong blow back off bottom of bucket during shut-in.

Recovered 1,500 ft. of gas in pipe
Recovered 77 ft. of oil & gas cut watery mud = 1.095710 bbls. (Grind out: 1%-oil; 2%-gas; 2%-water; 95%-mud)
Recovered 434 ft. of gas & mud cut watery oil = 6.175820 bbls. (Grind out: 10%-gas; 20%-mud; 27%-water; 43%-oil)
Recovered 186 ft. of mud & gas cut watery oil = 2.646780 bbls. (Grind out: 11%-mud; 16%-gas; 34%-water; 39%-oil)
Recovered 495 ft. of slightly oil cut water = 5.898720 bbls. (Grind out: 1%-oil; 99%-water) Chlorides: 38,000 Ppm
Recovered 1,192 ft. of TOTAL FLUID = 15.817030 bbls.
Remarks Tool Sample Grind Out: 3%-oil; 97%-water

Time Set Packer(s) 4:00 A.M. Time Started Off Bottom 7:00 A.M. Maximum Temperature 109°
Initial Hydrostatic Pressure (A) 1534 P.S.I.
Initial Flow Period Minutes 30 (B) 157 P.S.I. to (C) 375 P.S.I.
Initial Closed In Period Minutes 45 (D) 712 P.S.I.
Final Flow Period Minutes 45 (E) 396 P.S.I. to (F) 542 P.S.I.
Final Closed In Period Minutes 60 (G) 713 P.S.I.
Final Hydrostatic Pressure (H) 1500 P.S.I.

General Information Report**General Information**

Company Name	L.D. DRILLING, INC.		
Contact		L.D. DAVIS	
Well Name		RON #1-17	
Unique Well ID	DST #2 LKC 'B-F' 3,195' - 3,250'		Job Number
Surface Location	SEC 17-19S-12W BARTON COUNTY		Representative
Well License Number			Well Operator
Field			Report Date
Well Type		WILDCAT	Prepared By
		Vertical	

Test Information

Test Type	Drill Stem Test	Start Test Time	02:05:00
Formation	DST #2 LKC'B-F' 3,195' - 3,250'	Final Test Time	10:07:00
Well Fluid Type	01 Oil		
Start Test Date	2008/12/06		
Final Test Date	2008/12/06		
Flow Duration			
Gauge Name	KUSTER #1150		
Gauge Serial Number			
Temperature at Run Depth			°C

Test Results

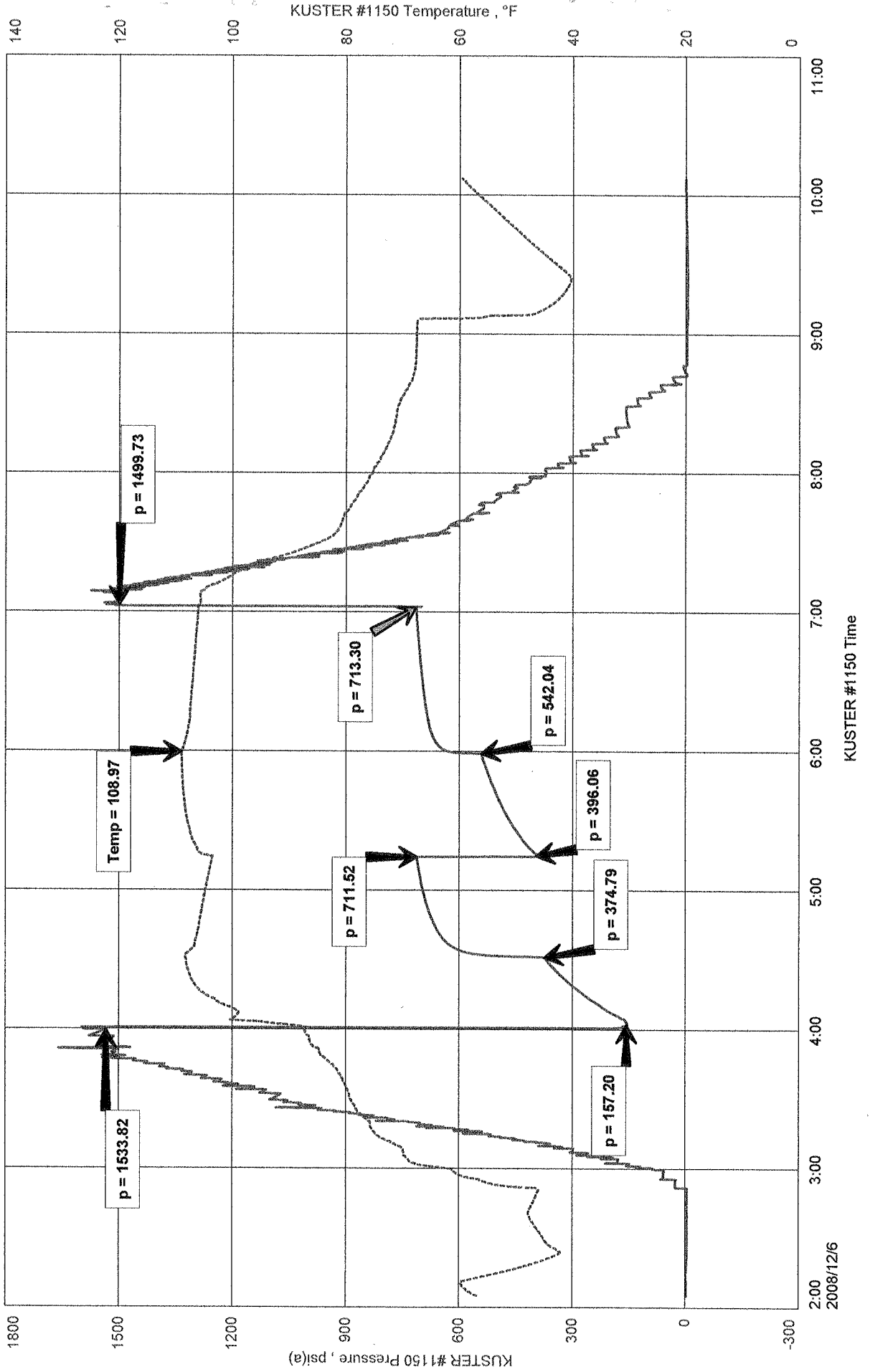
RECOVERED: 1,500' GAS IN PIPE
 77' O&GCWM 1% OIL, 2% GAS, 2% WTR, 95% MUD
 434' G&MCW0 10% GAS, 20% MUD, 27% WTR, 43% OIL
 186' M&GCWO 11% MUD, 16% GAS, 34% WTR, 39% OIL
 495' SLTOCW 1% OIL, 99% WTR CHLORIDES 38,000 Ppm
 1,192' TOTAL FLUID

TOOL SAMPLE: 3% OIL, 97% WTR

RON #1-17
 Formation: DST #2 LKC'B-F' 3,195' - 3,250'
 Pool: WILDCAT

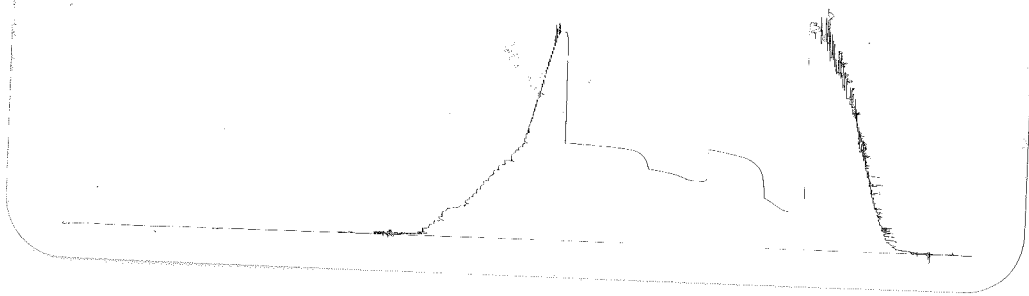
L.D. DRILLING, INC.
 DST #2 LKC 'B-F' 3,195' - 3,250'
 Start Test Date: 2008/12/06
 Final Test Date: 2008/12/06

RON #1-17



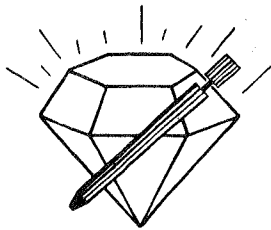
DST #2
 12-06-2008
 LD Davis Drilling

Rem Unit 1-17
 LIK BIF
 3195 to 3250



This is an actual photograph of recorder chart.

POINT	PRESSURE		Elec. Office Reading	PSI
	Field Reading			
(A) Initial Hydrostatic Mud	1534		1534	PSI
(B) First Initial Flow Pressure	157		157	PSI
(C) First Final Flow Pressure	375		375	PSI
(D) Initial Closed-in Pressure	712		712	PSI
(E) Second Initial Flow Pressure	396		396	PSI
(F) Second Final Flow Pressure	542		542	PSI
(G) Final Closed-in Pressure	713		713	PSI
(H) Final Hydrostatic Mud	1500		1500	PSI



DIAMOND TESTING
P.O. Box 157
HOISINGTON, KANSAS 67544
(620) 653-7550 • (800) 542-7313

Company L. D. Drilling, Inc. Lease & Well No. Ron Unit No. 1-17

Elevation 1881 KB Formation Lansing/Kansas City "H"-"J" Effective Pay -- Ft. Ticket No. 2531

Date 12-6-08 Sec. 17 Twp. 19S Range 12W County Barton State Kansas

Test Approved By Kim B. Shoemaker Diamond Representative Roger D. Friedly

Formation Test No. 3 Interval Tested from 3,302 ft. to 3,364 ft. Total Depth 3,364 ft.

Packer Depth 3,297 ft. Size 6 3/4 in. Packer Depth -- ft. Size -- in.

Packer Depth 3,302 ft. Size 6 3/4 in. Packer Depth -- ft. Size -- in.

Depth of Selective Zone Set ft.

Top Recorder Depth (Inside) 3,290 ft. Recorder Number 1150 Cap. 5,000 psi

Bottom Recorder Depth (Outside) 3,361 ft. Recorder Number 3815 Cap. 5,700 psi

Below Straddle Recorder Depth ft. Recorder Number Cap. psi

Drilling Contractor Petromark Drilling, LLC - Rig 2 Drill Collar Length 123 ft. I.D. 2 1/4 in.

Mud Type Chemical Viscosity 50 Weight Pipe Length -- ft. I.D. -- in.

Weight 9.4 Water Loss 11.2 cc. Drill Pipe Length 3,153 ft. I.D. 3 1/2 in.

Chlorides 11,000 P.P.M. Test Tool Length 26 ft. Tool Size 3 1/2 - IF in.

Jars: Make Sterling Serial Number Not Run Anchor Length 29' perf. w/33' drill pipe Size 4 1/2 - FH in.

Did Well Flow? No Reversed Out No Surface Choke Size 1 in. Bottom Choke Size 5/8 in.

Main Hole Size 7 7/8 in. Tool Joint Size 4 1/2 - XH in.

Blow: 1st Open: Intermittent, weak, 1/4 in., blow building to 5 ins. in 30 mins. No blow back during shut-in.

2nd Open: Intermittent, weak, 1/4 in., blow building to 2 ins. in 45 mins. No blow back during shut-in.

Recovered 30 ft. of gas in pipe

Recovered 15 ft. of slightly oil cut mud = .213450 bbls. (Grind out: 1%-oil; 99%-mud)

Recovered 123 ft. of oil cut watery mud = .605160 bbls. (Grind out: 10%-oil; 36%-water; 54%-mud)

Recovered 138 ft. of TOTAL FLUID = .818610 bbls.

Recovered ft. of

Remarks Tool Sample Grind Out: 10%-oil; 32%-mud; 58%-water (Chlorides: 76,000 Ppm)

Time Set Packer(s) 9:10 ~~P.M.~~ ^{AXM.} Time Started Off Bottom 12:10 ~~P.M.~~ ^{A.M.} Maximum Temperature 95°

Initial Hydrostatic Pressure (A) 1550 P.S.I.

Initial Flow Period Minutes 30 (B) 10 P.S.I. to (C) 48 P.S.I.

Initial Closed In Period Minutes 45 (D) 234 P.S.I.

Final Flow Period Minutes 45 (E) 61 P.S.I. to (F) 70 P.S.I.

Final Closed In Period Minutes 60 (G) 166 P.S.I.

Final Hydrostatic Pressure (H) 1549 P.S.I.

General Information Report

General Information

Company Name	L.D. DRILLING, INC.	L.D. DAVIS	Job Number	
Contact		RON #1-17	Representative	ROGER D. FRIEDLY
Well Name		DST #3 LKC 'H-J' 3,302' - 3,364	Well Operator	L.D. DRILLING, INC.
Unique Well ID		SEC 17-19S-12W BARTON COUNTY	Report Date	2008/12/07
Surface Location			Prepared By	ROGER D. FRIEDLY
Well License Number				
Field		WILDCAT		
Well Type		Vertical		

Test Information

Test Type	Drill Stem Test	Start Test Time	19:52:00
Formation	DST #3 LKC 'H-J' 3,302' - 3,364'	Final Test Time	01:40:00
Well Fluid Type	01 Oil		
Start Test Date	2006/12/06		
Final Test Date	2006/12/07		
Flow Duration			
Gauge Name	KUSTE #1150		
Gauge Serial Number			
Temperature at Run Depth	°C		

Test Results

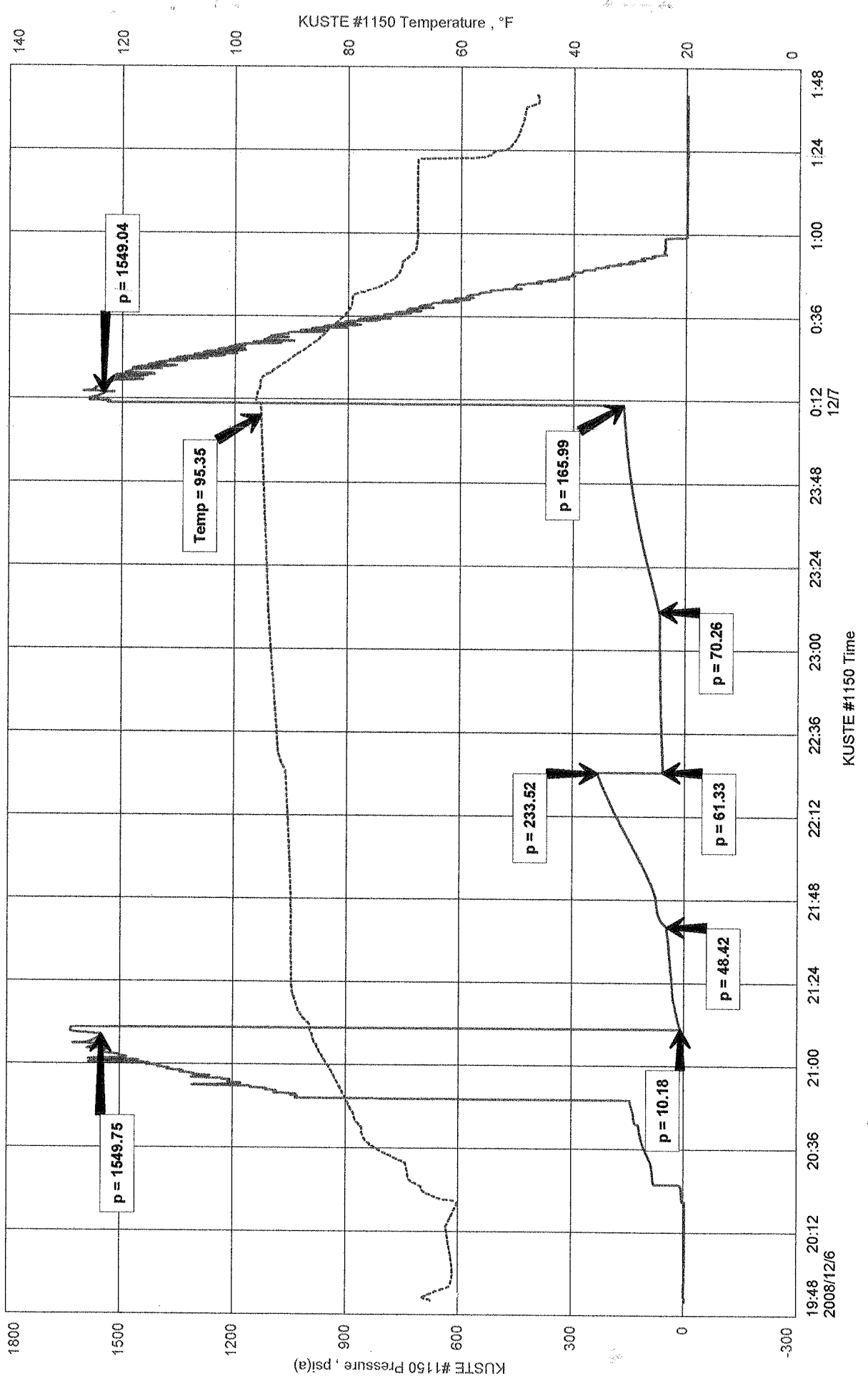
RECOVERED: 30' GAS IN PIPE
15' SLTOCM 1% OIL, 99% MUD
123' OCWM 10% OIL, 36% WTR, 54% MUD
138' TOTAL FLUID

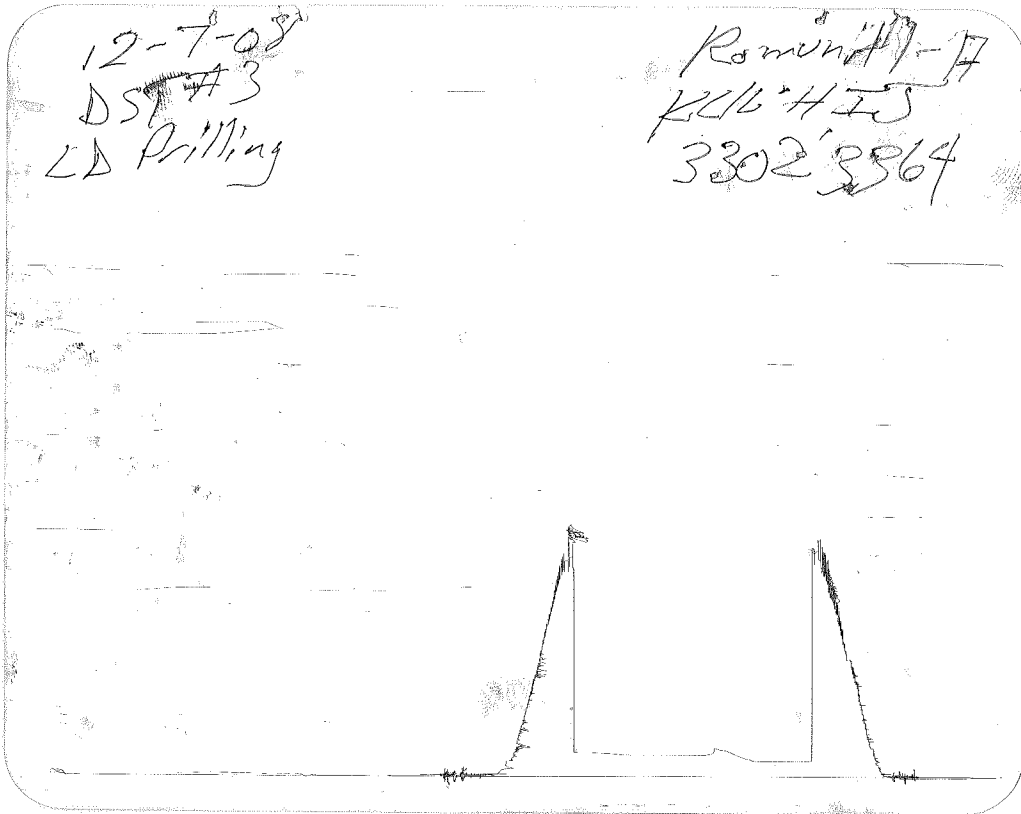
TOOL SAMPLE: 10% OIL, 32% MUD, 58% WTR CHLORIDES 76,000 Ppm

RON #1-17
 Formation: DST #3 LKC 'H-J' 3,302' - 3,364'
 Pool: WILDCAT

L.D. DRILLING, INC.
 DST #3 LKC 'H-J' 3,302' - 3,364'
 Start Test Date: 2006/12/06
 Final Test Date: 2006/12/07

RON #1-17





This is an actual photograph of recorder chart.

POINT	PRESSURE		Elec. Office Reading	PSI
	Field Reading			
(A) Initial Hydrostatic Mud	1550		1550	PSI
(B) First Initial Flow Pressure.....	10		10	PSI
(C) First Final Flow Pressure	48		48	PSI
(D) Initial Closed-in Pressure	234		234	PSI
(E) Second Initial Flow Pressure	61		61	PSI
(F) Second Final Flow Pressure.....	70		70	PSI
(G) Final Closed-in Pressure.....	166		166	PSI
(H) Final Hydrostatic Mud.....	1549		1549	PSI