

WELL LOG BUREAU - KANSAS GEOLOGICAL SOCIETY.  
 Union National Bk Bldg, Wichita, Kansas.,

*Plotted*

MORGAN & FLYNN CO.  
 Fred Amerine No. 1.

SEC. 14 T.19 R 14W  
 NE cor NE

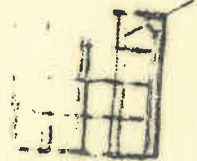
Total Depth. 3668'  
 Comm. 12-12-35 Comp. 3-12-36  
 Shot or Treated.  
 Contractor.  
 Issued. 4-4-36

County. Barton

54546

CASING.

20 "	69'
15 $\frac{1}{2}$ "	305'
12 $\frac{1}{2}$ "	819'
10 "	2257' UR 2605'
8 $\frac{1}{4}$ "	3305'
7 "	3625'



Elevation.

Production. Dry.

Figures Indicate Bottom of Formations.

soil	14	lime broken	2140
clay yellow	27	red shale	2145
water sand	57	lime	2175
mud brown	95	shale blue	2180
white sand 3BW	100	lime broken	2200
shale light	125	lime	2240
shale red	160	shale red	2265
shale blue	205	lime	2300
shale grey	220	lime broken	2310
shale blue	265	shale brown	2325
lime	270	lime broken	2370
shale blue	305	lime	2400
water sand	355	shale blue	2415
over top at 335'		lime	2450
shale blue	375	lime & shale	2465
red rock	400	sandy lime 1BW	2470
sand	410	lime & shale	2605
shale red	425	lime	2620
sand	435	shale blue	2625
shale red	811	lime	2645
anhydrite	818	shale grey	2670
lime grey	820	lime broken	2680
shale blue	825	lime	2710
lime grey	845	shale	2715
shale grey	850	lime	2725
shale red	1085	red rock	2730
shale & shells	1140	lime shale	2825
shale brown	1170	lime	2840
shale blue	1180	shale	2845
shale red	1195	lime $\frac{1}{2}$ BWPH 2846	2890
shale & shells	1285	shale blue 1BWPH 2975	2995
salt	1610	lime broken	3025
shale blue	1615	lime	3155
lime	1630	shale blue	3160
red rock	1640	lime	3175
lime	1655	red rock	3185
shale blue	1660	lime & shale	3245
lime	1730	lime	3365
shale brown	1740	shale blue	3375
lime	1780	lime	3400
shale blue	1785	lime & shale	3420
sandy lime $1\frac{1}{2}$ BWPH	1815	lime	3450
lime & shale	1845	lime & shale	3460
shale red 1 BWPH	1855	detrital	3550
lime	1875	lime & chert	3577
lime sandy	2010	lime	3600
shale blue	2015	lime sandy	3668
red rock	2025	Total Depth	
lime	2075		
shale blue	2095		
red rock	2110		
lime	2135		

2 BWPH 3626-30  
 1400' water 3630-3642  
 2600' " 3647-3651  
 Increase in water 3655-3665