



WESTERN TESTING CO., INC.

FORMATION TESTING

TICKET NO: 8662

P. O. BOX 1599 WICHITA, KANSAS 67201 PHONE (316) 262-5861

Elevation 1870 KB Formation LANSING A-D Eff. Pay - Ft.

District GREAT BEND Date 10-28-80 Customer Order No. -

COMPANY NAME Raymond Oil Co., Inc.

ADDRESS Ave Main Place Suite 900 Wichita KS. 67202

LEASE AND WELL NO. West #1 COUNTY Barton STATE KS Sec. 24 Twp 19S Rge 14W

Mail Invoice To SAME No. Copies Requested 5

Co. Name Address SAME No. Copies Requested 5

Mail Charts To Address SAME No. Copies Requested 5

Formation Test No. 1 Interval Tested from 3180 ft. to 3245 ft. Total Depth 3245 ft.

Packer Depth 3175 ft. Size 6 5/8 in. Packer Depth 3180 ft. Size 6 5/8 in.

Packer Depth - ft. Size - in. Packer Depth - ft. Size - in.

Depth of Selective Zone Set

Top Recorder Depth (Inside) 3182 Recorder Number 1562 Cap. 4200

Bottom Recorder Depth (Outside) 3185 Recorder Number 1562 Cap. 3900

Below Straddle Recorder Depth - ft. Recorder Number - Cap. -

Drilling Contractor Duke Drill Co INC Rig #2 Drill Collar Length - I. D. - in.

Mud Type STAMM-SALT-CLAY Viscosity 44 Weight Pipe Length 729 I. D. 3.7 in.

Weight 10 Water Loss 8.8 cc. Drill Pipe Length 2428 I. D. 3.8 in.

Chlorides 75,000 P.P.M. Test Tool Length 23 ft. Tool Size 5 1/2 in.

Jars: Make - Serial Number - Anchor Length 65 ft. Size 5 1/2 in.

Did Well Flow? NO Reversed Out NO Surface Choke Size 3/4 in. Bottom Choke Size 3/4 in.

Main Hole Size 7 7/8 in. Tool Joint Size 4 1/2 in.

Initial Flow Period

Blow: 1st blow Fair building to 2" blow STEADY THRU OUT

2nd blow STEADY 2" BLOW THRU OUT Fair BLOW

Recovered 20 ft. of Very slightly Gas Cut and very slightly oil spotted mud

Recovered - ft. of

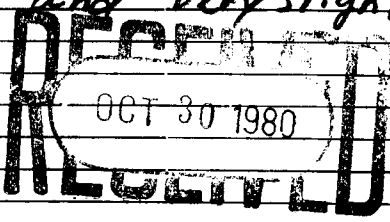
Recovered - ft. of

Recovered - ft. of

Recovered - ft. of

Recovered - ft. of

Remarks:



Time On Location 10-27-80 11:15 P.M. Time Pick Up Tool 1:00 A.M.

Time Set Packer(s) 2:50 A.M. Time Started Off Bottom 5:20 A.M. Time Off Location 8:00 A.M.

Initial Hydrostatic Pressure (A) 1702 P.S.I. Maximum Temperature 100°

Initial Flow Period Minutes 30 (B) 53 P.S.I. to (C) 43 P.S.I.

Initial Closed In Period Minutes 45 (D) 75 P.S.I.

Final Flow Period Minutes 30 (E) 64 P.S.I. to (F) 53 P.S.I.

Final Closed In Period Minutes 45 (G) 75 P.S.I.

Final Hydrostatic Pressure (H) 1702 P.S.I.

COMPANY TERMS

Western Testing Co., Inc. shall not be liable for damages of any kind to the property or personnel of the one for whom a test is made or for any loss suffered or sustained directly or indirectly through the use of its equipment, of its statements or opinion concerning the results of any test. Tools lost or damaged in the hole shall be paid at cost by the party for whom the test is made.

All charges subject to 12% interest after 60 days from date of invoice. Any expense incurred for collection will be added to the original amount.

Test Approved By Bob O'Dell Signature of Customer or his authorized representative

Western Representative Cliff Schuerman

Thank You!

FIELD INVOICE

Open Hole Test	\$ 550.00
Misrun	\$
Straddle Test	\$
Jars	\$
Selective Zone	\$
Safety Joint	\$
Standby	\$
Evaluation	\$
Extra Packer	\$
Circ. Sub.	\$
Mileage	\$ 4 MIN/K
Fluid Sampler	\$
Extra Charts	\$
Insurance	\$
TOTAL	\$ 550.00

WESTERN TESTING CO., INC.

Pressure Data

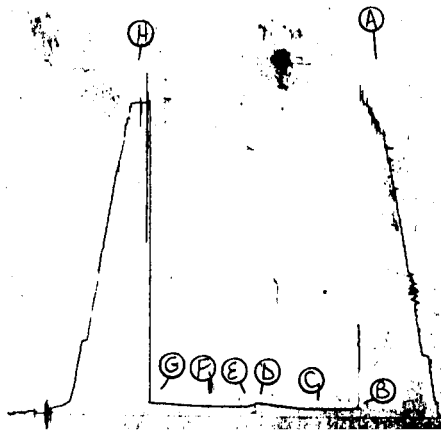
Date 10-28 Test Ticket No. 8662
 Recorder No. 1563 Capacity 4200 Location 3182 Ft.
 Clock No. _____ Elevation 1870 KB Well Temperature 100 °F

Point	Pressure		Time Given	Time Computed
A Initial Hydrostatic Mud	<u>1743</u> P.S.I.	Open Tool	<u>2:50 AM</u>	
B First Initial Flow Pressure	<u>50</u> P.S.I.	First Flow Pressure	<u>30</u> Mins.	<u>30</u> Mins.
C First Final Flow Pressure	<u>54</u> P.S.I.	Initial Closed-in Pressure	<u>45</u> Mins.	<u>45</u> Mins.
D Initial Closed-in Pressure	<u>79</u> P.S.I.	Second Flow Pressure	<u>30</u> Mins.	<u>30</u> Mins.
E Second Initial Flow Pressure	<u>63</u> P.S.I.	Final Closed-in Pressure	<u>45</u> Mins.	<u>45</u> Mins.
F Second Final Flow Pressure	<u>60</u> P.S.I.			
G Final Closed-in Pressure	<u>75</u> P.S.I.			
H Final Hydrostatic Mud	<u>1715</u> P.S.I.			

PRESSURE BREAKDOWN

First Flow Pressure		Initial Shut-In		Second Flow Pressure		Final Shut-In	
Breakdown: <u>6</u> Inc.		Breakdown: <u>15</u> Inc.		Breakdown: <u>6</u> Inc.		Breakdown: <u>15</u> Inc.	
of <u>5</u> mins. and a		of <u>3</u> mins. and a		of <u>5</u> mins. and a		of <u>3</u> mins. and a	
final inc. of <u>0</u> Min.		final inc. of <u>0</u> Min.		final inc. of <u>0</u> Min.		final inc. of <u>0</u> Min.	
Point Mins.	Press.	Point Minutes	Press.	Point Minutes	Press.	Point Minutes	Press.
P 1	<u>50</u>	0	<u>54</u>	0	<u>63</u>	0	<u>60</u>
P 2	<u>52</u>	3	<u>54</u>	5	<u>60</u>	3	<u>60</u>
P 3	<u>54</u>	6	<u>54</u>	10	<u>60</u>	6	<u>61</u>
P 4	<u>54</u>	9	<u>54</u>	15	<u>60</u>	9	<u>62</u>
P 5	<u>54</u>	12	<u>54</u>	20	<u>60</u>	12	<u>63</u>
P 6	<u>54</u>	15	<u>54</u>	25	<u>60</u>	15	<u>64</u>
P 7	<u>54</u>	18	<u>56</u>	30	<u>60</u>	18	<u>65</u>
P 8	<u>54</u>	21	<u>58</u>	35	<u>60</u>	21	<u>66</u>
P 9	<u>54</u>	24	<u>62</u>	40	<u>60</u>	24	<u>68</u>
P10	<u>54</u>	27	<u>65</u>	45	<u>60</u>	27	<u>70</u>
P11	<u>54</u>	30	<u>69</u>	50	<u>60</u>	30	<u>71</u>
P12	<u>54</u>	33	<u>70</u>	55	<u>60</u>	33	<u>72</u>
P13	<u>54</u>	36	<u>72</u>	60	<u>60</u>	36	<u>73</u>
P14	<u>54</u>	39	<u>75</u>	65	<u>60</u>	39	<u>74</u>
P15	<u>54</u>	42	<u>78</u>	70	<u>60</u>	42	<u>75</u>
P16	<u>54</u>	45	<u>79</u>	75	<u>60</u>	45	<u>75</u>
P17	<u>54</u>	48	<u>79</u>	80	<u>60</u>	48	<u>75</u>
P18	<u>54</u>	51	<u>79</u>	85	<u>60</u>	51	<u>75</u>
P19	<u>54</u>	54	<u>79</u>	90	<u>60</u>	54	<u>75</u>
P20	<u>54</u>	57	<u>79</u>		<u>60</u>	57	<u>75</u>
	<u>54</u>	60	<u>79</u>		<u>60</u>	60	<u>75</u>

TKT # 8662 - 2 -
I



1563

Company Raymond Oil Company, Inc. Lease & Well No. West #1
 Elevation 1870 Kelly Bushing Formation Lansing A-D Effective Pay - Ft. Ticket No. 8662
 Date 10-23-80 Sec. 24 Twp. 19S Range 14W County Barton State Kansas
 Test Approved by Bob O'Dell Western Representative Cliff Scheuerman

Formation Test No. 1 Interval Tested from 3180 ft. to 3245 ft. Total Depth 3245 ft.
 Packer Depth 3175 ft. Size 6 5/8 in. Packer Depth 3180 ft. Size 6 5/8 in.
 Packer Depth - ft. Size - in. Packer Depth - ft. Size - in.

Depth of Selective Zone Set -
 Top Recorder Depth (Inside) 3182 ft. Recorder Number 1563 Cap. 4200
 Bottom Recorder Depth (Outside) 3185 ft. Recorder Number 1562 Cap. 3900
 Below Straddle Recorder Depth - ft. Recorder Number - Cap. -

Drilling Contractor Duke Drilling Co., Inc. Rig #2 Drill Collar Length - I. D. - in.
 Mud Type Starch-Salt-Clay Viscosity 44 Weight Pipe Length 729 I. D. 2.7 in.
 Weight 10.0 Water Loss 8.8 cc. Drill Pipe Length 2428 I. D. 3.8 in.
 Chlorides 75,000 P.P.M. Test Tool Length 23 ft. Tool Size 5 1/2 in.
 Jars: Make - Serial Number - Anchor Length 65 ft. Size 5 1/2 in.
 Did Well Flow? No Reversed Out No Surface Choke Size 3/4 in. Bottom Choke Size 3/4 in.
 Main Hole Size 7 7/8 in. Tool Joint Size 4 1/2 in.

Blow: Initial flow period fair building to 2 inch blow steady throughout. Final flow period steady 2 inch blow throughout. Fair blow.

Recovered 20 ft. of very slightly gas cut and very slightly oil spotted mud
 Recovered ft. of
 Recovered ft. of
 Recovered ft. of
 Recovered ft. of

Remarks:

Time Set Packer(s) 2:50 A.M. Time Started Off Bottom 5:20 P.M. Maximum Temperature 100
 Initial Hydrostatic Pressure (A) 1743 P.S.I.
 Initial Flow Period Minutes 30 (B) 50 P.S.I. to (C) 54 P.S.I.
 Initial Closed In Period Minutes 45 (D) 79 P.S.I.
 Final Flow Period Minutes 30 (E) 63 P.S.I. to (F) 60 P.S.I.
 Final Closed In Period Minutes 45 (G) 75 P.S.I.
 Final Hydrostatic Pressure (H) 1715 P.S.I.

WESTERN TESTING CO., INC.
Pressure Data

Date 10-28-80 Test Ticket No. 8662
 Recorder No. 1563 Capacity 4200 Location 3182 Fr.
 Clock No. - Elevation 1870 Kelly Bushing Well Temperature 100 °F

Point	Pressure		Time Given	Time Computed
A Initial Hydrostatic Mud	<u>1743</u> P.S.I.	Open Tool	<u>2:50A</u> M	
B First Initial Flow Pressure	<u>50</u> P.S.I.	First Flow Pressure	<u>30</u> Mins.	<u>30</u> Mins.
C First Final Flow Pressure	<u>54</u> P.S.I.	Initial Closed-in Pressure	<u>45</u> Mins.	<u>45</u> Mins.
D Initial Closed-in Pressure	<u>79</u> P.S.I.	Second Flow Pressure	<u>30</u> Mins.	<u>30</u> Mins.
E Second Initial Flow Pressure	<u>63</u> P.S.I.	Final Closed-in Pressure	<u>45</u> Mins.	<u>45</u> Mins.
F Second Final Flow Pressure	<u>60</u> P.S.I.			
G Final Closed-in Pressure	<u>75</u> P.S.I.			
H Final Hydrostatic Mud	<u>1715</u> P.S.I.			

PRESSURE BREAKDOWN

First Flow Pressure
 Breakdown: 6 Inc.
 of 5 mins. and a
 final inc. of 0 Min.

Initial Shut-In
 Breakdown: 15 Inc.
 of 3 mins. and a
 final inc. of 0 Min.

Second Flow Pressure
 Breakdown: 6 Inc.
 of 5 mins. and a
 final inc. of 0 Min.

Final Shut-In
 Breakdown: 15 Inc.
 of 3 mins. and a
 final inc. of 0 Min.

Point Mins.	Press.	Point Minutes	Press.	Point Minutes	Press.	Point Minutes	Press.
P 1 <u>0</u>	<u>50</u>	<u>0</u>	<u>54</u>	<u>0</u>	<u>63</u>	<u>0</u>	<u>60</u>
P 2 <u>5</u>	<u>52</u>	<u>3</u>	<u>54</u>	<u>5</u>	<u>60</u>	<u>3</u>	<u>60</u>
P 3 <u>10</u>	<u>54</u>	<u>6</u>	<u>54</u>	<u>10</u>	<u>60</u>	<u>6</u>	<u>61</u>
P 4 <u>15</u>	<u>54</u>	<u>9</u>	<u>54</u>	<u>15</u>	<u>60</u>	<u>9</u>	<u>62</u>
P 5 <u>20</u>	<u>54</u>	<u>12</u>	<u>54</u>	<u>20</u>	<u>60</u>	<u>12</u>	<u>63</u>
P 6 <u>25</u>	<u>54</u>	<u>15</u>	<u>54</u>	<u>25</u>	<u>60</u>	<u>15</u>	<u>64</u>
P 7 <u>30</u>	<u>54</u>	<u>18</u>	<u>56</u>	<u>30</u>	<u>60</u>	<u>18</u>	<u>65</u>
P 8 _____	_____	<u>21</u>	<u>58</u>	_____	_____	<u>21</u>	<u>66</u>
P 9 _____	_____	<u>24</u>	<u>62</u>	_____	_____	<u>24</u>	<u>68</u>
P10 _____	_____	<u>27</u>	<u>65</u>	_____	_____	<u>27</u>	<u>70</u>
P11 _____	_____	<u>30</u>	<u>69</u>	_____	_____	<u>30</u>	<u>71</u>
P12 _____	_____	<u>33</u>	<u>70</u>	_____	_____	<u>33</u>	<u>72</u>
P13 _____	_____	<u>36</u>	<u>72</u>	_____	_____	<u>36</u>	<u>73</u>
P14 _____	_____	<u>39</u>	<u>75</u>	_____	_____	<u>39</u>	<u>74</u>
P15 _____	_____	<u>42</u>	<u>78</u>	_____	_____	<u>42</u>	<u>75</u>
P16 _____	_____	<u>45</u>	<u>79</u>	_____	_____	<u>45</u>	<u>75</u>
P17 _____	_____	_____	_____	_____	_____	_____	_____
P18 _____	_____	_____	_____	_____	_____	_____	_____
P19 _____	_____	_____	_____	_____	_____	_____	_____
P20 _____	_____	_____	_____	_____	_____	_____	_____



WESTERN TESTING CO., INC.
FORMATION TESTING

TICKET No 8663

P. O. BOX 1599 PHONE (316) 262-5861
WICHITA, KANSAS 67201

Elevation 1870 KB Formation LANSING F50NE Eff. Pay Ft.

District GREAT BEND Date 10-28-80 Customer Order No.

COMPANY NAME RAYMOND OIL CORP.
ADDRESS One Main Place, Suite 900 Wichita KS 67202
LEASE AND WELL NO. West #1 COUNTY Barton STATE KS Sec 24 Twp 19S Rge 14W
Mail Invoice To SAME Address No. Copies Requested 5
Co. Name Address
Mail Charts To SAME Address No. Copies Requested 5

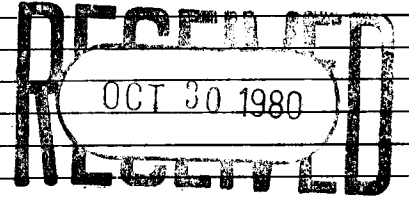
Formation Test No. #2 Interval Tested from 3241 ft. to 3270 ft. Total Depth 3270 ft.
Packer Depth 3236 ft. Size 6 5/8 in. Packer Depth 3241 ft. Size 6 5/8 in.
Packer Depth ft. Size in. Packer Depth ft. Size in.

Depth of Selective Zone Set
Top Recorder Depth (Inside) 3259 ft. Recorder Number 1563 Cap. 4200
Bottom Recorder Depth (Outside) 3262 ft. Recorder Number 1562 Cap. 3900
Below Straddle Recorder Depth ft. Recorder Number Cap.

Drilling Contractor DAKEDIB Co. INC Right 2 Drill Collar Length I. D. in.
Mud Type STARCH-SALT-CLAY Viscosity 44 Weight Pipe Length 760 I. D. 2.7 in.
Weight 10 Water Loss 8.8 cc. Drill Pipe Length 2458 I. D. 3.8 in.
Chlorides 75.000 P.P.M. Test Tool Length 23 ft. Tool Size 5 1/2 in.
Jars: Make Serial Number Anchor Length 29 ft. Size 5 1/2 in.
Did Well Flow? NO Reversed Out NO Surface Choke Size 3/4 in. Bottom Choke Size 3/4 in.
Main Hole Size 7 3/8 in. Tool Joint Size 4 1/2 in.

Initial Flow Period
Blow: 1st Blow weak - 1/2" BLOW DIED after 15 but came back as a weak 1/4" BLOW 2nd NO BLOW FLISHED TOOL - weak BLOW for 20 min then died

Recovered ft. of Fluid
Recovered 5 ft. of very slightly oil spotted MUD
Recovered ft. of
Recovered ft. of
Recovered ft. of
Remarks:



Time On Location 3:30 P.M. Time Pick Up Tool 5:00 P.M. Time Off Location 10:30 A.M.
Time Set Packer(s) 6:00 P.M. Time Started Off Bottom 8:30 P.M. Maximum Temperature 99°
Initial Hydrostatic Pressure (A) 1800 P.S.I.
Initial Flow Period Minutes 30 (B) 60 P.S.I. to (C) 40 P.S.I.
Initial Closed In Period Minutes 45 (D) 60 P.S.I.
Final Flow Period Minutes 30 (E) 50 P.S.I. to (F) 40 P.S.I.
Final Closed In Period Minutes 45 (G) 50 P.S.I.
Final Hydrostatic Pressure (H) 1780 P.S.I.

COMPANY TERMS
Western Testing Co., Inc. shall not be liable for damages of any kind to the property or personnel of the one for whom a test is made or for any loss suffered or sustained directly or indirectly through the use of its equipment, of its statements or opinion concerning the results of any test. Tools lost or damaged in the hole shall be paid at cost by the party for whom the test is made.
All charges subject to 12% interest after 60 days from date of invoice. Any expense incurred for collection will be added to the original amount.

Test Approved By Bob O'Dell
Signature of Customer or his authorized representative

Western Representative Cliff Schaeffer
Thank You

FIELD INVOICE

Open Hole Test	\$ 550.00
Misrun	\$
Straddle Test	\$
Jars	\$
Selective Zone	\$
Safety Joint	\$
Standby	\$
Evaluation	\$
Extra Packer	\$
Circ. Sub.	\$
Mileage	\$ N/C
Fluid Sampler	\$
Extra Charts	\$
Insurance	\$
TOTAL	\$ 550.00

WESTERN TESTING CO., INC.
Pressure Data

Date 10-28 Test Ticket No. 8663
 Recorder No. 1563 Capacity 4200 Location 3259 Ft.
 Clock No. _____ Elevation 1870 KB Well Temperature 99 °F

Point	Pressure		Time Given	Time Computed
A Initial Hydrostatic Mud	<u>1793</u> P.S.I.	Open Tool	<u>6:00</u> P.M.	
B First Initial Flow Pressure	<u>67</u> P.S.I.	First Flow Pressure	<u>30</u> Mins.	<u>30</u> Mins.
C First Final Flow Pressure	<u>58</u> P.S.I.	Initial Closed-in Pressure	<u>45</u> Mins.	<u>42</u> Mins.
D Initial Closed-in Pressure	<u>65</u> P.S.I.	Second Flow Pressure	<u>30</u> Mins.	<u>30</u> Mins.
E Second Initial Flow Pressure	<u>62</u> P.S.I.	Final Closed-in Pressure	<u>45</u> Mins.	<u>45</u> Mins.
F Second Final Flow Pressure	<u>65</u> P.S.I.			
G Final Closed-in Pressure	<u>65</u> P.S.I.			
H Final Hydrostatic Mud	<u>1776</u> P.S.I.			

PRESSURE BREAKDOWN

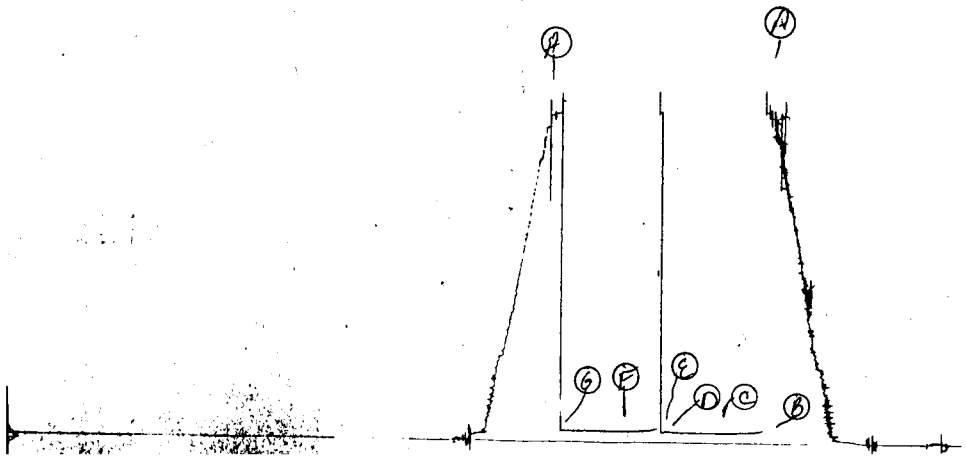
First Flow Pressure Breakdown: <u>6</u> Inc. of <u>5</u> mins. and a final inc. of <u>0</u> Min.	Initial Shut-In Breakdown: <u>14</u> Inc. of <u>3</u> mins. and a final inc. of <u>0</u> Min.	Second Flow Pressure Breakdown: <u>6</u> Inc. of <u>5</u> mins. and a final inc. of <u>0</u> Min.	Final Shut-In Breakdown: <u>15</u> Inc. of <u>3</u> mins. and a final inc. of <u>0</u> Min.
--	---	---	---

Point Mins.	Press.	Point Minutes	Press.	Point Minutes	Press.	Point Minutes	Press.	
P 1 0	<u>67</u>	0	<u>58</u>	0	<u>62</u>	0	<u>65</u>	
P 2 5	<u>67</u>	3	}	5	<u>75</u>	3	}	
P 3 10	<u>63</u>	6		10	<u>71</u>	6		
P 4 15	<u>62</u>	9		15	<u>68</u>	9		
P 5 20	<u>60</u>	12	<u>58</u>	20	<u>66</u>	12	}	
P 6 25	<u>59</u>	15	<u>59</u>	25	<u>65</u>	15		<u>65</u>
P 7 30	<u>58</u>	18	<u>60</u>	30	<u>65</u>	18		
P 8 35		21	}	35		21	}	
P 9 40		24		40		24		
P 10 45		27		45		27		
P 11 50		30	<u>60</u>	50		30	<u>65</u>	
P 12 55		33	<u>62</u>	55		33	}	
P 13 60		36	<u>63</u>	60		36		
P 14		39	<u>64</u>	65		39		
P 15		42	<u>65</u>	70		42	}	
P 16		45		75		45		<u>65</u>
P 17		48		80		48		
P 18		51		85		51	}	
P 19		54		90		54		
P 20		57				57		
		60				60		

583

JK #8663

I



Company Raymond Oil Company, Inc. Lease & Well No. West #1
 Elevation 1870 Kelly Bushing Formation Lansing F Zone Effective Pay - Ft. Ticket No. 8663
 Date 10-28-80 Sec. 24 Twp. 19S Range 14W County Barton State Kansas
 Test Approved by Bob O'Dell Western Representative Cliff Scheuerman

Formation Test No. 2 Interval Tested from 3241 ft. to 3270 ft. Total Depth 3270 ft.
 Packer Depth 3236 ft. Size 6 5/8 in. Packer Depth 3241 ft. Size 6 5/8 in.
 Packer Depth - ft. Size - in. Packer Depth - ft. Size - in.
 Depth of Selective Zone Set -

Top Recorder Depth (Inside) 3259 ft. Recorder Number 1563 Cap 4200
 Bottom Recorder Depth (Outside) 3262 ft. Recorder Number 1562 Cap 3900
 Below Straddle Recorder Depth - ft. Recorder Number - Cap -

Drilling Contractor Duke Drilling Co, Inc Rig #2 Drill Collar Length - I. D. - in.
 Mud Type Starch-Salt-Clay Viscosity 44 Weight Pipe Length 760 I. D. 2.7 in.
 Weight 10.0 Water Loss 8.8 cc. Drill Pipe Length 2458 I. D. 3.8 in.
 Chlorides 75,000 P.P.M. Test Tool Length 23 ft. Tool Size 5 1/2 in.
 Jars: Make - Serial Number - Anchor Length 29 ft. Size 5 1/2 in.
 Did Well Flow? No Reversed Out No Surface Choke Size 3/4 in. Bottom Choke Size 3/4 in.
 Main Hole Size 7 7/8 in. Tool Joint Size 4 1/2 in.

Blow: Initial flow period weak - 1/2 inch blow died after 15 minutes but came back in 5 minutes.
Weak 1/4 inch final flow period. No blow flushed tool - weak blow for 20 minutes then

Recovered 5 ft. of very slightly oil spotted mud died.
 Recovered ft. of
 Recovered ft. of
 Recovered ft. of
 Recovered ft. of

Remarks:

Time Set Packer(s) 6:00 ~~A.M.~~ P.M. Time Started Off Bottom 8:30 ~~A.M.~~ P.M. Maximum Temperature 99
 Initial Hydrostatic Pressure (A) 1793 P.S.I.
 Initial Flow Period Minutes 30 (B) 67 P.S.I. to (C) 58 P.S.I.
 Initial Closed In Period Minutes 42 (D) 65 P.S.I.
 Final Flow Period Minutes 30 (E) 62 P.S.I. to (F) 65 P.S.I.
 Final Closed In Period Minutes 45 (G) 65 P.S.I.
 Final Hydrostatic Pressure (H) 1776 P.S.I.

WESTERN TESTING CO., INC.
Pressure Data

Date 10/28/80 Test Ticket No. 8663
 Recorder No. 1563 Capacity 4200 Location 3259 Ft.
 Clock No. --- Elevation 1870 Kelly Bushing Well Temperature 99 °F

Point	Pressure		Time Given	Time Computed
A Initial Hydrostatic Mud	<u>1793</u> P.S.I.	Open Tool	<u>6:00P</u> M	
B First Initial Flow Pressure	<u>67</u> P.S.I.	First Flow Pressure	<u>30</u> Mins	<u>30</u> Mins.
C First Final Flow Pressure	<u>58</u> P.S.I.	Initial Closed-in Pressure	<u>45</u> Mins	<u>42</u> Mins.
D Initial Closed-in Pressure	<u>65</u> P.S.I.	Second Flow Pressure	<u>30</u> Mins	<u>30</u> Mins.
E Second Initial Flow Pressure	<u>62</u> P.S.I.	Final Closed-in Pressure	<u>45</u> Mins	<u>45</u> Mins.
F Second Final Flow Pressure	<u>65</u> P.S.I.			
G Final Closed-in Pressure	<u>65</u> P.S.I.			
H Final Hydrostatic Mud	<u>1776</u> P.S.I.			

PRESSURE BREAKDOWN

Point Mins.	First Flow Pressure	Initial Shut-In	Second Flow Pressure	Final Shut-In
	Breakdown: <u>6</u> Inc. of <u>5</u> mins. and a final inc. of <u>0</u> Min.	Breakdown: <u>14</u> Inc. of <u>3</u> mins. and a final inc. of <u>0</u> Min.	Breakdown: <u>6</u> Inc. of <u>5</u> mins. and a final inc. of <u>0</u> Min.	Breakdown: <u>15</u> Inc. of <u>3</u> mins. and a final inc. of <u>0</u> Min.
	Point Minutes	Point Minutes	Point Minutes	Point Minutes
P 1	<u>0</u>	<u>0</u>	<u>0</u>	<u>0</u>
P 2	<u>5</u>	<u>3</u>	<u>5</u> Flushed tool	<u>3</u>
P 3	<u>10</u>	<u>6</u>	<u>10</u>	<u>6</u>
P 4	<u>15</u>	<u>9</u>	<u>15</u>	<u>9</u>
P 5	<u>20</u>	<u>12</u>	<u>20</u>	<u>12</u>
P 6	<u>25</u>	<u>15</u>	<u>25</u>	<u>15</u>
P 7	<u>30</u>	<u>18</u>	<u>30</u>	<u>18</u>
P 8		<u>21</u>		<u>21</u>
P 9		<u>24</u>		<u>24</u>
P10		<u>27</u>		<u>27</u>
P11		<u>30</u>		<u>30</u>
P12		<u>33</u>		<u>33</u>
P13		<u>36</u>		<u>36</u>
P14		<u>39</u>		<u>39</u>
P15		<u>42</u>		<u>42</u>
P16				<u>45</u>
P17				
P18				
P19				
P20				



WESTERN TESTING CO., INC.

FORMATION TESTING

TICKET No 8664

P. O. BOX 1599 PHONE (316) 262-5861 WICHITA, KANSAS 67201

Elevation 1870 KB Formation LANSING G Zone Eff. Pay - Ft.

District GREAT BEND Date 10-29-80 Customer Order No.

COMPANY NAME RAYMOND Oil Co. Inc. One Main Place, Suite 900

ADDRESS Wichita KS 67202

LEASE AND WELL NO. West #1 COUNTY Barton STATE KS Sec 24 Twp 19S Rge 14W

Mail Invoice To #1 West SAME No. Copies Requested 5

Mail Charts To SAME Address No. Copies Requested 5

Formation Test No. 43 Interval Tested from 3267 ft. to 3290 ft. Total Depth 3290 ft.

Packer Depth 3262 ft. Size 6 5/8 in. Packer Depth 3267 ft. Size 6 3/4 in.

Packer Depth - ft. Size - in. Packer Depth - ft. Size - in.

Depth of Selective Zone Set

Top Recorder Depth (Inside) 3281 ft. Recorder Number 1563 Cap. 4200

Bottom Recorder Depth (Outside) 3287 ft. Recorder Number 1562 Cap. 3900

Below Straddle Recorder Depth - ft. Recorder Number - Cap. -

Drilling Contractor Duke Dril. Inc. Rig #2 Drill Collar Length - I. D. - in.

Mud Type Starch-Salt Clay Viscosity 45 Weight Pipe Length 729 I. D. 2.9 in.

Weight 10.4 Water Loss 17 cc. Drill Pipe Length 2515 I. D. - in.

Chlorides 72000 P.P.M. Test Tool Length 23 ft. Tool Size 5 1/2 in.

Jars: Make - Serial Number - Anchor Length 23 ft. Size 5 1/2 in.

Did Well Flow? NO Reversed Out NO Surface Choke Size 3/4 in. Bottom Choke Size 3/4 in.

Initial Flow Period Main Hole Size 7 1/2 in. Tool Joint Size 4 1/2 in.

Blow: 1st BLOW Fair to stand thru out. building to off bottom of bucket 2nd STRONG BLOW

Recovered 372 ft. of Gas in Pipe

Recovered 92 ft. of Oil & Gas cut Mud + wt. Water

Recovered - ft. of -

Recovered - ft. of 30' 20% oil 2% Water 78% Mud

Recovered - ft. of 60' 22% oil 3% Water 75% Mud

Remainder of Tool - 42% oil 12% Water 46% Mud

Time On Location 5:30 A.M. Time Pick Up Tool 7:00 A.M. Time Off Location 2:00 P.M.

Time Set Packer(s) 8:30 A.M. Time Started Off Bottom 11:00 A.M. Maximum Temperature 100°

Initial Hydrostatic Pressure (A) 1766 P.S.I.

Initial Flow Period Minutes 30 (B) 100 P.S.I. to (C) 70 P.S.I.

Initial Closed In Period Minutes 45 (D) 559 P.S.I.

Final Flow Period Minutes 30 (E) 90 P.S.I. to (F) 80 P.S.I.

Final Closed In Period Minutes 45 (G) 480 P.S.I.

Final Hydrostatic Pressure (H) 1747 P.S.I.

COMPANY TERMS

Western Testing Co., Inc. shall not be liable for damages of any kind to the property or personnel of the one for whom a test is made or for any loss suffered or sustained directly or indirectly through the use of its equipment, of its statements or opinion concerning the results of any test. Tools lost or damaged in the hole shall be paid at cost by the party for whom the test is made.

All charges subject to 12% interest after 60 days from date of invoice. Any expense incurred for collection will be added to the original amount.

Test Approved By [Signature] Signature of Customer or his authorized representative

Western Representative [Signature]

Thank You!

FIELD INVOICE

Table with 2 columns: Item, Amount. Includes Open Hole Test \$550.00, Mileage \$N/C, and TOTAL \$550.00.

WESTERN TESTING CO., INC.

Pressure Data

Date 10-29 Test Ticket No. 8664
 Recorder No. 1563 Capacity 4200 Location 3281 Ft.
 Clock No. Elevation 1870 KB Well Temperature 100 °F

Point	Pressure		Time Given	Time Computed
A Initial Hydrostatic Mud	<u>1753</u> P.S.I.	Open Tool	<u>8:30</u> A.M.	
B First Initial Flow Pressure	<u>78</u> P.S.I.	First Flow Pressure	<u>30</u> Mins.	<u>30</u> Mins.
C First Final Flow Pressure	<u>66</u> P.S.I.	Initial Closed-in Pressure	<u>45</u> Mins.	<u>45</u> Mins.
D Initial Closed-in Pressure	<u>553</u> P.S.I.	Second Flow Pressure	<u>30</u> Mins.	<u>30</u> Mins.
E Second Initial Flow Pressure	94 P.S.I.	Final Closed-in Pressure	<u>45</u> Mins.	<u>48</u> Mins.
F Second Final Flow Pressure	<u>84</u> P.S.I.			
G Final Closed-in Pressure	<u>453</u> P.S.I.			
H Final Hydrostatic Mud	<u>1743</u> P.S.I.			

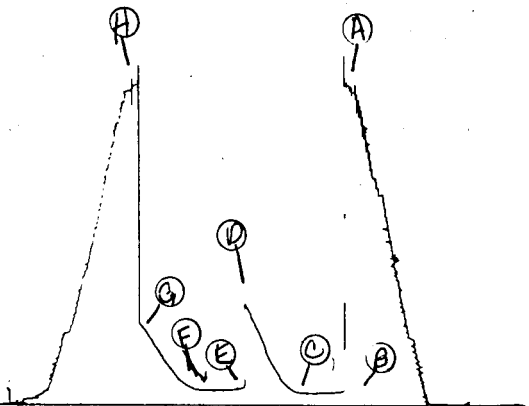
PRESSURE BREAKDOWN

First Flow Pressure		Initial Shut-In		Second Flow Pressure		Final Shut-In	
Breakdown: <u>6</u> Inc.		Breakdown: <u>15</u> Inc.		Breakdown: <u>6</u> Inc.		Breakdown: <u>16</u> Inc.	
of <u>5</u> mins. and a		of <u>3</u> mins. and a		of <u>5</u> mins. and a		of <u>3</u> mins. and a	
final inc. of <u>0</u> Min.		final inc. of <u>0</u> Min.		final inc. of <u>0</u> Min.		final inc. of <u>0</u> Min.	
Point Mins.	Press.	Point Minutes	Press.	Point Minutes	Press.	Point Minutes	Press.
P 1	<u>0</u>	<u>0</u>	<u>66</u>	<u>0</u>	<u>94</u>	<u>0</u>	<u>84</u>
P 2	<u>5</u>	<u>3</u>	<u>69</u>	<u>5</u>	<u>91</u>	<u>3</u>	<u>84</u>
P 3	<u>10</u>	<u>6</u>	<u>73</u>	<u>10</u>	<u>84</u>	<u>6</u>	<u>88</u>
P 4	<u>15</u>	<u>9</u>	<u>86</u>	<u>15</u>	<u>(</u>	<u>9</u>	<u>95</u>
P 5	<u>20</u>	<u>12</u>	<u>103</u>	<u>20</u>	<u>)</u>	<u>12</u>	<u>106</u>
P 6	<u>25</u>	<u>15</u>	<u>123</u>	<u>25</u>	<u> </u>	<u>15</u>	<u>121</u>
P 7	<u>30</u>	<u>18</u>	<u>162</u>	<u>30</u>	<u>84</u>	<u>18</u>	<u>138</u>
P 8	<u>35</u>	<u>21</u>	<u>205</u>	<u>35</u>		<u>21</u>	<u>168</u>
P 9	<u>40</u>	<u>24</u>	<u>237</u>	<u>40</u>		<u>24</u>	<u>196</u>
P10	<u>45</u>	<u>27</u>	<u>284</u>	<u>45</u>		<u>27</u>	<u>224</u>
P11	<u>50</u>	<u>30</u>	<u>347</u>	<u>50</u>		<u>30</u>	<u>259</u>
P12	<u>55</u>	<u>33</u>	<u>390</u>	<u>55</u>		<u>33</u>	<u>295</u>
P13	<u>60</u>	<u>36</u>	<u>438</u>	<u>60</u>		<u>36</u>	<u>323</u>
P14		<u>39</u>	<u>481</u>	<u>65</u>		<u>39</u>	<u>362</u>
P15		<u>42</u>	<u>530</u>	<u>70</u>		<u>42</u>	<u>397</u>
P16		<u>45</u>	<u>553</u>	<u>75</u>		<u>45</u>	<u>429</u>
P17		<u>48</u>		<u>80</u>		<u>48</u>	<u>453</u>
P18		<u>51</u>		<u>85</u>		<u>51</u>	
P19		<u>54</u>		<u>90</u>		<u>54</u>	
P20		<u>57</u>				<u>57</u>	
		<u>60</u>				<u>60</u>	

1563

TK # 8664

I



Company Raymond Oil Company, Inc. Lease & Well No. #1 West
 Elevation 1870 Kelly Bushien Formation Lansing G Zone Effective Pay - Ft. Ticket No. 8664
 Date 10-29-80 Sec. 24 Twp. 19S Range 14W County Barton State Kansas
 Test Approved by Bob O'Dell Western Representative Cliff Scheuerman

Formation Test No. 3 Interval Tested from 3267 ft. to 3290 ft. Total Depth 3290 ft.
 Packer Depth 3262 ft. Size 6 5/8 in. Packer Depth 3267 ft. Size 6 5/8 in.
 Packer Depth - ft. Size - in. Packer Depth - ft. Size - in.
 Depth of Selective Zone Set -

Top Recorder Depth (Inside) 3281 ft. Recorder Number 1563 Cap. 4200
 Bottom Recorder Depth (Outside) 3284 ft. Recorder Number 1562 Cap. 3900
 Below Straddle Recorder Depth - ft. Recorder Number - Cap. -

Drilling Contractor Duke Drilling inc Rig #2 Drill Collar Length - I. D. - in.
 Mud Type Starch-Salt-Clay Viscosity 45 Weight Pipe Length 729 I. D. 2.7 in.
 Weight 10.4 Water Loss 17.0 cc. Drill Pipe Length 2515 I. D. - in.
 Chlorides 72,000 P.P.M. Test Tool Length 23 ft. Tool Size 5 1/2 in.
 Jars: Make - Serial Number - Anchor Length 23 ft. Size 5 1/2 in.
 Did Well Flow? No Reversed Out No Surface Choke Size 3/4 in. Bottom Choke Size 3/4 in.
 Main Hole Size 7 7/8 in. Tool Joint Size 4 1/2 in.

Blow: Initial flow period blow fair to strong throughout. Final flow period strong blow building to off bottom of bucket.

Recovered 372 ft. of gas in pipe
 Recovered 92 ft. of oil & gas cut mud & water
 Recovered - ft. of 30 ft. - 20% oil, 2% water, 78% mud
 Recovered - ft. of 60 ft. - 22% oil, 3% water, 75% mud
 Recovered - ft. of 42 Ft. - 42% oil, 12% water 46% mud
 Remarks: 2 ft. on top of tool

Time Set Packer(s) 8:30 ^{A.M.}/_{P.M.} Time Started Off Bottom 11:00 ^{A.M.}/_{P.M.} Maximum Temperature 100
 Initial Hydrostatic Pressure (A) 1753 P.S.I.
 Initial Flow Period Minutes 30 (B) 78 P.S.I. to (C) 66 P.S.I.
 Initial Closed In Period Minutes 45 (D) 553 P.S.I.
 Final Flow Period Minutes 30 (E) 94 P.S.I. to (F) 84 P.S.I.
 Final Closed In Period Minutes 48 (G) 453 P.S.I.
 Final Hydrostatic Pressure (H) 1743 P.S.I.

WESTERN TESTING CO., INC.
Pressure Data

Date 10-29-80 Test Ticket No. 8664
 Recorder No. 1563 Capacity 4200 Location 3281 Fr.
 Clock No. - Elevation 1870 Kelly Bushing Well Temperature 100 °F

Point	Pressure		Time Given	Time Computed
A Initial Hydrostatic Mud	<u>1753</u>	P.S.I.	<u>8:30A</u>	<u>M</u>
B First Initial Flow Pressure	<u>78</u>	P.S.I.	<u>30</u>	<u>Mins.</u>
C First Final Flow Pressure	<u>66</u>	P.S.I.	<u>45</u>	<u>Mins.</u>
D Initial Closed-in Pressure	<u>553</u>	P.S.I.	<u>30</u>	<u>Mins.</u>
E Second Initial Flow Pressure	<u>94</u>	P.S.I.	<u>45</u>	<u>Mins.</u>
F Second Final Flow Pressure	<u>84</u>	P.S.I.		
G Final Closed-in Pressure	<u>453</u>	P.S.I.		
H Final Hydrostatic Mud	<u>1743</u>	P.S.I.		

PRESSURE BREAKDOWN

First Flow Pressure		Initial Shut-In		Second Flow Pressure		Final Shut-In	
Breakdown: <u>6</u> Inc.		Breakdown: <u>15</u> Inc.		Breakdown: <u>6</u> Inc.		Breakdown: <u>16</u> Inc.	
of <u>5</u> mins. and a		of <u>3</u> mins. and a		of <u>5</u> mins. and a		of <u>3</u> mins. and a	
final inc. of <u>0</u> Min.		final inc. of <u>0</u> Min.		final inc. of <u>0</u> Min.		final inc. of <u>0</u> Min.	
Point Mins.	Press.	Point Minutes	Press.	Point Minutes	Press.	Point Minutes	Press.
P 1 <u>0</u>	<u>78</u>	<u>0</u>	<u>66</u>	<u>0</u>	<u>94</u>	<u>0</u>	<u>84</u>
P 2 <u>5</u>	<u>71</u>	<u>3</u>	<u>69</u>	<u>5</u>	<u>91</u>	<u>3</u>	<u>84</u>
P 3 <u>10</u>	<u>69</u>	<u>6</u>	<u>73</u>	<u>10</u>	<u>84</u>	<u>6</u>	<u>88</u>
P 4 <u>15</u>	<u>67</u>	<u>9</u>	<u>86</u>	<u>15</u>	<u>84</u>	<u>9</u>	<u>95</u>
P 5 <u>20</u>	<u>66</u>	<u>12</u>	<u>103</u>	<u>20</u>	<u>84</u>	<u>12</u>	<u>106</u>
P 6 <u>25</u>	<u>66</u>	<u>15</u>	<u>123</u>	<u>25</u>	<u>84</u>	<u>15</u>	<u>121</u>
P 7 <u>30</u>	<u>66</u>	<u>18</u>	<u>162</u>	<u>30</u>	<u>84</u>	<u>18</u>	<u>138</u>
P 8		<u>21</u>	<u>205</u>			<u>21</u>	<u>168</u>
P 9		<u>24</u>	<u>237</u>			<u>24</u>	<u>196</u>
P10		<u>27</u>	<u>284</u>			<u>27</u>	<u>224</u>
P11		<u>30</u>	<u>347</u>			<u>30</u>	<u>259</u>
P12		<u>33</u>	<u>390</u>			<u>33</u>	<u>295</u>
P13		<u>36</u>	<u>438</u>			<u>36</u>	<u>323</u>
P14		<u>39</u>	<u>481</u>			<u>39</u>	<u>362</u>
P15		<u>42</u>	<u>530</u>			<u>42</u>	<u>397</u>
P16		<u>45</u>	<u>553</u>			<u>45</u>	<u>429</u>
P17						<u>48</u>	<u>453</u>
P18							
P19							
P20							



WESTERN TESTING CO., INC.

FORMATION TESTING

P. O. BOX 1599 WICHITA, KANSAS 67201 PHONE (316) 262-5861

Elevation 1870 K B Formation Lansing HI + J Eff. Pay - Ft. Ticket No. 8665

District GREAT BEND Date 10-30-80 Customer Order No. COMPANY NAME Raymond Oil Co. Inc. ADDRESS Wichita KS LEASE AND WELL NO. WEST #1 COUNTY BARTON STATE KS Sec. 24 Twp 19S Rge 14W

Formation Test No. #4 Interval Tested from 3303 ft. to 3365 ft. Total Depth 3365 ft. Packer Depth 3298 ft. Size 65/8 in. Packer Depth 3303 ft. Size 65/8 in.

Top Recorder Depth (Inside) 3353 ft. Recorder Number 1563 Cap. 4200 Bottom Recorder Depth (Outside) 3356 ft. Recorder Number 1562 Cap. 3900

Drilling Contractor Dute Drill Co INC Rig #2 Mud Type STACHSILKY Viscosity 44 Weight 10.7 Water Loss 19.8 cc. Chlorides 98000 P.P.M. Jars: Make BOWEN WTC Serial Number 414

Blow: 1st Blow Strong 2nd Blow Strong Throughout test

Recovered 1713 ft. of Gas in Pipe Recovered 106 ft. of HEAVY Gas cut Mud Recovered 605 ft. of HEAVY Gas cut and Oil Frothy

Time On Location 7:00 A.M. Time Pick Up Tool 10:15 A.M. Time Off Location 6:00 P.M. Time Set Packer(s) 11:45 A.M. Time Started Off Bottom 2:15 P.M. Maximum Temperature 103 Initial Hydrostatic Pressure (A) 1829 P.S.I. Initial Flow Period (B) 30 Minutes (C) 258 P.S.I. Initial Closed In Period (D) 45 Minutes (E) 740 P.S.I. Final Flow Period (F) 30 Minutes (G) 301 P.S.I. Final Closed In Period (H) 45 Minutes (I) 644 P.S.I. Final Hydrostatic Pressure (J) 1860 P.S.I.

COMPANY TERMS

Western Testing Co., Inc. shall not be liable for damages of any kind to the property or personnel of the one for whom a test is made or for any loss suffered or sustained directly or indirectly through the use of its equipment, of its statements or opinion concerning the results of any test.

Test Approved By Bob O'Dell Signature of Customer or his authorized representative

Western Representative Craig Scheuerman

FIELD INVOICE

Open Hole Test \$ 550.00 Misrun \$ Straddle Test \$ Jars \$ 300.00 Selective Zone \$ Safety Joint \$ 50.00 Standby \$ Evaluation \$ Extra Packer \$ Circ. Sub. \$ 30.00 Mileage \$ NTC Fluid Sampler \$ Extra Charts \$ Insurance \$ 40.00 TOTAL \$ 970.00

Thank You!

WESTERN TESTING CO., INC.

Pressure Data

Date 10-30 Recorder No. 1563 Capacity 4200 Test Ticket No. 8665
 Clock No. _____ Elevation 1870 KB Location 3353 Ft. Well Temperature 103 °F

Point	Pressure		Time Given	Time Computed
A Initial Hydrostatic Mud	<u>1907</u>	P.S.I.	<u>11:45 AM</u>	
B First Initial Flow Pressure	<u>110</u>	P.S.I.	<u>30</u> Mins.	<u>30</u> Mins.
C First Final Flow Pressure	<u>272</u>	P.S.I.	<u>45</u> Mins.	<u>45</u> Mins.
D Initial Closed-in Pressure	<u>760</u>	P.S.I.	<u>30</u> Mins.	<u>30</u> Mins.
E Second Initial Flow Pressure	<u>313</u>	P.S.I.	<u>45</u> Mins.	<u>45</u> Mins.
F Second Final Flow Pressure	<u>310</u>	P.S.I.		
G Final Closed-in Pressure	<u>651</u>	P.S.I.		
H Final Hydrostatic Mud	<u>1871</u>	P.S.I.		

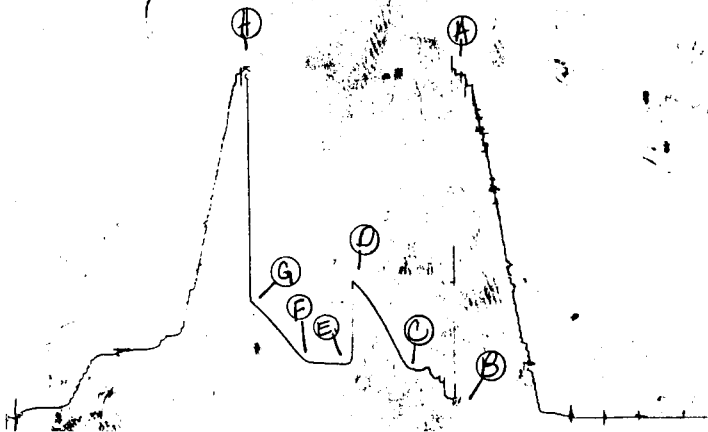
* Pressures questionable due to plugging action.

PRESSURE BREAKDOWN

First Flow Pressure		Initial Shut-In		Second Flow Pressure		Final Shut-In	
Breakdown: <u>6</u> Inc.		Breakdown: <u>15</u> Inc.		Breakdown: <u>6</u> Inc.		Breakdown: <u>15</u> Inc.	
of <u>5</u> mins. and a final inc. of <u>0</u> Min.		of <u>3</u> mins. and a final inc. of <u>0</u> Min.		of <u>5</u> mins. and a final inc. of <u>0</u> Min.		of <u>3</u> mins. and a final inc. of <u>0</u> Min.	
Point Mins.	Press.	Point Minutes	Press.	Point Minutes	Press.	Point Minutes	Press.
P 1	<u>0</u>	<u>0</u>	<u>272</u>	<u>0</u>	<u>313</u>	<u>0</u>	<u>310</u>
P 2	<u>5</u>	<u>3</u>	<u>278</u>	<u>5</u>	<u>302</u>	<u>3</u>	<u>317</u>
P 3	<u>10</u>	<u>6</u>	<u>295</u>	<u>10</u>	<u>303</u>	<u>6</u>	<u>330</u>
P 4	<u>15</u>	<u>9</u>	<u>330</u>	<u>15</u>	<u>305</u>	<u>9</u>	<u>353</u>
P 5	<u>20</u>	<u>12</u>	<u>373</u>	<u>20</u>	<u>306</u>	<u>12</u>	<u>381</u>
P 6	<u>25</u>	<u>15</u>	<u>420</u>	<u>25</u>	<u>308</u>	<u>15</u>	<u>409</u>
P 7	<u>30</u>	<u>18</u>	<u>461</u>	<u>30</u>	<u>310</u>	<u>18</u>	<u>440</u>
P 8	<u>35</u>	<u>21</u>	<u>506</u>	<u>35</u>		<u>21</u>	<u>461</u>
P 9	<u>40</u>	<u>24</u>	<u>547</u>	<u>40</u>		<u>24</u>	<u>487</u>
P10	<u>45</u>	<u>27</u>	<u>585</u>	<u>45</u>		<u>27</u>	<u>515</u>
P11	<u>50</u>	<u>30</u>	<u>619</u>	<u>50</u>		<u>30</u>	<u>538</u>
P12	<u>55</u>	<u>33</u>	<u>651</u>	<u>55</u>		<u>33</u>	<u>566</u>
P13	<u>60</u>	<u>36</u>	<u>683</u>	<u>60</u>		<u>36</u>	<u>587</u>
P14		<u>39</u>	<u>711</u>	<u>65</u>		<u>39</u>	<u>609</u>
P15		<u>42</u>	<u>736</u>	<u>70</u>		<u>42</u>	<u>632</u>
P16		<u>45</u>	<u>760</u>	<u>75</u>		<u>45</u>	<u>651</u>
P17		<u>48</u>		<u>80</u>		<u>48</u>	
P18		<u>51</u>		<u>85</u>		<u>51</u>	
P19		<u>54</u>		<u>90</u>		<u>54</u>	
P20		<u>57</u>				<u>57</u>	
		<u>60</u>				<u>60</u>	

1563

TK# 81665
I



Company Raymond Oil Company, Inc. Lease & Well No. West #1
 Elevation 1870 Kelly Bushing Formation Lansing 'H', 'I' & 'J' Effective Pay - Ft. Ticket No. 8665
 Date 10-30-80 Sec. 24 Twp. 19S Range 14W County Barton State Kansas
 Test Approved by Bob O'Dell Western Representative Cliff Scheuerman

Formation Test No. 4 Interval Tested from 3303 ft. to 3365 ft. Total Depth 3365 ft.
 Packer Depth 3298 ft. Size 6 5/8 in. Packer Depth 3303 ft. Size 6 5/8 in.
 Packer Depth - ft. Size - in. Packer Depth - ft. Size - in.
 Depth of Selective Zone Set -

Top Recorder Depth (Inside) 3353 ft. Recorder Number 1563 Cap. 4200
 Bottom Recorder Depth (Outside) 3356 ft. Recorder Number 1562 Cap. 3900
 Below Straddle Recorder Depth - ft. Recorder Number - Cap. -

Drilling Contractor Duke Drilling Co Inc Rig #2 Drill Collar Length - I. D. - in.
 Mud Type Starch-Salt-Clay Viscosity 44 Weight Pipe Length 729 I. D. 2.7 in.
 Weight 10.7 Water Loss 19.8 cc. Drill Pipe Length 2543 I. D. 3.8 in.
 Chlorides 98,000 P.P.M. Test Tool Length 31 ft. Tool Size 5 1/2 in.
 Jars: Make WTC Serial Number 414 Anchor Length 62 ft. Size 5 1/2 in.
 Did Well Flow? No Reversed Out Yes Surface Choke Size 3/4 in. Bottom Choke Size 3/4 in.
 Main Hole Size 7 7/8 in. Tool Joint Size 4 1/2 in.

Blow: Blow strong throughout test.

Recovered 1713 ft. of gas in pipe
 Recovered 105 ft. of heavy gas cut mud
 Recovered 605 ft. of heavy gas cut and frothy oil
 Recovered ft. of
 Recovered ft. of

Remarks:

Time Set Packer(s) 11:45 ~~A.M.~~ P.M. Time Started Off Bottom 2:15 ~~A.M.~~ P.M. Maximum Temperature 103
 Initial Hydrostatic Pressure 1907 P.S.I. (A)
 Initial Flow Period 30 Minutes (B) 110 P.S.I. to (C) 272 P.S.I.
 Initial Closed In Period 45 Minutes (D) 760 P.S.I.
 Final Flow Period 30 Minutes (E) 313 P.S.I. to (F) 310 P.S.I.
 Final Closed In Period 45 Minutes (G) 651 P.S.I.
 Final Hydrostatic Pressure 1871 P.S.I. (H)

WESTERN TESTING CO., INC.
Pressure Data

Date 10-30-80 Test Ticket No. 8665
 Recorder No. 1563 Capacity 4200 Location 3353 Ft.
 Clock No. - Elevation 1870 Kelly Bushing Well Temperature 103 °F

Point	Pressure		Time Given	Time Computed
A Initial Hydrostatic Mud	<u>1907</u>	P.S.I.	<u>11:45A</u>	<u>M</u>
B First Initial Flow Pressure	<u>110</u>	P.S.I.	<u>30</u>	<u>30</u> Mins.
C First Final Flow Pressure	<u>272</u>	P.S.I.	<u>45</u>	<u>45</u> Mins.
D Initial Closed-in Pressure	<u>760</u>	P.S.I.	<u>30</u>	<u>30</u> Mins.
E Second Initial Flow Pressure	<u>313</u>	P.S.I.	<u>45</u>	<u>45</u> Mins.
F Second Final Flow Pressure	<u>310</u>	P.S.I.	*Pressures questionable due to plugging action.	
G Final Closed-in Pressure	<u>651</u>	P.S.I.		
H Final Hydrostatic Mud	<u>1871</u>	P.S.I.		

PRESSURE BREAKDOWN

Point Mins.	First Flow Pressure	Initial Shut-In	Second Flow Pressure	Final Shut-In			
	Breakdown: <u>6</u> Inc. of <u>5</u> mins. and a final inc. of <u>0</u> Min.	Breakdown: <u>15</u> Inc. of <u>3</u> mins. and a final inc. of <u>0</u> Min.	Breakdown: <u>6</u> Inc. of <u>5</u> mins. and a final inc. of <u>0</u> Min.	Breakdown: <u>15</u> Inc. of <u>3</u> mins. and a final inc. of <u>0</u> Min.			
	Press.	Point Minutes	Press.	Point Minutes	Press.	Point Minutes	Press.
P 1	<u>110</u>	<u>0</u>	<u>272</u>	<u>0</u>	<u>313</u>	<u>0</u>	<u>310</u>
P 2	<u>114</u>	<u>3</u>	<u>278</u>	<u>5</u>	<u>302</u>	<u>3</u>	<u>317</u>
P 3	<u>203*</u>	<u>6</u>	<u>295</u>	<u>10</u>	<u>303</u>	<u>6</u>	<u>330</u>
P 4	<u>222*</u>	<u>9</u>	<u>330</u>	<u>15</u>	<u>305</u>	<u>9</u>	<u>353</u>
P 5	<u>280*</u>	<u>12</u>	<u>373</u>	<u>20</u>	<u>306</u>	<u>12</u>	<u>381</u>
P 6	<u>267</u>	<u>15</u>	<u>420</u>	<u>25</u>	<u>308</u>	<u>15</u>	<u>409</u>
P 7	<u>272</u>	<u>18</u>	<u>461</u>	<u>30</u>	<u>310</u>	<u>18</u>	<u>440</u>
P 8		<u>21</u>	<u>506</u>			<u>21</u>	<u>461</u>
P 9		<u>24</u>	<u>547</u>			<u>24</u>	<u>487</u>
P10		<u>27</u>	<u>585</u>			<u>27</u>	<u>515</u>
P11		<u>30</u>	<u>619</u>			<u>30</u>	<u>538</u>
P12		<u>33</u>	<u>651</u>			<u>33</u>	<u>566</u>
P13		<u>36</u>	<u>683</u>			<u>36</u>	<u>587</u>
P14		<u>39</u>	<u>711</u>			<u>39</u>	<u>609</u>
P15		<u>42</u>	<u>736</u>			<u>42</u>	<u>632</u>
P16		<u>45</u>	<u>760</u>			<u>45</u>	<u>651</u>
P17							
P18							
P19							
P20							



WESTERN TESTING CO., INC.

FORMATION TESTING

TICKET NO:

8666

P. O. BOX 1599 WICHITA, KANSAS 67201 PHONE (316) 262-5861

Elevation 1870 KIB Formation ARBUCKLE Eff. Pay - Ft.

District GREAT BEND Date 10-31-80 Customer Order No. -

COMPANY NAME Raymond Oil Co., Inc. ADDRESS ONE MAIN PLACE WICHITA KS

LEASE AND WELL NO. West #1 COUNTY BARTON STATE KS Sec. 24 Twp. 19S Rge. 14W

Mail Invoice To Co. Name SAME Address No. Copies Requested 5

Mail Charts To Co. Name SAME Address No. Copies Requested 5

Formation Test No. #5 Interval Tested from 3471 ft. to 3480 ft. Total Depth 3480 ft.

Packer Depth 3466 ft. Size 6 1/8 in. Packer Depth 3471 ft. Size 6 5/8 in.

Packer Depth - ft. Size - in. Packer Depth - ft. Size - in.

Depth of Selective Zone Set -

Top Recorder Depth (Inside) 3441 ft. Recorder Number 1563 Cap. 4200

Bottom Recorder Depth (Outside) 3477 ft. Recorder Number 1562 Cap. 3900

Below Straddle Recorder Depth - ft. Recorder Number - Cap. -

Drilling Contractor Duke Dril #2 Rig Drill Collar Length - I. D. - in.

Mud Type STARCH SALT - CHV Viscosity 44 Weight Pipe Length 729 I. D. 2.7 in.

Weight 10.7 Water Loss 19.8 cc. Drill Pipe Length 2704 I. D. 3.8 in.

Chlorides 98,000 P.P.M. Test Tool Length 38 ft. Tool Size 5 1/2 in.

Jars: Make 13000 MNC Serial Number 414 Anchor Length 9 ft. Size 5 1/2 in.

Did Well Flow? NO Reversed Out NO Surface Choke Size 3/4 in. Bottom Choke Size 3/4 in.

Main Hole Size 7 1/4 in. Tool Joint Size 4 1/2 in.

Blow: 1st Blow Strong off bottom of Bucket for 10 MIN THEN DECREASED TO W/29 K BLOW - 2nd - NO BLOW Flushed Twice.

Recovered 248 ft. of GAS CUT MUD 50,000 CHLORIDES

Recovered 397 ft. of Gas cut Salt Water 57000 CHLORIDES

Recovered - ft. of -

Recovered - ft. of Miss Run Plugged Tool

Recovered - ft. of -

Remarks: Tool slid 6' to bottom - Tool PLUGGED NO FLOW Pressures - Plugged with Cuttings

Time On Location 7:00 A.M. Time Pick Up Tool 10:00 A.M. Time Off Location 5:30 P.M.

Time Set Packer(s) 11:30 A.M. Time Started Off Bottom 200 P.M. Maximum Temperature 105°

Initial Hydrostatic Pressure 1892(A) 1881 P.S.I.

Initial Flow Period Minutes 30 (B) P.S.I. to (C) - P.S.I.

Initial Closed In Period Minutes 45 (D) 1154 P.S.I.

Final Flow Period Minutes 30 (E) P.S.I. to (F) - P.S.I.

Final Closed In Period Minutes 45 (G) 1194 P.S.I.

Final Hydrostatic Pressure 1869 (H) 1871 P.S.I.

COMPANY TERMS

Western Testing Co., Inc. shall not be liable for damages of any kind to the property or personnel of the one for whom a test is made or for any loss suffered or sustained directly or indirectly through the use of its equipment, of its statements or opinion concerning the results of any test. Tools lost or damaged in the hole shall be paid at cost by the party for whom the test is made.

All charges subject to 12% interest after 60 days from date of invoice. Any expense incurred for collection will be added to the original amount.

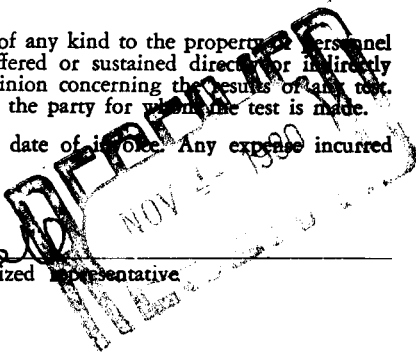
Test Approved By Robert E O'D... Signature of Customer or his authorized representative

Western Representative Cliff Schuerman

Thank You!

FIELD INVOICE

Table with 2 columns: Item and Amount. Items include Open Hole Test, Misrun, Straddle Test, Jars, Selective Zone, Safety Joint, Standby, Evaluation, Extra Packer, Circ. Sub., Mileage, Fluid Sampler, Extra Charts, Insurance, and TOTAL.



Company Raymond Oil Company, Inc. Lease & Well No. West #1
 Elevation 1870 Kelly Bushing Arbuckle Formation Arbuckle Effective Pay -- Ft. Ticket No. 8666
 Date 10/31/80 Sec. 24 Twp. 19S Range 14W County Barton State Kansas
 Test Approved by Robert E. O'Dell Western Representative Cliff Scheuerman

Formation Test No. 5 Interval Tested from 3471 ft. to 3480 ft. Total Depth 3480 ft.
 Packer Depth 3466 ft. Size 6 5/8 in. Packer Depth 3471 ft. Size 6 5/8 in.
 Packer Depth - ft. Size - in. Packer Depth - ft. Size - in.
 Depth of Selective Zone Set -

Top Recorder Depth (Inside) 3441 ft. Recorder Number 1563 Cap. 4200
 Bottom Recorder Depth (Outside) 3477 ft. Recorder Number 1562 Cap. 3900
 Below Straddle Recorder Depth - ft. Recorder Number - Cap. -

Drilling Contractor Duke Drlg. Rig #2 Drill Collar Length - I. D. - in.
 Mud Type starch-salt gel Viscosity 44 Weight Pipe Length 729 I. D. 2.7 in.
 Weight 10.7 Water Loss 19.8 cc. Drill Pipe Length 2704 I. D. 3.8 in.
 Chlorides 98,000 P.P.M. Test Tool Length 38 ft. Tool Size 5 1/2 in.
 Jars: Make WTC Serial Number 414 Anchor Length 9 ft. Size 5 1/2 in.
 Did Well Flow? No Reversed Out No Surface Choke Size 3/4 in. Bottom Choke Size 3/4 in.
 Main Hole Size 7 7/8 in. Tool Joint Size 4 1/2 in.

Blow: Initial flow period strong off bottom of bucket for ten minutes then decrease to weak blow fianl flow period. No blow; flushed twice.

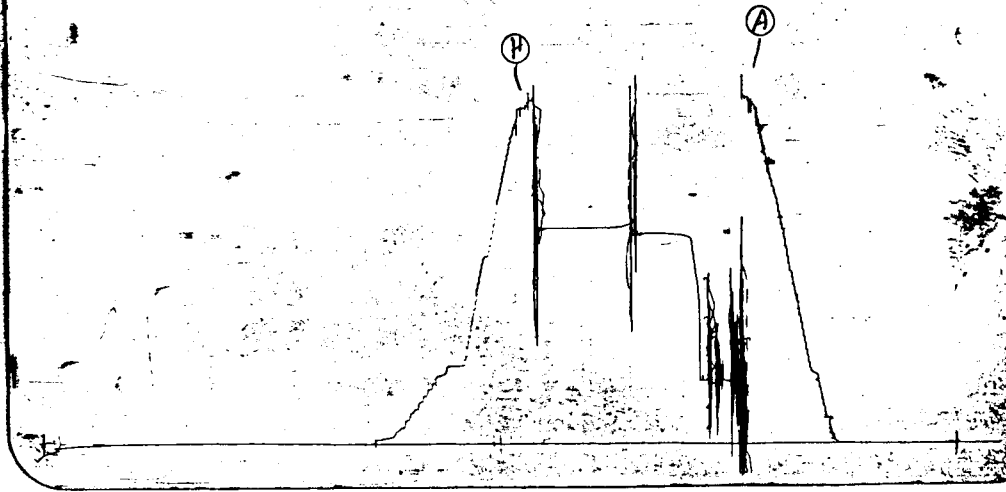
Recovered 248 ft. of gas cut mud 80,000 ppm chlorides
 Recovered 397 ft. of gas cut salt water 57,000 ppm chlorides
 Recovered - ft. of -
 Recovered - ft. of - MISRUN PLUGGED TOOL
 Recovered - ft. of -

Remarks: TOOL SLID SIX FEET TO BOTTOM: TOOL PLUGGED: NO FLOW PRESSURES: PLUGGED WITH CUTTINGS.

Time Set Packer(s) 11:30 A.M. Time Started Off Bottom 2:00 P.M. Maximum Temperature 105°
 Initial Hydrostatic Pressure (A) 1892 P.S.I.
 Initial Flow Period Minutes - (B) - P.S.I. to (C) - P.S.I.
 Initial Closed In Period Minutes - (D) - P.S.I.
 Final Flow Period Minutes - (E) - P.S.I. to (F) - P.S.I.
 Final Closed In Period Minutes - (G) - P.S.I.
 Final Hydrostatic Pressure (H) 1869 P.S.I.

SKT # 8666

I.



1562

SKT # 8666

0

