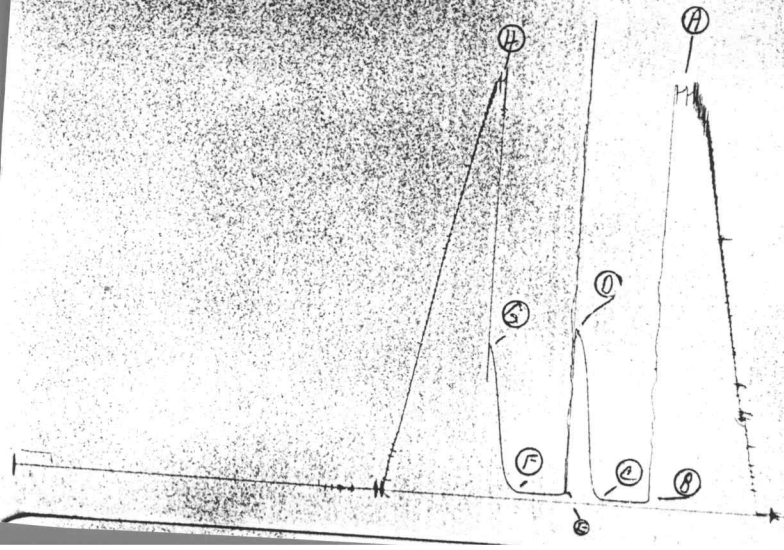


6233

KT 13849

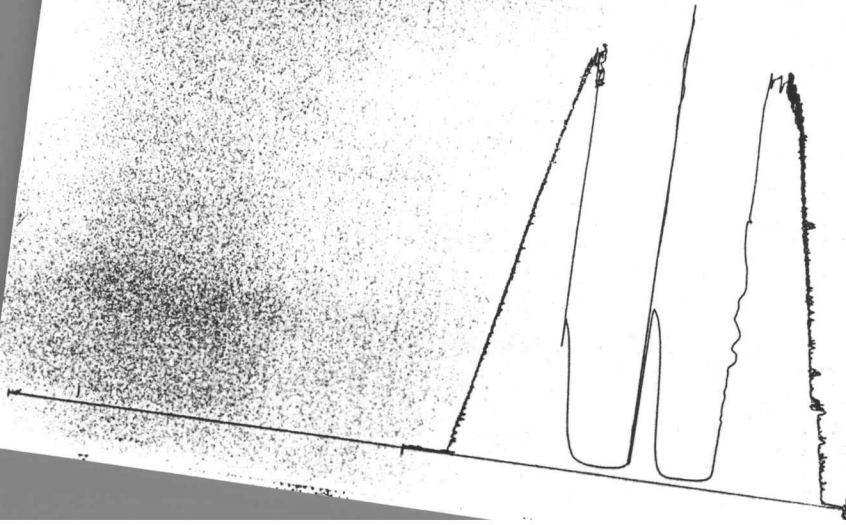
I.



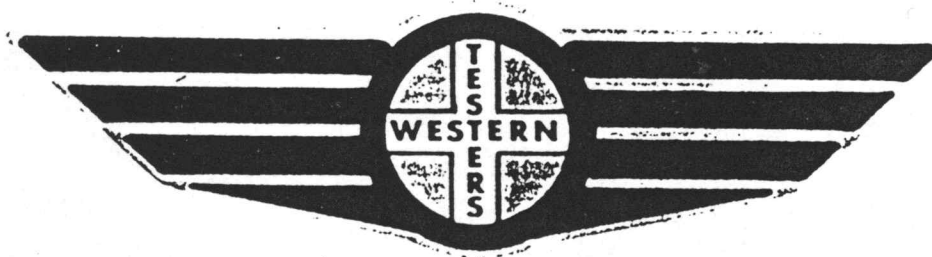
1346

K+ 15849

0



FORMATION TEST REPORT



Home Office:

Wichita, Kansas 67201

P.O. Box 1599

Phone (316) 262-5861

COMPANY ENERGY EXPLORATION, INC.

LEASE & WELL NO.

THOMAS #1

SEC. 17

TWP. 19S

RGF.

28W TEST NO. 1

DATE 11/16/88

WESTERN TESTING CO. INC.
SUBSURFACE PRESSURE SURVEY

DATE : 11/16/88
CUSTOMER : ENERGY EXPLORATION INC.
WELL : 1 TEST: 1
ELEVATION : 2785 KB
SECTION : 17
RANGE : 28W COUNTY : LANE
GAUGE SN# : 6233 RANGE : 4000
TICKET : 13849
LEASE : THOMAS
GEOLOGIST : ROBERTS
FORMATION : L-KANS.CITY I
TOWNSHIP : 19S
STATE : KANSAS
CLOCK : 12

INTERVAL FROM : 4222 TO : 4250 TOTAL DEPTH : 4250
DEPTH OF SELECTIVE ZONE :
PACKER DEPTH : 4217 SIZE : 6.75
PACKER DEPTH : 4222 SIZE : 6.75
PACKER DEPTH : SIZE :
PACKER DEPTH : SIZE :

DRILLING CON. : ABERCROMBIE RIG 4
MUD TYPE : DAPAC VISCOSITY : 47
WEIGHT : 9.8 WATER LOSS (CC) : 10.4
CHLORIDES (PPM) : 6000
JARS-MAKE : NO SERIAL NUMBER :
DID WELL FLOW ? : NO REVERSED OUT ? : NO

DRILL COLLAR LENGTH : 0 FT I.D. inch : 0.00
WEIGHT PIPE LENGTH : 498 FT I.D. inch : 3.20
DRILL PIPE LENGTH : 3704 FT I.D. inch : 3.80
TEST TOOL LENGTH : 20 FT TOOL SIZE : 5.50
ANCHOR LENGTH : 28 FT ANCHOR SIZE : 5.50
SURFACE CHOKE SIZE : .75 IN BOTTOM CHOKE SIZE : .75
MAIN HOLE SIZE : 7.875 IN TOOL JOINT SIZE : 4.5XH

BLOW COMMENT #1 : INITIAL FLOW PERIOD WEAK BLOW - DIED IN
BLOW COMMENT #2 : 20 MINUTES.
BLOW COMMENT #3 : FINAL FLOW PERIOD NO BLOW.
BLOW COMMENT #4 :

RECOVERED : 15 FT OF: MUD-SCUM OF OIL ON TOP OF TOOL

Total Barrels Fluid = 0.15
Total Fluid Prod Rate = 3.58 BFPD
Indicated Wtr Rate = 0.36 BWPD

REMARK 1 :
REMARK 2 : FLUSHED TOOL ON FINAL FLOW PERIOD.
REMARK 3 :
REMARK 4 :

SET PACKER(S) :	5:20 PM	TIME STARTED OFF BOTTOM :	7:20 PM
WELL TEMPERATURE :	121		
INITIAL HYDROSTATIC PRESSURE		(A)	2157
INITIAL FLOW PERIOD MIN:	30	(B)	30 PSI TO (C) : 30
INITIAL CLOSED IN PERIOD MIN:	33	(D)	919
FINAL FLOW PERIOD MIN:	30	(E)	52 PSI TO (F) : 41
FINAL CLOSED IN PERIOD MIN:	33	(G)	813
FINAL HYDROSTATIC PRESSURE		(H)	2157

WESTERN TESTING CO. INC.
WICHITA-KANSAS

Pressure Transient Report

COMPANY : ENERGY EXPLORATION INC.
RIG : LANE-KANSAS
FIELD : THOMAS
WELL : 1
DATE : 11/16/88
GAUGE NO : 6233

OPERATIONAL COMMENTS

FLUSHED TOOL ON FINAL FLOW PERIOD.

COMPANY : ENERGY EXPLORATION INC.
 WELL : 1
 GAUGE # : 6233
 DATE : 16/11/88

FIELD : THOMAS
 JOB # : 13849
 DEPTH : 4250
 TEST :

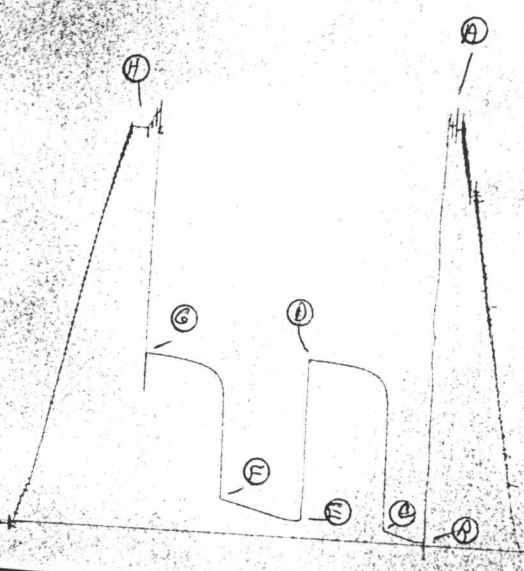
DATA No.	REAL TIME HR:MN:SS	ELAPSE TIME DELTA HOURS	PRESSURE PSIG	TEMP DEG F	DELTA P Pi-P(i-1)
INITIAL FLOW PERIOD					
2	5:20:0	0.000	30.000	121.00	0.000
3	5:24:59	0.083	30.000	121.00	0.000
4	5:30:0	0.167	30.000	121.00	0.000
5	5:35:0	0.250	30.000	121.00	0.000
6	5:39:59	0.333	30.000	121.00	0.000
7	5:45:0	0.417	30.000	121.00	0.000
8	5:50:0	0.500	30.000	121.00	0.000
INITIAL SHUT-IN PERIOD					
9	5:53:0	0.550	30.000	121.00	0.000
10	5:56:0	0.600	36.000	121.00	6.000
11	5:59:0	0.650	56.000	121.00	20.000
12	6:2:0	0.700	114.000	121.00	58.000
13	6:5:0	0.750	268.000	121.00	154.000
14	6:8:0	0.800	467.000	121.00	199.000
15	6:11:0	0.850	647.000	121.00	180.000
16	6:14:0	0.900	783.000	121.00	136.000
17	6:17:0	0.950	856.000	121.00	73.000
18	6:20:0	1.000	892.000	121.00	36.000
19	6:23:0	1.050	919.000	121.00	27.000
FINAL FLOW PERIOD					
20	6:24:0	1.067	52.000	121.00	-867.000
21	6:27:59	1.133	42.000	121.00	-10.000
22	6:33:0	1.217	41.000	121.00	-1.000
23	6:38:0	1.300	41.000	121.00	0.000
24	6:42:59	1.383	41.000	121.00	0.000
25	6:48:0	1.467	41.000	121.00	0.000
26	6:53:0	1.550	41.000	121.00	0.000
FINAL SHUT-IN PERIOD					
27	6:55:59	1.600	41.000	121.00	0.000
28	6:59:0	1.650	43.000	121.00	2.000
29	7:1:59	1.700	53.000	121.00	10.000
30	7:5:0	1.750	73.000	121.00	20.000
31	7:8:0	1.800	114.000	121.00	41.000
32	7:11:0	1.850	204.000	121.00	90.000
33	7:14:0	1.900	346.000	121.00	142.000
34	7:17:0	1.950	513.000	121.00	167.000
35	7:20:0	2.000	652.000	121.00	139.000
36	7:23:0	2.050	747.000	121.00	95.000
37	7:26:0	2.100	813.000	121.00	66.000

WESTERN TESTING CO. INC.

6837

KT 13850

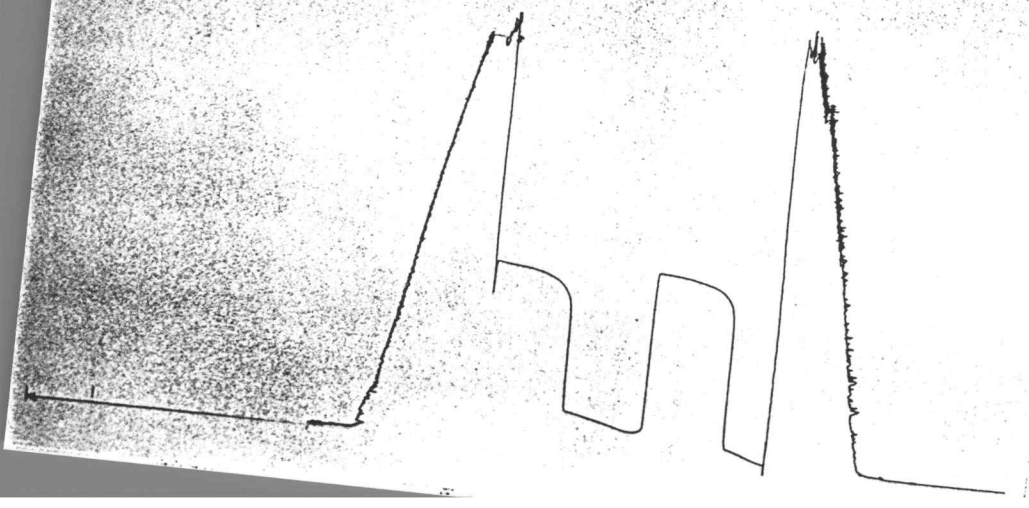
I



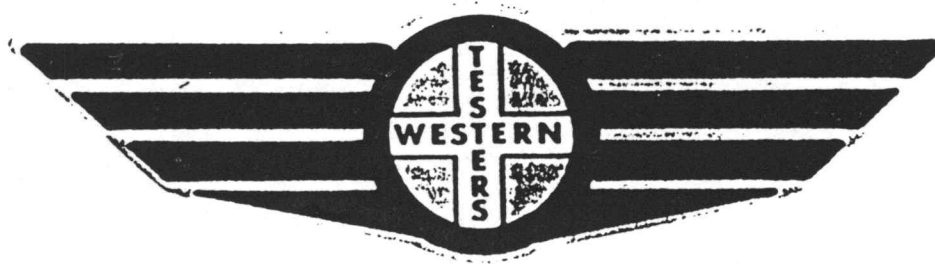
19/6/60

KA B850

0



FORMATION TEST REPORT



Home Office:

Wichita, Kansas 67201

P.O. Box 1599

Phone (316) 262-5861

COMPANY ENERGY EXPLORATION, INC. LEASE & WELL NO. THOMAS #1 SEC. 17 TWP. 19S RGE. 28W TEST NO. 2 DATE 11/17/88

WESTERN TESTING CO. INC.
SUBSURFACE PRESSURE SURVEY

DATE : 11/17/88 TICKET : 13850
CUSTOMER : ENERGY EXPLORATION INC. LEASE : THOMAS
WELL : 1 TEST: 2 GEOLOGIST : ROBERTS
ELEVATION : 2785 KB FORMATION : L-KANS CITY K
SECTION : 17 TOWNSHIP : 19S
RANGE : 28W COUNTY : LANE STATE : KANSAS
GAUGE SN# : 6233 RANGE : 4000 CLOCK : 12

INTERVAL FROM : 4286 TO : 4306 TOTAL DEPTH : 4306
DEPTH OF SELECTIVE ZONE :
PACKER DEPTH : 4281 SIZE : 6.75
PACKER DEPTH : 4286 SIZE : 6.75
PACKER DEPTH : SIZE :
PACKER DEPTH : SIZE :

DRILLING CON. : ABERCROMBIE RIG 4
MUD TYPE : DAPAC VISCOSITY : 55
WEIGHT : 9.4 WATER LOSS (CC) : 10
CHLORIDES (PPM) : 5000
JARS-MAKE : NO SERIAL NUMBER : NO
DID WELL FLOW ? : NO REVERSED OUT ? : NO

DRILL COLLAR LENGTH : 0 FT I.D. inch : 0.00
WEIGHT PIPE LENGTH : 498 FT I.D. inch : 3.20
DRILL PIPE LENGTH : 3768 FT I.D. inch : 3.80
TEST TOOL LENGTH : 20 FT TOOL SIZE : 5.50
ANCHOR LENGTH : 20 FT ANCHOR SIZE : 5.50
SURFACE CHOKE SIZE : .75 IN BOTTOM CHOKE SIZE : .75
MAIN HOLE SIZE : 7.875 IN TOOL JOINT SIZE : 4.5XH

BLOW COMMENT #1 : INITIAL FLOW PERIOD FAIR BLOW INCREASING
BLOW COMMENT #2 : TO 6 INCHES IN WATER.
BLOW COMMENT #3 : FINAL FLOW PERIOD FAIR BLOW INCREASED TO
BLOW COMMENT #4 : STRONG - 8 INCHES IN WATER.

WESTERN TESTING CO. INC.
WICHITA-KANSAS

Pressure Transient Report

COMPANY : ENERGY EXPLORATION INC.
RIG : LANE-KANSAS
FIELD : THOMAS
WELL : 1
DATE : 11/17/88
GAUGE NO : 6233

OPERATIONAL COMMENTS

CHLORIDES 28000 PPM

COMPANY : ENERGY EXPLORATION INC.
 WELL : 1
 GAUGE # : 6233
 DATE : 17/11/88

FIELD : THOMAS
 JOB # : 13850
 DEPTH : 4306
 TEST :

DATA No.	REAL TIME HR:MN:SS	ELAPSE TIME DELTA HOURS	PRESSURE PSIG	TEMP DEG F	DELTA P Pi-P(i-1)
INITIAL FLOW PERIOD					
2	8:20:0	0.000	23.000	121.00	0.000
3	8:24:59	0.083	23.000	121.00	0.000
4	8:30:0	0.167	28.000	121.00	5.000
5	8:35:0	0.250	40.000	121.00	12.000
6	8:39:59	0.333	52.000	121.00	12.000
7	8:45:0	0.417	61.000	121.00	9.000
8	8:50:0	0.500	73.000	121.00	12.000
INITIAL SHUT-IN PERIOD					
9	8:53:0	0.550	676.000	121.00	603.000
10	8:56:0	0.600	830.000	121.00	154.000
11	8:59:0	0.650	869.000	121.00	39.000
12	9:02:0	0.700	887.000	121.00	18.000
13	9:05:0	0.750	900.000	121.00	13.000
14	9:08:0	0.800	909.000	121.00	9.000
15	9:11:0	0.850	917.000	121.00	8.000
16	9:14:0	0.900	924.000	121.00	7.000
17	9:17:0	0.950	928.000	121.00	4.000
18	9:20:0	1.000	932.000	121.00	4.000
19	9:23:0	1.050	935.000	121.00	3.000
20	9:26:0	1.100	938.000	121.00	3.000
21	9:29:0	1.150	941.000	121.00	3.000
22	9:32:0	1.200	943.000	121.00	2.000
23	9:35:0	1.250	946.000	121.00	3.000
24	9:38:0	1.300	949.000	121.00	3.000
25	9:41:0	1.350	951.000	121.00	2.000
26	9:44:0	1.400	952.000	121.00	1.000
27	9:47:0	1.450	953.000	121.00	1.000
28	9:50:0	1.500	954.000	121.00	1.000
29	9:53:0	1.550	955.000	121.00	1.000
FINAL FLOW PERIOD					
30	9:54:0	1.567	103.000	121.00	-852.000
31	9:57:59	1.633	103.000	121.00	0.000
32	10:03:0	1.717	105.000	121.00	2.000
33	10:08:0	1.800	110.000	121.00	5.000
34	10:12:59	1.883	121.000	121.00	11.000
35	10:18:0	1.967	132.000	121.00	11.000
36	10:23:0	2.050	139.000	121.00	7.000
37	10:27:59	2.133	149.000	121.00	10.000
38	10:33:0	2.217	159.000	121.00	10.000
39	10:38:0	2.300	169.000	121.00	10.000
40	10:42:59	2.383	178.000	121.00	9.000
41	10:48:0	2.467	187.000	121.00	9.000
42	10:53:0	2.550	196.000	121.00	9.000
FINAL SHUT-IN PERIOD					
43	10:56:0	2.600	772.000	121.00	576.000
44	10:58:59	2.650	833.000	121.00	61.000
45	11:02:0	2.700	858.000	121.00	25.000
46	11:05:0	2.750	875.000	121.00	17.000
47	11:08:0	2.800	886.000	121.00	11.000
48	11:11:0	2.850	894.000	121.00	8.000

COMPANY : ENERGY EXPLORATION INC.
WELL : 1
GAUGE # : 6233
DATE : 17/11/88

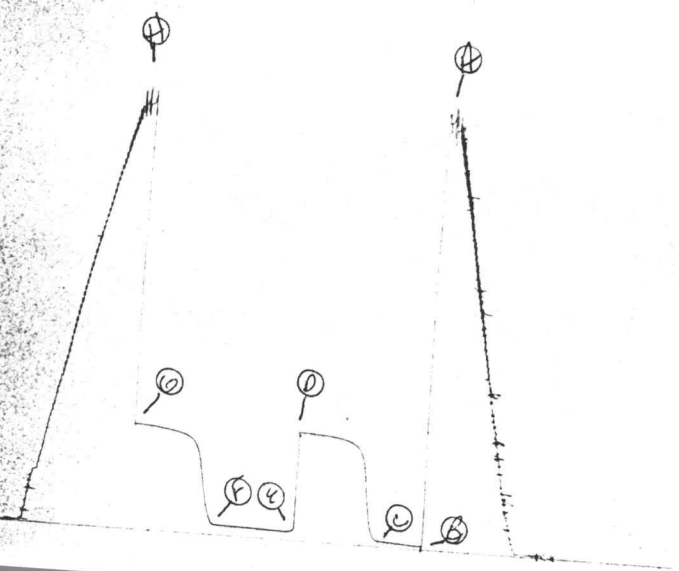
FIELD : THOMAS
JOB # : 13850
DEPTH : 4306
TEST :

DATA No.	REAL TIME HR:MN:SS	ELAPSE TIME DELTA HOURS	PRESSURE PSIG	TEMP DEG F	DELTA P Pi-P(i-1)
49	11:13:59	2.900	901.000	121.00	7.000
50	11:17: 0	2.950	907.000	121.00	6.000
51	11:20: 0	3.000	911.000	121.00	4.000
52	11:23: 0	3.050	916.000	121.00	5.000
53	11:26: 0	3.100	919.000	121.00	3.000
54	11:29: 0	3.150	924.000	121.00	5.000
55	11:31:59	3.200	926.000	121.00	2.000
56	11:35: 0	3.250	930.000	121.00	4.000
57	11:38: 0	3.300	932.000	121.00	2.000
58	11:41: 0	3.350	934.000	121.00	2.000
59	11:44: 0	3.400	937.000	121.00	3.000
60	11:46:59	3.450	940.000	121.00	3.000
61	11:50: 0	3.500	941.000	121.00	1.000
62	11:53: 0	3.550	942.000	121.00	1.000

WESTERN TESTING CO. INC.

6233

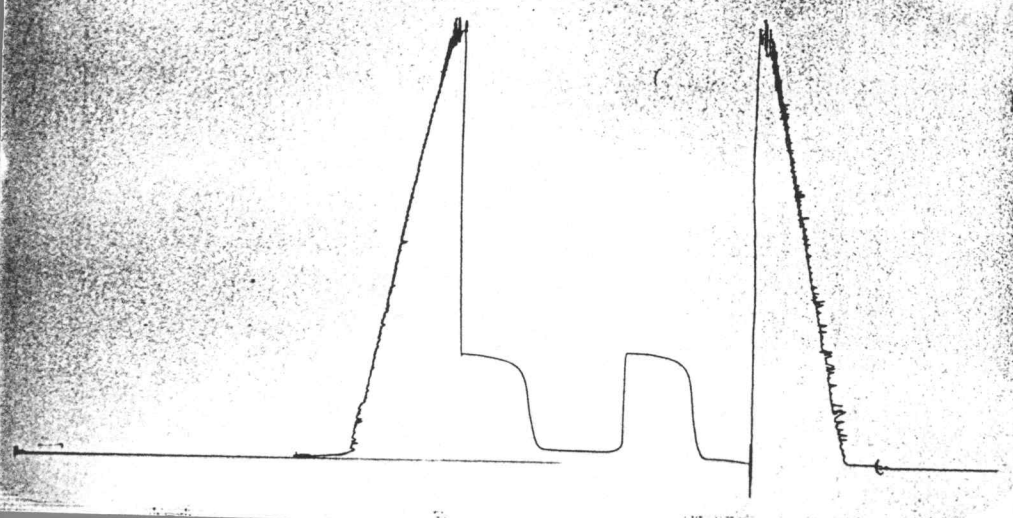
TKT # 12676
I



13400

TK # 12676

○



WESTERN TESTING CO. INC.
WICHITA-KANSAS

WELL TEST ANALYSIS REPORT
HORNER METHOD
SHUTIN No. 2

COMPANY. ENERGY EXPLORATION INC.
DATE 11-18-88
FIELD. THOMAS
WELL #1
AREA LANE-KANSAS
JOB NUMBER 12676
GAUGE NUMBER . . . 6233
GAUGE DEPTH. . . . 4338
ZONE TESTED. . . . 4323-4338

PHASE : OIL FUNCTION : PRESSURE

=====I=N=P=U=T====D=A=T=A====S=U=M=M=A=R=Y=====

THICKNESS.	H	5.0000E+00	Feet
POROSITY	POR	1.6000E-01	Frac
VISCOSITY.	U	2.1000E+00	Cp
FORMATION VOLUME FACTOR.	B	1.0000E+00	Rb/stb
TOTAL COMPRESSIBILITY.	Ct	1.0500E-05	Psi^-1
WELLBORE RADIUS.	Rw	5.2000E-01	Feet
DRAINAGE RADIUS.	Re	7.5000E+02	Feet
RESERVOIR TEMPERATURE.	T	1.2100E+02	Deg F
GRAVITY OF FLUID	G	3.2000E+01	
PVT EVALUATION PRESSURE.	P	0.0000E+00	Psig
PRESSURE AT SHUT-IN.	Pwf	5.5000E+01	Psig
FINAL RECORDED PRESSURE.	Ps	5.5600E+02	Psig
PRODUCTION RATE.	Q	1.5080E+01	Bbl/day
TOTAL FLOW TIME.	T	1.5833E+00	Hours

=====R=E=G=R=E=S=S=I=O=N====R=E=S=U=L=T=S=====

LEAST SQUARE RESULTS OVER THE INTERVAL :
FROM 0 TO 0

SLOPE OF THE LINE.	9.2296E+01	psi/cycle
FALSE PRESSURE, PSTAR.	5.8123E+02	psi
PRESSURE AT 1 HOUR	5.5344E+02	psi

=====A=N=A=L=Y=S=I=S====R=E=S=U=L=T=S=====

TRANSMISSIBILTY.Kh/u	2.6567E+01	md-ft/cp
FLOW CAPACITY.Kh	5.5790E+01	md-ft
PERMEABILITY to PHASE.	K	1.1158E+01	md
DAMAGE RATIODr	1.4521E+00	
RADIUS OF INVESTIGATION.Rinv	7.2679E+01	ft
SKIN FACTOR.	S	2.0436E+00	
AVERAGE PRESSUREPbar	5.8085E+02	psig
DIMENSIONLESS TIMETda	7.4810E-04	
MATTHEWS-BRONS-HAZEBROEKPDmbh	9.4009E-03	

WESTERN TESTING CO. INC.
WICHITA-KANSAS

Pressure Transient Report

COMPANY : ENERGY EXPLORATION INC.
RIG : LANE-KANSAS
FIELD : THOMAS
WELL : #1
DATE : 11-18-88
GAUGE NO : 6233
TEST : SHUTIN 2

COMPANY : ENERGY EXPLORATION INC.
 WELL : #1
 GAUGE # : 6233
 DATE : 18/11/88
 Comment : SHUTIN 2
 Horner T: 1 Hours

FIELD : THOMAS
 JOB # : 12676
 DEPTH : 4338
 TEST :

DATA No.	REAL TIME HR:MM:SS	EVENT TIME DELTA HOURS	PRESSURE PSIG	TEMP DEG F	HORNER (T+dt)/dt	DELTA P PSIG
42	12:33:00	0.000	55.000	121.00	0.0000	0.000
43	12:37:59	0.083	55.000	121.00	13.0048	0.000
44	12:40:59	0.133	69.000	121.00	8.5019	14.000
45	12:43:59	0.183	129.000	121.00	6.4555	74.000
46	12:46:59	0.233	224.000	121.00	5.2863	169.000
47	12:49:59	0.283	363.000	121.00	4.5298	308.000
48	12:52:59	0.333	444.000	121.00	4.0003	389.000
49	12:55:59	0.383	485.000	121.00	3.6089	430.000
50	12:58:59	0.433	506.000	121.00	3.3079	451.000
51	13:01:59	0.483	518.000	121.00	3.0691	463.000
52	13:04:59	0.533	525.000	121.00	2.8751	470.000
53	13:07:59	0.583	530.000	121.00	2.7144	475.000
54	13:10:59	0.633	535.000	121.00	2.5790	480.000
55	13:13:59	0.683	538.000	121.00	2.4635	483.000
56	13:16:59	0.733	542.000	121.00	2.3637	487.000
57	13:19:59	0.783	545.000	121.00	2.2767	490.000
58	13:22:59	0.833	549.000	121.00	2.2000	494.000
59	13:25:59	0.883	551.000	121.00	2.1321	496.000
60	13:28:59	0.933	552.000	121.00	2.0715	497.000
61	13:31:59	0.983	553.000	121.00	2.0170	498.000
62	13:34:59	1.033	554.000	121.00	1.9678	499.000
63	13:37:59	1.083	555.000	121.00	1.9231	500.000
64	13:40:59	1.133	556.000	121.00	1.8824	501.000

WESTERN TESTING CO. INC.

Pressure , Psig

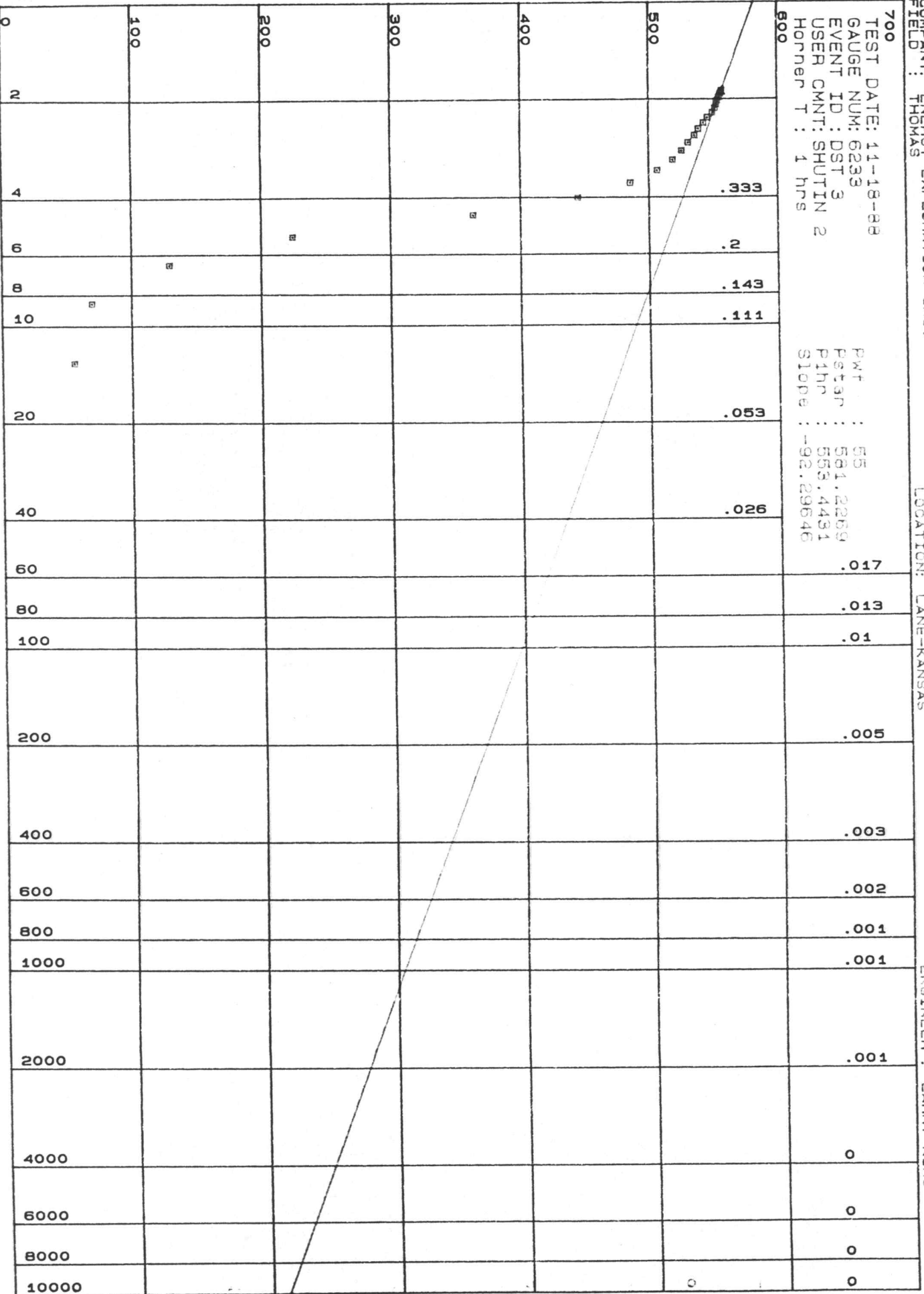
COMPANY: ENERGY EXPLORATION INC.
 FIELD: THOMAS

LOCATION: #1 LANE-KANSAS

PROCESSED: 11-18-1989
 ENGINEER: LARRY KING

700
 TEST DATE: 11-18-88
 GAUGE NUM: 6233
 EVENT ID : DST 3
 USER CMNT: SHUTIN 2
 Horner T : 1 hrs

PWT : 55
 Pstgr : 581.2259
 P1hr : 555.4451
 Slope : -92.29646



Job No. 12676
 WESTERN TESTING CO. INC.

Horner Ratio, (T+dt) / dt

RES-TRAN

WESTERN TESTING CO. INC.
WICHITA-KANSAS

Pressure Transient Report

COMPANY : ENERGY EXPLORATION INC.
RIG : LANE-KANSAS
FIELD : THOMAS
WELL : #1
DATE : 11-18-88
GAUGE NO : 6233
TEST : SHUTIN 1

COMPANY : ENERGY EXPLORATION INC.
 WELL : #1
 GAUGE # : 6233
 DATE : 18/11/88
 Comment : SHUTIN 1
 Horner T: .5833333 Hours

FIELD : THOMAS
 JOB # : 12676
 DEPTH : 4338
 TEST :

DATA No.	REAL TIME HR:MM:SS	EVENT TIME DELTA HOURS	PRESSURE PSIG	TEMP DEG F	HORNER (T+dt)/dt	DELTA P PSIG
8	10:30:0	0.000	30.000	121.00	0.0000	0.000
9	10:34:59	0.083	30.000	121.00	8.0028	0.000
10	10:37:59	0.133	36.000	121.00	5.3761	6.000
11	10:40:59	0.183	66.000	121.00	4.1824	36.000
12	10:43:59	0.233	154.000	121.00	3.5004	124.000
13	10:46:59	0.283	331.000	121.00	3.0591	301.000
14	10:49:59	0.333	461.000	121.00	2.7502	431.000
15	10:52:59	0.383	508.000	121.00	2.5219	478.000
16	10:55:59	0.433	528.000	121.00	2.3463	498.000
17	10:58:59	0.483	541.000	121.00	2.2070	511.000
18	11:01:59	0.533	549.000	121.00	2.0938	519.000
19	11:04:59	0.583	554.000	121.00	2.0001	524.000
20	11:07:59	0.633	560.000	121.00	1.9211	530.000
21	11:10:59	0.683	562.000	121.00	1.8537	532.000
22	11:13:59	0.733	565.000	121.00	1.7955	535.000
23	11:16:59	0.783	567.000	121.00	1.7447	537.000
24	11:19:59	0.833	568.000	121.00	1.7000	538.000
25	11:22:59	0.883	569.000	121.00	1.6604	539.000
26	11:25:59	0.933	570.000	121.00	1.6250	540.000
27	11:28:59	0.983	571.000	121.00	1.5932	541.000
28	11:31:59	1.033	572.000	121.00	1.5645	542.000
29	11:34:59	1.083	573.000	121.00	1.5385	543.000
30	11:37:59	1.133	574.000	121.00	1.5147	544.000

WESTERN TESTING CO. INC.

Pressure , Psig

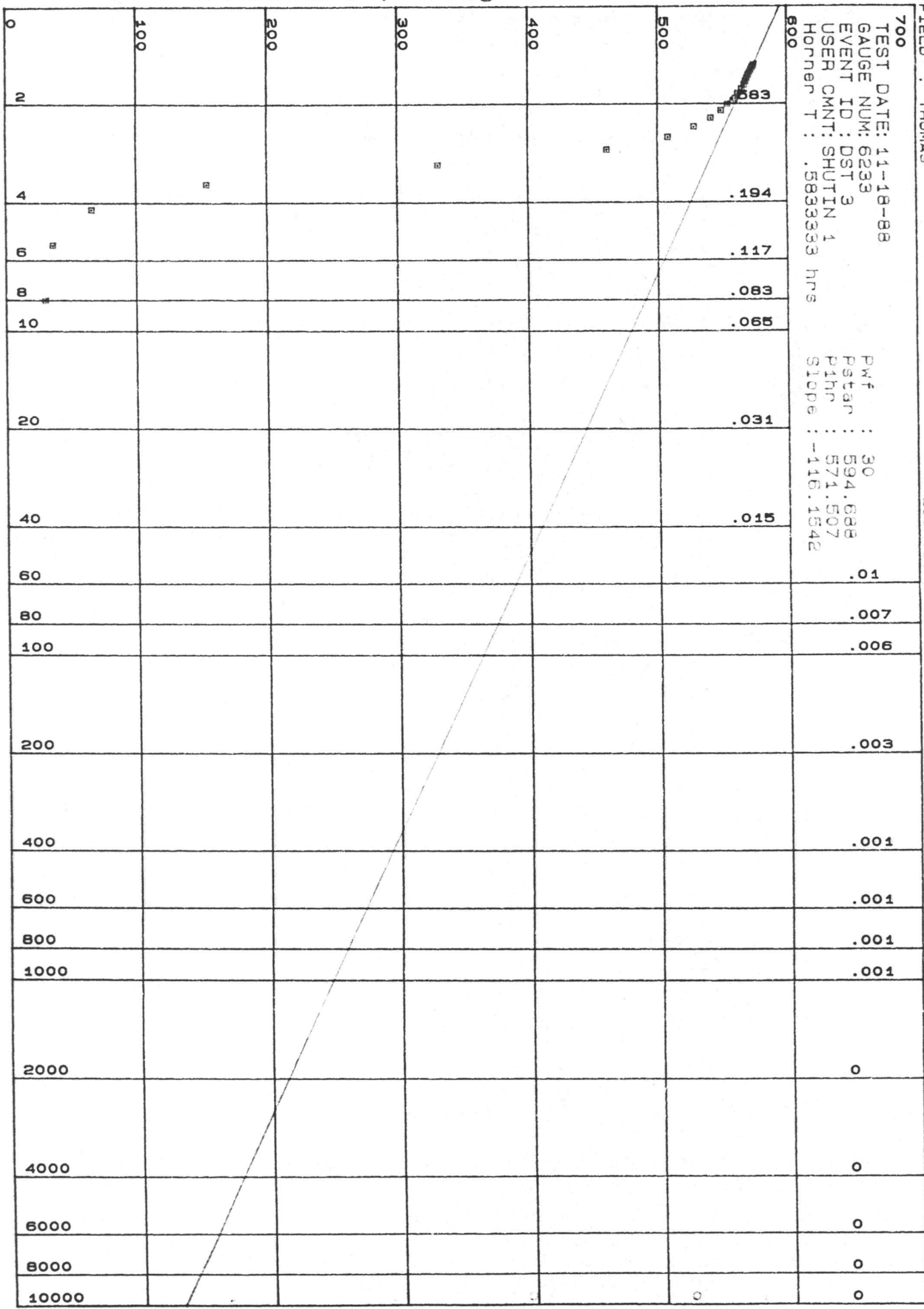
COMPANY: ENERGY EXPLORATION INC.
 FIELD: THOMAS

WELL# : #1
 LOCATION: LANE-KANSAS

PROCESSED: 11-18-88
 ENGINEER: LARRY KING

700
 TEST DATE: 11-18-88
 GAUGE NUM: 6233
 EVENT ID: DST 3
 USER CMNT: SHUTIN 1
 Horner T : .5833333 hrs

Pwf : 30
 Pstar : 594.688
 P1hr : 571.507
 Slope : -116.1542

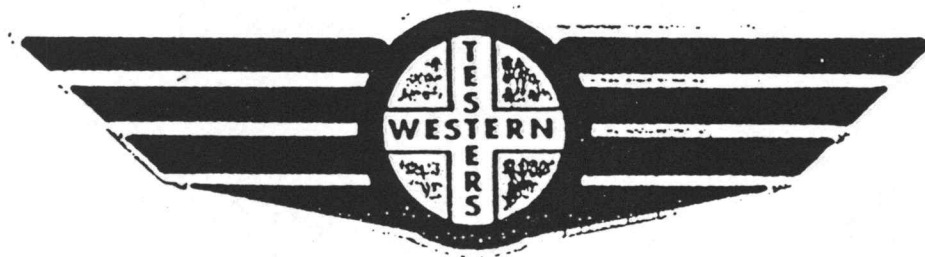


Job No. 12676
 WESTERN TESTING CO. INC.

Horner Ratio, (T+dt) / dt

RES-TRAN

FORMATION TEST REPORT



Home Office:

Wichita, Kansas 67201

P.O. Box 1599

Phone (316) 262-5861

COMPANY

ENERGY EXPLORATION INC.

LEASE & WELL NO.

THOMAS #1

SEC. 17

TWP. 19S

RGE. 28W

TEST NO.

3

DATE

11/17/88

WESTERN TESTING CO. INC.
SUBSURFACE PRESSURE SURVEY

DATE : 11-18-88
CUSTOMER : ENERGY EXPLORATION INC.
WELL : #1 TEST: 3
ELEVATION : 2785
SECTION : 17
RANGE : 28 COUNTY : LANE
GAUGE SN# : 6233 RANGE : 4000
TICKET : 12676
LEASE : THOMAS
GEOLOGIST : K. ROBERTS
FORMATION : L. K.C.-L ZONE
TOWNSHIP : 19S
STATE : KANSAS
CLOCK : 12

INTERVAL FROM : 4323 TO : 4338 TOTAL DEPTH : 4338
DEPTH OF SELECTIVE ZONE :
PACKER DEPTH : 4318 SIZE : 6.75
PACKER DEPTH : 4323 SIZE : 6.75
PACKER DEPTH : SIZE :
PACKER DEPTH : SIZE :

DRILLING CON. : ABERCROMBIE #4
MUD TYPE : DAPAC VISCOSITY : 55
WEIGHT : 9.4 WATER LOSS (CC) : 10
CHLORIDES (PPM) : 3000
JARS-MAKE : SERIAL NUMBER :
DID WELL FLOW ? : REVERSED OUT ? :

DRILL COLLAR LENGTH : 0 FT I.D. inch : 0.00
WEIGHT PIPE LENGTH : 498 FT I.D. inch : 3.20
DRILL PIPE LENGTH : 3805 FT I.D. inch : 3.80
TEST TOOL LENGTH : 20 FT TOOL SIZE : 5.50
ANCHOR LENGTH : 15 FT ANCHOR SIZE : 5.50
SURFACE CHOKE SIZE : .75 IN BOTTOM CHOKE SIZE : .75
MAIN HOLE SIZE : 7.875 IN TOOL JOINT SIZE : 4.5XH

BLOW COMMENT #1 : WEAK BLOW 2" IN WATER ON INITIAL FLOW PERIOD.
BLOW COMMENT #2 : WEAK BLOW 3/4" IN WATER ON FINAL FLOW PERIOD.
BLOW COMMENT #3 :
BLOW COMMENT #4 :

WESTERN TESTING CO. INC.
WICHITA-KANSAS

Pressure Transient Report

COMPANY : ENERGY EXPLORATION INC.
RIG : LANE-KANSAS
FIELD : THOMAS
WELL : #1
DATE : 11-18-88
GAUGE NO : 6233

OPERATIONAL COMMENTS

RECOVERED 30 FT. OF GAS ABOVE FLUID.

COMPANY : ENERGY EXPLORATION INC.
 WELL : #1
 GAUGE # : 6233
 DATE : 18/11/88

FIELD : THOMAS
 JOB # : 12676
 DEPTH : 4338
 TEST :

DATA No.	REAL TIME HR:MN:SS	ELAPSE TIME DELTA HOURS	PRESSURE PSIG	TEMP DEG F	DELTA P Pi-P(i-1)
INITIAL FLOW PERIOD					
2	10: 0: 0	0.000	20.000	121.00	0.000
3	10: 4: 59	0.083	20.000	121.00	0.000
4	10:10: 0	0.167	20.000	121.00	0.000
5	10:15: 0	0.250	23.000	121.00	3.000
6	10:19: 59	0.333	25.000	121.00	2.000
7	10:25: 0	0.417	27.000	121.00	2.000
8	10:30: 0	0.500	30.000	121.00	3.000
9	10:34: 59	0.583	30.000	121.00	0.000
INITIAL SHUT IN					
10	10:37: 59	0.633	36.000	121.00	6.000
11	10:40: 59	0.683	66.000	121.00	30.000
12	10:43: 59	0.733	154.000	121.00	88.000
13	10:46: 59	0.783	331.000	121.00	177.000
14	10:49: 59	0.833	461.000	121.00	130.000
15	10:52: 59	0.883	508.000	121.00	47.000
16	10:55: 59	0.933	528.000	121.00	20.000
17	10:58: 59	0.983	541.000	121.00	13.000
18	11: 1: 59	1.033	549.000	121.00	8.000
19	11: 4: 59	1.083	554.000	121.00	5.000
20	11: 7: 59	1.133	560.000	121.00	6.000
21	11:10: 59	1.183	562.000	121.00	2.000
22	11:13: 59	1.233	565.000	121.00	3.000
23	11:16: 59	1.283	567.000	121.00	2.000
24	11:19: 59	1.333	568.000	121.00	1.000
25	11:22: 59	1.383	569.000	121.00	1.000
26	11:25: 59	1.433	570.000	121.00	1.000
27	11:28: 59	1.483	571.000	121.00	1.000
28	11:31: 59	1.533	572.000	121.00	1.000
29	11:34: 59	1.583	573.000	121.00	1.000
30	11:37: 59	1.633	574.000	121.00	1.000
FINAL FLOW PERIOD					
31	11:39: 0	1.650	48.000	121.00	-526.000
32	11:42: 59	1.717	48.000	121.00	0.000
33	11:48: 0	1.800	48.000	121.00	0.000
34	11:52: 59	1.883	48.000	121.00	0.000
35	11:57: 59	1.967	49.000	121.00	1.000
36	12: 3: 0	2.050	50.000	121.00	1.000
37	12: 7: 59	2.133	51.000	121.00	1.000
38	12:12: 59	2.217	52.000	121.00	1.000
39	12:18: 0	2.300	53.000	121.00	1.000
40	12:22: 59	2.383	53.000	121.00	0.000
41	12:27: 59	2.467	54.000	121.00	1.000
42	12:33: 0	2.550	55.000	121.00	1.000
43	12:37: 59	2.633	55.000	121.00	0.000
FINAL SHUT IN					
44	12:40: 59	2.683	69.000	121.00	14.000
45	12:43: 59	2.733	129.000	121.00	60.000
46	12:46: 59	2.783	224.000	121.00	95.000
47	12:49: 59	2.833	363.000	121.00	139.000
48	12:52: 59	2.883	444.000	121.00	81.000

COMPANY : ENERGY EXPLORATION INC.
WELL : #1
GAUGE # : 6233
DATE : 18/11/88

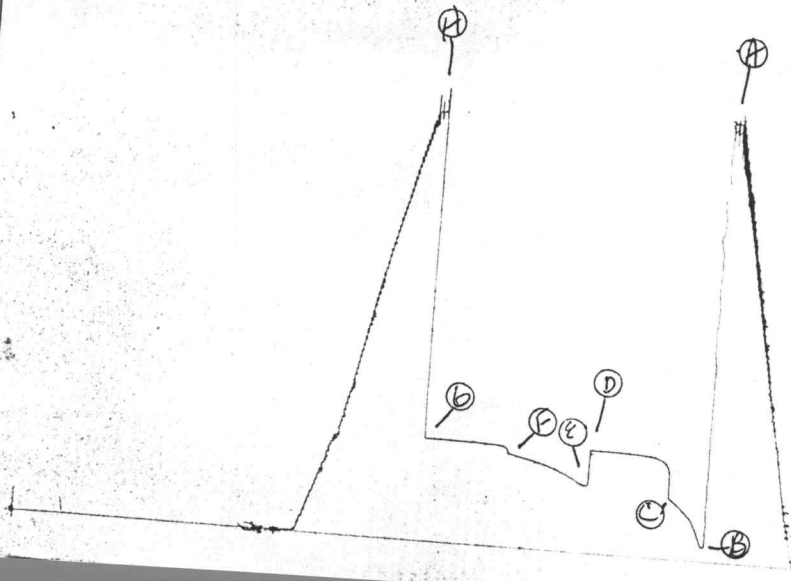
FIELD : THOMAS
JOB # : 12676
DEPTH : 4338
TEST :

DATA No.	REAL TIME HR:MN:SS	ELAPSE TIME DELTA HOURS	PRESSURE PSIG	TEMP DEG F	DELTA P Pi-P(i-1)
49	12:55:59	2.933	485.000	121.00	41.000
50	12:58:59	2.983	506.000	121.00	21.000
51	13: 1:59	3.033	518.000	121.00	12.000
52	13: 4:59	3.083	525.000	121.00	7.000
53	13: 7:59	3.133	530.000	121.00	5.000
54	13:10:59	3.183	535.000	121.00	5.000
55	13:13:59	3.233	538.000	121.00	3.000
56	13:16:59	3.283	542.000	121.00	4.000
57	13:19:59	3.333	545.000	121.00	3.000
58	13:22:59	3.383	549.000	121.00	4.000
59	13:25:59	3.433	551.000	121.00	2.000
60	13:28:59	3.483	552.000	121.00	1.000
61	13:31:59	3.533	553.000	121.00	1.000
62	13:34:59	3.583	554.000	121.00	1.000
63	13:37:59	3.633	555.000	121.00	1.000
64	13:40:59	3.683	556.000	121.00	1.000

WESTERN TESTING CO. INC.

6233

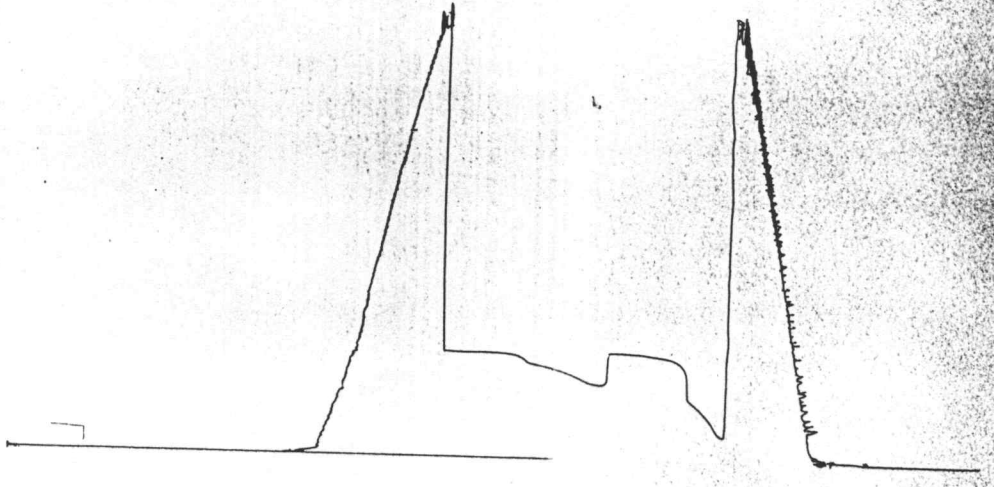
TK # 12677
I



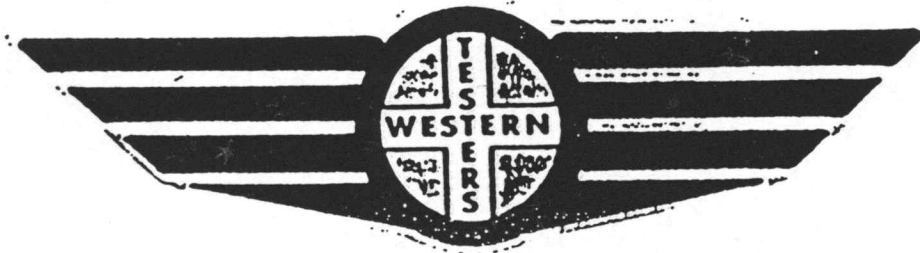
1392

TK # 12677

○



FORMATION TEST REPORT



Home Office:

Wichita, Kansas 67201

P.O. Box 1599

Phone (316) 262-5861

COMPANY

ENERGY EXPLORATION, INC.

LEASE & WELL NO.

THOMAS #1

SEC. 17

TWP. 19S

RGE. 28W

TEST NO. 4

DATE

11/18/88

WESTERN TESTING CO. INC.
SUBSURFACE PRESSURE SURVEY

DATE : 11-18-88 TICKET : 12677
CUSTOMER : ENERGY EXPLORATION INC. LEASE : THOMAS
WELL : #1 TEST: 4 GEOLOGIST : K ROBERTS
ELEVATION : 2785 KB FORMATION : L-KC-L-PLEAS
SECTION : 17 TOWNSHIP : 19S
RANGE : 28W COUNTY : LANE STATE : KANSAS
GAUGE SN# : 6233 RANGE : 4000 CLOCK : 12

INTERVAL FROM : 4342 TO : 4390 TOTAL DEPTH : 4390
DEPTH OF SELECTIVE ZONE :
PACKER DEPTH : 4337 SIZE : 6.75
PACKER DEPTH : 4342 SIZE : 6.75
PACKER DEPTH : SIZE :
PACKER DEPTH : SIZE :

DRILLING CON. : ABERCROMBIE RIG 4
MUD TYPE : DAPAC VISCOSITY : 49
WEIGHT : 9.2 WATER LOSS (CC) : 10
CHLORIDES (PPM) : 6000
JARS-MAKE : NO SERIAL NUMBER :
DID WELL FLOW ? : NO REVERSED OUT ? : NO

DRILL COLLAR LENGTH : 0 FT I.D. inch : 0.00
WEIGHT PIPE LENGTH : 466 FT I.D. inch : 3.20
DRILL PIPE LENGTH : 3856 FT I.D. inch : 3.80
TEST TOOL LENGTH : 20 FT TOOL SIZE : 5.50
ANCHOR LENGTH : 48 FT ANCHOR SIZE : 5.50
SURFACE CHOKE SIZE : .75 IN BOTTOM CHOKE SIZE : .75
MAIN HOLE SIZE : 7.875 IN TOOL JOINT SIZE : 4.5 XH

BLOW COMMENT #1 : INITIAL FLOW-STRONG BLWO-BOTTOM OF BUCKET IN 3 MINUTES
BLOW COMMENT #2 : FINAL FLOW-STRONG BLOW-BOTTOM OF BUCKET IN 5 MINUTES
BLOW COMMENT #3 :
BLOW COMMENT #4 :

RECOVERED : 10 FT OF: MUD / SCUM OF OIL ON TOP
RECOVERED : 935 FT OF: WATER

CHLORIDES: 34000 PPM

Total Barrels Fluid = 11.35
Total Fluid Prod Rate = 181.66 BFPD
Indicated Wtr Rate = 179.93 BWPD

REMARK 1 :
REMARK 2 :
REMARK 3 :
REMARK 4 :

SET PACKER(S) : 2:45 PM

TIME STARTED OFF BOTTOM : 6:15 PM

WELL TEMPERATURE : 124

INITIAL HYDROSTATIC PRESSURE

(A) 2251

INITIAL FLOW PERIOD MIN: 30

(B) 81 PSI TO (C) : 325

INITIAL CLOSED IN PERIOD MIN: 60

(D) 546

FINAL FLOW PERIOD MIN: 60

(E) 363 PSI TO (F) : 496

FINAL CLOSED IN PERIOD MIN: 60

(G) 546

FINAL HYDROSTATIC PRESSURE

(H) 2239

WESTERN TESTING CO. INC.
WICHITA-KANSAS

Pressure Transient Report

COMPANY : ENERGY EXPLORATION INC.
RIG : LANE-KANSAS
FIELD : THOMAS
WELL : #1
DATE : 11-18-88
GAUGE NO : 6233

OPERATIONAL COMMENTS

COMPANY : ENERGY EXPLORATION INC.

WELL : #1

GAUGE # : 6233

DATE : 18/11/88

FIELD : THOMAS

JOB # : 12677

DEPTH : 4390

TEST :

DATA No.	REAL TIME HR:MN:SS	ELAPSE TIME DELTA HOURS	PRESSURE PSIG	TEMP DEG F	DELTA P Pi-P(i-1)
INITIAL FLOW					
2	2:45:0	0.000	81.000	124.00	0.000
3	2:49:59	0.083	102.000	124.00	21.000
4	2:55:0	0.167	186.000	124.00	84.000
5	3:0:0	0.250	239.000	124.00	53.000
6	3:4:59	0.333	273.000	124.00	34.000
7	3:10:0	0.417	305.000	124.00	32.000
8	3:15:0	0.500	325.000	124.00	20.000
INITIAL SHUT-IN					
9	3:18:0	0.550	497.000	124.00	172.000
10	3:21:0	0.600	518.000	124.00	21.000
11	3:24:0	0.650	527.000	124.00	9.000
12	3:27:0	0.700	533.000	124.00	6.000
13	3:30:0	0.750	537.000	124.00	4.000
14	3:33:0	0.800	539.000	124.00	2.000
15	3:36:0	0.850	541.000	124.00	2.000
16	3:39:0	0.900	542.000	124.00	1.000
17	3:42:0	0.950	543.000	124.00	1.000
18	3:45:0	1.000	544.000	124.00	1.000
19	3:48:0	1.050	545.000	124.00	1.000
20	3:51:0	1.100	546.000	124.00	1.000
21	3:54:0	1.150	546.000	124.00	0.000
22	3:57:0	1.200	546.000	124.00	0.000
23	4:0:0	1.250	546.000	124.00	0.000
24	4:3:0	1.300	546.000	124.00	0.000
25	4:6:0	1.350	546.000	124.00	0.000
26	4:9:0	1.400	546.000	124.00	0.000
27	4:12:0	1.450	546.000	124.00	0.000
28	4:15:0	1.500	546.000	124.00	0.000
FINAL FLOW					
29	4:16:0	1.517	363.000	124.00	-183.000
30	4:19:59	1.583	363.000	124.00	0.000
31	4:25:0	1.667	382.000	124.00	19.000
32	4:30:0	1.750	401.000	124.00	19.000
33	4:34:59	1.833	419.000	124.00	18.000
34	4:40:0	1.917	432.000	124.00	13.000
35	4:45:0	2.000	445.000	124.00	13.000
36	4:49:59	2.083	455.000	124.00	10.000
37	4:55:0	2.167	466.000	124.00	11.000
38	5:0:0	2.250	476.000	124.00	10.000
39	5:4:59	2.333	483.000	124.00	7.000
40	5:10:0	2.417	490.000	124.00	7.000
41	5:15:0	2.500	496.000	124.00	6.000
FINAL SHUT-IN					
42	5:18:0	2.550	533.000	124.00	37.000
43	5:21:0	2.600	539.000	124.00	6.000
44	5:24:0	2.650	541.000	124.00	2.000
45	5:27:0	2.700	542.000	124.00	1.000
46	5:30:0	2.750	542.000	124.00	0.000
47	5:33:0	2.800	543.000	124.00	1.000
48	5:36:0	2.850	544.000	124.00	1.000

COMPANY : ENERGY EXPLORATION INC.
WELL : #1
GAUGE # : 6233
DATE : 18/11/88

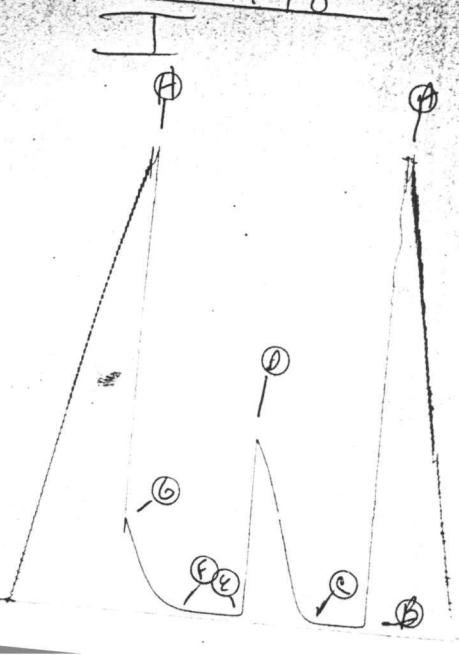
FIELD : THOMAS
JOB # : 12677
DEPTH : 4390
TEST :

DATA No.	REAL TIME HR:MN:SS	ELAPSE TIME DELTA HOURS	PRESSURE PSIG	TEMP DEG F	DELTA P Pi-P(i-1)
49	5:39: 0	2.900	545.000	124.00	1.000
50	5:42: 0	2.950	546.000	124.00	1.000
51	5:45: 0	3.000	546.000	124.00	0.000
52	5:48: 0	3.050	546.000	124.00	0.000
53	5:51: 0	3.100	546.000	124.00	0.000
54	5:54: 0	3.150	546.000	124.00	0.000
55	5:57: 0	3.200	546.000	124.00	0.000
56	6: 0: 0	3.250	546.000	124.00	0.000
57	6: 3: 0	3.300	546.000	124.00	0.000
58	6: 6: 0	3.350	546.000	124.00	0.000
59	6: 9: 0	3.400	546.000	124.00	0.000
60	6:12: 0	3.450	546.000	124.00	0.000
61	6:15: 0	3.500	546.000	124.00	0.000

WESTERN TESTING CO. INC.

6253

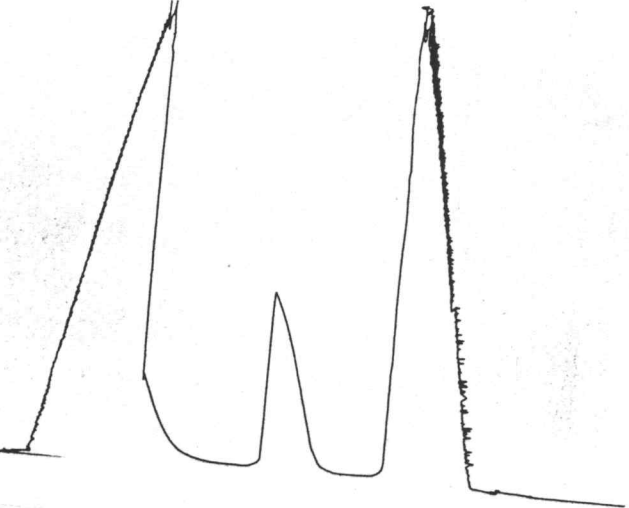
TK # 12678



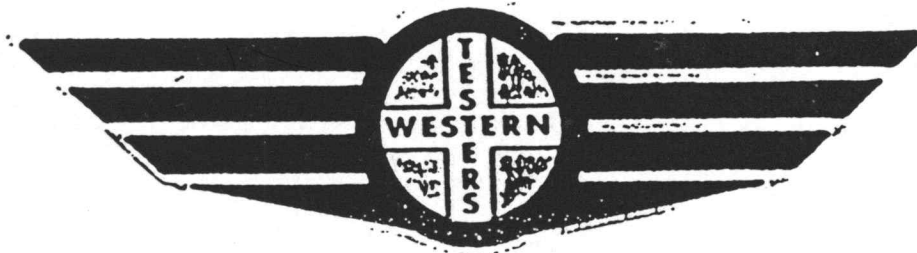
1344

TKT # 12678

0



FORMATION TEST REPORT



Home Office:

Wichita, Kansas 67201

P.O. Box 1599

Phone (316) 262-5861

COMPANY:

ENERGY EXPLORATION, INC.

LEASE & WELL NO.

THOMAS #1

SEC. 17

TWP. 19S

RGE. 28W

TEST NO. 5

DATE 11/19/88

WESTERN TESTING CO. INC.
SUBSURFACE PRESSURE SURVEY

DATE : 11-19-88 TICKET : 12678
CUSTOMER : ENERGY EXPLORATION INC. LEASE : THOMAS
WELL : #1 TEST: 5 GEOLOGIST : K ROBERTS
ELEVATION : 2785 KB FORMATION : FT SCOTT
SECTION : 17 TOWNSHIP : 19S
RANGE : 28W COUNTY : LANE STATE : KANSAS
GAUGE SN# : 6233 RANGE : 4000 CLOCK : 12

INTERVAL FROM : 4505 TO : 4545 TOTAL DEPTH : 4545
DEPTH OF SELECTIVE ZONE :
PACKER DEPTH : 4500 SIZE : 6.75
PACKER DEPTH : 4505 SIZE : 6.75
PACKER DEPTH : SIZE :
PACKER DEPTH : SIZE :

DRILLING CON. : ABERCROMBIE RIG 4
MUD TYPE : DAPAC VISCOSITY : 47
WEIGHT : 9.5 WATER LOSS (CC) : 10
CHLORIDES (PPM) : 6000
JARS-MAKE : NO SERIAL NUMBER :
DID WELL FLOW ? : NO REVERSED OUT ? : NO

DRILL COLLAR LENGTH : 0 FT I.D. inch : 0.00
WEIGHT PIPE LENGTH : 498 FT I.D. inch : 3.20
DRILL PIPE LENGTH : 3987 FT I.D. inch : 3.80
TEST TOOL LENGTH : 20 FT TOOL SIZE : 5.50
ANCHOR LENGTH : 40 FT ANCHOR SIZE : 5.50
SURFACE CHOKE SIZE : .75 IN BOTTOM CHOKE SIZE : .75
MAIN HOLE SIZE : 7.875 IN TOOL JOINT SIZE : 4.5 XH

BLOW COMMENT #1 : INITIAL FLOW-WEAK DYING BLOW- 1/2" TO 1/4".
BLOW COMMENT #2 : FINAL FLOW-NO BLOW.
BLOW COMMENT #3 :
BLOW COMMENT #4 :

RECOVERED : 10 FT OF: MUD

CHLORIDES: 6000 PPM

Total Barrels Fluid = 0.10
Total Fluid Prod Rate = 2.39 BFPD
Indicated Wtr Rate = 0.02 BWPD

REMARK 1 :
REMARK 2 :
REMARK 3 :
REMARK 4 :

SET PACKER(S) : 3:35 PM

TIME STARTED OFF BOTTOM : 6:35 PM

WELL TEMPERATURE : 126

INITIAL HYDROSTATIC PRESSURE

(A) 2361

INITIAL FLOW PERIOD MIN: 30

(B) 26 PSI TO (C) : 26

INITIAL CLOSED IN PERIOD MIN: 63

(D) 964

FINAL FLOW PERIOD MIN: 30

(E) 32 PSI TO (F) : 32

FINAL CLOSED IN PERIOD MIN: 63

(G) 498

FINAL HYDROSTATIC PRESSURE

(H) 2336

WESTERN TESTING CO. INC.
WICHITA-KANSAS

Pressure Transient Report

COMPANY : ENERGY EXPLORATION INC.
RIG : LANE-KANSAS
FIELD : THOMAS
WELL : #1
DATE : 11-19-88
GAUGE NO : 6233

OPERATIONAL COMMENTS

COMPANY : ENERGY EXPLORATION INC.
 WELL : #1
 GAUGE # : 6233
 DATE : 19/11/88

FIELD : THOMAS
 JOB # : 12678
 DEPTH : 4545
 TEST :

DATA No.	REAL TIME HR:MN:SS	ELAPSE TIME DELTA HOURS	PRESSURE PSIG	TEMP DEG F	DELTA P Pi-P(i-1)
INITIAL FLOW					
2	3:35:0	0.000	26.000	126.00	0.000
3	3:39:59	0.083	26.000	126.00	0.000
4	3:45:0	0.167	26.000	126.00	0.000
5	3:50:0	0.250	26.000	126.00	0.000
6	3:54:59	0.333	26.000	126.00	0.000
7	4:0:0	0.417	26.000	126.00	0.000
8	4:5:0	0.500	26.000	126.00	0.000
INITIAL SHUT-IN					
9	4:8:0	0.550	26.000	126.00	0.000
10	4:11:0	0.600	28.000	126.00	2.000
11	4:14:0	0.650	30.000	126.00	2.000
12	4:17:0	0.700	39.000	126.00	9.000
13	4:20:0	0.750	53.000	126.00	14.000
14	4:23:0	0.800	72.000	126.00	19.000
15	4:26:0	0.850	110.000	126.00	38.000
16	4:29:0	0.900	170.000	126.00	60.000
17	4:32:0	0.950	236.000	126.00	66.000
18	4:35:0	1.000	315.000	126.00	79.000
19	4:38:0	1.050	385.000	126.00	70.000
20	4:41:0	1.100	459.000	126.00	74.000
21	4:44:0	1.150	537.000	126.00	78.000
22	4:47:0	1.200	614.000	126.00	77.000
23	4:50:0	1.250	677.000	126.00	63.000
24	4:53:0	1.300	741.000	126.00	64.000
25	4:56:0	1.350	802.000	126.00	61.000
26	4:59:0	1.400	855.000	126.00	53.000
27	5:2:0	1.450	900.000	126.00	45.000
28	5:5:0	1.500	937.000	126.00	37.000
29	5:8:0	1.550	964.000	126.00	27.000
FINAL FLOW					
30	5:9:0	1.567	32.000	126.00	-932.000
31	5:12:59	1.633	32.000	126.00	0.000
32	5:18:0	1.717	32.000	126.00	0.000
33	5:23:0	1.800	32.000	126.00	0.000
34	5:27:59	1.883	32.000	126.00	0.000
35	5:33:0	1.967	32.000	126.00	0.000
36	5:38:0	2.050	32.000	126.00	0.000
FINAL SHUT-IN					
37	5:41:0	2.100	32.000	126.00	0.000
38	5:43:59	2.150	33.000	126.00	1.000
39	5:47:0	2.200	35.000	126.00	2.000
40	5:50:0	2.250	36.000	126.00	1.000
41	5:53:0	2.300	38.000	126.00	2.000
42	5:56:0	2.350	42.000	126.00	4.000
43	5:58:59	2.400	49.000	126.00	7.000
44	6:2:0	2.450	56.000	126.00	7.000
45	6:5:0	2.500	69.000	126.00	13.000
46	6:8:0	2.550	82.000	126.00	13.000
47	6:11:0	2.600	101.000	126.00	19.000
48	6:14:0	2.650	122.000	126.00	21.000

COMPANY : ENERGY EXPLORATION INC.
WELL : #1
GAUGE # : 6233
DATE : 19/11/88

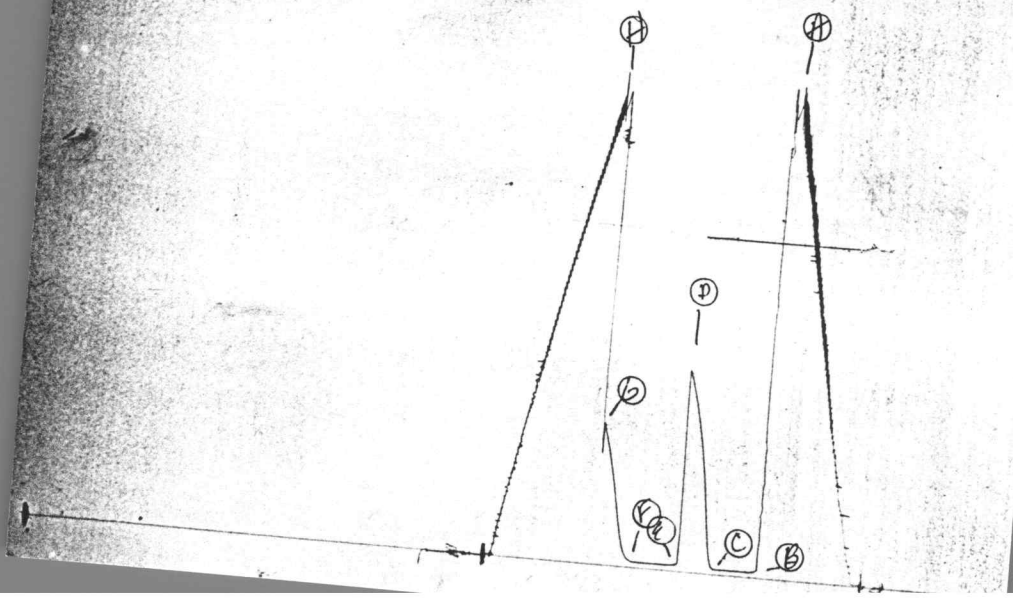
FIELD : THOMAS
JOB # : 12678
DEPTH : 4545
TEST :

DATA No.	REAL TIME HR:MN:SS	ELAPSE TIME DELTA HOURS	PRESSURE PSIG	TEMP DEG F	DELTA P Pi-P(i-1)
49	6:16:59	2.700	149.000	126.00	27.000
50	6:20: 0	2.750	182.000	126.00	33.000
51	6:23: 0	2.800	219.000	126.00	37.000
52	6:26: 0	2.850	267.000	126.00	48.000
53	6:29: 0	2.900	317.000	126.00	50.000
54	6:31:59	2.950	366.000	126.00	49.000
55	6:35: 0	3.000	417.000	126.00	51.000
56	6:38: 0	3.050	464.000	126.00	47.000
57	6:41: 0	3.100	498.000	126.00	34.000

WESTERN TESTING CO. INC.

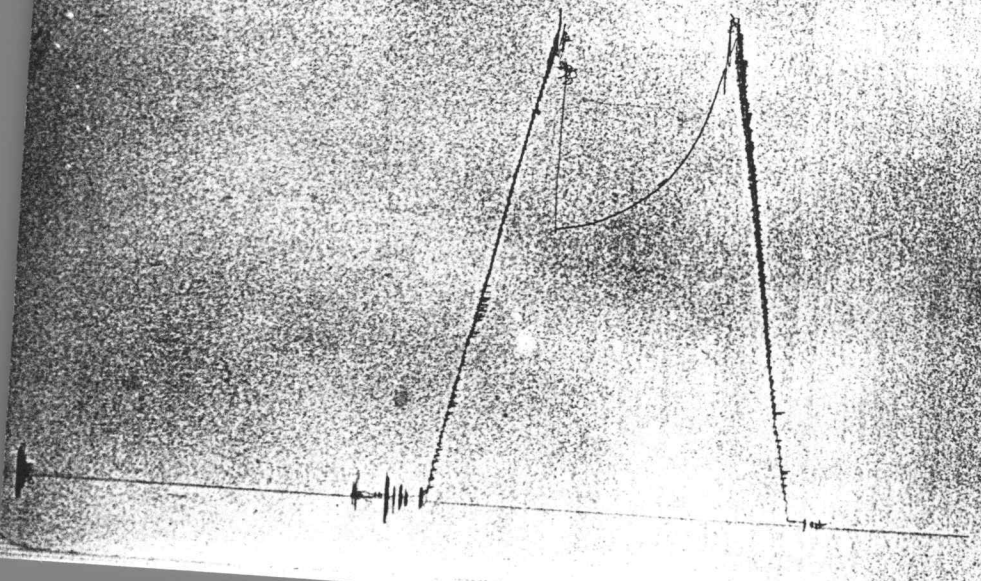
6233

TK # 12679
I



2901

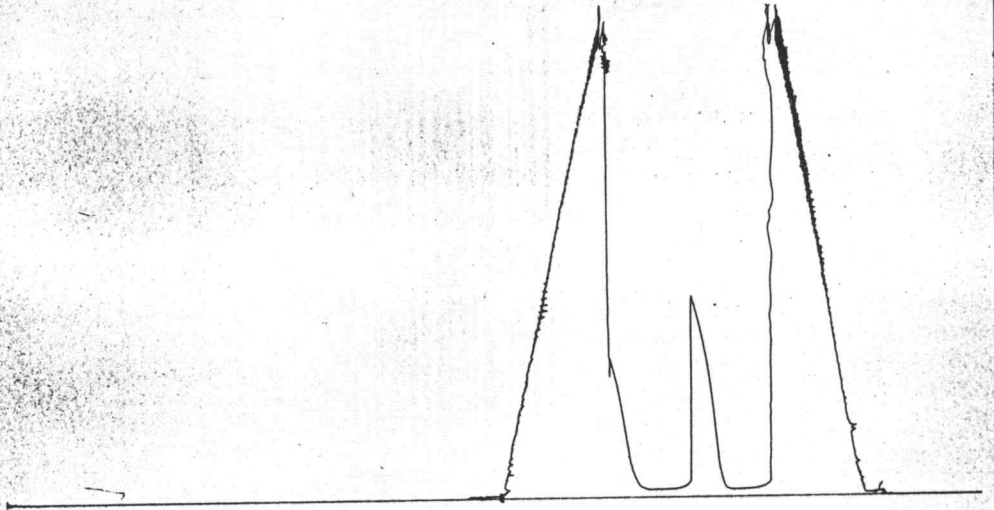
TKT # 12679
Below Straddle



1340

TRF # 12679

○



FORMATION TEST REPORT



Home Office:

Wichita, Kansas 67201

P.O. Box 1599

Phone (316) 262-5861

COMPANY

ENERGY EXPLORATION, INC.

LEASE & WELL NO.

THOMAS #1

SEC. 17

TWP. 19S

RGE. 28W

TEST NO.

6

DATE 11/20/88

WESTERN TESTING CO. INC.
SUBSURFACE PRESSURE SURVEY

DATE : 11-20-88 TICKET : 12679
CUSTOMER : ENERGY EXPLORATION INC. LEASE : THOMAS
WELL : #1 TEST: 6 GEOLOGIST : K ROBERTS
ELEVATION : 2785 KB FORMATION : JOHNSON
SECTION : 17 TOWNSHIP : 19S
RANGE : 28W COUNTY : LANE STATE : KANSAS
GAUGE SN# : 6233 RANGE : 4000 CLOCK : 12

INTERVAL FROM : 4580 TO : 4613 TOTAL DEPTH : 4686
DEPTH OF SELECTIVE ZONE :
PACKER DEPTH : 4580 SIZE : 6.75
PACKER DEPTH : 4613 SIZE : 6.75
PACKER DEPTH : SIZE :
PACKER DEPTH : SIZE :

DRILLING CON. : ABERCROMBIE RIG 4
MUD TYPE : DAPAC VISCOSITY : 49
WEIGHT : 9.6 WATER LOSS (CC) : 10.8
CHLORIDES (PPM) : 6000
JARS-MAKE : NO SERIAL NUMBER :
DID WELL FLOW ? : NO REVERSED OUT ? : NO

DRILL COLLAR LENGTH : 0 FT I.D. inch : 0.00
WEIGHT PIPE LENGTH : 436 FT I.D. inch : 3.20
DRILL PIPE LENGTH : 4129 FT I.D. inch : 3.80
TEST TOOL LENGTH : 15 FT TOOL SIZE : 5.50
ANCHOR LENGTH : 33 FT ANCHOR SIZE : 5.50
SURFACE CHOKE SIZE : .75 IN BOTTOM CHOKE SIZE : .75
MAIN HOLE SIZE : 7.875 IN TOOL JOINT SIZE : 4.5 XH

BLOW COMMENT #1 : INITIAL FLOW-WEAK DYING BLOW-1/4" IN WATER.
BLOW COMMENT #2 : FINAL FLOW-NO BLOW.
BLOW COMMENT #3 :
BLOW COMMENT #4 :

RECOVERED : 10 FT OF: MUD / FEW OIL SPOTS
OIL LESS THAN 1%

CHLORIDES: 6000 PPM

Total Barrels Fluid = 0.10
Total Fluid Prod Rate = 2.39 BFPD
Indicated Wtr Rate = 0.02 BWPD

REMARK 1 :
REMARK 2 :
REMARK 3 :
REMARK 4 :

SET PACKER(S) : 10:10 PM

TIME STARTED OFF BOTTOM : 12:10 AM

WELL TEMPERATURE : 121

INITIAL HYDROSTATIC PRESSURE

(A) 2396

INITIAL FLOW PERIOD MIN: 30

(B) 29 PSI TO (C) : 29

INITIAL CLOSED IN PERIOD MIN: 30

(D) 1059

FINAL FLOW PERIOD MIN: 30

(E) 34 PSI TO (F) : 34

FINAL CLOSED IN PERIOD MIN: 30

(G) 752

FINAL HYDROSTATIC PRESSURE

(H) 2382

WESTERN TESTING CO. INC.
WICHITA-KANSAS

Pressure Transient Report

COMPANY : ENERGY EXPLORATION INC.
RIG : LANE-KANSAS
FIELD : THOMAS
WELL : #1
DATE : 11-20-88
GAUGE NO : 6233

OPERATIONAL COMMENTS

COMPANY : ENERGY EXPLORATION INC.
 WELL : #1
 GAUGE # : 6233
 DATE : 20/11/88

FIELD : THOMAS
 JOB # : 12679
 DEPTH : 4686
 TEST :

DATA No.	REAL TIME HR:MN:SS	ELAPSE TIME DELTA HOURS	PRESSURE PSIG	TEMP DEG F	DELTA P Pi-P(i-1)
INITIAL FLOW					
2	10:10: 0	0.000	29.000	121.00	0.000
3	10:14:59	0.083	29.000	121.00	0.000
4	10:20: 0	0.167	29.000	121.00	0.000
5	10:25: 0	0.250	29.000	121.00	0.000
6	10:29:59	0.333	29.000	121.00	0.000
7	10:35: 0	0.417	29.000	121.00	0.000
8	10:40: 0	0.500	29.000	121.00	0.000
INITIAL SHUT-IN					
9	10:43: 0	0.550	33.000	121.00	4.000
10	10:46: 0	0.600	74.000	121.00	41.000
11	10:49: 0	0.650	220.000	121.00	146.000
12	10:52: 0	0.700	399.000	121.00	179.000
13	10:55: 0	0.750	571.000	121.00	172.000
14	10:58: 0	0.800	704.000	121.00	133.000
15	11: 1: 0	0.850	812.000	121.00	108.000
16	11: 4: 0	0.900	895.000	121.00	83.000
17	11: 7: 0	0.950	984.000	121.00	89.000
18	11:10: 0	1.000	1059.000	121.00	75.000
FINAL FLOW					
19	11:11: 0	1.017	34.000	121.00	-1025.000
20	11:14:59	1.083	34.000	121.00	0.000
21	11:20: 0	1.167	34.000	121.00	0.000
22	11:25: 0	1.250	34.000	121.00	0.000
23	11:29:59	1.333	34.000	121.00	0.000
24	11:35: 0	1.417	34.000	121.00	0.000
25	11:40: 0	1.500	34.000	121.00	0.000
FINAL SHUT-IN					
26	11:43: 0	1.550	35.000	121.00	1.000
27	11:46: 0	1.600	39.000	121.00	4.000
28	11:49: 0	1.650	58.000	121.00	19.000
29	11:52: 0	1.700	107.000	121.00	49.000
30	11:55: 0	1.750	211.000	121.00	104.000
31	11:58: 0	1.800	323.000	121.00	112.000
32	12: 1: 0	1.850	438.000	121.00	115.000
33	12: 4: 0	1.900	544.000	121.00	106.000
34	12: 7: 0	1.950	639.000	121.00	95.000
35	12:10: 0	2.000	752.000	121.00	113.000

WESTERN TESTING CO. INC.