

KANSAS

WELL COMPLETION REPORT AND DRILLER'S LOG

State Geological Survey

WICHITA BRANCH

S. 28 T. 19S R. 19 W

Loc. NE SE SE

County RUSH

API No. 15 - 165 - 20,896

Operator PETRO GAS ENERGIES, INC.

Address 411 FARMERS & BANKERS BLDG., WICHITA, KS 67202

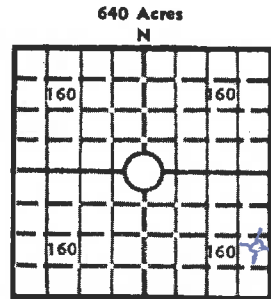
Well No. 1 Lease Name SELTMANN

Footage Location 990 feet from (W) (S) line 330 feet from (E) (N) line

Principal Contractor BLUE GOOSE DRLG. INC. Geologist HARVEY GOUGH

Spud Date 7-18-81 Date Completed 7-28-81 Total Depth 4185 P.B.T.D.

Directional Deviation Oil and/or Gas Purchaser NONE D&A



Locate well correctly

Elev.: Gr. 2272

DF 2277 KB 2279

CASING RECORD

Report of all strings set— surface, intermediate, production, etc.

Purpose of string	Size hole drilled	Size casing set (in O.D.)	Weight lbs/ft.	Setting depth	Type cement	Sacks	Type and percent additives
SURFACE	12 1/4	8 5/8	20#	407	Common	275	3% CACL 2% GEL

LINER RECORD

PERFORATION RECORD

Top, ft.	Bottom, ft.	Sacks cement	Shots per ft.	Size & type	Depth interval

TUBING RECORD

Size	Setting depth	Packer set at

ACID, FRACTURE, SHOT, CEMENT SQUEEZE RECORD

Amount and kind of material used	Depth interval treated

INITIAL PRODUCTION

Date of first production		Producing method (flowing, pumping, gas lift, etc.)			
RATE OF PRODUCTION PER 24 HOURS	Oil bbls.	Gas MCF	Water bbls.	Gas-oil ratio	CFPB
Disposition of gas (vented, used on lease or sold)			Producing interval (s)		

INSTRUCTIONS: As provided in KCC Rule 82-2-125, within 90 days after completion of a well, one completed copy of this Drillers Log shall be transmitted to the State Geological Survey of Kansas, 4150 Monroe Street, Wichita, Kansas 67209. Copies of this form are available from the Conservation Division, State Corporation Commission, 245 No. Water, Wichita, Kansas 67202. Phone AC 316-522-2206. If confidential custody is desired, please note Rule 82-2-125. Drillers Logs will be on open file in the Oil and Gas Division, State Geological Survey of Kansas, Lawrence, Kansas 66044.

Operator PETRO-GAS ENERGIES INC. DESIGNATE TYPE OF COMP.: OIL, GAS, DRY HOLE, SWDW, ETC.: DRY HOLE

Well No. 1 Lease Name SELTMANN

S 28 T 19S R 19 W

WELL LOG

Show all important zones of porosity and contents thereof; cored intervals, and all drill-stem tests, including depth interval tested, cushion used, time tool open, flowing and shut-in pressures, and recoveries.

SHOW GEOLOGICAL MARKERS, LOGS RUN, OR OTHER DESCRIPTIVE INFORMATION.

FORMATION DESCRIPTION, CONTENTS, ETC.	TOP	BOTTOM	NAME	DEPTH
			E. LOG TOPS	
CLAY, SAND, RED BED	0	411		
RED BED, SHALE	411	778	ANHYDRITE	1408
ANHYDRITE	778	802	B/ANHYDRITE	1436
RED BED, SAND, SHELLS	802	1220	HEEBNER	3677
SHALE	1220	1422	TORONTO	3696
LIME ANHYDRITE	1422	1448	LANSING	3725
SHALE	1448	2050	BKC	4014
SHALE AND LIME	2050	2700	CHEROKEE SD	4145
LIME AND SHELL	2700	3202		
LIME	3202	3410	LTD	4185
SHALE & LIME	3410	4190	RTD	4190
TD		4190		
<p>DST #1 4144 to 4158 30,30,30,30 Weak blow for 22' died Strong blow on 2nd opening Rec.: 1146' Salt Water</p> <p>Tool was plugged on 1st opening. Only pressure recorded was FBHP 1133#</p>				

USE ADDITIONAL SHEETS, IF NECESSARY, TO COMPLETE WELL RECORD.

Date Received	<i>Harvey Gough</i>
	Signature
	Geologist
	Title
	10-29-81
	Date