

Serial #: 8365

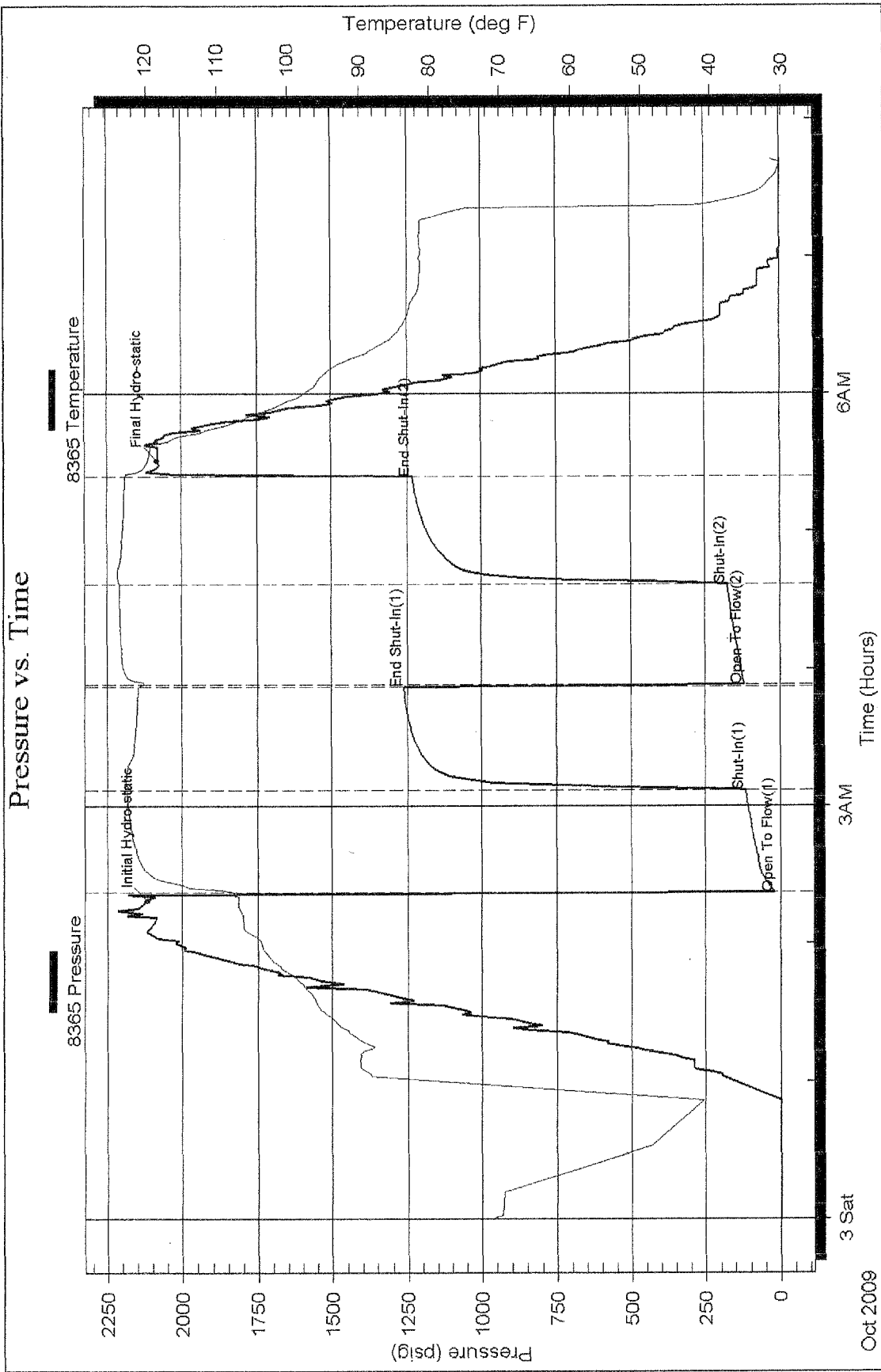
Inside

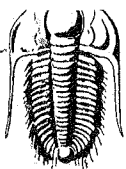
American Warrior Inc

6-19s-21w Nless

DST Test Number: 1

Pressure vs. Time





TRILOBITE TESTING INC.

P.O. Box 1733 • Hays, Kansas 67601

Test Ticket

NO. 36547

Well Name & No. STRECKER #2-6 Test No. 1 Date 10-2-09
 Company AMERICAN WARRIOR INC Elevation 2174 KB 2169 GL
 Address P.O. Box 399 Garden City, Ks 67846
 Co. Rep / Geo. JASON ALM Rig PETROMARK rig 1
 Location: Sec. 6 Twp. 19^s Rge. 21^w Co. NESS State Ks

Interval Tested 4278-4287 Zone Tested MISS
 Anchor Length 9 Drill Pipe Run 4136 Mud Wt. 9.4
 Top Packer Depth 4273 Drill Collars Run 120 Vis 54
 Bottom Packer Depth 4278 Wt. Pipe Run - WL 8.8
 Total Depth 4287 Chlorides 6600 ppm System LCM -

Blow Description TFP - WEAK TO STRONG IN 37 MIN
FFP - WEAK TO STRONG IN 44 MIN
ISIP - 1/4" BLOW BACK
FSIP - 1/8" BLOW BACK

Rec	Feet of	%gas	%oil	%water	%mud
<u>100</u>	<u>GIP</u>				
<u>144</u>	<u>CO</u>				
<u>248</u>	<u>WATER</u>				

Rec Total 392 BHT 123 Gravity 39 API RW 39 @ 60 ° F Chlorides 20000 ppm

(A) Initial Hydrostatic 2115 Test 2230 T-On Location
 (B) First Initial Flow 19 Jars 2359 T-Started
 (C) First Final Flow 115 Safety Joint 0225 T-Open
 (D) Initial Shut-In 1262 Circ Sub 0525 T-Pulled
 (E) Second Initial Flow 120 Hourly Standby 0741 T-Out
 (F) Second Final Flow 174 Mileage 106 RT Comments
 (G) Final Shut-In 1232 Sampler
 (H) Final Hydrostatic 2079 Straddle

Initial Open 45 Shale Packer 2230 Ruined Shale Packer
 Initial Shut-In 45 Extra Packer 2359 Ruined Packer
 Final Flow 45 Extra Recorder 0225 Extra Copies
 Final Shut-In 45 Day Standby 0525 Sub Total
 Accessibility 0741 Total

Approved By _____

Our Representative RAY SCHWAGER 409 Thank

Trilobite Testing Inc. shall not be liable for damaged of any kind of the property or personnel of the one for whom a test is made, or for any loss suffered or sustained, directly or indirectly, through the use of its equipment, or its statements or opinion concerning the results of any test. tools lost or damaged in the hole shall be paid for at cost by the party for whom the test is made.

RECEIVED
JAN 23 2010
KOC WICHITA