

**TRILOBITE  
TESTING, INC**

## DRILL STEM TEST REPORT

American Warrior, Inc.

17-19s-21w-Ness

PO Box 399  
Garden City, KS. 67846

Rachel #4-17

Job Ticket: 44676

DST#: 1

ATTN: Jason Alm

Test Start: 2011.10.19 @ 00:55:27

### GENERAL INFORMATION:

Formation: **Mississippi**

Deviated: No Whipstock: ft (KB)

Time Tool Opened: 03:09:57

Time Test Ended: 08:53:42

Test Type: Conventional Bottom Hole (Initial)

Tester: Jason McLemore

Unit No: 54

Interval: 4372.00 ft (KB) To 4382.00 ft (KB) (TVD)

Reference Elevations: 2265.00 ft (KB)

Total Depth: 4382.00 ft (KB) (TVD)

2259.00 ft (CF)

Hole Diameter: 7.80 inches Hole Condition: Good

KB to GR/CF: 6.00 ft

Serial #: 8673

Inside

Press@RunDepth: 94.90 psig @ 4374.00 ft (KB)

Capacity: 8000.00 psig

Start Date: 2011.10.19 End Date: 2011.10.19

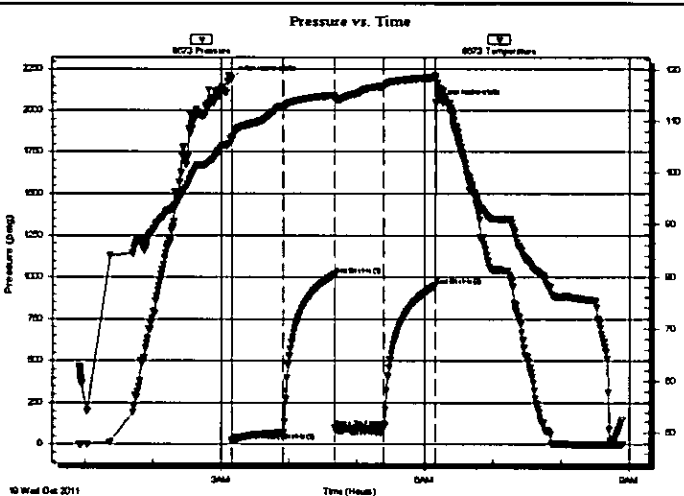
Last Calib.: 2011.10.19

Start Time: 00:55:29 End Time: 08:53:42

Time On Btm: 2011.10.19 @ 03:09:27

Time Off Btm: 2011.10.19 @ 06:09:57

TEST COMMENT: IFP-Fair Blow ,BOB in 27 Min.  
IS-Blow back Built to 1/4" in 15 Min.,Died Back to Surface  
FFP-Fair Blow , BOB in 30 Min.  
FSI-Surface Blow back for 10 Min.



### PRESSURE SUMMARY

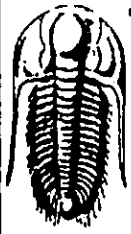
Time (Min.)	Pressure (psig)	Temp (deg F)	Annotation
0	2188.07	106.84	Initial Hydro-static
1	20.86	106.38	Open To Flow (1)
46	68.88	112.74	Shut-In(1)
91	1014.50	114.98	End Shut-In(1)
92	100.07	114.46	Open To Flow (2)
135	94.90	116.78	Shut-In(2)
181	950.26	118.43	End Shut-In(2)
181	2047.67	118.88	Final Hydro-static

### Recovery

Length (ft)	Description	Volume (bbl)
120.00	Muddy Oil-85%O-15%M	0.60
105.00	Free Oil	1.47
0.00	195' Gas In Pipe	0.00

### Gas Rates

	Choke (inches)	Pressure (psig)	Gas Rate (Mcf/d)



**TRILOBITE  
TESTING, INC.**

**DRILL STEM TEST REPORT**

**FLUID SUMMARY**

American Warrior, Inc.  
PO Box 399  
Garden City, KS. 67846  
ATTN: Jason Alm

17-19s-21w-Ness  
Rachel #4-17  
Job Ticket: 44676      **DST#: 1**  
Test Start: 2011.10.19 @ 00:55:27

**Mud and Cushion Information**

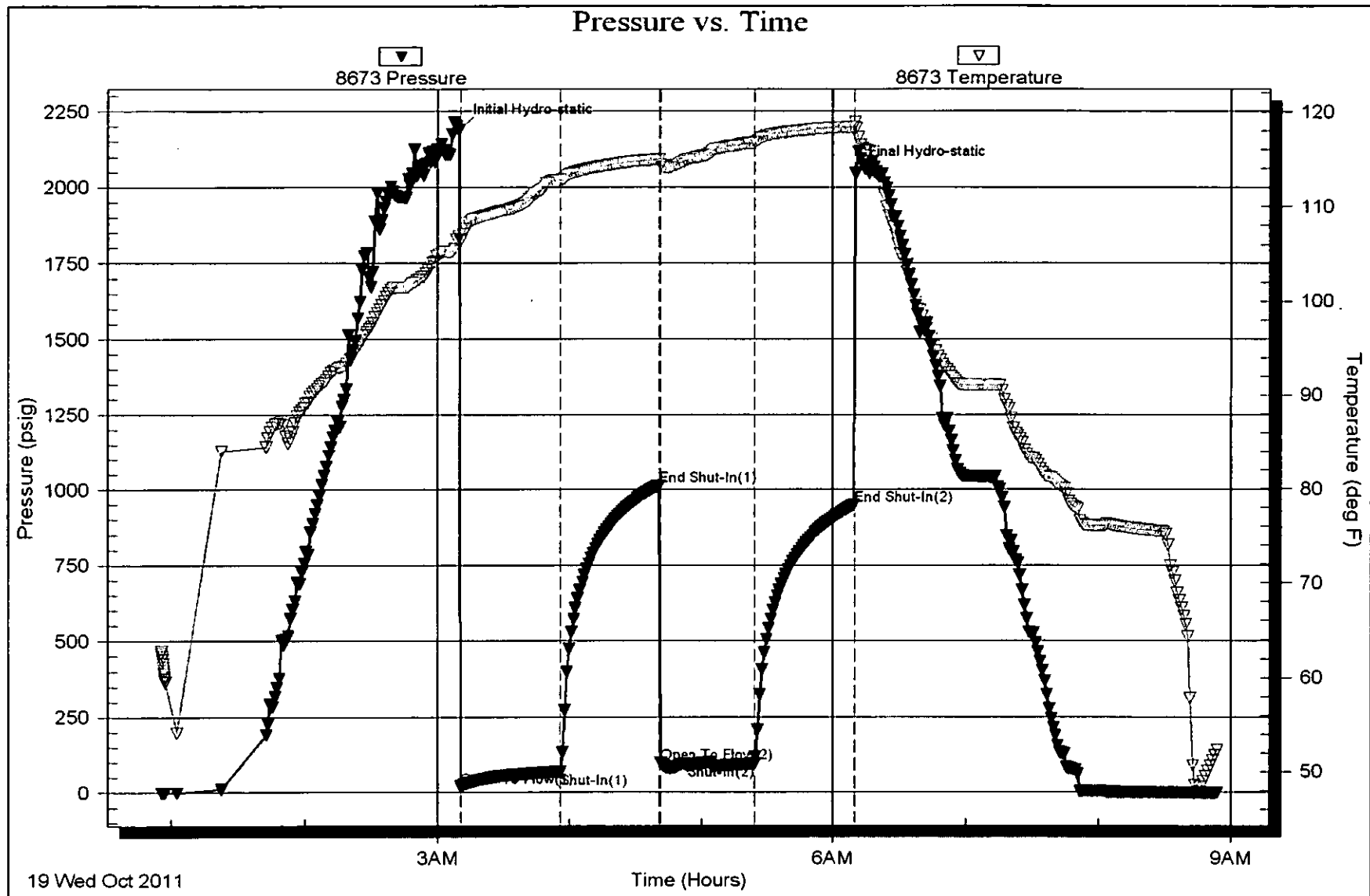
Mud Type: Gel Chem	Cushion Type:	Oil API: 41 deg API
Mud Weight: 9.00 lb/gal	Cushion Length: ft	Water Salinity: ppm
Viscosity: 46.00 sec/qt	Cushion Volume: bbl	
Water Loss: 8.81 in <sup>3</sup>	Gas Cushion Type:	
Resistivity: ohm.m	Gas Cushion Pressure: psig	
Salinity: 7600.00 ppm		
Filter Cake: inches		

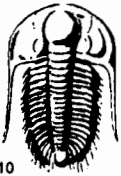
**Recovery Information**

Recovery Table

Length ft	Description	Volume bbl
120.00	Muddy Oil-85%O-15%M	0.599
105.00	Free Oil	1.473
0.00	195' Gas In Pipe	0.000

Total Length: 225.00 ft      Total Volume: 2.072 bbl  
 Num Fluid Samples: 0      Num Gas Bombs: 0      Serial #:  
 Laboratory Name:      Laboratory Location:  
 Recovery Comments:





# TRILOBITE TESTING INC.

P.O. Box 1733 • Hays, Kansas 67601

RECEIVED  
OCT 21 2011

## Test Ticket

NO. 44676 16500

Well Name & No. Rachel #4-17 Test No. 1 Date 10-18-11  
 Company American Warrior, Inc. Elevation 2265 KB 2259 GL  
 Address PO Box 399, Garden City, KS. 67846  
 Co. Rep / Geo. Jason Alm Rig Petromack #1  
 Location: Sec. 17 Twp. 19s Rge. 21w Co. Ness State KS

Interval Tested 4372-4382 Zone Tested Mississippi  
 Anchor Length 10' Drill Pipe Run 4229 Mud Wt. 9.2  
 Top Packer Depth 4367 Drill Collars Run 119 Vis 46  
 Bottom Packer Depth 4372 Wt. Pipe Run 0 WL 8.8  
 Total Depth 4382 Chlorides 7600 ppm System LCM Ø  
 Blow Description IFF - Fair Blow, BOB in 27 min.  
ISI - Blowback Built to 1/4"  
FFP - Fair Blow, BOB in 30 min.  
FSI - Surface Blowback for 10 min.

Rec	Feet of	%gas	%oil	%water	%mud
105'	Free Oil				
120	Muddy Oil		85		15
	195' GIP				

Rec Total 225 BHT \_\_\_\_\_ Gravity 41 API RW \_\_\_\_\_ @ \_\_\_\_\_ °F Chlorides \_\_\_\_\_ ppm

(A) Initial Hydrostatic 2188  Test 1225 T-On Location 22:00  
 (B) First Initial Flow 21  Jars 250 T-Started 24:53  
 (C) First Final Flow 69  Safety Joint 75 T-Open 3:07  
 (D) Initial Shut-In 1015  Circ Sub \_\_\_\_\_ T-Pulled 6:07  
 (E) Second Initial Flow 100  Hourly Standby 1hr 100 T-Out 8:54  
 (F) Second Final Flow 95  Mileage 100RT 140 Comments \_\_\_\_\_  
 (G) Final Shut-In 950  Sampler \_\_\_\_\_  
 (H) Final Hydrostatic 2048  Straddle \_\_\_\_\_  Ruined Shale Packer \_\_\_\_\_  
 Shale Packer \_\_\_\_\_  Ruined Packer \_\_\_\_\_  
 Extra Packer \_\_\_\_\_  Extra Copies \_\_\_\_\_  
 Extra Recorder \_\_\_\_\_  
 Day Standby \_\_\_\_\_  
 Accessibility \_\_\_\_\_  
 Sub Total 1790 MP/DST Disc't \_\_\_\_\_

Approved By \_\_\_\_\_ Our Representative Jason McLanor

Trilobite Testing Inc. shall not be liable for damaged of any kind of the property or personnel of the one for whom a test is made, or for any loss suffered or sustained, directly or indirectly, through the use of its equipment, or its statements or opinion concerning the results of any test, tools lost or damaged in the hole shall be paid for at cost by the party for whom the test is made.

Thank You