

Taken 10-8-64 Effective 10-8-64 Month Day 19 Sec. 30 Twp. 19 R. 21 W
 Month Day Month Day Lease Description

Tank No.	Size	Opening Gauge				Barrels	Closing Gauge				Barrels
		Oil Level		B. S. & W.			Oil Level		B. S. & W.		
		Ft.	In.	Ft.	In.		Ft.	In.	Ft.	In.	
3bl.						1113					
Settling Tank						63					
TEST TANK	210	7	5			121					64.96

Well Data
 Top Prod. Horizon 4362 Ft. Total Depth 4398 Ft.
 Perforations 4389 to 4393 35PF Ft.
 Size of Casing 4 1/2" Set at 4409 Ft.
 Size of Tubing 2" Set at 4380 Ft.
 Size of Pump 2" x 1 1/2" x 12' Type Insect
 Gravity of Oil 39.4 Temp. 60
 Percentage of Water 0% Acid 250 2 1/2% gal. Date 9-29-64

Total Bbls. Produced = 64.96 X 3 = 195 bbls. Productivity.

Test Data
 Temporary _____ Permanent Field _____ Special _____
 Flowing _____ Swabbing _____ Pumping

R. AKS: _____

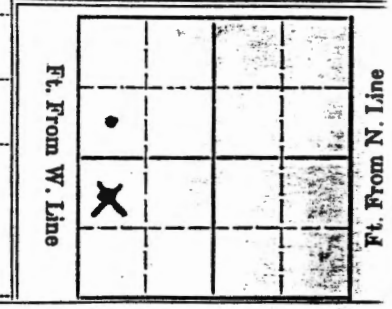
Length of Stroke 48 In. S. P. M. 18
 Pretest Information: 150 W of Center C/SW NW C/HOUSE

SEALS and USES: _____

WITNESSING: We, the undersigned, personally witnessed the gauging periods as indicated by our signatures, and certify that they were taken according to the Commission's Rules.

Gauge Witnesses	Opening Gauge	Closing Gauge
For Producer.....	Frank P. McCallister	
Offset Owner.....	L. J. C. Thirk	
For Offset Owner.....		
For State.....		

Hours pumped 12
 Bbls. Produced _____
 Tank Tables Used _____
 Est. 1.16 (Bbls. per In.)
 Checked by: _____



Physical Productivity Report to THE STATE CORPORATION COMMISSION, Conservation Division, 212 N. Market, Wichita, Kansas

Cities Service Oil Co. Moore-D #1 Schabert Ness Miss SK 2114
 Producer's Name Lease Name Well No. Pool County Producing Horizon Pipe Line (Pughaser)

Taken 2-1-66 19 Effective 2-2-66 19 Sec 30 Twp 19 R 21 E W
 Month Day Year Month Day Year Lease Description

Tank No.	Size	Opening Gauge				Barrels	Closing Gauge				Barrels
		Oil Level		B. S. & W.			Oil Level		B. S. & W.		
		Ft.	In.	Ft.	In.		Ft.	In.	Ft.	In.	
Gun Bbl.....											
Settling Tank.....											
TEST	250	2	2			72.02	5	9 1/4			191.45
											72.02
											119.43

Well Data
 Top Prod. Horizon 4326 Ft. Total Depth 4398 Ft.
 Perforations 4389-93 to Ft.
 Size of Casing 4 1/2 Set at 4409 Ft.
 Size of Tubing 2 Set at 4380 Ft.
 Size of Pump 1 1/2 Type 2 unit
 Gravity of Oil 39 Temp. 60
 Percentage of Water TRACE Acid gal. Date

Total Bbls. Produced 119 BBL Productivity

MARKS:

SEALS and USES:

WITNESSING: We, the undersigned, personally witnessed the gauging periods as indicated by our signatures, and certify that they were taken according to the Commission's Rules.

Gauge Witnesses	Opening Gauge	Closing Gauge
For Producer.....	R. C. Hallam	
For Offset Owner.....		
For State.....	Dean Dill	

Test Data
 Temporary Permanent Field Special
 Flowing Swabbing Pumping
 Length of Stroke In. S. P. M. 12

Pretest Information:
 Hours pumped 24
 Bbls. Produced
 Tank Tables Used
 Est. (Bbls. per In.)
 Checked by:
 Well Location
 Ft. From W. Line
 Ft. From N. Line

Physical Productivity Report to THE STATE CORPORATION COMMISSION, Conservation Division, 212 N. Market, Wichita, Kansas

Cities Service Oil Co Moore D-1 Schubert Miss Miss Shelly
 Producer's Name Lease Name Well No. Pool County Producing Horizon Pipe Line (Purchaser)

Taken Dec 29 1966 Effective Month Day 19 Sec. 30 Twp. 19 R. 21 W
 Month Day Month Day Lease Description

Tank No.	Size	Opening Gauge				Barrels	Closing Gauge				Barrels
		Oil Level		B. S. & W.			Oil Level		B. S. & W.		
		Ft.	In.	Ft.	In.		Ft.	In.	Ft.	In.	
Gun Bbl.....											
Storage Tank.....											
		Meter ON				135205	Mc Ferritt				135316
											135205
											111

Well Data

Top Prod. Horizon..... 4326... Ft. Total Depth..... ~~4398~~ 4398 Ft.

Perforations..... 4389..... to 4393 Ft.

Size of Casing..... 4 1/2 Set at 4409 Ft.

Size of Tubing..... 2 Set at 4380 Ft.

Size of Pump..... 1 1/2 Type Insert

Gravity of Oil..... 39 Temp 60

Percentage of Water..... ~~100~~ Acid..... gal. Date 12

Test Data

Temporary..... Permanent..... Field..... Special.....

Flowing..... Swabbing..... Pumping.....

Length of Stroke..... In. S. P. M.

Total Bbls. Produced = 111 Productivity.

REMARKS: _____

SEALS and USES: _____

WITNESSING: We, the undersigned, personally witnessed the gauging periods as indicated by our signatures, and certify that they were taken according to the Commission's Rules.

Gauge Witnesses	Opening Gauge	Closing Gauge
For Producer.....	<u>R.C. Williams</u>	
For Offset Owner.....		
For State.....	<u>G. Schubert</u>	

Pretest Information:

Hours pumped 24 1/2

Bbls. Produced 111 - 0

Tank Tables Used.....

Est. (Bbls. per In.)

Checked by:

Well Location

Ft. From W. Line

Ft. From N. Line

Physical Productivity Report to THE STATE CORPORATION COMMISSION, Conservation Division, 212 N. Market, Wichita, Kansas

CITIZEN SERVICE MOORE-D #1 Schobben Ness MISS SKELLY
 Producer's Name Lease Name Well No. Pool County Producing Horizon Pipe Line (Purchase)

Taken 2-12-68 19 Effective Month Day 19 Sec. 30 Twp. 19 R. 21 W
 Lease Description

Tank No.	Size	Opening Gauge				Barrels	Closing Gauge				Barrels
		Oil Level		B. S. & W.			Oil Level		B. S. & W.		
		Ft.	In.	Ft.	In.		Ft.	In.	Ft.	In.	
Gun Bbl.....											
Sealing Tank.....											
	METER ON					224854			METER OFF		224930
											224854
											76

Well Data	
Top Prod. Horizon.....	4326 Ft. Total Depth..... P.B. 4398 Ft.
Perforations.....	4389 to 4393 Ft.
Size of Casing.....	4 1/2 Set at 4409 Ft.
Size of Tubing.....	2 Set at 4380 Ft.
Size of Pump.....	1 1/2 Type Insect
Gravity of Oil.....	39 Temp. 60
Percentage of Water.....	0 Acid gal. Date

Test Data			
Temporary.....	Permanent.....	Field <input checked="" type="checkbox"/>	Special.....
Flowing.....	Swabbing.....	Pumping <input checked="" type="checkbox"/>	
Length of Stroke.....	39 In.	S. P. M.	13

Total Bbls. Produced= X 3= 76 Bbl. Productivity.

REMARKS:

SEALS and USES:

WITNESSING: We, the undersigned, personally witnessed the gauging periods as indicated by our signatures, and certify that they were taken according to the Commission's Rules.

Gauge Witnesses	Opening Gauge	Closing Gauge
For Producer.....	R.C. Hallam	
Offset Owner.....		
For Offset Owner.....		
For State.....	Dean Dill	

Pretest Information:
 Hours pumped..... 24
 Bbls. Produced.....
 Tank Tables Used.....
 Est. (Bbls. per In.)
 Checked by:

Well Location			

2

Physical Productivity Report to THE STATE CORPORATION COMMISSION, Conservation Division, 212 N. Market, Wichita, Kansas

Cities Service Oil Moore-D #1 Schabert Ness Ness SKelly
 Producer's Name Lease Name Well No. Pool County Producing Horizon Pipe Line (Purchaser)

Taken 1-27-70 19 Effective 19 Sec. 30 Twp. 19 R. 21 W

Tank No.	Size	Opening Gauge				Barrels	Closing Gauge				Barrels
		Oil Level		B. S. & W.			Oil Level		B. S. & W.		
		Ft.	In.	Ft.	In.		Ft.	In.	Ft.	In.	
Gun Bbl.											
Settling Tank											
METER ON						90553	METER OFF		90607		54

Well Data	
Top Prod. Horizon	4326 Ft. Total Depth P.B. 4398 Ft.
Perforations	4389 to 4393 Ft.
Size of Casing	4 1/2 Set at 4409 Ft.
Size of Tubing	2 Set at 4380 Ft.
Size of Pump	1 1/2 Type Insert
Gravity of Oil	39 Temp. 60
Percentage of Water	20 Acid gal. Date

Total Bbls. Produced = 54 Bbl. Productivity.

REMARKS:

SEALS and USES:

WITNESSING: We, the undersigned, personally witnessed the gauging periods as indicated by our signatures, and certify that they were taken according to the Commission's Rules.

Gauge Witnesses	Opening Gauge	Closing Gauge
For Producer	R.C. Hallam	
Offset Owner		
For Offset Owner		
For State	Dean Hill	

Test Data			
Temporary	Permanent	Field <input checked="" type="checkbox"/>	Special
Flowing	Swabbing	Pumping <input checked="" type="checkbox"/>	
Length of Stroke	39 In.	S. P. M.	13

Pretest Information:

Hours pumped 24
 Bbls. Produced
 Tank Tables Used
 Est. (Bbls. per In.)
 Checked by:

Well Location			
Ft. From W. Line			Ft. From N. Line

Send ORIGINAL WHITE COPY to OFFICE. Give PINK to PRODUCER. BLUE to last OFFSET WITNESS. YELLOW retained by GAUGER.—REPORT FULLY ANY INCOMPLETED POTENTIAL.

Cities Service Oil Co. Moore #1 *Schalen* *Miss*
 Producer's Name Lease Name Well No. Pool County Producing Horizon Pipe Line (Purchaser)

Taken 3 21 19 72 Effective 30 19 Sec. 30 Twp. 19 R. 21 E
 Month Day Year Month Day Lease Description

Tank No.	Size	Opening Gauge				Barrels	Closing Gauge				Barrels
		Oil Level		B. S. & W.			Oil Level		B. S. & W.		
		Ft.	In.	Ft.	In.		Ft.	In.	Ft.	In.	
Gun Bbl.....											
Settling Tank.....											
<i>Water</i>						<i>37595</i>					<i>37644</i>
											<i>37595</i>
											<i>47</i>

Well Data	
Top Prod. Horizon..	<i>4326</i> Ft. Total Depth <i>PB 4395</i> Ft.
Perforations.....	<i>4389</i> to <i>4393</i> Ft.
Size of Casing.....	<i>4 1/2</i> Set at <i>4409</i> Ft.
Size of Tubing.....	<i>2</i> Set at <i>4380</i> Ft.
Size of Pump.....	<i>1 1/2</i> Type <i>in</i>
Gravity of Oil.....	<i>39</i> Temp. <i>19</i>
Percentage of Water.....	<i>43</i> Acid _____ gal. Date _____

Total Bbls. Produced = *47 bbl.* Productivity.

R RKS: _____

Test Data			
Temporary	Permanent	<u>Field</u>	Special
Flowing	Swabbing	<u>Pumping</u>	
Length of Stroke	<i>39</i> In.	S. P. M.	<i>13</i>

SEALS and USES: _____

WITNESSING: We, the undersigned, personally witnessed the gauging periods as indicated by our signatures, and certify that they were taken according to the Commission's Rules.

Gauge Witnesses	Opening Gauge	Closing Gauge
For Producer.....	<i>R. C. Hall</i>	<i>R. C. Hall</i>
Offset Owner.....		
For Offset Owner.....		
For State.....		

Pretest Information:
 Hours pumped *24*
 Bbls. Produced _____
 Tank Tables Used _____
 Est. _____ (Bbls. per In.)
 Checked by: _____

Well Location			
Ft. From W. Line			
			Ft. From N. Line

Physical Productivity Report to THE STATE CORPORATION COMMISSION, Conservation Division, 212 N. Market, Wichita, Kansas

Cities Service Oil ~~WEEKS-1~~ 1 Schaben NESS NESS SKelly
 Producer's Name Lease Name Well No. Pool County Producing Horizon Pipe Line (Purchaser)

Taken 10-2-73 19 Effective _____ 19 Sec. 30 Twp. 19 R. 21 E W
 Month Day Month Day Lease Description

Tank No.	Size	Opening Gauge				Barrels	Closing Gauge				Barrels
		Oil Level		B. S. & W.			Oil Level		B. S. & W.		
		Ft.	In.	Ft.	In.		Ft.	In.	Ft.	In.	
						119566					119601
											119566
											35

Well Data	
Top Prod. Horizon.....	4326 Ft. Total Depth P.B. 4395 Ft.
Perforations.....	4389 to 4393 Ft.
Size of Casing.....	4 1/2 Set at 4409 Ft.
Size of Tubing.....	2 Set at 4380 Ft.
Size of Pump.....	1 1/2 Type Jussor
Gravity of Oil.....	39 Temp. 60
Percentage of Water.....	55 Acid _____ gal. Date _____

Total Bbls. Produced = ~~35~~ 35 Bbl. Productivity.

Remarks: _____

SEALS and USES: _____

WITNESSING: We, the undersigned, personally witnessed the gauging periods as indicated by our signatures, and certify that they were taken according to the Commission's Rules.

Gauge Witnesses	Opening Gauge	Closing Gauge
For Producer.....	<i>R.C. Hallen</i>	
Offset Owner.....		
For Offset Owner.....		
For State.....	<i>Dean Hill</i>	

Test Data			
Temporary.....	Permanent.....	Field <input checked="" type="checkbox"/>	Special.....
Flowing.....	Swabbing.....	Pumping <input checked="" type="checkbox"/>	
Length of Stroke.....	39 In.	S. P. M. 13	

Pretest Information:

Hours pumped..... 24
 Bbls. Produced.....
 Tank Tables Used
 Est. _____ (Bbls. per In.)
 Checked by: _____

Well Location			
Ft. From W. Line			
			Ft. From N. Line

Send ORIGINAL WHITE COPY to OFFICE. Give PINK to PRODUCER. BLUE to last OFFSET WITNESS. YELLOW retained by GAUGER.—REPORT FULLY ANY INCOMPLETED POTENTIAL.

AFFIDAVIT TO ESTABLISH TEMPORARY PRODUCTIVITY

This form must be filed in duplicate within five days after completion of the well:

- One copy to State Corporation Commission
500 Insurance Building-212 N. Market-Wichita 2, Kansas
- One copy to State Corporation Commission
925 Patton Road, Great Bend, Kansas

OPERATOR Cities Service Oil Company LOCATION OF WELL:
 LEASE Moore "D" 2086 Ft. from North line.
 WELL NUMBER 1 554 Ft. from West line.
 PURCHASER Cities Service Oil Co. OF THE NW/4 OF SEC. 30 TWP. 198 RGE. 21W
 COUNTY Ness
 FIELD Schaben PRODUCING FORMATION Misc. (Orange)
 Total Depth 4410 Top Prod. Form. _____
 Acid; Date 9-29-64 Prod. Perfs. 4388-94
 Amount 250 Gal. Prod. Perfs. _____

PRODUCTION TEST

Date 9-30-64 How Produced Swab
 Oil Produced 87 Bbl. Length of Test 11 Hours,

A F F I D A V I T

STATE OF KANSAS)
)
 COUNTY OF BARTON)

SS

Max A. Bolick of lawful age, being first duly sworn upon his oath, deposes and says:

That he is Division Supt. for Cities Service Oil Company, Operator of the Moore "D" Lease, and is duly authorized to make this affidavit for and on behalf of said operator, that Well No. 1 on said lease has been completed and was capable of producing twenty-five barrels of oil per day as of the 30th day of September, 1964, and that all information entered herein with respect to said well is true and correct.

Further affiant saith not.

(S) Max A. Bolick

Subscribed and sworn to before me this 2nd day of October, 1964

NOTARY PUBLIC
 C. M. McFarland

My Commission expires December 6, 1966