

Company Martin Explorations Lease & Well No. Lyle Schaben #1
 Elevation 2260 Kelly Bushing Mississippi Formation Mississippi Effective Pay ---- Ft. Ticket No. 6963
 Date 8/4/80 Sec. 31 Twp 19S Range 21W County Ness State Kansas
 Test Approved by Dan Reynolds Western Representative Roger Lisenby

Formation Test No. 1 Interval Tested from 4365 ft. to 4400' ft. Total Depth 4400 ft.
 Packer Depth 4360 ft. Size 6 3/4 in. Packer Depth 4365 ft. Size 6 3/4 in.
 Packer Depth - ft. Size - in. Packer Depth - ft. Size - in.
 Depth of Selective Zone Set -

Top Recorder Depth (Inside) 4393 ft. Recorder Number 6077 Cap. 4700
 Bottom Recorder Depth (Outside) 4396 ft. Recorder Number 1051 Cap. 4250
 Below Straddle Recorder Depth - ft. Recorder Number - Cap. -

Drilling Contract KAW Drilling Rig #1 Drill Collar Length 375 I. D. 2 1/4 in.
 Mud Type drispac Viscosity 70 Weight Pipe Length 305 I. D. - in.
 Weight 9.3 Water Loss 13.1 cc. Drill Pipe Length 3664 I. D. 3.8 in.
 Chlorides 18,000 P.P.M. Test Tool Length 21 ft. Tool Size 4 3/4 in.
 Jars: Make - Serial Number - Anchor Length 35 ft. Size 5 1/2 in.
 Did Well Flow? - Reversed Out - Surface Choke Size 3/4 in. Bottom Choke Size 3/4 in.
 Main Hole Size 7 7/8 in. Tool Joint Size 4 1/2 XH in.

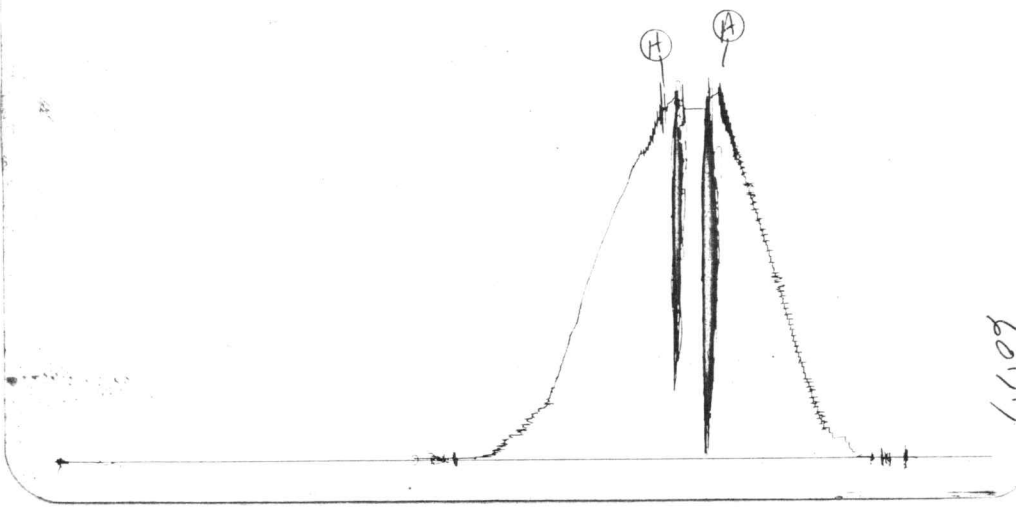
Blow: Strong blow throughout test.

Recovered 660 ft. of mud
 Recovered ft. of
 Recovered ft. of
 Recovered ft. of MSIRUN
 Recovered ft. of

Remarks: Packer failure

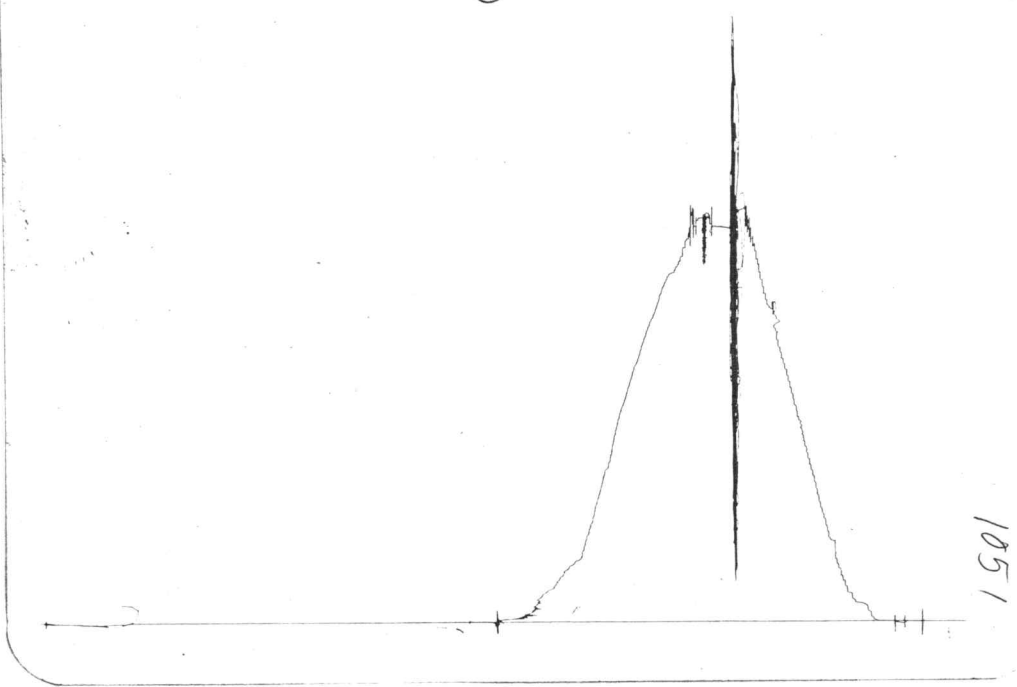
Time Set Packer(s) 2:50 ~~PM~~ ^{A.M.} Time Started Off Bottom 3:15 ~~PM~~ ^{A.M.} Maximum Temperature ?
 Initial Hydrostatic Pressure (A) 2264 P.S.I.
 Initial Flow Period Minutes (B) -- P.S.I. to (C) -- P.S.I.
 Initial Closed In Period Minutes (D) -- P.S.I.
 Final Flow Period Minutes (E) -- P.S.I. to (F) -- P.S.I.
 Final Closed In Period Minutes (G) -- P.S.I.
 Final Hydrostatic Pressure (H) 2226 P.S.I.

Kit # 6963
I



6011

Kit # 6963
O



1051

Company Martin Explorations Lease & Well No. Lyle Schaben #1
 Elevation 2260 Kelly Bushing Formation Mississippi Effective Pay ---- Ft. Ticket No. 6964
 Date 8/4/80 Sec. 31 Twp. 19S Range 21W County Ness State Kansas
 Test Approved by Dan Reynolds Western Representative Roger Lisenby

Formation Test No. 2 Interval Tested from 4385 ft. to 4400 ft. Total Depth 4400 ft.
 Packer Depth 4380 ft. Size 6 3/4 in. Packer Depth 4385 ft. Size 6 3/4 in.
 Packer Depth - ft. Size - in. Packer Depth - ft. Size - in.
 Depth of Selective Zone Set -

Top Recorder Depth (Inside) 4393 ft. Recorder Number 6077 Cap. 4700
 Bottom Recorder Depth (Outside) 4396 ft. Recorder Number 1051 Cap. 4250
 Below Straddle Recorder Depth - ft. Recorder Number - Cap. -

Drilling Contractor KAW Drilling Rig #1 Drill Collar Length 375 I. D. 2 1/4 in.
 Mud Type drispac Viscosity 70 Weight Pipe Length 305 I. D. - in.
 Weight 9.3 Water Loss 13.1 cc. Drill Pipe Length 3684 I. D. 3.8 in.
 Chlorides 18,000 P.P.M. Test Tool Length 21 ft. Tool Size 4 3/4 in.
 Jars: Make -- Serial Number - Anchor Length 15 ft. Size 5 1/2 in.
 Did Well Flow? No Reversed Out No Surface Choke Size 3/4 in. Bottom Choke Size 3/4 in.
 Main Hole Size 7 7/8 in. Tool Joint Size 4 1/2 XH in.

Blow Weak blow slowly increasing to ten inches in bucket on initial flow period. Weak blow, slowly increasing to bottom of bucket on final flow period.

Recovered 120 ft. of gas in pipe
 Recovered 480 ft. of clean gassy oil 37 gravity
 Recovered 120 ft. of watery mud slightly oil cut (60% water; 5% oil; 35% mud)
 Recovered - ft. of -
 Recovered - ft. of Chlorides 36,000 ppm

Remarks: _____

Time Set Packer(s) 8:25 ~~P.M.~~ ^{A.M.} Time Started Off Bottom 11:28 ~~P.M.~~ ^{A.M.} Maximum Temperature 126°
 Initial Hydrostatic Pressure (A) 2274 P.S.I.
 Initial Flow Period Minutes 25 (B) 102 P.S.I. to (C) 120 P.S.I.
 Initial Closed In Period Minutes 45 (D) 1123 P.S.I.
 Final Flow Period Minutes 60 (E) 222 P.S.I. to (F) 292 P.S.I.
 Final Closed In Period Minutes 48 (G) 1099 P.S.I.
 Final Hydrostatic Pressure (H) 2201 P.S.I.

WESTERN TESTING CO., INC.
Pressure Data

Date 8-4-80 Test Ticket No. 6964
 Recorder No. 6077 Capacity 4700 Location 4393 Ft.
 Clock No. ----- Elevation 2260 Kelly Bushing Well Temperature 126 °F

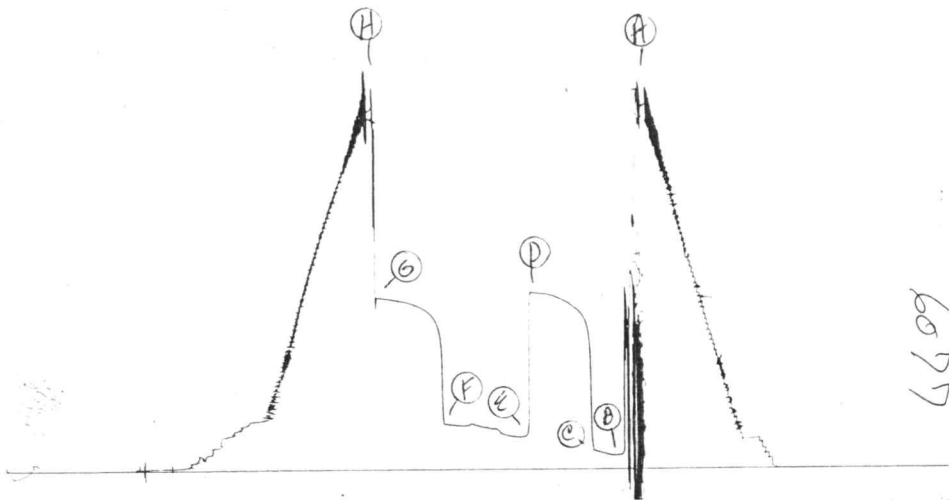
Point	Pressure		Time Given	Time Computed
A Initial Hydrostatic Mud	<u>2274</u> P.S.I.	Open Tool	<u>8:25</u> A. M	
B First Initial Flow Pressure	<u>102</u> P.S.I.	First Flow Pressure	<u>30</u> Mins.	<u>25</u> Mins.
C First Final Flow Pressure	<u>120</u> P.S.I.	Initial Closed-in Pressure	<u>45</u> Mins.	<u>45</u> Mins.
D Initial Closed-in Pressure	<u>1123</u> P.S.I.	Second Flow Pressure	<u>60</u> Mins.	<u>60</u> Mins.
E Second Initial Flow Pressure	<u>22</u> P.S.I.	Final Closed-in Pressure	<u>45</u> Mins.	<u>48</u> Mins.
F Second Final Flow Pressure	<u>292</u> P.S.I.			
G Final Closed-in Pressure	<u>1099</u> P.S.I.			
H Final Hydrostatic Mud	<u>2201</u> P.S.I.			

PRESSURE BREAKDOWN

Point Mins.	First Flow Pressure	Initial Shut-In	Second Flow Pressure	Final Shut-In			
	Breakdown: <u>5</u> Inc. of <u>5</u> mins. and a final inc. of <u>0</u> Min.	Breakdown: <u>15</u> Inc. of <u>3</u> mins. and a final inc. of <u>0</u> Min.	Breakdown: <u>12</u> Inc. of <u>5</u> mins. and a final inc. of <u>0</u> Min.	Breakdown: <u>16</u> Inc. of <u>3</u> mins. and a final inc. of <u>0</u> Min.			
	Press.	Point Minutes	Press.	Point Minutes	Press.	Point Minutes	Press.
P 1	<u>102</u>	<u>0</u>	<u>120</u>	<u>0</u>	<u>222</u>	<u>0</u>	<u>292</u>
P 2	<u>90</u>	<u>3</u>	<u>778</u>	<u>5</u>	<u>215</u>	<u>3</u>	<u>858</u>
P 3	<u>93</u>	<u>6</u>	<u>923</u>	<u>10</u>	<u>215</u>	<u>6</u>	<u>946</u>
P 4	<u>107</u>	<u>9</u>	<u>959</u>	<u>15</u>	<u>223</u>	<u>9</u>	<u>983</u>
P 5	<u>117</u>	<u>12</u>	<u>1009</u>	<u>20</u>	<u>237</u>	<u>12</u>	<u>1007</u>
P 6	<u>120</u>	<u>15</u>	<u>1029</u>	<u>25</u>	<u>265</u>	<u>15</u>	<u>1026</u>
P 7		<u>18</u>	<u>1049</u>	<u>30</u>	<u>270</u>	<u>18</u>	<u>1039</u>
P 8		<u>21</u>	<u>1056</u>	<u>35</u>	<u>277</u>	<u>21</u>	<u>1048</u>
P 9		<u>24</u>	<u>1082</u>	<u>40</u>	<u>291</u>	<u>24</u>	<u>1058</u>
P10		<u>27</u>	<u>1090</u>	<u>45</u>	<u>282</u>	<u>27</u>	<u>1067</u>
P11		<u>30</u>	<u>1101</u>	<u>50</u>	<u>282</u>	<u>30</u>	<u>1072</u>
P12		<u>33</u>	<u>1109</u>	<u>55</u>	<u>287</u>	<u>33</u>	<u>1077</u>
P13		<u>36</u>	<u>1115</u>	<u>60</u>	<u>292</u>	<u>36</u>	<u>1082</u>
P14		<u>39</u>	<u>1118</u>			<u>39</u>	<u>1087</u>
P15		<u>42</u>	<u>1121</u>			<u>42</u>	<u>1092</u>
P16		<u>45</u>	<u>1123</u>			<u>45</u>	<u>1094</u>
P17						<u>48</u>	<u>1099</u>
P18							
P19							
P20							

WY # 6964

I



6097