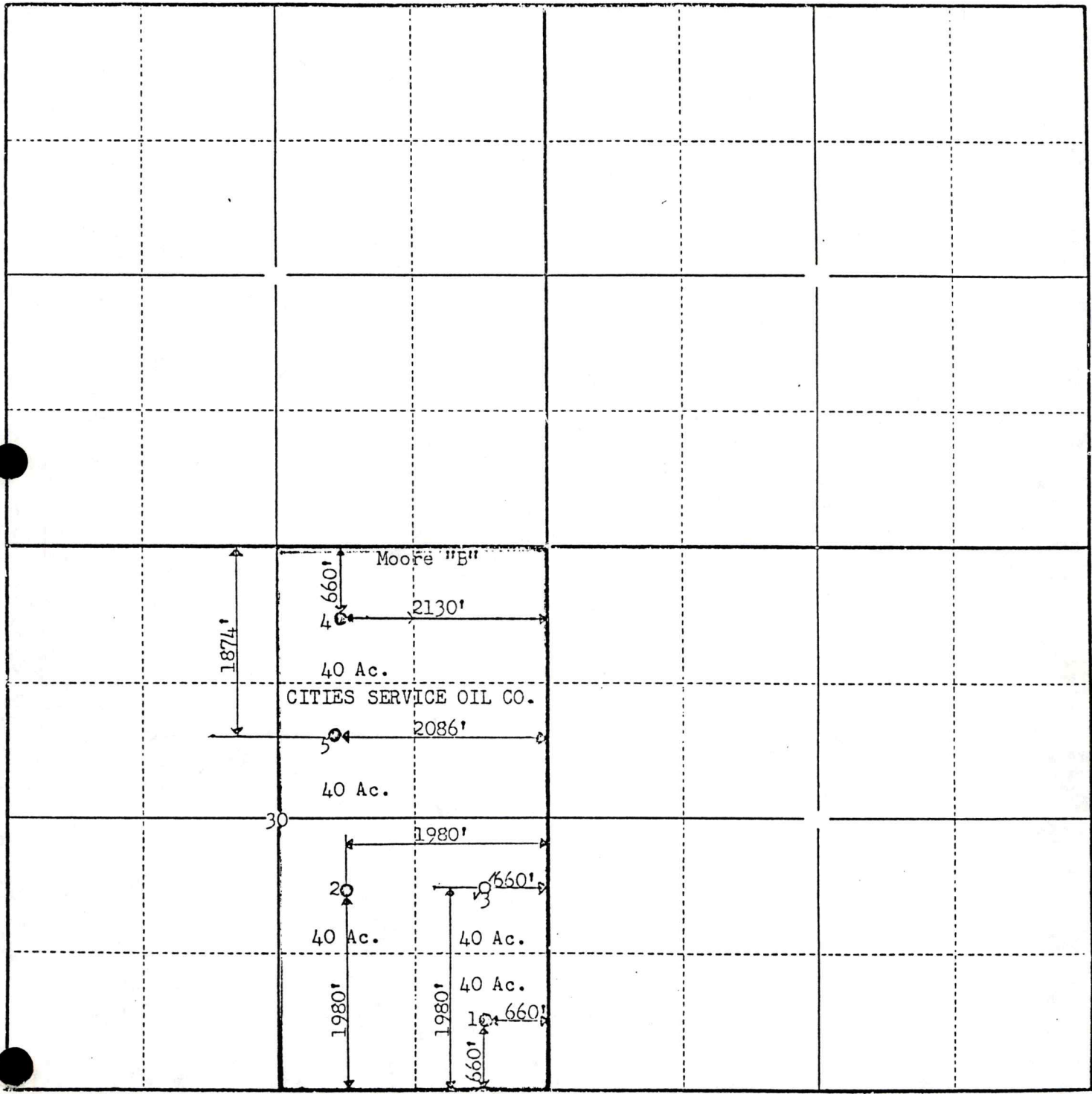


RECORDED
INDEXED
TAX MAP
FILED
JAN 10 1934
S.W. CORNER

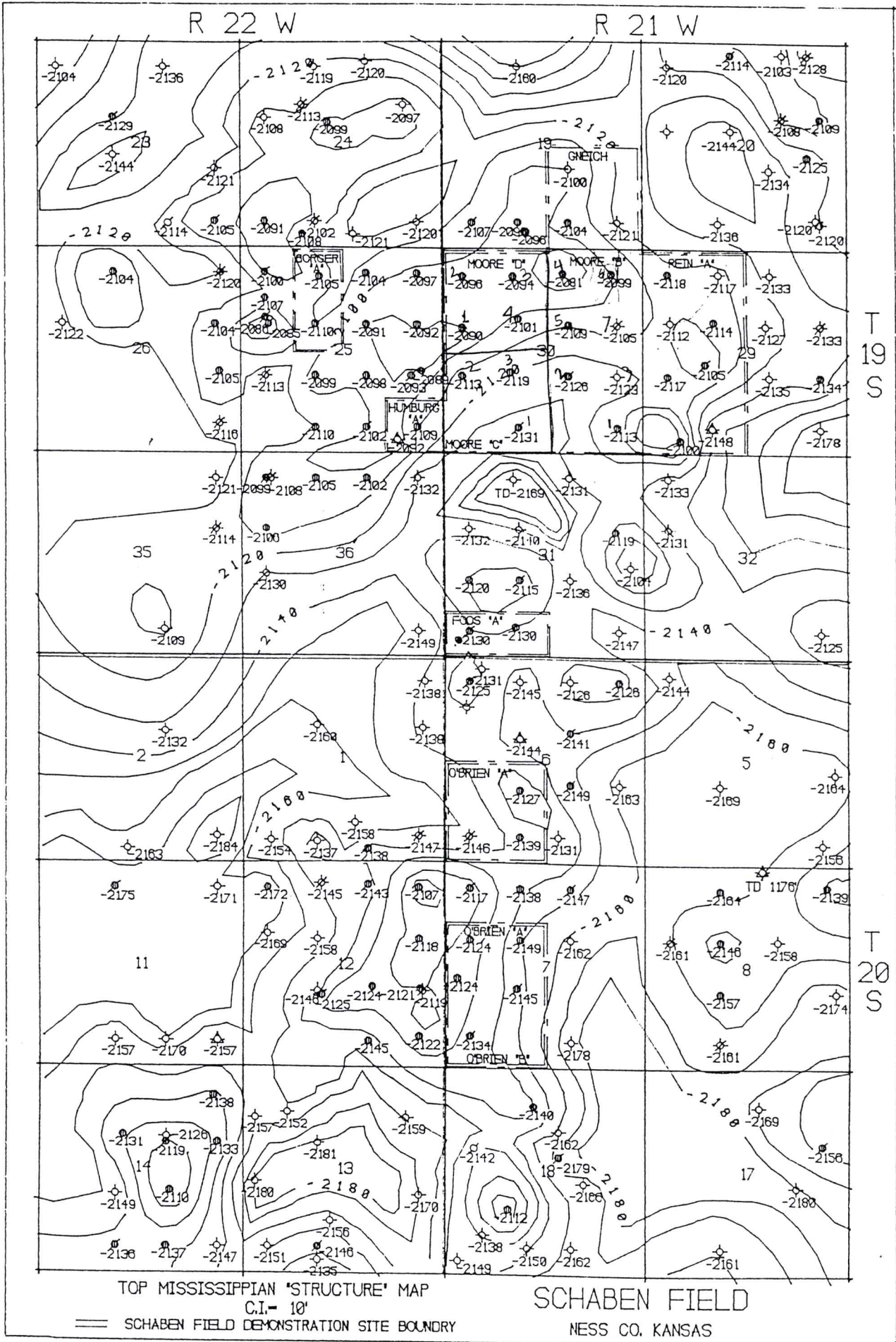
Township 19 Range 21W County LeFlore Pool Schaben-Mississippi



STATE OF KANSAS,
COUNTY OF ~~SEDGWICK~~ BARTON

I, O. C. Atkinson, Division Engineer

of Cities Service Oil Company, do hereby certify



TOP MISSISSIPPIAN 'STRUCTURE' MAP
C.I. = 10'

== SCHABEN FIELD DEMONSTRATION SITE BOUNDARY

SCHABEN FIELD

NESS CO., KANSAS