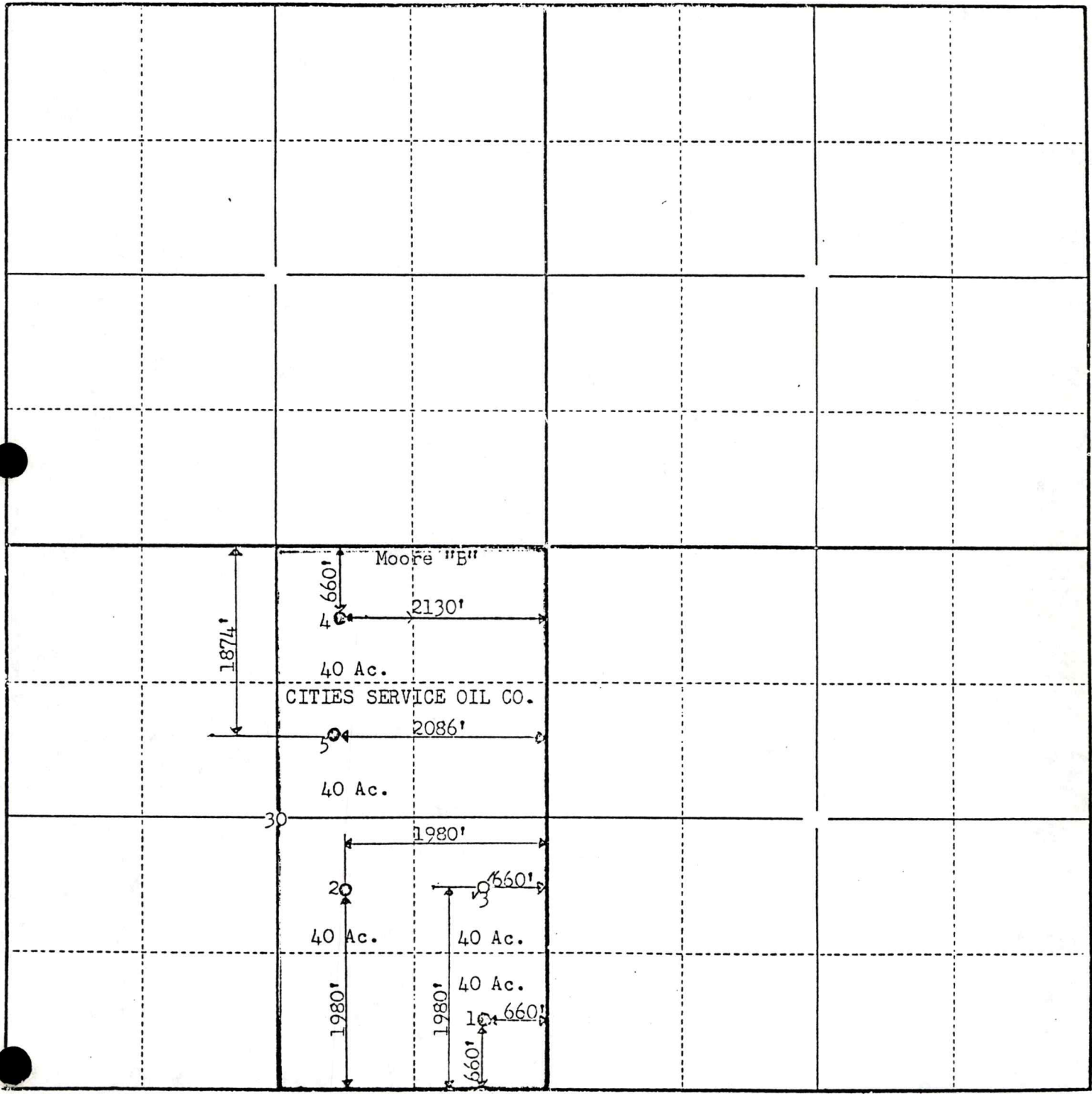


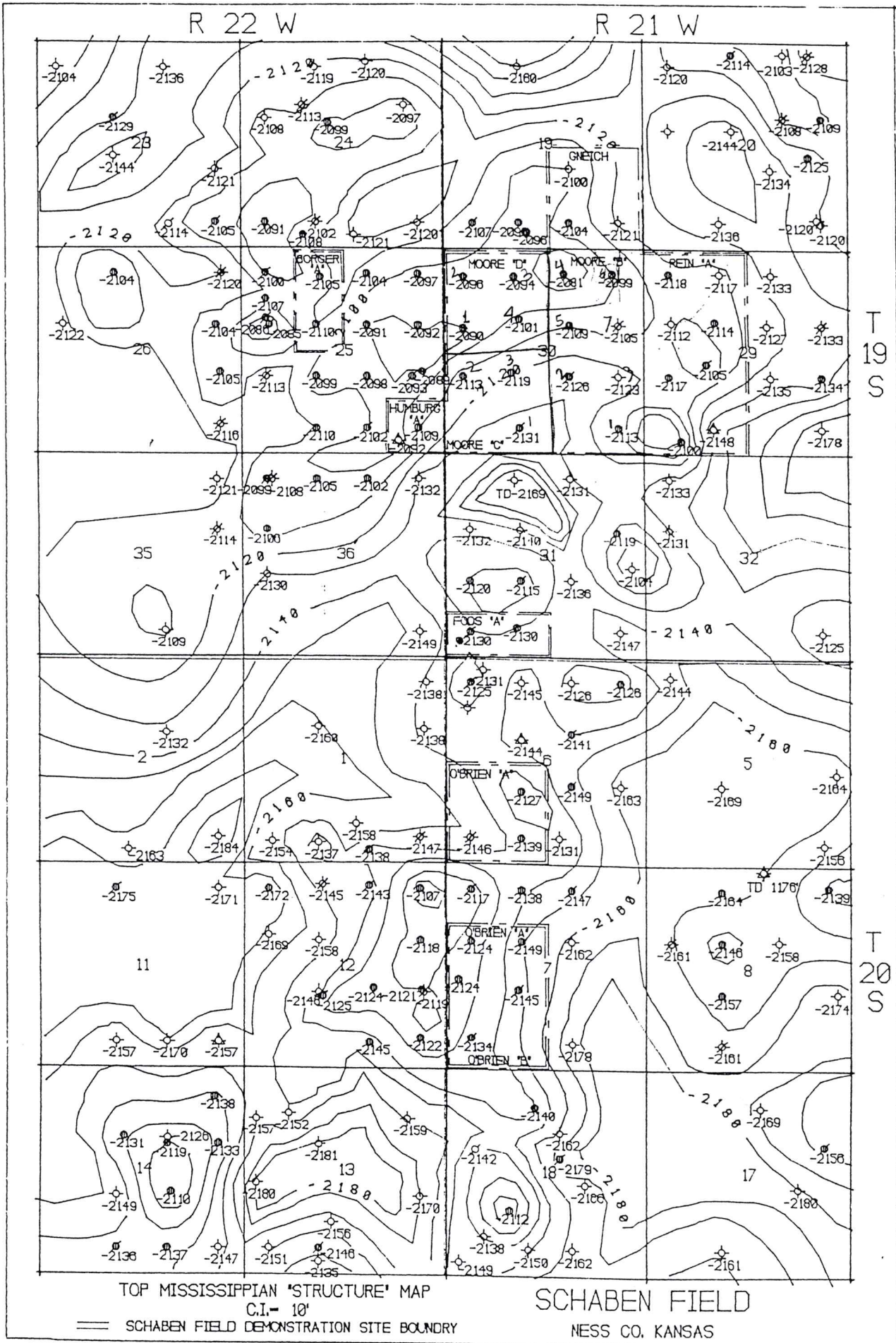
PLAT NO. 100
T. 19 N. R. 21 W. S. 1 E.
CITIES SERVICE OIL CO.
APR 19 1930

Township 19 Range 21W County SEDGWICK Pool Selmon-Mississippi



STATE OF KANSAS,
COUNTY OF ~~SEDGWICK~~ BARTON

I, O. C. Atkinson, Division Engineer
of Cities Service Oil Company, do hereby certify



TOP MISSISSIPPIAN 'STRUCTURE' MAP
C.I. = 10'

SCHABEN FIELD

== SCHABEN FIELD DEMONSTRATION SITE BOUNDARY

NESS CO. KANSAS