

WESTERN TESTING CO. INC.
SUBSURFACE PRESSURE SURVEY

DATE: 10/3/83
CUSTOMER: AMBER EXPLORATION
WELL: 1-22 TEST: 1
ELEVATION (KB): 0 FORMATION: FORT SCOTT
SECTION: 22 TOWNSHIP: 19S
RANGE: 24W COUNTY: NESS STATE: KANSAS
GAUGE SN #13240 RANGE: 4500 CLOCK: 12

INTERVAL TEST FROM: 4223 FT TO: 4256 FT TOTAL DEPTH: 4256 FT
DEPTH OF SELECTIVE ZONE: FT
PACKER DEPTH: 4218 FT SIZE: 6 5/8 IN PACKER DEPTH: 4223 FT SIZE: 6 5/8 IN
PACKER DEPTH: FT SIZE: IN PACKER DEPTH: FT SIZE: IN

DRILLING CONTRACTOR: ALLEN
MUD TYPE: STARCH VISCOSITY: 42
WEIGHT: 9.6 WATER LOSS (CC): 10.4
CHLORIDES (P.P.M.): 24000
JARS - MAKE: WTC SERIAL NUMBER: 403
DID WELL FLOW? NO REVERSED OUT? NO
DRILL COLLAR LENGTH: FT I.D.: IN
WEIGHT PIPE LENGTH: FT I.D.: IN
DRILL PIPE LENGTH: 4194 FT I.D.: 3.8 IN
TEST TOOL LENGTH: 29 FT TOOL SIZE: 5 1/2 OD IN
ANCHOR LENGTH: 33 FT SIZE: 5 1/2 OD IN
SURFACE CHOKE SIZE: 3/4 IN BOTTOM CHOKE SIZE: 3/4 IN
MAIN HOLE SIZE: 7 7/8 IN TOOL JOINT SIZE: 4 1/2 XH IN

BLOW: INITIAL FLOW PERIOD VERY WEAK THROUGHOUT.
FINAL FLOW PERIOD NO BLOW - FLUSHED
TOOL - VERY WEAK BLOW & DIED IN 15 MINUTES.

RECOVERED: 30 FT OF: MUD - FEW SPOTS OF OIL ON TOP OF TOOL.
RECOVERED: FT OF:
RECOVERED: FT OF:
RECOVERED: FT OF:
RECOVERED: FT OF:
RECOVERED: FT OF:
RECOVERED: FT OF:
RECOVERED: FT OF:
RECOVERED: FT OF:

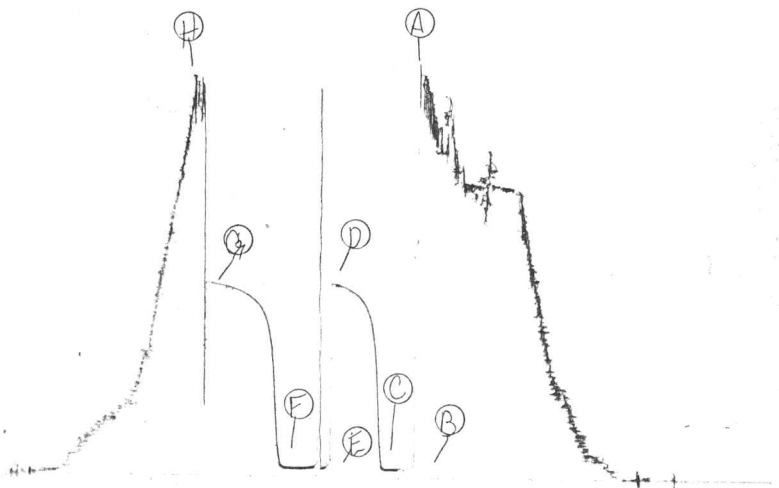
REMARKS:

TIME SET PACKER(S): 3:53 PM TIME STARTED OFF BOTTOM: 6:25 PM
WELL TEMPERATURE: 124 °F
INITIAL HYDROSTATIC PRESSURE: (A) 2272 PSI
INITIAL FLOW PERIOD MIN: 20 (B) 48 PSI TO (C) 48 PSI
INITIAL CLOSED IN PERIOD MIN: 42 (D) 1118 PSI
FINAL FLOW PERIOD MIN: 30 (E) 70 PSI TO (F) 52 PSI
FINAL CLOSED IN PERIOD MIN: 60 (G) 1118 PSI
FINAL HYDROSTATIC PRESSURE (H) 2267 PSI

#1 Test

13240

TR# 2140
I.



WESTERN TESTING CO. INC.
SUBSURFACE PRESSURE SURVEY

DATE: 10/4/83
CUSTOMER: AMBER EXPLORATION
WELL: 1-22 TEST: 2
ELEVATION (KB): 0 FORMATION: MISSISSIPPI
SECTION: 22 TOWNSHIP: 19S
RANGE: 24W COUNTY: NESS STATE: KANSAS
GAUGE SN #13240 RANGE: 4500 CLOCK: 12

INTERVAL TEST FROM: 4331 FT TO: 4348 FT TOTAL DEPTH: 4348 FT
DEPTH OF SELECTIVE ZONE: FT
PACKER DEPTH: 4326 FT SIZE: 6 5/8 IN PAKER DEPTH: 4331 FT SIZE: 6 5/8 IN
PACKER DEPTH: FT SIZE: IN PAKER DEPTH: FT SIZE: IN

DRILLING CONTRACTOR: ALLEN
MUD TYPE: STARCH VISCOSITY: 42
WEIGHT: 9.6 WATER LOSS (CC): 14.4
CHLORIDES (P.P.M.): 31000
JARS - MAKE: WTC SERIAL NUMBER: 403
DID WELL FLOW? REVERSED OUT? NO
DRILL COLLAR LENGTH: FT I.D.: IN
WEIGHT PIPE LENGTH: FT I.D.: IN
DRILL PIPE LENGTH: 4303 FT I.D.: 3.8 IN
TEST TOOL LENGTH: 29 FT TOOL SIZE: 5 1/2 OD IN
ANCHOR LENGTH: 17 FT SIZE: 5 1/2 OD IN
SURFACE CHOKE SIZE: 3/4 IN BOTTOM CHOKE SIZE: 3/4 IN
MAIN HOLE SIZE: 7 7/8 IN TOOL JOINT SIZE: 4 1/2 XH IN

BLOW: INITIAL FLOW PERIOD FAIR BLOW
INCREASED TO VERY GOOD IN 15 MINUTES.
FINAL FLOW PERIOD GOOD BLOW THROUGHOUT.

RECOVERED: 120 FT OF: GAS IN PIPE
RECOVERED: 305 FT OF: CLEAN GASSY OIL GRAVITY 39
RECOVERED: 240 FT OF: GASSY MUDDY OIL
RECOVERED: FT OF:
RECOVERED: FT OF:
RECOVERED: FT OF:
RECOVERED: FT OF:
RECOVERED: FT OF:
RECOVERED: FT OF:

REMARKS:

TIME SET PACKER(S): 10:33 AM TIME STARTED OFF BOTTOM: 2:05 PM
WELL TEMPERATURE: 126 °F
INITIAL HYDROSTATIC PRESSURE: (A) 2325 PSI
INITIAL FLOW PERIOD MIN: 30 (B) 70 PSI TO (C) 85 PSI
INITIAL CLOSED IN PERIOD MIN: 60 (D) 1065 PSI
FINAL FLOW PERIOD MIN: 45 (E) 124 PSI TO (F) 164 PSI
FINAL CLOSED IN PERIOD MIN: 75 (G) 953 PSI
FINAL HYDROSTATIC PRESSURE (H) 2328 PSI

13240

TK#2141
I.

