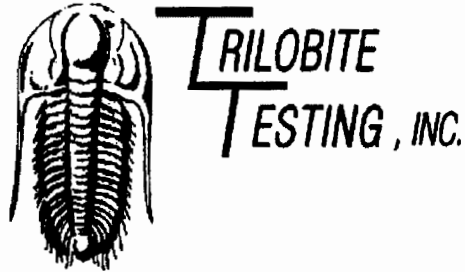


15-135-24314

7-19s-23w



DRILL STEM TEST REPORT

Prepared For: **Palomino Petroleum, Inc.**

4924 SE 84 St.
Newton, Ks. 67114-8827

ATTN: Klee R. Watchous

7-19s-23w Ness KS

Stum # 1

Start Date: 2004.12.21 @ 10:08:43

End Date: 2004.12.21 @ 17:09:13

Job Ticket #: 20915 DST #: 1

Trilobite Testing, Inc

PO Box 362 Hays, KS 67601

ph: 785-625-4778 fax: 785-625-5620



**TRILOBITE
TESTING, INC**

DRILL STEM TEST REPORT

Palomino Petroleum, Inc.
4924 SE 84 St.
New ton, Ks. 67114-8827
ATTN: Klee R. Watchous

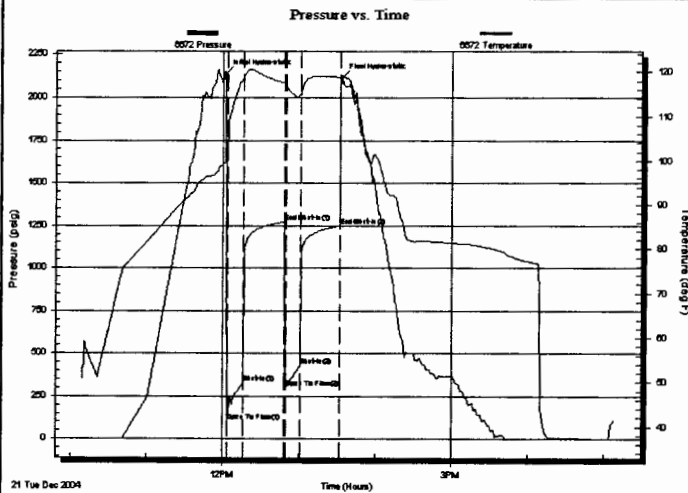
Stum # 1
7-19s-23w Ness KS
Job Ticket: 20915 **DST#: 1**
Test Start: 2004.12.21 @ 10:08:43

GENERAL INFORMATION:

Formation: **Cherokee**
Deviated: **No Whipstock:** ft (KB)
Time Tool Opened: 12:03:13
Time Test Ended: 17:09:13
Interval: **4249.00 ft (KB) To 4297.00 ft (KB) (TVD)**
Total Depth: **4297.00 ft (KB) (TVD)**
Hole Diameter: **7.88 inches** Hole Condition: **Fair**
Test Type: **Conventional Bottom Hole**
Tester: **John Schmidt**
Unit No: **31**
Reference Elevations: **2240.00 ft (KB)**
2230.00 ft (CF)
KB to GR/CF: **10.00 ft**

Serial #: 6672 **Inside**
Press@RunDepth: **426.99 psig @ 4252.00 ft (KB)** Capacity: **7000.00 psig**
Start Date: **2004.12.21** End Date: **2004.12.21** Last Calib.: **2004.12.21**
Start Time: **10:08:44** End Time: **17:09:13** Time On Btrm: **2004.12.21 @ 12:02:13**
Time Off Btrm: **2004.12.21 @ 13:33:13**

TEST COMMENT: **F-Strong B.O.B. in 1.5 min.** **ISI-Weak Surf. blow back.**
F-Strong B.O.B. in 3 min. **FSI-Weak Surf. blow back.**



PRESSURE SUMMARY

Time (Min.)	Pressure (psig)	Temp (deg F)	Annotation
0	2140.24	99.76	Initial Hydro-static
1	101.73	100.67	Open To Flow (1)
14	324.77	118.70	Shut-In(1)
46	1271.88	117.51	End Shut-In(1)
47	299.39	117.09	Open To Flow (2)
59	426.99	114.97	Shut-In(2)
90	1248.74	118.82	End Shut-In(2)
91	2119.71	119.18	Final Hydro-static

Recovery

Length (ft)	Description	Volume (bbl)
930.00	Gassy Oil 5% gas-95% oil	11.68
150.00	HMCO-40% mud-60% oil	2.10

Gas Rates

	Choke (inches)	Pressure (psig)	Gas Rate (Mcf/d)



**TRILOBITE
TESTING, INC**

DRILL STEM TEST REPORT

TOOL DIAGRAM

Palomino Petroleum, Inc.
4924 SE 84 St.
New ton, Ks. 67114-8827
ATTN: Klee R.Watchous

Stum # 1
7-19s-23w Ness KS
Job Ticket: 20915 **DST#: 1**
Test Start: 2004.12.21 @ 10:08:43

Tool Information

Drill Pipe:	Length: 4083.00 ft	Diameter: 3.80 inches	Volume: 57.27 bbl	Tool Weight: 2200.00 lb
Heavy Wt. Pipe:	Length: 0.00 ft	Diameter: 2.70 inches	Volume: 0.00 bbl	Weight set on Packer: 25000.00 lb
Drill Collar:	Length: 150.00 ft	Diameter: 2.25 inches	Volume: 0.74 bbl	Weight to Pull Loose: 60000.00 lb
			<u>Total Volume: 58.01 bbl</u>	Tool Chased 0.00 ft
Drill Pipe Above KB:	4.00 ft			String Weight: Initial 50000.00 lb
Depth to Top Packer:	4249.00 ft			Final 53000.00 lb
Depth to Bottom Packer:	ft			
Interval between Packers:	48.00 ft			
Tool Length:	68.00 ft			
Number of Packers:	2	Diameter: 6.75 inches		

Tool Comments:

Tool Description	Length (ft)	Serial No.	Position	Depth (ft)	Accum. Lengths
Change Over Sub	1.00			4230.00	
Shut In Tool	5.00			4235.00	
Hydraulic tool	5.00			4240.00	
Packer	4.00			4244.00	20.00 Bottom Of Top Packer
Packer	5.00			4249.00	
Stubb	1.00			4250.00	
Perforations	1.00			4251.00	
Change Over Sub	1.00			4252.00	
Recorder	0.00	6672	Inside	4252.00	
Blank Spacing	31.00			4283.00	
Change Over Sub	1.00			4284.00	
Perforations	10.00			4294.00	
Recorder	0.00	13308	Outside	4294.00	
Bullnose	3.00			4297.00	48.00 Bottom Packers & Anchor

Total Tool Length: 68.00



**TRILOBITE
TESTING, INC**

DRILL STEM TEST REPORT

FLUID SUMMARY

Palomino Petroleum, Inc.
4924 SE 84 St.
New ton, Ks. 67114-8827
ATTN: Klee R. Watchous

Stum # 1
7-19s-23w Ness KS
Job Ticket: 20915 **DST#: 1**
Test Start: 2004.12.21 @ 10:08:43

Mud and Cushion Information

Mud Type: Gel Chem	Cushion Type:	Oil API:	30 deg API
Mud Weight: 9.00 lb/gal	Cushion Length: ft	Water Salinity:	ppm
Viscosity: 46.00 sec/qt	Cushion Volume: bbl		
Water Loss: 10.17 in ³	Gas Cushion Type:		
Resistivity: ohm.m	Gas Cushion Pressure: psig		
Salinity: ppm			
Filter Cake: inches			

Recovery Information

Recovery Table

Length ft	Description	Volume bbl
930.00	Gassy Oil 5%gas-95%oil	11.679
150.00	HMCO-40%mud-60%oil	2.104

Total Length: 1080.00 ft Total Volume: 13.783 bbl

Num Fluid Samples: 0 Num Gas Bombs: 0 Serial #:
Laboratory Name: Laboratory Location:
Recovery Comments:

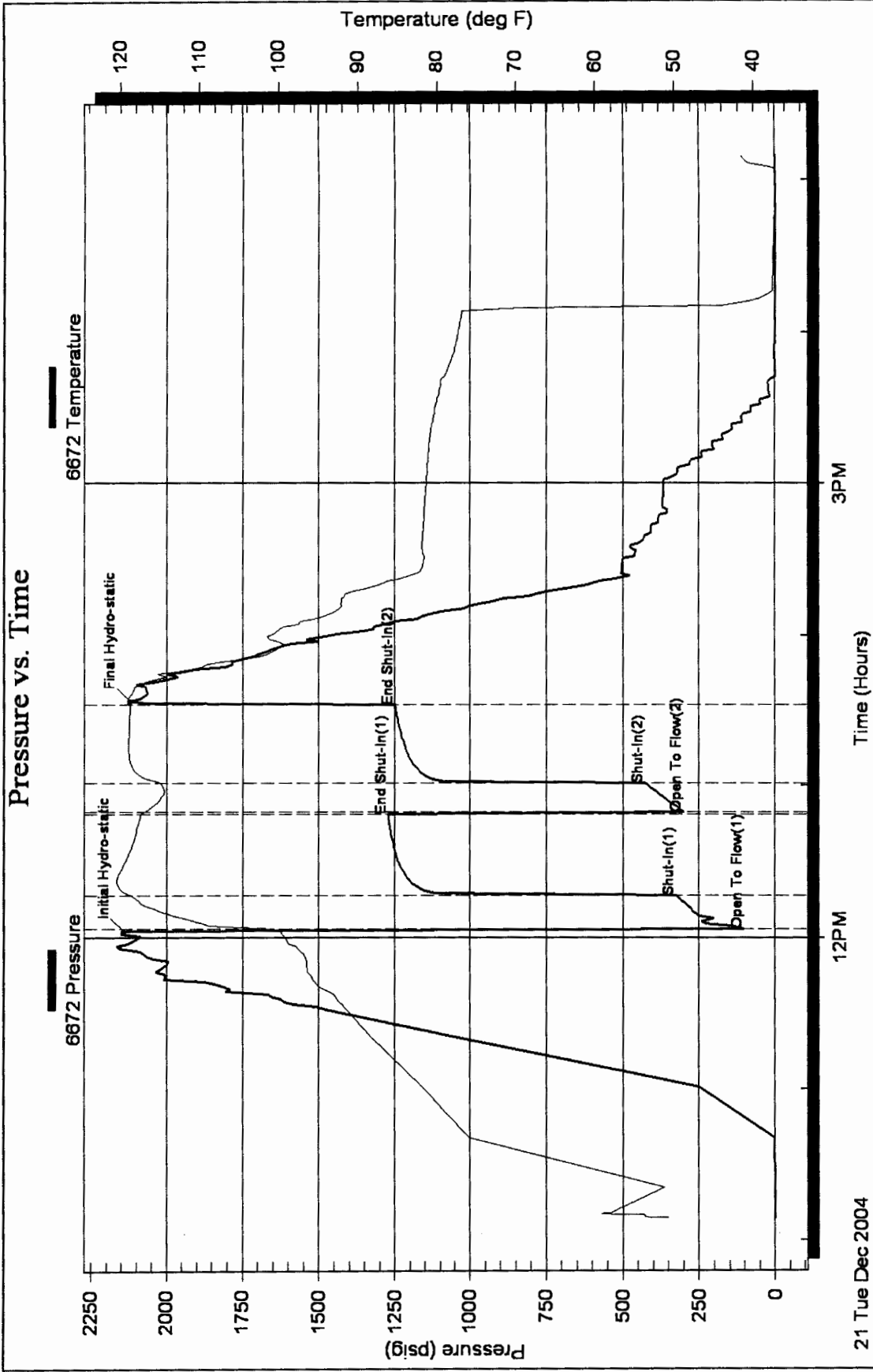
Serial #: 6672

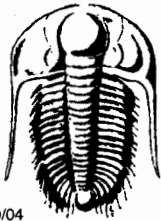
Inside

Palomino Petroleum, Inc.

7-19s-23w Ness KS

DST Test Number: 1





TRILOBITE TESTING INC.

P.O. Box 362 • Hays, Kansas 67601

INV
7060

No 20915

Test Ticket

Well Name & No. STUM #1 Test No. #1 Date 12-21-04
 Company PALOMINO PETROLEUM, INC. Zone Tested CHEROKEE
 Address 4924 SE. 84TH ST, NEWTON, KS, 67114-8827 Elevation 2240 KB 2230 GL
 Co. Rep / Geo. BOB SCHREIBER Cont. SOUTHWIND #1 Est. Ft. of Pay _____ Por. _____ %
 Location: Sec. 7 Twp. 19S Rge. 23W Co. NESS State KS
 No. of Copies _____ Distribution Sheet (Y, N) _____ Turnkey (Y, N) _____ Evaluation (Y, N) _____

Interval Tested 4249 To 4297 Initial Str Wt./Lbs. 59,000 Unseated Str Wt./Lbs. 53,000
 Anchor Length 48' Wt. Set Lbs. 25,000 Wt. Pulled Loose/Lbs. 69,000
 Top Packer Depth 4244 Tool Weight 2,200
 Bottom Packer Depth 4249 Hole Size 7 7/8" Rubber Size 6 3/4"
 Total Depth 4297 Wt. Pipe Run 0 Drill Collar Run 150
 Mud Wt. 9.4 LCM 1/2 # Vis. 46 WL 10.2 Drill Pipe Size 4 1/2 XH Ft. Run 4083
 Blow Description IF - STRONG B.O.B. 1 1/2 min. FSI - WEAK SURF. BLOW BACK
FF - STRONG B.O.B. 3 min. FSI - WEAK SURF. BLOW BACK

Recovery - Total Feet	GIP	Ft. in DC	Ft. in DP
<u>1080</u>	<u>0</u>	<u>150</u>	<u>930</u>
Rec. <u>930</u>	Feet of <u>GASSY OIL</u>	<u>5</u> %gas	<u>95</u> %oil
Rec. <u>150</u>	Feet of <u>HMCO</u>	<u>60</u> %oil	<u>40</u> %mud
Rec. _____	Feet of _____	%gas _____	%oil _____
Rec. _____	Feet of _____	%gas _____	%oil _____
Rec. _____	Feet of _____	%gas _____	%oil _____
BHT <u>118</u>	°F Gravity <u>31</u>	°API D @ <u>70</u>	°F Corrected Gravity <u>30</u>
RW _____	@ _____ °F	Chlorides _____ ppm	Recovery _____ Chlorides <u>3,300</u> ppm System

AK-1	Alpine	Recorder No.	Test
(A) Initial Hydrostatic Mud	<u>2140</u> PSI	<u>6672</u>	<u>B. HOLE</u>
(B) First Initial Flow Pressure	<u>101</u> PSI	(depth) <u>4252</u>	Jars _____
(C) First Final Flow Pressure	<u>324</u> PSI	Recorder No. <u>13308</u>	Safety Jt. _____
(D) Initial Shut-In Pressure	<u>1271</u> PSI	(depth) <u>4294</u>	Circ Sub _____
(E) Second Initial Flow Pressure	<u>299</u> PSI	Recorder No. _____	Sampler _____
(F) Second Final Flow Pressure	<u>426</u> PSI	(depth) _____	Straddle _____
(G) Final Shut-In Pressure	<u>1248</u> PSI	Initial Opening <u>15</u>	Ext. Packer _____
(Q) Final Hydrostatic Mud	<u>2119</u> PSI	Initial Shut-In <u>30</u>	Shale Packer _____
		Final Flow <u>15</u>	Ruined Packer _____
		Final Shut-In <u>30</u>	Mileage <u>RTRIP-136</u>
		T-On Location <u>09:15</u>	Sub Total: <u>1136</u>
		T-Started <u>10:08</u>	Std. By _____
		T-Open <u>12:03</u>	Other _____
		T-Pulled <u>13:33</u>	Total: _____
		T-Out <u>17:09</u>	

TRILOBITE TESTING INC. SHALL NOT BE LIABLE FOR DAMAGED OF ANY KIND OF THE PROPERTY OR PERSONNEL OF THE ONE FOR WHOM A TEST IS MADE, OR FOR ANY LOSS SUFFERED OR SUSTAINED, DIRECTLY OR INDIRECTLY, THROUGH THE USE OF ITS EQUIPMENT, OR ITS STATEMENTS OR OPINION CONCERNING THE RESULTS OF ANY TEST. TOOLS LOST OR DAMAGED IN THE HOLE SHALL BE PAID FOR AT COST BY THE PARTY FOR WHOM THE TEST IS MADE.

Approved By Bob Schreiber
 Our Representative John J. Schmidt

CHART PAGE

This is a photocopy of the actual AK-1 recorder chart

