

15-135-24487

31-195-24w

DIAMOND TESTING

P.O. Box 157

HOISINGTON, KANSAS 67544

(620) 653-7550 • (800) 542-7313

STC 21098.D275

Page 1 of 3 Pages

Company L. D. Drilling, Inc. Lease & Well No. Schlegel Trust No. 1

Elevation 2373KB Formation Mississippi Effective Pay Ft. Ticket No. 2157

Date 6-18-06 Sec. 31 Twp. 19S Range 24W County Ness State Kansas

Test Approved By Kim B. Shoemaker Diamond Representative Roger D. Friedly

Formation Test No. 1 Interval Tested from 4,390 ft. to 4,430 ft. Total Depth 4,430 ft.

Packer Depth 4,385 ft. Size 6 3/4 in. Packer Depth ft. Size in.

Packer Depth 4,390 ft. Size 6 3/4 in. Packer Depth ft. Size in.

Depth of Selective Zone Set ft.

Top Recorder Depth (Inside) 4,378 ft. Recorder Number 21098 Cap. 5,000 psi

Bottom Recorder Depth (Outside) 4,427 ft. Recorder Number 13387 Cap. 4,000 psi

Below Straddle Recorder Depth ft. Recorder Number Cap. psi

Drilling Contractor L. D. Drilling, Inc. - Rig 1 Drill Collar Length ft. I.D. in.

Mud Type Chemical Viscosity 62 Weight Pipe Length ft. I.D. in.

Weight 9.2 Water Loss 12.0 cc. Drill Pipe Length 4,358 ft. I.D. 3 1/2 in.

Chlorides 3,000 P.P.M. Test Tool Length 32 ft. Tool Size 3 1/2 - IF in.

Jars: Make Bowen Serial Number No. 1 Anchor Length 40 ft. Size 4 1/2 - FH in.

Did Well Flow? No Reversed Out No Surface Choke Size 1 in. Bottom Choke Size 5/8 in.

Main Hole Size 7 7/8 in. Tool Joint Size 4 1/2 - XH in.

Blow: 1st Open: Weak, 1/8 in., blow. Died in 22 mins. No blow back during shut-in.

2nd Open: No blow. No blow back during shut-in.

Recovered 5 ft. of drilling mud = .051300 bbls.

Recovered ft. of

Recovered ft. of

Recovered ft. of

Recovered ft. of

Remarks Tool Sample Grind Out: 100%-drilling mud with good oil specks

Time Set Packer(s) 2:35 ^{XXI.} P.M. Time Started Off Bottom 4:35 ^{XXI.} P.M. Maximum Temperature 116°

Initial Hydrostatic Pressure (A) 2079 P.S.I.

Initial Flow Period Minutes 30 (B) 5 P.S.I. to (C) 9 P.S.I.

Initial Closed In Period Minutes 30 (D) 26 P.S.I.

Final Flow Period Minutes 30 (E) 8 P.S.I. to (F) 8 P.S.I.

Final Closed In Period Minutes 30 (G) 17 P.S.I.

Final Hydrostatic Pressure (H) 2075 P.S.I.



DIAMOND TESTING
P. O. Box 157
HOISINGTON, KANSAS 67544
(800) 542-7313

FLUID SAMPLE DATA

Company L. D. Drilling, Inc.

Lease & Well No. Schlegel Trust No. 1

Date 6-18-06 Sec. 31 Twp. 19 S Range 24 W

Formation Test No. 1 Interval Tested From 4,390 ft. to 4,430 ft. Total Depth 4,430 ft.

Formation Mississippi

	<u>MUD PIT</u>	<u>RECOVERY</u>
Viscosity	<u>62</u> CP	<u>64</u> CP
Weight	<u>9.2</u>	<u>9.3</u>
Water Loss	<u>12.0</u> CC	<u>11.8</u> CC
PH Factor	<u>10.0</u>	<u>9.5</u>

	<u>RESISTIVITY</u>	<u>CHLORIDE CONTENT</u>
Recovery Water	<u>-- @ -- °F.</u>	<u>-- ppm</u>
Recovery Mud	<u>.78 @ 100 °F.</u>	<u>5,600 ppm</u>
Recovery Mud Filtrate	<u>.85 @ 106 °F.</u>	<u>4,400 ppm</u>
Mud Pit Sample	<u>.90 @ 92 °F.</u>	<u>5,200 ppm</u>
Mud Pit Sample Filtrate	<u>.98 @ 110 °F.</u>	<u>4,100 ppm</u>

Sample Taken By ROGER D. FRIEDLY

Witness By KIM B. SHOEMAKER

Remarks Pit filtrate triton dish chlorides were 3,000 Ppm
Recovery filtrate triton dish chlorides were 3,200 Ppm

GENERAL INFORMATION

Client Information:

Company: L.D. DRILLING, INC.

Contact: L.D. DAVIS

Phone: Fax: e-mail:

Site Information:

Contact: KIM SHOEMAKER

Phone: Fax: e-mail:

Well Information:

Name: SCHLEGEL TRUST #1

Operator: L.D. DRILLING, INC.

Location-Downhole: DST #1 MISSISSIPPI 4,390' - 4,430'

Location-Surface: SEC 31-19S-24W NESS COUNTY

Test Information:

Company: DIMAOND TESTING

Representative: ROGER D. FRIEDLY

Supervisor: KIM SHOEMAKER

Test Type: CONVENTIONAL Job Number:

Test Unit: NO. 1

Start Date: 2006/06/18 Start Time: 11:55:00

End Date: 2006/06/18 End Time: 18:15:00

Report Date: Prepared By:

Qualified By:

Remarks:

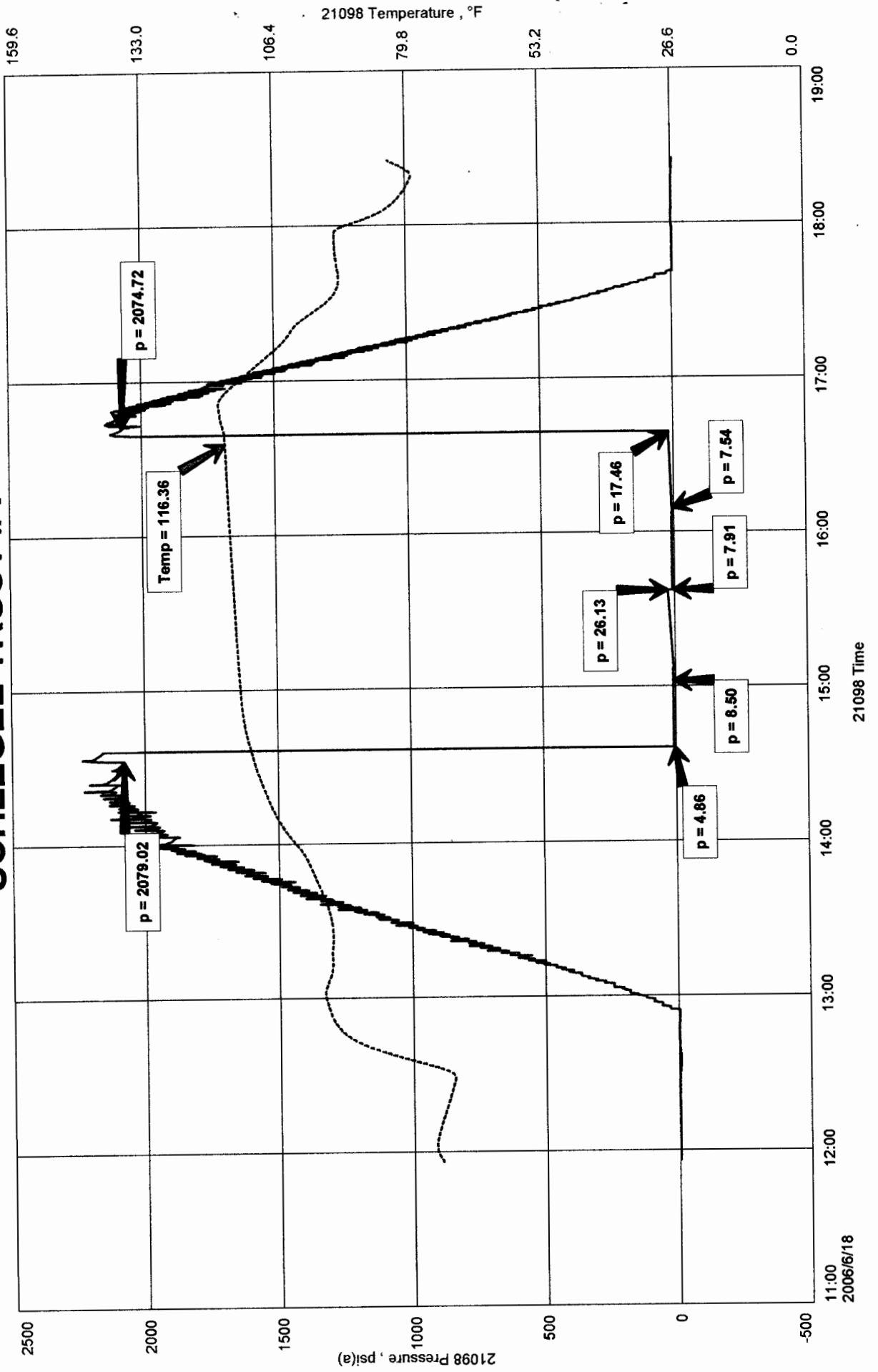
RECOVERED: 5' DRILLING MUD

TOOL SAMPLE: 100% DM WITH GOOD OIL SPECKS

SCHLEGEL TRUST #1
Formation: DST #1 MISSISSIPPI 4,390' - 4,430'
Pool: WILDCAT

L.D. DRILLING, INC.
DST #1 MISSISSIPPI 4,390' - 4,430'
Start Test Date: 2006/06/18
Final Test Date: 2006/06/18

SCHLEGEL TRUST #1

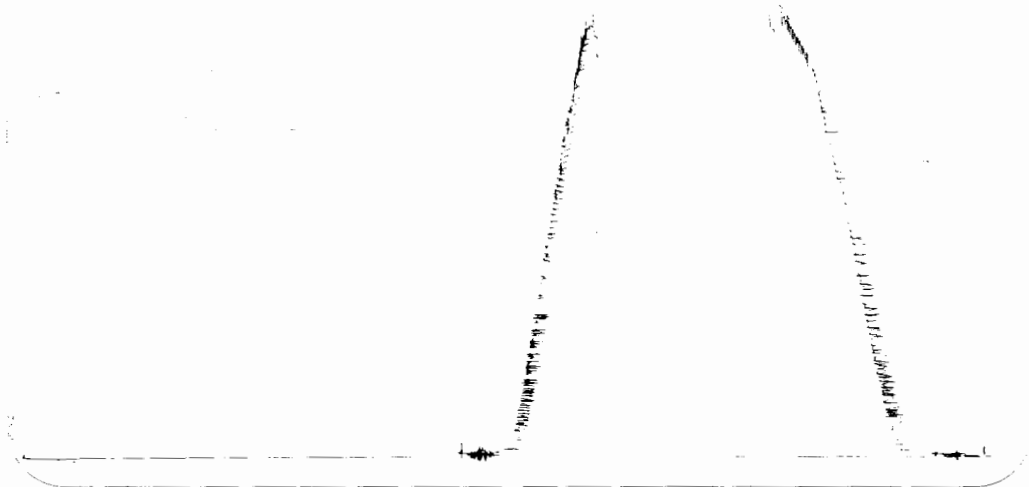


DST #1 outside 13387

MISS

4380-4430

LOL 4427



This is an actual photograph of recorder chart.

POINT	PRESSURE		Elec. Office Reading	
	Field Reading			
(A) Initial Hydrostatic Mud	2079	2079	PSI	
(B) First Initial Flow Pressure.....	5	5	PSI	
(C) First Final Flow Pressure	9	9	PSI	
(D) Initial Closed-in Pressure	26	26	PSI	
(E) Second Initial Flow Pressure.....	8	8	PSI	
(F) Second Final Flow Pressure.....	8	8	PSI	
(G) Final Closed-in Pressure.....	17	17	PSI	
(H) Final Hydrostatic Mud	2075	2075	PSI	



DIAMOND TESTING

P.O. Box 157

HOISINGTON, KANSAS 67544

(620) 653-7550 • (800) 542-7313

STC 21098.D 276

Page 1 of 3 Pages

Company L. D. Drilling, Inc. Lease & Well No. Schlegel Trust No. 1

Elevation 2373KB Formation Mississippi Effective Pay -- Ft. Ticket No. 2158

Date 6-19-06 Sec. 31 Twp. 19S Range 24W County Ness State Kansas

Test Approved By Kim B. Shoemaker Diamond Representative Roger D. Friedly

Formation Test No. 2 Interval Tested from 4,388 ft. to 4,442 ft. Total Depth 4,442 ft.

Packer Depth 4,383 ft. Size 6 3/4 in. Packer Depth -- ft. Size -- in.

Packer Depth 4,388 ft. Size 6 3/4 in. Packer Depth -- ft. Size -- in.

Depth of Selective Zone Set ft.

Top Recorder Depth (Inside) 4,376 ft. Recorder Number 21098 Cap. 5,000 psi

Bottom Recorder Depth (Outside) 4,439 ft. Recorder Number 13387 Cap. 4,000 psi

Below Straddle Recorder Depth ft. Recorder Number Cap. psi

Drilling Contractor L. D. Drilling, Inc. - Rig 1 Drill Collar Length -- ft. I.D. -- in.

Mud Type Chemical Viscosity 66 Weight Pipe Length -- ft. I.D. -- in.

Weight 9.2 Water Loss 12.0 cc. Drill Pipe Length 4,356 ft. I.D. 3 1/2 in.

Chlorides 3,400 P.P.M. Test Tool Length 32 ft. Tool Size 3 1/2 - IF in.

Jars: Make Bowen Serial Number No. 1 Anchor Length 54 ft. Size 4 1/2 - FH in.

Did Well Flow? No Reversed Out No Surface Choke Size 1 in. Bottom Choke Size 5/8 in.

Main Hole Size 7 7/8 in. Tool Joint Size 4 1/2 - XH in.

Blow: 1st Open: Good, 2 in., blow increasing. Off bottom of bucket in 8 1/2 mins. Fair, 2 in., blow back during shut-in.
2nd Open: Fair, 1 in., blow increasing. Off bottom of bucket in 8 3/4 mins. No blow back during shut-in.

Recovered 270 ft. of gas in pipe

Recovered 510 ft. of clean oil = .523260 bbls. (Gravity: 36.5 @ 60°)

Recovered 217 ft. of slightly water & heavy gas cut muddy oil = 2.226420 bbls. (Grind out: 10%-water; 18%-gas; 27%-mud; 45%-oil)

Recovered 727 ft. of TOTAL FLUID = 7.459020 bbls.

Recovered ft. of

Remarks Tool Sample Grind Out: 10%-gas; 10%-water; 24%-mud; 56%-oil

Time Set Packer(s) 3:00 ~~P.M.~~ ^{A.M.} Time Started Off Bottom 6:00 ~~P.M.~~ ^{A.M.} Maximum Temperature 123°

Initial Hydrostatic Pressure 2095 (A) P.S.I.

Initial Flow Period 30 Minutes (B) 22 P.S.I. to (C) 135 P.S.I.

Initial Closed In Period 45 Minutes (D) 1266 P.S.I.

Final Flow Period 45 Minutes (E) 144 P.S.I. to (F) 287 P.S.I.

Final Closed In Period 60 Minutes (G) 1259 P.S.I.

Final Hydrostatic Pressure 2092 (H) P.S.I.



DIAMOND TESTING
P. O. Box 157
HOISINGTON, KANSAS 67544
(800) 542-7313

FLUID SAMPLE DATA

Company L. D. Drilling, Inc.

Lease & Well No. Schlegel Trust No. 1

Date 6-19-06 Sec. 31 Twp. 19 S Range 24 W

Formation Test No. 2 Interval Tested From 4,388 ft. to 4,442 ft. Total Depth 4,442 ft.

Formation Mississippi

	<u>MUD PIT</u>	<u>RECOVERY</u>
Viscosity	<u>66</u> CP	<u>--</u> CP
Weight	<u>9.2</u>	<u>--</u>
Water Loss	<u>12.0</u> CC	<u>--</u> CC
PH Factor	<u>9.5</u>	<u>--</u>

	<u>RESISTIVITY</u>	<u>CHLORIDE CONTENT</u>
Recovery Water	<u>-- @ --</u> °F.	<u>--</u> ppm
Recovery Mud	<u>-- @ --</u> °F.	<u>--</u> ppm
Recovery Mud Filtrate	<u>-- @ --</u> °F.	<u>--</u> ppm
Mud Pit Sample	<u>1.20 @</u> 60 °F.	<u>6,000</u> ppm
Mud Pit Sample Filtrate	<u>1.30 @</u> 62 °F.	<u>5,200</u> ppm

Sample Taken By ROGER D. FRIEDLY

Witness By KIM B. SHOEMAKER

Remarks Pit filtrate triton dish chlorides were 3,400 Ppm

GENERAL INFORMATION

Client Information:

Company: L.D. DRILLING, INC.

Contact: L.D. DAVIS

Phone: Fax: e-mail:

Site Information:

Contact: KIM SHOEMAKER

Phone: Fax: e-mail:

Well Information:

Name: SCHLEGEL TRUST #1

Operator: L.D. DRILLING, INC.

Location-Downhole: DST #2 MISSISSIPPI 4,388' - 4,442'

Location-Surface: SEC 31-19S-24W NESS COUNTY

Test Information:

Company: DIAMOND TESTING

Representative: ROGER D. FRIEDLY

Supervisor: KIM SHOEMAKER

Test Type: CONVENTIONAL Job Number:

Test Unit: NO. 1

Start Date: 2006/06/19 Start Time: 00:30:00

End Date: 2006/06/19 End Time: 09:34:00

Report Date: Prepared By:

Remarks: Qualified By:

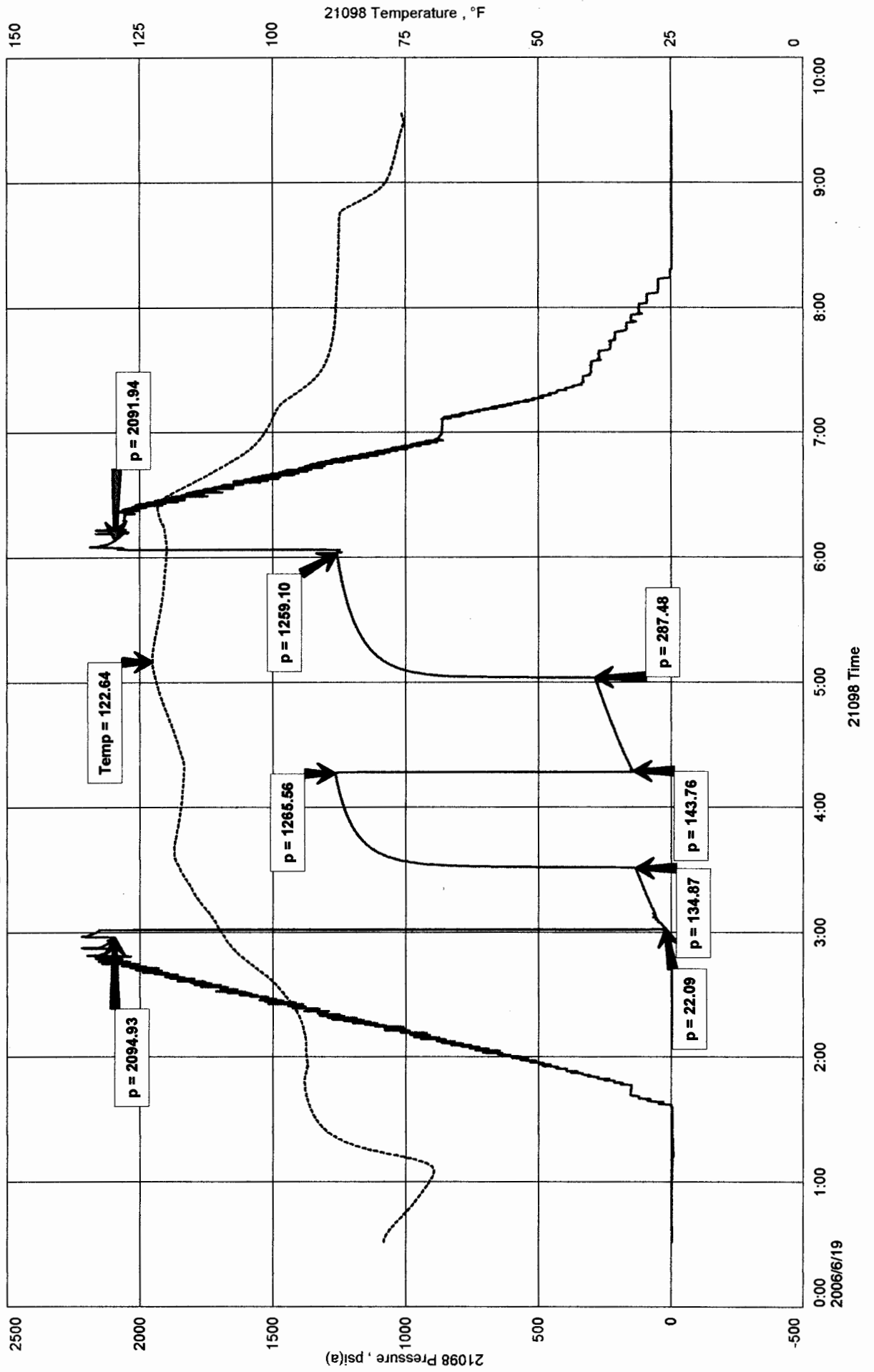
RECOVERED: 270' GAS IN PIPE
510' CLEAN OIL 36.5 GRAVITY @ 60 deg.
217' SLT WTR & HGCMW 10% WTR, 18% GAS, 27% MUD, 45% OIL
727' TOTAL FLUID

TOOL SAMPLE: 10% GAS, 10% WTR, 24% MUD, 56% OIL

L.D. DRILLING, INC.
 DST #2 MISSISSIPPI 4,388' - 4,442'
 Start Test Date: 2006/06/19
 Final Test Date: 2006/06/19

SCHLEGE TRUST #1
 Formation: DST #2 MISSISSIPPI 4,388' - 4,442'
 Pool: WILDCAT

SCHLEGE TRUST #1

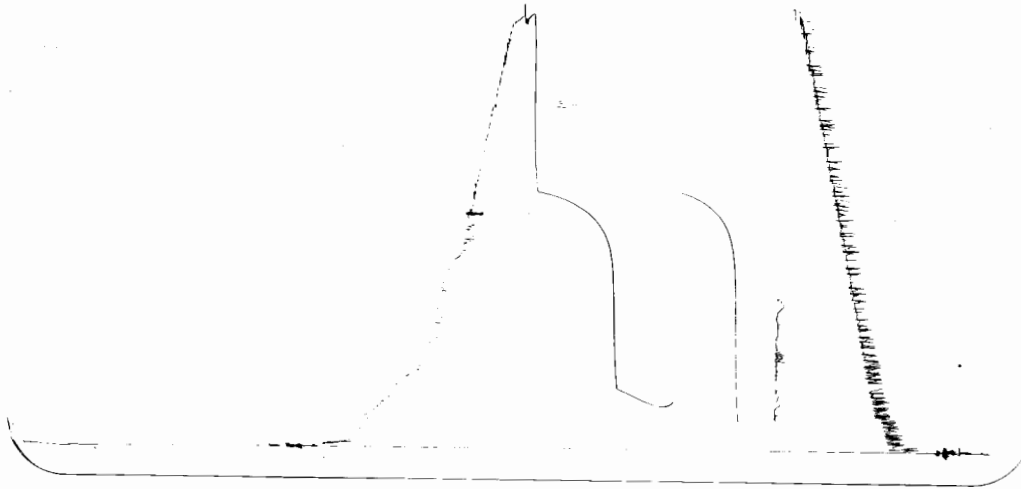


DST # 2 Outside 13387

Miss

4388-442

LOC 4439



This is an actual photograph of recorder chart.

POINT	PRESSURE		Elec. Office Reading	PSI
	Field Reading			
(A) Initial Hydrostatic Mud	2095	2095		PSI
(B) First Initial Flow Pressure	22	22		PSI
(C) First Final Flow Pressure	135	135		PSI
(D) Initial Closed-in Pressure	1266	1266		PSI
(E) Second Initial Flow Pressure	144	144		PSI
(F) Second Final Flow Pressure	287	287		PSI
(G) Final Closed-in Pressure	1259	1259		PSI
(H) Final Hydrostatic Mud	2092	2092		PSI