

15-135-22784

4-19s-24w

CRUDE OIL TESTING, INC.

DATE 3/1/85

TEST TICKET NO. 5063

Company: Sunburst Exploration Co.

Company Address: 125 N. Emporia Wichita KS 67202

Location: Sec. 4 Twp. 19S Range 24W Co. Ness

State KS

Well Name & Number: Davison #1-K

Code E19

ENGINEERING DATA	Elevation	2320 GL	Drill Pipe Length	3677	ID 3.8 "
	Mud Viscosity	47	Weight Pipe Length		
	Mud Weight	9.9	Drill Collar Length	541	ID 2.25"
	Water Loss	6.8	Top Packer Depth	4245	
	Type of Mud	Starch	Bottom Packer Depth	4250	
	Anchor Length	60	Tool Joint Size	4.5	XH
	Hole Size	7 7/8	Test Tool Size	5 1/2	
	Casing Size	8 5/8	Packer Size	6 3/4	
	Surface Choke	3/4	Reversed Out	No	
	Bottom Choke	3/4	Recorder #	13255	
	Extra Equipment		Safety joint		

REMARKS DST #1

FORMATION	Fort Scott Zone	Test Type Conventional
	Interval 4250 To 4310	Total Depth 4310
	Open 30 Shut In 45	Open 45 Shut In 60
	Packer(s) Set 02:58AM	Started Off Bottom 06:00AM
	Blow 1st Opening Fair building to 7 inches in bucket.	
	2nd Opening Fair building to 5 inches in bucket.	

RECOVERY Total Feet 340
Recovered 340 feet of Watery mud

CALCULATED RECOVERY	Gas	Oil	Water	Mud	340
	Gravity (Oil)		Test Water Chlorides		PPM
	Test Area Temperature 120F		Mud System Chlorides	42,000	PPM

		FIELD READING	OFFICE READING	
PRESSURE	(A) Initial Hydrostatic Mud	2258	2349	PSI
	(B) First Initial Flow Pressure	58	75	PSI
	(C) First Final Flow Pressure	105	120	PSI
	(D) Initial Closed-In Pressure	1146	1153	PSI
	(E) Second Initial Flow Pressure	151	149	PSI
	(F) Second Final Flow Pressure	186	207	PSI
	(G) Final Closed-In Pressure	1098	1114	PSI
	(H) Final Hydrostatic Mud	2235	2268	PSI

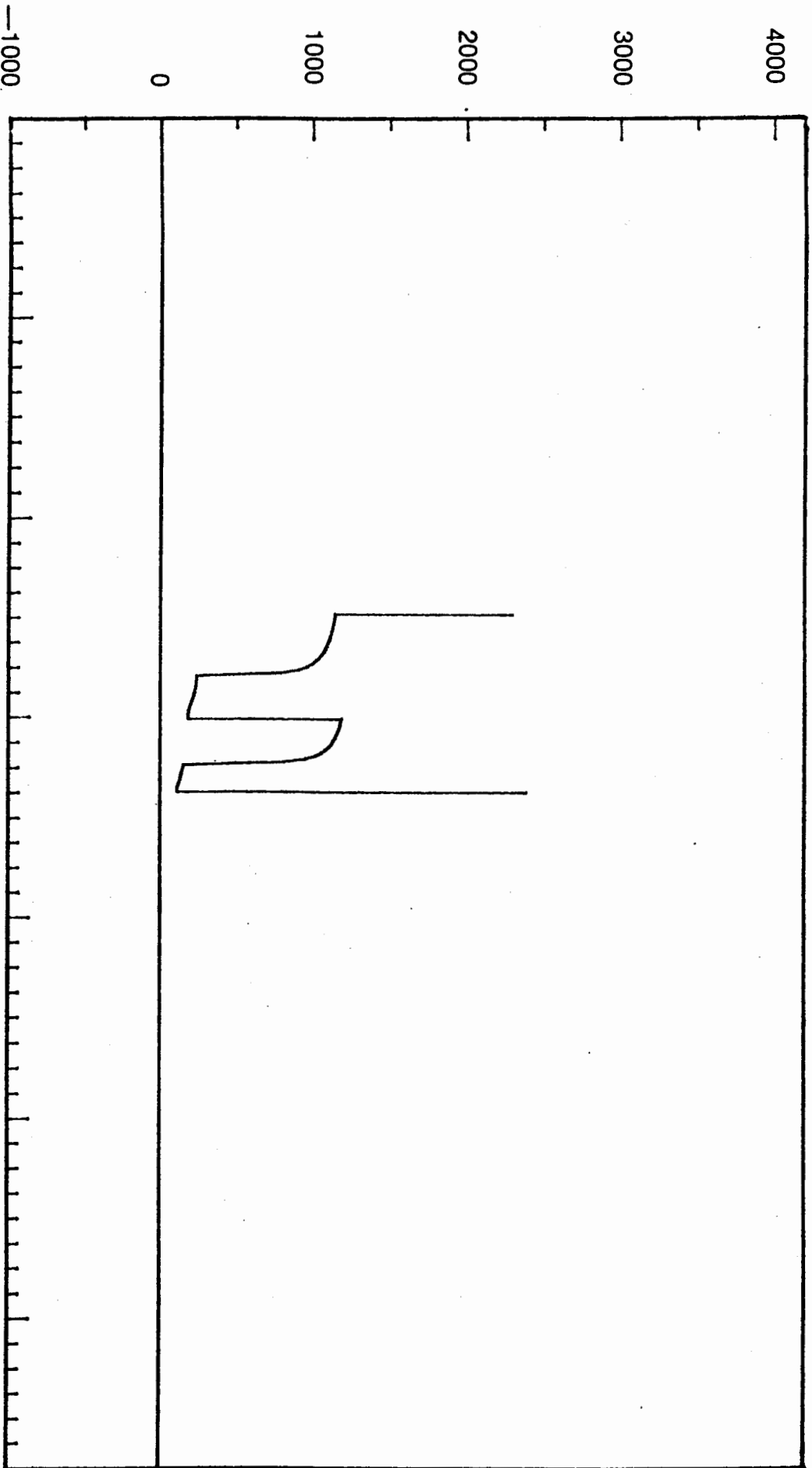
CRUDE OIL TESTING INC.

FOR: Sunburst Exploration Co. TEST 5063

DST 1

03/01/85

PRESSURE



TIME (MINUTES)

PRESSURE BREAKDOWN

TEST TICKET NO. 5063

DST Number: 1 Recorder Number: 13255 Clock Number: 25113

First Flow Pressure		Initial Shut-In		Second Flow Pressure		Final Shut-In	
Mins.	Press.	Mins.	Press.	Mins.	Press.	Mins.	Press.
0	74	0	120	0	149	0	207
3	75	3	777	3	149	3	750
6	79	6	918	6	151	6	874
9	86	9	986	9	156	9	928
12	94	12	1021	12	161	12	963
15	97	15	1050	15	168	15	986
18	102	18	1070	18	175	18	1008
21	109	21	1087	21	181	21	1024
24	114	24	1096	24	188	24	1039
27	120	27	1111	27	193	27	1048
		30	1118	30	198	30	1056
		33	1127	33	200	33	1064
		36	1134	36	202	36	1073
		39	1141	39	205	39	1078
		42	1145	42	206	42	1086
		45	1150	43	207	45	1090
		46	1152			48	1095
						51	1100
						54	1104
						57	1108
						60	1111
						63	1113

EQUIPMENT DATA

TOOL SEQUENCE REPORT

DST Number: 1

TEST TICKET NO. 5063

WELL NAME: Davison #1-K

WELL LOCATION: 4-19S-24W

Tool #	Tool	Length	I.D.	O.D.
1	Drill Pipe - 4.5"	3677.00	3.826	4.50
4	Drill Collar - 6"	541.00	2.250	6.00
8	Circulating Sub	1.00	3.000	5.00
7	Changeover Sub	2.00	3.000	5.00
9	Shut-In Tool	5.45	0.870	5.00
10	Hydraulic Tool	5.60	1.000	5.00
13	Safety Joint	2.31	3.000	5.00
14	Packer	5.35	1.530	6.75
14	Packer	5.35	1.530	6.75
6	Anchor	56.00	2.750	5.00
15	Recorder Carrier	1.00		5.00
16	Bull Plug	2.00		5.00
	Total Depth	4304.06		

CRUDE OIL TESTING, INC.

DATE 3/1/85

TEST TICKET NO. 5064

Company: Sunburst Exploration Co.
 Company Address: 125 N. Emporia Wichita KS 67202
 Location: Sec. 4 Twp. 19S Range 24W Co. Ness State KS
 Well Name & Number: Davison #1-K Code E19

ENGINEERING DATA	Elevation	2320 GL	Drill Pipe Length	3761	ID 3.8 "
	Mud Viscosity	41	Weight Pipe Length		
	Mud Weight	9.8	Drill Collar Length	541	ID 2.25"
	Water Loss	8.4	Top Packer Depth	4323	
	Type of Mud	Starch	Bottom Packer Depth	4328	
	Anchor Length	39	Tool Joint Size	4.5 XH	
	Hole Size	7 7/8	Test Tool Size	5 1/2	
	Casing Size	8 5/8	Packer Size	6 3/4	
	Surface Choke	3/4	Reversed Out	No	
	Bottom Choke	3/4	Recorder #	13255	
	Extra Equipment		Safety joint		

REMARKS DST #2
 Flushed tool 10 min. into 2nd open period.

FORMATION Conglomerate Zone Test Type Conventional
 Interval 4328 To 4367 Total Depth 4367
 Open 30 Shut In 30 Open 30 Shut In 30
 Packer(s) Set 09:58PM Started Off Bottom 12:00AM
 Blow 1st Opening Weak blow died in 23 min.
 2nd Opening No blow, flushed tool, initial surge only.

RECOVERY Total Feet 25
 Recovered 25 feet of Mud - slight show of oil in tool

CALCULATED RECOVERY Gas Oil Water Mud 25
 Gravity (Oil) Test Water Chlorides PPM
 Test Area Temperature 118F Mud System Chlorides 47,000 PPM

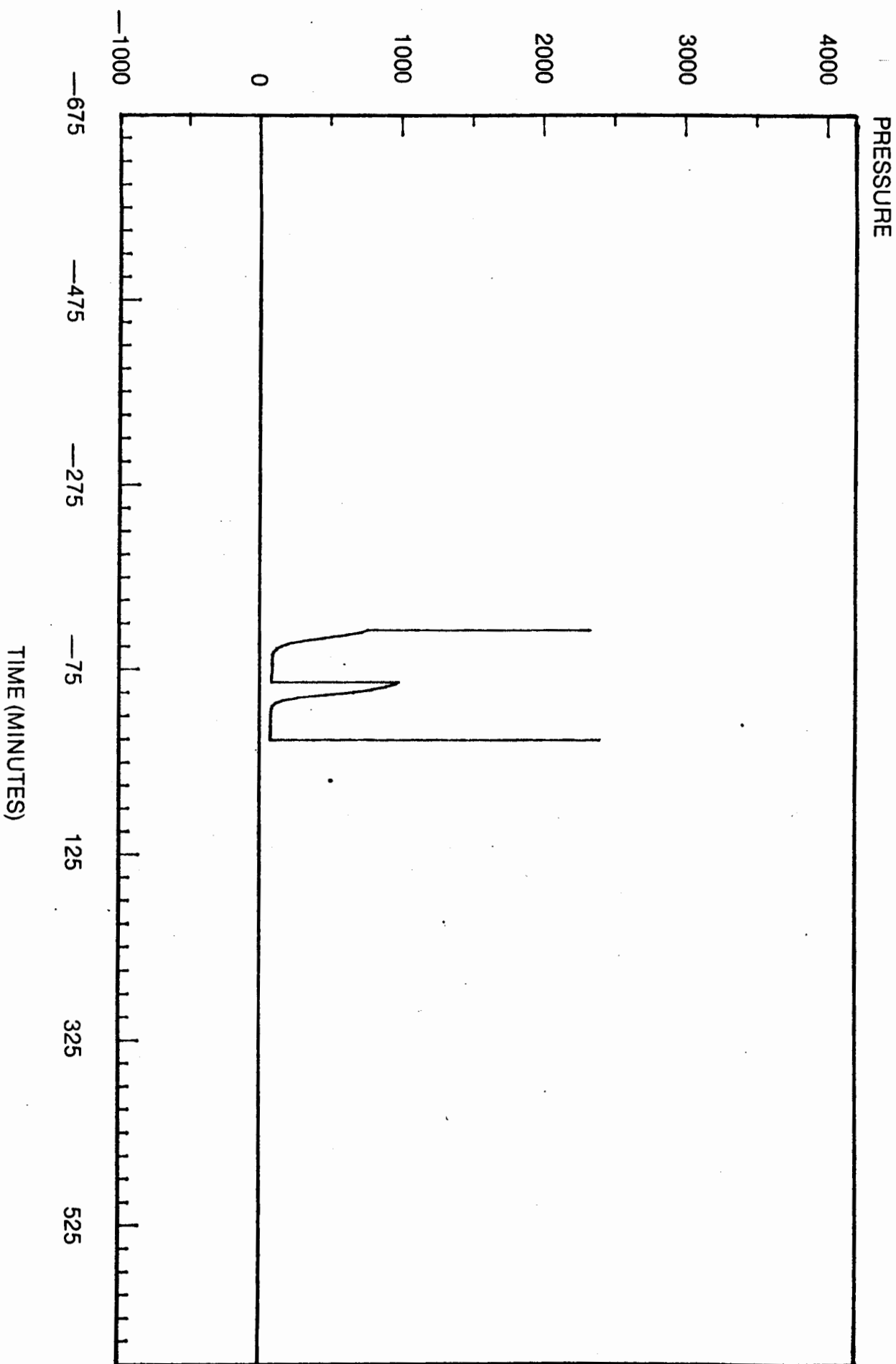
		FIELD READING	OFFICE READING	
PRESSURE	(A) Initial Hydrostatic Mud	2327	2356	PSI
	(B) First Initial Flow Pressure	35	36	PSI
	(C) First Final Flow Pressure	35	43	PSI
	(D) Initial Closed-In Pressure	940	940	PSI
	(E) Second Initial Flow Pressure	46	48	PSI
	(F) Second Final Flow Pressure	46	56	PSI
	(G) Final Closed-In Pressure	721	732	PSI
	(H) Final Hydrostatic Mud	2304	2293	PSI

CRUDE OIL TESTING INC.

FOR: Sunburst Exploration Co. TEST 5064

DST 2

03/01/85



PRESSURE BREAKDOWN

TEST TICKET NO. 5064

DST Number: 2 Recorder Number: 13255 Clock Number: 25113

First Flow Pressure		Initial Shut-In		Second Flow Pressure		Final Shut-In	
Mins.	Press.	Mins.	Press.	Mins.	Press.	Mins.	Press.
0	36	0	43	0	47	0	55
3	37	3	46	3	48	3	68
6	38	6	53	6	48	6	87
9	40	9	75	9	51	9	120
12	40	12	125	12	53	12	170
15	40	15	231	15	54	15	278
18	40	18	433	18	54	18	427
21	41	21	627	21	55	21	577
24	41	24	757	24	55	24	689
27	41	27	853	27	55	27	731
30	43	30	924	30	55		
		32	940				

EQUIPMENT DATA

TOOL SEQUENCE REPORT

DST Number: 2

TEST TICKET NO. 5064

WELL NAME: Davison #1-K

WELL LOCATION: 4-19S-24W

Tool #	Tool	Length	I.D.	O.D.
1	Drill Pipe - 4.5"	3761.00	3.826	4.50
4	Drill Collar - 6"	541.00	2.250	6.00
8	Circulating Sub	1.00	3.000	5.00
7	Changeover Sub	2.00	3.000	5.00
9	Shut-In Tool	5.45	0.870	5.00
10	Hydraulic Tool	5.60	1.000	5.00
13	Safety Joint	2.31	3.000	5.00
14	Packer	5.35	1.530	6.75
14	Packer	5.35	1.530	6.75
6	Anchor	35.00	2.750	5.00
15	Recorder Carrier	1.00		5.00
16	Bull Plug	2.00		5.00
	Total Depth	4367.06		

CRUDE OIL TESTING, INC.

DATE 3/2/85

TEST TICKET NO. 5065

Company: Sunburst Exploration Co.
 Company Address: 125 N. Emporia Wichita KS 67202
 Location: Sec. 4 Twp. 19S Range 24W Co. Ness State KS
 Well Name & Number: Davison #1-K Code E19

ENGINEERING DATA	Elevation 2320 GL	Drill Pipe Length 3762	ID 3.8 "
	Mud Viscosity 47	Weight Pipe Length	
	Mud Weight 9.8	Drill Collar Length 541	ID 2.25"
	Water Loss 10.4	Top Packer Depth 4324	
	Type of Mud Starch	Bottom Packer Depth 4329	
	Anchor Length 56	Tool Joint Size 4.5 XH	
	Hole Size 7 7/8	Test Tool Size 5 1/2	
	Casing Size 8 5/8	Packer Size 6 3/4	
	Surface Choke 3/4	Reversed Out No	
	Bottom Choke 3/4	Recorder # 13255	
	Extra Equipment	Safety joint	

REMARKS DST #3

FORMATION	Mississippi Zone	Test Type Conventional
	Interval 4329 To 4385	Total Depth 4385
	Open 30 Shut In 30	Open 30 Shut In 30
	Packer(s) Set 11:43AM	Started Off Bottom 01:45PM
	Blow 1st Opening Weak blow died in 27 min.	
	2nd Opening Weak blow died in 8 min.	

RECOVERY Total Feet 61
 Recovered 61 feet of Mud - slight show of oil in tool

CALCULATED RECOVERY	Gas	Oil	Water	Mud	61
	Gravity (Oil)		Test Water Chlorides		PPM
	Test Area Temperature 120F		Mud System Chlorides	45,000	PPM

		FIELD READING	OFFICE READING	
PRESSURE	(A) Initial Hydrostatic Mud	2350	2369	PSI
	(B) First Initial Flow Pressure	46	51	PSI
	(C) First Final Flow Pressure	46	58	PSI
	(D) Initial Closed-In Pressure	1031	1043	PSI
	(E) Second Initial Flow Pressure	58	64	PSI
	(F) Second Final Flow Pressure	58	70	PSI
	(G) Final Closed-In Pressure	928	937	PSI
	(H) Final Hydrostatic Mud	2327	2270	PSI

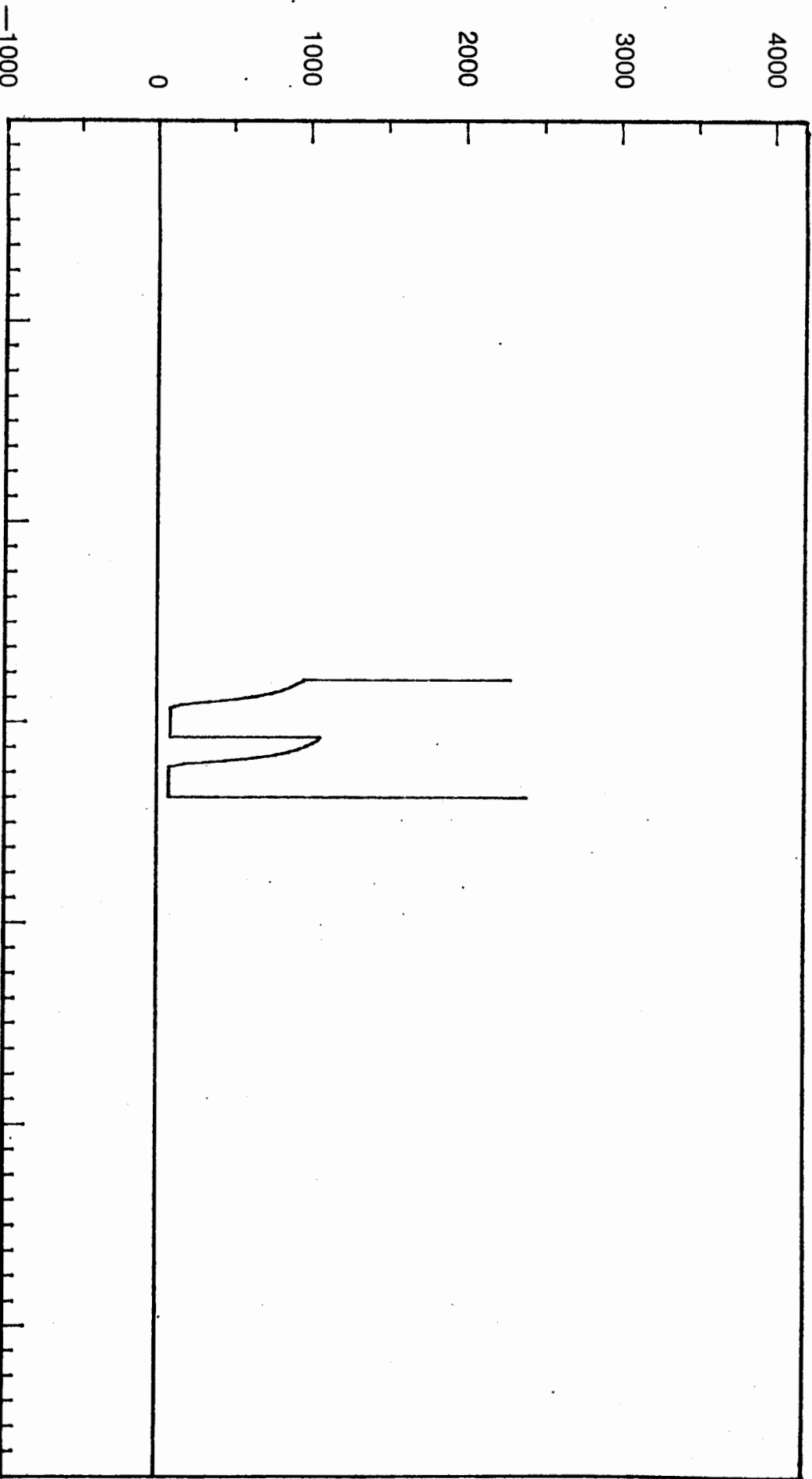
CRUDE OIL TESTING INC.

FOR: Sunburst Exploration Co. TEST 5065

DST 3

03/01/85

PRESSURE



TIME (MINUTES)

PRESSURE BREAKDOWN

TEST TICKET NO. 5065

DST Number: 3 Recorder Number: 13255 Clock Number: 25113

First Flow Pressure		Initial Shut-In		Second Flow Pressure		Final Shut-In	
Mins.	Press.	Mins.	Press.	Mins.	Press.	Mins.	Press.
0	51	0	58	0	64	0	69
3	52	3	157	3	65	3	137
6	54	6	426	6	66	6	321
9	54	9	608	9	67	9	506
12	55	12	753	12	67	12	639
15	55	15	838	15	67	15	734
18	55	18	905	18	67	18	804
21	55	21	955	21	67	21	850
24	55	24	996	24	68	24	890
27	57	27	1029	27	69	27	931
30	58	30	1042	29	69	29	936

EQUIPMENT DATA
TOOL SEQUENCE REPORT

DST Number: 3

TEST TICKET NO. 5065

WELL NAME: Davison #1-K

WELL LOCATION: 4-19S-24W

Tool #	Tool	Length	I.D.	O.D.
1	Drill Pipe - 4.5"	3762.00	3.826	4.50
4	Drill Collar - 6"	541.00	2.250	6.00
8	Circulating Sub	1.00	3.000	5.00
7	Changeover Sub	2.00	3.000	5.00
9	Shut-In Tool	5.45	0.870	5.00
10	Hydraulic Tool	5.60	1.000	5.00
13	Safety Joint	2.31	3.000	5.00
14	Packer	5.35	1.530	6.75
14	Packer	5.35	1.530	6.75
6	Anchor	52.00	2.750	5.00
15	Recorder Carrier	1.00		5.00
16	Bull Plug	2.00		5.00
	Total Depth	4385.06		