

Company Palomino Petroleum, Inc.  
Address 4924 SE 84th St.  
City Newton, KS 67114  
Contact Nick Gerstner

Lease Name Felzien  
Lease # 1  
Legal Desc NW-SW-SE-NE  
Section 35  
Township 19S  
County Ness  
Drilling Cont WW Drilling, LLC Rig #6  
Job Ticket 2155  
Range 25W  
State KS

Comments

GENERAL INFORMATION

Test # 1  
Tester Tim Venters  
Test Date 6/13/2011  
Test Type Conventional Bottom Hole  
Successful Test  
Number of Packers 2.0  
Packer Size 6 3/4

Mud Type Gel Chem  
Mud Weight 9.0  
Mud Viscosity 55.0  
Mud Chlorides 2800  
Mud Filtrate 6.4

Drill Collar Len 124.0  
Weight Pipe Len 0

Formation Marmaton  
Interval Top 4140.0  
Bottom 4275.0  
Anchor Len Below 135.0  
Between 0  
Total Depth 4275.0

Flow Type Weak 1/4" blow at start of initial flow period, building to 1/2" in about 5 min, where it held the rest of the period. Very weak surface blow throughout final flow period. Times: 30, 30, 30, 30.

Chokes 3/4  
Hole Size 7 7/8  
Top Recorder # W1119  
Mid Recorder # W1022  
Bott Recorder # 13310

Mileage 164  
Standby Time 0  
Approved By  
Extra Equipmnt Jars & Safety joint  
Time on Site 9:00 PM  
Tool Picked Up 2:25 AM  
Tool Layed Dwn 7:45 AM

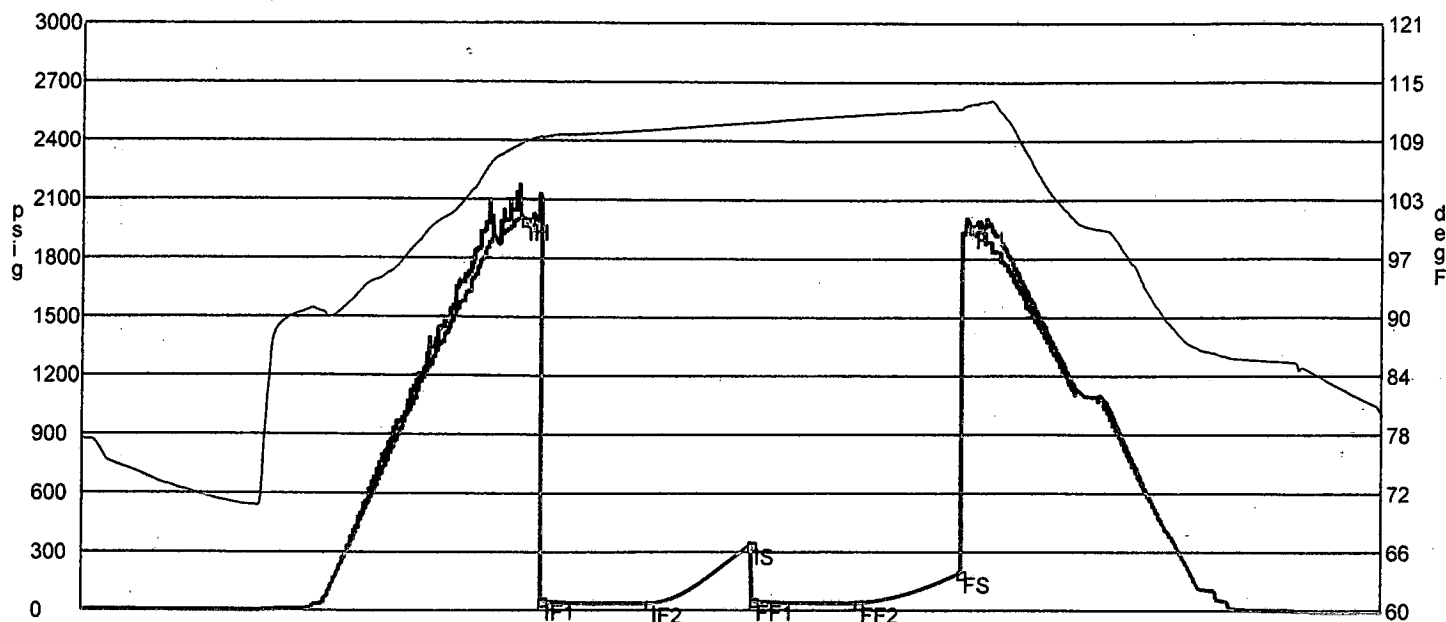
Elevation 2386.00  
Kelley Bushings 2391.00

Start Date/Time 6/13/2011 11:34 AM  
End Date/Time 6/13/2011 5:46 PM

RECOVERY

Net Description	Gas		Oil		Water		Mud
	%	0ft	%	0ft	%	0ft	
0 Mud	0%	0ft	0%	0ft	0%	0ft	100% 10ft
0 ST Fluids	0						

RECEIVED  
SEP 12 2011  
KCC WICHITA



	Date	Time	Pressure	Temp	
IH	6/13/2011 1:40:00 PM	2.1	1989.15	108.643	Initial Hydro-static
IF1	6/13/2011 1:45:20 PM	2.188889	47.758	109.017	Initial Flow (1)
IF2	6/13/2011 2:16:10 PM	2.702778	31.282	109.861	Initial Flow (2)
IS	6/13/2011 2:45:30 PM	3.191667	334.971	110.671	Initial Shut-In
FF1	6/13/2011 2:46:10 PM	3.202778	45.944	110.647	Final Flow (1)
FF2	6/13/2011 3:16:20 PM	3.705556	32.884	111.479	Final Flow (2)
FS	6/13/2011 3:45:40 PM	4.194444	189.771	112.122	Final Shut-In
FH	6/13/2011 3:48:40 PM	4.244444	1957.416	112.586	Final Hydro-static

**GAS FLOWS**

Min Into IFP   Min Into FFP   Gas Flows   Pressure   Choke

RECEIVED  
 SEP 12 2011  
 KCC WICHITA

Company **Palomino Petroleum, Inc.**  
 Address **4924 SE 84th St.**  
 CSZ **Newton, KS 67114**  
 Attn. **Nick Gerstner**

Lease Name **Felzien**  
 Lease # **1**  
 Legal Desc **NW-SW-SE-NE** Job Ticket **2155**  
 Section **35** Range **25W**  
 Township **19S**  
 County **Ness** State **KS**  
 Drilling Cont **WW Drilling, LLC Rig #6**

Comments

**GENERAL INFORMATION**

Test # 2 Test Date **6/14/2011**  
 Tester **Tim Venters**  
 Test Type **Conventional Bottom Hole Successful Test**  
 # of Packers **2.0** Packer Size **6 3/4**

Mud Type **Gel Chem**  
 Mud Weight **9.1** Viscosity **62.0**  
 Filtrate **6.4** Chlorides **2200**

Drill Collar Len **124.0**  
 Wght Pipe Len **0**

Formation **Mississippian**  
 Interval Top **4439.0** Bottom **4453.0**  
 Anchor Len Below **14.0** Between **0**  
 Total Depth **4453.0**  
 Blow Type **Weak 1/2" blow at start of initial flow period, building, reaching bottom of bucket in 13 1/2 min. Very weak surface blow back at start of intial shut-in period, lasting about 15-20 min. Weak surface blow at start of final flow period, building, reaching bottom of bucket in 19 min. Weak surface blow back throughout final shut-in period. Oil Gravity: 38. Times: 30, 30, 30, 30.**

Chokes **3/4** Hole Size **7 7/8**  
 Top Recorder # **W1119**  
 Mid Recorder # **W1022**  
 Bott Recorder # **13310**  
 Mileage **32** Approved By  
 Standby Time **0**  
 Extra Equipmnt **Jars & Safety joint**  
 Time on Site **12:15 AM**  
 Tool Picked Up **1:25 AM**  
 Tool Layed Dwn **7:00 AM**  
 Elevation **2386.00** Kelley Bushings **2391.00**

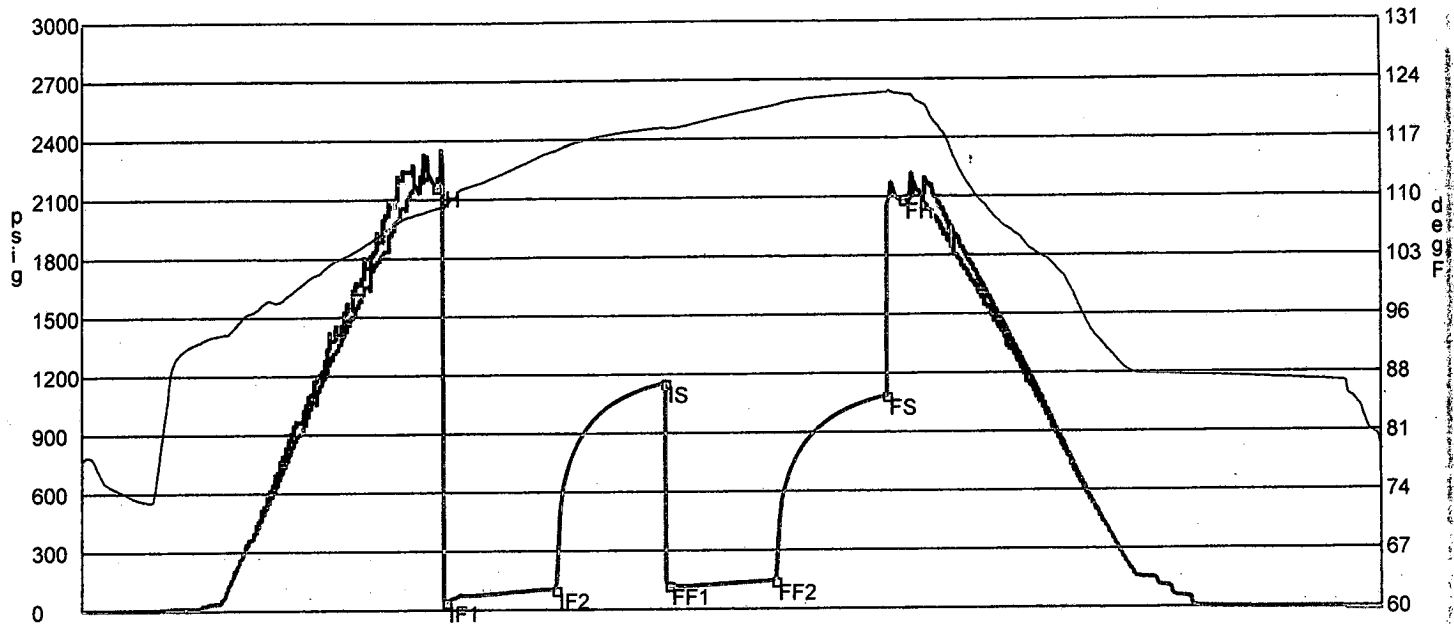
Start Date/Time **6/14/2011 1:09 PM**  
 End Date/Time **6/14/2011 7:01 PM**

**RECOVERY**

Feet	Description	Gas	Oil	Water	Mud
155	Gas in Pipe	100% 155ft	0% 0ft	0% 0ft	0% 0ft
185	Gassy oil	2% 3.7ft	98% 181.3ft	0% 0ft	0% 0ft
35	Gassy, slight mud cut oil	2% 0.7ft	95% 33.2ft	0% 0ft	3% 1ft
125	Gassy, slight water, mud cut oil	11% 13.8ft	51% 63.8ft	11% 13.8ft	27% 33.8ft

DST Fluids **10000**

**RECEIVED**  
**SEP 12 2011**  
**KCC WICHITA**



	Date	Time	Pressure	Temp	
IH	6/14/2011 2:44:10 PM	1.586111	2164.048	108.538	Initial Hydro-static
IF1	6/14/2011 2:46:30 PM	1.625	40.56	108.782	Initial Flow (1)
IF2	6/14/2011 3:16:30 PM	2.125	103.154	115.425	Initial Flow (2)
IS	6/14/2011 3:46:20 PM	2.622222	1155.094	118.173	Initial Shut-In
FF1	6/14/2011 3:47:20 PM	2.638889	121.631	118.067	Final Flow (1)
FF2	6/14/2011 4:16:20 PM	3.122222	143.989	120.764	Final Flow (2)
FS	6/14/2011 4:46:30 PM	3.625	1085.035	122.274	Final Shut-In
FH	6/14/2011 4:51:00 PM	3.7	2085.358	122.078	Final Hydro-static

**GAS FLOWS**

Min Into IFP    Min Into FFP    Gas Flows    Pressure    Choke

RECEIVED  
 SEP 12 2011  
 KCC WICHITA