

TRILOBITE TESTING, L.L.C.

P.O. Box 362 • Hays, Kansas 67601

Drill-Stem Test Data

Well Name #1 MAULER Test No. 1 Date 9/26/92
Company RITCHIE EXPLORATION, INC. Zone LKC
Address 125 N MARKET SUITE 1000 WICHITA KS 67202 Elevation 2756
Co. Rep./Geo. KEVIN KESSLER Cont. WHITE & ELLIS RIG #9 Est. Ft. of Pay _____
Location: Sec. 4 Twp. 19S Rge. 28W Co. LANE State KS

Interval Tested 4200-4235 Drill Pipe Size 4.5" XH
Anchor Length 35 Wt. Pipe I.D. - 2.7 Ft. Run _____
Top Packer Depth 4195 Drill Collar - 2.25 Ft. Run _____
Bottom Packer Depth 4200 Mud Wt. 9 lb/Gal.
Total Depth 4235 Viscosity 45 Filtrate 8.8

Tool Open @ 12:05 Initial Blow PACKER FAILURE

Final Blow _____

Recovery - Total Feet 120 Flush Tool? NO

Rec. 120 Feet of VERY SLTLY OIL STAINED MUD
Rec. _____ Feet of _____
Rec. _____ Feet of _____
Rec. _____ Feet of _____
Rec. _____ Feet of _____

BHT 113 °F Gravity _____ °API @ _____ °F Corrected Gravity _____ °API
RW _____ @ _____ °F Chlorides _____ ppm Recovery Chlorides 3000 ppm System

(A) Initial Hydrostatic Mud 2070.4 PSI AK1 Recorder No. 11057 Range 4500

(B) First Initial Flow Pressure 112.3 PSI @ (depth) 4202 w / Clock No. 7452

(C) First Final Flow Pressure _____ PSI AK1 Recorder No. 13308 Range 4700

(D) Initial Shut-in Pressure _____ PSI @ (depth) 4230 w / Clock No. 19960

(E) Second Initial Flow Pressure _____ PSI AK1 Recorder No. _____ Range _____

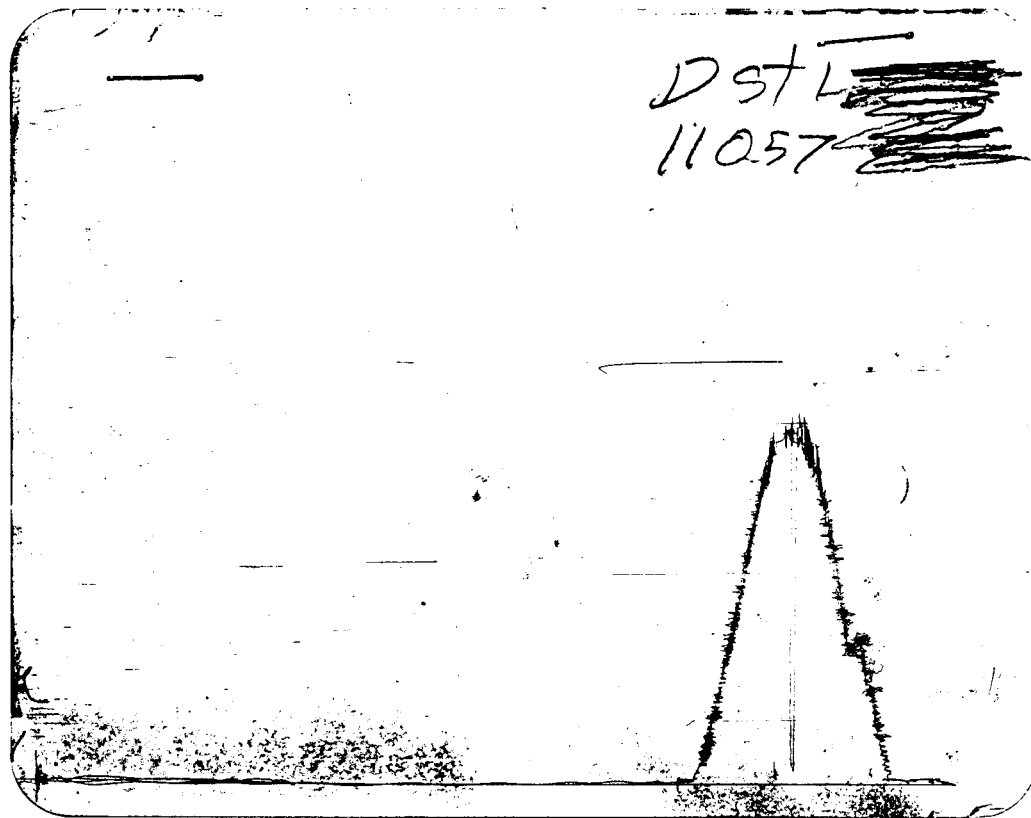
(F) Second Final Flow Pressure _____ PSI @ (depth) _____ w / Clock No. _____

(G) Final Shut-in Pressure _____ PSI Initial Opening _____ Final Flow _____

(H) Final Hydrostatic Mud 2033.7 PSI Initial Shut-in _____ Final Shut-in _____

Our Representative MARK HERSKOWITZ

CHART PAGE



This is an actual photograph of recorder chart

	FIELD READING	OFFICE READING
(A) INITIAL HYDROSTATIC MUD	2068	2070.4
(B) FIRST INITIAL FLOW PRESSURE	97	112.3
(C) FIRST FINAL FLOW PRESSURE		
(D) INITIAL CLOSED-IN PRESSURE		
(E) SECOND INITIAL FLOW PRESSURE		
(F) SECOND FINAL FLOW PRESSURE		
(G) FINAL CLOSED-IN PRESSURE		
(H) FINAL HYDROSTATIC MUD	2030	2033.7

TRILOBITE TESTING L.L.C.

P.O. Box 362 • Hays, Kansas 67601

Test Ticket

N^o 5229

#1 Master

Well Name & No. MAVER 1 # Test No. 1 Date 9-26-92
 Company RITCHIE EXP INC Zone Tested L-KC
 Address 125 N. MARKET ST #1000 WICHITA Elevation 2756 KB
 Co. Rep./Geo. HEVIN MESSLER Cont. W&E RID 9 Est. Ft. of Pay _____
 Location: Sec. 4 Twp. 19S Rge. 28W Co. LANE State KS
 No. of Copies _____ Distribution Sheet _____ Yes _____ No _____ Turnkey _____ Yes _____ No _____ Evaluation _____

Interval Tested 4200 - 4235 Drill Pipe Size 4 1/2 X H
 Anchor Length 35 Top Choke — 1" _____ Bottom Choke — 3/4" _____
 Top Packer Depth 4195 Hole Size — 7 7/8" _____ Rubber Size — 6 3/4" _____
 Bottom Packer Depth 4200 Wt. Pipe I.D. — 2.7 Ft. Run _____
 Total Depth 4235 Drill Collar — 2.25 Ft. Run _____
 Mud Wt. 9.0 LCM — lb/gal. Viscosity 45 Filtrate 8.8
 Tool Open @ 12:05 Initial Blow PACKER FAILURE
 Final Blow _____

Recovery — Total Feet	Feet of Gas in Pipe	Flush Tool?
Rec. <u>120</u> Feet Of <u>VSOS MUD</u>	<u>TR</u> %gas <u>TR</u> %oil _____ %water _____ %mud _____	
Rec. _____ Feet Of _____	%gas _____ %oil _____ %water _____ %mud _____	
Rec. _____ Feet Of _____	%gas _____ %oil _____ %water _____ %mud _____	
Rec. _____ Feet Of _____	%gas _____ %oil _____ %water _____ %mud _____	
Rec. _____ Feet Of _____	%gas _____ %oil _____ %water _____ %mud _____	

BHT 113 °F Gravity _____ °API @ _____ °F Corrected Gravity _____ °API
 RW _____ @ _____ °F Chlorides _____ ppm Recovery Chlorides 3,000 ppm System
 (A) Initial Hydrostatic Mud 2068 PSI AK1 Recorder No. 11057 Range 4500
 (B) First Initial Flow Pressure 97 PSI @ (depth) 4202 w/Clock No. 7452
 (C) First Final Flow Pressure _____ PSI AK1 Recorder No. 13308 Range 4200
 (D) Initial Shut-In Pressure _____ PSI @ (depth) 4230 w/Clock No. 19960
 (E) Second Initial Flow Pressure _____ PSI AK1 Recorder No. _____ Range _____
 (F) Second Final Flow Pressure _____ PSI @ (depth) _____ w/Clock No. _____
 (G) Final Shut-In Pressure _____ PSI Initial Opening _____ Test MR. 400.00
 (H) Final Hydrostatic Mud 2030 PSI Initial Shut-In _____ Jars _____

TRILOBITE TESTING L.L.C. SHALL NOT BE LIABLE FOR DAMAGE OF ANY KIND OF THE PROPERTY OR PERSONNEL OF THE ONE FOR WHOM A TEST IS MADE, OR FOR ANY LOSS SUFFERED OR SUSTAINED, DIRECTLY OR INDIRECTLY, THROUGH THE USE OF ITS EQUIPMENT, OR ITS STATEMENTS OR OPINION CONCERNING THE RESULTS OF ANY TEST. TOOLS LOST OR DAMAGED IN THE HOLE SHALL BE PAID FOR AT COST BY THE PARTY FOR WHOM THE TEST IS MADE.

Final Flow _____ Safety Joint _____
 Final Shut-in _____ Straddle _____
 Circ. Sub ATC
 Sampler _____

Approved By _____
 Our Representative _____
 Extra Packer _____
 Other _____
 TOTAL PRICE \$ _____

TRILOBITE TESTING, L.L.C.

P.O. Box 362 • Hays, Kansas 67601

Drill-Stem Test Data

Well Name #1 MAULER Test No. 2 Date 9/27/92
Company RITCHIE EXPLORATION, INC. Zone LKC
Address 125 N MARKET SUITE 1000 WICHITA KS 67202 Elevation 2756
Co. Rep./Geo. KEVIN KESSLER Cont. WHITE & ELLIS RIG #9 Est. Ft. of Pay _____
Location: Sec. 4 Twp. 19S Rge. 28W Co. LANE State KS

Interval Tested 4192-4235 Drill Pipe Size 4.5" XH
Anchor Length 43 Wt. Pipe I.D. - 2.7 Ft. Run _____
Top Packer Depth 4187 Drill Collar - 2.25 Ft. Run _____
Bottom Packer Depth 4192 Mud Wt. 9 lb/Gal.
Total Depth 4235 Viscosity 45 Filtrate 8.8

Tool Open @ 3:03 Initial Blow PACKER FAILURE

Final Blow _____

Recovery - Total Feet 100 Flush Tool? NO

Rec. 100 Feet of MUD
Rec. _____ Feet of _____
Rec. _____ Feet of _____
Rec. _____ Feet of _____
Rec. _____ Feet of _____

BHT _____ °F Gravity _____ °API @ _____ °F Corrected Gravity _____ °API
RW _____ @ _____ °F Chlorides _____ ppm Recovery Chlorides 3000 ppm System

(A) Initial Hydrostatic Mud 2070.4 PSI AK1 Recorder No. 11057 Range 4500

(B) First Initial Flow Pressure 122.5 PSI @ (depth) 4195 w / Clock No. 7452

(C) First Final Flow Pressure _____ PSI AK1 Recorder No. 13308 Range 4700

(D) Initial Shut-in Pressure _____ PSI @ (depth) 4230 w / Clock No. 19960

(E) Second Initial Flow Pressure _____ PSI AK1 Recorder No. _____ Range _____

(F) Second Final Flow Pressure _____ PSI @ (depth) _____ w / Clock No. _____

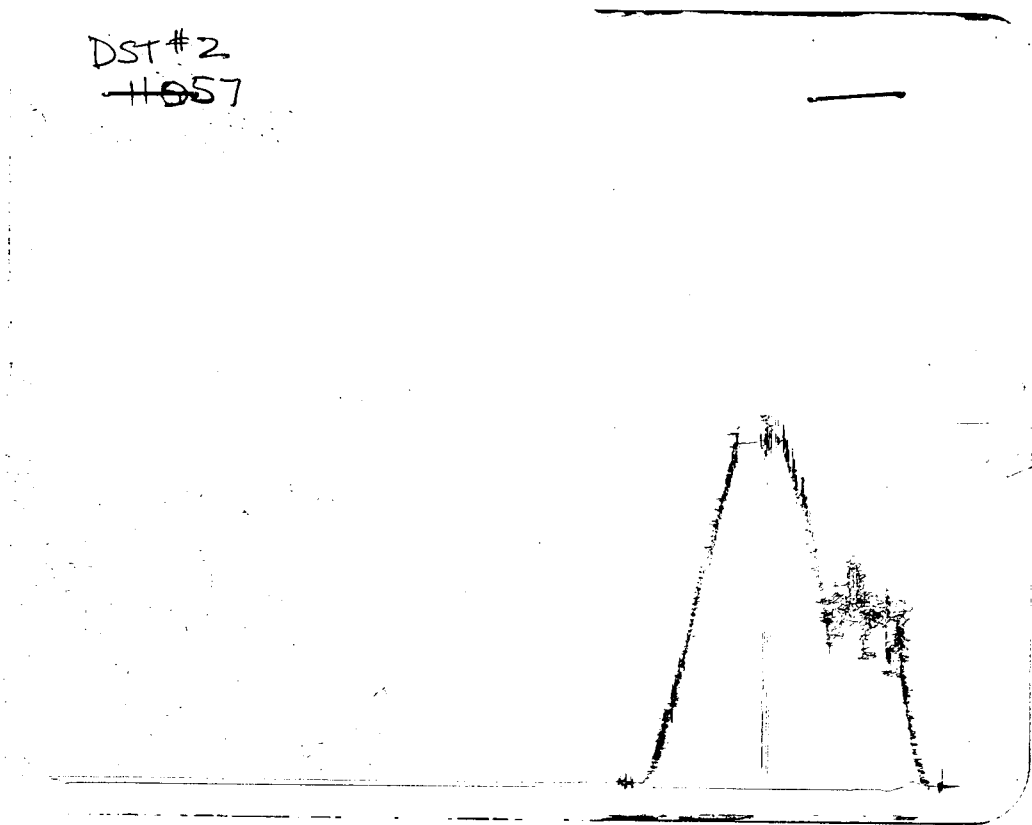
(G) Final Shut-in Pressure _____ PSI Initial Opening _____ Final Flow _____

(H) Final Hydrostatic Mud 2033.7 PSI Initial Shut-in _____ Final Shut-in _____

Our Representative MARK HERSKOWITZ

CHART PAGE

DST #2
~~1057~~



This is an actual photograph of recorder chart

	FIELD READING	OFFICE READING
(A) INITIAL HYDROSTATIC MUD	2068	2070.4
(B) FIRST INITIAL FLOW PRESSURE	121	122.5
(C) FIRST FINAL FLOW PRESSURE		
(D) INITIAL CLOSED-IN PRESSURE		
(E) SECOND INITIAL FLOW PRESSURE		
(F) SECOND FINAL FLOW PRESSURE		
(G) FINAL CLOSED-IN PRESSURE		
(H) FINAL HYDROSTATIC MUD	2030	2033.7

TRILOBITE TESTING L.L.C.

P.O. Box 362 • Hays, Kansas 67601

Test Ticket

№ 5230

Well Name & No. <u>NAVIER 1H</u>	Test No. <u>2</u>	Date <u>9-27-92</u>
Company <u>RITCHIE EXP INC</u>	Zone Tested <u>L-KC</u>	
Address <u>125 N MARKET ST #1000 WICHITA</u>	Elevation <u>2756 KB</u>	
Co. Rep./Geo. <u>KEVIN KESLER</u>	Cont. <u>W&F Rig 9</u>	Est. Ft. of Pay _____
Location: Sec. <u>4</u>	Twp. <u>19s</u>	Rge. <u>28W</u> Co. <u>LANE</u> State <u>KS</u>
No. of Copies _____	Distribution Sheet _____	Yes _____ No _____ Turnkey _____ Yes _____ No _____ Evaluation _____

Interval Tested <u>4192-4235</u>	Drill Pipe Size <u>4 1/2 XH</u>
Anchor Length <u>43</u>	Top Choke — 1" _____ Bottom Choke — 3/4" _____
Top Packer Depth <u>4187</u>	Hole Size — 7 7/8" _____ Rubber Size — 6 3/4" _____
Bottom Packer Depth <u>4192</u>	Wt. Pipe I.D. — 2.7 Ft. Run _____
Total Depth <u>4235</u>	Drill Collar — 2.25 Ft. Run _____
Mud Wt. <u>9.0 - LCM</u> lb/gal.	Viscosity <u>45</u> Filtrate <u>8.8</u>
Tool Open @ <u>3:03</u>	Initial Blow <u>PACKER FAILURE</u>
Final Blow _____	

Recovery — Total Feet	Feet of Gas in Pipe	Flush Tool?
Rec. <u>100</u> Feet Of	<u>Mud</u>	% gas _____ % oil _____ % water <u>100</u> % mud _____
Rec. _____ Feet Of		% gas _____ % oil _____ % water _____ % mud _____
Rec. _____ Feet Of		% gas _____ % oil _____ % water _____ % mud _____
Rec. _____ Feet Of		% gas _____ % oil _____ % water _____ % mud _____
Rec. _____ Feet Of		% gas _____ % oil _____ % water _____ % mud _____

BHT _____ °F	Gravity _____ °API @ _____ °F	Corrected Gravity _____ °API
RW _____ @ _____ °F	Chlorides _____ ppm	Recovery Chlorides <u>3000</u> ppm System
(A) Initial Hydrostatic Mud <u>2068</u>	PSI	AK1 Recorder No. <u>11057</u> Range <u>4500</u>
(B) First Initial Flow Pressure <u>121</u>	PSI	@ (depth) <u>4195</u> w/Clock No. <u>7452</u>
(C) First Final Flow Pressure _____	PSI	AK1 Recorder No. <u>13308</u> Range <u>4700</u>
(D) Initial Shut-In Pressure _____	PSI	@ (depth) <u>4230</u> w/Clock No. <u>19960</u>
(E) Second Initial Flow Pressure _____	PSI	AK1 Recorder No. _____ Range _____
(F) Second Final Flow Pressure _____	PSI	@ (depth) _____ w/Clock No. _____
(G) Final Shut-In Pressure _____	PSI	Initial Opening _____ Test <input checked="" type="checkbox"/>
(H) Final Hydrostatic Mud <u>2053</u>	PSI	Initial Shut-In _____ Jars _____

TRILOBITE TESTING L.L.C. SHALL NOT BE LIABLE FOR DAMAGE OF ANY KIND OF THE PROPERTY OR PERSONNEL OF THE ONE FOR WHOM A TEST IS MADE, OR FOR ANY LOSS SUFFERED OR SUSTAINED, DIRECTLY OR INDIRECTLY, THROUGH THE USE OF ITS EQUIPMENT, OR ITS STATEMENTS OR OPINION CONCERNING THE RESULTS OF ANY TEST. TOOLS LOST OR DAMAGED IN THE HOLE SHALL BE PAID FOR AT COST BY THE PARTY FOR WHOM THE TEST IS MADE.

Final Flow _____	Safety Joint _____
Final Shut-In _____	Straddle _____
	Circ. Sub <input checked="" type="checkbox"/> <u>NC</u>
	Sampler _____

Approved By _____	Extra Packer _____
Our Representative _____	Other _____
Printcraft Printers - Hays, KS	TOTAL PRICE \$ _____

TRILOBITE TESTING, L.L.C.

P.O. Box 362 • Hays, Kansas 67601

Drill-Stem Test Data

Well Name #1 MAULER Test No. 3 Date 9/27/92
Company RITCHIE EXPLORATION, INC. Zone LKC
Address 125 N MARKET SUITE 1000 WICHITA KS 67202 Elevation 2756
Co. Rep./Geo. KEVIN KESSLER Cont. WHITE & ELLIS RIG #9 Est. Ft. of Pay _____
Location: Sec. 4 Twp. 19S Rge. 28W Co. LANE State KS

Interval Tested 4223-4235 Drill Pipe Size 4.5" XH
Anchor Length 12 Wt. Pipe I.D. - 2.7 Ft. Run _____
Top Packer Depth 4223 Drill Collar - 2.25 Ft. Run _____
Bottom Packer Depth _____ Mud Wt. 8.9 lb/Gal.
Total Depth 4235 Viscosity 45 Filtrate 9

Tool Open @ 10:37 Initial Blow LOST 60' MUD ON OPEN-2" BLOW TO 2.5" BLOW IN 45
MINUTES

Final Blow WEAK SURFACE BLOW TO 2" IN 45 MINUTES

Recovery - Total Feet 120 Flush Tool? NO

Rec. 60 Feet of MUD
Rec. 60 Feet of WATERY MUD-25%WTR/75%MUD
Rec. _____ Feet of _____
Rec. _____ Feet of _____
Rec. _____ Feet of _____

BHT 114 °F Gravity _____ °API @ _____ °F Corrected Gravity _____ °API
RW 0.2 @ 84 °F Chlorides 25000 ppm Recovery Chlorides 3000 ppm System

(A) Initial Hydrostatic Mud 2110.7 PSI AK1 Recorder No. 11057 Range 4500

(B) First Initial Flow Pressure 112.3 PSI @ (depth) 4230 w / Clock No. 7452

(C) First Final Flow Pressure 62.5 PSI AK1 Recorder No. 13308 Range 4700

(D) Initial Shut-in Pressure 658.7 PSI @ (depth) 4226 w / Clock No. 19960

(E) Second Initial Flow Pressure 74.3 PSI AK1 Recorder No. _____ Range _____

(F) Second Final Flow Pressure 74.3 PSI @ (depth) _____ w / Clock No. _____

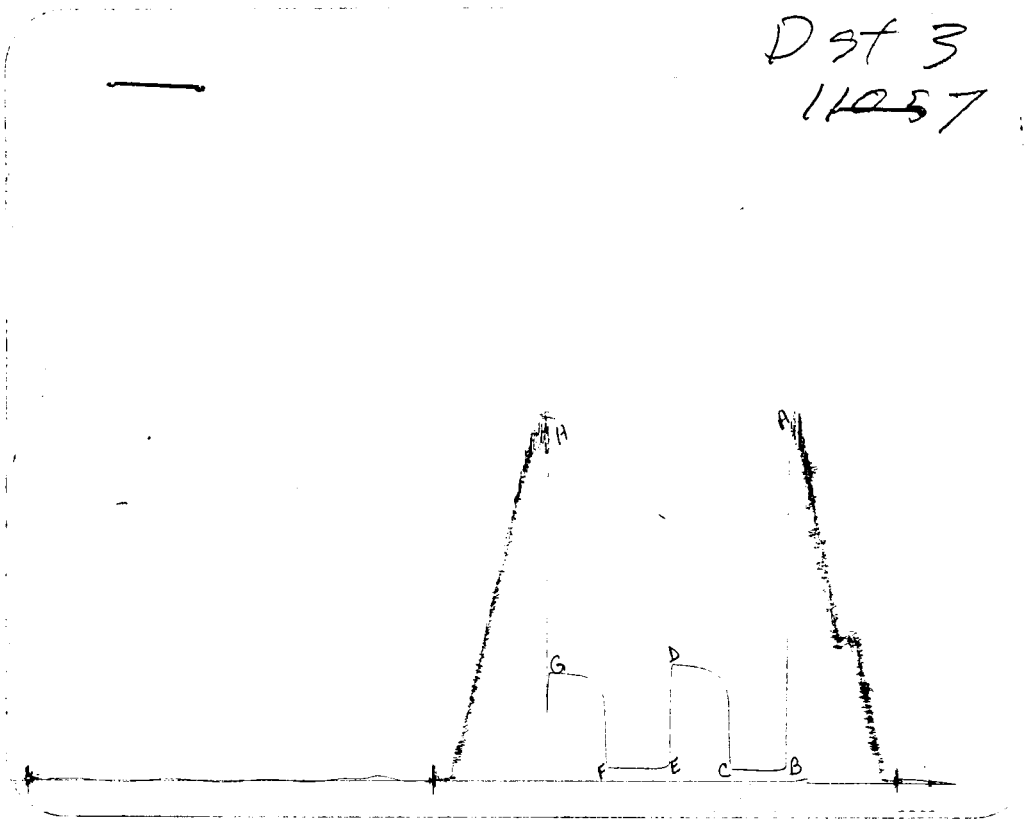
(G) Final Shut-in Pressure 620.5 PSI Initial Opening 45 Final Flow 45

(H) Final Hydrostatic Mud 2047.8 PSI Initial Shut-in 45 Final Shut-in 45

Our Representative MARK HERSKOWITZ

CHART PAGE

DST 3
11257



This is an actual photograph of recorder chart

	FIELD READING	OFFICE READING
(A) INITIAL HYDROSTATIC MUD	2104	2110.7
(B) FIRST INITIAL FLOW PRESSURE	97	112.3
(C) FIRST FINAL FLOW PRESSURE	60	62.5
(D) INITIAL CLOSED-IN PRESSURE	654	658.7
(E) SECOND INITIAL FLOW PRESSURE	72	74.3
(F) SECOND FINAL FLOW PRESSURE	72	74.3
(G) FINAL CLOSED-IN PRESSURE	619	620.5
(H) FINAL HYDROSTATIC MUD	2045	2047.8

Test Ticket

№ 5231

Well Name & No. MAULER 1# Test No. 3 Date 9-27-92
 Company RITCHIE EXP INC Zone Tested L-KC
 Address 125 N MARKET STE 1000 WICHITA Elevation 2756 AB
 Co. Rep./Geo. DEVIN KESSLER cont. W/L Rig 9 Est. Ft. of Pay _____
 Location: Sec. 4 Twp. 19s Rge. 28w Co. LANE State KS
 No. of Copies _____ Distribution Sheet _____ Yes _____ No _____ Turnkey _____ Yes _____ No _____ Evaluation _____

Interval Tested 4223 - 4235 Drill Pipe Size 4 1/2 XH
 Anchor Length 12 Top Choke - 1" _____ Bottom Choke - 3/4" _____
 Top Packer Depth 4223 Hole Size - 7 7/8" _____ Rubber Size - 6 3/4" _____
 Bottom Packer Depth _____ Wt. Pipe I.D. - 2.7 Ft. Run _____
 Total Depth 4235 Drill Collar - 2.25 Ft. Run _____
 Mud Wt. 8.9 LCM lb/gal. Viscosity 45 Filtrate 9.0
 Tool Open @ 10:37 Initial Blow LOSS CO MUD ON OPEN 2" BLOW TO 2 1/2" IN 45 MIN
 Final Blow WEAK SUR TO 2" IN 45 MIN

Recovery - Total Feet	Feet of Gas in Pipe	Flush Tool?
Rec. 60 <u>60</u> Feet Of <u>MUD</u>	% gas _____ % oil _____ % water <u>100</u> % mud _____	
Rec. <u>60</u> Feet Of <u>WATER MUD</u>	% gas _____ % oil <u>25</u> % water <u>70</u> % mud _____	
Rec. _____ Feet Of _____	% gas _____ % oil _____ % water _____ % mud _____	
Rec. _____ Feet Of _____	% gas _____ % oil _____ % water _____ % mud _____	
Rec. _____ Feet Of _____	% gas _____ % oil _____ % water _____ % mud _____	

BHT 114 °F Gravity _____ °API @ _____ °F Corrected Gravity _____ °API
 RW 0.20 @ 84 °F Chlorides 25000 ppm Recovery Chlorides 3000 ppm System
 (A) Initial Hydrostatic Mud 2104 PSI AK1 Recorder No. 11057 Range 4500
 (B) First Initial Flow Pressure 97 PSI @ (depth) 4230 w/Clock No. 7452
 (C) First Final Flow Pressure 60 PSI AK1 Recorder No. 13308 Range 4700
 (D) Initial Shut-In Pressure 654 PSI @ (depth) 4224 w/Clock No. 19960
 (E) Second Initial Flow Pressure 72 PSI AK1 Recorder No. _____ Range _____
 (F) Second Final Flow Pressure 72 PSI @ (depth) _____ w/Clock No. _____
 (G) Final Shut-In Pressure 619 PSI Initial Opening 45 Test
 (H) Final Hydrostatic Mud 2045 PSI Initial Shut-In 45 Jars _____

TRILOBITE TESTING L.L.C. SHALL NOT BE LIABLE FOR DAMAGE OF ANY KIND OF THE PROPERTY OR PERSONNEL OF THE ONE FOR WHOM A TEST IS MADE, OR FOR ANY LOSS SUFFERED OR SUSTAINED, DIRECTLY OR INDIRECTLY, THROUGH THE USE OF ITS EQUIPMENT, OR ITS STATEMENTS OR OPINION CONCERNING THE RESULTS OF ANY TEST. TOOLS LOST OR DAMAGED IN THE HOLE SHALL BE PAID FOR AT COST BY THE PARTY FOR WHOM THE TEST IS MADE.

Final Flow 45 Safety Joint _____
 Final Shut-In 45 Straddle _____
 Run ONE PACKER
 Circ. Sub NC
 Sampler _____
 Extra Packer _____
 Other _____

Approved By Devin Kessler
 Our Representative Mark Hershey

TOTAL PRICE \$ _____

TRILOBITE TESTING, L.L.C.

P.O. Box 362 • Hays, Kansas 67601

Drill-Stem Test Data

Well Name #1 MAULER Test No. 4 Date 9/27/92
Company RITCHIE EXPLORATION, INC. Zone LKC
Address 125 N MARKET SUITE 1000 WICHITA KS 67202 Elevation 2756
Co. Rep./Geo. KEVIN KESSLER Cont. WHITE & ELLIS RIG #9 Est. Ft. of Pay 4
Location: Sec. 4 Twp. 19S Rge. 28W Co. LANE State KS

Interval Tested 4246-4252 Drill Pipe Size 4.5" XH
Anchor Length 6 Wt. Pipe I.D. - 2.7 Ft. Run _____
Top Packer Depth 4241 Drill Collar - 2.25 Ft. Run _____
Bottom Packer Depth 4246 Mud Wt. 9 lb/Gal.
Total Depth 4252 Viscosity 48 Filtrate 9

Tool Open @ 10:09 Initial Blow LOST 80' MUD - 4" BLOW TO 7" BLOW IN 45 MINUTES

Final Blow SURFACE TO 3" IN 45 MINUTES

Recovery - Total Feet 145 Flush Tool? NO

Rec. 95 Feet of GAS IN PIPE
Rec. 10 Feet of CLEAN OIL
Rec. 135 Feet of OIL CUT MUD-5%OIL/95%MUD
Rec. _____ Feet of _____
Rec. _____ Feet of _____

BHT 114 °F Gravity _____ °API @ _____ °F Corrected Gravity _____ °API
RW _____ @ _____ °F Chlorides _____ ppm Recovery Chlorides 3000 ppm System

(A) Initial Hydrostatic Mud 2099.6 PSI AK1 Recorder No. 11057 Range 4500

(B) First Initial Flow Pressure 88.9 PSI @ (depth) 4230 w / Clock No. 7452

(C) First Final Flow Pressure 112.3 PSI AK1 Recorder No. 13308 Range 4700

(D) Initial Shut-in Pressure 777.4 PSI @ (depth) 4248 w / Clock No. 19960

(E) Second Initial Flow Pressure 112.3 PSI AK1 Recorder No. _____ Range _____

(F) Second Final Flow Pressure 111.2 PSI @ (depth) _____ w / Clock No. _____

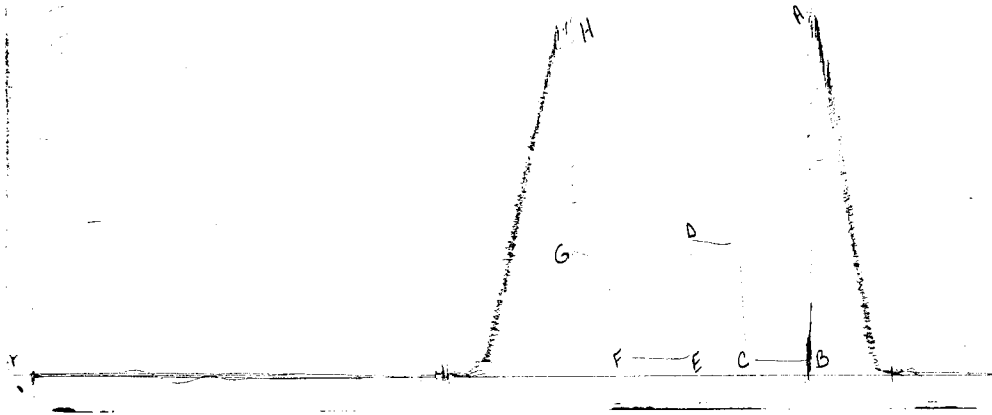
(G) Final Shut-in Pressure 715.4 PSI Initial Opening 45 Final Flow 45

(H) Final Hydrostatic Mud 5050.9 PSI Initial Shut-in 45 Final Shut-in 45

Our Representative MARK HERSKOWITZ

CHART PAGE

DST 4
11037



This is an actual photograph of recorder chart

	FIELD READING	OFFICE READING
(A) INITIAL HYDROSTATIC MUD	2092	2099.6
(B) FIRST INITIAL FLOW PRESSURE	85	88.9
(C) FIRST FINAL FLOW PRESSURE	97	112.3
(D) INITIAL CLOSED-IN PRESSURE	771	777.4
(E) SECOND INITIAL FLOW PRESSURE	97	112.3
(F) SECOND FINAL FLOW PRESSURE	109	111.2
(G) FINAL CLOSED-IN PRESSURE	713	715.4
(H) FINAL HYDROSTATIC MUD	2057	5050.9

TRILOBITE TESTING L.L.C.

P.O. Box 362 • Hays, Kansas 67601

Test Ticket

N^o 5232

Well Name & No. <u>MAUTER 1#</u>	Test No. <u>4</u>	Date <u>9-27-92</u>
Company <u>RITCHIE EXP INC</u>	Zone Tested <u>L-KS</u>	
Address <u>125 N MARKET ST #1000 WICHITA</u>	Elevation <u>2756 PFB</u>	
Co. Rep./Geo. <u>KEVIN KESSTER</u> cont. <u>W&E Rig 9</u>	Est. Ft. of Pay <u>4</u>	
Location: Sec. <u>4</u> Twp. <u>19S</u> Rge. <u>29W</u> Co. <u>LANE</u> State <u>KS</u>		
No. of Copies _____	Distribution Sheet _____	Yes _____ No _____ Turnkey _____ Yes _____ No _____ Evaluation _____

Interval Tested <u>4246 - 4252</u>	Drill Pipe Size <u>4 1/2 X FT</u>
Anchor Length <u>6</u>	Top Choke — 1" _____ Bottom Choke — 3/4" _____
Top Packer Depth <u>4241</u>	Hole Size — 7 7/8" _____ Rubber Size — 6 3/4" _____
Bottom Packer Depth <u>4246</u>	Wt. Pipe I.D. — 2.7 Ft. Run _____
Total Depth <u>4252</u>	Drill Collar — 2.25 Ft. Run _____
Mud Wt. <u>9.0 LCM</u> _____ lb/gal.	Viscosity <u>48</u> Filtrate <u>9.0</u>
Tool Open @ <u>10:09</u> Initial Blow <u>Loss 80' MUD</u>	<u>4" Blow to 7" IN</u>
<u>45 MIN</u>	
Final Blow <u>SUB TO 3" IN 45 MIN</u>	

Recovery — Total Feet <u>145</u>	Feet of Gas in Pipe <u>95</u>	Flush Tool? _____
Rec. <u>10</u> Feet Of _____	<u>C OIL</u>	%gas <u>100</u> %oil _____ %water _____ %mud _____
Rec. <u>135</u> Feet Of _____	<u>OIL MUD</u>	%gas <u>5</u> %oil _____ %water <u>95</u> %mud _____
Rec. _____ Feet Of _____		%gas _____ %oil _____ %water _____ %mud _____
Rec. _____ Feet Of _____		%gas _____ %oil _____ %water _____ %mud _____
Rec. _____ Feet Of _____		%gas _____ %oil _____ %water _____ %mud _____

BHT <u>114</u> °F Gravity _____	°API @ _____	°F Corrected Gravity _____	°API _____
RW _____ @ _____ °F	Chlorides _____ ppm Recovery	Chlorides <u>3000</u> ppm System	
(A) Initial Hydrostatic Mud <u>2092</u> PSI	AK1 Recorder No. <u>11057</u>	Range <u>4500</u>	
(B) First Initial Flow Pressure <u>85</u> PSI	@ (depth) <u>4230</u>	w/Clock No. <u>7452</u>	
(C) First Final Flow Pressure <u>97</u> PSI	AK1 Recorder No. <u>13308</u>	Range <u>4700</u>	
(D) Initial Shut-in Pressure <u>771</u> PSI	@ (depth) <u>4248</u>	w/Clock No. <u>19980</u>	
(E) Second Initial Flow Pressure <u>97</u> PSI	AK1 Recorder No. _____	Range _____	
(F) Second Final Flow Pressure <u>109</u> PSI	@ (depth) _____	w/Clock No. _____	
(G) Final Shut-in Pressure <u>713</u> PSI	Initial Opening <u>45</u>	Test <input checked="" type="checkbox"/>	
(H) Final Hydrostatic Mud <u>2057</u> PSI	Initial Shut-in <u>45</u>	Jars _____	

TRILOBITE TESTING L.L.C. SHALL NOT BE LIABLE FOR DAMAGE OF ANY KIND OF THE PROPERTY OR PERSONNEL OF THE ONE FOR WHOM A TEST IS MADE, OR FOR ANY LOSS SUFFERED OR SUSTAINED, DIRECTLY OR INDIRECTLY, THROUGH THE USE OF ITS EQUIPMENT, OR ITS STATEMENTS OR OPINION CONCERNING THE RESULTS OF ANY TEST. TOOLS LOST OR DAMAGED IN THE HOLE SHALL BE PAID FOR AT COST BY THE PARTY FOR WHOM THE TEST IS MADE.

Final Flow <u>45</u>	Safety Joint _____
Final Shut-in <u>45</u>	Straddle _____
	Circ. Sub <input checked="" type="checkbox"/> <u>NO</u>
	Sampler _____
	Extra Packer _____
	Other _____

Approved By [Signature]
 Our Representative [Signature]

TOTAL PRICE \$ _____

TRILOBITE TESTING, L.L.C.

P.O. Box 362 • Hays, Kansas 67601

Drill-Stem Test Data

Well Name #1 MAULER Test No. 5 Date 9/28/92
Company RITCHIE EXPLORATION, INC. Zone LKC
Address 125 N MARKET SUITE 1000 WICHITA KS 67202 Elevation 2756
Co. Rep./Geo. KEVIN KESSLER Cont. WHITE & ELLIS RIG #9 Est. Ft. of Pay _____
Location: Sec. 4 Twp. 19S Rge. 28W Co. LANE State KS

Interval Tested 4259-4280 Drill Pipe Size 4.5" XH
Anchor Length 21 Wt. Pipe I.D. - 2.7 Ft. Run _____
Top Packer Depth 4259 Drill Collar - 2.25 Ft. Run _____
Bottom Packer Depth _____ Mud Wt. 9.2 lb/Gal.
Total Depth 4280 Viscosity 49 Filtrate 8.8

Tool Open @ 12:15 Initial Blow OPEN 1" BLOW TO 28 MINUTES OFF BOTTOM

Final Blow SURFACE TO BOTTOM IN 32 MINUTES

Recovery - Total Feet 270 Flush Tool? NO

Rec. 30 Feet of GAS IN PIPE
Rec. 30 Feet of CLEAN OIL
Rec. 240 Feet of SLTLY OIL CUT MUDDY WATER-1/2%OIL/74.5% WTR/25%MUD
Rec. _____ Feet of _____
Rec. _____ Feet of _____

BHT 114 °F Gravity 38 °API @ 80 °F Corrected Gravity 36 °API
RW 0.12 @ 77 °F Chlorides 48000 ppm Recovery Chlorides 4000 ppm System

(A) Initial Hydrostatic Mud 2130.6 PSI AK1 Recorder No. 11057 Range 4500

(B) First Initial Flow Pressure 44.6 PSI @ (depth) 4261 w / Clock No. 7452

(C) First Final Flow Pressure 74.3 PSI AK1 Recorder No. 13308 Range 4700

(D) Initial Shut-in Pressure 891.2 PSI @ (depth) 4275 w / Clock No. 19960

(E) Second Initial Flow Pressure 111.2 PSI AK1 Recorder No. _____ Range _____

(F) Second Final Flow Pressure 141.6 PSI @ (depth) _____ w / Clock No. _____

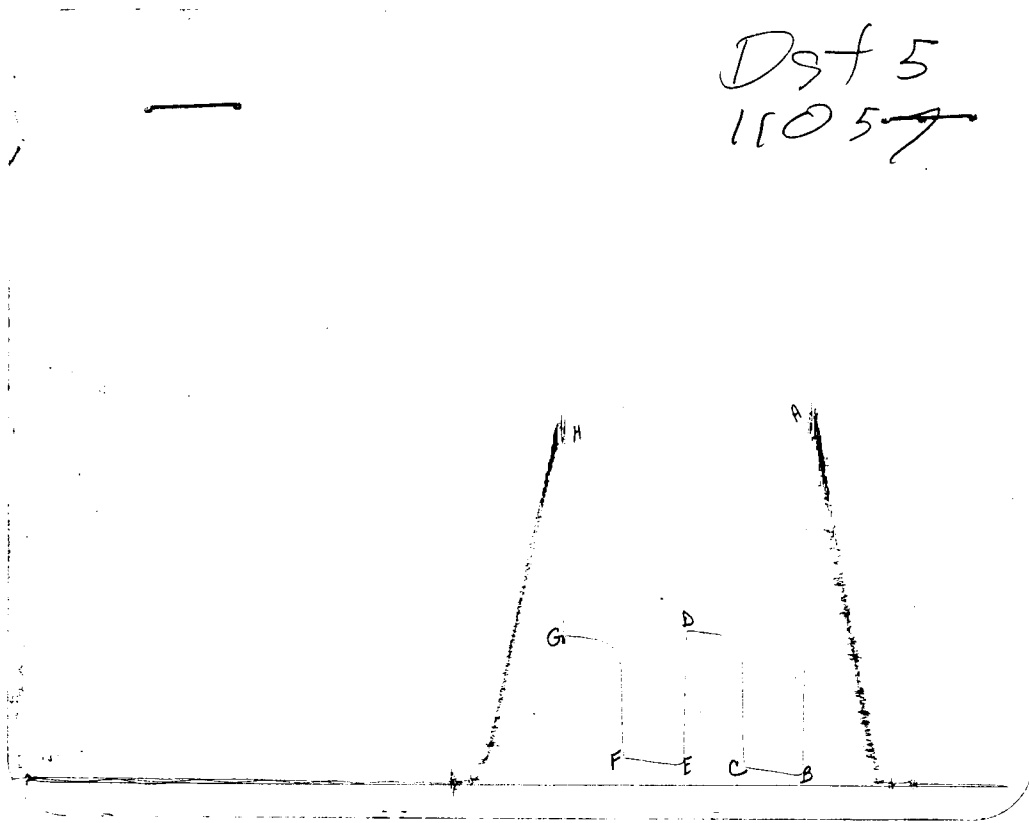
(G) Final Shut-in Pressure 850.7 PSI Initial Opening 45 Final Flow 45

(H) Final Hydrostatic Mud 2079.4 PSI Initial Shut-in 45 Final Shut-in 45

Our Representative MARK HERSKOWITZ

CHART PAGE

Dst 5
11057

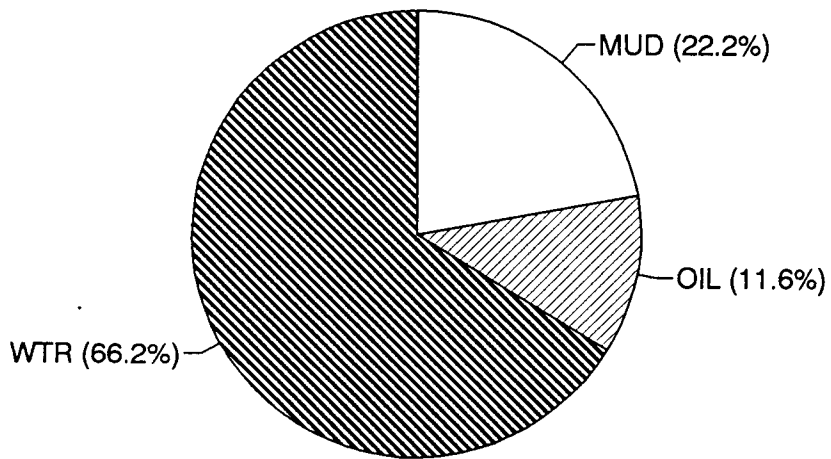


This is an actual photograph of recorder chart

	FIELD READING	OFFICE READING
(A) INITIAL HYDROSTATIC MUD	2128	2130.6
(B) FIRST INITIAL FLOW PRESSURE	48	44.6
(C) FIRST FINAL FLOW PRESSURE	72	74.3
(D) INITIAL CLOSED-IN PRESSURE	888	891.2
(E) SECOND INITIAL FLOW PRESSURE	109	111.2
(F) SECOND FINAL FLOW PRESSURE	133	141.6
(G) FINAL CLOSED-IN PRESSURE	853	850.7
(H) FINAL HYDROSTATIC MUD	2080	2079.4

DST #	CALCULATED RECOVERY ANALYSIS					DRILL	PIPE	
	5	TICKET					5233	
SAMPLE #	TOTAL FEET	GAS %	OIL FEET	OIL %	WATER FEET	WATER %	MUD FEET	MUD %
1	30	0	0	100	30	0	0	0
2	240	0	0	0.5	1.2	74.5	178.8	25
3			0		0		0	0
4			0		0		0	0
5			0		0		0	0
TOTAL	270	0	0	11.6	31.2	66.222222	178.8	22.2

		HRS	BBL/DAY
BBL OIL=	0.443664	*	1.5 7.0986
BBL WATER=	2.542536	*	40.681
BBL MUD=	0.8532		
BBL GAS	0		



TRILOBITE TESTING L.L.C.

P.O. Box 362 • Hays, Kansas 67601

Test Ticket

№ 5233

Well Name & No. <u>MAUTER 1^H</u>	Test No. <u>5</u>	Date <u>9-28-92</u>
Company <u>RITCHIE EXP INC</u>	Zone Tested <u>L-KC</u>	
Address <u>25 N MARKET ST #1000 WICHITA</u>	Elevation <u>2756 MIB</u>	
Co. Rep./Geo. <u>KEVIN KESSTER</u>	Cont. <u>N+E Rig 9</u>	Est. Ft. of Pay _____
Location: Sec. <u>4</u>	Twp. <u>19S</u>	Rge. <u>29W</u> Co. <u>LANE</u> State <u>KS</u>
No. of Copies _____	Distribution Sheet _____	Yes _____ No _____ Turnkey _____ Yes _____ No _____ Evaluation _____

Interval Tested <u>4259-4280</u>	Drill Pipe Size <u>4 1/2 XH</u>
Anchor Length <u>21</u>	Top Choke — 1" _____ Bottom Choke — 3/4" _____
Top Packer Depth <u>4259</u>	Hole Size — 7 7/8" _____ Rubber Size — 6 3/4" _____
Bottom Packer Depth _____	Wt. Pipe I.D. — 2.7 Ft. Run _____
Total Depth <u>4280</u>	Drill Collar — 2.25 Ft. Run _____
Mud Wt. <u>9.2</u> <u>LCM</u> — lb/gal.	Viscosity <u>49</u> Filtrate <u>8.8</u>
Tool Open @ <u>12:15</u>	Initial Blow <u>OPEN 1" Blow to 28 MIN OFF</u>
<u>Bottom</u>	
Final Blow <u>SWA to BOTTOM IN 32 MIN</u>	

Recovery — Total Feet <u>270</u>	Feet of Gas in Pipe <u>30</u>	Flush Tool? _____
Rec. <u>30</u> Feet Of <u>COIL</u>	%gas <u>100%</u> Oil _____	%water _____ %mud _____
Rec. 240 Feet Of 50 MUD WATER	%gas _____ Oil _____	%water _____ %mud _____
Rec. <u>240</u> Feet Of <u>50 MUD WATER</u>	%gas <u>1/2</u> Oil <u>74 1/2</u>	%water <u>25</u> %mud _____
Rec. _____ Feet Of _____	%gas _____ Oil _____	%water _____ %mud _____
Rec. _____ Feet Of _____	%gas _____ Oil _____	%water _____ %mud _____

BHT <u>114</u> °F Gravity <u>38</u>	°API @ <u>80</u> °F Corrected Gravity <u>39</u>	°API _____
RW <u>0.12</u> @ <u>77</u> °F	Chlorides <u>48000</u> ppm	Recovery Chlorides <u>4000</u> ppm System
(A) Initial Hydrostatic Mud <u>2128</u>	PSI Ak1 Recorder No. <u>11057</u>	Range <u>4500</u>
(B) First Initial Flow Pressure <u>48</u>	PSI @ (depth) <u>4261</u>	w/Clock No. <u>7452</u>
(C) First Final Flow Pressure <u>72</u>	PSI AK1 Recorder No. <u>13308</u>	Range <u>4700</u>
(D) Initial Shut-In Pressure <u>888</u>	PSI @ (depth) <u>4275</u>	w/Clock No. <u>19960</u>
(E) Second Initial Flow Pressure <u>109</u>	PSI AK1 Recorder No. _____	Range _____
(F) Second Final Flow Pressure <u>133</u>	PSI @ (depth) _____	w/Clock No. _____
(G) Final Shut-In Pressure <u>853</u>	PSI Initial Opening <u>45</u>	Test <input checked="" type="checkbox"/>
(H) Final Hydrostatic Mud <u>2080</u>	PSI Initial Shut-In <u>45</u>	Jars _____

TRILOBITE TESTING L.L.C. SHALL NOT BE LIABLE FOR DAMAGE OF ANY KIND OF THE PROPERTY OR PERSONNEL OF THE ONE FOR WHOM A TEST IS MADE, OR FOR ANY LOSS SUFFERED OR SUSTAINED, DIRECTLY OR INDIRECTLY, THROUGH THE USE OF ITS EQUIPMENT, OR ITS STATEMENTS OR OPINION CONCERNING THE RESULTS OF ANY TEST. TOOLS LOST OR DAMAGED IN THE HOLE SHALL BE PAID FOR AT COST BY THE PARTY FOR WHOM THE TEST IS MADE.

Final Flow <u>45</u>	Safety Joint _____
Final Shut-In <u>45</u>	Straddle _____
<u>Run Single Packer</u>	Sub <input checked="" type="checkbox"/> <u>NC</u>
	Sampler _____
	Extra Packer _____
	Other _____
	TOTAL PRICE \$ _____

Approved By Kevin Kesster
Our Representative Mark Herberg

TRILOBITE TESTING, L.L.C.

P.O. Box 362 • Hays, Kansas 67601

Drill-Stem Test Data

Well Name #1 MAULER Test No. 6 Date 9/29/92
Company RITCHIE EXPLORATION, INC. Zone LKC
Address 125 N MARKET SUITE 1000 WICHITA KS 67202 Elevation 2756
Co. Rep./Geo. KEVIN KESSLER Cont. WHITE & ELLIS RIG #9 Est. Ft. of Pay _____
Location: Sec. 4 Twp. 19S Rge. 28W Co. LANE State KS

Interval Tested 4286-4320 Drill Pipe Size 4.5" XH
Anchor Length 34 Wt. Pipe I.D. - 2.7 Ft. Run _____
Top Packer Depth 4286 Drill Collar - 2.25 Ft. Run _____
Bottom Packer Depth _____ Mud Wt. 9.1 lb/Gal.
Total Depth 4320 Viscosity 53 Filtrate 8.8

Tool Open @ 6:21 AM Initial Blow OPEN 1/2" BLOW TO NO BLOW IN 28 MINUTES

Final Blow WEAK SURFACE BLOW FOR 2 MINUTES--(NO BLOW)

Recovery - Total Feet 15 Flush Tool? NO

Rec. 15 Feet of SLTLY OIL STAINED MUD
Rec. _____ Feet of _____
Rec. _____ Feet of _____
Rec. _____ Feet of _____
Rec. _____ Feet of _____

BHT 115 °F Gravity _____ °API @ _____ °F Corrected Gravity _____ °API
RW _____ @ _____ °F Chlorides _____ ppm Recovery Chlorides 4000 ppm System

(A) Initial Hydrostatic Mud 2144.8 PSI AK1 Recorder No. 11057 Range 4500

(B) First Initial Flow Pressure 40.6 PSI @ (depth) 4288 w / Clock No. 7452

(C) First Final Flow Pressure 40.6 PSI AK1 Recorder No. 13308 Range 4700

(D) Initial Shut-in Pressure 350.8 PSI @ (depth) 4315 w / Clock No. 19960

(E) Second Initial Flow Pressure 40.6 PSI AK1 Recorder No. _____ Range _____

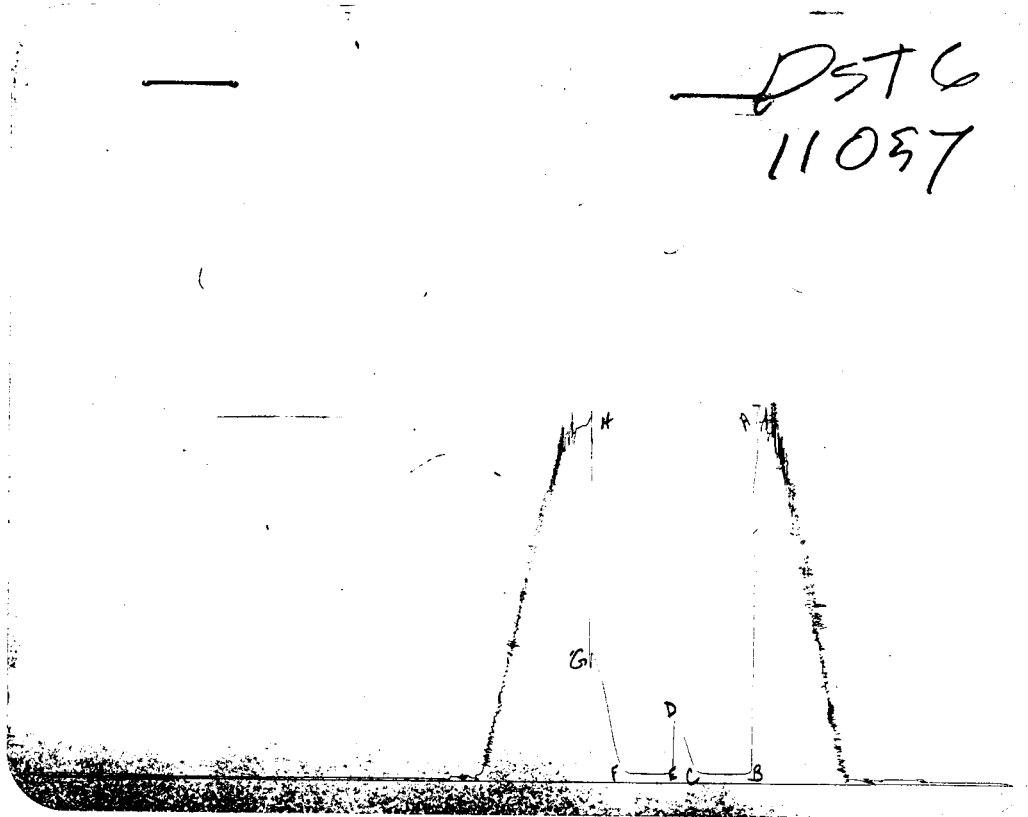
(F) Second Final Flow Pressure 40.6 PSI @ (depth) _____ w / Clock No. _____

(G) Final Shut-in Pressure 739.8 PSI Initial Opening 30 Final Flow 30

(H) Final Hydrostatic Mud 2106.9 PSI Initial Shut-in 30 Final Shut-in 30

Our Representative MARK HERSKOWITZ

CHART PAGE



This is an actual photograph of recorder chart

	FIELD READING	OFFICE READING
(A) INITIAL HYDROSTATIC MUD	2140	2144.8
(B) FIRST INITIAL FLOW PRESSURE	36	40.6
(C) FIRST FINAL FLOW PRESSURE	36	40.6
(D) INITIAL CLOSED-IN PRESSURE	347	350.8
(E) SECOND INITIAL FLOW PRESSURE	36	40.6
(F) SECOND FINAL FLOW PRESSURE	36	40.6
(G) FINAL CLOSED-IN PRESSURE	736	739.8
(H) FINAL HYDROSTATIC MUD	2104	2106.9

TRILOBITE TESTING L.L.C.

P.O. Box 362 • Hays, Kansas 67601

Test Ticket

№ 5234

Well Name & No. <u>MAUTER 1st</u>	Test No. <u>6</u>	Date <u>9-29-92</u>
Company <u>RITCHIE EXP INC</u>	Zone Tested <u>L-KC</u>	
Address <u>125N MARKET STE 1000 WICHITA</u>	Elevation <u>2756 K13</u>	
Co. Rep./Geo. <u>KEVIN KESSTER</u>	cont. <u>WFE Rig 9</u>	Est. Ft. of Pay _____
Location: Sec. <u>4</u>	Twp. <u>19S</u>	Rge. <u>29W</u> Co. <u>LANE</u> State <u>KS</u>
No. of Copies _____	Distribution Sheet _____	Yes _____ No _____ Turnkey _____ Yes _____ No _____ Evaluation _____

Interval Tested <u>4286 - 4320</u>	Drill Pipe Size <u>4 1/2 XH</u>
Anchor Length <u>34</u>	Top Choke - 1" _____ Bottom Choke - 3/4" _____
Top Packer Depth <u>4286</u>	Hole Size - 7 7/8" _____ Rubber Size - 6 3/4" _____
Bottom Packer Depth _____	Wt. Pipe I.D. - 2.7 Ft. Run _____
Total Depth <u>4320</u>	Drill Collar - 2.25 Ft. Run _____
Mud Wt. <u>9.1</u> <u>LCM</u> - lb/gal.	Viscosity <u>53</u> Filtrate <u>8.8</u>
Tool Open @ <u>6:21 AM</u>	Initial Blow <u>OPEN 1/2" Blow to NO Blow in 28 min</u>

Final Blow WEAK SUR Blow For 2 MIN (No Blow)

Recovery - Total Feet	Feet of Gas in Pipe	Flush Tool?
Rec. <u>15</u> Feet Of <u>509 Mud</u>	% gas <u>1/2</u> % oil _____ % water <u>89 1/2</u> % mud _____	
Rec. _____ Feet Of _____	% gas _____ % oil _____ % water _____ % mud _____	
Rec. _____ Feet Of _____	% gas _____ % oil _____ % water _____ % mud _____	
Rec. _____ Feet Of _____	% gas _____ % oil _____ % water _____ % mud _____	
Rec. _____ Feet Of _____	% gas _____ % oil _____ % water _____ % mud _____	

BHT 115 °F Gravity _____ °API @ _____ °F Corrected Gravity _____ °API

RW _____ @ _____ °F Chlorides _____ ppm Recovery Chlorides 4000 ppm System

- (A) Initial Hydrostatic Mud 2140 PSI AK1 Recorder No. 11057 Range 4500
- (B) First Initial Flow Pressure 36 PSI @ (depth) 4288 w/Clock No. 7452
- (C) First Final Flow Pressure 36 PSI AK1 Recorder No. 13308 Range 4700
- (D) Initial Shut-in Pressure 347 PSI @ (depth) 4315 w/Clock No. 19960
- (E) Second Initial Flow Pressure 36 PSI AK1 Recorder No. _____ Range _____
- (F) Second Final Flow Pressure 36 PSI @ (depth) _____ w/Clock No. _____
- (G) Final Shut-in Pressure 236 PSI Initial Opening 30 Test ✓
- (H) Final Hydrostatic Mud 2104 PSI Initial Shut-in 30 Jars _____

TRILOBITE TESTING L.L.C. SHALL NOT BE LIABLE FOR DAMAGE OF ANY KIND OF THE PROPERTY OR PERSONNEL OF THE ONE FOR WHOM A TEST IS MADE, OR FOR ANY LOSS SUFFERED OR SUSTAINED, DIRECTLY OR INDIRECTLY, THROUGH THE USE OF ITS EQUIPMENT, OR ITS STATEMENTS OR OPINION CONCERNING THE RESULTS OF ANY TEST. TOOLS LOST OR DAMAGED IN THE HOLE SHALL BE PAID FOR AT COST BY THE PARTY FOR WHOM THE TEST IS MADE.

Final Flow 30 Safety Joint _____
Final Shut-in 30 Straddle _____
Circ. Sub ✓ NC
Sampler _____
Extra Packer _____
Other _____

Approved By [Signature]
Our Representative [Signature]

TRILOBITE TESTING, L.L.C.

P.O. Box 362 • Hays, Kansas 67601

Drill-Stem Test Data

Well Name #1 MAULER Test No. 7 Date 9/30/92
Company RITCHIE EXPLORATION, INC. Zone JOHNSON
Address 125 N MARKET SUITE 1000 WICHITA KS 67202 Elevation 2756
Co. Rep./Geo. KEVIN KESSLER Cont. WHITE & ELLIS RIG #9 Est. Ft. of Pay _____
Location: Sec. 4 Twp. 19S Rge. 28W Co. LANE State KS

Interval Tested 4534-4586 Drill Pipe Size 4.5" XH
Anchor Length 52 Wt. Pipe I.D. - 2.7 Ft. Run _____
Top Packer Depth 4529 Drill Collar - 2.25 Ft. Run _____
Bottom Packer Depth 4534 Mud Wt. 9.2 lb/Gal.
Total Depth 4586 Viscosity 53 Filtrate 11.2

Tool Open @ 6:54 PM Initial Blow LOST 150' MUD-BLOW OFF BOTTOM IN 1 MINUTE
30 SECONDS-PACKER FAILURE

Final Blow PACKER FAILURE

Recovery - Total Feet 590 Flush Tool? NO

Rec. 590 Feet of MUD
Rec. _____ Feet of _____
Rec. _____ Feet of _____
Rec. _____ Feet of _____
Rec. _____ Feet of _____

BHT 116 °F Gravity _____ °API @ _____ °F Corrected Gravity _____ °API
RW _____ @ _____ °F Chlorides _____ ppm Recovery Chlorides 2500 ppm System

(A) Initial Hydrostatic Mud 2260.1 PSI AK1 Recorder No. 11057 Range 4500

(B) First Initial Flow Pressure 119.7 PSI @ (depth) 4550 w / Clock No. 7452

(C) First Final Flow Pressure _____ PSI AK1 Recorder No. 13308 Range 4700

(D) Initial Shut-in Pressure _____ PSI @ (depth) 4581 w / Clock No. 19960

(E) Second Initial Flow Pressure _____ PSI AK1 Recorder No. _____ Range _____

(F) Second Final Flow Pressure _____ PSI @ (depth) _____ w / Clock No. _____

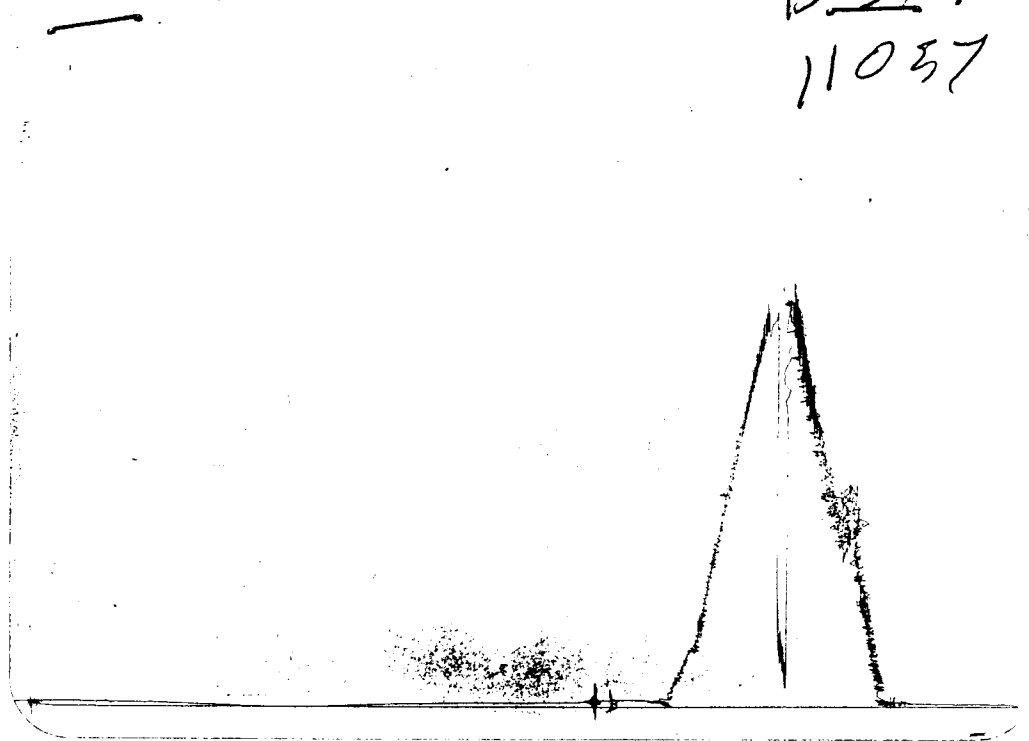
(G) Final Shut-in Pressure _____ PSI Initial Opening 5 Final Flow _____

(H) Final Hydrostatic Mud 2212.4 PSI Initial Shut-in _____ Final Shut-in _____

Our Representative MARK HERSKOWITZ

CHART PAGE

DST 7
11037



This is an actual photograph of recorder chart

	FIELD READING	OFFICE READING
(A) INITIAL HYDROSTATIC MUD	2259	2260.1
(B) FIRST INITIAL FLOW PRESSURE	121	119.7
(C) FIRST FINAL FLOW PRESSURE		
(D) INITIAL CLOSED-IN PRESSURE		
(E) SECOND INITIAL FLOW PRESSURE		
(F) SECOND FINAL FLOW PRESSURE		
(G) FINAL CLOSED-IN PRESSURE		
(H) FINAL HYDROSTATIC MUD	2211	2212.4

TRILOBITE TESTING L.L.C.

P.O. Box 362 • Hays, Kansas 67601

Test Ticket

NE 5235

Well Name & No. MAULLER 1st Test No. 7 Date 9-30-91
 Company RITCHIE EXP INC Zone Tested JOHNSON
 Address 125 N MARKET STE 1000 WICHITA Elevation 2750 KB
 Co. Rep./Geo. KEVIN KESSLER cont. W&E Rig 9 Est. Ft. of Pay _____
 Location: Sec. 4 Twp. 19 S Rge. 29 W Co. LANE State KS
 No. of Copies _____ Distribution Sheet _____ Yes _____ No _____ Turnkey _____ Yes _____ No _____ Evaluation _____

Interval Tested 4534 - 4586 Drill Pipe Size 4 1/2 XH
 Anchor Length 52 Top Choke - 1" _____ Bottom Choke - 3/4" _____
 Top Packer Depth 4529 Hole Size - 7 7/8" _____ Rubber Size - 6 3/4" _____
 Bottom Packer Depth 4534 Wt. Pipe I.D. - 2.7 Ft. Run _____
 Total Depth 4586 Drill Collar - 2.25 Ft. Run _____
 Mud Wt. 9.2 LCM lb/gal. Viscosity 53 Filtrate 11.2
 Tool Open @ 6:54 PM Initial Blow Loss 150 MUD Blow off Bottle
1 Min 30 Sec Final Blow PACKER FAILURE

Recovery - Total Feet	Feet of Gas in Pipe	Flush Tool?			
Rec. <u>590</u> Feet Of	<u>MUD</u>	% gas	% oil	% water	% mud
Rec. _____ Feet Of	_____	% gas	% oil	% water	% mud
Rec. _____ Feet Of	_____	% gas	% oil	% water	% mud
Rec. _____ Feet Of	_____	% gas	% oil	% water	% mud
Rec. _____ Feet Of	_____	% gas	% oil	% water	% mud

BHT 116 °F Gravity _____ °API @ _____ °F Corrected Gravity _____ °API
 RW _____ @ _____ °F Chlorides _____ ppm Recovery Chlorides 2500 ppm System
 (A) Initial Hydrostatic Mud 2259 PSI AK1 Recorder No. 11057 Range 4500
 (B) First Initial Flow Pressure 121 PSI @ (depth) 4550 w/Clock No. 2452
 (C) First Final Flow Pressure _____ PSI AK1 Recorder No. 13308 Range 4700
 (D) Initial Shut-In Pressure _____ PSI @ (depth) 4581 w/Clock No. 29960
 (E) Second Initial Flow Pressure _____ PSI AK1 Recorder No. _____ Range _____
 (F) Second Final Flow Pressure _____ PSI @ (depth) _____ w/Clock No. _____
 (G) Final Shut-In Pressure _____ PSI Initial Opening 5 Test
 (H) Final Hydrostatic Mud 2211 PSI Initial Shut-In _____ Jars _____

TRILOBITE TESTING L.L.C. SHALL NOT BE LIABLE FOR DAMAGE OF ANY KIND OF THE PROPERTY OR PERSONNEL OF THE ONE FOR WHOM A TEST IS MADE, OR FOR ANY LOSS SUFFERED OR SUSTAINED, DIRECTLY OR INDIRECTLY, THROUGH THE USE OF ITS EQUIPMENT, OR ITS STATEMENTS OR OPINION CONCERNING THE RESULTS OF ANY TEST. TOOLS LOST OR DAMAGED IN THE HOLE SHALL BE PAID FOR AT COST BY THE PARTY FOR WHOM THE TEST IS MADE.

Final Flow _____ Safety Joint _____
 Final Shut-In _____ Straddle _____
 Circ. Sub INC
 Sampler _____

Approved By _____
 Our Representative Mark Kerney

Extra Packer _____
 Other _____
 TOTAL PRICE \$ 400.00

TRILOBITE TESTING, L.L.C.

P.O. Box 362 • Hays, Kansas 67601

Drill-Stem Test Data

Well Name #1 MAULER Test No. 8 Date 9/30/92
Company RITCHIE EXPLORATION, INC. Zone JOHNSON
Address 125 N MARKET SUITE 1000 WICHITA KS 67202 Elevation 2756
Co. Rep./Geo. KEVIN KESSLER Cont. WHITE & ELLIS RIG #9 Est. Ft. of Pay _____
Location: Sec. 4 Twp. 19S Rge. 28W Co. LANE State KS

Interval Tested	<u>4506-4586</u>	Drill Pipe Size	<u>4.5" XH</u>
Anchor Length	<u>80</u>	Wt. Pipe I.D. - 2.7 Ft. Run	_____
Top Packer Depth	<u>4498</u>	Drill Collar - 2.25 Ft. Run	_____
Bottom Packer Depth	<u>4506</u>	Mud Wt.	<u>9.2</u> lb/Gal.
Total Depth	<u>4586</u>	Viscosity	<u>53</u> Filtrate <u>11.2</u>

Tool Open @ 12:29 AM ^{Initial Blow} OPEN 1/2" TO NO BLOW IN 30 MINUTES

Final Blow NO BLOW

Recovery - Total Feet 10 Flush Tool? NO

Rec. 10 Feet of SLTLY OIL STAINED MUD
Rec. _____ Feet of _____
Rec. _____ Feet of _____
Rec. _____ Feet of _____
Rec. _____ Feet of _____

BHT 116 °F Gravity _____ °API @ _____ °F Corrected Gravity _____ °API
RW _____ @ _____ °F Chlorides _____ ppm Recovery Chlorides 2500 ppm System

(A) Initial Hydrostatic Mud 2180.6 PSI AK1 Recorder No. 11057 Range 4500

(B) First Initial Flow Pressure 44.6 PSI @ (depth) 4519 w / Clock No. 7452

(C) First Final Flow Pressure 44.6 PSI AK1 Recorder No. 13308 Range 4700

(D) Initial Shut-in Pressure 74.3 PSI @ (depth) 4514 w / Clock No. 19960

(E) Second Initial Flow Pressure 44.6 PSI AK1 Recorder No. _____ Range _____

(F) Second Final Flow Pressure 44.6 PSI @ (depth) _____ w / Clock No. _____

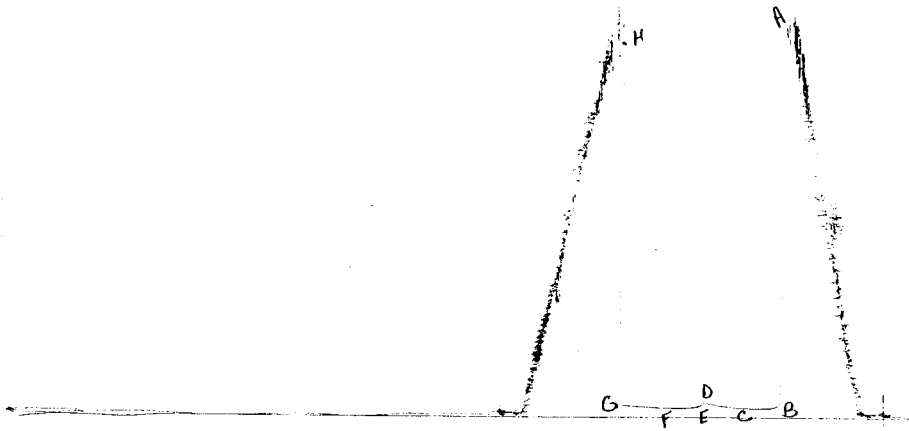
(G) Final Shut-in Pressure 62.5 PSI Initial Opening 30 Final Flow 30

(H) Final Hydrostatic Mud 2109.6 PSI Initial Shut-in 30 Final Shut-in 30

Our Representative MARK HERSKOWITZ

CHART PAGE

~~D548~~
11057



This is an actual photograph of recorder chart

	FIELD READING	OFFICE READING
(A) INITIAL HYDROSTATIC MUD	2175	2180.6
(B) FIRST INITIAL FLOW PRESSURE	48	44.6
(C) FIRST FINAL FLOW PRESSURE	48	44.6
(D) INITIAL CLOSED-IN PRESSURE	72	74.3
(E) SECOND INITIAL FLOW PRESSURE	48	44.6
(F) SECOND FINAL FLOW PRESSURE	48	44.6
(G) FINAL CLOSED-IN PRESSURE	60	62.5
(H) FINAL HYDROSTATIC MUD	2104	2109.6

TRILOBITE TESTING L.L.C.

P.O. Box 362 • Hays, Kansas 67601

Test Ticket

NO 5236

Well Name & No. <u>MAULER 1</u>	Test No. <u>8</u>	Date <u>9-30-92</u>
Company <u>RITCHIE EXP INC</u>	Zone Tested <u>JOHNSON #1500</u>	
Address <u>125 N MARKET STE 1000 WICHITA</u>	Elevation <u>2754 KB</u>	
CO. Rep./Geo. <u>KEVIN KESSLES</u>	Cont. <u>W&E Rig 9</u>	Est. Ft. of Pay _____
Location: Sec. <u>4</u>	Twp. <u>19S</u>	Rge. <u>29W</u> Co. <u>LANE</u> State <u>KS</u>
No. of Copies _____	Distribution Sheet _____	Yes _____ No _____ Turnkey _____ Yes _____ No _____ Evaluation _____

Interval Tested <u>4506 - 4580</u>	Drill Pipe Size <u>4 1/2 XH</u>
Anchor Length <u>80</u>	Top Choke — 1" _____ Bottom Choke — 3/4" _____
Top Packer Depth <u>4498</u>	Hole Size — 7 7/8" _____ Rubber Size — 6 3/4" _____
Bottom Packer Depth <u>4500</u>	Wt. Pipe I.D. — 2.7 Ft. Run _____
Total Depth <u>4580</u>	Drill Collar — 2.25 Ft. Run _____
Mud Wt. <u>9.2 LCM</u> _____ lb/gal.	Viscosity <u>53</u> Filtrate <u>11.2</u>
Tool Open @ <u>12:29 AM</u>	Initial Blow <u>OPEN 1/2" TO NO BLOW IN 30 MIN</u>
Final Blow <u>No Blow</u>	

Recovery — Total Feet	Feet of Gas in Pipe	Flush Tool?
Rec. <u>10</u> Feet Of <u>SOB MUD</u>	% gas <u>1/5</u> % Oil _____ % water <u>99 1/2</u> % mud _____	
Rec. _____ Feet Of _____	% gas _____ % Oil _____ % water _____ % mud _____	
Rec. _____ Feet Of _____	% gas _____ % Oil _____ % water _____ % mud _____	
Rec. _____ Feet Of _____	% gas _____ % Oil _____ % water _____ % mud _____	
Rec. _____ Feet Of _____	% gas _____ % Oil _____ % water _____ % mud _____	

BHT <u>110</u> °F Gravity _____ °API @ _____ °F Corrected Gravity _____ °API
RW _____ @ _____ °F Chlorides _____ ppm Recovery Chlorides <u>2500</u> ppm System
(A) Initial Hydrostatic Mud <u>2175</u> PSI Ak1 Recorder No. <u>11057</u> Range <u>4500</u>
(B) First Initial Flow Pressure <u>48</u> PSI @ (depth) <u>4519</u> w/Clock No. <u>7452</u>
(C) First Final Flow Pressure <u>48</u> PSI AK1 Recorder No. <u>13308</u> Range <u>4700</u>
(D) Initial Shut-In Pressure <u>72</u> PSI @ (depth) <u>4514</u> w/Clock No. <u>19460</u>
(E) Second Initial Flow Pressure <u>48</u> PSI AK1 Recorder No. _____ Range _____
(F) Second Final Flow Pressure <u>48</u> PSI @ (depth) _____ w/Clock No. _____
(G) Final Shut-in Pressure <u>60</u> PSI Initial Opening <u>30</u> Test <input checked="" type="checkbox"/>
(H) Final Hydrostatic Mud <u>2104</u> PSI Initial Shut-in <u>30</u> Jars _____

TRILOBITE TESTING L.L.C. SHALL NOT BE LIABLE FOR DAMAGE OF ANY KIND OF THE PROPERTY OR PERSONNEL OF THE ONE FOR WHOM A TEST IS MADE, OR FOR ANY LOSS SUFFERED OR SUSTAINED, DIRECTLY OR INDIRECTLY, THROUGH THE USE OF ITS EQUIPMENT, OR ITS STATEMENTS OR OPINION CONCERNING THE RESULTS OF ANY TEST. TOOLS LOST OR DAMAGED IN THE HOLE SHALL BE PAID FOR AT COST BY THE PARTY FOR WHOM THE TEST IS MADE.

Final Flow <u>30</u>	Safety Joint _____
Final Shut-in <u>30</u>	Straddle _____
	Circ. Sub <u>✓ NC</u>
	Sampler <u>550</u>
	Extra Packer <u>215 00</u>
	Other _____
	TOTAL PRICE \$ <u>765.00</u>

Approved By [Signature]
Our Representative [Signature]