

WELL NAME: Hansen #1
COMPANY: Dennis Roberts Oil
LOCATION: 23-19s-29w
Lane County, Kansas
DATE: 7/15/98

TRILOBITE TESTING L.L.C.

OPERATOR : Dennis Roberts Oil
 WELL NAME: Hansen #1
 LOCATION : 23-19s-29w Lane co. KS
 INTERVAL : 4173.00 To 4245.00 ft

DATE 7-10-98

KB 2826.00 ft TICKET NO: 11076 DST #1
 GR 2820.00 ft FORMATION: L-KC "H-I"
 TD 4245.00 ft TEST TYPE: CONV

RECORDER DATA

Mins	Field	1	2	3	4	TIME DATA-----
PF 30 Rec.	11057	11057	11058			PF Fr. 1645 to 1715 hr
SI 30 Range(Psi)	4500.0	4500.0	4475.0	0.0	0.0	IS Fr. 1715 to 1745 hr
SF 30 Clock(hrs)	12	12	12			SF Fr. 1745 to 1815 hr
FS 30 Depth(ft)	4242.0	4242.0	4208.0	0.0	0.0	FS Fr. 1815 to 1845 hr

	Field	1	2	3	4	
A. Init Hydro	2061.0	20341.0	0.0	0.0	0.0	T STARTED 1500 hr
B. First Flow	67.0	70.0	0.0	0.0	0.0	T ON BOTM 1640 hr
B1. Final Flow	67.0	76.0	0.0	0.0	0.0	T OPEN 1645 hr
C. In Shut-in	883.0	885.0	0.0	0.0	0.0	T PULLED 1845 hr
D. Init Flow	78.0	96.0	0.0	0.0	0.0	T OUT 2100 hr
E. Final Flow	67.0	90.0	0.0	0.0	0.0	
F. Fl Shut-in	872.0	878.0	0.0	0.0	0.0	
G. Final Hydro	2038.0	2018.0	0.0	0.0	0.0	TOOL DATA-----
Inside/Outside	0	0	I			Tool Wt. 5000.00 lbs
						Wt Set On Packer 26000.00 lbs
						Wt Pulled Loose 64000.00 lbs
						Initial Str Wt 48000.00 lbs
						Unseated Str Wt 48000.00 lbs
						Bot Choke 0.75 in
						Hole Size 7.88 in
						D Col. ID 2.25 in
						D. Pipe ID 3.80 in
						D.C. Length 30.00 ft
						D.P. Length 4167.00 ft

RECOVERY

Tot Fluid 122.00 ft of 30.00 ft in DC and 92.00 ft in DP
 61.00 ft of Oil cut mud 5% oil 95% mud
 61.00 ft of Slightly oil cut mud 2% oil 98% mud
 0.00 ft of
 0.00 ft of
 0.00 ft of
 0.00 ft of
 0.00 ft of
 0.00 ft of
 SALINITY 0.00 P.P.M. A.P.I. Gravity 0.00

MUD DATA-----

Mud Type	Chemical
Weight	9.30 lb/c
Vis.	46.00 S/L
W.L.	8.20 in3
F.C.	0.00 in
Mud Drop	
Amt. of fill	0.00 ft
Btm. H. Temp.	122.00 F
Hole Condition	
% Porosity	0.00
Packer Size	6.75 in
No. of Packers	2
Cushion Amt.	0.00
Cushion Type	
Reversed Out	
Tool Chased	
Tester	Shane McBride
Co. Rep.	Randy Killian
Contr.	Discovery
Rig #	2
Unit #	
Pump T.	

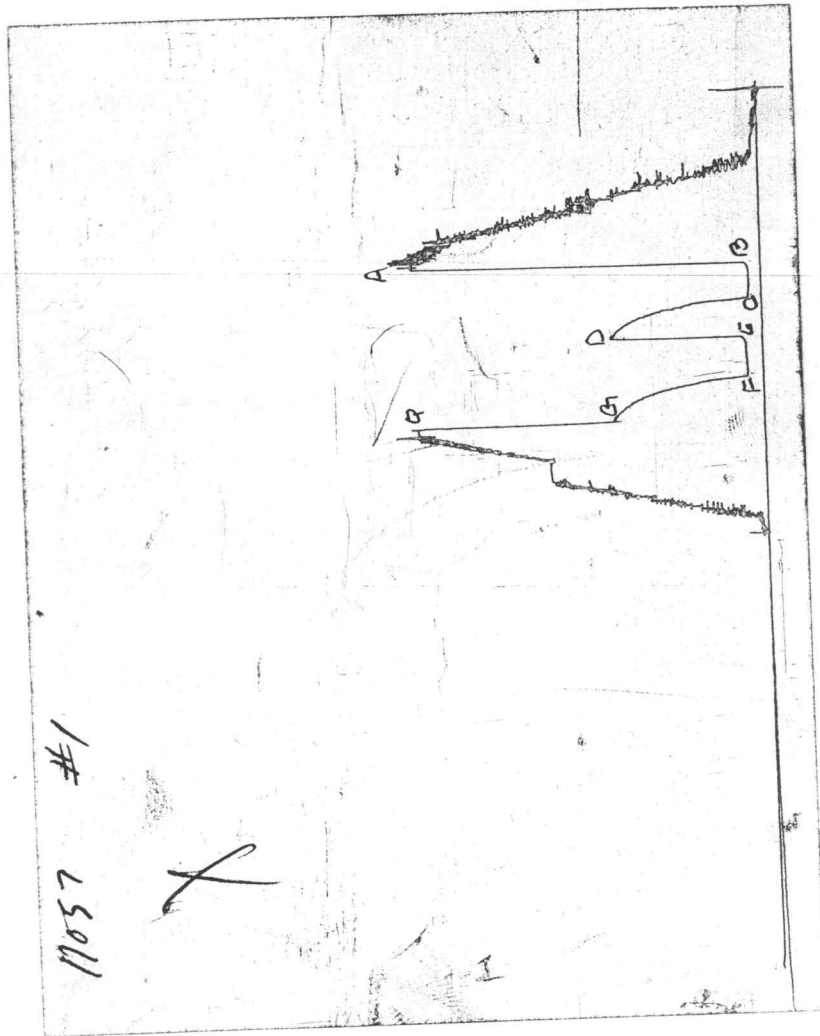
BLOW DESCRIPTION

Initial Flow:
 1/4" at open, slow build to 3/4"
 Initial Shut-in:
 No retrun
 Final Flow:
 Weak surface blow in 5 mins. built to 3/4"
 Final Shut-in:
 No return

SAMPLES:
 SENT TO:

Test Successful: Y

CHART PAGE



This is a photocopy of the actual AK-1 recorder chart

TRILOBITE TESTING L.L.C.

OPERATOR : Dennis Roberts Oil
 WELL NAME: Hansen #1
 LOCATION : 23-19s-29w Lane co. KS
 INTERVAL : 4320.00 To 4347.00 ft

DATE 7-11-98
 KB 2826.00 ft
 GR 2818.00 ft
 TD 4347.00 ft

TICKET NO: 11077
 FORMATION: Middle creek "L":
 DST #2
 TEST TYPE: CONV

RECORDER DATA

Mins	Field	1	2	3	4	TIME DATA-----
PF 30 Rec.	11057	11057	11058			PF Fr. 1145 to 1215 hr
SI 45 Range(Psi)	4500.0	4500.0	4475.0	0.0	0.0	IS Fr. 1215 to 1300 hr
SF 30 Clock(hrs)	12	12	12			SF Fr. 1300 to 1330 hr
FS 30 Depth(ft)	4344.0	4344.0	4328.0	0.0	0.0	FS Fr. 1330 to 1400 hr

	Field	1	2	3	4	
A. Init Hydro	2140.0	2128.0	0.0	0.0	0.0	T STARTED 1000 hr
B. First Flow	213.0	209.0	0.0	0.0	0.0	T ON BOTM 1140 hr
B1. Final Flow	627.0	631.0	0.0	0.0	0.0	T OPEN 1145 hr
C. In Shut-in	750.0	743.0	0.0	0.0	0.0	T PULLED 1400 hr
D. Init Flow	671.0	680.0	0.0	0.0	0.0	T OUT 1650 hr
E. Final Flow	727.0	724.0	0.0	0.0	0.0	
F. Fl Shut-in	738.0	735.0	0.0	0.0	0.0	
G. Final Hydro	2129.0	2115.0	0.0	0.0	0.0	TOOL DATA-----
Inside/Outside	0	0	I			Tool Wt. 4000.00 lbs
						Wt Set On Packer 26000.00 lbs
						Wt Pulled Loose 72000.00 lbs
						Initial Str Wt 47000.00 lbs
						Unseated Str Wt 56000.00 lbs
						Bot Choke 0.75 in
						Hole Size 7.88 in
						D Col. ID 2.25 in
						D. Pipe ID 3.80 in
						D.C. Length 30.00 ft
						D.P. Length 4290.00 ft

RECOVERY

Tot Fluid 1612.00 ft of 30.00 ft in DC and 1582.00 ft in DP
 60.00 ft of Gas in pipe
 40.00 ft of Clean gassy oil 20% gas 80% oil
 200.00 ft of Slight gas oil and mud cut water
 0.00 ft of 10% gas 30% oil 45% water
 300.00 ft of Slight gas oil and mud cut water
 0.00 ft of 5% gas 10% oil 70% water 15% mud
 200.00 ft of Slightly oil cut water 5% oil 70% water
 872.00 ft of Sulfur water
 SALINITY 19500.00 P.P.M. A.P.I. Gravity 0.00

MUD DATA-----

Mud Type	Chemical
Weight	9.40 lb/c
Vis.	48.00 S/L
W.L.	8.40 in3
F.C.	0.00 in
Mud Drop	

BLOW DESCRIPTION

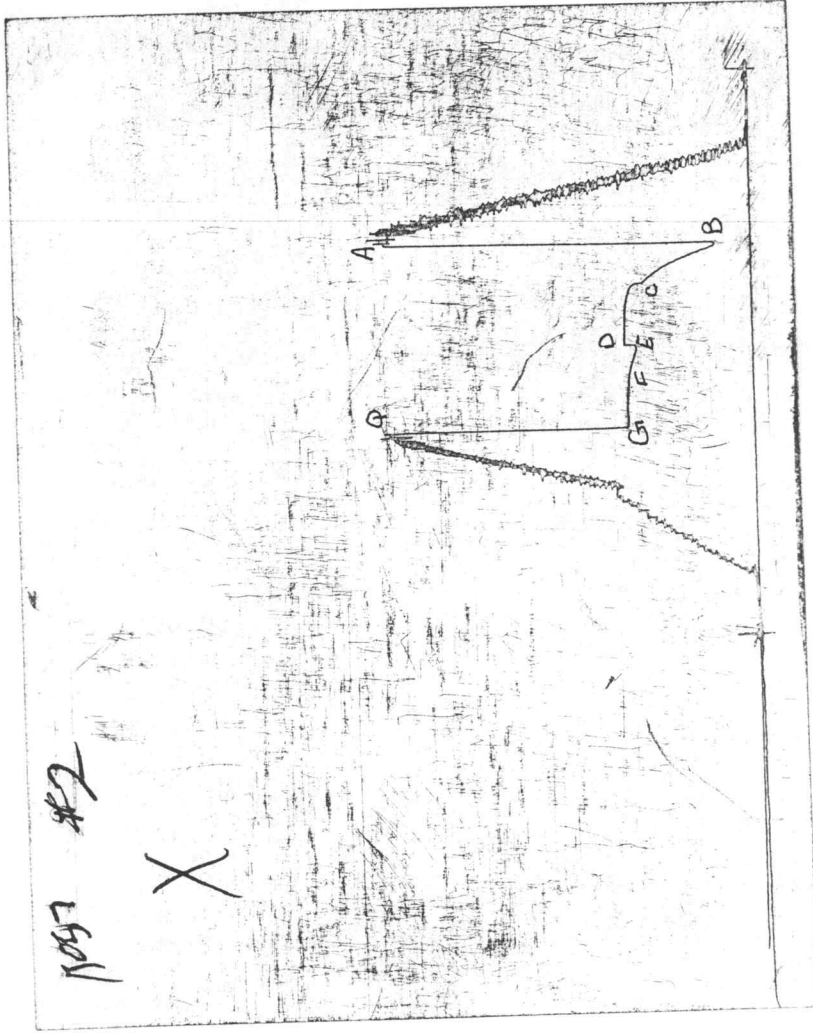
Initial Flow:
 Bottom of bucket in 1 1/2 mins.
 Initial Shut-in:
 Bled off for 1 1/2 mins. no return
 Final Flow:
 1/2" at open built to bottom of bucket in 4 1/2 mins. died back to 11"
 Final Shut-in:
 Bled off for 1 min. no return

Amt. of fill	0.00 ft
Btm. H. Temp.	128.00 F
Hole Condition	
% Porosity	0.00
Packer Size	6.75 in
No. of Packers	2
Cushion Amt.	0.00
Cushion Type	
Reversed Out	
Tool Chased	
Tester	Shane McBride
Co. Rep.	Randy Kilian
Contr.	Discovery
Rig #	2
Unit #	
Pump T.	

SAMPLES:
 SENT TO:

Test Successful: Y

CHART PAGE



This is a photocopy of the actual AK-1 recorder chart

TRILOBITE TESTING L.L.C.

OPERATOR : Dennis Roberts Oil DATE 7-12-98
 WELL NAME: Hansen #1 KB 2826.00 ft TICKET NO: 11078 DST #3
 LOCATION : 23-19s-29w Lane co. KS GR 2818.00 ft FORMATION: Marm. ALT A-B
 INTERVAL : 4390.00 To 4470.00 ft TD 4470.00 ft TEST TYPE: CONV

RECORDER DATA

Mins	Field	1	2	3	4	TIME DATA-----
PF 30 Rec.	11058	11058	11057			PF Fr. 0910 to 0940 hr
SI 30 Range(Psi)	4475.0	4475.0	4500.0	0.0	0.0	IS Fr. 0940 to 1010 hr
SF 30 Clock(hrs)	12	12	12			SF Fr. 1010 to 1040 hr
FS 30 Depth(ft)	4467.0	4467.0	4401.0	0.0	0.0	FS Fr. 1040 to 1110 hr

	Field	1	2	3	4	
A. Init Hydro	2233.0	2219.0	0.0	0.0	0.0	T STARTED 0700 hr
B. First Flow	233.0	230.0	0.0	0.0	0.0	T ON BOTM 0805 hr
B1. Final Flow	534.0	539.0	0.0	0.0	0.0	T OPEN 0810 hr
C. In Shut-in	997.0	987.0	0.0	0.0	0.0	T PULLED 1110 hr
D. Init Flow	579.0	575.0	0.0	0.0	0.0	T OUT 1445 hr
E. Final Flow	669.0	667.0	0.0	0.0	0.0	
F. Fl Shut-in	850.0	843.0	0.0	0.0	0.0	TOOL DATA-----
G. Final Hydro	2222.0	2200.0	0.0	0.0	0.0	Tool Wt. 5000.00 lbs
Inside/Outside	0	0	I			Wt Set On Packer 26000.00 lbs
						Wt Pulled Loose 76000.00 lbs
						Initial Str Wt 49000.00 lbs
						Unseated Str Wt 56000.00 lbs
						Bot Choke 0.75 in
						Hole Size 7.88 in
						D Col. ID 2.25 in
						D. Pipe ID 3.80 in
						D.C. Length 30.00 ft
						D.P. Length 4414.00 ft

RECOVERY

Tot Fluid 1767.00 ft of 30.00 ft in DC and 1737.00 ft in DP
 90.00 ft of Gas in pipe
 20.00 ft of Heavy mud cut gassy oil
 0.00 ft of 10% gas 50% oil 40% mud
 620.00 ft of Clean gassy oil 35% gas 65% oil
 520.00 ft of Slightly water and mud cut gassy oil
 0.00 ft of 30% gas 50% oil 5% water 15% mud
 607.00 ft of Gassy heavy mud cut oil
 0.00 ft of 35% gas 10% oil 15% water 40% mud
 SALINITY 0.00 P.P.M. A.P.I. Gravity 0.00

MUD DATA-----

Mud Type	Chemical
Weight	9.40 lb/c
Vis.	48.00 S/L
W.L.	8.40 in3
F.C.	0.00 in
Mud Drop	
Amt. of fill	0.00 ft
Btm. H. Temp.	129.00 F
Hole Condition	
% Porosity	0.00
Packer Size	6.75 in
No. of Packers	3
Cushion Amt.	0.00
Cushion Type	
Reversed Out	
Tool Chased	
Tester	Shane McBride
Co. Rep.	Randy Kilian
Contr.	Discovery
Rig #	2
Unit #	
Pump T.	

BLOW DESCRIPTION

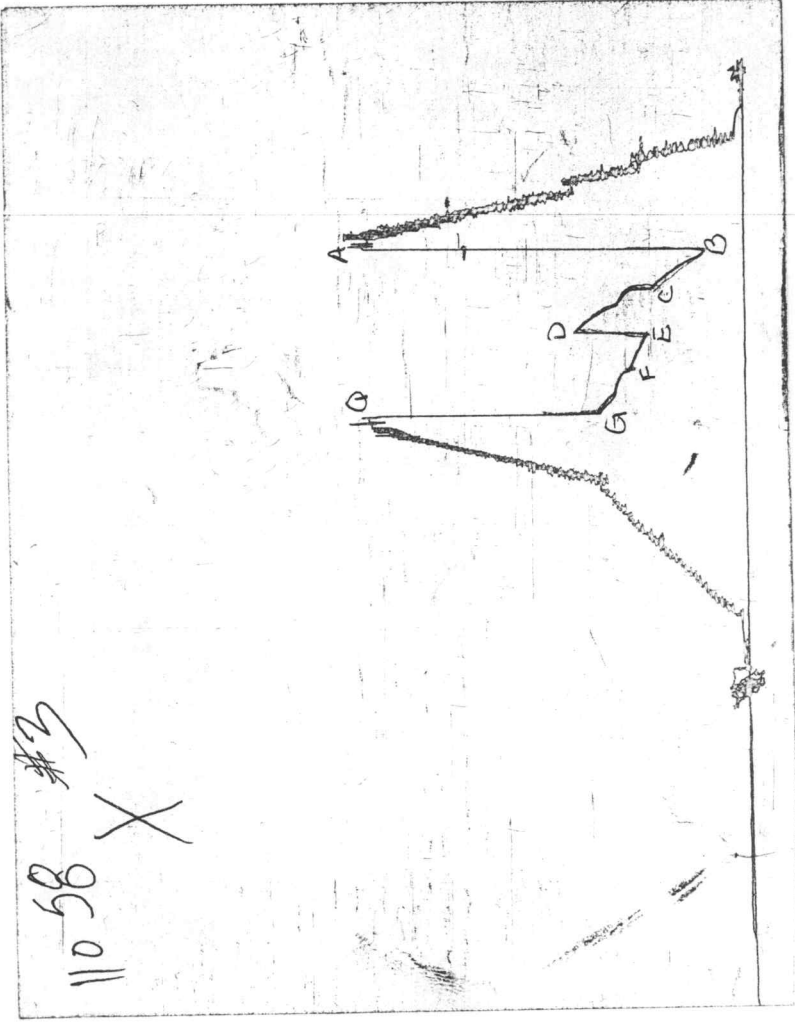
Initial Flow:
 Bottom of bucket in 1 1/2 mins.
 Initial Shut-in:
 Bled off for 2 mins. weak surface
 return in 5 mins. died in 18 mins.
 Final Flow:
 Bottom of bucket in 2 mins.
 Final Shut-in:
 Bled off for 1 1/2 mins. weak surface
 return in 5 mins.

SAMPLES:
 SENT TO:

Test Successful: Y

CHART PAGE

11058
#3
X



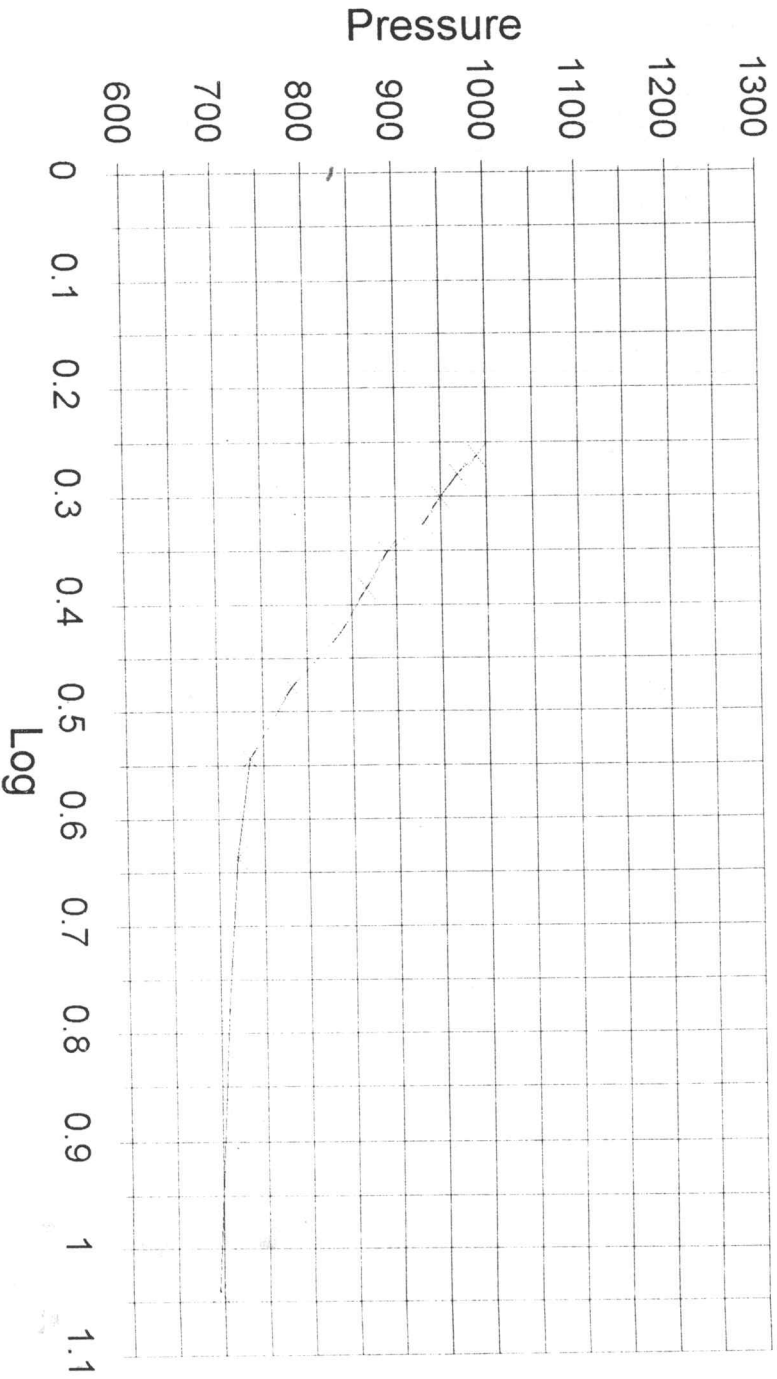
This is a photocopy of the actual AK-1 recorder chart

	Time	Pressure PSI _g	Log Horn T	∠ Pressure	(T+dT)/dT
***Start Shutin 1	3	696.0	1.041	696.0	11.0
	6	710.0	0.778	14.0	6.0
	9	721.0	0.637	11.0	4.3
	12	736.0	0.544	15.0	3.5
	15	783.0	0.477	47.0	3.0
	18	838.0	0.426	55.0	2.7
	21	867.0	0.385	29.0	2.4
	24	890.0	0.352	23.0	2.3
	27	931.0	0.325	41.0	2.1
	30	950.0	0.301	19.0	2.0
	33	969.0	0.281	19.0	1.9
	36	990.0	0.263	21.0	1.8

	Time	Pressure PSIg	Log Horn T	<> Pressure	(T+dT)/dT
***Start Shutin 2	3	690.0	1.322	690.0	21.0
	6	717.0	1.041	27.0	11.0
	9	731.0	0.885	14.0	7.7
	12	748.0	0.778	17.0	6.0
	15	750.0	0.699	2.0	5.0
	18	756.0	0.637	6.0	4.3
	21	772.0	0.586	16.0	3.9
	24	791.0	0.544	19.0	3.5
	27	815.0	0.508	24.0	3.2
	30	832.0	0.477	17.0	3.0
	33	847.0	0.450	15.0	2.8
	36	856.0	0.426	9.0	2.7

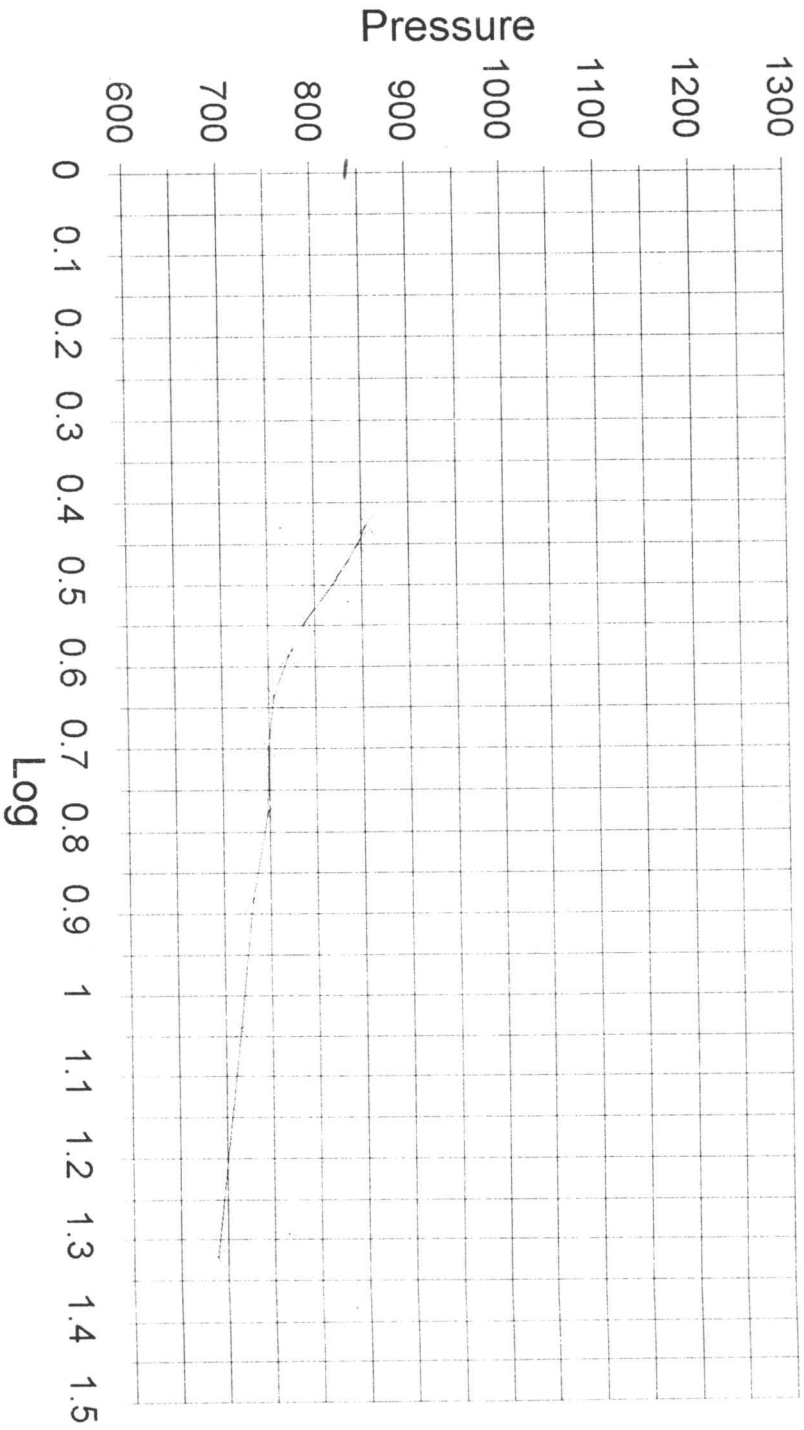
Horner Plot: Shut-in #1

P * 1268.65 Slope 1058.521



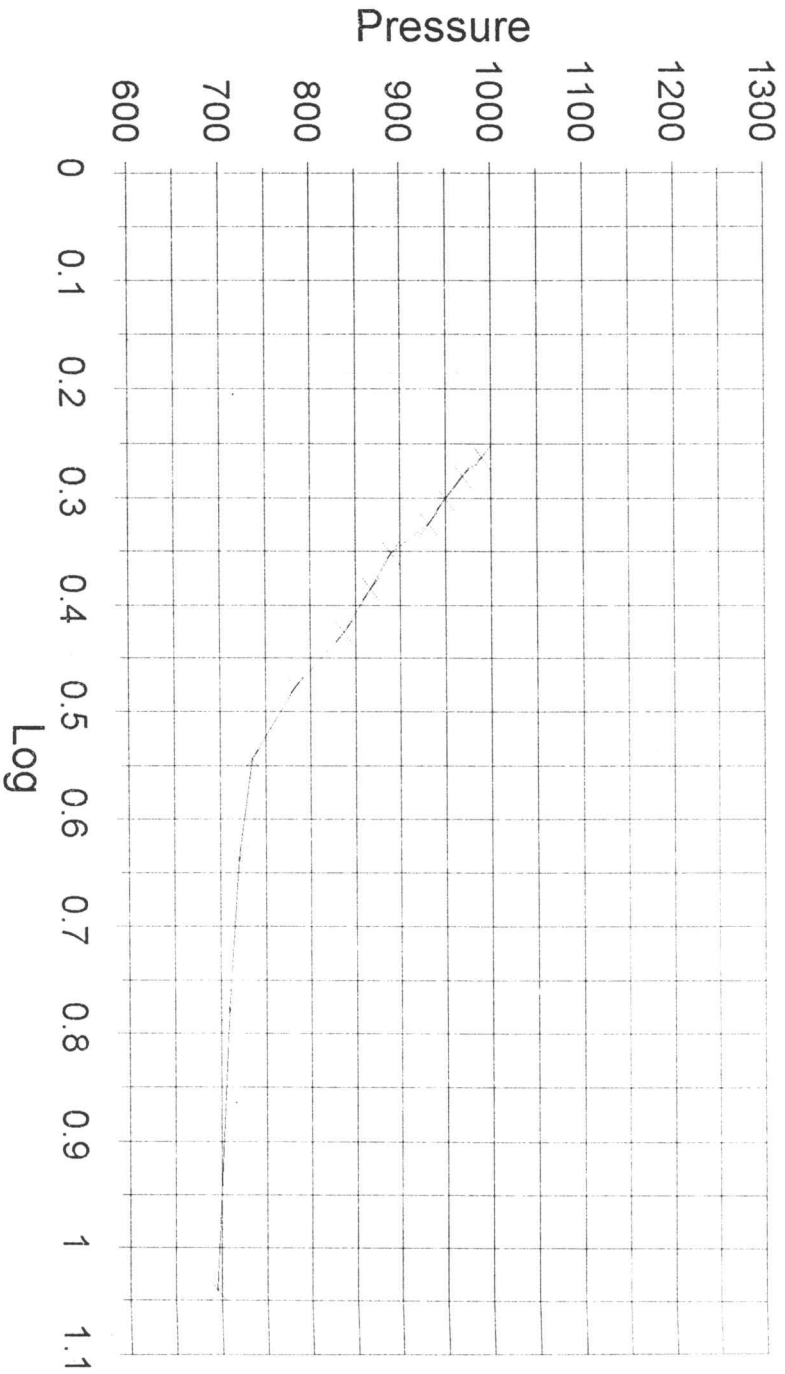
Horner Plot: Shut-in #2

P* 1055.86 Slope 469.185



Horner Plot: Shut-in #1

P * 1138.20 Slope 704.739



Horner Plot: Shut-in #2

P* 1094.74 Slope 550.504

