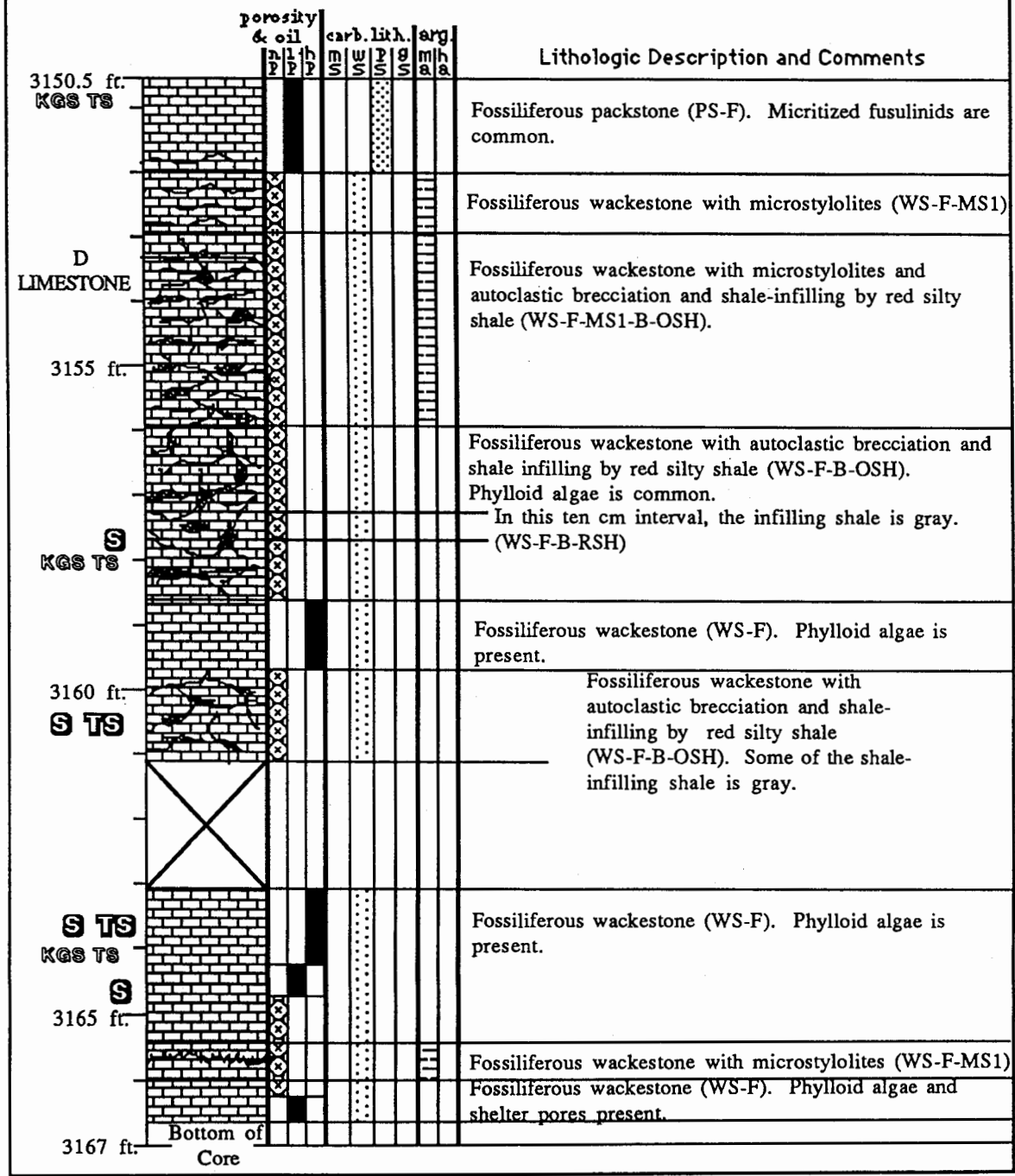


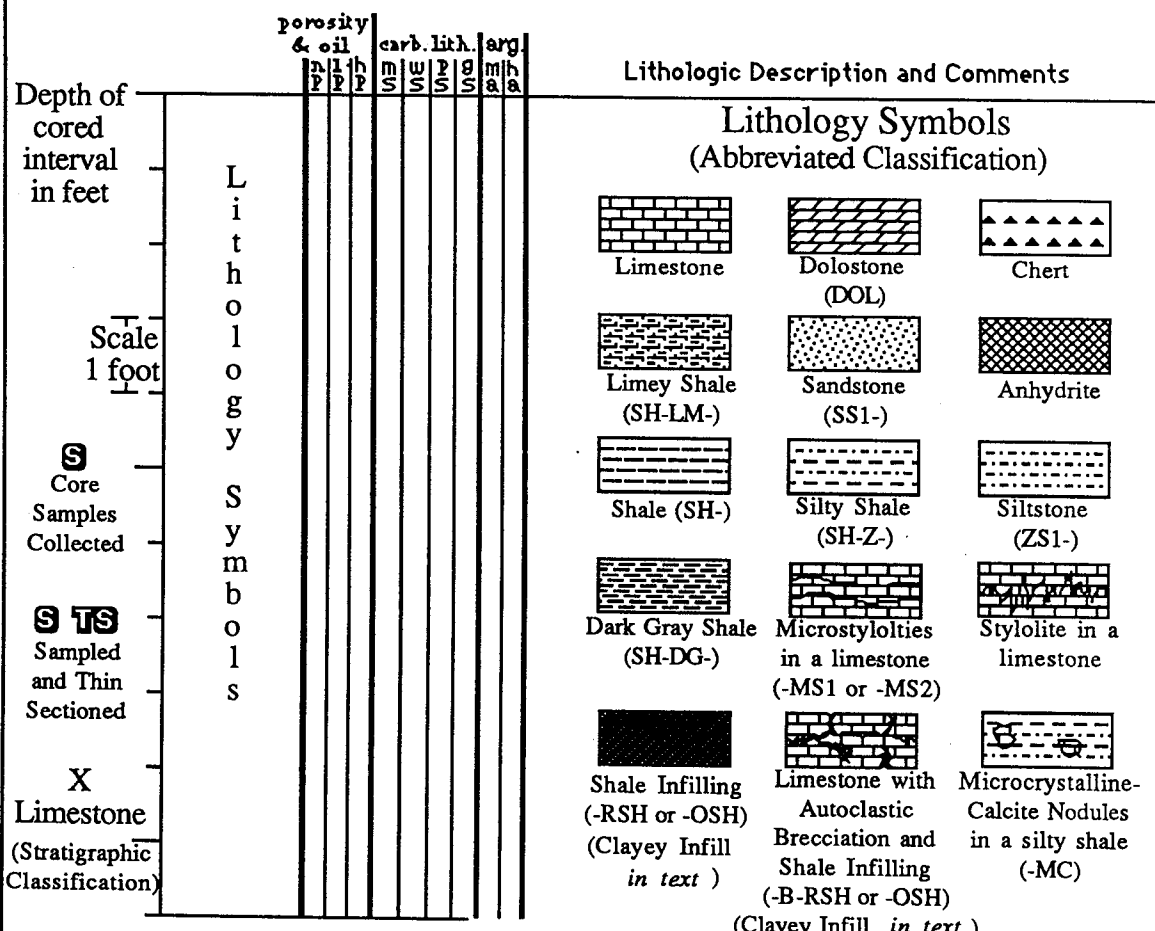
JOHN O. FARMER #2 NICHOLSON

Location: SW SE, Sec. ¹¹ 12-R1N -T27W, Red Willow Co., Nebraska.

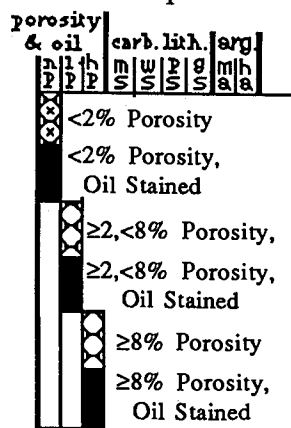
(KGS-per core)



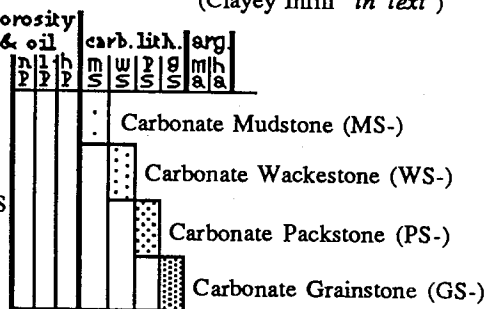
12-2-1-21



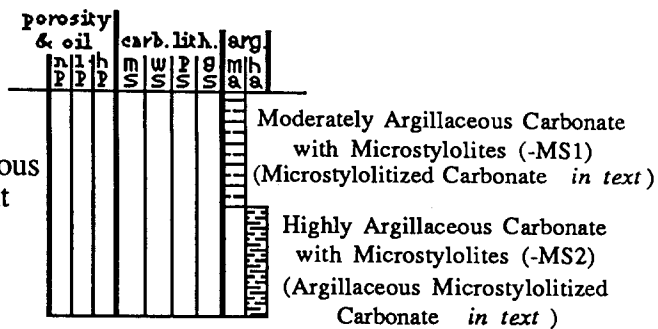
Porosity ranges based on visual estimates during core description



Carbonate Lithologies



Argillaceous Content



porosity & oil			carb. lith.				arg.
p	l	h	m	w	p	g	m
p	p	p	s	s	s	s	a

Lithologic Description and Comments

LITHOLOGY CLASSIFICATION

After the written description of each stratum, the lithology is classified by an abbreviated classification in parenthesis.

Carbonate Lithologies

- (MS-) Carbonate Mudstone
- (PS-) Carbonate Packstone
- (WS-) Carbonate Wackestone
- (GS-) Carbonate Grainstone
- (DOL-) Dolostone
- (LM-SH-) Limey Shale (Highly argillaceous microstylolitized carbonate *in text*)

Modifiers to Carbonate Lithologies

- (-F) Fossiliferous
 - (-P) Peloidal
 - (-LM) Laminated
 - (-O) Oolitic
 - (-ONC) Oncolitic
 - (-FR) Fractured
 - (-MS1) Microstylolites (less argillaceous) (microstylolitized carbonate *in text*)
 - (-MS2) Microstylolites (more argillaceous) (argillaceous microstylolitized carbonate *in text*)
 - (-B) Autoclastic Brecciation
 - (-RSH) Infilling by Gray-Colored Shale
 - (-OSH) Infilling by Red-Colored Shale
- } Clayey infill
in text

Shales

(SH-) Shale

Modifiers to Shales

- (-Z) Silty
- (-GG) Gray-Green
- (-F) Fossiliferous
- (-DG) Dark Gray
- (-RB) Red-Brown
- (-BL) Black
- (-MC) Contains Microcrystalline-Calcite Nodules

Other Lithologies

- (SS1-) Very-fine grained Sandstone
- (ZS-) Siltstone