

WELL NAME: Vap #1
COMPANY: Thoroughbred Associates
LOCATION: 8-1S-33W
Rawlins County, Kansas
DATE: 2/5/98

TRILOBITE TESTING L.L.C.

OPERATOR : Thoroughbred Associates
 WELL NAME: Vap #1
 LOCATION : 8-1S-33W CO Rawlins KS
 INTERVAL : 3950.00 To 4046.00 ft

DATE 2-2-98
 KB 3009.00 ft TICKET NO: 11203 DST #1
 GR 3004.00 ft FORMATION: Oread-KC
 TD 4046.00 ft TEST TYPE: CONV

RECORDER DATA

Mins	Field	1	2	3	4	TIME DATA-----
PF 30 Rec.	11058	11058	11057			PF Fr. 1950 to 2020 hr
SI 30 Range(Psi)	4475.0	4475.0	4500.0	0.0	0.0	IS Fr. 2020 to 2050 hr
SF 30 Clock(hrs)	12 HR	12 HR	12 HR			SF Fr. 2050 to 2120 hr
FS 30 Depth(ft)	4043.0	4043.0	3952.0	0.0	0.0	FS Fr. 2120 to 2150 hr

	Field	1	2	3	4	
A. Init Hydro	2199.0	2195.0	0.0	0.0	0.0	T STARTED 1800 hr
B. First Flow	111.0	111.0	0.0	0.0	0.0	T ON BOTM 1945 hr
B1. Final Flow	77.0	91.0	0.0	0.0	0.0	T OPEN 1950 hr
C. In Shut-in	703.0	702.0	0.0	0.0	0.0	T PULLED 2150 hr
D. Init Flow	100.0	102.0	0.0	0.0	0.0	T OUT 1200 hr
E. Final Flow	77.0	92.0	0.0	0.0	0.0	
F. Fl Shut-in	601.0	595.0	0.0	0.0	0.0	TOOL DATA-----
G. Final Hydro	2188.0	2165.0	0.0	0.0	0.0	Tool Wt. 5000.00 lbs
Inside/Outside	0	0				Wt Set On Packer 26000.00 lbs
						Wt Pulled Loose 64000.00 lbs
						Initial Str Wt 58000.00 lbs
						Unseated Str Wt 58000.00 lbs
						Bot Choke 0.75 in
						Hole Size 7.88 in
						D Col. ID 2.50 in
						D. Pipe ID 3.80 in
						D.C. Length 448.00 ft
						D.P. Length 3548.00 ft

RECOVERY

Tot Fluid 20.00 ft of 20.00 ft in DC and 0.00 ft in DP
 20.00 ft of Drilling mud
 0.00 ft of
 0.00 ft of
 0.00 ft of
 0.00 ft of
 0.00 ft of
 0.00 ft of
 0.00 ft of

SALINITY 0.00 P.P.M. A.P.I. Gravity 0.00

BLOW DESCRIPTION

Initial Flow:
 3/4" blow died back 1/2"
 Initial Shut-in:
 No return
 Final Flow:
 Bubble to open tool-no blow
 Final Shut-in:
 No return

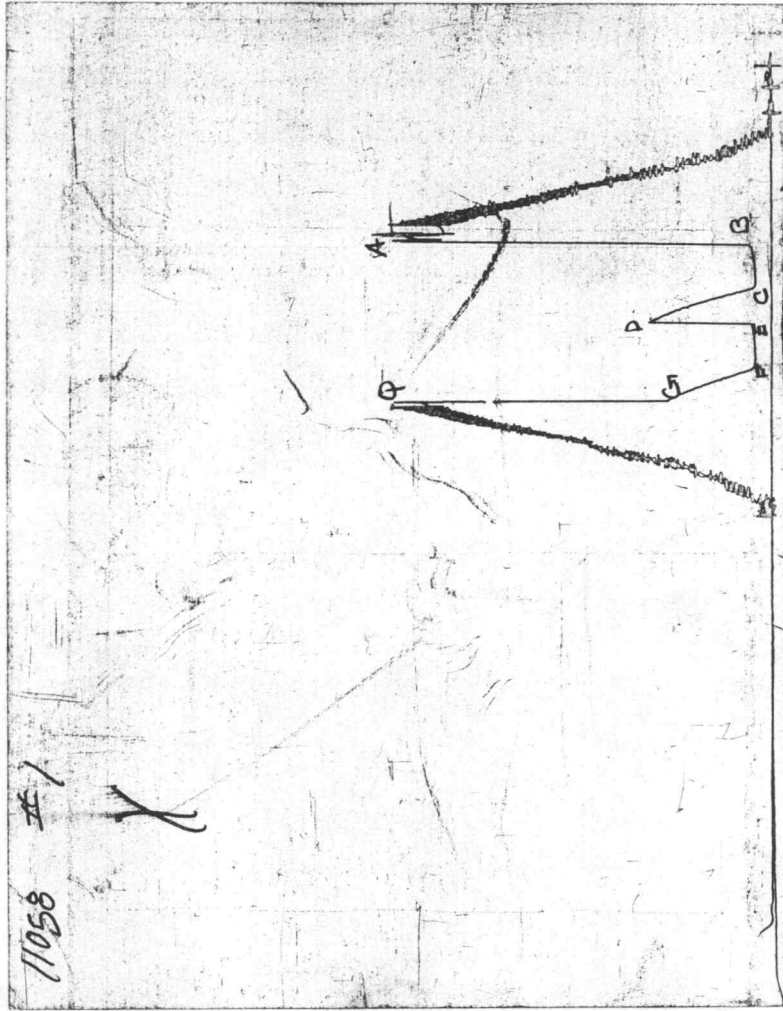
SAMPLES:
 SENT TO:

MUD DATA-----

Mud Type	Chemical
Weight	9.10 lb/c
Vis.	47.00 S/L
W.L.	8.80 in3
F.C.	0.00 in
Mud Drop	
Amt. of fill	0.00 ft
Btm. H. Temp.	114.00 F
Hole Condition	
% Porosity	0.00
Packer Size	6.75 in
No. of Packers	2
Cushion Amt.	0.00
Cushion Type	
Reversed Out	
Tool Chased	
Tester	Shane McBride
Co. Rep.	Steve Davis
Contr.	Murfin
Rig #	3
Unit #	
Pump T.	

Test Successful: Y

CHART PAGE



This is a photocopy of the actual AK-1 recorder chart

TRILOBITE TESTING L.L.C.

OPERATOR : Thoroughbred Associates DATE 2-3-98
 WELL NAME: Vap #1 KB 3009.00 ft TICKET NO: 11204 DST #2
 LOCATION : 8-1S-33W CO Rawlins KS GR 3004.00 ft FORMATION: KC
 INTERVAL : 4045.00 To 4200.00 ft TD 4200.00 ft TEST TYPE: CONV

RECORDER DATA

Mins		Field	1	2	3	4	TIME DATA-----
PF 30	Rec.	11057	11057	11058			PF Fr. 1910 to 1940 hr
SI 45	Range(Psi)	4500.0	4500.0	4475.0	0.0	0.0	IS Fr. 1940 to 2025 hr
SF 45	Clock(hrs)	12 HR	12 HR	12 HR			SF Fr. 2025 to 2110 hr
FS 60	Depth(ft)	4047.0	4047.0	4197.0	0.0	0.0	FS Fr. 2110 to 2210 hr

	Field	1	2	3	4	
A. Init Hydro	2219.0	2236.0	0.0	0.0	0.0	T STARTED 1705 hr
B. First Flow	78.0	105.0	0.0	0.0	0.0	T ON BOTM 1905 hr
B1. Final Flow	78.0	82.0	0.0	0.0	0.0	T OPEN 1910 hr
C. In Shut-in	995.0	985.0	0.0	0.0	0.0	T PULLED 2210 hr
D. Init Flow	89.0	107.0	0.0	0.0	0.0	T OUT 1230 hr
E. Final Flow	89.0	107.0	0.0	0.0	0.0	
F. Fl Shut-in	1006.0	1012.0	0.0	0.0	0.0	TOOL DATA-----
G. Final Hydro	2208.0	2199.0	0.0	0.0	0.0	Tool Wt. 5000.00 lbs
Inside/Outside	0	0	I			Wt Set On Packer 26000.00 lbs
						Wt Pulled Loose 72000.00 lbs
						Initial Str Wt 60000.00 lbs
						Unseated Str Wt 60000.00 lbs
						Bot Choke 0.75 in
						Hole Size 7.88 in
						D Col. ID 2.50 in
						D. Pipe ID 3.80 in
						D.C. Length 448.00 ft
						D.P. Length 3705.00 ft

RECOVERY

Tot Fluid 125.00 ft of 125.00 ft in DC and 0.00 ft in DP
 1.00 ft of Free Oil
 20.00 ft of Slightly oil cut mud 5% oil 95% mud
 104.00 ft of Drilling mud oil specs
 0.00 ft of
 0.00 ft of
 0.00 ft of
 0.00 ft of
 0.00 ft of
 SALINITY 0.00 P.P.M. A.P.I. Gravity 0.00

BLOW DESCRIPTION

Initial Flow:
 1/2" at open bulit to 3 1/4"
 Initial Shut-in:
 No return
 Final Flow:
 Weak surface blow built to 1"
 Final Shut-in:
 No return

SAMPLES:
 SENT TO:

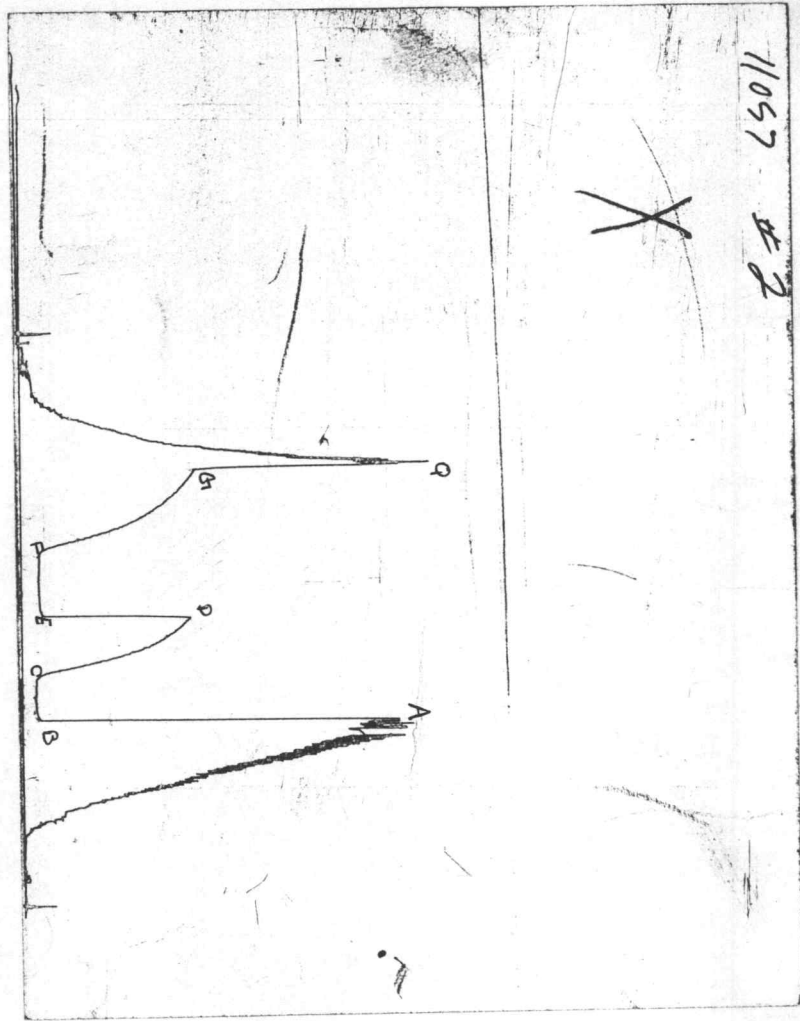
MUD DATA-----
 Mud Type Chemical
 Weight 9.10 lb/c
 Vis. 53.00 S/L
 W.L. 8.60 in3
 F.C. 0.00 in
 Mud Drop
 Amt. of fill 0.00 ft
 Btm. H. Temp. 117.00 F
 Hole Condition
 % Porosity 0.00
 Packer Size 6.75 in
 No. of Packers 2
 Cushion Amt. 0.00
 Cushion Type
 Reversed Out
 Tool Chased
 Tester Shane McBride
 Co. Rep. Steve Davis
 Contr. Murfin
 Rig # 3
 Unit #
 Pump T.

Test Successful: Y

CHART PAGE

11057 #2

X



This is a photocopy of the actual AK-1 recorder chart