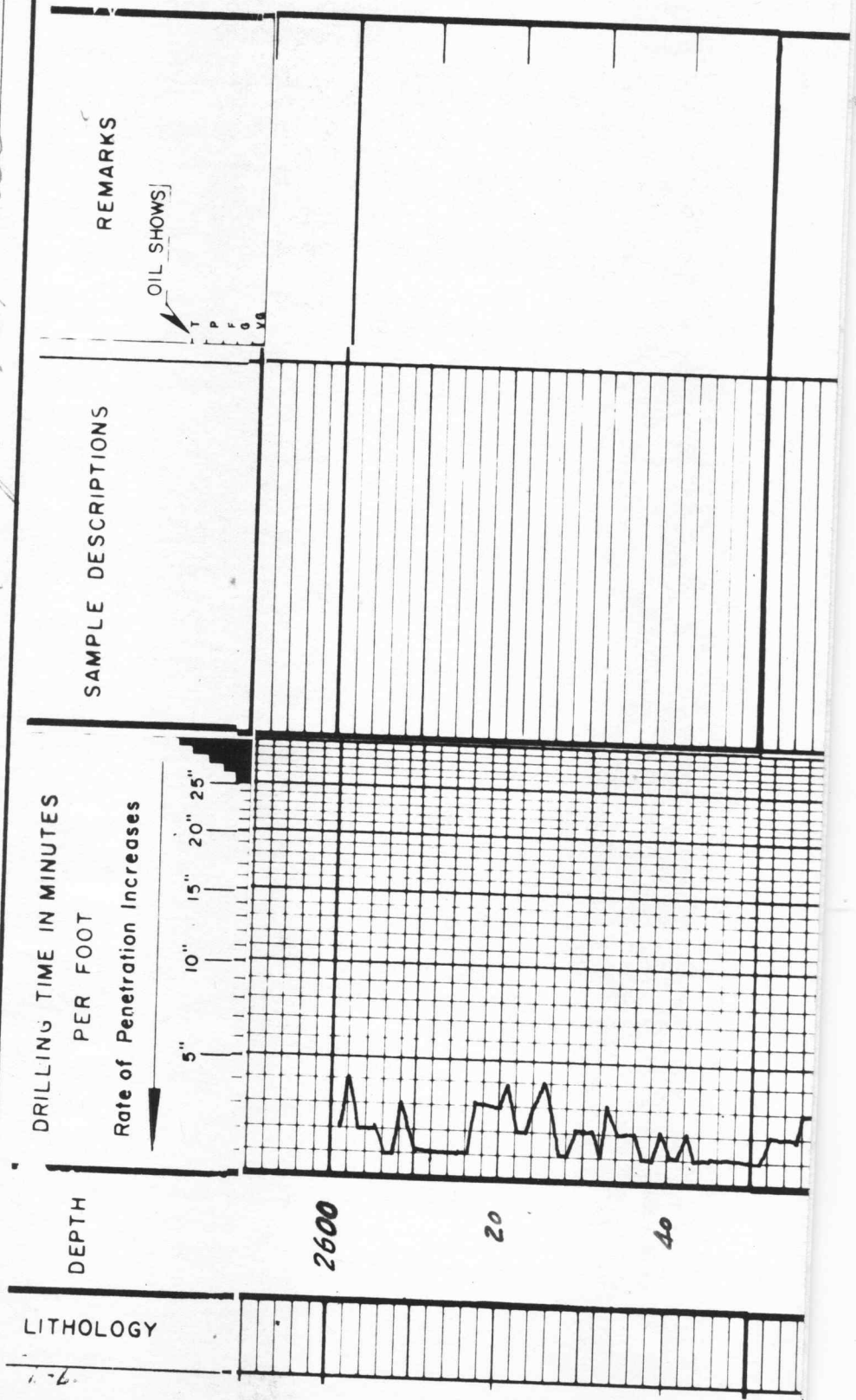


REMARKS:

It was recommended casing be set to test the conglomerate.
PERFORATE & TEST 3282-88

No additional zones were observed.

George P. Spangler



HEEBNER
2689 (-1008)

sh blk carb
ls brn obs

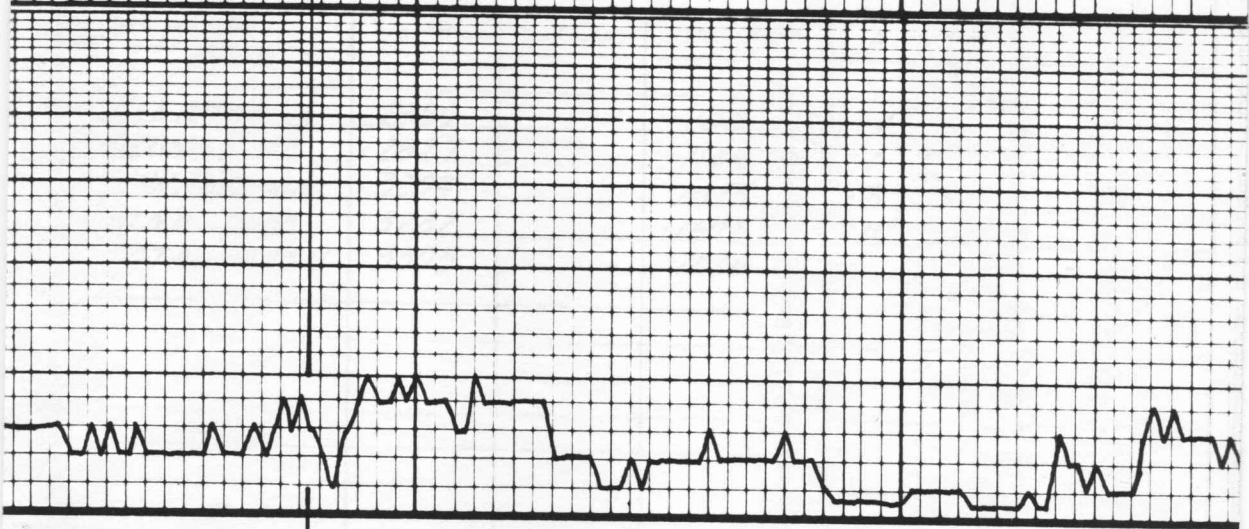
sh gry & grn silty

ls fine to med to - xlnool.
silty NUP

sh gry & sl v. to gry silty
NUP

sh gry to sl v. to mic.
NUP

sh gry & mic silty



40

80

2700

20

40

60

80



DRN. Ls.
2827 (-1146)

Ls brn dsc

Ls tan & gray fa-xlo
s/mb chky

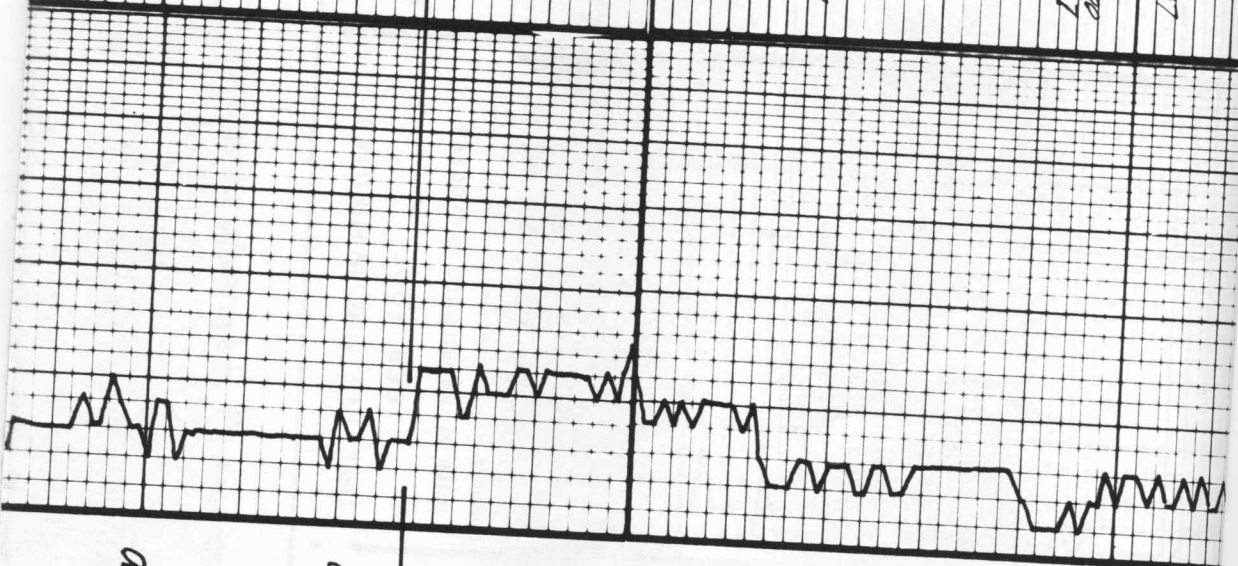
sh gray & red

Ls crm & tan fa-xlo

Ls tan & gray fa-xlo s/mb

Ls tan-brn col. w/ sst 60
caliche & N5

Ls crm & tan gray calcic
compact



2800

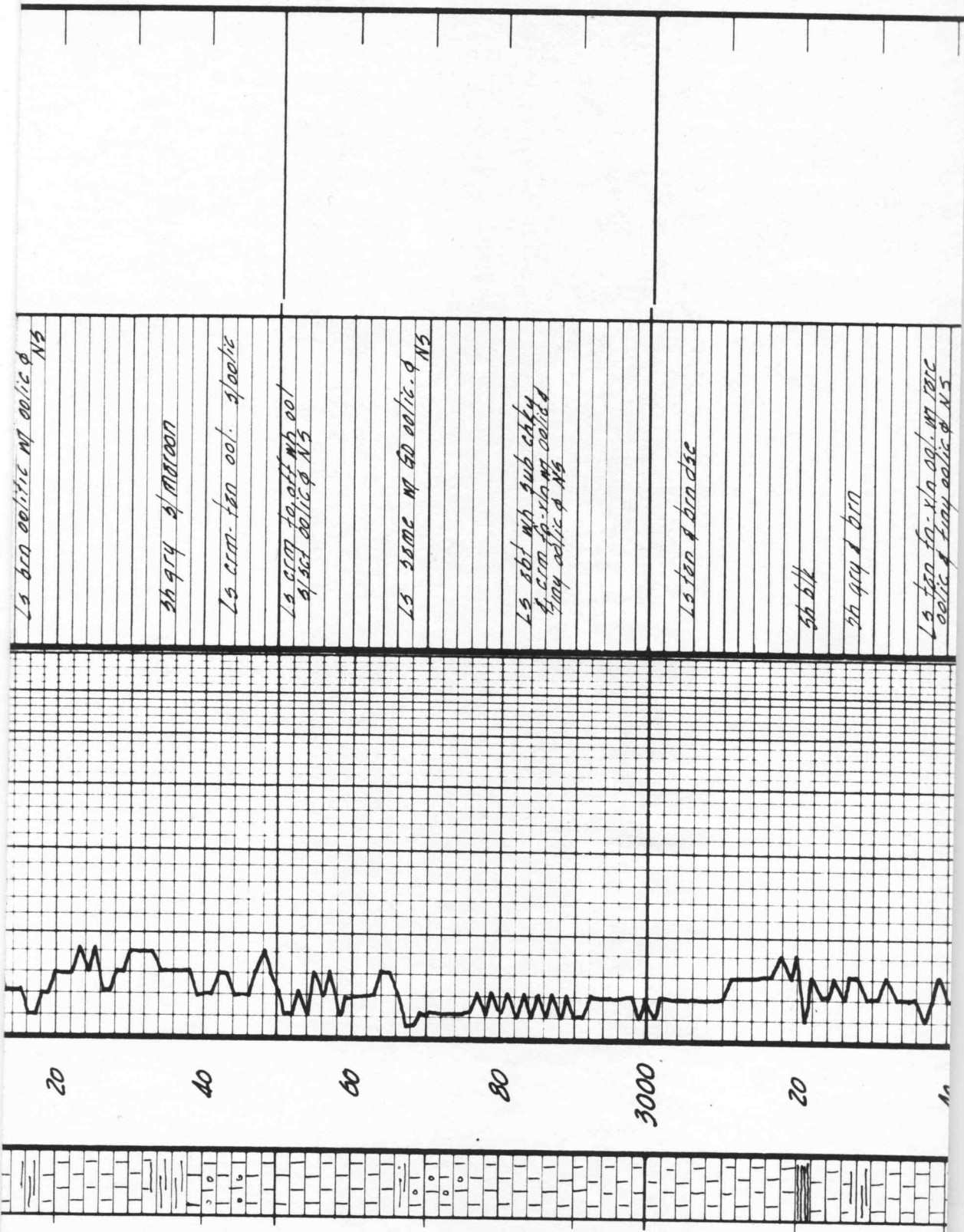
20

40

60

80

2900



ls brn oolitic w/ oolitic ϕ N5

sh grey & maroon

ls crm. tan ool. spoolic

ls crm. tan ool. w/ oolitic ϕ N5

ls same w/ tan oolitic ϕ N5

ls sbt w/ sub chky
 4 crm. tan oolitic ϕ N5
 1/4 in oolitic ϕ N5

ls tan & brn disc

sh blk

sh grey & brn

ls tan to. xia ool. w/ rare
 oolitic & fine oolitic ϕ N5

20

40

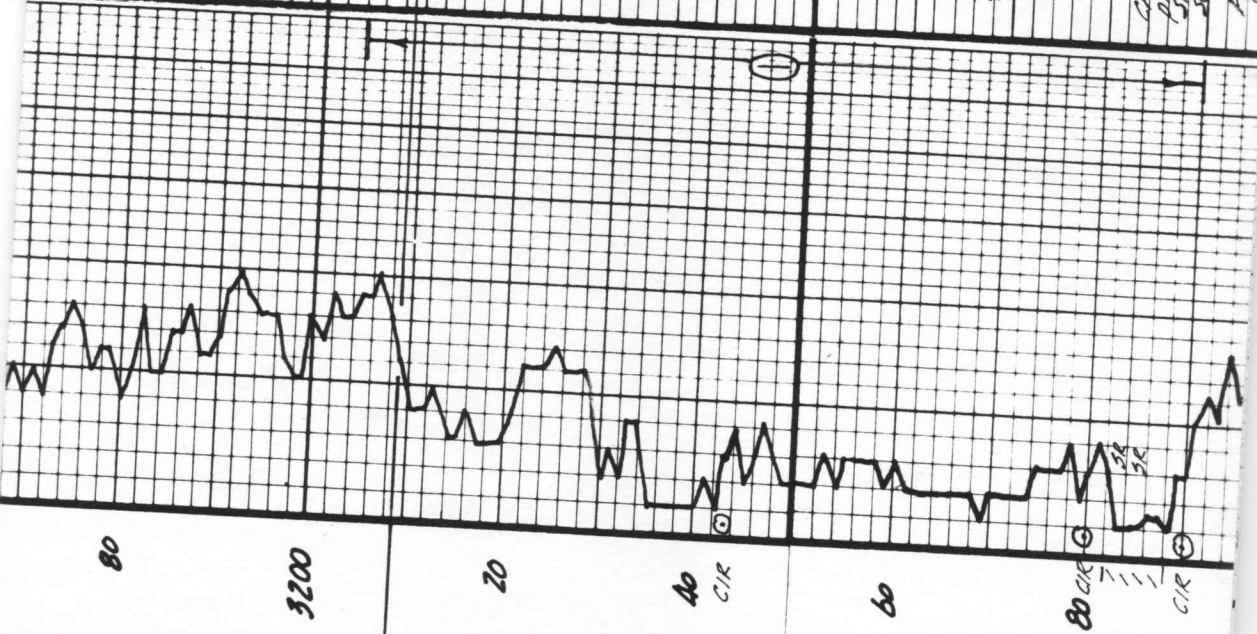
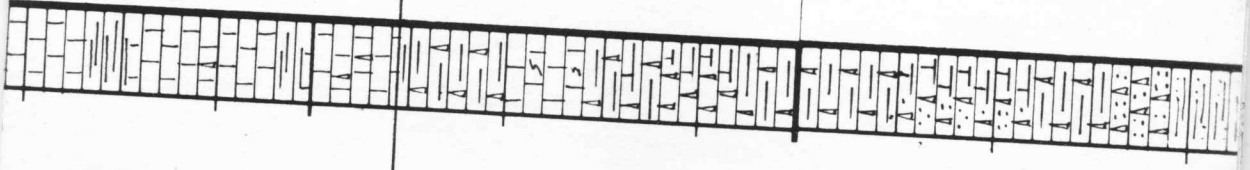
60

80

3000

20

10



sh grey & red
 ls top & grey dsc & chkt
 & bt to 1/2 in de 1/16
 ✓
 sh grey & red
 ls some almag. in apt
 of pure chkt
 sh fgd. & grey
 chkt red & vari. col. dsc
 fresh
 ls top & vari. dsc &
 weathered
 sh vari. col. & red meshy
 chkt vari. col. and red & yell.
 dsc variable dsc chkt
 some of along chkt
 & vari. col. sh. loc.

Canal mix - brick red dsc
 & vari. col. chkt good chkt
 face co. polished & grey pink
 & clear (no clusters) & ls
 various dsc loc. 1/16 to 1/2 in
 sh & face to
 very red meshy sh
 chkt grey blk & tan debilitated
 fine hole to 1/2 in & brn sh. fr. 5/8
 sh & odor some co. face red
 sh dsc, trace to pt. clusters 1/2 in
 Pred red sh & sh stippled
 sh some red & arn sh. sh

PENN BASAL CONG.
3209 (-1528)

1/15 50 Mt. 9.9 NL 10

DST #1 3204-90
 30" 80" 60" 90"
 STRONG BLOW
 GTS 15"
 8.89 MCF - 20"
 13.1 " 25"
 17.8 " 30"
 SECOND OPEN
 30.8 MCF - IMMED.
 47.1 " 10"
 59.0 " 20"
 64.6 " 30"
 69.0 " 40"
 70.3 " 40"

