

15-009-24806

31-20s-12w

### DIAMOND TESTING

P.O. Box 157  
HOISINGTON, KANSAS 67544  
(620) 653-7550 • (800) 542-7313  
STC 21099.D77

Page 1 of 2 Pages

Company L. D. Drilling, Inc. Lease & Well No. Doonan No. 1-31  
 Elevation 1853 GL Formation Chase Effective Pay -- Ft. Ticket No. J1570  
 Date 11-5-04 Sec. 31 Twp. 20S Range 12W County Barton State Kansas  
 Test Approved By Kim B. Shoemaker Diamond Representative John C. Riedl

Formation Test No. 1 Interval Tested from 1,594 ft. to 1,700 ft. Total Depth 1,700 ft.  
 Packer Depth 1,589 ft. Size 6 3/4 in. Packer Depth -- ft. Size -- in.  
 Packer Depth 1,594 ft. Size 6 3/4 in. Packer Depth -- ft. Size -- in.  
 Depth of Selective Zone Set          ft.

Top Recorder Depth (Inside) 1,598 ft. Recorder Number 21099 Cap. 5,000 psi  
 Bottom Recorder Depth (Outside) 1,697 ft. Recorder Number 11073 Cap. 3,900 psi  
 Below Straddle Recorder Depth          ft. Recorder Number          Cap.          psi

Drilling Contractor Sterling Drilling Company - Rig 1 Drill Collar Length 240 ft. I.D. 2 1/4 in.  
 Mud Type Spotted mud on btm. Viscosity -- Weight Pipe Length -- ft. I.D. -- in.  
 Weight -- Water Loss -- cc. Drill Pipe Length 1,332 ft. I.D. 3 1/2 in.  
 Chlorides -- P.P.M. Test Tool Length 20 ft. Tool Size 3 1/2 - IE in.  
 Jars: Make Bowen Serial Number Not Run Anchor Length 108 ft. Size 4 1/2 - FH in.  
 Did Well Flow? No Reversed Out No Surface Choke Size 1 in. Bottom Choke Size 5/8 in.  
 Main Hole Size 7 7/8 in. Tool Joint Size 4 1/2 - XH in.

Blow: 1st Open: Strong blow. Off bottom of bucket in 10 mins. No blow back during shut-in.  
 2nd Open: Good, 6 in., blow. Decreasing to 3 ins. by end.

Recovered 200 ft. of very slightly water cut mud = .984000 bbls. (Grind out: 2%-water; 98%-mud) Chlorides: 38,000 Ppm  
 Recovered          ft. of           
 Recovered          ft. of           
 Recovered          ft. of           
 Recovered          ft. of         

Remarks         

Time Set Packer(s) 10:15 A.M. Time Started Off Bottom 1:15 XXM. Maximum Temperature 77°  
XXXI. P.M.  
 Initial Hydrostatic Pressure ..... (A) 823 P.S.I.  
 Initial Flow Period ..... Minutes 30 (B) 42 P.S.I. to (C) 705 P.S.I.  
 Initial Closed In Period ..... Minutes 45 (D) 405 P.S.I.  
 Final Flow Period ..... Minutes 45 (E) 96 P.S.I. to (F) 147 P.S.I.  
 Final Closed In Period ..... Minutes 60 (G) 438 P.S.I.  
 Final Hydrostatic Pressure ..... (H) 754 P.S.I.

## GENERAL INFORMATION

### Client Information:

Company: L D DRILLING INC

Contact: L D DAVIS

Phone: Fax: e-mail:

### Site Information:

Contact: KIM SHOEMAKER

Phone: Fax: e-mail:

### Well Information:

Name: DOONAN #1-31

Operator: L D DRILLING INC

Location-Downhole: DST 1 1594-1700

Location-Surface: S31/20S12W BARTON COUNTY

### Test Information:

Company: DIAMOND TESTING

Representative: JOHN RIEDL

Supervisor: KIM SHOEMAKER

Test Type: CONVENTIONAL Job Number: D77

Test Unit: 2

Start Date: 2004/11/05 Start Time: 09:16:00

End Date: 2004/11/05 End Time: 14:46:00

Report Date: 2004/11/05 Prepared By: JOHN RIEDL

Qualified By: KIM SHOEMAKER

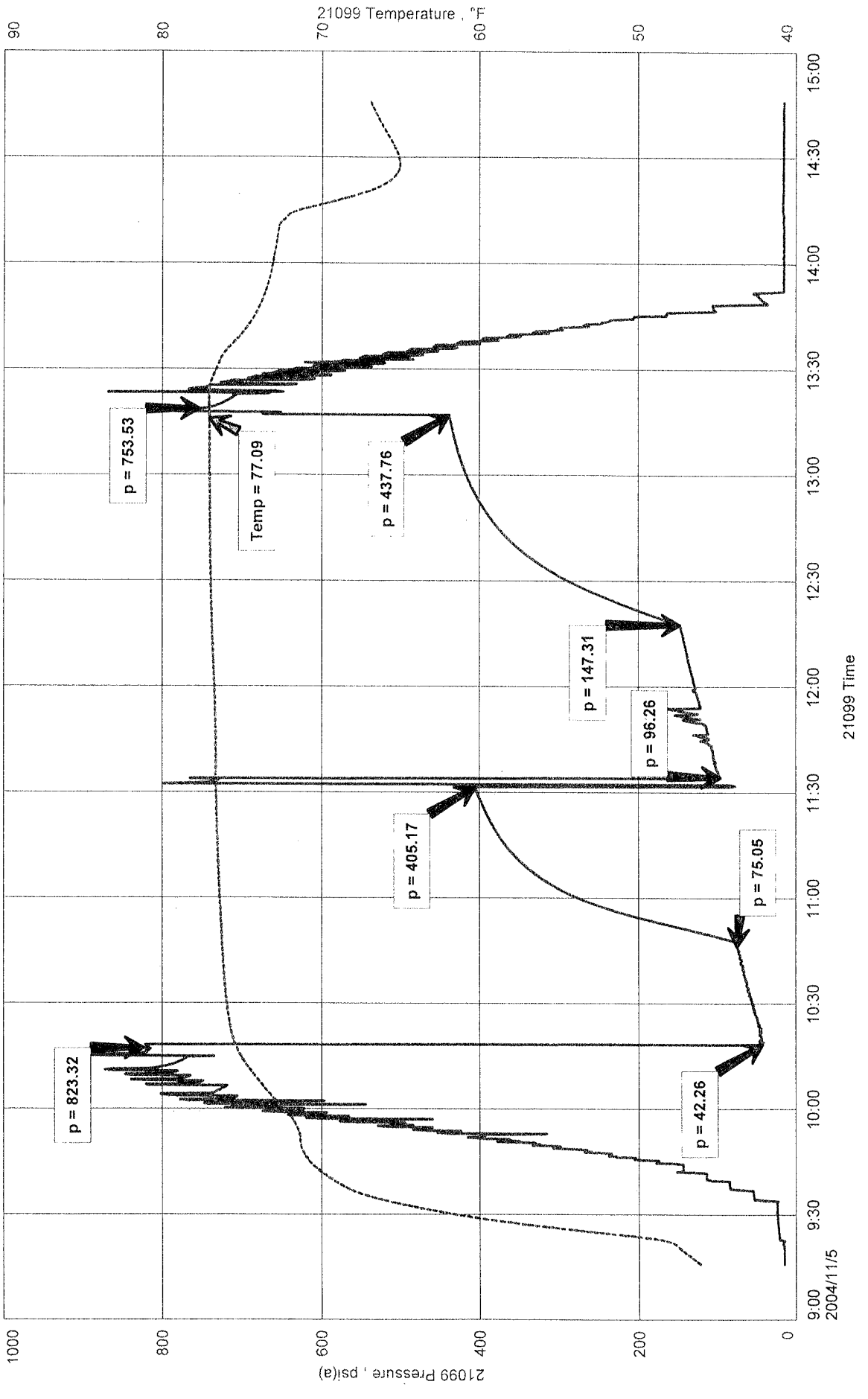
### Remarks:

REC. 200' VSLWCM [2%MUD 98%WATER] ALL IN DRILL COLLARS

DOONAN #1-31  
Formation: CHASE  
Job Number: D77

L D DRILLING INC  
DST 1 1594-1700  
Start Test Date: 2004/11/05  
Final Test Date: 2004/11/05

# DOONAN #1-31



BOONAN #1-31

DST #1

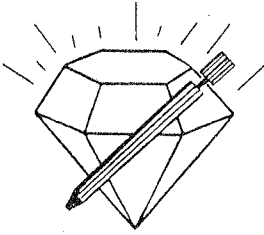
WELL # 11072 OUTFLOW

LOC 1687



This is an actual photograph of recorder chart.

POINT	PRESSURE		PSI
	Field Reading	Elec. Office Reading	
(A) Initial Hydrostatic Mud .....	823	823	PSI
(B) First Initial Flow Pressure.....	42	42	PSI
(C) First Final Flow Pressure .....	705	705	PSI
(D) Initial Closed-in Pressure .....	405	405	PSI
(E) Second Initial Flow Pressure .....	96	96	PSI
(F) Second Final Flow Pressure.....	147	147	PSI
(G) Final Closed-in Pressure.....	438	438	PSI
(H) Final Hydrostatic Mud.....	754	754	PSI



# DIAMOND TESTING

P.O. Box 157  
HOISINGTON, KANSAS 67544  
(620) 653-7550 • (800) 542-7313  
STC 21099.D78

Company L. D. Drilling, Inc. Lease & Well No. Doonan No. 1-31

Elevation 1853 GL Formation Lansing/Kansas City "A" - "F" Effective Pay -- Ft. Ticket No. J1571

Date 11-8-04 Sec. 31 Twp. 20S Range 12W County Barton State Kansas

Test Approved By Kim B. Shoemaker Diamond Representative John C. Riedl

Formation Test No. 2 Interval Tested from 3,212 ft. to 3,303 ft. Total Depth 3,303 ft.

Packer Depth 3,207 ft. Size 6 3/4 in. Packer Depth -- ft. Size -- in.

Packer Depth 3,212 ft. Size 6 3/4 in. Packer Depth -- ft. Size -- in.

Depth of Selective Zone Set          ft.

Top Recorder Depth (Inside) 3,216 ft. Recorder Number 21099 Cap. 5,000 psi

Bottom Recorder Depth (Outside) 3,300 ft. Recorder Number 11073 Cap. 3,900 psi

Below Straddle Recorder Depth          ft. Recorder Number          Cap.          psi

Drilling Contractor Sterling Drilling Company - Rig 1 Drill Collar Length 240 ft. I.D. 2 1/4 in.

Mud Type Chemical Viscosity 48 Weight Pipe Length -- ft. I.D. -- in.

Weight 9.0 Water Loss 8.0 cc. Drill Pipe Length 2,952 ft. I.D. 3 1/2 in.

Chlorides 3,000 P.P.M. Test Tool Length 20 ft. Tool Size 3 1/2 - IF in.

Jars: Make Bowen Serial Number Not Run Anchor Length 91 ft. Size 4 1/2 - FH in.

Did Well Flow? No Reversed Out Yes Surface Choke Size 1 in. Bottom Choke Size 5/8 in.

Main Hole Size 7 7/8 in. Tool Joint Size 4 1/2 - XH in.

Blow: 1st Open: Strong blow. Off bottom of bucket immediately. Gas to surface in 5 mins. Strong blow back during shut-in.  
2nd Open: Strong blow. Off bottom of bucket in 1 min. Gas to surface throughout. Strong blow back during shut-in.  
(SEE GAS VOLUME REPORT.)

Recovered 2,800 ft. of clean gassy oil = 38.646400 bbls. (Grind out: 20%-gas; 80%-oil) Gravity: 32 @ 60°

Recovered 120 ft. of slightly mud cut gassy oil = .590400 bbls. (Grind out: 10%-mud; 20%-gas; 70%-oil)

Recovered 2,920 ft. of TOTAL FLUID = 39.236800 bbls.

Recovered          ft. of         

Recovered          ft. of         

Remarks Tool Sample Grind Out: 5%-mud; 5%-gas; 90%-oil

Time Set Packer(s) 7:50 ~~XXX~~ A.M. Time Started Off Bottom 10:50 ~~XXX~~ A.M. Maximum Temperature 106°

Initial Hydrostatic Pressure ..... (A) 1512 P.S.I.

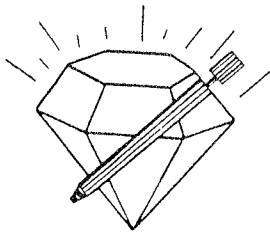
Initial Flow Period ..... Minutes 30 (B) 539 P.S.I. to (C) 869 P.S.I.

Initial Closed In Period ..... Minutes 45 (D) 916 P.S.I.

Final Flow Period ..... Minutes 45 (E) 876 P.S.I. to (F) 918 P.S.I.

Final Closed In Period ..... Minutes 60 (G) 921 P.S.I.

Final Hydrostatic Pressure ..... (H) 1501 P.S.I.



**DIAMOND TESTING**  
P.O. Box 157  
**HOISINGTON, KANSAS 67544**  
(620) 653-7550 • (800) 542-7313

**FLUID SAMPLE DATA**

Company L. D. Drilling, Inc.  
Lease & Well No. Doonan No. 1-31  
Date 11-8-04 Sec. 31 Twp. 20 S Range 12 W  
Formation Test No. 2 Interval Tested From 3,212 ft. to 3,303 ft. Total Depth 3,303 ft.  
Formation Lansing/Kansas City "A" - "F"

	<u>MUD PIT</u>	<u>RECOVERY</u>
Viscosity	<u>48</u> CP	<u>--</u> CP
Weight	<u>9.0</u>	<u>--</u>
Water Loss	<u>8.0</u> CC	<u>--</u> CC
PH Factor	<u>11.0</u>	<u>--</u>

	<u>RESISTIVITY</u>	<u>CHLORIDE CONTENT</u>
Recovery Water	<u>-- @ -- °F.</u>	<u>--</u> ppm
Recovery Mud	<u>-- @ -- °F.</u>	<u>--</u> ppm
Recovery Mud Filtrate	<u>-- @ -- °F.</u>	<u>--</u> ppm
Mud Pit Sample	<u>2.40 @ 60 °F.</u>	<u>3,000</u> ppm
Mud Pit Sample Filtrate	<u>2.40 @ 62 °F.</u>	<u>2,800</u> ppm

Sample Taken By JOHN C. RIEDL

Witness By KIM B. SHOEMAKER

Remarks Pit filtrate triton dish chlorides were 3,000 Ppm



## GENERAL INFORMATION

### Client Information:

Company: L D DRILLING INC

Contact: L D DAVIS

Phone: Fax: e-mail:

### Site Information:

Contact: KIM SHOEMAKER

Phone: Fax: e-mail:

### Well Information:

Name: DOONAN #1-31

Operator: L D DRILLIUNG INC

Location-Downhole: DST 2 3212-3303

Location-Surface: S31/20S/12W BARTON COUNTY

### Test Information:

Company: DIAMOND TESTING

Representative: JOHN RIEDL

Supervisor: KIM SHOEMAKER

Test Type: CONVENTIONAL Job Number: D78

Test Unit: 2

Start Date: 2004/11/08 Start Time: 06:17:00

End Date: 2004/11/08 End Time: 16:22:40

Report Date: 2004/11/08 Prepared By: JOHN RIEDL

Qualified By: KIM SHOEMAKER

REC. 2800' CGO 120' SLOGGM TOTAO FLUID REC. 2920' OIL GRAVITY 32@60  
GTS 5MIN FIRST FLOW [SEE GAS VOLUME REPORT FOR READINGS]

L D DRILLING INC

DST 2 3212-3303

Start Test Date: 2004/11/08

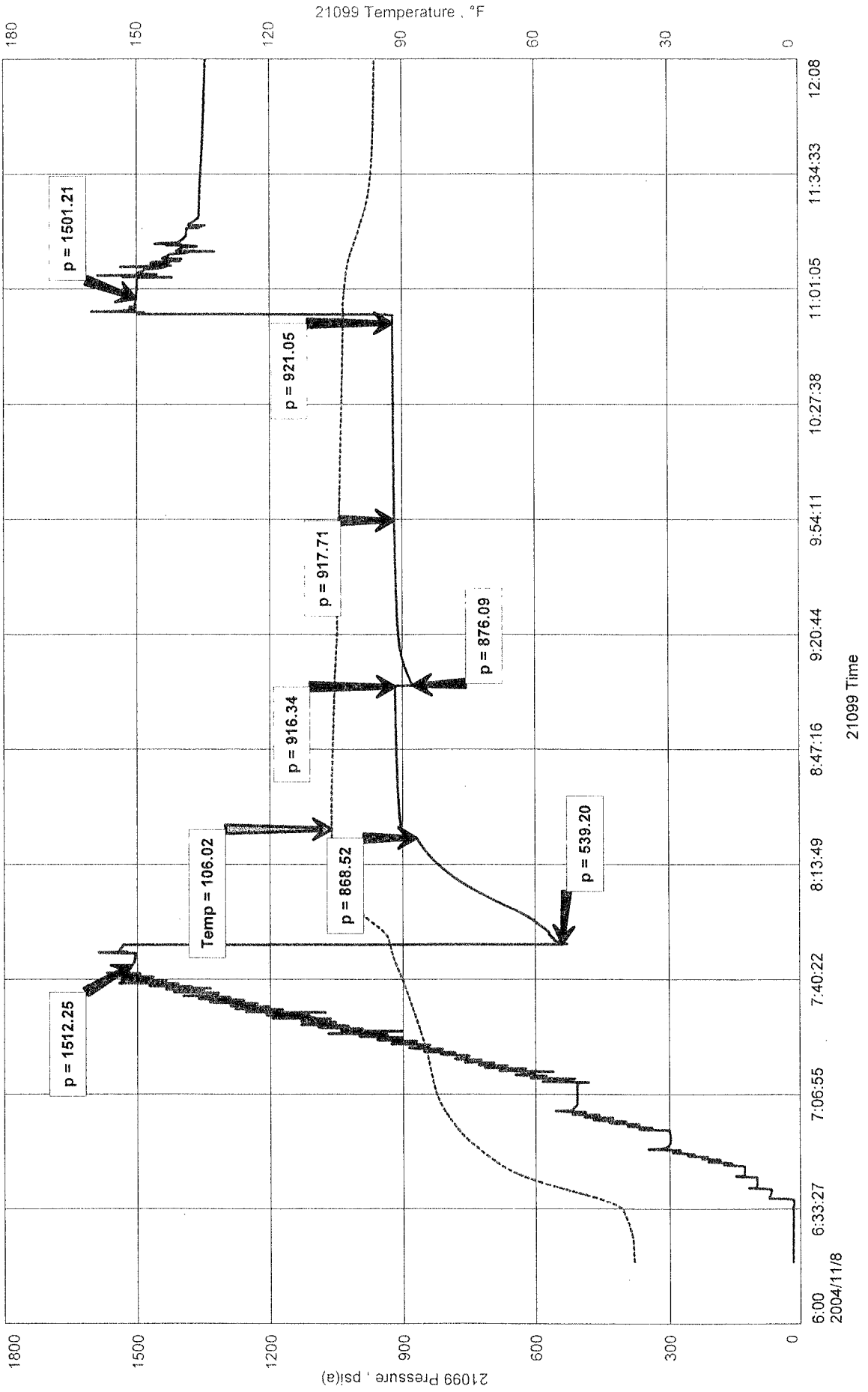
Final Test Date: 2004/11/08

DOONAN #1-31

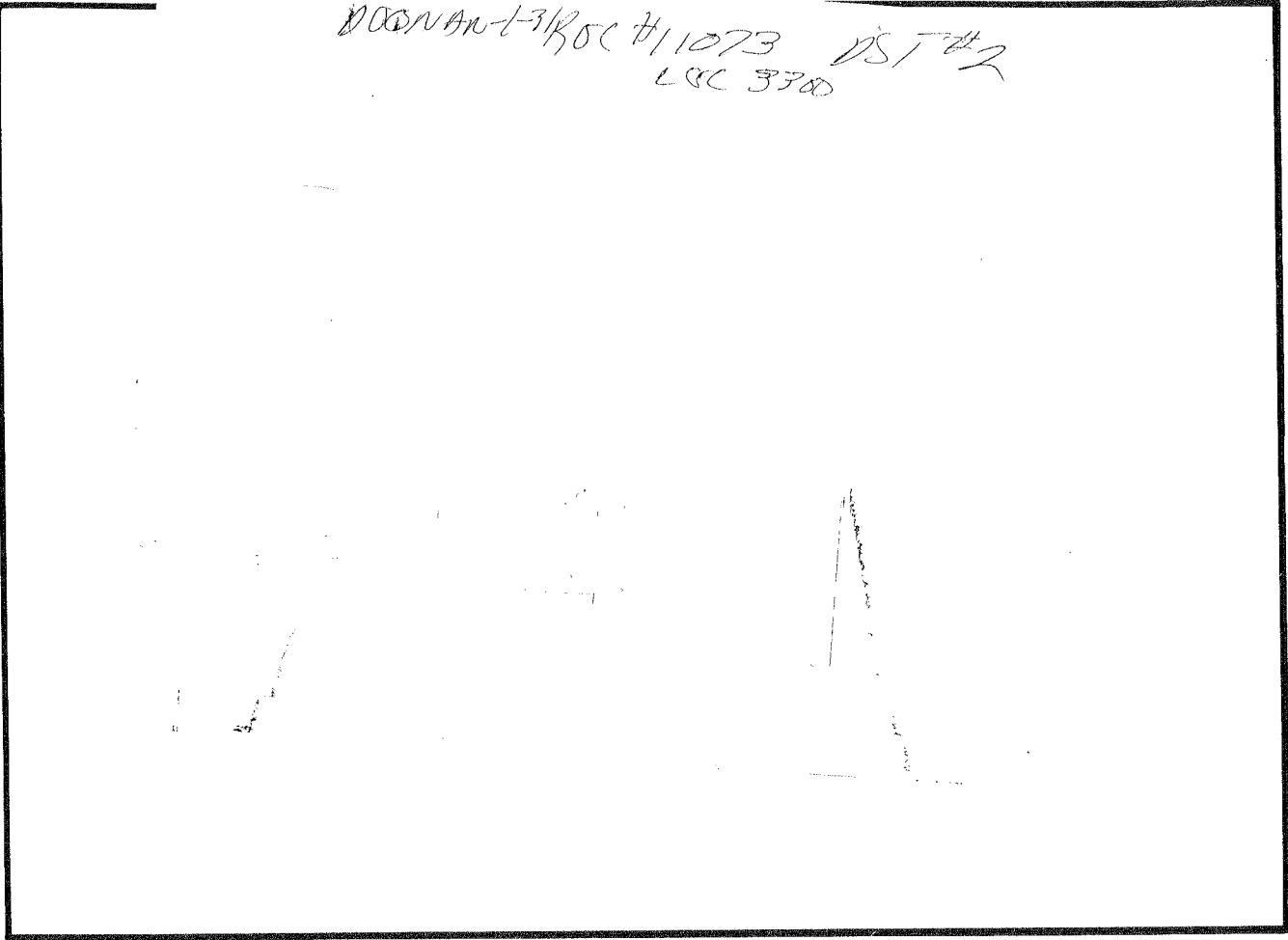
Formation: LKC A/F

Job Number: D78

# DOONAN #1-31

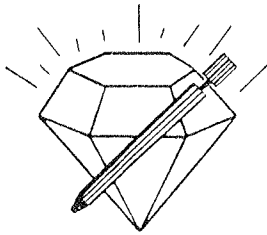


DOONAN-3125C #11073 DST #2  
 LRC 370



This is an actual photograph of recorder chart.

POINT	PRESSURE		PSI
	Field Reading	Elec. Office Reading	
(A) Initial Hydrostatic Mud .....	1512	1512	PSI
(B) First Initial Flow Pressure.....	539	539	PSI
(C) First Final Flow Pressure .....	869	869	PSI
(D) Initial Closed-in Pressure .....	916	916	PSI
(E) Second Initial Flow Pressure .....	876	876	PSI
(F) Second Final Flow Pressure.....	918	918	PSI
(G) Final Closed-in Pressure.....	921	921	PSI
(H) Final Hydrostatic Mud .....	1501	1501	PSI



DIAMOND TESTING

P.O. Box 157
HOISINGTON, KANSAS 67544
(620) 653-7550 • (800) 542-7313
STC 21099.D79

Company L. D. Drilling, Inc. Lease & Well No. Doonan No. 1-31

Elevation 1853 GL Formation Lansing/Kansas City "H"- "I" Effective Pay -- Ft. Ticket No. J1572

Date 11-9-04 Sec. 31 Twp. 20S Range 12W County Barton State Kansas

Test Approved By Kim B. Shoemaker Diamond Representative John C. Riedl

Formation Test No. 3 Interval Tested from 3,341 ft. to 3,373 ft. Total Depth 3,373 ft.

Packer Depth 3,336 ft. Size 6 3/4 in. Packer Depth -- ft. Size -- in.

Packer Depth 3,341 ft. Size 6 3/4 in. Packer Depth -- ft. Size -- in.

Depth of Selective Zone Set -- ft.

Top Recorder Depth (Inside) 3,346 ft. Recorder Number 21099 Cap. 5,000 psi

Bottom Recorder Depth (Outside) 3,370 ft. Recorder Number 11073 Cap. 3,900 psi

Below Straddle Recorder Depth -- ft. Recorder Number -- Cap. -- psi

Drilling Contractor Sterling Drilling Company - Rig 1 Drill Collar Length 240 ft. I.D. 2 1/4 in.

Mud Type Chemical Viscosity 54 Weight Pipe Length -- ft. I.D. -- in.

Weight 9.0 Water Loss 8.0 cc. Drill Pipe Length 3,081 ft. I.D. 3 1/2 in.

Chlorides 4,000 P.P.M. Test Tool Length 20 ft. Tool Size 3 1/2 - IF in.

Jars: Make Bowen Serial Number Not Run Anchor Length 32 ft. Size 4 1/2 - FH in.

Did Well Flow? No Reversed Out Yes Surface Choke Size 1 in. Bottom Choke Size 5/8 in.

Main Hole Size 7 7/8 in. Tool Joint Size 4 1/2 - XH in.

Blow: 1st Open: Strong blow. Off bottom of bucket in 1 min. Gas to surface in 6 mins. Strong blow back during shut-in.
2nd Open: Strong blow. Off bottom of bucket in 1 min. Gas to surface throughout. Strong blow back during shut-in.

Recovered 1,300 ft. of clean gassy oil = 17.346400 bbls. (Grind out: 10%-gas; 90%-oil) Gravity: 35 @ 60°

Recovered 120 ft. of slightly mud cut gassy oil = .590400 bbls. (Grind out: 10%-mud; 20%-gas; 70%-oil)

Recovered 1,420 ft. of TOTAL FLUID = 17.936800 bbls.

Recovered -- ft. of --

Recovered -- ft. of --

Remarks Tool Sample Grind Out: 10%-gas; 90%-oil

Time Set Packer(s) 3:30 A.M. Time Started Off Bottom 6:30 A.M. Maximum Temperature 107°

Initial Hydrostatic Pressure (A) 1557 P.S.I.

Initial Flow Period Minutes 30 (B) 83 P.S.I. to (C) 224 P.S.I.

Initial Closed In Period Minutes 45 (D) 956 P.S.I.

Final Flow Period Minutes 45 (E) 260 P.S.I. to (F) 397 P.S.I.

Final Closed In Period Minutes 60 (G) 941 P.S.I.

Final Hydrostatic Pressure (H) 1547 P.S.I.



## GENERAL INFORMATION

### Client Information:

Company: L D DRILLING INC

Contact: L D DAVIS

Phone: Fax: e-mail:

### Site Information:

Contact: KIM SHOEMAKER

Phone: Fax: e-mail:

### Well Information:

Name: DOONAN #1-31

Operator: L D DRILLING INC

Location-Downhole: DST 3 3341-3373

Location-Surface: S31/20S/12W BARTON COUNTY

### Test Information:

Company: DIAMOND TESTING

Representative: JOHN RIEDL

Supervisor: KIM SHOEMAKER

Test Type: CONVENTIONAL Job Number: D79

Test Unit: 2

Start Date: 2004/11/09 Start Time: 02:03:00

End Date: 2004/11/09 End Time: 11:33:40

Report Date: 2004/11/09 Prepared By: JOHN RIEDL

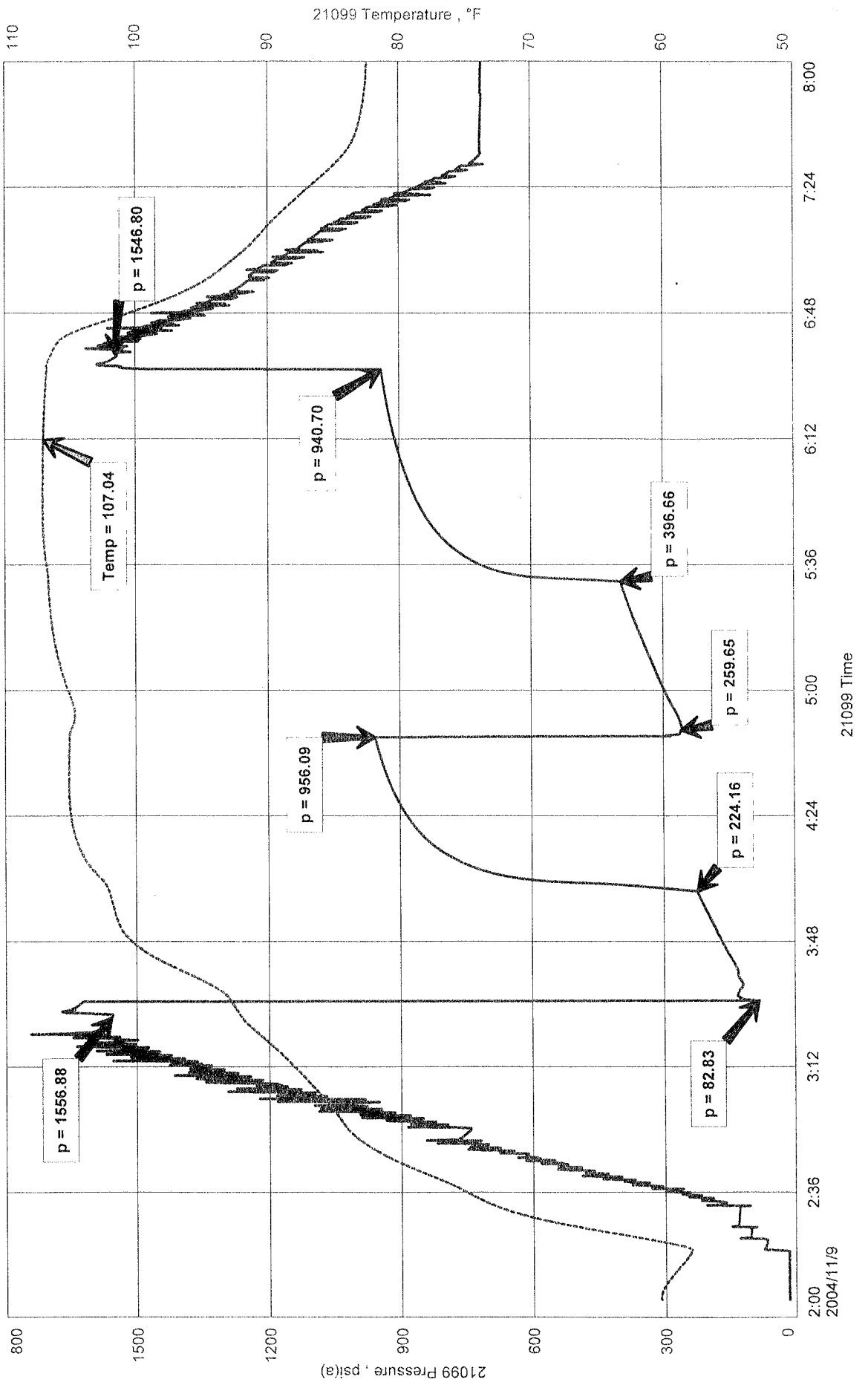
Qualified By: KIM SHOEMAKER

**Remarks:**  
REC. 1300' CGO [10%GAS 90%OIL] 35 GRAVITY  
120' SLMCGO [10%MUD.20%GAS 70%OIL] TOTAL FLUID REC 1420'  
GTS 6 MINUTES 1ST FLOW [SEE GAS VOLUME REPORT]

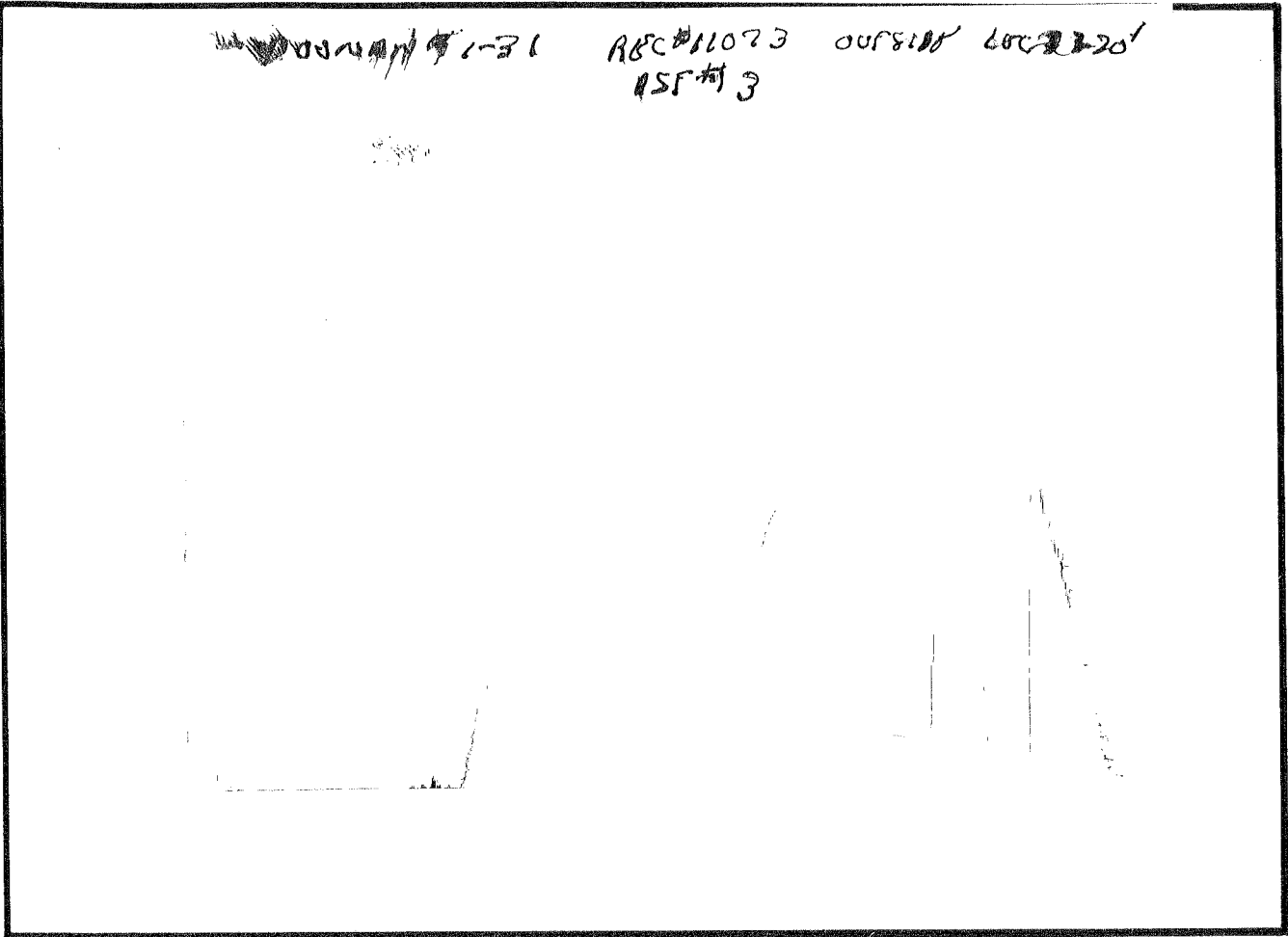
DOONAN #1-31  
Formation: LKC H/I  
Job Number: D79

L D DRILLING INC  
DST 3 3341-3373  
Start Test Date: 2004/11/09  
Final Test Date: 2004/11/09

# DOONAN #1-31

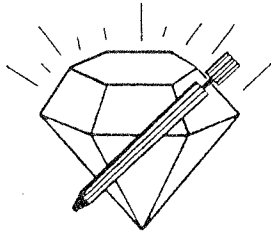


REC#11073 00810' 602220'  
 15F#3



This is an actual photograph of recorder chart.

POINT	PRESSURE		PSI
	Field Reading	Elec. Office Reading	
(A) Initial Hydrostatic Mud	1557	1557	PSI
(B) First Initial Flow Pressure	83	83	PSI
(C) First Final Flow Pressure	224	224	PSI
(D) Initial Closed-in Pressure	956	956	PSI
(E) Second Initial Flow Pressure	260	260	PSI
(F) Second Final Flow Pressure	397	397	PSI
(G) Final Closed-in Pressure	941	941	PSI
(H) Final Hydrostatic Mud	1547	1547	PSI



# DIAMOND TESTING

P.O. Box 157  
HOISINGTON, KANSAS 67544  
(620) 653-7550 • (800) 542-7313  
STC 21099.D80

Company L. D. Drilling, Inc. Lease & Well No. Doonan No. 1-31

Elevation 1853 GL Formation Lansing/Kansas City "J" Effective Pay -- Ft. Ticket No. J1573

Date 11-9-04 Sec. 31 Twp. 20S Range 12W County Barton State Kansas

Test Approved By Kim B. Shoemaker Diamond Representative John C. Riedl

Formation Test No. 4 Interval Tested from 3,372 ft. to 3,400 ft. Total Depth 3,400 ft.

Packer Depth 3,367 ft. Size 6 3/4 in. Packer Depth -- ft. Size -- in.

Packer Depth 3,372 ft. Size 6 3/4 in. Packer Depth -- ft. Size -- in.

Depth of Selective Zone Set          ft.

Top Recorder Depth (Inside) 3,375 ft. Recorder Number 21099 Cap. 5,000 psi

Bottom Recorder Depth (Outside) 3,397 ft. Recorder Number 11073 Cap. 3,900 psi

Below Straddle Recorder Depth          ft. Recorder Number          Cap.          psi

Drilling Contractor Sterling Drilling Company - Rig 1 Drill Collar Length 240 ft. I.D. 2 1/4 in.

Mud Type Chemical Viscosity 56 Weight Pipe Length -- ft. I.D. -- in.

Weight 8.9 Water Loss 10.0 cc. Drill Pipe Length 3,112 ft. I.D. 3 1/2 in.

Chlorides 5,000 P.P.M. Test Tool Length 20 ft. Tool Size 3 1/2 - IF in.

Jars: Make Bowen Serial Number Not Run Anchor Length 28 ft. Size 4 1/2 - FH in.

Did Well Flow? No Reversed Out No Surface Choke Size 1 in. Bottom Choke Size 5/8 in.

Main Hole Size 7 7/8 in. Tool Joint Size 4 1/2 - XH in.

Blow: 1st Open: Weak, 2 in., blow. No blow back during shut-in.

2nd Open: Weak, 1 in., blow. No blow back during shut-in.

Recovered 250 ft. of very slightly oil cut muddy water = 1.322800 bbls. (Grind out: 3%-oil; 15%-mud; 82%-water)

Recovered          ft. of          Chlorides: 64,000 Ppm

Recovered          ft. of         

Recovered          ft. of         

Recovered          ft. of         

Remarks         

Time Set Packer(s) 8:05 ~~XXXI.~~ P.M. Time Started Off Bottom 11:05 ~~XXXI.~~ P.M. Maximum Temperature 106°

Initial Hydrostatic Pressure          (A) 1577 P.S.I.

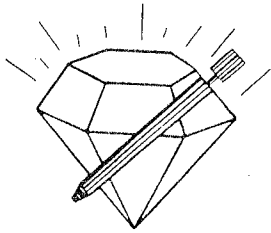
Initial Flow Period          Minutes 30 (B) 29 P.S.I. to (C) 86 P.S.I.

Initial Closed In Period          Minutes 45 (D) 1005 P.S.I.

Final Flow Period          Minutes 45 (E) 92 P.S.I. to (F) 149 P.S.I.

Final Closed In Period          Minutes 60 (G) 1003 P.S.I.

Final Hydrostatic Pressure          (H) 1553 P.S.I.



**DIAMOND TESTING**  
 P.O. Box 157  
**HOISINGTON, KANSAS 67544**  
 (620) 653-7550 • (800) 542-7313

**FLUID SAMPLE DATA**

Company L. D. Drilling, Inc.

Lease & Well No. Doonan No. 1-31

Date 11-9-04 Sec. 31 Twp. 20 S Range 12 W

Formation Test No. 4 Interval Tested From 3,372 ft. to 3,400 ft. Total Depth 3,400 ft.

Formation Lansing/Kansas City "J"

	MUD PIT	RECOVERY
Viscosity	<u>56</u> CP	<u>--</u> CP
Weight	<u>8.9</u>	<u>--</u>
Water Loss	<u>10.0</u> CC	<u>--</u> CC
PH Factor	<u>10.0</u>	<u>6.5</u>

	RESISTIVITY	CHLORIDE CONTENT
Recovery Water	<u>.16</u> @ <u>70</u> °F.	<u>60,000</u> ppm
Recovery Mud	<u>--</u> @ <u>--</u> °F.	<u>--</u> ppm
Recovery Mud Filtrate	<u>--</u> @ <u>--</u> °F.	<u>--</u> ppm
Mud Pit Sample	<u>1.30</u> @ <u>55</u> °F.	<u>5,800</u> ppm
Mud Pit Sample Filtrate	<u>1.10</u> @ <u>60</u> °F.	<u>6,000</u> ppm

Sample Taken By JOHN C. RIEDL

Witness By KIM B. SHOEMAKER

Remarks Pit filtrate triton dish chlorides were 5,000 Ppm  
Recovery water dish chlorides were 64,000 Ppm

## GENERAL INFORMATION

### Client Information:

Company: L D DRILLING INC

Contact: L D DAVIS

Phone: Fax: e-mail:

### Site Information:

Contact: KIM SHOEMAKER

Phone: Fax: e-mail:

### Well Information:

Name: DOONAN #1-31

Operator: L D DRILLING INC

Location-Downhole: DST 4 3372-3400

Location-Surface: S31/20S/12W BARTON COUNTY

### Test Information:

Company: DIAMOND TESTING

Representative: JOHN RIEDL

Supervisor: KIM SHOEMAKER

Test Type: CONVENTIONAL Job Number: D80

Test Unit: 2

Start Date: 2004/11/09 Start Time: 18:36:00

End Date: 2004/11/10 End Time: 01:49:40

Report Date: 2004/11/09 Prepared By: JOHN RIEDL

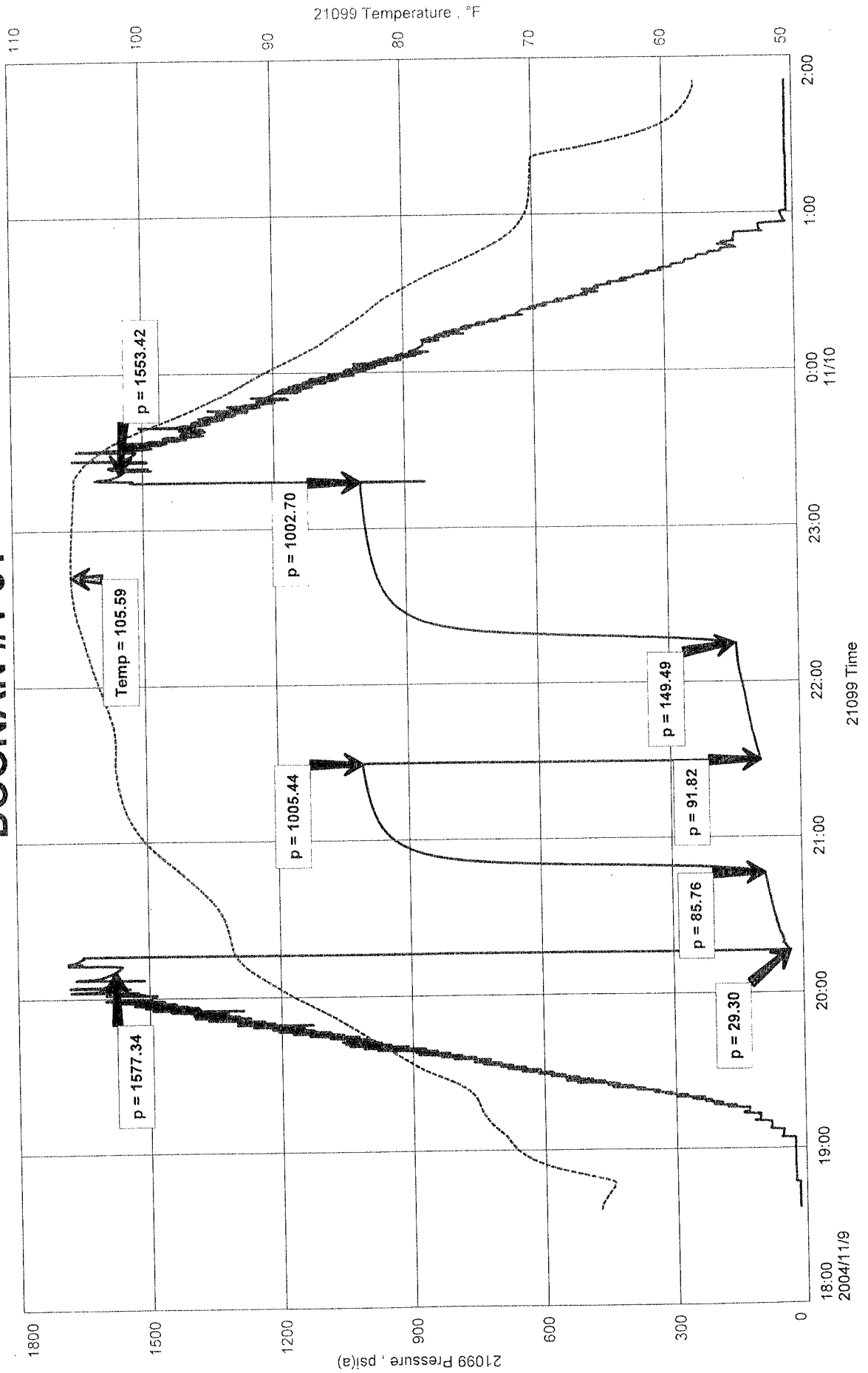
Qualified By: KIM SHOEMAKER

Remarks:  
RECOVERY: 250" SLOCMW {3%OIL 15%MUD 82%WATER} CHLORIDES 64,000Ppm

DOONAN #1-31  
Formation: LKC "J"  
Job Number: D80

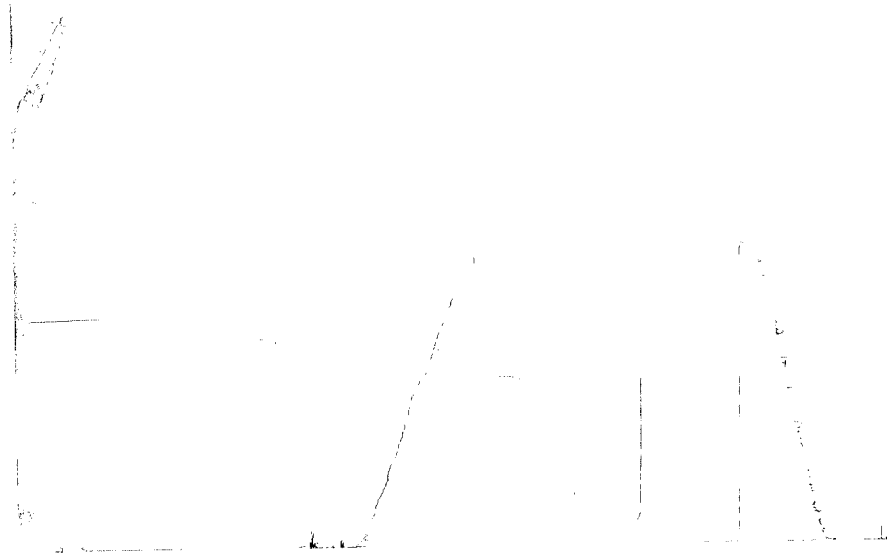
L D DRILLING INC  
DST 4 3372-3400  
Start Test Date: 2004/11/09  
Final Test Date: 2004/11/10

# DOONAN #1-31



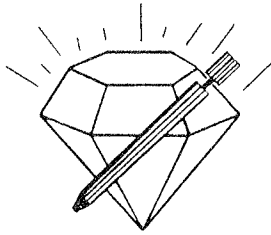
005N001-31

DST #4 ROOM #1073 OUTSIDE  
LOC. 3247



This is an actual photograph of recorder chart.

POINT	PRESSURE		Elec. Office Reading
	Field Reading		
(A) Initial Hydrostatic Mud .....	1577	1577	PSI
(B) First Initial Flow Pressure.....	29	29	PSI
(C) First Final Flow Pressure .....	86	86	PSI
(D) Initial Closed-in Pressure .....	1005	1005	PSI
(E) Second Initial Flow Pressure.....	92	92	PSI
(F) Second Final Flow Pressure.....	149	149	PSI
(G) Final Closed-in Pressure.....	1003	1003	PSI
(H) Final Hydrostatic Mud .....	1553	1553	PSI



# DIAMOND TESTING

P.O. Box 157  
HOISINGTON, KANSAS 67544  
(620) 653-7550 • (800) 542-7313  
STC 21099.D81

Company L. D. Drilling, Inc. Lease & Well No. Doonan No. 1-31

Elevation 1853 GL Formation Arbuckle Effective Pay      -- Ft. Ticket No. J1574

Date 11-10-04 Sec. 31 Twp. 20S Range 12W County Barton State Kansas

Test Approved By Kim B. Shoemaker Diamond Representative John C. Riedl

Formation Test No. 5 Interval Tested from 3,496 ft. to 3,511 ft. Total Depth 3,511 ft.

Packer Depth 3,491 ft. Size 6 3/4 in. Packer Depth      -- ft. Size      -- in.

Packer Depth 3,496 ft. Size 6 3/4 in. Packer Depth      -- ft. Size      -- in.

Depth of Selective Zone Set      ft.

Top Recorder Depth (Inside) 3,499 ft. Recorder Number 21099 Cap. 5,000 psi

Bottom Recorder Depth (Outside) 3,508 ft. Recorder Number 11073 Cap. 3,900 psi

Below Straddle Recorder Depth      ft. Recorder Number      Cap.      psi

Drilling Contractor Sterling Drilling Company - Rig 1 Drill Collar Length 240 ft. I.D. 2 1/4 in.

Mud Type Chemical Viscosity 58 Weight Pipe Length      -- ft. I.D.      -- in.

Weight 8.8 Water Loss 9.6 cc. Drill Pipe Length 3,236 ft. I.D. 3 1/2 in.

Chlorides 6,000 P.P.M. Test Tool Length 20 ft. Tool Size 3 1/2 - IF in.

Jars: Make Bowen Serial Number Not Run Anchor Length 15 ft. Size 4 1/2 - FH in.

Did Well Flow? No Reversed Out No Surface Choke Size 1 in. Bottom Choke Size 5/8 in.

Main Hole Size 7 7/8 in. Tool Joint Size 4 1/2 - XH in.

Blow: 1st Open: Weak blow. Dead in 20 mins.

2nd Open: Very weak blow. Dead in 2 mins.

Recovered 5 ft. of heavy oil cut mud = .024600 bbls. (Grind out: 30%-oil; 70%-mud)

Recovered      ft. of     

Recovered      ft. of     

Recovered      ft. of     

Recovered      ft. of     

Remarks     

Time Set Packer(s) 4:20 ~~XXM.~~ P.M. Time Started Off Bottom 6:20 ~~XXM.~~ P.M. Maximum Temperature 99°

Initial Hydrostatic Pressure (A) 1637 P.S.I.

Initial Flow Period Minutes 30 (B) 31 P.S.I. to (C) 32 P.S.I.

Initial Closed In Period Minutes 30 (D) 65 P.S.I.

Final Flow Period Minutes 30 (E) 33 P.S.I. to (F) 34 P.S.I.

Final Closed In Period Minutes 30 (G) 49 P.S.I.

Final Hydrostatic Pressure (H) 1628 P.S.I.

## GENERAL INFORMATION

### Client Information:

Company: L D DRILLING INC

Contact: L D DAVIS

Phone: Fax: e-mail:

### Site Information:

Contact: KIM SHOEMAKER

Phone: Fax: e-mail:

### Well Information:

Name: DOONAN #1-31

Operator: L D DRILLING INC

Location-Downhole: DST 5 3496-3511

Location-Surface: S31/20/12W BARTON COUNTY

### Test Information:

Company: DIAMOND TESTING

Representative: JOHN RIEDL

Supervisor: KIM SHOEMAKER

Test Type: CONVENTIONAL Job Number: D81

Test Unit: 2

Start Date: 2004/11/10 Start Time: 01:51:00

End Date: 2004/11/10 End Time: 21:01:40

Report Date: 2004/11/10 Prepared By: JOHN RIEDL

Qualified By: KIM SHOEMAKER

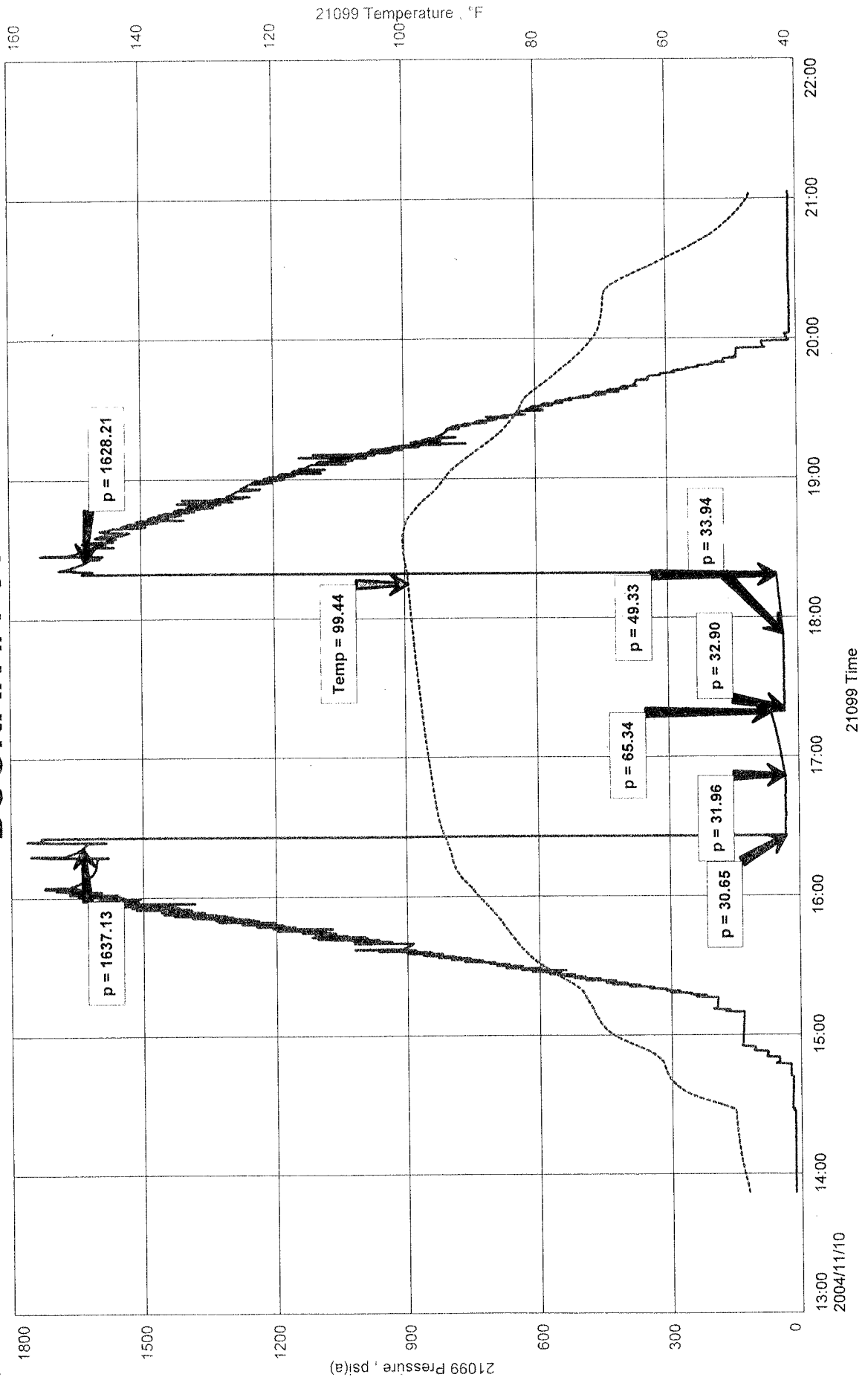
### Remarks:

RECOVERY 5' HVYOCM [30%OIL 70%MUD]

DOONAN #1-31  
Formation: ARBUCKLE  
Job Number: D81

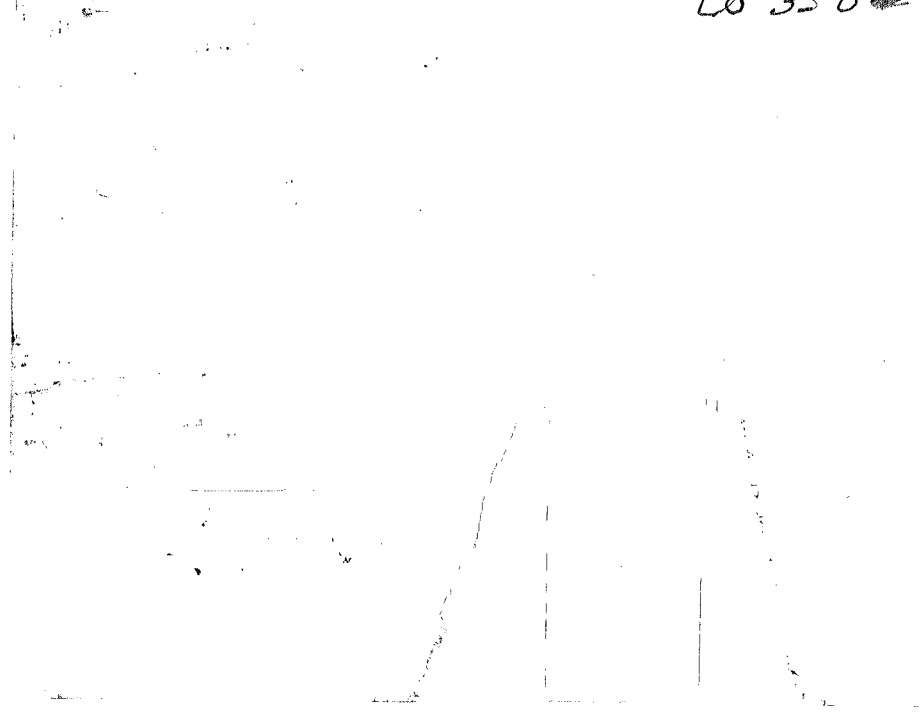
L D DRILLING INC  
DST 5 3496-3511  
Start Test Date: 2004/11/10  
Final Test Date: 2004/11/10

# DOONAN #1-31



POONAS 4-31

1st #5 RSC # 11023 OUT # 45  
LO 358



This is an actual photograph of recorder chart.

POINT	PRESSURE		PSI
	Field Reading	Elec. Office Reading	
(A) Initial Hydrostatic Mud .....	1637	1637	PSI
(B) First Initial Flow Pressure.....	31	31	PSI
(C) First Final Flow Pressure .....	32	32	PSI
(D) Initial Closed-in Pressure .....	65	65	PSI
(E) Second Initial Flow Pressure.....	33	33	PSI
(F) Second Final Flow Pressure.....	34	34	PSI
(G) Final Closed-in Pressure.....	49	49	PSI
(H) Final Hydrostatic Mud.....	1628	1628	PSI