

WELL COMPLETION REPORT AND DRILLER'S LOG

State Geological Survey
KANSAS
WICHITA BRANCH

S. 27th T. 20S R. 13 E W

Loc. NW, NE, NW

County Barton

API No. 15 — 009 — 22331
 County Number

Operator
 Tenneco Oil Company

Address
 Suite 139, Ciudad Bldg.
 3000 United Founders Blvd., Okla. City, OK, 73112

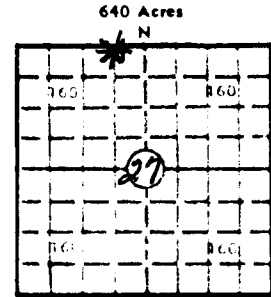
Well No. "C" 5 Lease Name Sandrock

Footage Location
 330' feet from (N) line 1650' feet from (E) (W) line

Principal Contractor H-30, Inc. Geologist Doug McGuinness II

Spud Date 4-22-81 Date Completed 4-29-81 Total Depth 3580' P.B.T.D.

Directional Deviation Oil and/or Gas Purchaser



Locate well correctly

Elev.: Gr. 1880'

DF KB 1885'

CASING RECORD

Report of all strings set — surface, intermediate, production, etc.

Purpose of string	Size hole drilled	Size casing set (in O.D.)	Weight lbs/ft.	Setting depth	Type cement	Socks	Type and percent additives
Surface	12-1/4"	8-5/8"		503'		300	

LINER RECORD

PERFORATION RECORD

Top, ft.	Bottom, ft.	Sacks cement	Shots per ft.	Size & type	Depth interval

TUBING RECORD

Size	Setting depth	Packer set at

ACID, FRACTURE, SHOT, CEMENT SQUEEZE RECORD

Amount and kind of material used	Depth interval treated

INITIAL PRODUCTION

Date of first production Dry	Producing method (flowing, pumping, gas lift, etc.)				
RATE OF PRODUCTION PER 24 HOURS	Oil Dry bbls.	Gas Dry MCF	Water bbls.	Gas-oil ratio	CFPB
Disposition of gas (vented, used on lease or sold)			Producing interval(s)		

INSTRUCTIONS: As provided in KCC Rule 82-2-125, within 90 days after completion of a well, one completed copy of this Drillers Log shall be transmitted to the State Geological Survey of Kansas, 4150 Monroe Street, Wichita, Kansas 67209. Copies of this form are available from the Conservation Division, State Corporation Commission, 245 No. Water, Wichita, Kansas 67202. Phone AC 316-522-2206. If confidential custody is desired, please note Rule 82-2-125. Drillers Logs will be on open file in the Oil and Gas Division, State Geological Survey of Kansas, Lawrence, Kansas 66044.

Operator Tenneco Oil Company		DESIGNATE TYPE OF COMP.: OIL, GAS, DRY HOLE, SWDW, ETC.:
Well No. "C" 5	Lease Name Sandrock	Dry
S 27 T 20SR 13 K W		


WELL LOG

Show all important zones of porosity and contents thereof; cored intervals, and all drill-stem tests, including depth interval tested, cushion used, time tool open, flowing and shut-in pressures, and recoveries.

SHOW GEOLOGICAL MARKERS, LOGS RUN, OR OTHER DESCRIPTIVE INFORMATION.

FORMATION DESCRIPTION, CONTENTS, ETC.	TOP	BOTTOM	NAME	DEPTH
Chase	1710		CDL	
Council Grove	2026		BHC-A/L	
Wahaunsee	2570		LL-GR-N	
Heebner	3129		CDL	
Toronto	3149			
Douglas	3167			
Brown Lime	3249			
Lansing/KC	3263			
Base/KC	3489			
Chty Conglomerate	3520			
RTD	3580			

USE ADDITIONAL SHEETS, IF NECESSARY, TO COMPLETE WELL RECORD.

Date Received	 Signature Carolyn S. Arnold
	Production Analyst
	Title July 14, 1981
	Date

KANSAS DRILLERS LOG

COMPANY Tenneco Oil Company

FARM Sandrock

NO. C-5

SEC. 27 T. 20 R. 13W

LOC. 1650' FWL
330' FNL

COUNTY Barton

ROTARY TOTAL DEPTH 3,580'

COMM. April 22, 1981

COMP. April 29, 1981

CONTRACTOR H-30, INC.

ISSUED May 15, 1981

State Geological Survey
WICHITA, BRANCH

CASING

10 3/4"

8 5/8" Set at 503' cemented w/300 sxs cement

5 1/2"

4 1/2"

ELEVATION 1,880' G.L.

FIGURES INDICATE BOTTOM OF FORMATIONS

Sand	40'
Sand and Shale	70'
Hard Sand and Iron	80'
Sand and Shale	505'
Shale and Red Bed	1,180'
Shale	1,550'
Shale and Lime	1,950'
Lime and Shale	2,200'
Shale	2,420'
Lime and Shale	2,875'
Shale	3,030'
Lime and Shale	3,380'
Lime	3,580'
Rotary Total Depth	3,580'

I hereby certify the above and foregoing to be a true and correct log of the above described well as shown by the drilling reports.

H-30, INC.

Gary Younger
Gary Younger

State of Kansas)
) ss:
County of Sedgwick)

Subscribed and Sworn to before me, a Notary Public, in and for said county and state this 15th day of May, 1981.

NOTARY PUBLIC