

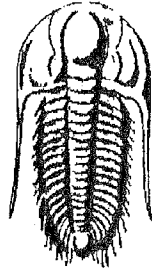
15-009-24808

KCC 25-20s-13w

FEB 07 2005

CONFIDENTIAL

25-20s-13w



**TRILOBITE
TESTING, INC.**

DRILL STEM TEST REPORT

Prepared For: **American Warrior Inc**

P O Box 399
Garden City Ks 67846-0399

ATTN: Cecil O'Brate

25-20s-13w Barton

Marmie #2-25

Start Date: 2004.10.24 @ 15:45:28

End Date: 2004.10.24 @ 22:45:57

Job Ticket #: 20878 DST #: 1

American Warrior Inc

Marmie #2-25

25-20s-13w Barton

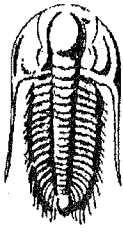
DST # 1

LKC A-B

2004.10.24

**RECEIVED
FEB 10 2005
KCC WICHITA**

Trilobite Testing, Inc
PO Box 362 Hays, KS 67601
ph: 785-625-4778 fax: 785-625-5620



**TRILOBITE
TESTING, INC.**

DRILL STEM TEST REPORT

American Warrior Inc
P O Box 399
Garden City Ks 67846-0399
ATTN: Cecil O'Brate

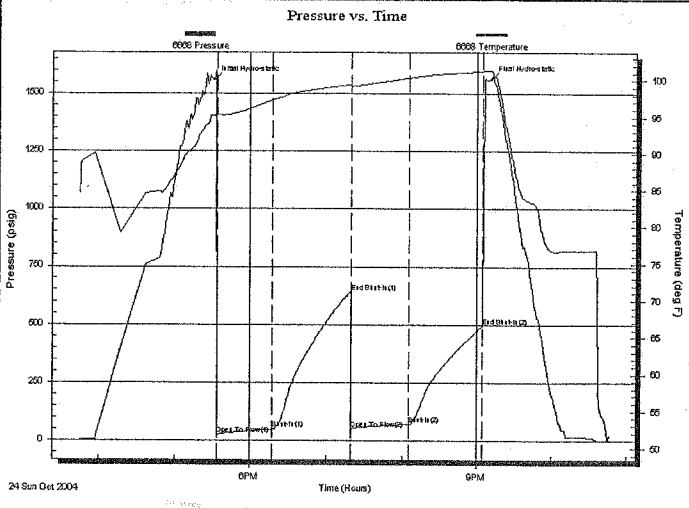
Marmie #2-25
25-20s-13w Barton
Job Ticket: 20878 **DST#: 1**
Test Start: 2004.10.24 @ 15:45:28

GENERAL INFORMATION:

Formation: **LKC A-B**
Deviated: No Whipstock: ft (KB)
Time Tool Opened: 17:33:57
Time Test Ended: 22:45:57
Interval: **3234.00 ft (KB) To 3283.00 ft (KB) (TVD)**
Total Depth: 3283.00 ft (KB) (TVD)
Hole Diameter: 7.85 inches Hole Condition: Fair
Test Type: Conventional Bottom Hole
Tester: Ray Schwager
Unit No: 28
Reference Elevations: 1866.00 ft (KB)
1857.00 ft (CF)
KB to GR/CF: 9.00 ft

Serial #: 6668 **Inside**
Press@RunDepth: 69.79 psig @ 3245.01 ft (KB) Capacity: 7000.00 psig
Start Date: 2004.10.24 End Date: 2004.10.24 Last Calib.: 2004.10.24
Start Time: 15:45:28 End Time: 22:45:57 Time On Btm: 2004.10.24 @ 17:31:27
Time Off Btm: 2004.10.24 @ 21:11:27

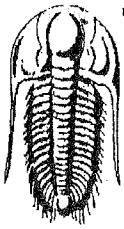
TEST COMMENT: IFF-w k to fair bl 1/2" to 4" bl
FFP-w k bl thru-out 1/4" to 1/2"bl
Times 45-60-45-60



| PRESSURE SUMMARY | | | |
|------------------|-----------------|--------------|----------------------|
| Time (Min.) | Pressure (psig) | Temp (deg F) | Annotation |
| 0 | 1559.42 | 95.27 | Initial Hydro-static |
| 3 | 22.61 | 95.30 | Open To Flow (1) |
| 47 | 47.45 | 97.32 | Shut-In(1) |
| 108 | 641.76 | 99.40 | End Shut-In(1) |
| 108 | 49.10 | 99.23 | Open To Flow (2) |
| 154 | 69.79 | 100.32 | Shut-In(2) |
| 214 | 494.49 | 101.25 | End Shut-In(2) |
| 220 | 1561.14 | 101.34 | Final Hydro-static |

| Recovery | | |
|-------------|---------------------------|--------------|
| Length (ft) | Description | Volume (bbl) |
| 80.00 | SO&GCM 1%oil 4%gas 95%mud | 1.12 |
| 0.00 | 220'GIP | 0.00 |
| | | |
| | | |
| | | |

| Gas Rates | | | |
|-----------|----------------|-----------------|------------------|
| | Choke (inches) | Pressure (psig) | Gas Rate (Mcf/d) |
| | | | |
| | | | |
| | | | |



TRILOBITE
TESTING, INC

DRILL STEM TEST REPORT

TOOL DIAGRAM

American Warrior Inc
P O Box 399
Garden City Ks 67846-0399
ATTN: Cecil O'Brate

Marmie #2-25
25-20s-13w Barton
Job Ticket: 20878 DST#: 1
Test Start: 2004.10.24 @ 15:45:28

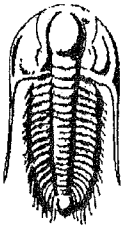
Tool Information

| | | | | |
|---------------------------|--------------------|-----------------------|--------------------------------|------------------------------------|
| Drill Pipe: | Length: 3223.00 ft | Diameter: 3.80 inches | Volume: 45.21 bbl | Tool Weight: 2200.00 lb |
| Heavy Wt. Pipe: | Length: 0.00 ft | Diameter: 0.00 inches | Volume: 0.00 bbl | Weight set on Packer: 25000.00 lb |
| Drill Collar: | Length: 0.00 ft | Diameter: 0.00 inches | Volume: 0.00 bbl | Weight to Pull Loose: 70000.00 lb |
| | | | <u>Total Volume: 45.21 bbl</u> | Tool Chased: 0.00 ft |
| Drill Pipe Above KB: | 10.00 ft | | | String Weight: Initial 62000.00 lb |
| Depth to Top Packer: | 3234.00 ft | | | Final 63000.00 lb |
| Depth to Bottom Packer: | ft | | | |
| Interval between Packers: | 49.02 ft | | | |
| Tool Length: | 70.02 ft | | | |
| Number of Packers: | 2 | Diameter: 6.75 inches | | |
| Tool Comments: | | | | |

| Tool Description | Length (ft) | Serial No. | Position | Depth (ft) | Accum. Lengths |
|------------------|-------------|------------|----------|------------|------------------------------------|
| Change Over Sub | 1.00 | | | 3214.00 | |
| Shut In Tool | 5.00 | | | 3219.00 | |
| Hydraulic tool | 5.00 | | | 3224.00 | |
| Packer | 5.00 | | | 3229.00 | 21.00 Bottom Of Top Packer |
| Packer | 5.00 | | | 3234.00 | |
| Stubb | 1.00 | | | 3235.00 | |
| Perforations | 10.00 | | | 3245.00 | |
| Recorder | 0.01 | 6668 | Inside | 3245.01 | |
| Perforations | 35.00 | | | 3280.01 | |
| Recorder | 0.01 | 13534 | Outside | 3280.02 | |
| Bullnose | 3.00 | | | 3283.02 | 49.02 Bottom Packers & Anchor |

Total Tool Length: 70.02

RECEIVED
OCT 20 2005
KCC WICHITA



TRILOBITE
TESTING, INC.

DRILL STEM TEST REPORT

FLUID SUMMARY

American Warrior Inc
P O Box 399
Garden City Ks 67846-0399
ATTN: Cecil O'Brate

Marmie #2-25
25-20s-13w Barton
Job Ticket: 20878 **DST#: 1**
Test Start: 2004.10.24 @ 15:45:28

Mud and Cushion Information

| | | | |
|-----------------------------------|----------------------------|-----------------|---------|
| Mud Type: Gel Chem | Cushion Type: | Oil API: | deg API |
| Mud Weight: 9.00 lb/gal | Cushion Length: ft | Water Salinity: | ppm |
| Viscosity: 60.00 sec/qt | Cushion Volume: bbl | | |
| Water Loss: 11.96 in ³ | Gas Cushion Type: | | |
| Resistivity: ohm.m | Gas Cushion Pressure: psig | | |
| Salinity: 10000.00 ppm | | | |
| Filter Cake: 2.00 inches | | | |

Recovery Information

Recovery Table

| Length ft | Description | Volume bbl |
|--------------|---------------------------|---------------|
| 80.00 | SO&GCM 1%oil 4%gas 95%mud | 1.122 |
| 0.00 | 220'GIP | 0.000 |

Total Length: 80.00 ft Total Volume: 1.122 bbl
Num Fluid Samples: 0 Num Gas Bombs: 0 Serial #:
Laboratory Name: Laboratory Location:
Recovery Comments:

Serial #: 6668

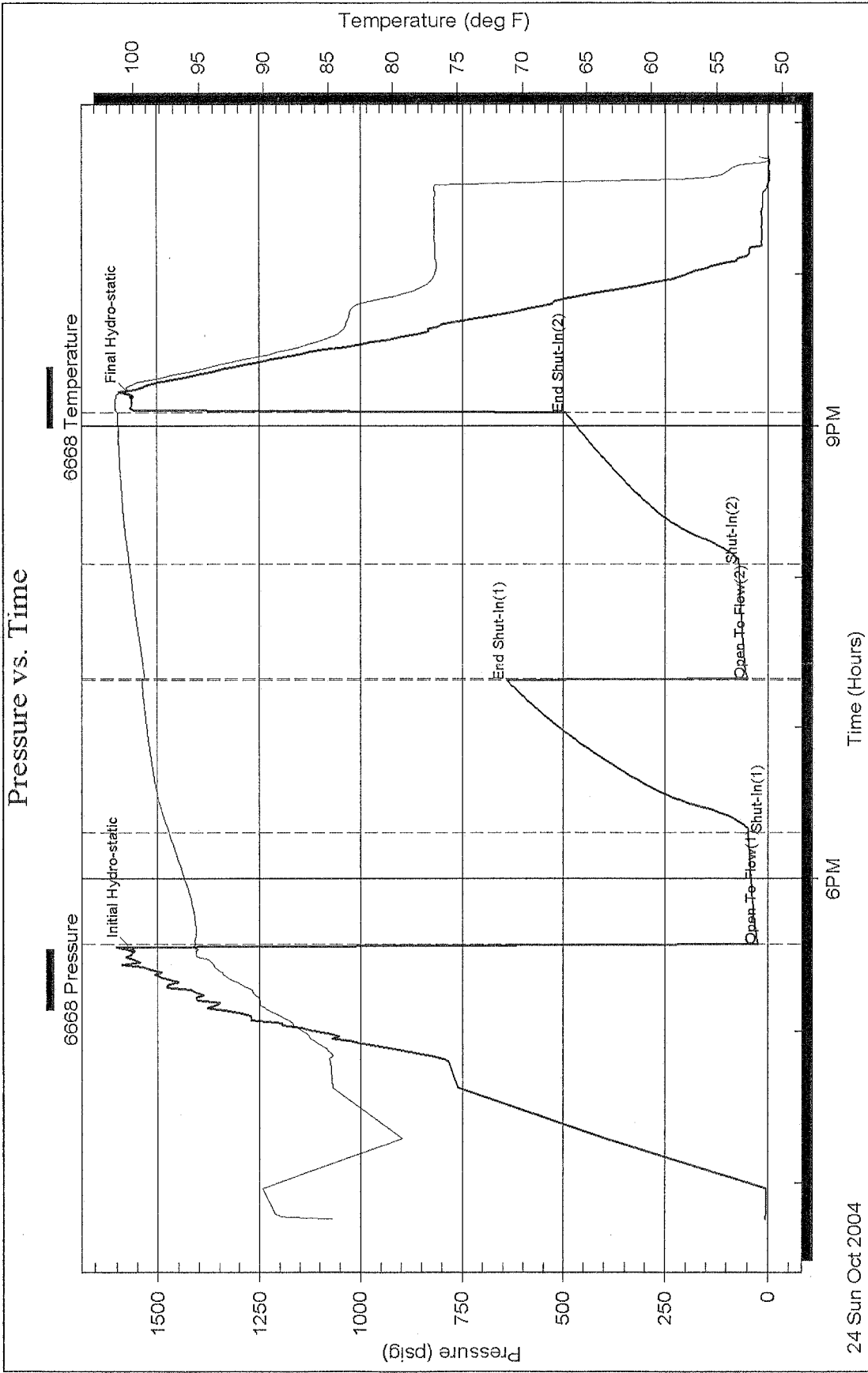
Inside

American Warrior Inc

25-20s-13w Barton

DST Test Number: 1

Pressure vs. Time



24 Sun Oct 2004

6PM

9PM

Time (Hours)

Trilobite Testing, Inc

Ref. No: 20878

RECEIVED

FEB 10 2005

KCC WICHITA