

F.G. Hall Co.
Booth 1-18

18-20s-13w
15-009-24922

Superior Testers Enterprises, Inc.

R.R. 3, Box 295B, Great Bend, Kansas 67530
(316) 792-6902

Date 4-3-06 Location 18-20-BW Elevation 1897 County Barton

Company F.G. Hall Company - LLC Number of Copies 5

Charts Mailed to 9431 E Central St #100 Wichita KS 67206

Drilling Contractor Duke Drilling CO - Rig #8

Length Drill Pipe 1627 I.D. Drill Pipe 3.8 Tool Joint Size 4 1/2 XH

Length Weight Pipe _____ I.D. Weight Pipe _____ Tool Joint Size _____

Length Drill Collars 62 I.D. Drill Collars 225 Tool Joint Size 4 1/2 XH

Top Packer Depth 1710 Bottom Packer Depth 1715 Number of Packers 2 Packer Size 6 3/4

TESTED FROM 1715 TO 1770 ANCHOR LENGTH 55 TOTAL DEPTH 1770 Hole Size 7 7/8

LEASE & WELL NO. Booth 1-18 FORMATION TESTED Herrington TEST NO. 1

Mud Weight 8.7 Viscosity 65 Water Loss 6.8 Chlorides - Pits 8,500 D.S.T. _____

Maximum Temp. 79 °F Initial Hydrostatic Pressure (A) 3981.4 P.S.I. Final Hydrostatic Pressure (H) 3891 P.S.I.

Tool Open I.F.P. from 5:54 A m to 6:09 A m 15 min

Tool Closed I.C.I.P. from 6:09 A m to 6:39 A m 30 min

Tool Open F.F.P. from 6:39 A m to 7:09 A m 30 min

Tool Closed F.C.I.P. from 7:09 A m to 8:09 A m 60 min

Initial Blow Weak Blow Built to 4 inches into bucket in 15 min

Final Blow Weak Blowing Blow Built to 7 inches in 30 min

Total Feet Recovered _____ Gravity of Oil _____ Corrected

10 Feet of Drilling Mud % Gas _____ % Oil _____ % Mud _____ % Water _____

_____ Feet of _____ % Gas _____ % Oil _____ % Mud _____ % Water _____

_____ Feet of _____ % Gas _____ % Oil _____ % Mud _____ % Water _____

_____ Feet of _____ % Gas _____ % Oil _____ % Mud _____ % Water _____

_____ Feet of _____ % Gas _____ % Oil _____ % Mud _____ % Water _____

_____ Feet of _____ % Gas _____ % Oil _____ % Mud _____ % Water _____

_____ Feet of _____ % Gas _____ % Oil _____ % Mud _____ % Water _____

_____ Feet of _____ % Gas _____ % Oil _____ % Mud _____ % Water _____

Remarks _____

Extra Equipment - Jars yes Safety Joint yes Extra Packer — Straddle — Hook Wall —

Top Recorder No. 4025 Clock No. Electronic Depth 17 Cir. Sub _____ Sampler _____

Bottom Recorder No. 3988 Clock No. 4744 Depth 17 Insurance _____

Price of Job _____

Tool Operator James Schaefer

Approved By _____

No 14516

from [B] <u>320</u> P.S.I. to [C] <u>320</u> P.S.I.
[D] <u>110</u> P.S.I.
from [E] <u>72</u> P.S.I. to [F] <u>320</u> P.S.I.
[G] <u>85</u> P.S.I.

Superior Testers Enterprises, Inc. shall not be liable for damage of any kind to the property or personnel of the one for whom a test is made, of for any loss suffered or sustained, directly or indirectly, through the use of its equipment, or its statements or opinion concerning the results of any test. Tools lost or damaged in the hole shall be paid for at cost by the party for whom the test is made.

SUPERIOR TESTERS ENTERPRISES INC.

1(800)792-6902

DRILL STEM TEST REPORT

GREAT BEND, KANSAS 67530

Company: F.G HOLL COMPANY L.L.C
RGE. 13

1	Initial Hydrostatic Pressure	814
2	Initial Flow Pressure	57
3	Final Initial Flow Pressure	70
4	Initial Shut-In Pressure	110
5	Initial Final Flow Pressure	72
6	Final Flow Pressure	76
7	Final Shut-In Pressure	85
8	Final Hydrostatic Pressure	789

Maximum Temperature 79

GENERAL INFORMATION

COMPANY NAME F. GHOLL COMPANY L.L.C	
TEST DATE 4/3/06	LEASE AND WELL NUMBER BOOTH 1-18
SECTION-TOWN-RANGE 18-20-13	FORMATION TESTED HERRINGTON
STATE KANSAS	DRILL STEM TEST NUMBER 1
COUNTY BARTON	REPORT NUMBER 14516
ELEVATION GROUND LEVEL 1897	ELEVATION KELLY BUSHINGS 1905
COMPANY REPRESENTATIVE BILL REE	TESTING ENGINEER JARED L. SCHECK

TOOL SETTING INFORMATION

TEST INTERVAL (From) 1715	TOP PACKER DEPTH 1710
TEST INTERVAL (to) 1770	BOTTOM PACKER DEPTH 1715
ANCHOR LENGTH 55	NUMBER OF PACKERS 2
TOTAL DEPTH (ft) 1770	PACKER SIZE 6 3/4
	HOLE SIZE 7 7/8

FLOW TIMES

TOOL OPEN (from) 5:54	TOOL OPEN (from) 6:39
<i>INITIAL OPEN</i> TOOL OPEN (to) 6:09	<i>FINAL OPEN</i> TOOL OPEN (to) 7:09
DURATION (min.) 15	DURATION (min.) 30
TOOL CLOSED (from) 6:09	TOOL CLOSED (from) 7:09
<i>INITIAL SHUT-IN</i> TOOL CLOSED (to) 6:39	<i>FINAL SHUT-IN</i> TOOL CLOSED (to) 8:09
DURATION (min.) 30	DURATION (min.) 60

INITIAL FLOW WEAK BLOW BUILT 4 INCHS INTO BUCKET IN 15 MIN

FINAL FLOW WEAK BLOW BUILT TO 7 INCHS INTO BUCKET IN 30 MIN

FEET OF	RECOVERY	RECOVERY DESCRIPTION	%	%	%	%
Recovery			GAS	OIL	MUD	WATER
1)	10	DRILLING MUD				
2)						
3)						
4)						
5)						
6)						

Lease & Well No. BOOTH 1-18

Test #: 1 Date: 4-3-06

SEC. 18 TWP. 20

SUPERIOR TESTERS ENTERPRISES L.L.C.
DRILL STEM TEST REPORT
GREAT BEND ,KANSAS 67530 (800)792-6902

GENERAL INFORMATION

COMPANY NAME	RITCHIE EXPLORATION INC.		
TEST DATE	3/31/06	LEASE AND WELL NUMBER	B. BROOKS #2
SECTION-TOWN-RANGE	6-17-30W	FORMATION TESTED	LANSING "I" & "J"
STATE	KANSAS	DRILL STEM TEST NUMBER	1
COUNTY	LANE	REPORT NUMBER	14209
ELEVATION GROUND LEVEL	2894	ELEVATION KELLY BUSHINGS	2889
COMPANY REPRESENTATIVE	ROGER	TESTING ENGINEER	NATHAN MANRING

EXTRA EQUIPMENT

JARS	NO	EXTRA PACKER (3RD)	NO
SAFETY JOINT	NO	EXTRA PACKER (4TH)	NO
ELECTRONIC RECORDER	YES	STRADDLE	NO
CIRCULATING SUB	NO	HOOK WALL	NO
		SAMPLER	NO
	40 MILES ROUND TRIP FROM	SCOTT CITY	
TOP RECORDER DEPTH	4220	BOTTOM RECORDER DEPTH	4221
RECORDER NUMBER	91981	RECORDER NUMBER	5463

WELL INFORMATION

DRILLING CONTRACTOR	L.D. DRILLING RIG #1		
DRILL PIPE LENGTH	4150	DRILL COLLAR LENGTH	NONE
DRILL PIPE I.D.	3.8	DRILL COLLAR I.D.	2.25
TOOL JOINT SIZE	4 1/2 X.H.	TOOL JOINT SIZE	4 1/2 X.H.
WEIGHT PIPE LENGTH	NONE	MUD WEIGHT #/GAL	9.2
WEIGHT PIPE I.D.	2.25	VISCOSITY	44
TOOL JOINT SIZE	4 1/2 X.H.	WATER LOSS	7.2
		CHLORIDES-PITS	1,600
		CHLORIDES-DST	

COMMENTS

TOOL HIT 15 FEET FROM BOTTOM WITH 15 FEET UP ON THE DRILL PIPE SET AND OPENED TOOL. TOOL SLIDE 15 FEET IN 15 MINUTES HAD TO PICK TOOL BACK UP AND ADD ANOTHER JOINT OF PIPE . RESET AND OPENED TOOL AND FINISHED RUNNING THE TEST.

Superior Testers Enterprises, Inc.

R.R. 3, Box 295B, Great Bend, Kansas 67530

(316) 792-6902

Date 4-04-06 Location 18-20-13W Elevation 1897 County Barton

Company F.G. Hall Company Number of Copies 5

Charts Mailed to 9431 E Central St #100 Wichita KS 67206

Drilling Contractor Duke Drilling #8

Length Drill Pipe 2228 I.D. Drill Pipe 3.6 Tool Joint Size 4 1/2" A

Length Weight Pipe _____ I.D. Weight Pipe _____ Tool Joint Size _____

Length Drill Collars _____ I.D. Drill Collars _____ Tool Joint Size _____

Top Packer Depth 2249 Bottom Packer Depth 2254 Number of Packers 2 Packer Size 6 3/4"

TESTED FROM 2254 TO 2326 ANCHOR LENGTH 72 TOTAL DEPTH 2326 Hole Size 7 7/8"

LEASE & WELL NO. Booth 1-18 FORMATION TESTED Conn TEST NO. 2

Mud Weight 9.2 Viscosity 42 Water Loss 12.8 Chlorides - Ppt 33000 D.S.T. _____

Maximum Temp. 87 °F Initial Hydrostatic Pressure (A) 1158 P.S.I. Final Hydrostatic Pressure (H) 1089 P.S.I.

Tool Open I.F.P. from 12:59 p.m. to 1:14 p.m. 15 min

Tool Closed I.C.I.P. from 1:14 p.m. to 1:44 p.m. 30 min

Tool Open F.F.P. from 1:44 p.m. to 1:59 p.m. 15 min

Tool Closed F.C.I.P. from 1:59 p.m. to 2:29 p.m. 30 min

from [B] <u>75</u>	P.S.I. to [C] <u>74</u>	P.S.I.
[D] _____	<u>802</u>	P.S.I.
from [E] <u>74</u>	P.S.I. to [F] <u>76</u>	P.S.I.
[G] _____	<u>795</u>	P.S.I.

Initial Blow Weak Blow Built 1/2 inch into Bucket in 15 min

Final Blow Weak Blow Built 1/2 inch into Duckfoot in 15 min

Total Feet Recovered _____ Gravity of Oil _____ Corrected

30 Feet of Drilling mud % Gas _____ % Oil _____ % Mud _____ % Water _____

_____ Feet of _____ % Gas _____ % Oil _____ % Mud _____ % Water _____

_____ Feet of _____ % Gas _____ % Oil _____ % Mud _____ % Water _____

_____ Feet of _____ % Gas _____ % Oil _____ % Mud _____ % Water _____

_____ Feet of _____ % Gas _____ % Oil _____ % Mud _____ % Water _____

_____ Feet of _____ % Gas _____ % Oil _____ % Mud _____ % Water _____

_____ Feet of _____ % Gas _____ % Oil _____ % Mud _____ % Water _____

_____ Feet of _____ % Gas _____ % Oil _____ % Mud _____ % Water _____

_____ Feet of _____ % Gas _____ % Oil _____ % Mud _____ % Water _____

Remarks _____

Extra Equipment - Jars yes Safety Joint yes Extra Packer _____ Straddle — Hook Wall —

Top Recorder No. 4023 Clock No. Electronica Depth 2322 Cir. Sub _____ Sampler _____

Bottom Recorder No. 3088 Clock No. 47441 Depth 2323 Insurance _____

Price of Job _____

Tool Operator Gay Schul

Approved By _____

Superior Testers Enterprises, Inc. shall not be liable for damage of any kind to the property or personnel of the one for whom a test is made, of for any loss suffered or sustained, directly or indirectly, through the use of its equipment, or its statements or opinion concerning the results of any test. Tools lost or damaged in the hole shall be paid for at cost by the party for whom the test is made.

No 14517

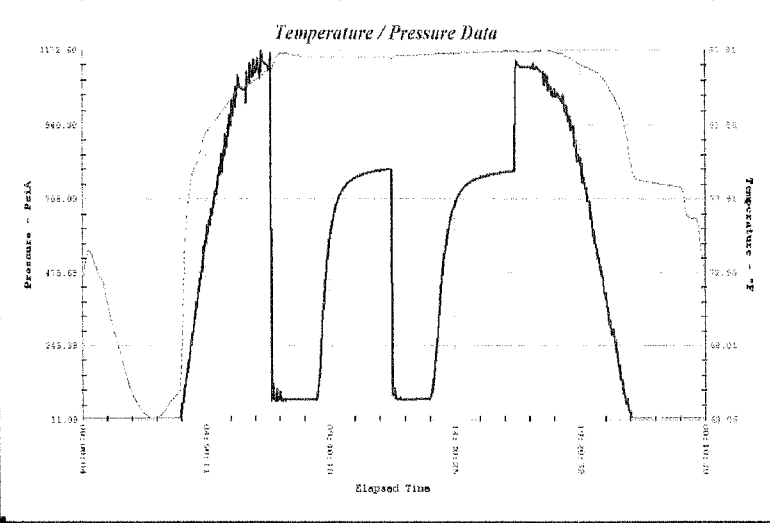
SUPERIOR TESTERS ENTERPRISES INC.

1(800)792-6902

DRILL STEM TEST REPORT

GREAT BEND, KANSAS 67530

Company: F.G HOLL COMPANY L.L.C
 TWP. 20 RGE. 13
 Lease & Well No. BOOTH 1-18
 Test #: 2 Date: 4-04-06 SEC. 18



1	Initial Hydrostatic Pressure	1158
2	Initial Flow Pressure	75
3	Final Initial Flow Pressure	74
4	Initial Shut-In Pressure	802
5	Initial Final Flow Pressure	74
6	Final Flow Pressure	76
7	Final Shut-In Pressure	795
8	Final Hydrostatic Pressure	1089
Maximum Temperature		87

GENERAL INFORMATION

COMPANY NAME F.G HOLL COMPANY L.L.C	
TEST DATE 4/4/06	LEASE AND WELL NUMBER BOOTH 1-18
SECTION-TOWN-RANGE 18-20-13W	FORMATION TESTED CONN
STATE KANSAS	DRILL STEM TEST NUMBER 2
COUNTY BARTON	REPORT NUMBER 14517
ELEVATION GROUND LEVEL 1897	ELEVATION KELLY BUSHINGS 1905
COMPANY REPRESENTATIVE BILL REE	TESTING ENGINEER JARED L. SCHECK

TOOL SETTING INFORMATION

TEST INTERVAL (From) 2254	TOP PACKER DEPTH 2249
TEST INTERVAL (to) 2326	BOTTOM PACKER DEPTH 2254
ANCHOR LENGTH 72	NUMBER OF PACKERS 2
TOTAL DEPTH (ft) 2326	PACKER SIZE 6 3/4
	HOLE SIZE 7 7/8

FLOW TIMES

TOOL OPEN (from) 12:59	TOOL OPEN (from) 1:44
<i>INITIAL OPEN</i> TOOL OPEN (to) 1:14	<i>FINAL OPEN</i> TOOL OPEN (to) 1:59
DURATION (min.) 15	DURATION (min.) 15
TOOL CLOSED (from) 1:14	TOOL CLOSED (from) 1:59
<i>INITIAL SHUT-IN</i> TOOL CLOSED (to) 1:44	<i>FINAL SHUT-IN</i> TOOL CLOSED (to) 2:29
DURATION (min.) 30	DURATION (min.) 30

INITIAL FLOW WEAK BLOW BUILT TO 1/2 INCH INTO BUCKET IN 15 MIN

FINAL FLOW WEAK BLOW BIULT TO 1/2 INTO BUCKET IIN 15 MIN

FEET OF	RECOVERY	RECOVERY DESCRIPTION	% GAS	% OIL	% MUD	% WATER
1)	30	DRILLING MUD				
2)						
3)						
4)						
5)						

SUPERIOR TESTERS ENTERPRISES INC.

DRILL STEM TEST REPORT

GREAT BEND ,KANSAS 67530 (800)792-6902

GENERAL INFORMATION

COMPANY NAME	F.G HOLL COMPANY L.L.C	LEASE AND WELL NUMBER	BOOTH 1-18
TEST DATE	4/4/06	FORMATION TESTED	CONN
SECTION-TOWN-RANGE	18-20-13W	DRILL STEM TEST NUMBER	2
STATE	KANSAS	REPORT NUMBER	14517
COUNTY	BARTON	ELEVATION KELLY BUSHINGS	1905
ELEVATION GROUND LEVEL	1897	TESTING ENGINEER	JARED L. SCHECK
COMPANY REPRESENTATIVE	BILL REE		

EXTRA EQUIPMENT

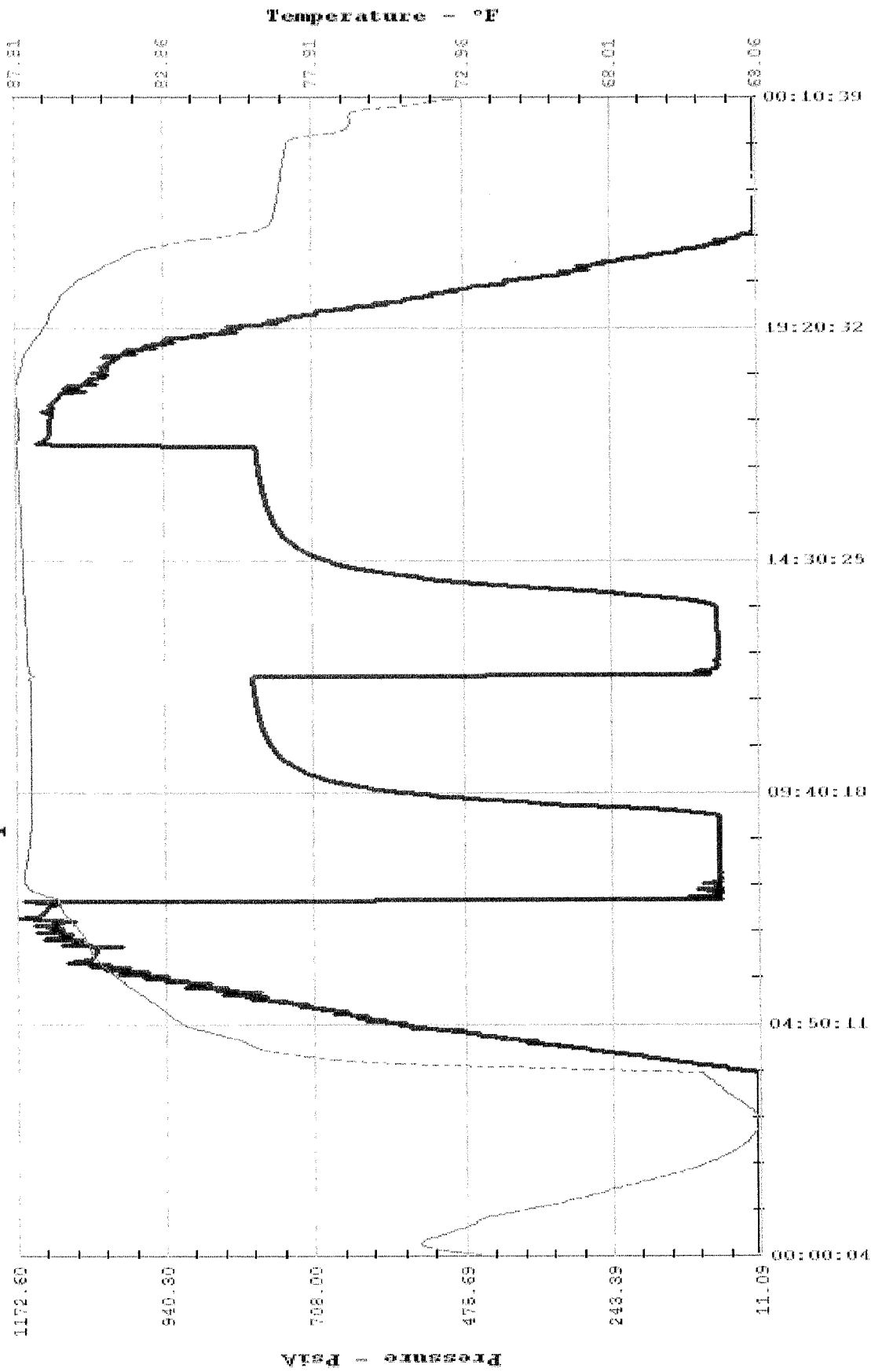
JARS	YES	EXTRA PACKER (3RD)	NO
SAFETY JOINT	YES	EXTRA PACKER (4TH)	NO
ELECTRONIC RECORDER	YES	STRADDLE	NO
CIRCULATING SUB	NO	HOOK WALL	NO
		SAMPLER	NO
	15 MILES ROUND TRIP FROM		GREAT BEND
TOP RECORDER DEPTH	2322	BOTTOM RECORDER DEPTH	2323
RECORDER NUMBER	91981	RECORDER NUMBER	5463

WELL INFORMATION

DRILLING CONTRACTOR	DUKE DRILLING RIG #8	DRILL COLLAR LENGTH	
DRILL PIPE LENGTH	2228	DRILL COLLAR I.D.	2.25
DRILL PIPE I.D.	3.8	TOOL JOINT SIZE	4 1/2 X.H.
TOOL JOINT SIZE	4 1/2 X.H.		
WEIGHT PIPE LENGTH		MUD WEIGHT #/GAL	9.2
WEIGHT PIPE I.D.	2.25	VISCOSITY	42
TOOL JOINT SIZE	4 1/2 X.H.	WATER LOSS	12.8
CHLORIDES-PITS		CHLORIDES-DST	33,000
		RESISTIVITY-DST	@

COMMENTS

Temperature / Pressure Data



Superior Testers Enterprises, Inc.

R.R. 3, Box 295B, Great Bend, Kansas 67530

(316) 792-6902

Date 4-5-06 Location 18-20-13w Elevation 1897 County Barton

Company FG Hall Company LLC Number of Copies 5

Charts Mailed to 9431 E Central St #100 Wichita KS 67206

Drilling Contractor Duke Drilling Rig #8

Length Drill Pipe 2584 I.D. Drill Pipe 3.8 Tool Joint Size 4 1/2 x 11

Length Weight Pipe _____ I.D. Weight Pipe _____ Tool Joint Size _____

Length Drill Collars _____ I.D. Drill Collars _____ Tool Joint Size _____

Top Packer Depth 2605 Bottom Packer Depth 2610 Number of Packers 2 Packer Size 6 3/4

TESTED FROM 2610 TO 2660 ANCHOR LENGTH 50 TOTAL DEPTH 2660 Hole Size 7 1/2

LEASE & WELL NO. Booth 1-18 FORMATION TESTED Wilmore TEST NO. 3

Mud Weight 8.7 Viscosity 50 Water Loss 7.2 Chlorides - Pitt 6000 D.S.T. _____

Maximum Temp. 90 °F Initial Hydrostatic Pressure (A) 1286 P.S.I. Final Hydrostatic Pressure (H) 1256 P.S.I.

Tool Open I.F.P. from 12:35 A m to 12:50 A m 15 min

from [B] <u>281</u> P.S.I. to [C] <u>283</u> P.S.I.
[D] <u>924</u> P.S.I.
from [E] <u>283</u> P.S.I. to [F] <u>284</u> P.S.I.
[G] <u>902</u> P.S.I.

Tool Closed I.C.I.P. from 12:50 A m to 1:20 P m 30 min

Tool Open F.F.P. from 1:20 P m to 1:35 P m 15 min

Tool Closed F.C.I.P. from 1:35 P m to 2:05 P m 30 min

Initial Blow Weak Surface Blow Built to 12 inches into Bucket in 15 min

Final Blow Weak Blow Died of in 203 minutes

Total Feet Recovered 360 feet Drilling mud Gravity of Oil _____ Corrected _____

60 Feet of Drilling mud % Gas _____ % Oil _____ % Mud _____ % Water _____

60 Feet of Drilling mud % Gas _____ % Oil _____ % Mud _____ % Water _____

240 Feet of Drilling mud % Gas _____ % Oil _____ % Mud _____ % Water _____

Feet of _____ % Gas _____ % Oil _____ % Mud _____ % Water _____

Feet of _____ % Gas _____ % Oil _____ % Mud _____ % Water _____

Feet of _____ % Gas _____ % Oil _____ % Mud _____ % Water _____

Feet of _____ % Gas _____ % Oil _____ % Mud _____ % Water _____

Feet of _____ % Gas _____ % Oil _____ % Mud _____ % Water _____

Remarks Slide Tool little 900 feet out TO 500 feet out cleared

Extra Equipment - Jars yes Safety Joint yes Extra Packer _____ Straddle _____ Hook Wall _____

Top Recorder No. 4023 Clock No. Electronica Depth 2656 Cir. Sub _____ Sampler _____

Bottom Recorder No. 3080 Clock No. 5744 Depth 2657 Insurance _____

Price of Job _____

Tool Operator Fred Zolt

Approved By _____

Superior Testers Enterprises, Inc. shall not be liable for damage of any kind to the property or personnel of the one for whom a test is made, of for any loss suffered or sustained, directly or indirectly, through the use of its equipment, or its statements or opinion concerning the results of any test. Tools lost or damaged in the hole shall be paid for at cost by the party for whom the test is made.

No 14518

SUPERIOR TESTERS ENTERPRISES INC.

1(800)792-6902

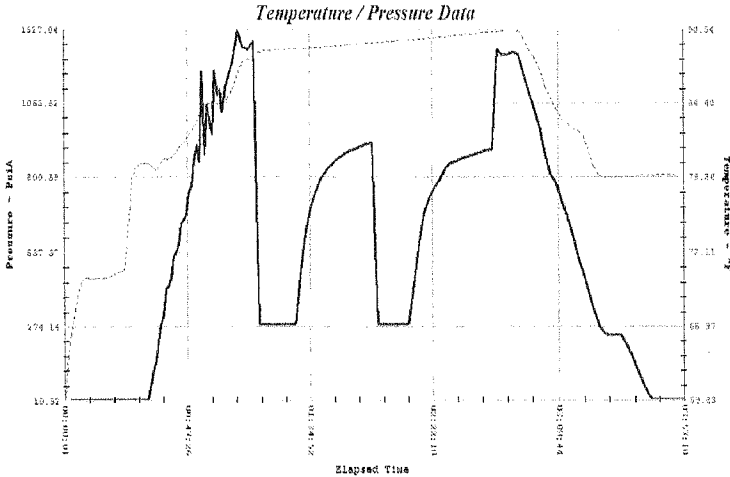
DRILL STEM TEST REPORT

GREAT BEND, KANSAS 67530

Company: F. G. HOLL COMPANY L.L.C

TWP. 20 RGE. 13

Lease & Well No. BOOTH 1-18 Test #: 3 Date: 4-5-06 SEC. 18



- 1 Initial Hydrostatic Pressure 1286
- 2 Initial Flow Pressure 281
- 3 Final Initial Flow Pressure 283
- 4 Initial Shut-In Pressure 924
- 5 Initial Final Flow Pressure 283
- 6 Final Flow Pressure 284
- 7 Final Shut-In Pressure 902
- 8 Final Hydrostatic Pressure 1256

Maximum Temperature 90

GENERAL INFORMATION

COMPANY NAME F. G. HOLL COMPANY L.L.C	
TEST DATE 4/5/06	LEASE AND WELL NUMBER BOOTH 1 -18
SECTION-TOWN-RANGE 18-20-13W	FORMATION TESTED WILMORE
STATE KANSAS	DRILL STEM TEST NUMBER 3
COUNTY BARTON	REPORT NUMBER 14518
ELEVATION GROUND LEVEL 1897	ELEVATION KELLY BUSHINGS 1905
COMPANY REPRESENTATIVE BILL REE	TESTING ENGINEER JARED L. SCHECK

TOOL SETTING INFORMATION

TEST INTERVAL (From) 2610	TOP PACKER DEPTH 2605
TEST INTERVAL (to) 2660	BOTTOM PACKER DEPTH 2610
ANCHOR LENGTH 50	NUMBER OF PACKERS 2
TOTAL DEPTH (ft) 2660	PACKER SIZE 6 3/4
	HOLE SIZE 7 7/8

FLOW TIMES

TOOL OPEN (from) 12:35A	TOOL OPEN (from) 1:35
INITIAL OPEN TOOL OPEN (to) 12:50	FINAL OPEN TOOL OPEN (to) 1:35
DURATION (min.) 15	DURATION (min.) 15
TOOL CLOSED (from) 12:50	TOOL CLOSED (from) 1:35
INITIAL SHUT-IN TOOL CLOSED (to) 1:20P	FINAL SHUT-IN TOOL CLOSED (to) 2:05
DURATION (min.) 30	DURATION (min.) 30

INITIAL FLOW WEAK BLOW BUILT TO 1/2 INCH INTO BUCKET IN 15 MIN

FINAL FLOW WEAK BLOW BIULT 1/2 INCH AND DIED OFF 3 MIN

FEET OF	RECOVERY	RECOVERY DESCRIPTION	%	%	%	%
Recovery			GAS	OIL	MUD	WATER
1) 60		DRILLING MUD				
2) 60		DRILLING MUD				
3) 240		DRILLING MUD				
4)						
5)						

SUPERIOR TESTERS ENTERPRISES INC.
DRILL STEM TEST REPORT
GREAT BEND ,KANSAS 67530 (800)792-6902

GENERAL INFORMATION

COMPANY NAME	F .G HOLL COMPANY L.L.C	LEASE AND WELL NUMBER	BOOTH 1 -18
TEST DATE	4/5/06	FORMATION TESTED	WILMORE
SECTION-TOWN-RANGE	18-20-13W	DRILL STEM TEST NUMBER	3
STATE	KANSAS	REPORT NUMBER	14518
COUNTY	BARTON	ELEVATION KELLY BUSHINGS	1905
ELEVATION GROUND LEVEL	1897	TESTING ENGINEER	JARED L. SCHECK
COMPANY REPRESENTATIVE	BILL REE		

EXTRA EQUIPMENT

JARS	YES	EXTRA PACKER (3RD)	NO
SAFETY JOINT	YES	EXTRA PACKER (4TH)	NO
ELECTRONIC RECORDER	YES	STRADDLE	NO
CIRCULATING SUB	NO	HOOK WALL	NO
		SAMPLER	NO
	15 MILES ROUND TRIP FROM	GREAT BEND	
TOP RECORDER DEPTH	2656	BOTTOM RECORDER DEPTH	2657
RECORDER NUMBER	91981	RECORDER NUMBER	5463

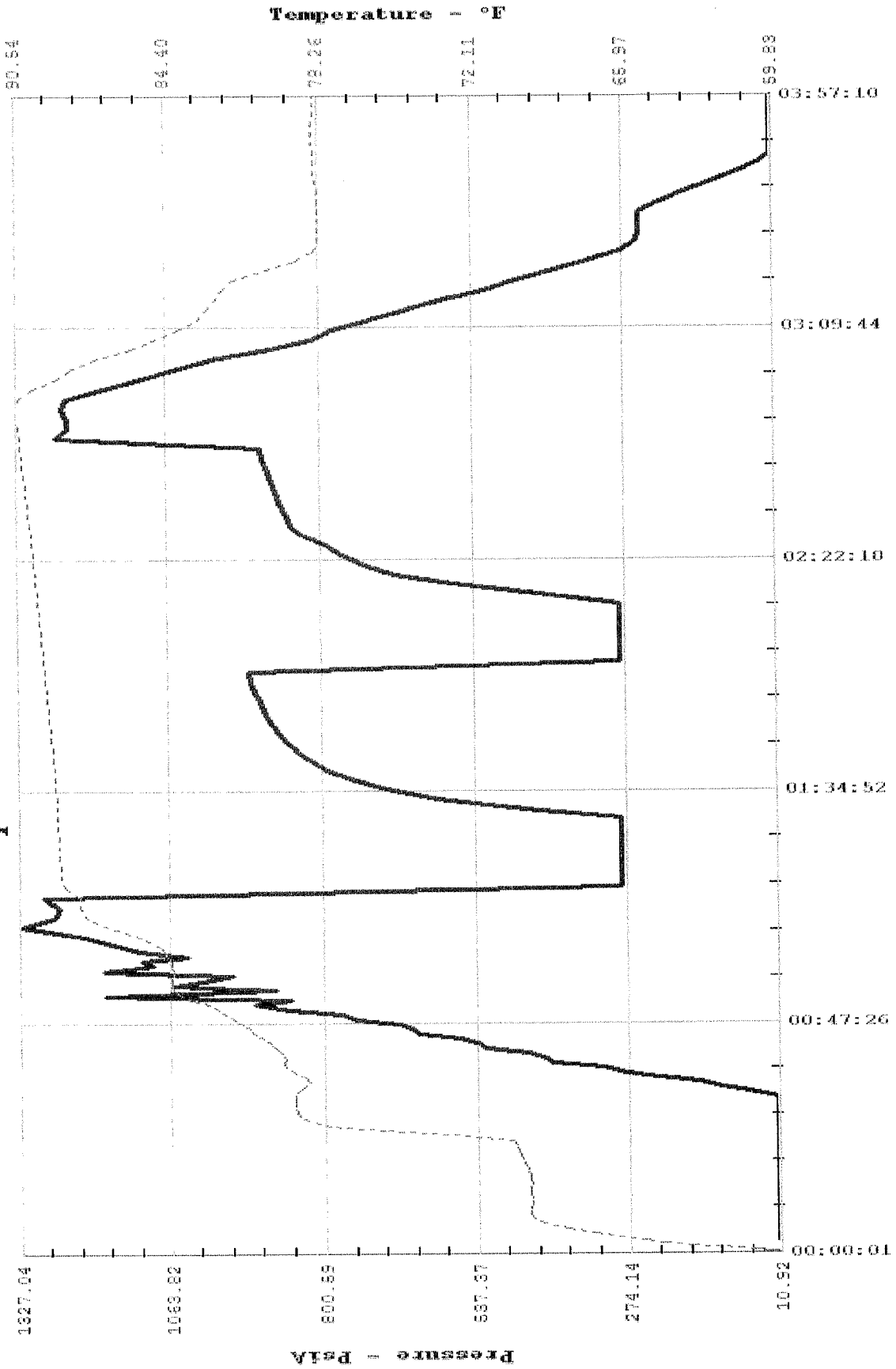
WELL INFORMATION

DRILLING CONTRACTOR	DUKE DRILLING COMPANY L.L.C	DRILL COLLAR LENGTH	
DRILL PIPE LENGTH	2584	DRILL COLLAR I.D.	2.25
DRILL PIPE I.D.	3.8	TOOL JOINT SIZE	4 1/2 X.H.
TOOL JOINT SIZE	4 1/2 X.H.		
WEIGHT PIPE LENGTH		MUD WEIGHT #/GAL	8.7
WEIGHT PIPE I.D.	2.25	VISCOSITY	50
TOOL JOINT SIZE	4 1/2 X.H.	WATER LOSS	7.2
CHLORIDES-PITS		CHLORIDES-DST	6,000
		RESISTIVITY-DST	@

COMMENTS

SLIDE TOOL 900 FEET OUT TO 500 FEET OUT THEN CLEARED UP

Temperature / Pressure Data



Superior Testers Enterprises, Inc.

R.R. 3, Box 295B, Great Bend, Kansas 67530

(316) 792-6902

Date 4-7-06 Location 18-20-13W Elevation 1896 County Barton

Company F. G. Hall Company Number of Copies 5

Charts Mailed to 9131 E Central St #100 Wichita KS 67206

Drilling Contractor Duke Drilling

Length Drill Pipe _____ I.D. Drill Pipe 3.8 Tool Joint Size 4 1/2 x H

Length Weight Pipe _____ I.D. Weight Pipe _____ Tool Joint Size _____

Length Drill Collars _____ I.D. Drill Collars _____ Tool Joint Size _____

Top Packer Depth 3290 Bottom Packer Depth 3295 Number of Packers _____ Packer Size 6 3/4

TESTED FROM 3295 TO 3370 ANCHOR LENGTH 75 TOTAL DEPTH 3370 Hole Size 7 7/8

LEASE & WELL NO. Booth 1-18 FORMATION TESTED Kansas City TEST NO. 4

Mud Weight 9.0 Viscosity 50 Water Loss 80 Chlorides - Pits 8.00 D.S.T. _____

Maximum Temp. 105 °F Initial Hydrostatic Pressure (A) 1649 P.S.I. Final Hydrostatic Pressure (H) 1635 P.S.I.

Tool Open I.F.P. from 1:12 am to 1:17 pm 5 min

Tool Closed I.C.I.P. from 1:17 am to 2:17 am 60 min

Tool Open F.F.P. from 2:17 am to 3:02 am 45 min

Tool Closed F.C.I.P. from 3:02 am to 4:32 m 90 min

from [B] 132 P.S.I. to [C] 151 P.S.I.
 [D] 1169 P.S.I.
 from [E] 161 P.S.I. to [F] 247 P.S.I.
 [G] 1154 P.S.I.

Initial Blow Strong Blow Barton Bucket less than 1 min

Final Blow Strong Blow Barton Bucket in less than 1 min Cast to surface

Total Feet Recovered 660 Gravity of Oil 35 Corrected

<u>60</u> Feet of <u>oil</u>	<u>60</u> % Gas	<u>100</u> % Oil			
<u>0</u> Feet of <u>oil</u>	<u>60</u> % Gas	<u>40</u> % Oil			
<u>0</u> Feet of <u>Gassey oil</u>	<u>40</u> % Gas	<u>60</u> % Oil			
<u>120</u> Feet of <u>Gassey oil</u>	<u>50</u> % Gas	<u>50</u> % Oil			
<u>300</u> Feet of <u>Gassey oil slightly cut mud</u>	<u>40</u> % Gas	<u>50</u> % Oil	<u>10</u> % Mud		
_____ Feet of _____	% Gas _____	% Oil _____	% Mud _____	% Water _____	
_____ Feet of _____	% Gas _____	% Oil _____	% Mud _____	% Water _____	
_____ Feet of _____	% Gas _____	% Oil _____	% Mud _____	% Water _____	
_____ Feet of _____	% Gas _____	% Oil _____	% Mud _____	% Water _____	

Remarks Cast to surface 2nd open

Extra Equipment - Jars Yes Safety Joint Yes Extra Packer _____ Straddle _____ Hook Wall _____

Top Recorder No. 4023 Clock No. Electronics Depth 3361e Cir. Sub _____ Sampler _____

Bottom Recorder No. 3088 Clock No. 47441 Depth 3361 Insurance _____

Price of Job _____

Tool Operator James White

Approved By _____

Superior Testers Enterprises, Inc. shall not be liable for damage of any kind to the property or personnel of the one for whom a test is made, or for any loss suffered or sustained, directly or indirectly, through the use of its equipment, or its statements or opinion concerning the results of any test. Tools lost or damaged in the hole shall be paid for at cost by the party for whom the test is made.

No **14519**

SUPERIOR TESTERS ENTERPRISES INC.

1(800)792-6902

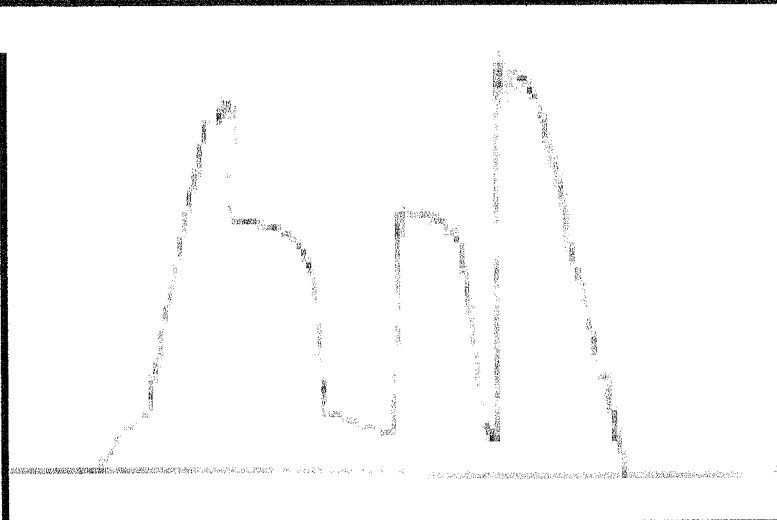
DRILL STEM TEST REPORT

GREAT BEND, KANSAS 67530

Company: F.G HOLL COMPANY L.L.C
TWP. 20 RGE. 13

Lease & Well No. BOOTH 1-18

Test #: 4 Date: 4-7-06 SEC. 18



- 1 Initial Hydrostatic Pressure 1649
 - 2 Initial Flow Pressure 132
 - 3 Final Initial Flow Pressure 137
 - 4 Initial Shut-In Pressure 1169
 - 5 Initial Final Flow Pressure 161
 - 6 Final Flow Pressure 247
 - 7 Final Shut-In Pressure 1154
 - 8 Final Hydrostatic Pressure 1635
- Maximum Temperature 105

GENERAL INFORMATION

COMPANY NAME F.G HOLL COMPANY L.L.C	
TEST DATE 4/7/06	LEASE AND WELL NUMBER BOOTH 1-18
SECTION-TOWN-RANGE 18-20-13W	FORMATION TESTED KANSAS CITY
STATE KANSAS	DRILL STEM TEST NUMBER 4
COUNTY BARTON	REPORT NUMBER 14519
ELEVATION GROUND LEVEL 1896	ELEVATION KELLY BUSHINGS 1904
COMPANY REPRESENTATIVE BILL REE	TESTING ENGINEER JARED L. SCHECK

TOOL SETTING INFORMATION

TEST INTERVAL (From) 3295	TOP PACKER DEPTH 3290
TEST INTERVAL (to) 3370	BOTTOM PACKER DEPTH 3295
ANCHOR LENGTH 75	NUMBER OF PACKERS 2
TOTAL DEPTH (ft) 3370	PACKER SIZE 6 3/4
	HOLE SIZE 7 7/8

FLOW TIMES

TOOL OPEN (from) 1:12	TOOL OPEN (from) 2:17
<i>INITIAL OPEN</i> TOOL OPEN (to) 1:17	<i>FINAL OPEN</i> TOOL OPEN (to) 3:02
DURATION (min.) 5	DURATION (min.) 45
TOOL CLOSED (from) 1:17	TOOL CLOSED (from) 3:02
<i>INITIAL SHUT-IN</i> TOOL CLOSED (to) 2:17	<i>FINAL SHUT-IN</i> TOOL CLOSED (to) 4:32
DURATION (min.) 60	DURATION (min.) 90

INITIAL FLOW **STRONG BLOW BOTTOM OF BUCKET IN 1 MIN**

FINAL FLOW **STRONG BLOW BOTTOM OF BUCKET IN 1 MIN GAS TO SUFACE**

FEET OF	RECOVERY	RECOVERY DESCRIPTION	%	%	%	%
Recovery			GAS	OIL	MUD	WATER
1) 60		GASSEY OIL		100		
2) 60		GASSEY OIL	60	40		
3) 120		GASSEY OIL	40	60		
4) 120		GASSEY OIL	50	50		
5) 300		GASSEY OIL SLIGHLEY MUD CUT	40	50	10	

SUPERIOR TESTERS ENTERPRISES INC.

DRILL STEM TEST REPORT

GREAT BEND ,KANSAS 67530 (800)792-6902

GENERAL INFORMATION

COMPANY NAME	F.G HOLL COMPANY L.L.C	LEASE AND WELL NUMBER	BOOTH 1-18
TEST DATE	4/7/06	FORMATION TESTED	KANSAS CITY
SECTION-TOWN-RANGE	18-20-13W	DRILL STEM TEST NUMBER	4
STATE	KANSAS	REPORT NUMBER	14519
COUNTY	BARTON	ELEVATION KELLY BUSHINGS	1904
ELEVATION GROUND LEVEL	1896	TESTING ENGINEER	JARED L. SCHECK
COMPANY REPRESENTATIVE	BILL REE		

EXTRA EQUIPMENT

JARS	YES	EXTRA PACKER (3RD)	NO
SAFETY JOINT	YES	EXTRA PACKER (4TH)	NO
ELECTRONIC RECORDER	YES	STRADDLE	NO
CIRCULATING SUB	NO	HOOK WALL	NO
		SAMPLER	NO
	15 MILES ROUND TRIP FROM	GREAT BEND	
TOP RECORDER DEPTH	3366	BOTTOM RECORDER DEPTH	3367
RECORDER NUMBER	91981	RECORDER NUMBER	5463

WELL INFORMATION

DRILLING CONTRACTOR	DUKE DRILLING COMPANY RID #8		
DRILL PIPE LENGTH		DRILL COLLAR LENGTH	
DRILL PIPE I.D.	3.8	DRILL COLLAR I.D.	2.25
TOOL JOINT SIZE	4 1/2 X.H.	TOOL JOINT SIZE	4 1/2 X.H.
WEIGHT PIPE LENGTH		MUD WEIGHT #/GAL	9
WEIGHT PIPE I.D.	2.25	VISCOSITY	50
TOOL JOINT SIZE	4 1/2 X.H.	WATER LOSS	8
CHLORIDES-PITS		CHLORIDES-DST	8,200
		RESISTIVITY-DST	@

COMMENTS

SUPERIOR TESTERS ENTERPRISES INC.

GREAT BEND, KANSAS

GAS FLOW RATE

(800) 792-6902

#

STATE..... KANSAS

Test Date 1/0/1900

COUNTY..... BARTON

Sec Town Range 18-20-13W

FIELD.....

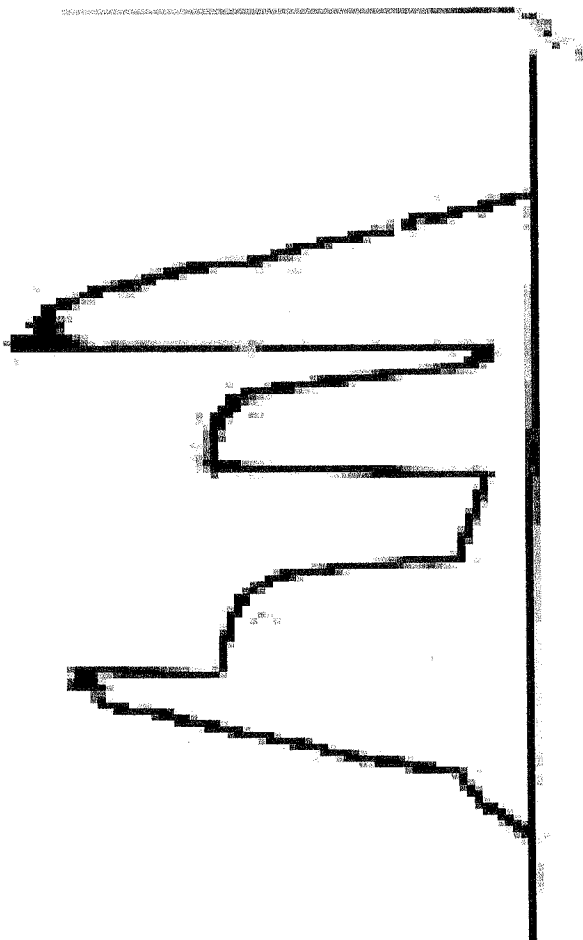
Report Number 14519

Initial Flow

Comments	Time (hh:mm:ss)	Period dt (min)	Inches H2O Orifice Tester	PSI on Orifice Tester	PSI on Pitot Tube	Choke Size (in)	Gas Rate (MCF/Day)

Final Flow

Comments	Time (hh:mm:ss)	Period dt (min)	Inches H2O Orifice Tester	PSI on Orifice Tester	PSI on Pitot Tube	Choke Size (in)	Gas Rate (MCF/Day)
OPEN TOOL AT	2:27	10	38			1/4	10.900
2:17	2:37	10	50			1/4	11.900
	2:47	10	30			1/4	9.200
	2:57	10	18			1/4	7.120
GAS SAMPLE WAS TAKEN							



F.G HOLL COMPANY L.L.C BOOTH 1-18 18-20-13W 4-7-06

Superior Testers Enterprises, Inc.

R.R. 3, Box 295B, Great Bend, Kansas 67530

(316) 792-6902

Date 4-7-06 Location 18-20-13W Elevation 1894 County Barton

Company F.G. Holl Company LLC Number of Copies 5

Charts Mailed to 9431 E Central St #100 Wichita KS 67206

Drilling Contractor Duke Drilling Company Rig #8

Length Drill Pipe _____ I.D. Drill Pipe _____ Tool Joint Size 4 1/2 XH

Length Weight Pipe _____ I.D. Weight Pipe _____ Tool Joint Size _____

Length Drill Collars _____ I.D. Drill Collars _____ Tool Joint Size _____

Top Packer Depth 3445 Bottom Packer Depth 3450 Number of Packers 2 Packer Size 6 3/4

TESTED FROM 3450 to 3512 ANCHOR LENGTH 62 TOTAL DEPTH 3512 Hole Size 7 1/8

LEASE & WELL NO. Bath 1-18 FORMATION TESTED Airbuckle TEST NO. 5

Mud Weight 9.3 Viscosity 49 Water Loss 80 Chlorides - Pits 5,500 D.S.T. _____

Maximum Temp. 106 °F Initial Hydrostatic Pressure (A) 1706 P.S.I. Final Hydrostatic Pressure (H) 1704 P.S.I.

Tool Open I.F.P. from 1:47 A m to 1:52 A m 5 min

from [B] <u>208</u> P.S.I. to [C] <u>118</u> P.S.I.
[D] <u>961</u> P.S.I.
from [E] <u>133</u> P.S.I. to [F] <u>102</u> P.S.I.
[G] <u>921</u> P.S.I.

Tool Closed I.C.I.P. from 1:52 m to 2:52 m 60 min

Tool Open F.F.P. from 2:52 m to 3:22 m 30 min

Tool Closed F.C.I.P. from 3:22 m to 4:22 m 60 min

Initial Blow Strong Blow Bottom Bucket less than 1 min Gas to surface

Final Blow Strong Blow Bottom Bucket less than 1 min

Total Feet Recovered 130 Gravity of Oil _____ Corrected _____

<u>130</u> Feet of	<u>Dassy Drilling mud</u>	% Gas	% Oil	% Mud	% Water
_____ Feet of	_____	% Gas	% Oil	% Mud	% Water
_____ Feet of	_____	% Gas	% Oil	% Mud	% Water
_____ Feet of	_____	% Gas	% Oil	% Mud	% Water
_____ Feet of	_____	% Gas	% Oil	% Mud	% Water
_____ Feet of	_____	% Gas	% Oil	% Mud	% Water
_____ Feet of	_____	% Gas	% Oil	% Mud	% Water
_____ Feet of	_____	% Gas	% Oil	% Mud	% Water
_____ Feet of	_____	% Gas	% Oil	% Mud	% Water

Remarks Gas to surface 1st open does light

Extra Equipment - Jars _____ Safety Joint _____ Extra Packer _____ Straddle _____ Hook Wall _____

Top Recorder No. 4023 Clock No. Electronic Depth 3508 Cir. Sub _____ Sampler _____

Bottom Recorder No. 3086 Clock No. 47441 Depth 3509 Insurance _____

Price of Job _____

Tool Operator J. B. B.

Approved By _____

Superior Testers Enterprises, Inc. shall not be liable for damage of any kind to the property or personnel of the one for whom a test is made, of for any loss suffered or sustained, directly or indirectly, through the use of its equipment, or its statements or opinion concerning the results of any test. Tools lost or damaged in the hole shall be paid for at cost by the party for whom the test is made.

№ 14520

SUPERIOR TESTERS ENTERPRISES INC.

1(800)792-6902

DRILL STEM TEST REPORT

GREAT BEND, KANSAS 67530

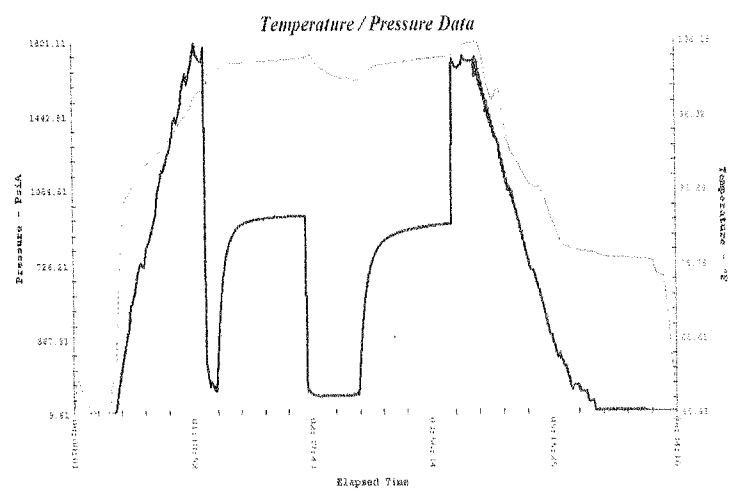
Company: F.G HOLL COMPANY L.L.C

RGE. 13

Lease & Well No. BOOTH 1-18

Test #: 5 Date: 4-7-06

SEC. 18 TWP. 20



1	Initial Hydrostatic Pressure	1706
2	Initial Flow Pressure	208
3	Final Initial Flow Pressure	118
4	Initial Shut-In Pressure	961
5	Initial Final Flow Pressure	133
6	Final Flow Pressure	102
7	Final Shut-In Pressure	921
8	Final Hydrostatic Pressure	1704
	Maximum Temperature	106

GENERAL INFORMATION

COMPANY NAME F G HOLL COMPANY L.L.C	
TEST DATE 4/7/06	LEASE AND WELL NUMBER BOOTH 1-18
SECTION-TOWN-RANGE 18-20-13W	FORMATION TESTED ARBUCKLE
STATE KANSAS	DRILL STEM TEST NUMBER 5
COUNTY BARTON	REPORT NUMBER 14520
ELEVATION GROUND LEVEL 1896	ELEVATION KELLY BUSHINGS 1905
COMPANY REPRESENTATIVE BILL REE	TESTING ENGINEER JARED L. SCHECK

TOOL SETTING INFORMATION

TEST INTERVAL (From) 3450	TOP PACKER DEPTH 3445
TEST INTERVAL (to) 3512	BOTTOM PACKER DEPTH 3450
ANCHOR LENGTH 62	NUMBER OF PACKERS 2
TOTAL DEPTH (ft) 3512	PACKER SIZE 6 3/4
	HOLE SIZE 7 7/8

FLOW TIMES

TOOL OPEN (from) 1:47A	TOOL OPEN (from) 2:52
INITIAL OPEN TOOL OPEN (to) 1:52	FINAL OPEN TOOL OPEN (to) 3:22
DURATION (min.) 5	DURATION (min.) 30
TOOL CLOSED (from) 1:52	TOOL CLOSED (from) 3:22
INITIAL SHUT-IN TOOL CLOSED (to) 2:52	FINAL SHUT-IN TOOL CLOSED (to) 4:22
DURATION (min.) 60	DURATION (min.) 60

INITIAL FLOW **STRONG BLOW BOTTOM OF BUCKET IN 1 MIN GAS TO SURFACE DOES LIGHT**

FINAL FLOW **GAS TO SURFACE**

FEET OF Recovery	RECOVERY DESCRIPTION	%	%	%	%
		GAS	OIL	MUD	WATER
1) 130	GASSEY DRILLING MUD				
2)					
3)					
4)					
5)					
6)					

SUPERIOR TESTERS ENTERPRISES INC.

DRILL STEM TEST REPORT

GREAT BEND ,KANSAS 67530 (800)792-6902

GENERAL INFORMATION

COMPANY NAME	FG HOLL COMPANY L.L.C	LEASE AND WELL NUMBER	BOOTH 1-18
TEST DATE	4/7/06	FORMATION TESTED	ARBUCKLE
SECTION-TOWN-RANGE	18-20-13W	DRILL STEM TEST NUMBER	5
STATE	KANSAS	REPORT NUMBER	14520
COUNTY	BARTON	ELEVATION KELLY BUSHINGS	1905
ELEVATION GROUND LEVEL	1896	TESTING ENGINEER	JARED L. SCHECK
COMPANY REPRESENTATIVE	BILL REE		

EXTRA EQUIPMENT

JARS	NO	EXTRA PACKER (3RD)	NO
SAFETY JOINT	NO	EXTRA PACKER (4TH)	NO
ELECTRONIC RECORDER	YES	STRADDLE	NO
CIRCULATING SUB	NO	HOOK WALL	NO
		SAMPLER	NO
	15 MILES ROUND TRIP FROM		GREAT BEND
TOP RECORDER DEPTH	3508	BOTTOM RECORDER DEPTH	3509
RECORDER NUMBER	91981	RECORDER NUMBER	5463

WELL INFORMATION

DRILLING CONTRACTOR	DUKE DRILLING COMPANY RIG #8		
DRILL PIPE LENGTH		DRILL COLLAR LENGTH	
DRILL PIPE I.D.	3.8	DRILL COLLAR I.D.	2.25
TOOL JOINT SIZE	4 1/2 X.H.	TOOL JOINT SIZE	4 1/2 X.H.
WEIGHT PIPE LENGTH		MUD WEIGHT #/GAL	9.3
WEIGHT PIPE I.D.	2.25	VISCOSITY	49
TOOL JOINT SIZE	4 1/2 X.H.	WATER LOSS	8
CHLORIDES-PITS		CHLORIDES-DST	5,500
		RESISTIVITY-DST	@

COMMENTS

GAS TO SURFACE DOES LIGHT

SUPERIOR TESTERS ENTERPRISES INC.

GREAT BEND, KANSAS

GAS FLOW RATE

(800) 792-6902

#

STATE.....	KANSAS	Test Date	1/0/1900
COUNTY.....	BARTON	Sec Town Range	18-20-13W
FIELD.....		Report Number	14520

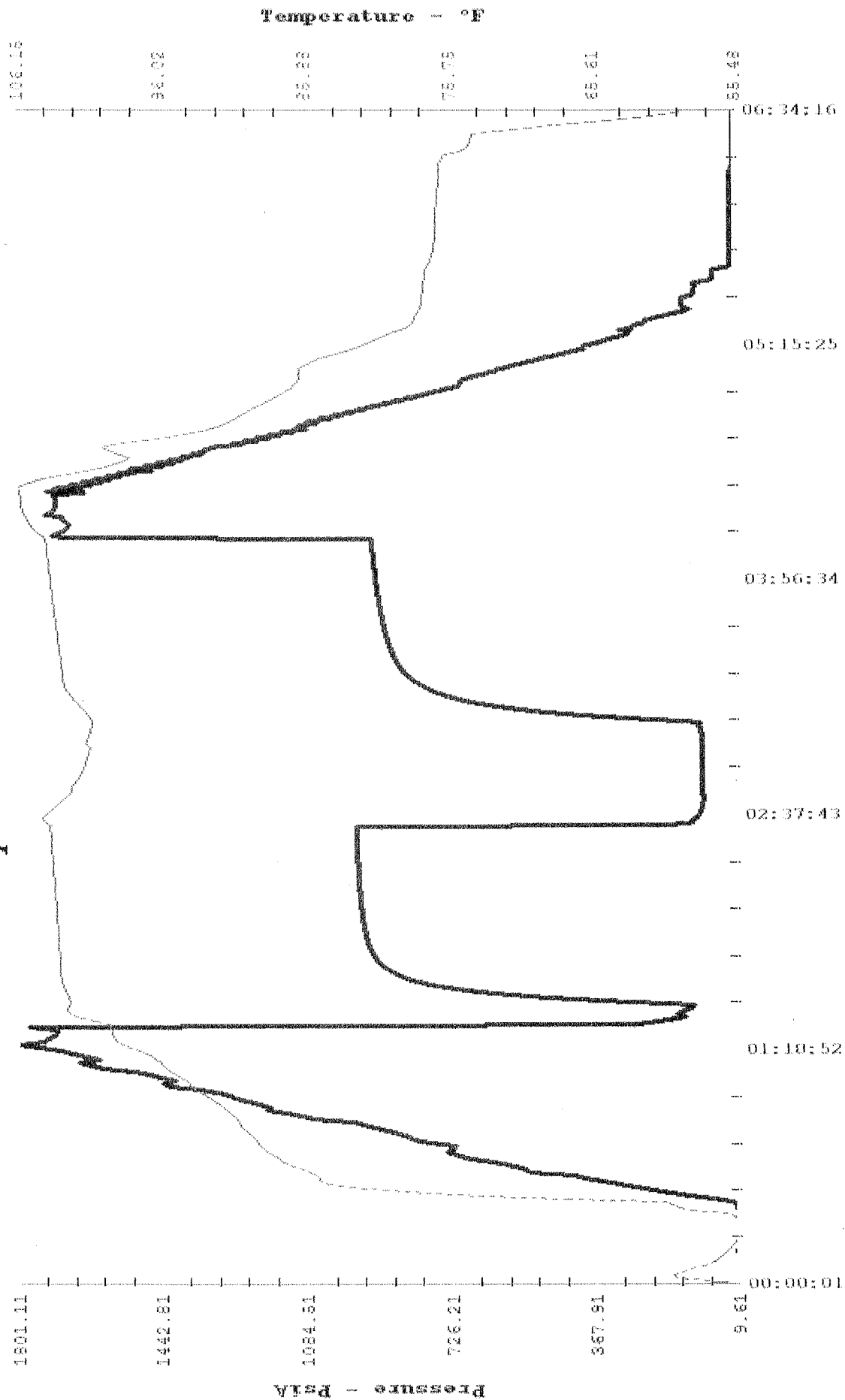
Initial Flow

Comments	Time (hh:mm:ss)	Period dt (min)	Inches H2O Orifice Tester	PSI on Orifice Tester	PSI on Pitot Tube	Choke Size (in)	Gas Rate (MCF/Day)
GAS TO SURFACE DOES LIGHT							

Final Flow

Comments	Time (hh:mm:ss)	Period dt (min)	Inches H2O Orifice Tester	PSI on Orifice Tester	PSI on Pitot Tube	Choke Size (in)	Gas Rate (MCF/Day)
OPEN TOOL							
2:52	3:02	10		5		3/4	175.000
	3:12	10		5		3/4	175.000
	3:22	10		5		3/4	175.000

Temperature / Pressure Data



Elapsed Time

Superior Testers Enterprises, Inc.

R.R. 3, Box 295B, Great Bend, Kansas 67530

(316) 792-6902

Date 4-8-06 Location 18-20-13W Elevation 1896 County Barton

Company K.G. Holl Company LLC Number of Copies 5

Charts Mailed to 9431 E Central St #100 Wichita KS 67206

Drilling Contractor Duke Drilling Rig #8

Length Drill Pipe 3497 I.D. Drill Pipe 3.8 Tool Joint Size 4 1/2 XH

Length Weight Pipe _____ I.D. Weight Pipe _____ Tool Joint Size _____

Length Drill Collars _____ I.D. Drill Collars _____ Tool Joint Size _____

Top Packer Depth 3507 Bottom Packer Depth 3512 Number of Packers 2 Packer Size 6 3/4

TESTED FROM 3512 TO 3532 ANCHOR LENGTH 20 TOTAL DEPTH 3532 Hole Size 7 7/8

LEASE & WELL NO. Booth 1-18 FORMATION TESTED Arbuckle TEST NO. 6

Mud Weight 9.1 Viscosity 68 Water Loss 8.0 Chlorides - Pits SEED D.S.T. _____

Maximum Temp. 104 °F Initial Hydrostatic Pressure (A) 1750 P.S.I. Final Hydrostatic Pressure (H) 1675 P.S.I.

Tool Open I.F.P. from 4:32 p m to 4:37 p m 5 min

Tool Closed I.C.I.P. from 4:37 p m to 5:37 p m 60 min

Tool Open F.F.P. from 5:37 p m to _____ m _____ min

Tool Closed F.C.I.P. from _____ m to _____ m _____ min

from [B] <u>83</u> P.S.I. to [C] <u>71</u> P.S.I.
[D] <u>971</u> P.S.I.
from [E] <u>76</u> P.S.I. to [F] <u>80</u> P.S.I.
[G] <u>936</u> P.S.I.

Initial Blow Strong Blow Bottom Bucket less than 1 min Gas to surface

Final Blow Strong Blow Bottom Bucket less than 1 min

Total Feet Recovered 90 Gravity of Oil _____ Corrected

90 Feet of Drilling mud %Gas _____ %Oil _____ %Mud _____ %Water _____

_____ Feet of _____ %Gas _____ %Oil _____ %Mud _____ %Water _____

_____ Feet of _____ %Gas _____ %Oil _____ %Mud _____ %Water _____

_____ Feet of _____ %Gas _____ %Oil _____ %Mud _____ %Water _____

_____ Feet of _____ %Gas _____ %Oil _____ %Mud _____ %Water _____

_____ Feet of _____ %Gas _____ %Oil _____ %Mud _____ %Water _____

_____ Feet of _____ %Gas _____ %Oil _____ %Mud _____ %Water _____

_____ Feet of _____ %Gas _____ %Oil _____ %Mud _____ %Water _____

_____ Feet of _____ %Gas _____ %Oil _____ %Mud _____ %Water _____

_____ Feet of _____ %Gas _____ %Oil _____ %Mud _____ %Water _____

Remarks _____

Extra Equipment - Jars _____ Safety Joint _____ Extra Packer _____ Straddle _____ Hook Wall _____

Top Recorder No. 4023 Clock No. Electronia Depth 3528 Cir. Sub _____ Sampler _____

Bottom Recorder No. 3028 Clock No. 47441 Depth 3529 Insurance _____

Price of Job _____

Tool Operator [Signature]

Approved By _____

Superior Testers Enterprises, Inc. shall not be liable for damage of any kind to the property or personnel of the one for whom a test is made, of for any loss suffered or sustained, directly or indirectly, through the use of its equipment, or its statements or opinion concerning the results of any test. Tools lost or damaged in the hole shall be paid for at cost by the party for whom the test is made.

No 14521

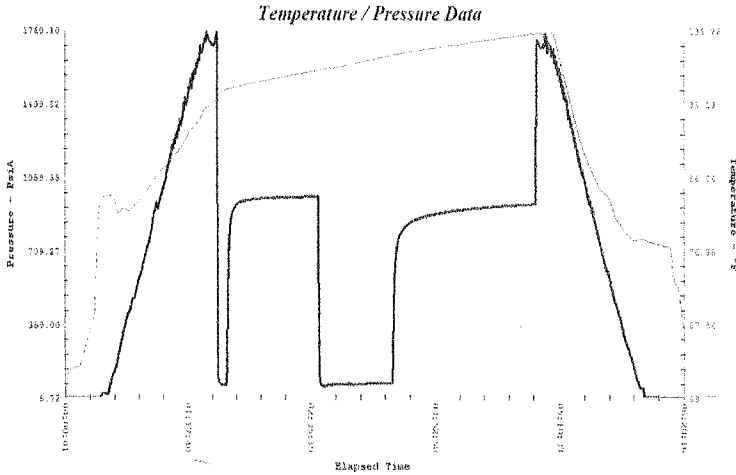
SUPERIOR TESTERS ENTERPRISES INC.

1(800)792-6902

DRILL STEM TEST REPORT

GREAT BEND, KANSAS 67530

Company: F.G HOLL COMPANY LLC
RGE. 13



1	Initial Hydrostatic Pressure	1756
2	Initial Flow Pressure	83
3	Final Initial Flow Pressure	71
4	Initial Shut-In Pressure	971
5	Initial Final Flow Pressure	76
6	Final Flow Pressure	80
7	Final Shut-In Pressure	936
8	Final Hydrostatic Pressure	1675

Maximum Temperature 104

GENERAL INFORMATION

COMPANY NAME F.G HOLL COMPANY L.L.C	
TEST DATE 4/8/06	LEASE AND WELL NUMBER BOOTH 1-18
SECTION-TOWN-RANGE 18-20-13W	FORMATION TESTED ARBUCKLE
STATE KANSAS	DRILL STEM TEST NUMBER 6
COUNTY BARTON	REPORT NUMBER 14521
ELEVATION GROUND LEVEL 1896	ELEVATION KELLY BUSHINGS 1905
COMPANY REPRESENTATIVE BILL REE	TESTING ENGINEER JARED L. SCHECK

TOOL SETTING INFORMATION

TEST INTERVAL (From) 3512	TOP PACKER DEPTH 3507
TEST INTERVAL (to) 3532	BOTTOM PACKER DEPTH 3512
ANCHOR LENGTH 20	NUMBER OF PACKERS 2
TOTAL DEPTH (ft) 3532	PACKER SIZE 6 3/4
	HOLE SIZE 7 7/8

FLOW TIMES

TOOL OPEN (from) 4:32P	TOOL OPEN (from) 5:37
INITIAL OPEN TOOL OPEN (to) 4:37	FINAL OPEN TOOL OPEN (to) 6:22
DURATION (min.) 5	DURATION (min.) 45
TOOL CLOSED (from) 4:37	TOOL CLOSED (from) 6:22
INITIAL SHUT-IN TOOL CLOSED (to) 5:37	FINAL SHUT-IN TOOL CLOSED (to) 7:52
DURATION (min.) 60	DURATION (min.) 90

INITIAL FLOW **STRONG BLOW BOTTOM OF BUCKET IN LESS THAN 1 MIN GAS TO SURFACE**

FINAL FLOW **STRONG BLOW BOTTOM OF BUCKET LESS THAN 1 MIN GAS TO SURFACE**

FEET OF	RECOVERY	RECOVERY DESCRIPTION	%	%	%	%
Recovery			GAS	OIL	MUD	WATER
1) 90		DRILLING MUD				
2)						
3)						
4)						
5)						
6)						

Lease & Well No. BOOTH 1-18

Test #: 6 Date: 4-08-06

SEC. 18 TWP. 20

SUPERIOR TESTERS ENTERPRISES INC.

GREAT BEND, KANSAS

GAS FLOW RATE

(800) 792-6902

#

STATE	KANSAS	Test Date	1/0/1900
COUNTY	BARTON	Sec Town Range	18-20-13W
FIELD		Report Number	14521

Initial Flow

Comments	Time (hh:mm:ss)	Period dt (min)	Inches H2O Orifice Tester	PSI on Orifice Tester	PSI on Pitot Tube	Choke Size (in)	Gas Rate (MCF/Day)
TOOL OPEN 4:32P							
GAS TO SURFACE							

Final Flow

Comments	Time (hh:mm:ss)	Period dt (min)	Inches H2O Orifice Tester	PSI on Orifice Tester	PSI on Pitot Tube	Choke Size (in)	Gas Rate (MCF/Day)
TOOL OPEN 5:37P	5:47	10		16		1/2	153.000
	5:57	10		17		1/2	156.000
	6:07	10		17		1/2	156.000
	6:17	10		17		1/2	156.000

Temperature / Pressure Data

