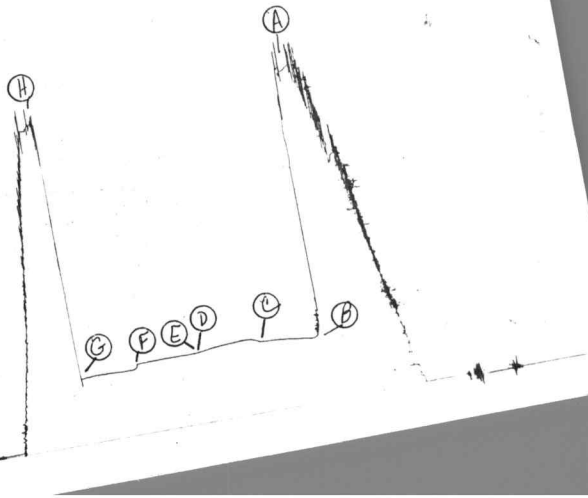


TKT # 2737

I

6233

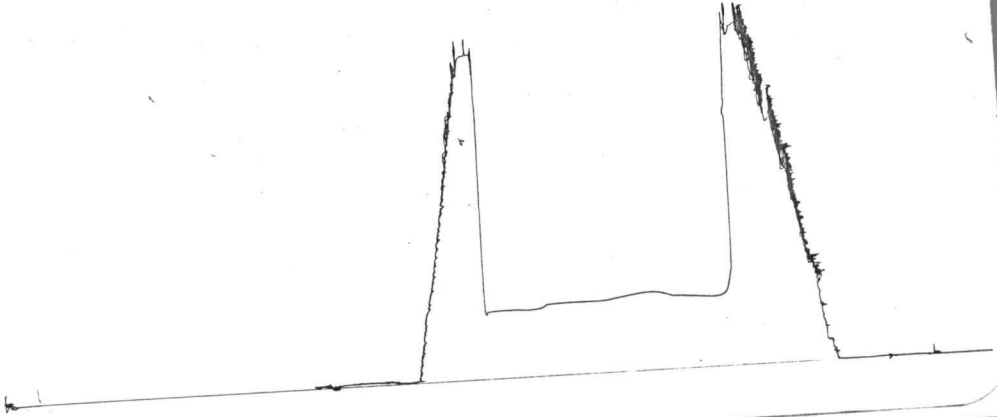


1340

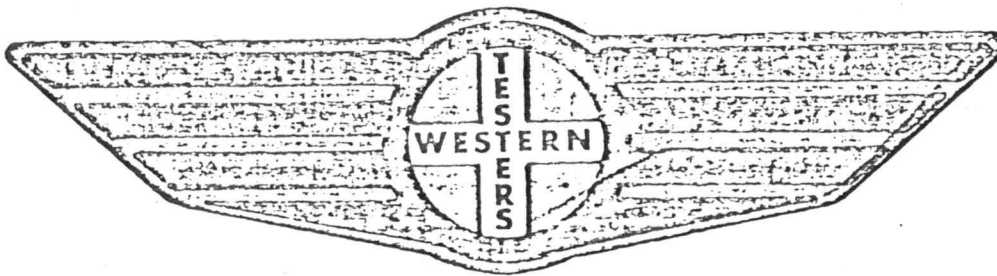
TKT #2737

0

7



# FORMATION TEST REPORT



Home Office:

Wichita, Kansas 67201

P.O. Box 1599

Phone (316) 262-5861

Company \_\_\_\_\_  
PETROLEUM ENERGY, INC.  
Lease and Well No. \_\_\_\_\_ #2 KLINEFELTER  
Sec. 13 Twp. 20S Rge. 9W  
Test No. 1 Date 2/1/84

WESTERN TESTING CO. INC.  
SUBSURFACE PRESSURE SURVEY

DATE: 2/1/84  
CUSTOMER: PETROLEUM ENERGY INC.  
WELL: 2 TEST: 1  
ELEVATION (KB): 1666 FORMATION: SIMPSON SAND  
SECTION: 13 TOWNSHIP: 20S  
RANGE: 9W COUNTY: RICE STATE: KANSAS  
GAUGE SN #6233 RANGE: 4000 CLOCK: 12

TICKET #2737  
LEASE: KLINEFELTER  
GEOLOGIST: ?

INTERVAL TEST FROM: 3383 FT TO: 3423 FT TOTAL DEPTH: 3423 FT  
DEPTH OF SELECTIVE ZONE: FT  
PACKER DEPTH: 3378 FT SIZE: 6 3/4 IN PAKER DEPTH: 3383 FT SIZE: 6 3/4 IN  
PACKER DEPTH: FT SIZE: IN PAKER DEPTH: FT SIZE: IN

DRILLING CONTRACTOR: WHITE & ELLIS DRLG  
MUD TYPE: STARCH VISCOSITY: 41  
WEIGHT: 9.5 WATER LOSS (CC): 9.6  
CHLORIDES (P.P.M.): 44000  
JARS - MAKE: NO SERIAL NUMBER:  
DID WELL FLOW? NO REVERSED OUT? NO  
DRILL COLLAR LENGTH: 298 FT I.D.: 2.25 IN  
WEIGHT PIPE LENGTH: FT I.D.: IN  
DRILL PIPE LENGTH: 3065 FT I.D.: 3.8 IN  
TEST TOOL LENGTH: 20 FT TOOL SIZE: 5 1/2 OD IN  
ANCHOR LENGTH: 40 FT SIZE: 5 1/2 OD IN  
SURFACE CHOKE SIZE: 3/4 IN BOTTOM CHOKE SIZE: 3/4 IN  
MAIN HOLE SIZE: 7 7/8 IN TOOL JOINT SIZE: 4 1/2 XH IN

BLOW: INITIAL FLOW PERIOD STRONG INCREASING BLOW.  
BOTTOM OF BUCKET ON OPENING.  
FINAL FLOW PERIOD NO BLOW.

RECOVERED: 725 FT OF: VERY THIN MUD. CHLORIDES 48000 PPM.  
RECOVERED: FT OF:  
RECOVERED: FT OF:  
RECOVERED: FT OF:  
RECOVERED: FT OF:  
RECOVERED: FT OF:  
RECOVERED: FT OF:  
RECOVERED: FT OF:  
RECOVERED: FT OF:

REMARKS:

TIME SET PACKER(S): 9:40 PM TIME STARTED OFF BOTTOM: 12:40 AM  
WELL TEMPERATURE: 109 °F  
INITIAL HYDROSTATIC PRESSURE: (A) 1733 PSI  
INITIAL FLOW PERIOD MIN: 45 (B) 342 PSI TO (C) 374 PSI  
INITIAL CLOSED IN PERIOD MIN: 45 (D) 377 PSI  
FINAL FLOW PERIOD MIN: 45 (E) 377 PSI TO (F) 373 PSI  
FINAL CLOSED IN PERIOD MIN: 45 (G) 348 PSI  
FINAL HYDROSTATIC PRESSURE (H) 1687 PSI

