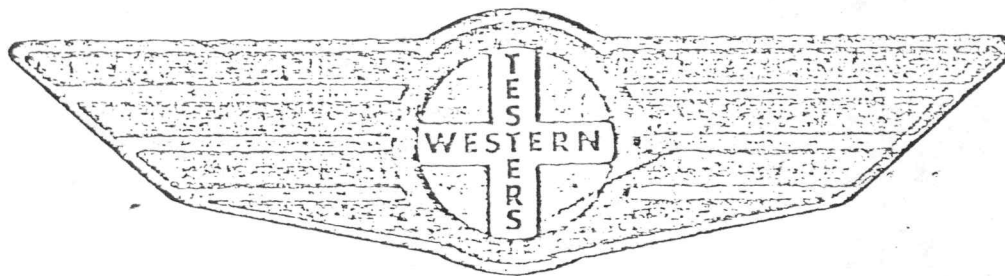


FORMATION

TEST

REPORT



Home Office:

Wichita, Kansas 67201

P.O. Box 1599

Phone (316) 262-5861

WESTERN TESTING COMPANY INC.
SUBSURFACE PRESSURE SURVEY

DATE: 7/30/84
CUSTOMER: EUWER PETROLEUM CORPORATION
WELL: #1 TEST: 1
ELEVATION (KB): 2714 FORMATION: MARMINGTON
SECTION: 14 TOWNSHIP: 20S
RANGE: 20W COUNTY: PAWNEE STATE: KANSAS
GAUGE SN #13762 RANGE: 3925 CLOCK: 12

INTERVAL TEST FROM: 4016 FT TO: 4070 FT TOTAL DEPTH: 4070 FT
DEPTH OF SELECTIVE ZONE: FT
PACKER DEPTH: 4011 FT SIZE: 6 3/4 IN PACKER DEPTH: 4016 FT SIZE: 6 3/4 IN
PACKER DEPTH: FT SIZE: IN PACKER DEPTH: FT SIZE: IN

DRILLING CONTRACTOR: BERGMAN
MUD TYPE: STARCH VISCOSITY: 42
WEIGHT: 9.6 WATER LOSS (CC): 9.6
CHLORIDES (P.P.M.): 40000
JARS - MAKE: SERIAL NUMBER:
DID WELL FLOW? REVERSED OUT?
DRILL COLLAR LENGTH: 29 FT I.D.: 2.25 IN
WEIGHT PIPE LENGTH: 563 FT I.D.: 2.7 IN
DRILL PIPE LENGTH: 3400 FT I.D.: 3.8 IN
TEST TOOL LENGTH: 24 FT TOOL SIZE: 5 1/2 O.D. IN
ANCHOR LENGTH: 54 FT SIZE: 5 1/2 O.D. IN
SURFACE CHOKE SIZE: 3/4 IN BOTTOM CHOKE SIZE: 3/4 IN
MAIN HOLE SIZE: 7 7/8 IN TOOL JOINT SIZE: 4 1/2 XH IN

BLOW: INITIAL FLOW PERIOD WEAK BLOW DEAD
IN 17 MINUTES. FINAL FLOW PERIOD
NO BLOW.

RECOVERED: 20 FT OF: MUD.
RECOVERED: FT OF:
RECOVERED: FT OF:
RECOVERED: FT OF:
RECOVERED: FT OF:
RECOVERED: FT OF:
RECOVERED: FT OF:
RECOVERED: FT OF:
RECOVERED: FT OF:
RECOVERED: FT OF:

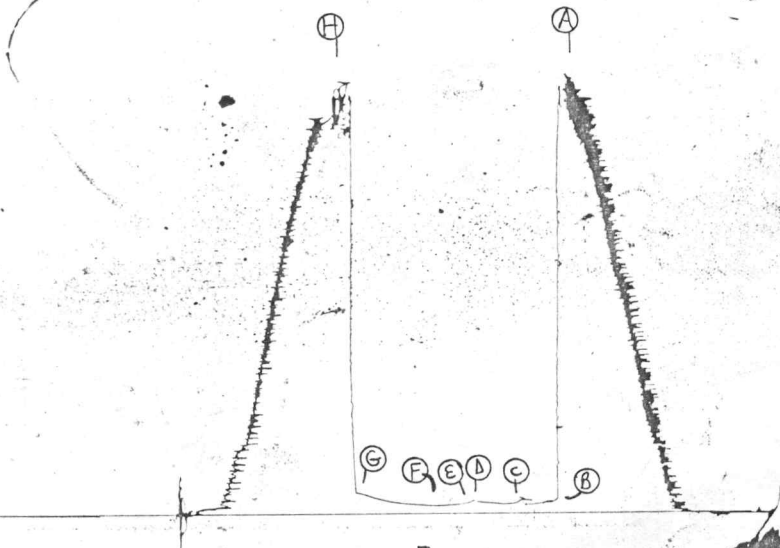
REMARKS: NO SHOW IN TOOL.
PLUGGING ACTION ON INITIAL FLOW PERIOD.

TIME SET PACKER(S): 9:55 P.M. TIME STARTED OFF BOTTOM: 11:25 P.M.
WELL TEMPERATURE: 101 °F
INITIAL HYDROSTATIC PRESSURE: (A) 2023 PSI
INITIAL FLOW PERIOD MIN: 30 (B) 57 PSI TO (C) 48 PSI
INITIAL CLOSED IN PERIOD MIN: 30 (D) 68 PSI
FINAL FLOW PERIOD MIN: 30 (E) 41 PSI TO (F) 41 PSI
FINAL CLOSED IN PERIOD MIN: 57 (G) 105 PSI
FINAL HYDROSTATIC PRESSURE (H) 1992 PSI

TKT # 5256

5254
13762

I

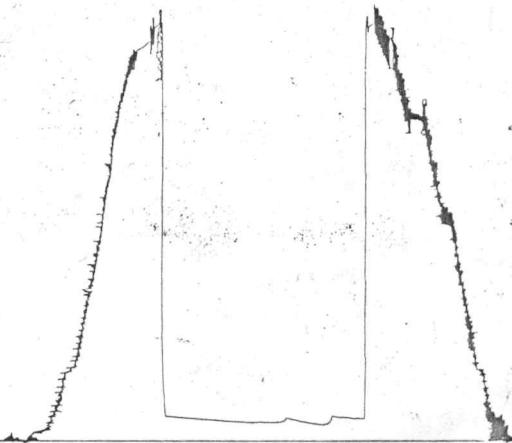


TKT # 5256

5259

13759

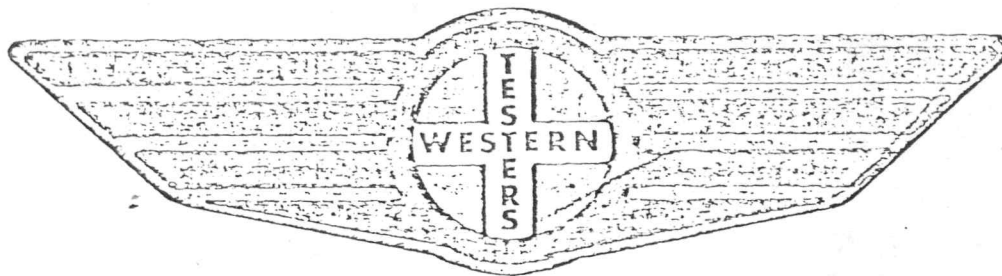
0



FORMATION

TEST

REPORT



Home Office:

Wichita, Kansas 67201

P.O. Box 1599

Phone (316) 262-5861

Company EUMER PETROLEUM COMPANY Lease and Well No. #1 NEELAND Sec. 14 Twp. 20S Rge. 20W Test No. 2 Date 7/31/84

WESTERN TESTING COMPANY INC.
SUBSURFACE PRESSURE SURVEY

DATE: 7/31/84
CUSTOMER: EUWER PETROLEUM CORPORATION
WELL: #1 TEST: 2
ELEVATION (KB): 2714 FORMATION: CHEROKEE SAND
SECTION: 14 TOWNSHIP: 20S
RANGE: 20W COUNTY: PAWNEE STATE: KANSAS
GAUGE SN #13762 RANGE: 3925 CLOCK: 12

INTERVAL TEST FROM: 4148 FT TO: 4180 FT TOTAL DEPTH: 4180 FT
DEPTH OF SELECTIVE ZONE: FT
PACKER DEPTH: 4143 FT SIZE: 6 3/4 IN PACKER DEPTH: 4148 FT SIZE: 6 3/4 IN
PACKER DEPTH: FT SIZE: IN PACKER DEPTH: FT SIZE: IN

DRILLING CONTRACTOR: BERGMAN
MUD TYPE: STARCH VISCOSITY: 46
WEIGHT: 9.6 WATER LOSS (CC): 9.6
CHLORIDES (P.P.M.): 42000
JARS - MAKE: SERIAL NUMBER:
DID WELL FLOW? REVERSED OUT?
DRILL COLLAR LENGTH: 29 FT I.D.: 2.25 IN
WEIGHT PIPE LENGTH: 593 FT I.D.: 2.7 IN
DRILL PIPE LENGTH: 3532 FT I.D.: 3.9 IN
TEST TOOL LENGTH: 24 FT TOOL SIZE: 5 1/2 O.D. IN
ANCHOR LENGTH: 32 FT SIZE: 5 1/2 O.D. IN
SURFACE CHOKE SIZE: 3/4 IN BOTTOM CHOKE SIZE: 3/4 IN
MAIN HOLE SIZE: 7 7/8 IN TOOL JOINT SIZE: 4 1/2 XH IN

BLOW:

RECOVERED: FT OF:
RECOVERED: FT OF:
RECOVERED: FT OF:
RECOVERED: FT OF:
RECOVERED: FT OF:
RECOVERED: FT OF:
RECOVERED: FT OF:
RECOVERED: FT OF:
RECOVERED: FT OF:
RECOVERED: FT OF:

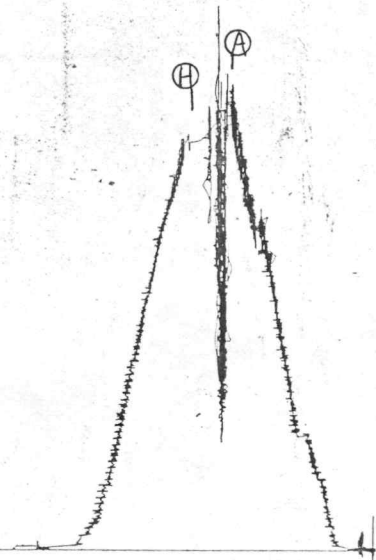
REMARKS: 20' FILL UP COULD NOT GET TO BOTTOM.

TIME SET PACKER(S): TIME STARTED OFF BOTTOM:
WELL TEMPERATURE: 0 °F
INITIAL HYDROSTATIC PRESSURE: (A) 2172 PSI
INITIAL FLOW PERIOD MIN: 0 (B) 0 PSI TO (C) 0 PSI
INITIAL CLOSED IN PERIOD MIN: 0 (D) 0 PSI
FINAL FLOW PERIOD MIN: 0 (E) 0 PSI TO (F) 0 PSI
FINAL CLOSED IN PERIOD MIN: 0 (G) 0 PSI
FINAL HYDROSTATIC PRESSURE (H) 2034 PSI

TKT # 5257

5257
13762

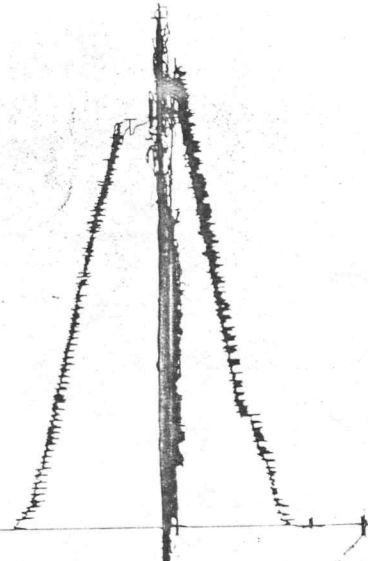
I



TKT # 5257

5257
13759

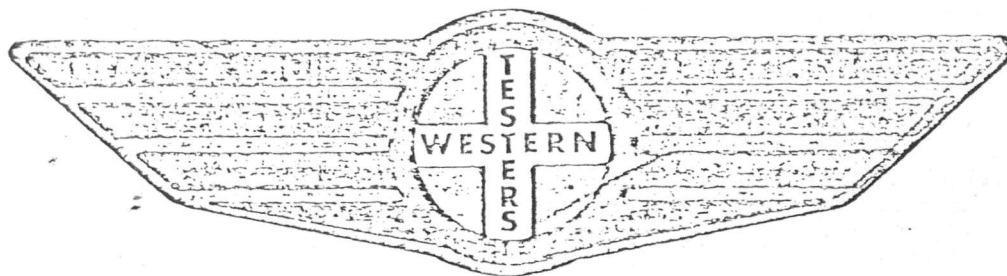
0



FORMATION

TEST

REPORT



Home Office:

Wichita, Kansas 67201

P.O. Box 1599

Phone (316) 262-5861

WESTERN TESTING COMPANY INC.
SUBSURFACE PRESSURE SURVEY

DATE: 8/1/84 TICKET #5258
 CUSTOMER: EUWER PETROLEUM CORPORATION LEASE: NEELAND
 WELL: #1 TEST: 3 GEOLOGIST: SLAGLE
 ELEVATION (KB): 2714 FORMATION: CHEROKEE SAND
 SECTION: 14 TOWNSHIP: 20S
 RANGE: 20W COUNTY: PAWNEE STATE: KANSAS
 GAUGE SN #13762 RANGE: 3925 CLOCK: 12

INTERVAL TEST FROM: 4148 FT TO: 4180 FT TOTAL DEPTH: 4180 FT
 DEPTH OF SELECTIVE ZONE: FT
 PACKER DEPTH: 4143 FT SIZE: 6 3/4 IN PACKER DEPTH: 4148 FT SIZE: 6 3/4 IN
 PACKER DEPTH: FT SIZE: IN PACKER DEPTH: FT SIZE: IN

DRILLING CONTRACTOR: BERGMAN
 MUD TYPE: STARCH VISCOSITY: 53
 WEIGHT: 9.6+ WATER LOSS (CC): 12.4
 CHLORIDES (P.P.M.): 42000
 JARS - MAKE: SERIAL NUMBER:
 DID WELL FLOW? REVERSED OUT?
 DRILL COLLAR LENGTH: FT I.D.: IN
 WEIGHT PIPE LENGTH: 533 FT I.D.: 2.7 IN
 DRILL PIPE LENGTH: 3591 FT I.D.: 3.8 IN
 TEST TOOL LENGTH: 24 FT TOOL SIZE: 5 1/2 O.D. IN
 ANCHOR LENGTH: 32 FT SIZE: 5 1/2 O.D. IN
 SURFACE CHOKE SIZE: 3/4 IN BOTTOM CHOKE SIZE: 3/4 IN
 MAIN HOLE SIZE: 7 7/8 IN TOOL JOINT SIZE: 4 1/2 XH IN

BLOW: INITIAL FLOW PERIOD STROGN BLOW OFF BOTTOM OF
 BUCKET IN 4 MINUTES BLEW THROUGHOUT.
 FINAL FLOW PERIOD STRONG BLOW OFF BOTTOM OF
 BUCKET IN 2 MINUTES; BLEW THROUGHOUT.

RECOVERED: 2728 FT OF: GAS ABOVE FLUID.
 RECOVERED: 1119 FT OF: FROTHY OIL.
 RECOVERED: FT OF:
 RECOVERED: FT OF: GRAVITY 41 @ 82 DEGREES CORRECTED.
 RECOVERED: FT OF:
 RECOVERED: FT OF:
 RECOVERED: FT OF:
 RECOVERED: FT OF:
 RECOVERED: FT OF:

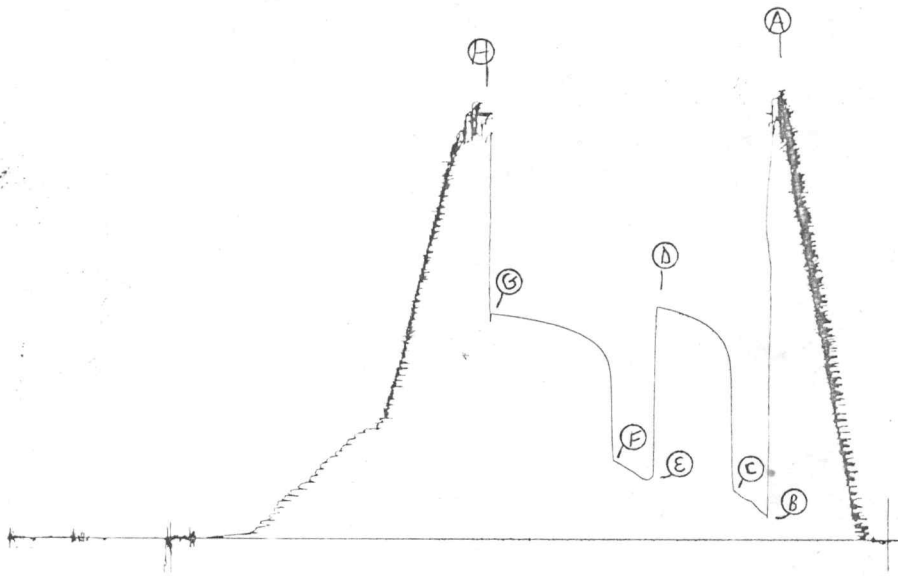
REMARKS:

TIME SET PACKER(S): 2:10 P.M. TIME STARTED OFF BOTTOM: 5:40 P.M.
 WELL TEMPERATURE: 102 °F
 INITIAL HYDROSTATIC PRESSURE: (A) 2205 PSI
 INITIAL FLOW PERIOD MIN: 25 (B) 122 PSI TO (C) 241 PSI
 INITIAL CLOSED IN PERIOD MIN: 57 (D) 1162 PSI
 FINAL FLOW PERIOD MIN: 30 (E) 296 PSI TO (F) 389 PSI
 FINAL CLOSED IN PERIOD MIN: 90 (G) 1127 PSI
 FINAL HYDROSTATIC PRESSURE (H) 2150 PSI

TKT # 5258

5258
13762

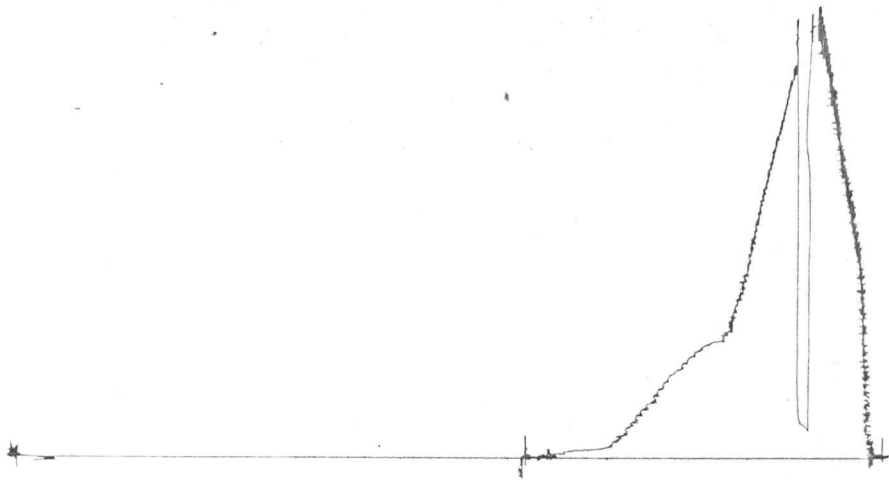
I



TKT # 5258

5258.
13759

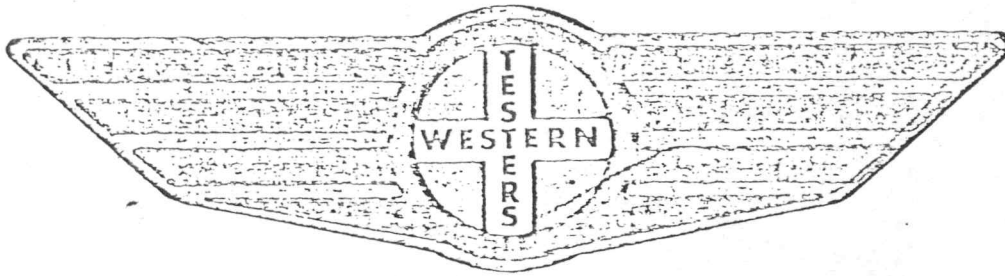
O.



FORMATION

TEST

REPORT



Home Office:

Wichita, Kansas 67201

P.O. Box 1599

Phone (316) 262-5861

WESTERN TESTING COMPANY INC.
SUBSURFACE PRESSURE SURVEY

DATE: 8/2/84) TICKET #5259
 CUSTOMER: EUWER PETROLEUM CORPORATION LEASE: NEELAND
 WELL: #1 TEST: 4 GEOLOGIST: SLAGLE
 ELEVATION (KB): 2714 FORMATION: CHEROKEE SAND
 SECTION: 14 TOWNSHIP: 20S
 RANGE: 20W COUNTY: PAWNEE STATE: KANSAS
 GAUGE SN #13762 RANGE: 3925 CLOCK: 12

INTERVAL TEST FROM: 4205 FT TO: 4220 FT TOTAL DEPTH: 4220 FT
 DEPTH OF SELECTIVE ZONE: FT
 PACKER DEPTH: 4200 FT SIZE: 6 3/4 IN PACKER DEPTH: 4205 FT SIZE: 6 3/4 IN
 PACKER DEPTH: FT SIZE: IN PACKER DEPTH: FT SIZE: IN

DRILLING CONTRACTOR: BERGMAN
 MUD TYPE: STARCH VISCOSITY: 46
 WEIGHT: 9.6 WATER LOSS (CC): 12.4
 CHLORIDES (P.P.M.): 42000
 JARS - MAKE: SERIAL NUMBER:
 DID WELL FLOW? REVERSED OUT?
 DRILL COLLAR LENGTH: FT I.D.: IN
 WEIGHT PIPE LENGTH: 533 FT I.D.: 2.7 IN
 DRILL PIPE LENGTH: 3648 FT I.D.: 3.8 IN
 TEST TOOL LENGTH: 24 FT TOOL SIZE: 5 1/2 O.D. IN
 ANCHOR LENGTH: 15 FT SIZE: 5 1/2 O.D. IN
 SURFACE CHOKE SIZE: 3/4 IN BOTTOM CHOKE SIZE: 3/4 IN
 MAIN HOLE SIZE: 7 7/8 IN TOOL JOINT SIZE: 4 1/2 XH IN

BLOW: INITIAL FLOW PERIOD STRONG OFF BOTTOM OF
 BUCKET IN 7 MINUTES; BLEW THROUGHOUT.
 FINAL FLOW PERIOD STRONG BLOW OFF BOTTOM
 OF BUCKET ON OPENING; BLEW THROUGHOUT.

RECOVERED: 780 FT OF: GAS ABOVE FLUID.
 RECOVERED: 915 FT OF: FROTHY OIL. GRAVITY 30 @ 86 DEGREES CORRECTED
 RECOVERED: FT OF:
 RECOVERED: FT OF:
 RECOVERED: FT OF:
 RECOVERED: FT OF:
 RECOVERED: FT OF:
 RECOVERED: FT OF:
 RECOVERED: FT OF:
 RECOVERED: FT OF:

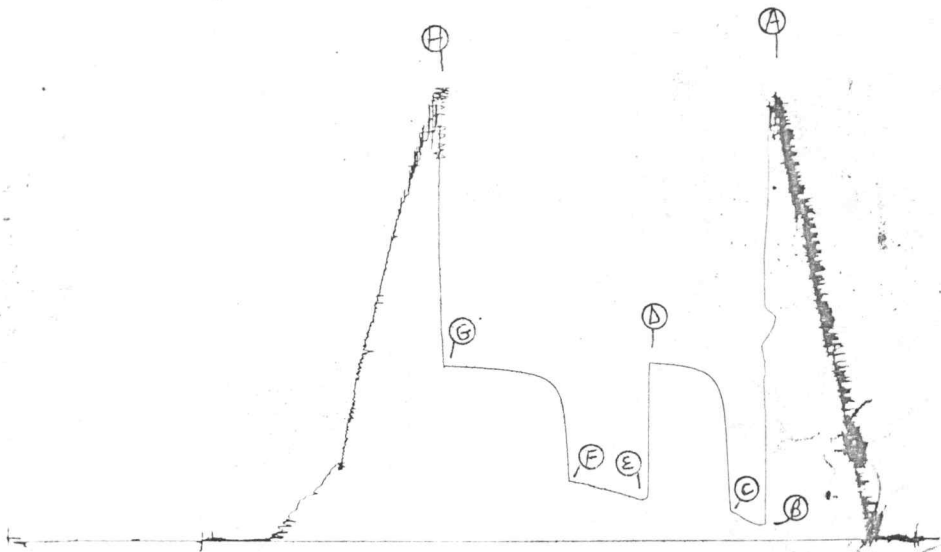
REMARKS:

TIME SET PACKER(S): 11:55 P.M. TIME STARTED OFF BOTTOM: 3:55 A.M.
 WELL TEMPERATURE: 108 °F
 INITIAL HYDROSTATIC PRESSURE: (A) 2079 PSI
 INITIAL FLOW PERIOD MIN: 25 (B) 76 PSI TO (C) 145 PSI
 INITIAL CLOSED IN PERIOD MIN: 60 (D) 977 PSI
 FINAL FLOW PERIOD MIN: 60 (E) 205 PSI TO (F) 296 PSI
 FINAL CLOSED IN PERIOD MIN: 93 (G) 865 PSI
 FINAL HYDROSTATIC PRESSURE (H) 2066 PSI

TKT # 5259

5259
13762

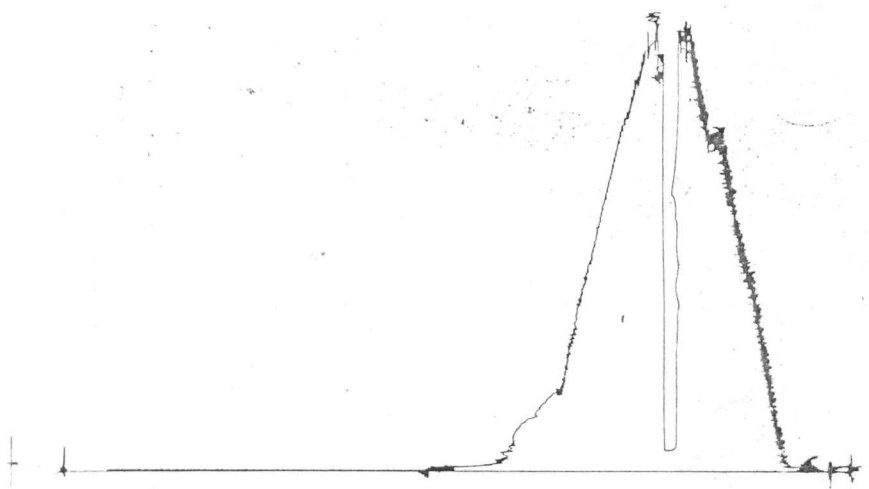
I



TKT # 5259

3259
13759

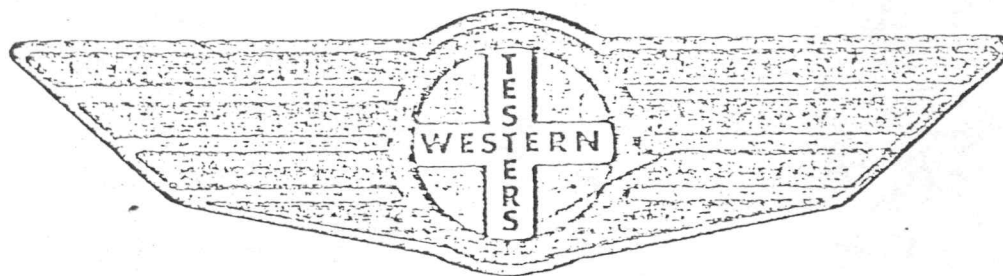
0



FORMATION

TEST

REPORT



Home Office:

Wichita, Kansas 67201

P.O. Box 1599

Phone (316) 262-5861

WESTERN TESTING COMPANY INC.
SUBSURFACE PRESSURE SURVEY

DATE: 8/3/84 TICKET #5260
 CUSTOMER: EUWER PETROLEUM CORPORATION LEASE: NEELAND
 WELL: #1 TEST: 5 GEOLOGIST: SLAGLE
 ELEVATION (KB): 2714 FORMATION: MISS
 SECTION: 14 TOWNSHIP: 20S
 RANGE: 20W COUNTY: PAWNEE STATE: KANSAS
 GAUGE SN #13762 RANGE: 3925 CLOCK: 12

INTERVAL TEST FROM: 4247 FT TO: 4260 FT TOTAL DEPTH: 4260 FT
 DEPTH OF SELECTIVE ZONE: FT
 PACKER DEPTH: 4242 FT SIZE: 6 3/4 IN PACKER DEPTH: 4247 FT SIZE: 6 3/4 IN
 PACKER DEPTH: FT SIZE: IN PACKER DEPTH: FT SIZE: IN

DRILLING CONTRACTOR: BERGMAN
 MUD TYPE: STARCH VISCOSITY: 47
 WEIGHT: 9.6 WATER LOSS (CC): 12.0
 CHLORIDES (P.P.M.): 50000

JARS - MAKE: SERIAL NUMBER:
 DID WELL FLOW? REVERSED OUT?
 DRILL COLLAR LENGTH: FT I.D.: IN
 WEIGHT PIPE LENGTH: 533 FT I.D.: 2.7 IN
 DRILL PIPE LENGTH: 3690 FT I.D.: 3.8 IN
 TEST TOOL LENGTH: 24 FT TOOL SIZE: 5 1/2 O.D. IN
 ANCHOR LENGTH: 13 FT SIZE: 5 1/2 O.D. IN
 SURFACE CHOKE SIZE: 3/4 IN BOTTOM CHOKE SIZE: 3/4 IN
 MAIN HOLE SIZE: 7 7/8 IN TOOL JOINT SIZE: 4 1/2 XH IN

BLOW: INITIAL FLOW PERIOD WEAK 1/2" BLOW BUILDING
 TO 1 1/2" IN 25 MINUTES. FINAL FLOW
 PERIOD FAIR 1 1/2" BLOW TO 3 1/2" BLOW
 IN 60 MINUTES.

RECOVERED: 5 FT OF: CLEAN OIL
 RECOVERED: 20 FT OF: 21% OIL; 5% WTR; 74% MUD.
 RECOVERED: 35 FT OF: 5% OIL; 5% WTR; 90% MUD.
 RECOVERED: FT OF:
 RECOVERED: FT OF:
 RECOVERED: FT OF:
 RECOVERED: FT OF:
 RECOVERED: FT OF:
 RECOVERED: FT OF:

REMARKS:

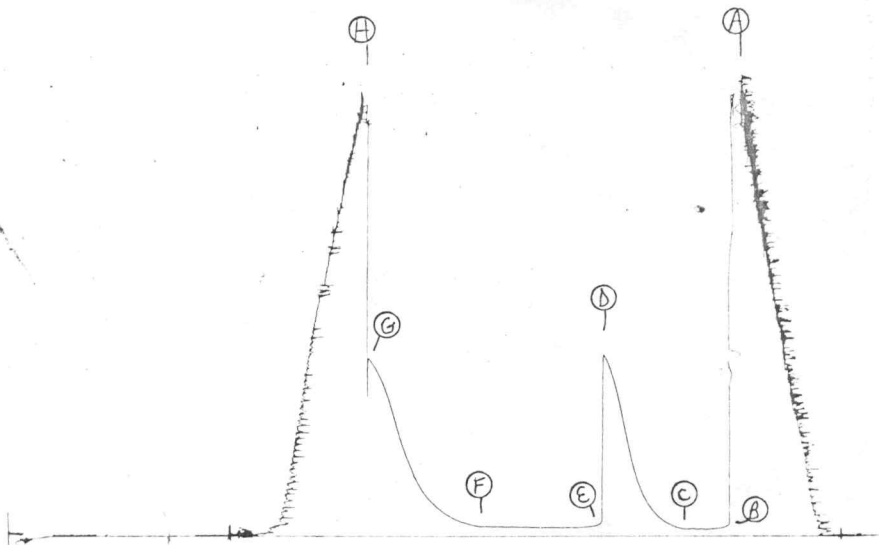
TIME SET PACKER(S): 9:10 A.M. TIME STARTED OFF BOTTOM: 1:40 P.M.
 WELL TEMPERATURE: 120 °F
 INITIAL HYDROSTATIC PRESSURE: (A) 2100 PSI
 INITIAL FLOW PERIOD MIN: 30 (B) 36 PSI TO (C) 36 PSI
 INITIAL CLOSED IN PERIOD MIN: 66 (D) 904 PSI
 FINAL FLOW PERIOD MIN: 90 (E) 45 PSI TO (F) 47 PSI
 FINAL CLOSED IN PERIOD MIN: 84 (G) 879 PSI
 FINAL HYDROSTATIC PRESSURE (H) 2071 PSI

TKT # 5260

5260

13762

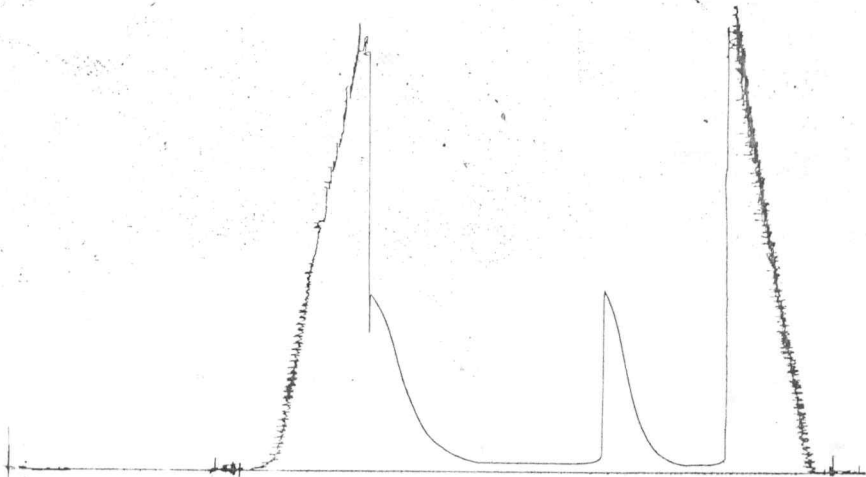
I



TKT # 5260

5260
13759

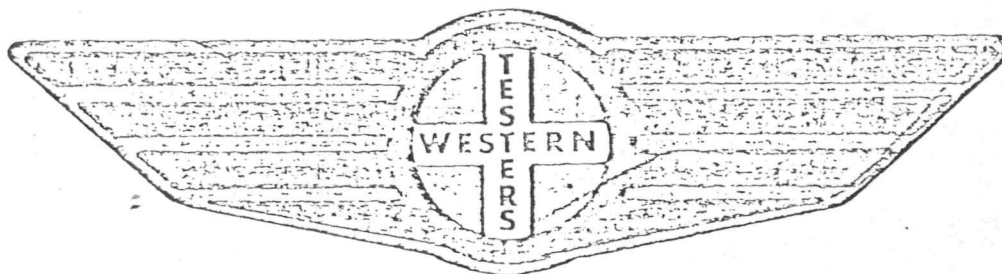
0



FORMATION

TEST

REPORT



Home Office:

Wichita, Kansas 67201

P.O. Box 1599

Phone (316) 262-5861

WESTERN TESTING COMPANY INC.
SUBSURFACE PRESSURE SURVEY

DATE: 8/4/84
CUSTOMER: EUWER PETROLEUM CORPORATION
WELL: #1 TEST: 6
ELEVATION (KB): 2714 FORMATION: MISS
SECTION: 14 TOWNSHIP: 20S
RANGE: 20W COUNTY: PAWNEE STATE: KANSAS
GAUGE SN #13762 RANGE: 3925 CLOCK: 12

INTERVAL TEST FROM: 4260 FT TO: 4280 FT TOTAL DEPTH: 4280 FT
DEPTH OF SELECTIVE ZONE: FT
PACKER DEPTH: 4255 FT SIZE: 6 3/4 IN PACKER DEPTH: 4260 FT SIZE: 6 3/4 IN
PACKER DEPTH: FT SIZE: IN PACKER DEPTH: FT SIZE: IN

DRILLING CONTRACTOR: BERGMAN
MUD TYPE: STARCH VISCOSITY: 46
WEIGHT: 9.4 WATER LOSS (CC): 11.8
CHLORIDES (P.P.M.): 39000

JARS - MAKE: SERIAL NUMBER:
DID WELL FLOW? REVERSED OUT?
DRILL COLLAR LENGTH: FT I.D.: IN
WEIGHT PIPE LENGTH: 533 FT I.D.: 2.7 IN
DRILL PIPE LENGTH: 3703 FT I.D.: 3.8 IN
TEST TOOL LENGTH: 24 FT TOOL SIZE: 5 1/2 O.D. IN
ANCHOR LENGTH: 20 FT SIZE: 5 1/2 O.D. IN
SURFACE CHOKE SIZE: 3/4 IN BOTTOM CHOKE SIZE: 3/4 IN
MAIN HOLE SIZE: 7 7/8 IN TOOL JOINT SIZE: 4 1/2 XH IN

BLOW: INITIAL FLOW PERIOD WEAK 2" BLOW THROUGHOUT.
FINAL FLOW PERIOD WEAK TO INTERMITTEN
2" BLOW THROUGHOUT.

RECOVERED: 65 FT OF: OIL SPOTTED MUD.
RECOVERED: FT OF:
RECOVERED: FT OF:
RECOVERED: FT OF:
RECOVERED: FT OF:
RECOVERED: FT OF:
RECOVERED: FT OF:
RECOVERED: FT OF:
RECOVERED: FT OF:

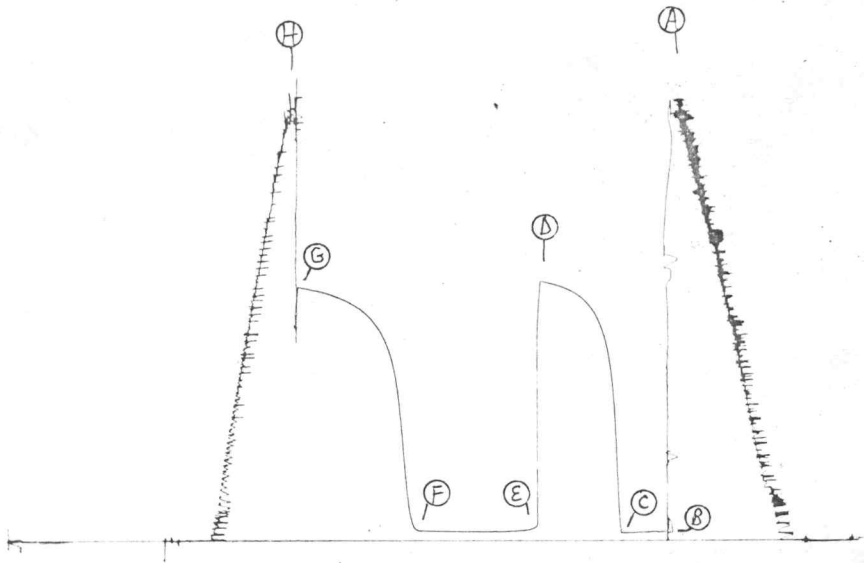
REMARKS: GOOD SHOW OF OIL TOP OF TOOL.

TIME SET PACKER(S): 2:50 A.M. TIME STARTED OFF BOTTOM: 7:20 A.M.
WELL TEMPERATURE: 120 °F
INITIAL HYDROSTATIC PRESSURE: (A) 2136 PSI
INITIAL FLOW PERIOD MIN: 30 (B) 39 PSI TO (C) 39 PSI
INITIAL CLOSED IN PERIOD MIN: 60 (D) 1291 PSI
FINAL FLOW PERIOD MIN: 90 (E) 48 PSI TO (F) 52 PSI
FINAL CLOSED IN PERIOD MIN: 90 (G) 1262 PSI
FINAL HYDROSTATIC PRESSURE (H) 2090 PSI

TKT # 5261

5261
13762

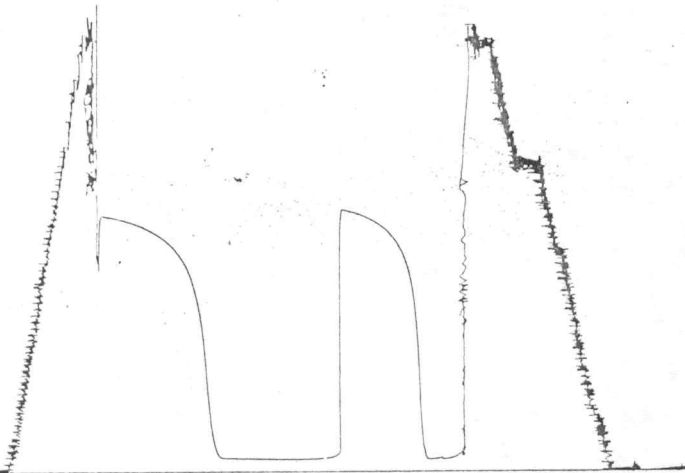
I



TKT # 5261

5261
13759

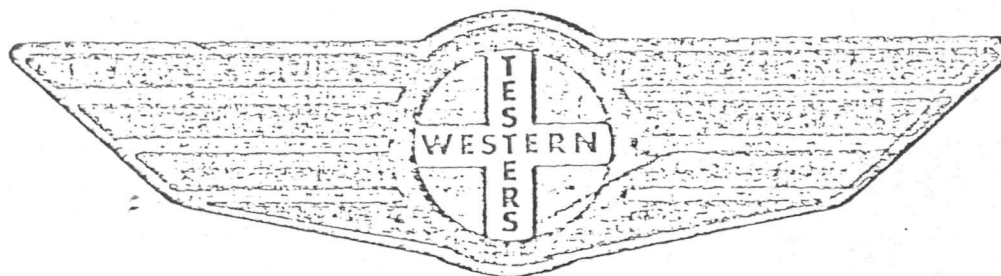
0



FORMATION

TEST

REPORT



Home Office:

Wichita, Kansas 67201

P.O. Box 1599

Phone (316) 262-5861

WESTERN TESTING COMPANY INC.
SUBSURFACE PRESSURE SURVEY

DATE: 8/4/84
CUSTOMER: EUWER PETROLEUM CORPORATION
WELL: #1 TEST: 7
ELEVATION (KB): 2714 FORMATION: MISS
SECTION: 14 TOWNSHIP: 20S
RANGE: 20W COUNTY: PAWNEE STATE: KANSAS
GAUGE SN #13762 RANGE: 3925 CLOCK: 12

INTERVAL TEST FROM: 4290 FT TO: 4300 FT TOTAL DEPTH: 4300 FT
DEPTH OF SELECTIVE ZONE: FT
PACKER DEPTH: 4275 FT SIZE: 6 3/4 IN PACKER DEPTH: 4290 FT SIZE: 6 3/4 IN
PACKER DEPTH: FT SIZE: IN PACKER DEPTH: FT SIZE: IN

DRILLING CONTRACTOR: BERGMAN
MUD TYPE: STARCH VISCOSITY: 48
WEIGHT: 9.6 WATER LOSS (CC): 11.2
CHLORIDES (P.P.M.): 37000
JARS - MAKE: SERIAL NUMBER:
DID WELL FLOW? REVERSED OUT?
DRILL COLLAR LENGTH: FT I.D.: IN
WEIGHT PIPE LENGTH: 533 FT I.D.: 2.7 IN
DRILL PIPE LENGTH: 3723 FT I.D.: 3.8 IN
TEST TOOL LENGTH: 24 FT TOOL SIZE: 5 1/2 O.D. IN
ANCHOR LENGTH: 20 FT SIZE: 5 1/2 O.D. IN
SURFACE CHOKE SIZE: 3/4 IN BOTTOM CHOKE SIZE: 3/4 IN
MAIN HOLE SIZE: 7 7/8 IN TOOL JOINT SIZE: 4 1/2 XH IN

BLOW: INITIAL FLOW PERIOD WEAK 1/2" BLOW THROUGHOUT.
FINAL FLOW PERIOD NO BLOW FLUSHED TOOL.

RECOVERED: 30 FT OF: OIL SPECKED MUD.
RECOVERED: FT OF:
RECOVERED: FT OF:
RECOVERED: FT OF:
RECOVERED: FT OF:
RECOVERED: FT OF:
RECOVERED: FT OF:
RECOVERED: FT OF:
RECOVERED: FT OF:
RECOVERED: FT OF:

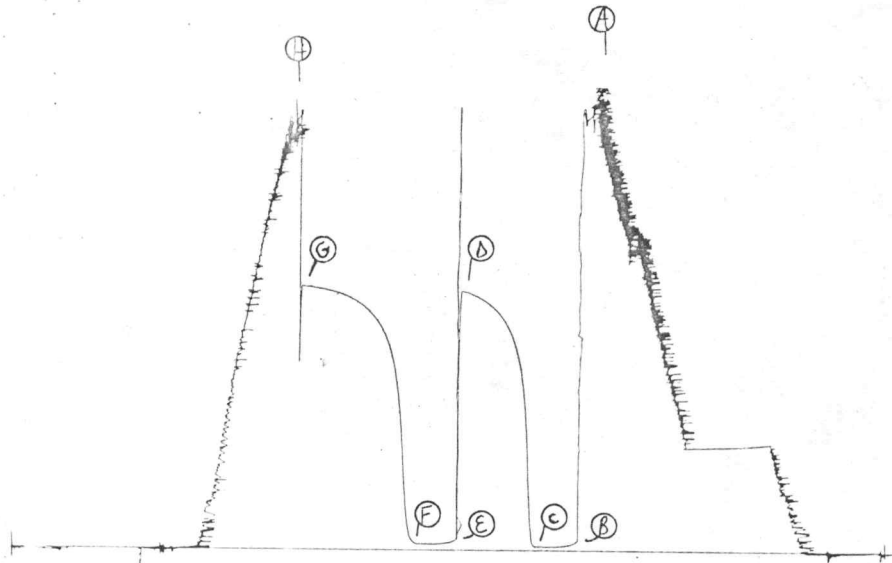
REMARKS: GOOD SHOW OF OIL IN TOP OF TOOL.

TIME SET PACKER(S): 7:30 P.M. TIME STARTED OFF BOTTOM: 11:00 P.M.
WELL TEMPERATURE: 118 °F
INITIAL HYDROSTATIC PRESSURE: (A) 2142 PSI
INITIAL FLOW PERIOD MIN: 30 (B) 16 PSI TO (C) 16 PSI
INITIAL CLOSED IN PERIOD MIN: 60 (D) 1285 PSI
FINAL FLOW PERIOD MIN: 30 (E) 56 PSI TO (F) 28 PSI
FINAL CLOSED IN PERIOD MIN: 87 (G) 1307 PSI
FINAL HYDROSTATIC PRESSURE (H) 2110 PSI

TKT # 5262

5263
13762

I



TRT # 5262

5263
13759

0

