

CROWN TESTING CO.
 224 E. DOUGLAS, SUITE 530
 WICHITA, KS 67202

DRILL-STEM TEST DATA

Well Name	1-A Dirks	Test No.	1
Well Number	1-A	Zone Tested	Arbuckle
Company	Jay Boy Oil	Date	4-21-90
Comp. Rep.	Ken Greenwood	Tester	Greg Saffa
Contractor	Allen Drilling Rig 3	Ticket No.	2641
Location	Sec. 14, Twp. 20S, Rg. 16W Pawnee County	Elevation	2074 KB

Recorder No. 13810 Clock Range 12 hr. Blow _____

Depth 3800 Initial Flow Very strong off bottom bucket

Initial Hydro Mud Press. 1884 soon as tool opened

Initial Flow Press. 849-849

Initial Shut-in Press. 1047 Final Flow Very strong

Final Flow Press. 983-1065

Final Shut-in Press. 1119

Final Hydro Mud Press. 1847

Temperature 102 Initial Flow 20 Mins.

Mud Weight 9.4 Viscosity 56 Initial Shut-in 30 Mins.

Fluid Loss 12 Final Flow 15 Mins.

Interval Tested 3761-3800 39 ft anchor Final Shut-in 60 Mins.

Top Packer Depth 3756 Surface Choke Size 1/2

Bottom Packer Depth 3761 Bottom Choke Size 1/2

Total Depth 3800 Main Hole Size 7 7/8

Drill Pipe Size 4 1/2 X H Wt. _____ Rubber Size 6 3/4

Drill Collar I.D. _____ Ft. Run _____

Recovery—Total Feet 3800

Recovered 3800 Feet Of Well flowed in 12 min oil & water

Recovered _____ Feet Of Gas to surface in 3 min

Recovered _____ Feet Of _____

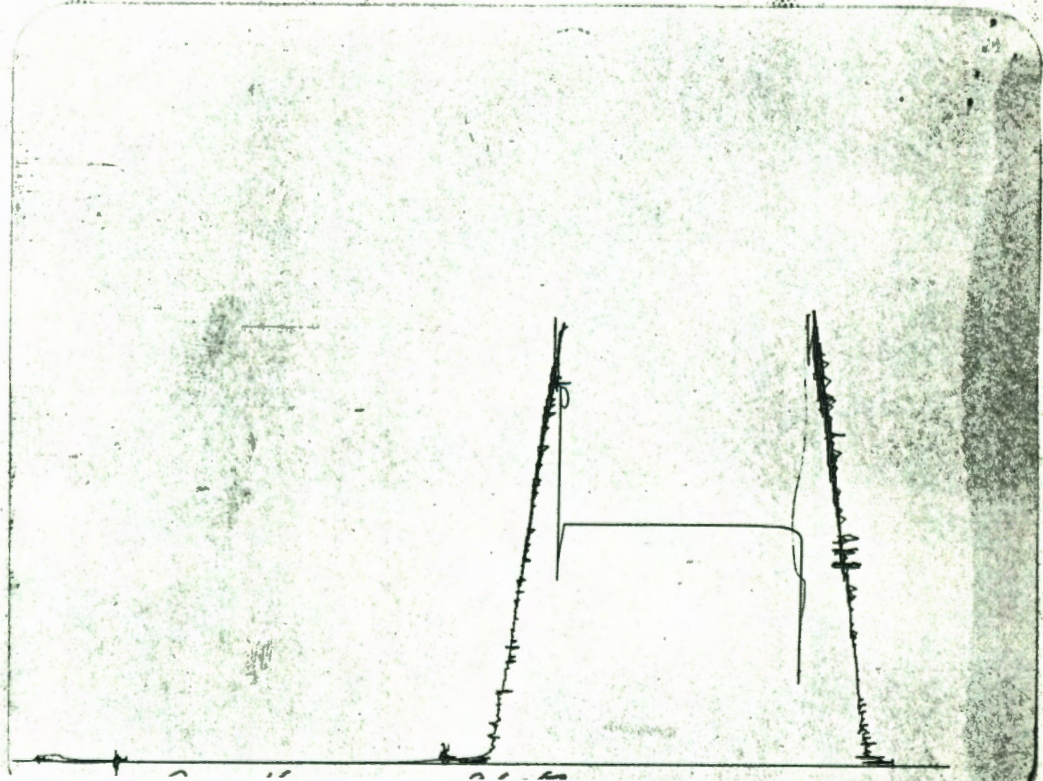
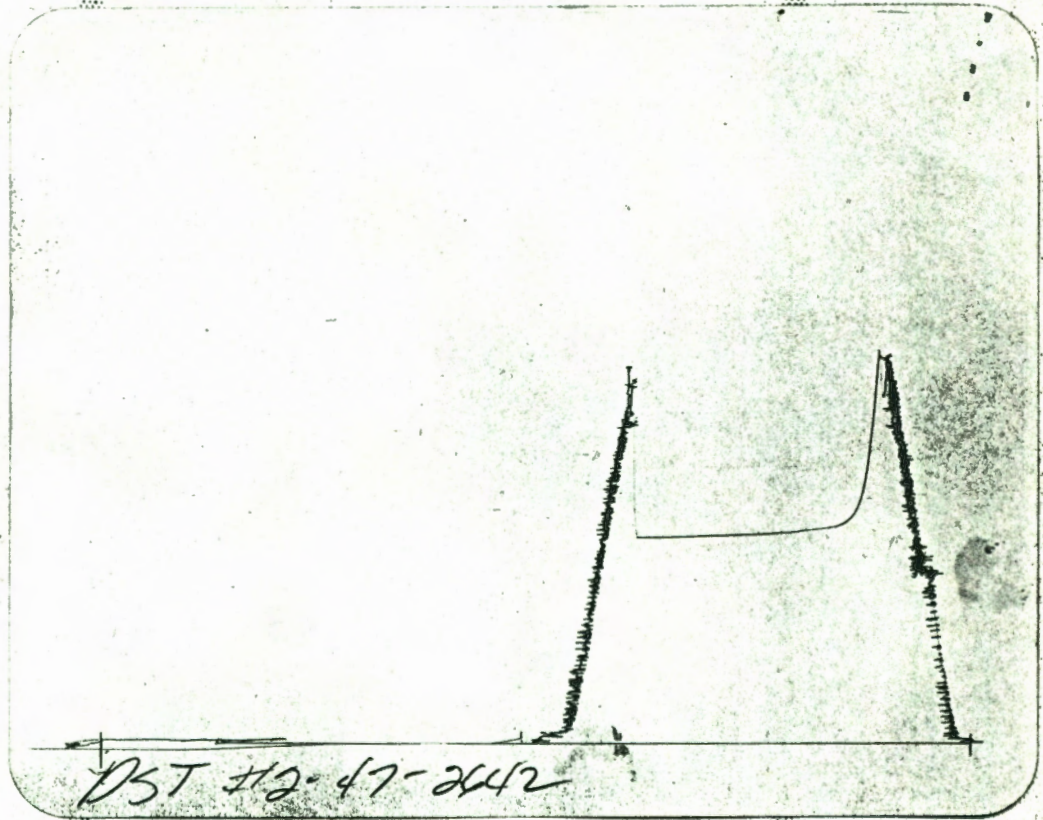
Recovered _____ Feet Of Water chlorides 33,000 ppm oil 36 gravity corrected to 60°

Remarks

Cir Sub

CROWN TESTING COMPANY shall not be liable for damage of any kind to the property or personnel of the one for whom a test is made or for any loss suffered or sustained directly or indirectly through the use of its equipment, or its statement or opinion concerning the results of any test. Tools lost or damaged in the hole shall be paid for by the party for whom the test is made.

By Kenneth Greenwood
 Owner, Operator or his Agent



CROWN TESTING CO.
 224 E. DOUGLAS, SUITE 530
 WICHITA, KS 67202

DRILL-STEM TEST DATA

Well Name	1-A Dirks	Test No.	2
Well Number	1-A	Zone Tested	Arbuckle
Company	Jay Boy Oil	Date	4-22-90
Comp. Rep.	Ken Greenwood	Tester	Greg Saffa
Contractor	Allen Drilling Rig 3	Ticket No.	2642
Location	Sec. 14, Twp. 20S, Rg. 16W Pawnee County	Elevation	2074 KB

Recorder No. 13810 Clock Range 12 hr. Blow _____

Depth 3900 Initial Flow Weak blow 1 1/2" in bucket

Initial Hydro Mud Press. _____

Initial Flow Press. _____

Initial Shut-in Press. _____ Final Flow No blow

Final Flow Press. _____

Final Shut-in Press. Misrun plugged tool

Final Hydro Mud Press. _____

Temperature _____ Initial Flow 30 Mins.

Mud Weight 9.5 Viscosity 70 Initial Shut-in 60 Mins.

Fluid Loss 14.4 Final Flow 30 Mins.

Interval Tested 3817-3834 17 ft. anchor Final Shut-in 60 Mins.

Top Packer Depth 3817 Surface Choke Size 1/2

Bottom Packer Depth 3834 Bottom Choke Size 1/2

Total Depth 3900 Main Hole Size 7 7/8

Drill Pipe Size 4 1/2 X H Wt. _____ Rubber Size 6 3/4

Drill Collar I.D. _____ Ft. Run _____

Recovery—Total Feet _____

Recovered _____ Feet Of _____

Recovered _____ Feet Of _____

Recovered _____ Feet Of _____

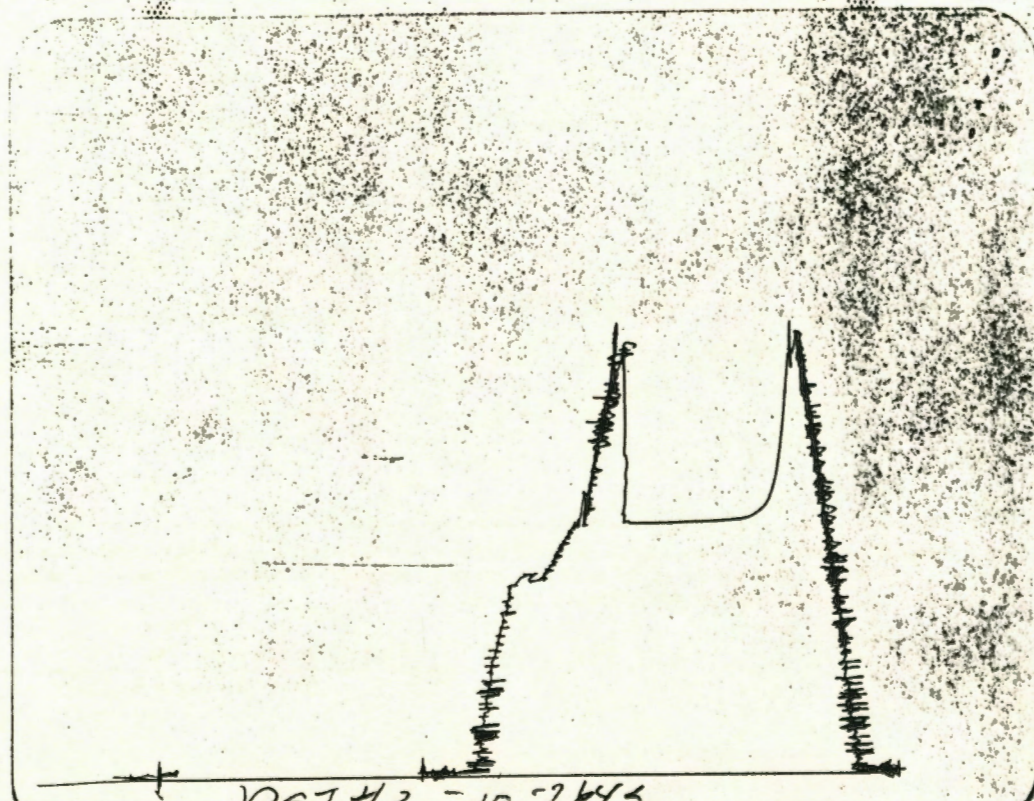
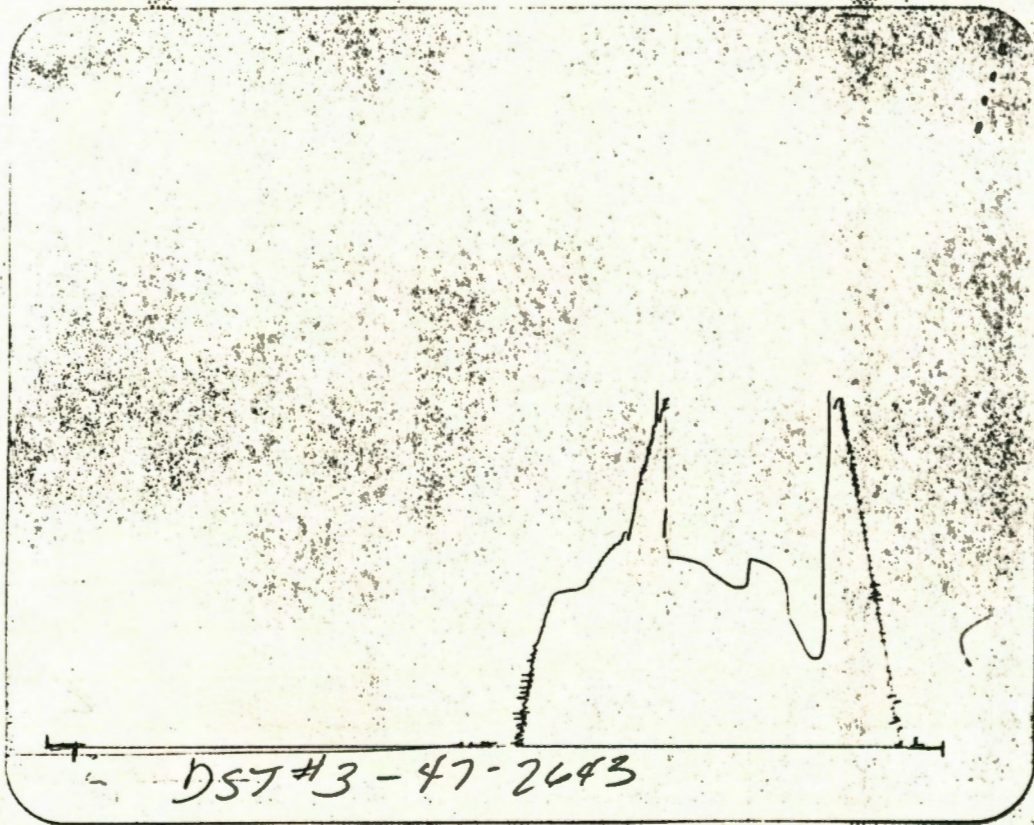
Recovered _____ Feet Of _____

Remarks

Straddle test Misrun

CROWN TESTING COMPANY shall not be liable for damage of any kind to the property or personnel of the one for whom a test is made or for any loss suffered or sustained directly or indirectly through the use of its equipment, or its statement or opinion concerning the results of any test. Tools lost or damaged in the hole shall be paid for by the party for whom the test is made.

By Ken Greenwood
 Owner, Operator or his Agent



CROWN TESTING CO.
 224 E. DOUGLAS, SUITE 530
 WICHITA, KS 67202

DRILL-STEM TEST DATA

Well Name	1-A Dirks	Test No.	3
Well Number	1-A	Zone Tested	Arbuckle
Company	Jay Boy Oil	Date	4-22-90
Comp. Rep.	Ken Greenwood	Tester	Greg Saffa
Contractor	Allen Drilling Rig 3	Ticket No.	2643
Location	Sec. 14, Twp. 20S, Rg. 16 W. Pawnee Co.	Elevation	2074 KB

Recorder No. 13810 Clock Range 12 hr Blow _____
 Depth 3900 Initial Flow Very strong off bottom bucket soon as tool opened
 Initial Hydro Mud Press. 1963
 Initial Flow Press. 541-716
 Initial Shut-in Press. 1098 Final Flow Very strong
 Final Flow Press. 934-989
 Final Shut-in Press. 1152
 Final Hydro Mud Press. 1909
 Temperature 104 Initial Flow 30 Mins.
 Mud Weight 9.5 Viscosity 51 Initial Shut-in 30 Mins.
 Fluid Loss 14.4 Final Flow 30 Mins.
 Interval Tested 3800-3817 17 ft. anchor Final Shut-in 30 Mins.
 Top Packer Depth 3800 Surface Choke Size 1/2
 Bottom Packer Depth 3817 Bottom Choke Size 1/2
 Total Depth 3900 Main Hole Size 7 7/8
 Drill Pipe Size 4 1/2 X H Wt. _____ Rubber Size 6 3/4
 Drill Collar I.D. _____ Ft. Run _____
 Recovery—Total Feet 2380
 Recovered _____ Feet Of Gas to surface in 5 min too small to gauge
 Recovered 380 Feet Of Clean gassy oil 32 gravity
 Recovered 2000 Feet Of Water 40,000 ppm
 Recovered _____ Feet Of _____

Remarks
Straddle test Cir Sub

CROWN TESTING COMPANY shall not be liable for damage of any kind to the property or personnel of the one for whom a test is made or for any loss suffered or sustained directly or indirectly through the use of its equipment, or its statement or opinion concerning the results of any test. Tools lost or damaged in the hole shall be paid for by the party for whom the test is made.

By Ken Greenwood
 Owner, Operator or his Agent

